



WCR 89 LOOKING NORTH AT ACCESS POINT



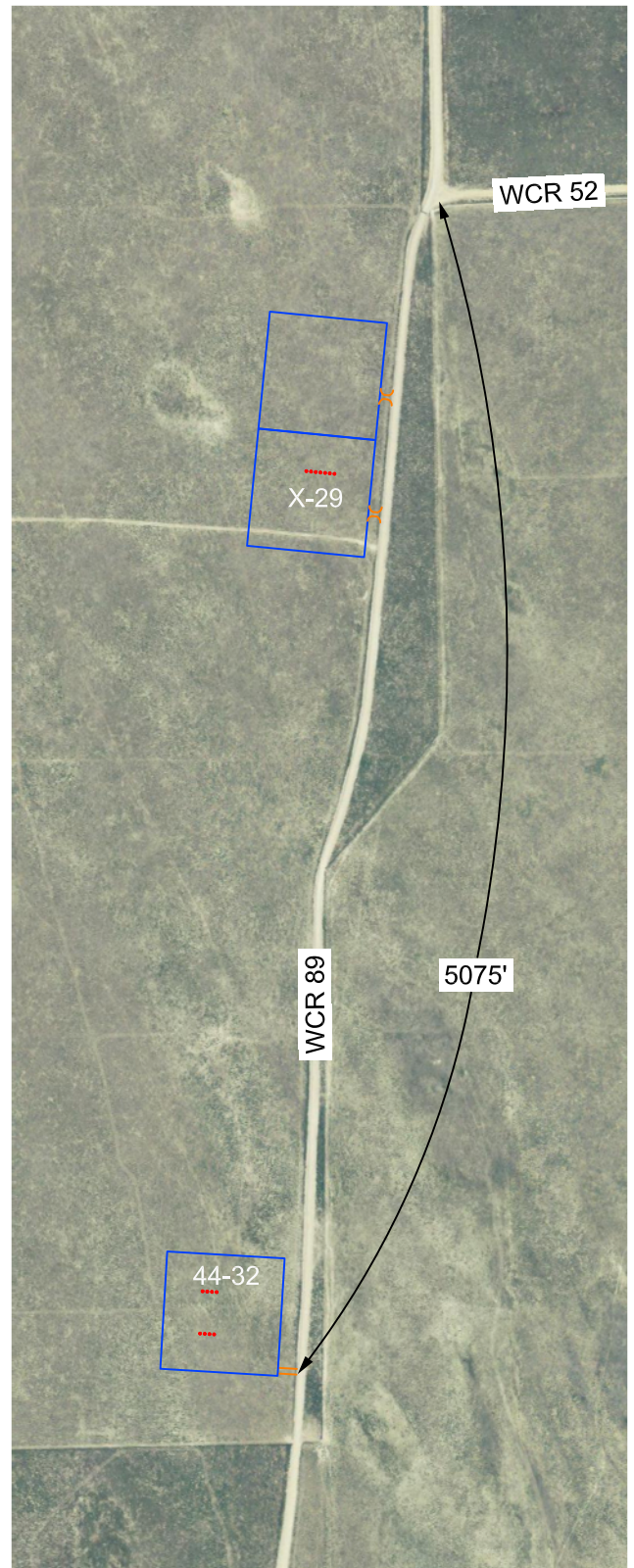
WCR 89 LOOKING EAST AT ACCESS POINT



WCR 89 LOOKING SOUTH AT ACCESS POINT



WCR 89 LOOKING WEST FROM ACCESS POINT

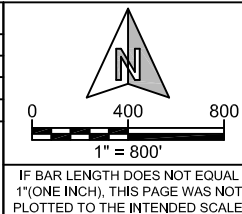


SHEET NO:

1 of 1

Fremont
ENGINEERING & SURVEYING
64 COAL MINE RD.
LANDER, WY 82520
307-349-0840
fes@wyoming.com

Drawn By: MAM
Checked By: DAF
Date: 11/12/14
Revision:
Date:
Explanation:



COUNTY ROAD ACCESS EXHIBIT

STATE PRONGHORN 44-32 PAD
SE $\frac{1}{4}$, SECTION 32,
T.5N., R.61W., 6th PM
WELD COUNTY, COLORADO

BONANZA CREEK
410 17th Street
Denver, CO 80202
(720) 440-6100