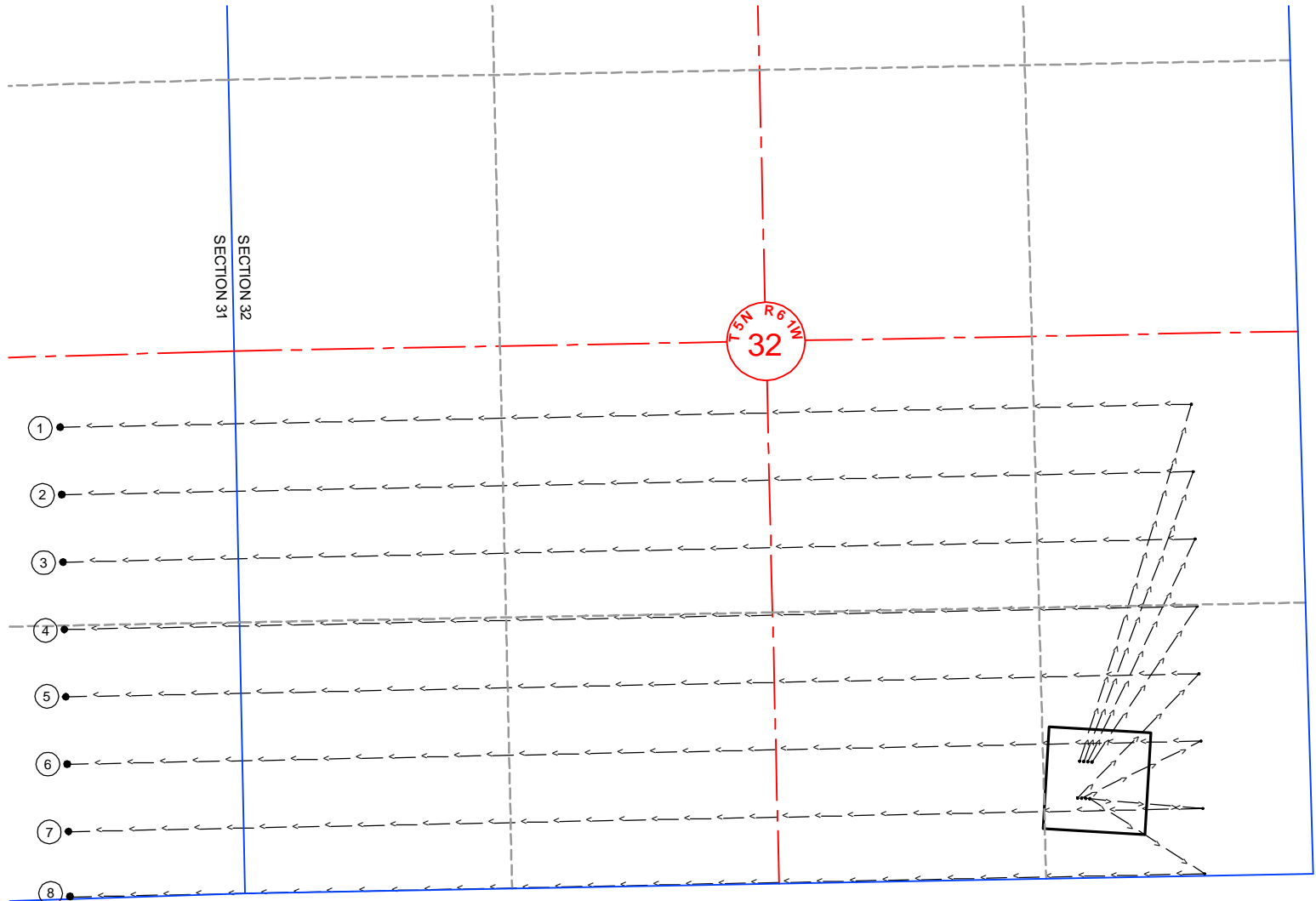


WELL TABULATION (NORTH)

- ① STATE PRONGHORN W43-32-31MRLNC
SURFACE (573' FSL; 1127' FEL)
LAT: N40.35154°, LONG: W104.22738°
TARGET 1: (2310' FSL; 531' FEL)
LAT: N40.35632°, LONG: W104.22533°
BOTTOM HOLE (2310' FSL; 860' FEL)
LAT: N40.35622°, LONG: W104.24521°
- ② STATE PRONGHORN 43-32-31MRLNB
SURFACE (571' FSL; 1107' FEL)
LAT: N40.35154°, LONG: W104.22731°
TARGET 1: (1980' FSL; 531' FEL)
LAT: N40.35541°, LONG: W104.22532°
BOTTOM HOLE (1980' FSL; 860' FEL)
LAT: N40.35532°, LONG: W104.24520°
- ③ STATE PRONGHORN X43-32-31MRLNC
SURFACE (570' FSL; 1087' FEL)
LAT: N40.35153°, LONG: W104.22724°
TARGET 1: (1650' FSL; 531' FEL)
LAT: N40.35451°, LONG: W104.22530°
BOTTOM HOLE (1650' FSL; 860' FEL)
LAT: N40.35441°, LONG: W104.24520°
- ④ STATE PRONGHORN X-32-31MRLNB
SURFACE (568' FSL; 1067' FEL)
LAT: N40.35153°, LONG: W104.22717°
TARGET 1: (1320' FSL; 531' FEL)
LAT: N40.35360°, LONG: W104.22528°
BOTTOM HOLE (1320' FSL; 860' FEL)
LAT: N40.35351°, LONG: W104.24519°

WELL TABULATION (SOUTH)

- ⑧ STATE PRONGHORN Y-32-31MRLNB
SURFACE (389' FSL; 1083' FEL)
LAT: N40.35104°, LONG: W104.22722°
TARGET 1: (10' FSL; 531' FEL)
LAT: N40.35000°, LONG: W104.22522°
BOTTOM HOLE (10' FSL; 860' FEL)
LAT: N40.34989°, LONG: W104.24516°
- ⑦ STATE PRONGHORN Y44-32-31MRLNC
SURFACE (390' FSL; 1103' FEL)
LAT: N40.35104°, LONG: W104.22729°
TARGET 1: (330' FSL; 531' FEL)
LAT: N40.35088°, LONG: W104.22523°
BOTTOM HOLE (330' FSL; 860' FEL)
LAT: N40.35079°, LONG: W104.24517°
- ⑥ STATE PRONGHORN 44-32-31MRLNB
SURFACE (392' FSL; 1123' FEL)
LAT: N40.35104°, LONG: W104.22736°
TARGET 1: (660' FSL; 531' FEL)
LAT: N40.35179°, LONG: W104.22525°
BOTTOM HOLE (660' FSL; 860' FEL)
LAT: N40.35169°, LONG: W104.24517°
- ⑤ STATE PRONGHORN X44-32-31MRLNC
SURFACE (393' FSL; 1143' FEL)
LAT: N40.35105°, LONG: W104.22743°
TARGET 1: (990' FSL; 531' FEL)
LAT: N40.35269°, LONG: W104.22527°
BOTTOM HOLE (990' FSL; 860' FEL)
LAT: N40.35260°, LONG: W104.24518°

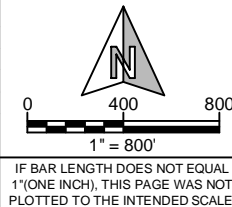


SHEET NO:

1 of 1

Fremont
ENGINEERING & SURVEYING
64 COAL MINE RD.
LANDER, WY 82520
307-349-0840
fes@wyoming.com

Drawn By: MAM
Checked By: DAF
Date: 11/17/14
Revision: 1
Date: 12/02/14
Explanation:
WELL LAYOUT

**MULTIWELL LAYOUT**

STATE PRONGHORN 44-32 PAD
SE $\frac{1}{4}$, SECTION 32,
T.5N., R.61W., 6th PM
WELD COUNTY, COLORADO



410 17th Street
Denver, CO 80202
(720) 440-6100