



# Kerr-McGee Oil & Gas Onshore LP

A subsidiary of Anadarko Petroleum Corporation

1099 18<sup>th</sup> Street  
Denver, CO 80202  
720-929-6000

January 23, 2015

Matt Lepore  
Director, Colorado Oil and Gas Conservation Commission  
Department of Natural Resources  
The Chancery Building  
1120 Lincoln Street, Suite 801  
Denver, CO 80203

Re: **30 Day Certification Letter - 318A.e**  
WILSON RANCH 12C-27HZ (Doc No. 400765725)  
Township 4 North, Range 68 West  
Section 26: NESE  
Unit Acreage: 640 acres  
Unit Spacing: 04N-68W-Sec 26 S2N2, N2S2  
04N-68W-Sec 27 S2N2, N2S2  
Weld County, Colorado

Dear Director Lepore:

Kerr-McGee Oil and Gas Onshore LP ("KMG") hereby certifies that a thirty (30) day notice has been given by certified mail to all mineral owners in the proposed wellbore spacing unit. We have not received any objections to such well location, proposed spacing unit, or additional producing formation. KMG hereby respectfully requests approval of this boundary well.

If you have any questions or issues regarding this permit, please contact Cheryl Light at (720) 929-6461.

Sincerely,

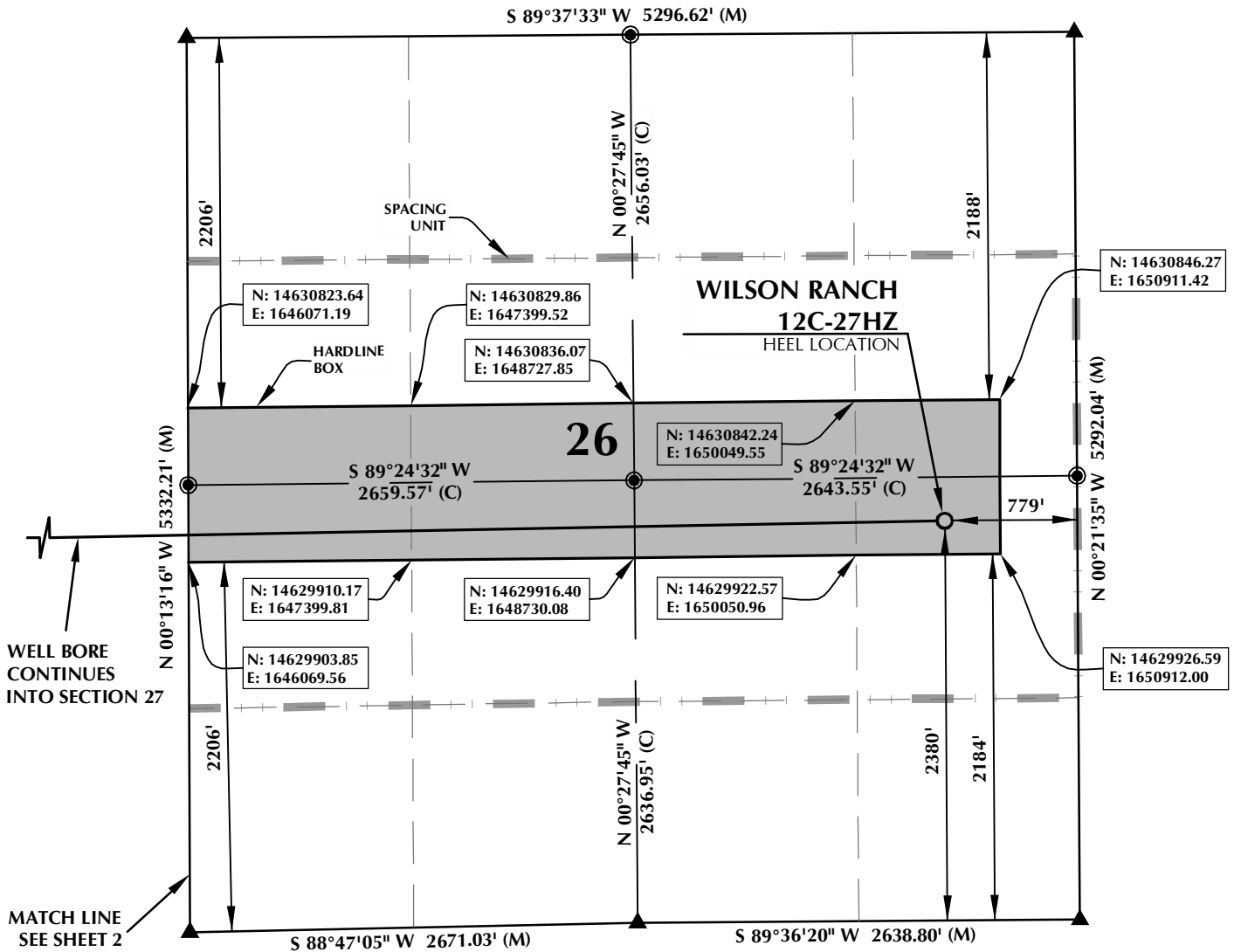
**Kerr-McGee Oil and Gas Onshore LP**

A handwritten signature in blue ink that reads 'RPowers'.

Ronett Powers  
Regulatory Analyst II

Enclosure

# SPACING UNIT: WILSON RANCH 12C-27HZ T4N, R68W



**HEEL LOCATION**  
N: 14,630,121.69'  
E: 1,650,592.99'

LATITUDE= 40.283911°  
LONGITUDE= -104.963511°

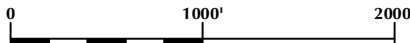
LATITUDE= 40°17'02.081\"/>  
LONGITUDE= -104°57'48.640"

**AVAILABLE FOOTAGE**  
9678'

**BOTTOM HOLE LOCATION**  
N: 14,630,002.55'  
E: 1,641,238.34'

LATITUDE= 40.283590°  
LONGITUDE= -104.997054°

LATITUDE= 40°17'00.924\"/>  
LONGITUDE= -104°59'49.394"



SCALE: 1" = 1000'

## NOTES:

- ▲ INDICATES FOUND SECTION CORNER
- INDICATES CALCULATED CORNER
- BEARINGS, DISTANCES, AND OFFSETS ARE BASED ON COLORADO COORDINATE SYSTEM 1983, NORTH ZONE
- COMBINED SCALE FACTOR: .99971841
- N / E COORDINATES ARE BASED ON UTM COORDINATE SYSTEM NAD83, ZONE 13
- LATITUDE AND LONGITUDE COORDINATES ARE NAD83 (CORS96)(EPOCH:2002)
- THIS EXHIBIT DOES NOT REPRESENT A LAND SURVEY PLAT OR IMPROVEMENT SURVEY PLAT AS DEFINED BY C.R.S. 38-51-102 AND CANNOT BE RELIED UPON TO DETERMINE OWNERSHIP.

## WELL PAD - WILSON RANCH 12N-27HZ

WILSON RANCH 12C-27HZ  
SPACING UNIT EXHIBIT  
2380' FSL & 779' FEL NESE (HEEL)  
LOCATED IN SECTION 26  
2384' FSL & 460' FWL NWSW (BOTTOM)  
LOCATED IN SECTION 27  
T4N, R68W, 6TH P.M.  
WELD COUNTY, COLORADO

**Kerr-McGee Oil &  
Gas Onshore L.P.**  
1099 18th Street  
Denver, Colorado 80202



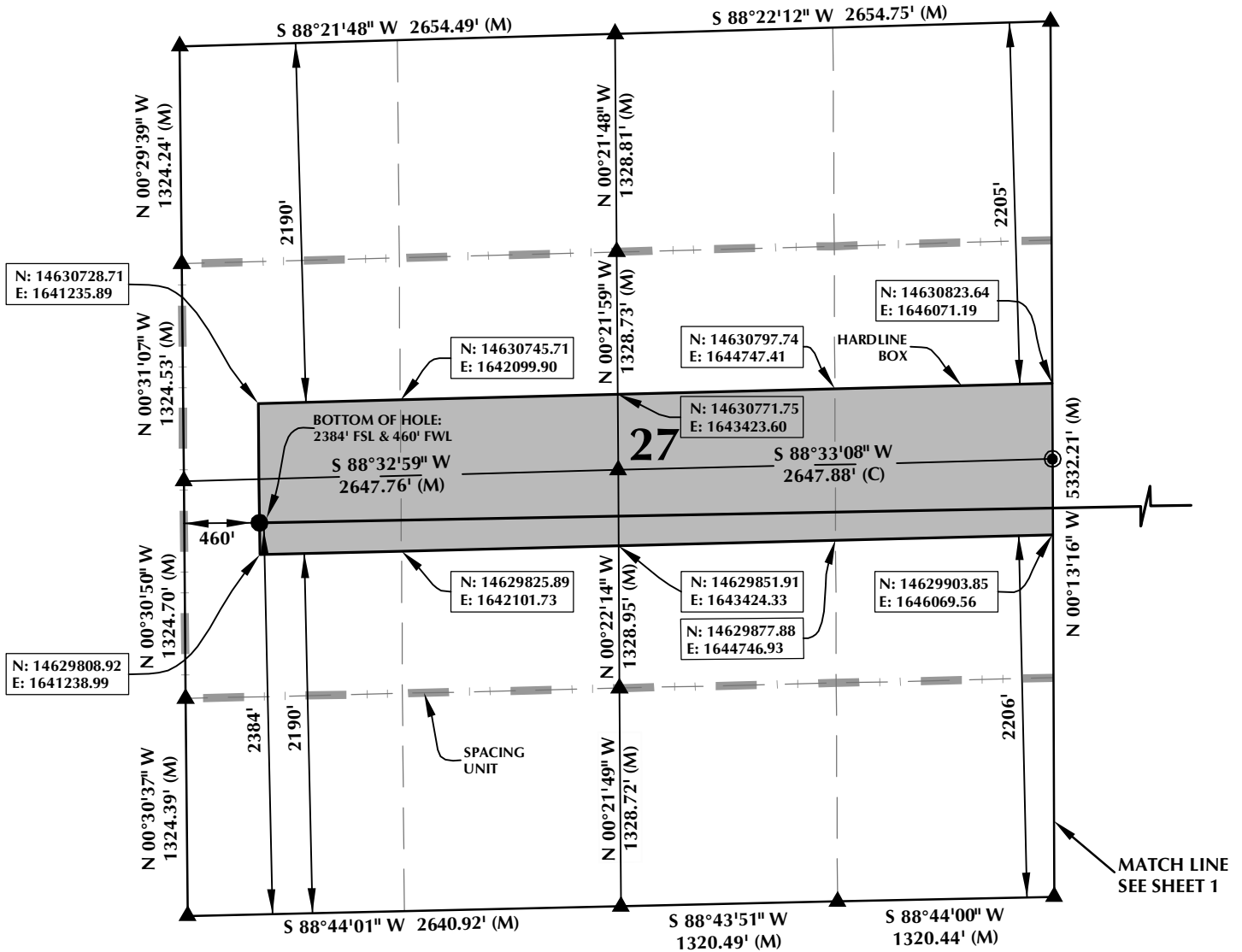
## CONSULTING, LLC

**SHERIDAN OFFICE**  
2155 North Main Street  
Sheridan, Wyoming 82801  
Phone 307-674-0609

**LOVELAND OFFICE**  
1635 Foxtrail Drive, Suite 204  
Loveland, Colorado 80538  
Phone 970-776-4331

DRAFTED BY:	LMO	CHECKED BY:	BJR	SHEET NO:
DATE DRAFTED:	5/1/14	DATE SURVEYED:	4/23/14	1
REVISED:	12/22/14	FILE NAME:	14-19	1 OF 2

# SPACING UNIT: WILSON RANCH 12C-27HZ T4N, R68W



**HEEL LOCATION**  
N: 14,630,121.69'  
E: 1,650,592.99'

LATITUDE= 40.283911°  
LONGITUDE= -104.963511°

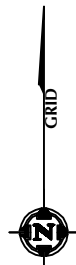
LATITUDE= 40°17'02.081"  
LONGITUDE= -104°57'48.640"

**AVAILABLE FOOTAGE**  
9678'

**BOTTOM HOLE LOCATION**  
N: 14,630,002.55'  
E: 1,641,238.34'

LATITUDE= 40.283590°  
LONGITUDE= -104.997054°

LATITUDE= 40°17'00.924"  
LONGITUDE= -104°59'49.394"



SCALE: 1" = 1000'

## NOTES:

- ▲ INDICATES FOUND SECTION CORNER
- INDICATES CALCULATED CORNER
- BEARINGS, DISTANCES, AND OFFSETS ARE BASED ON COLORADO COORDINATE SYSTEM 1983, NORTH ZONE
- COMBINED SCALE FACTOR: .99971841
- N / E COORDINATES ARE BASED ON UTM COORDINATE SYSTEM NAD83, ZONE 13
- LATITUDE AND LONGITUDE COORDINATES ARE NAD83 (CORS96)(EPOCH:2002)
- THIS EXHIBIT DOES NOT REPRESENT A LAND SURVEY PLAT OR IMPROVEMENT SURVEY PLAT AS DEFINED BY C.R.S. 38-51-102 AND CANNOT BE RELIED UPON TO DETERMINE OWNERSHIP.

## WELL PAD - WILSON RANCH 12N-27HZ

WILSON RANCH 12C-27HZ  
SPACING UNIT EXHIBIT  
2380' FSL & 779' FEL NESE (HEEL)  
LOCATED IN SECTION 26  
2384' FSL & 460' FWL NWSW (BOTTOM)  
LOCATED IN SECTION 27  
T4N, R68W, 6TH P.M.  
WELD COUNTY, COLORADO

**Kerr-McGee Oil &  
Gas Onshore L.P.**  
1099 18th Street  
Denver, Colorado 80202



## CONSULTING, LLC

**SHERIDAN OFFICE**  
2155 North Main Street  
Sheridan, Wyoming 82801  
Phone 307-674-0609

**LOVELAND OFFICE**  
1635 Foxtrail Drive, Suite 204  
Loveland, Colorado 80538  
Phone 970-776-4331

DRAFTED BY:	LMO	CHECKED BY:	BJR	SHEET NO:
DATE DRAFTED:	5/1/14	DATE SURVEYED:	4/23/14	2
REVISED:	12/22/14	FILE NAME:	14-19	2 OF 2