



# Kerr-McGee Oil & Gas Onshore LP

A subsidiary of Anadarko Petroleum Corporation

1099 18<sup>th</sup> Street  
Denver, CO 80202  
720-929-6000

January 23, 2015

Matt Lepore  
Director, Colorado Oil and Gas Conservation Commission  
Department of Natural Resources  
The Chancery Building  
1120 Lincoln Street, Suite 801  
Denver, CO 80203

Re: **30 Day Certification Letter - 318A.e**  
WHISPER ROCK 7N-25HZ (Doc No. 400765724)  
Township 4 North, Range 68 West  
Section 26: NESE  
Unit Acreage: 240 acres  
Unit Spacing: 04N-68W-Sec 25 N2S2  
04N-68W-Sec 26 N2SE  
Weld County, Colorado

Dear Director Lepore:

Kerr McGee Oil and Gas Onshore LP ("KMG") hereby certifies that KMG owns one hundred percent (100%) of the leasehold interest in the mineral rights in the proposed spacing unit. KMG hereby respectfully requests approval of this boundary well.

If you have any questions or issues regarding this permit, please contact Cheryl Light at (720) 929-6461.

Sincerely,

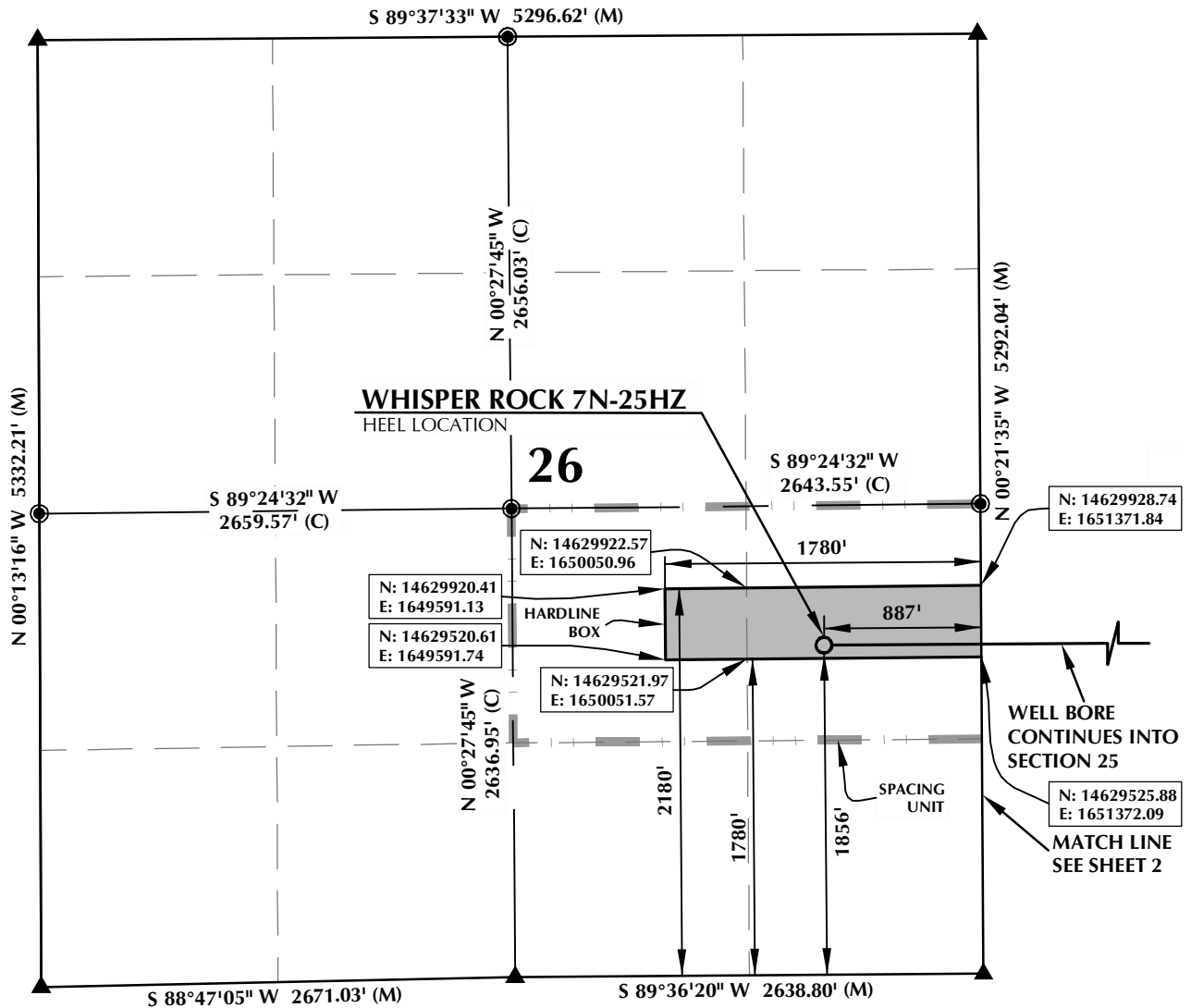
**Kerr-McGee Oil and Gas Onshore LP**

A handwritten signature in blue ink that reads 'RPowers'.

Ronett Powers  
Regulatory Analyst II

Enclosure

# SPACING UNIT: WHISPER ROCK 7N-25HZ T4N, R68W



## HEEL LOCATION

N: 14,629,597.74'  
E: 1,650,485.37'

LATITUDE= 40.282473°  
LONGITUDE= -104.963898°

LATITUDE= 40°16'56.901"  
LONGITUDE= -104°57'50.032"

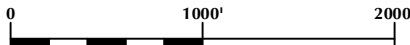
AVAILABLE FOOTAGE  
6617'

## BOTTOM HOLE LOCATION

N: 14,629,601.53'  
E: 1,65,206.65'

LATITUDE= 40.282475°  
LONGITUDE= -104.943383°

LATITUDE= 40°16'56.909"  
LONGITUDE= -104°56'36.181"



SCALE: 1" = 1000'

## NOTES:

- ▲ INDICATES FOUND SECTION CORNER
- INDICATES CALCULATED CORNER
- BEARINGS, DISTANCES, AND OFFSETS ARE BASED ON COLORADO COORDINATE SYSTEM 1983, NORTH ZONE
- COMBINED SCALE FACTOR: .99971841
- N / E COORDINATES ARE BASED ON UTM COORDINATE SYSTEM NAD83, ZONE 13
- LATITUDE AND LONGITUDE COORDINATES ARE NAD83 (CORS96)(EPOCH:2002)
- THIS EXHIBIT DOES NOT REPRESENT A LAND SURVEY PLAT OR IMPROVEMENT SURVEY PLAT AS DEFINED BY C.R.S. 38-51-102 AND CANNOT BE RELIED UPON TO DETERMINE OWNERSHIP.

## WELL PAD - WILSON RANCH 12N-27HZ

WHISPER ROCK 7N-25HZ  
SPACING UNIT EXHIBIT  
1856' FSL & 887' FEL NESE (HEEL)  
LOCATED IN SECTION 26  
1850' FSL & 460' FEL NESE (BOTTOM)  
LOCATED IN SECTION 25  
T4N, R68W, 6TH P.M.  
WELD COUNTY, COLORADO

**Kerr-McGee Oil &  
Gas Onshore L.P.**  
1099 18th Street  
Denver, Colorado 80202



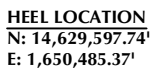
## CONSULTING, LLC

SHERIDAN OFFICE  
2155 North Main Street  
Sheridan, Wyoming 82801  
Phone 307-674-0609

LOVELAND OFFICE  
1635 Foxtrail Drive, Suite 204  
Loveland, Colorado 80538  
Phone 970-776-4331

DRAFTED BY:	LMO	CHECKED BY:	BJR	SHEET NO:
DATE DRAFTED:	9/11/14	DATE SURVEYED:	4/23/14	1
REVISED:	12/22/14	FILE NAME:	14-19	1 OF 2

**MATCH LINE  
SEE SHEET 1**



**LATITUDE= 40.282473°**  
**LONGITUDE= -104.963898°**

**LATITUDE= 40°16'56.901"**  
**LONGITUDE= -104°57'50.032"**

AVAILABLE FOOTAGE  
6617'

### BOTTOM HOLE LOCATION

N: 14,629,601.53<sup>1</sup>  
E: 1,65,206.65<sup>1</sup>

LATITUDE= 40.282475°  
LONGITUDE= -104.943383°

LATITUDE= 40°16'56.909"  
LONGITUDE= -104°56'36.181"



0 1000' 2000'

SCALE: 1" = 1000'

**NOTES:**

1.   ▲   INDICATES FOUND SECTION CORNER
2.   ◎   INDICATES CALCULATED CORNER
3.   BEARINGS, DISTANCES, AND OFFSETS ARE BASED ON  
COLORADO COORDINATE SYSTEM 1983, NORTH ZONE
4.   COMBINED SCALE FACTOR: .99971841
5.   N / E COORDINATES ARE BASED ON UTM COORDINATE SYSTEM  
NAD83, ZONE 13
6.   LATITUDE AND LONGITUDE COORDINATES ARE NAD83  
(CORS96)(EPOCH:2002)
7.   THIS EXHIBIT DOES NOT REPRESENT A LAND SURVEY PLAT OR  
IMPROVEMENT SURVEY PLAT AS DEFINED BY C.R.S. 38-51-102  
AND CANNOT BE RELIED UPON TO DETERMINE OWNERSHIP.

WHISPER ROCK 7N-25HZ  
SPACING UNIT EXHIBIT  
1856' FSL & 887' FEL NESE (HEEL)  
LOCATED IN SECTION 26  
1850' FSL & 460' FEL NESE (BOTTOM)  
LOCATED IN SECTION 25  
T4N, R68W, 6TH P.M.  
WELD COUNTY, COLORADO

**Kerr-McGee Oil &  
Gas Onshore L.P.**  
1099 18th Street  
Denver, Colorado 80202



CONSULTING, LLC

**SHERIDAN OFFICE**  
2155 North Main Street  
Sheridan, Wyoming 82801  
Phone 307-674-0609

**LOVELAND OFFICE**  
1635 Foxtrail Drive, Suite 204  
Loveland, Colorado 80538  
Phone 970-776-4331

**DRAFTED BY:** LM

CHECKED BY:	BIR
-------------	-----

SHEET NO:

**DATE DRAFTED:** 9/11/1

DATE SURVEYED: 4/23/14

REVISÉ: 12/22/1

FILE NAME:	14-19
------------	-------

SHEET NO:

2

2 OF 2