

US ROCKIES WATTENBERG PLANNING

WELD-NAD83-UTMFT13N

Wilson Ranch 9-26HZ Pad

Whisper Rock 5N-25HZ

Plan C

Plan: Permit Rev-3

Sperry Drilling Services Proposal Report

08 December, 2014

Well Coordinates: 14,629,668.45 N, 1,651,167.15 E (40° 16' 57.60" N, 104° 57' 41.23" W)

Ground Level: 5,040.00 usft

Local Coordinate Origin:

Centered on Well Whisper Rock 5N-25HZ

Viewing Datum:

RKB = 17' @ 5057.00usft

TVDs to System:

N

North Reference:

True

Unit System:

Dec-Deg - API - US Survey Feet - Custom

Version: 5000.1 Build: 70

HALLIBURTON

Project: WELD-NAD83-UTMFT13N
Site: Wilson Ranch 9-26HZ Pad
Well: Whisper Rock 5N-25HZ
Wellbore: Plan C
Design: Permit Rev-3

US ROCKIES WATTENBERG PLANNING

HALLIBURTON
Sperry Drilling

SECTION DETAILS

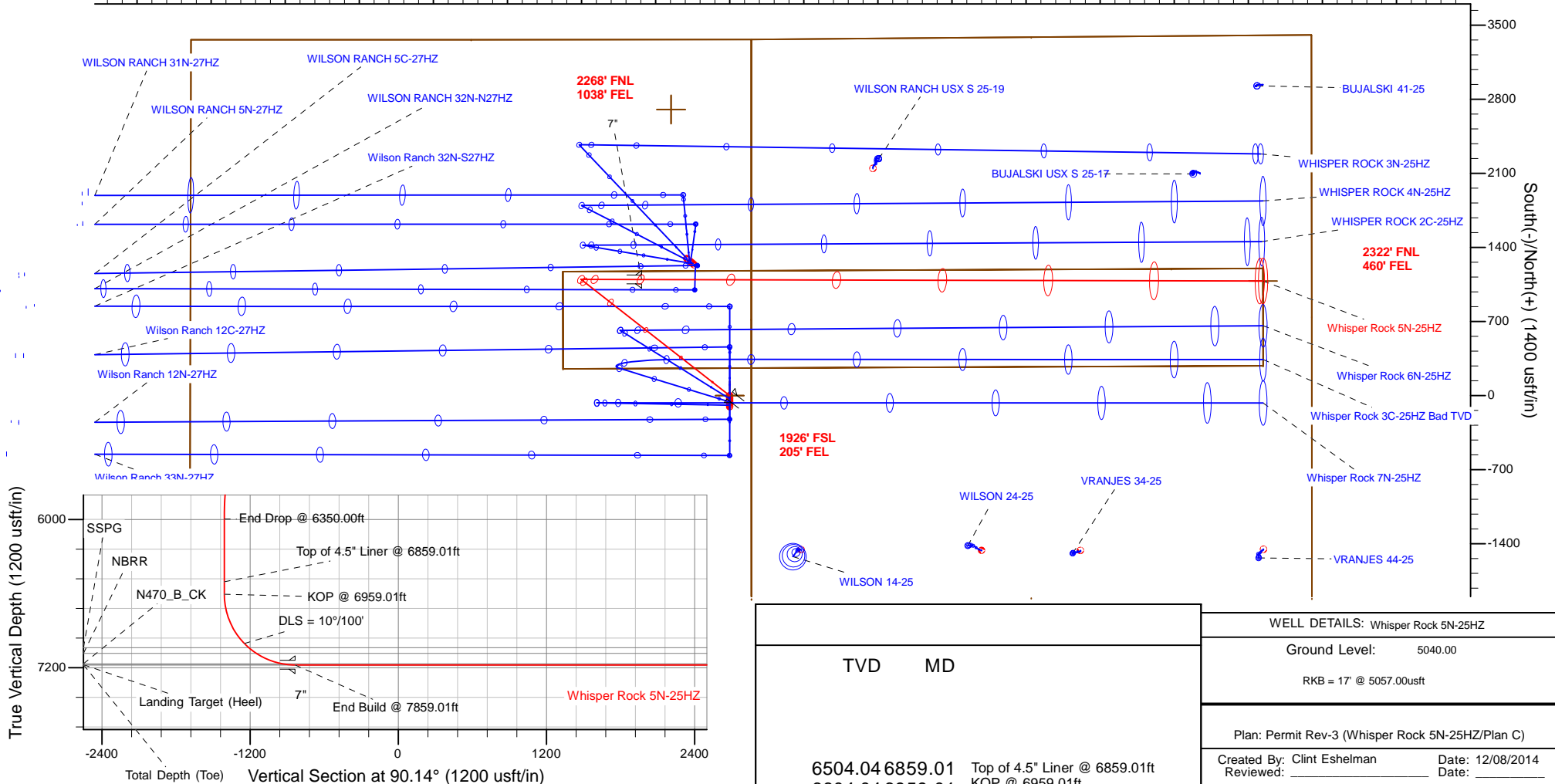
Sec	MD	Inc	Azi	TVD	+N/-S	+E/-W	Dleg	TFace	VSec	Target
1	0.00	0.00	0.00	0.00	+0.00	+0.00	0.00	0.00	0.00	
2	900.00	0.00	0.00	900.00	0.00	0.00	0.00	0.00	0.00	
3	2150.00	25.00	308.00	2110.71	165.25	-211.51	2.00	308.00	-211.91	
4	5100.00	25.00	308.00	4784.32	932.81	-1193.94	-0.00	0.00	-1196.22	
5	6350.00	0.00	0.00	5995.03	1098.06	-1405.45	2.00	180.00	-1408.13	
6	6859.01	0.00	0.00	6604.04	1098.06	-1405.45	0.00	0.00	-1408.13	
7	7859.01	90.00	90.14	7177.00	1096.70	-832.49	10.00	90.14	-835.17	
8	13730.06	90.00	90.14	7177.00	1082.79	5038.54	0.00	0.00	5035.88	Whisper Rock 5N-25HZ_BHL

WELLBORE TARGET DETAILS (LAT/LONG)

Name	TVD	+N/-S	+E/-W	Latitude	Longitude	
Whisper Rock 5N-25HZ_LD	0.00	0.00	0.00	40.282666	-104.961453	Polygon
Whisper Rock 5N-25HZ_SHL	0.00	0.00	0.00	40.282666	-104.961453	
4N-R68W-Sec. 25_Section Lines	88.00	2703.88	-554.38	40.290091	-104.963441	Polygon
4N-R68W-Sec. 26_Section Lines	88.00	2703.88	-554.38	40.290091	-104.963441	Polygon
Whisper Rock 5N-25HZ_BHL	7177.00	1082.79	5038.54	40.285638	-104.943386	

West(-)/East(+) (1400 usft/in)

1400 2100 2800 3500 4200 4900 5600 6300



Plan Report for Whisper Rock 5N-25HZ - Permit Rev-3

Measured Depth (usft)	Inclination (°)	Azimuth (°)	Vertical Depth (usft)	+N/-S (usft)	+E/-W (usft)	Vertical Section (usft)	Dogleg Rate (°/100usft)	Build Rate (°/100usft)	Turn Rate (°/100usft)	Toolface Azimuth (°)
0.00	0.00	0.00	0.00	0.00	0.00	0.00	0.00	0.00	0.00	0.00
Whisper Rock 5N-25HZ_LD - Whisper Rock 5N-25HZ_SHL										
88.00	0.00	0.00	88.00	0.00	0.00	0.00	0.00	0.00	0.00	0.00
4N-R68W-Sec. 26_Section Lines - 4N-R68W-Sec. 25_Section Lines										
100.00	0.00	0.00	100.00	0.00	0.00	0.00	0.00	0.00	0.00	0.00
200.00	0.00	0.00	200.00	0.00	0.00	0.00	0.00	0.00	0.00	0.00
300.00	0.00	0.00	300.00	0.00	0.00	0.00	0.00	0.00	0.00	0.00
400.00	0.00	0.00	400.00	0.00	0.00	0.00	0.00	0.00	0.00	0.00
469.00	0.00	0.00	469.00	0.00	0.00	0.00	0.00	0.00	0.00	0.00
Base Fox Hills										
500.00	0.00	0.00	500.00	0.00	0.00	0.00	0.00	0.00	0.00	0.00
600.00	0.00	0.00	600.00	0.00	0.00	0.00	0.00	0.00	0.00	0.00
700.00	0.00	0.00	700.00	0.00	0.00	0.00	0.00	0.00	0.00	0.00
754.00	0.00	0.00	754.00	0.00	0.00	0.00	0.00	0.00	0.00	0.00
Surface Csg Setting Depth - 9 5/8"										
800.00	0.00	0.00	800.00	0.00	0.00	0.00	0.00	0.00	0.00	0.00
900.00	0.00	0.00	900.00	0.00	0.00	0.00	0.00	0.00	0.00	0.00
Begin Nudge @ 900.00ft										
1,000.00	2.00	308.00	999.98	1.07	-1.38	-1.38	2.00	2.00	0.00	308.00
1,100.00	4.00	308.00	1,099.84	4.30	-5.50	-5.51	2.00	2.00	0.00	0.00
1,200.00	6.00	308.00	1,199.45	9.66	-12.37	-12.39	2.00	2.00	0.00	0.00
1,300.00	8.00	308.00	1,298.70	17.16	-21.97	-22.01	2.00	2.00	0.00	0.00
1,400.00	10.00	308.00	1,397.47	26.80	-34.30	-34.36	2.00	2.00	0.00	0.00
1,500.00	12.00	308.00	1,495.62	38.54	-49.33	-49.43	2.00	2.00	0.00	0.00
1,600.00	14.00	308.00	1,593.06	52.39	-67.06	-67.18	2.00	2.00	0.00	0.00
1,700.00	16.00	308.00	1,689.64	68.32	-87.45	-87.62	2.00	2.00	0.00	0.00
1,800.00	18.00	308.00	1,785.27	86.32	-110.49	-110.70	2.00	2.00	0.00	0.00
1,900.00	20.00	308.00	1,879.82	106.37	-136.14	-136.40	2.00	2.00	0.00	0.00
2,000.00	22.00	308.00	1,973.17	128.43	-164.38	-164.69	2.00	2.00	0.00	0.00
2,100.00	24.00	308.00	2,065.21	152.48	-195.17	-195.54	2.00	2.00	0.00	0.00
2,150.00	25.00	308.00	2,110.71	165.25	-211.51	-211.91	2.00	2.00	0.00	0.00
End Nudge @ 2150.00ft										
2,200.00	25.00	308.00	2,156.03	178.26	-228.16	-228.59	0.00	0.00	0.00	0.00
2,300.00	25.00	308.00	2,246.66	204.28	-261.46	-261.96	0.00	0.00	0.00	0.00
2,400.00	25.00	308.00	2,337.29	230.30	-294.77	-295.33	0.00	0.00	0.00	0.00
2,500.00	25.00	308.00	2,427.92	256.32	-328.07	-328.69	0.00	0.00	0.00	0.00
2,600.00	25.00	308.00	2,518.55	282.33	-361.37	-362.06	0.00	0.00	0.00	0.00
2,700.00	25.00	308.00	2,609.18	308.35	-394.67	-395.43	0.00	0.00	0.00	0.00
2,800.00	25.00	308.00	2,699.81	334.37	-427.98	-428.79	0.00	0.00	0.00	0.00
2,900.00	25.00	308.00	2,790.44	360.39	-461.28	-462.16	0.00	0.00	0.00	0.00
3,000.00	25.00	308.00	2,881.07	386.41	-494.58	-495.52	0.00	0.00	0.00	0.00
3,100.00	25.00	308.00	2,971.70	412.43	-527.89	-528.89	0.00	0.00	0.00	0.00
3,200.00	25.00	308.00	3,062.34	438.45	-561.19	-562.26	0.00	0.00	0.00	0.00
3,300.00	25.00	308.00	3,152.97	464.47	-594.49	-595.62	0.00	0.00	0.00	0.00
3,400.00	25.00	308.00	3,243.60	490.49	-627.79	-628.99	0.00	0.00	0.00	0.00
3,500.00	25.00	308.00	3,334.23	516.50	-661.10	-662.36	0.00	0.00	0.00	0.00
3,600.00	25.00	308.00	3,424.86	542.52	-694.40	-695.72	0.00	0.00	0.00	0.00
3,700.00	25.00	308.00	3,515.49	568.54	-727.70	-729.09	0.00	0.00	0.00	0.00
3,800.00	25.00	308.00	3,606.12	594.56	-761.00	-762.45	0.00	0.00	0.00	0.00
3,849.52	25.00	308.00	3,651.00	607.45	-777.50	-778.98	0.00	0.00	0.00	0.00
Parkman										
3,900.00	25.00	308.00	3,696.75	620.58	-794.31	-795.82	0.00	0.00	0.00	0.00
4,000.00	25.00	308.00	3,787.38	646.60	-827.61	-829.19	0.00	0.00	0.00	0.00
4,100.00	25.00	308.00	3,878.01	672.62	-860.91	-862.55	0.00	0.00	0.00	0.00
4,200.00	25.00	308.00	3,968.64	698.64	-894.22	-895.92	0.00	0.00	0.00	0.00
4,300.00	25.00	308.00	4,059.27	724.66	-927.52	-929.29	0.00	0.00	0.00	0.00
4,400.00	25.00	308.00	4,149.90	750.68	-960.82	-962.65	0.00	0.00	0.00	0.00

Plan Report for Whisper Rock 5N-25HZ - Permit Rev-3

Measured Depth (usft)	Inclination (°)	Azimuth (°)	Vertical Depth (usft)	+N/-S (usft)	+E/-W (usft)	Vertical Section (usft)	Dogleg Rate (°/100usft)	Build Rate (°/100usft)	Turn Rate (°/100usft)	Toolface Azimuth (°)
4,500.00	25.00	308.00	4,240.54	776.69	-994.12	-996.02	0.00	0.00	0.00	0.00
4,513.75	25.00	308.00	4,253.00	780.27	-998.70	-1,000.61	0.00	0.00	0.00	0.00
Sussex										
4,600.00	25.00	308.00	4,331.17	802.71	-1,027.43	-1,029.38	0.00	0.00	0.00	0.00
4,700.00	25.00	308.00	4,421.80	828.73	-1,060.73	-1,062.75	0.00	0.00	0.00	0.00
4,800.00	25.00	308.00	4,512.43	854.75	-1,094.03	-1,096.12	0.00	0.00	0.00	0.00
4,900.00	25.00	308.00	4,603.06	880.77	-1,127.33	-1,129.48	0.00	0.00	0.00	0.00
5,000.00	25.00	308.00	4,693.69	906.79	-1,160.64	-1,162.85	0.00	0.00	0.00	0.00
5,100.00	25.00	308.00	4,784.32	932.81	-1,193.94	-1,196.22	0.00	0.00	0.00	0.00
Begin Drop @ 5100.00ft										
5,200.00	23.00	308.00	4,875.67	957.85	-1,225.99	-1,228.33	2.00	-2.00	0.00	180.00
5,300.00	21.00	308.00	4,968.38	980.91	-1,255.51	-1,257.90	2.00	-2.00	0.00	180.00
5,400.00	19.00	308.00	5,062.35	1,001.97	-1,282.46	-1,284.90	2.00	-2.00	0.00	180.00
5,500.00	17.00	308.00	5,157.45	1,020.99	-1,306.81	-1,309.30	2.00	-2.00	0.00	180.00
5,600.00	15.00	308.00	5,253.57	1,037.96	-1,328.53	-1,331.06	2.00	-2.00	0.00	180.00
5,700.00	13.00	308.00	5,350.59	1,052.85	-1,347.59	-1,350.16	2.00	-2.00	0.00	180.00
5,800.00	11.00	308.00	5,448.40	1,065.65	-1,363.97	-1,366.57	2.00	-2.00	0.00	180.00
5,900.00	9.00	308.00	5,546.88	1,076.34	-1,377.66	-1,380.28	2.00	-2.00	0.00	180.00
6,000.00	7.00	308.00	5,645.90	1,084.91	-1,388.62	-1,391.27	2.00	-2.00	0.00	180.00
6,100.00	5.00	308.00	5,745.35	1,091.35	-1,396.86	-1,399.52	2.00	-2.00	0.00	180.00
6,200.00	3.00	308.00	5,845.10	1,095.64	-1,402.36	-1,405.03	2.00	-2.00	0.00	180.00
6,300.00	1.00	308.00	5,945.03	1,097.79	-1,405.11	-1,407.78	2.00	-2.00	0.00	180.00
6,350.00	0.00	0.00	5,995.03	1,098.06	-1,405.45	-1,408.13	2.00	-2.00	104.00	180.00
End Drop @ 6350.00ft										
6,400.00	0.00	0.00	6,045.03	1,098.06	-1,405.45	-1,408.13	0.00	0.00	0.00	180.00
6,500.00	0.00	0.00	6,145.03	1,098.06	-1,405.45	-1,408.13	0.00	0.00	0.00	0.00
6,600.00	0.00	0.00	6,245.03	1,098.06	-1,405.45	-1,408.13	0.00	0.00	0.00	0.00
6,700.00	0.00	0.00	6,345.03	1,098.06	-1,405.45	-1,408.13	0.00	0.00	0.00	0.00
6,800.00	0.00	0.00	6,445.03	1,098.06	-1,405.45	-1,408.13	0.00	0.00	0.00	0.00
6,859.01	0.00	0.00	6,504.04	1,098.06	-1,405.45	-1,408.13	0.00	0.00	0.00	0.00
Top of 4.5" Liner @ 6859.01ft										
6,900.00	0.00	0.00	6,545.03	1,098.06	-1,405.45	-1,408.13	0.00	0.00	0.00	0.00
6,959.01	0.00	0.00	6,604.04	1,098.06	-1,405.45	-1,408.13	0.00	0.00	0.00	0.00
KOP @ 6959.01ft										
7,000.00	4.10	90.14	6,645.00	1,098.05	-1,403.98	-1,406.66	10.00	10.00	0.00	90.14
7,100.00	14.10	90.14	6,743.61	1,098.02	-1,388.19	-1,390.87	10.00	10.00	0.00	0.00
7,200.00	24.10	90.14	6,837.99	1,097.94	-1,355.51	-1,358.19	10.00	10.00	0.00	0.00
7,300.00	34.10	90.14	6,925.26	1,097.82	-1,306.94	-1,309.62	10.00	10.00	0.00	0.00
7,400.00	44.10	90.14	7,002.76	1,097.67	-1,243.95	-1,246.63	10.00	10.00	0.00	0.00
DLS = 10°/100'										
7,451.36	49.24	90.14	7,038.00	1,097.59	-1,206.61	-1,209.28	10.00	10.00	0.00	0.00
SSPG										
7,500.00	54.10	90.14	7,068.16	1,097.50	-1,168.47	-1,171.15	10.00	10.00	0.00	0.00
7,526.15	56.71	90.14	7,083.00	1,097.44	-1,146.94	-1,149.62	10.00	10.00	0.00	0.00
NBRR										
7,600.00	64.10	90.14	7,119.45	1,097.29	-1,082.77	-1,085.45	10.00	10.00	0.00	0.00
7,700.00	74.10	90.14	7,155.08	1,097.07	-989.47	-992.15	10.00	10.00	0.00	0.00
7,751.81	79.28	90.14	7,167.00	1,096.95	-939.07	-941.75	10.00	10.00	0.00	0.00
N470_B_CK										
7,800.00	84.10	90.14	7,173.96	1,096.84	-891.40	-894.08	10.00	10.00	0.00	0.00
7,859.01	90.00	90.14	7,177.00	1,096.70	-832.49	-835.17	10.00	10.00	0.00	0.00
End Build @ 7859.01ft - Landing Target (Heel) - 7"										
7,900.00	90.00	90.14	7,177.00	1,096.60	-791.50	-794.18	0.00	0.00	0.00	0.00
8,000.00	90.00	90.14	7,177.00	1,096.37	-691.50	-694.18	0.00	0.00	0.00	0.00
8,100.00	90.00	90.14	7,177.00	1,096.13	-591.50	-594.18	0.00	0.00	0.00	0.00
8,200.00	90.00	90.14	7,177.00	1,095.89	-491.50	-494.18	0.00	0.00	0.00	0.00
8,300.00	90.00	90.14	7,177.00	1,095.66	-391.50	-394.18	0.00	0.00	0.00	0.00
8,400.00	90.00	90.14	7,177.00	1,095.42	-291.50	-294.18	0.00	0.00	0.00	0.00
8,500.00	90.00	90.14	7,177.00	1,095.18	-191.50	-194.18	0.00	0.00	0.00	0.00

Plan Report for Whisper Rock 5N-25HZ - Permit Rev-3

Measured Depth (usft)	Inclination (°)	Azimuth (°)	Vertical Depth (usft)	+N/-S (usft)	+E/-W (usft)	Vertical Section (usft)	Dogleg Rate (°/100usft)	Build Rate (°/100usft)	Turn Rate (°/100usft)	Toolface Azimuth (°)
8,600.00	90.00	90.14	7,177.00	1,094.94	-91.51	-94.18	0.00	0.00	0.00	0.00
8,700.00	90.00	90.14	7,177.00	1,094.71	8.49	5.82	0.00	0.00	0.00	0.00
8,800.00	90.00	90.14	7,177.00	1,094.47	108.49	105.82	0.00	0.00	0.00	0.00
8,900.00	90.00	90.14	7,177.00	1,094.23	208.49	205.82	0.00	0.00	0.00	0.00
9,000.00	90.00	90.14	7,177.00	1,094.00	308.49	305.82	0.00	0.00	0.00	0.00
9,100.00	90.00	90.14	7,177.00	1,093.76	408.49	405.82	0.00	0.00	0.00	0.00
9,200.00	90.00	90.14	7,177.00	1,093.52	508.49	505.82	0.00	0.00	0.00	0.00
9,300.00	90.00	90.14	7,177.00	1,093.29	608.49	605.82	0.00	0.00	0.00	0.00
9,400.00	90.00	90.14	7,177.00	1,093.05	708.49	705.82	0.00	0.00	0.00	0.00
9,500.00	90.00	90.14	7,177.00	1,092.81	808.49	805.82	0.00	0.00	0.00	0.00
9,600.00	90.00	90.14	7,177.00	1,092.58	908.49	905.82	0.00	0.00	0.00	0.00
9,700.00	90.00	90.14	7,177.00	1,092.34	1,008.49	1,005.82	0.00	0.00	0.00	0.00
9,800.00	90.00	90.14	7,177.00	1,092.10	1,108.49	1,105.82	0.00	0.00	0.00	0.00
9,900.00	90.00	90.14	7,177.00	1,091.87	1,208.49	1,205.82	0.00	0.00	0.00	0.00
10,000.00	90.00	90.14	7,177.00	1,091.63	1,308.49	1,305.82	0.00	0.00	0.00	0.00
10,100.00	90.00	90.14	7,177.00	1,091.39	1,408.49	1,405.82	0.00	0.00	0.00	0.00
10,200.00	90.00	90.14	7,177.00	1,091.15	1,508.49	1,505.82	0.00	0.00	0.00	0.00
10,300.00	90.00	90.14	7,177.00	1,090.92	1,608.49	1,605.82	0.00	0.00	0.00	0.00
10,400.00	90.00	90.14	7,177.00	1,090.68	1,708.49	1,705.82	0.00	0.00	0.00	0.00
10,500.00	90.00	90.14	7,177.00	1,090.44	1,808.49	1,805.82	0.00	0.00	0.00	0.00
10,600.00	90.00	90.14	7,177.00	1,090.21	1,908.49	1,905.82	0.00	0.00	0.00	0.00
10,700.00	90.00	90.14	7,177.00	1,089.97	2,008.49	2,005.82	0.00	0.00	0.00	0.00
10,800.00	90.00	90.14	7,177.00	1,089.73	2,108.49	2,105.82	0.00	0.00	0.00	0.00
10,900.00	90.00	90.14	7,177.00	1,089.50	2,208.49	2,205.82	0.00	0.00	0.00	0.00
11,000.00	90.00	90.14	7,177.00	1,089.26	2,308.49	2,305.82	0.00	0.00	0.00	0.00
11,100.00	90.00	90.14	7,177.00	1,089.02	2,408.49	2,405.82	0.00	0.00	0.00	0.00
11,200.00	90.00	90.14	7,177.00	1,088.79	2,508.49	2,505.82	0.00	0.00	0.00	0.00
11,300.00	90.00	90.14	7,177.00	1,088.55	2,608.49	2,605.82	0.00	0.00	0.00	0.00
11,400.00	90.00	90.14	7,177.00	1,088.31	2,708.49	2,705.82	0.00	0.00	0.00	0.00
11,500.00	90.00	90.14	7,177.00	1,088.08	2,808.49	2,805.82	0.00	0.00	0.00	0.00
11,600.00	90.00	90.14	7,177.00	1,087.84	2,908.49	2,905.82	0.00	0.00	0.00	0.00
11,700.00	90.00	90.14	7,177.00	1,087.60	3,008.49	3,005.82	0.00	0.00	0.00	0.00
11,800.00	90.00	90.14	7,177.00	1,087.36	3,108.49	3,105.82	0.00	0.00	0.00	0.00
11,900.00	90.00	90.14	7,177.00	1,087.13	3,208.49	3,205.82	0.00	0.00	0.00	0.00
12,000.00	90.00	90.14	7,177.00	1,086.89	3,308.49	3,305.82	0.00	0.00	0.00	0.00
12,100.00	90.00	90.14	7,177.00	1,086.65	3,408.48	3,405.82	0.00	0.00	0.00	0.00
12,200.00	90.00	90.14	7,177.00	1,086.42	3,508.48	3,505.82	0.00	0.00	0.00	0.00
12,300.00	90.00	90.14	7,177.00	1,086.18	3,608.48	3,605.82	0.00	0.00	0.00	0.00
12,400.00	90.00	90.14	7,177.00	1,085.94	3,708.48	3,705.82	0.00	0.00	0.00	0.00
12,500.00	90.00	90.14	7,177.00	1,085.71	3,808.48	3,805.82	0.00	0.00	0.00	0.00
12,600.00	90.00	90.14	7,177.00	1,085.47	3,908.48	3,905.82	0.00	0.00	0.00	0.00
12,700.00	90.00	90.14	7,177.00	1,085.23	4,008.48	4,005.82	0.00	0.00	0.00	0.00
12,800.00	90.00	90.14	7,177.00	1,085.00	4,108.48	4,105.82	0.00	0.00	0.00	0.00
12,900.00	90.00	90.14	7,177.00	1,084.76	4,208.48	4,205.82	0.00	0.00	0.00	0.00
13,000.00	90.00	90.14	7,177.00	1,084.52	4,308.48	4,305.82	0.00	0.00	0.00	0.00
13,100.00	90.00	90.14	7,177.00	1,084.28	4,408.48	4,405.82	0.00	0.00	0.00	0.00
13,200.00	90.00	90.14	7,177.00	1,084.05	4,508.48	4,505.82	0.00	0.00	0.00	0.00
13,300.00	90.00	90.14	7,177.00	1,083.81	4,608.48	4,605.82	0.00	0.00	0.00	0.00
13,400.00	90.00	90.14	7,177.00	1,083.57	4,708.48	4,705.82	0.00	0.00	0.00	0.00
13,500.00	90.00	90.14	7,177.00	1,083.34	4,808.48	4,805.82	0.00	0.00	0.00	0.00
13,600.00	90.00	90.14	7,177.00	1,083.10	4,908.48	4,905.82	0.00	0.00	0.00	0.00
13,700.00	90.00	90.14	7,177.00	1,082.86	5,008.48	5,005.82	0.00	0.00	0.00	0.00
13,730.05	90.00	90.14	7,177.00	1,082.79	5,038.53	5,035.87	0.00	0.00	0.00	0.00
Total Depth (Toe)										
13,730.06	90.00	90.14	7,177.00	1,082.79	5,038.54	5,035.88	0.00	0.00	0.00	0.00
TD Well @ 13730.06ft - Whisper Rock 5N-25HZ_BHL										

Plan Report for Whisper Rock 5N-25HZ - Permit Rev-3

Plan Annotations

Measured Depth (usft)	Vertical Depth (usft)	Local Coordinates		Comment
		+N/-S (usft)	+E/-W (usft)	
900.00	900.00	0.00	0.00	Begin Nudge @ 900.00ft
2,150.00	2,110.71	165.25	-211.51	End Nudge @ 2150.00ft
5,100.00	4,784.32	932.81	-1,193.94	Begin Drop @ 5100.00ft
6,350.00	5,995.03	1,098.06	-1,405.45	End Drop @ 6350.00ft
6,859.01	6,504.04	1,098.06	-1,405.45	Top of 4.5" Liner @ 6859.01ft
6,959.01	6,604.04	1,098.06	-1,405.45	KOP @ 6959.01ft
7,400.00	7,002.76	1,097.67	-1,243.95	DLS = 10°/100'
7,859.01	7,177.00	1,096.70	-832.49	End Build @ 7859.01ft
13,730.06	7,177.00	1,082.79	5,038.54	TD Well @ 13730.06ft

Vertical Section Information

Angle Type	Target	Azimuth (°)	Origin Type	Origin		Start TVD (usft)
				+N/_S (usft)	+E/-W (usft)	
User	No Target (Freehand)	90.14	Slot	0.00	0.00	0.00

Survey tool program

From (usft)	To (usft)	Survey/Plan	Survey Tool
0.00	7,859.01	Permit Rev-3	MWD+IFR1
7,859.01	13,730.06	Permit Rev-3	MWD+IFR1

Casing Details

Measured Depth (usft)	Vertical Depth (usft)	Name	Casing Diameter (")	Hole Diameter (")
754.00	754.00	9 5/8"	9-5/8	13-1/2
7,859.01	7,177.00	7"	7	8-3/4

Formation Details

Measured Depth (usft)	Vertical Depth (usft)	Name	Lithology	Dip (°)	Dip Direction (°)
469.00	469.00	Base Fox Hills		0.00	
754.00	754.00	Surface Csg Setting Depth		0.00	
3,849.52	3,651.00	Parkman		0.00	
4,513.75	4,253.00	Sussex		0.00	
7,451.36	7,038.00	SSPG		0.00	
7,526.15	7,083.00	NBRR		0.00	
7,751.81	7,167.00	N470_B_CK		0.00	
7,859.01	7,177.00	Landing Target (Heel)		0.00	
13,730.05	7,177.00	Total Depth (Toe)		0.00	

Plan Report for Whisper Rock 5N-25HZ - Permit Rev-3

Targets associated with this wellbore

Target Name	TVD (usft)	+N/-S (usft)	+E/-W (usft)	Shape
4N-R68W-Sec. 26_Section Lines	88.00	2,703.88	-554.38	Polygon
Whisper Rock 5N-25HZ_LD	0.00	0.00	0.00	Polygon
4N-R68W-Sec. 25_Section Lines	88.00	2,703.88	-554.38	Polygon
Whisper Rock 5N-25HZ_SHL	0.00	0.00	0.00	Point
Whisper Rock 5N-25HZ_BHL	7,177.00	1,082.79	5,038.54	Point

North Reference Sheet for Wilson Ranch 9-26HZ Pad - Whisper Rock 5N-25HZ - Plan C

All data is in US Feet unless otherwise stated. Directions and Coordinates are relative to True North Reference.

Vertical Depths are relative to RKB = 17' @ 5057.00usft. Northing and Easting are relative to Whisper Rock 5N-25HZ

Coordinate System is Universal Transverse Mercator (US Survey Feet), Zone 13N (108 W to 102 W) using datum North American Datum 1983, ellipsoid

Projection method is Transverse Mercator (Gauss-Kruger)

Central Meridian is -105.00°, Longitude Origin:0.000000°, Latitude Origin:0.000000°

False Easting: 1,640,416.67usft, False Northing: 0.00usft, Scale Reduction: 0.99960013

Grid Coordinates of Well: 14,629,668.45 usft N, 1,651,167.15 usft E

Geographical Coordinates of Well: 40° 16' 57.60" N, 104° 57' 41.23" W

Grid Convergence at Surface is: 0.02°

Based upon Minimum Curvature type calculations, at a Measured Depth of 13,730.06usft
the Bottom Hole Displacement is 5,153.57usft in the Direction of 77.87° (True).

Magnetic Convergence at surface is: -8.48° (6 November 2014, , IGRF2010)

