



# Kerr-McGee Oil & Gas Onshore LP

A subsidiary of Anadarko Petroleum Corporation

1099 18<sup>th</sup> Street  
Denver, CO 80202  
720-929-6000

January 27, 2015

Matt Lepore  
Director, Colorado Oil and Gas Conservation Commission  
Department of Natural Resources  
The Chancery Building  
1120 Lincoln Street, Suite 801  
Denver, CO 80203

Re: **30 Day Certification Letter - 318A.e**  
ENGLISH FARMS 15C-8HZ (Doc # 400745075)  
Township 1 North, Range 65 West  
Section 8: NWNE  
Unit Acreage: 400  
Unit Spacing: 01N-65W-Sec 05 S2SE  
01N-65W-Sec 08 E2  
Weld County, Colorado

Dear Director Lepore:

Kerr McGee Oil and Gas Onshore LP ("KMG") hereby certifies that KMG owns one hundred percent (100%) of the leasehold interest in the mineral rights in the proposed spacing unit. KMG hereby respectfully requests approval of this boundary well.

If you have any questions or issues regarding this permit, please contact Cheryl Light at (720) 929-6461.

Very truly yours,

**Kerr-McGee Oil and Gas Onshore LP**

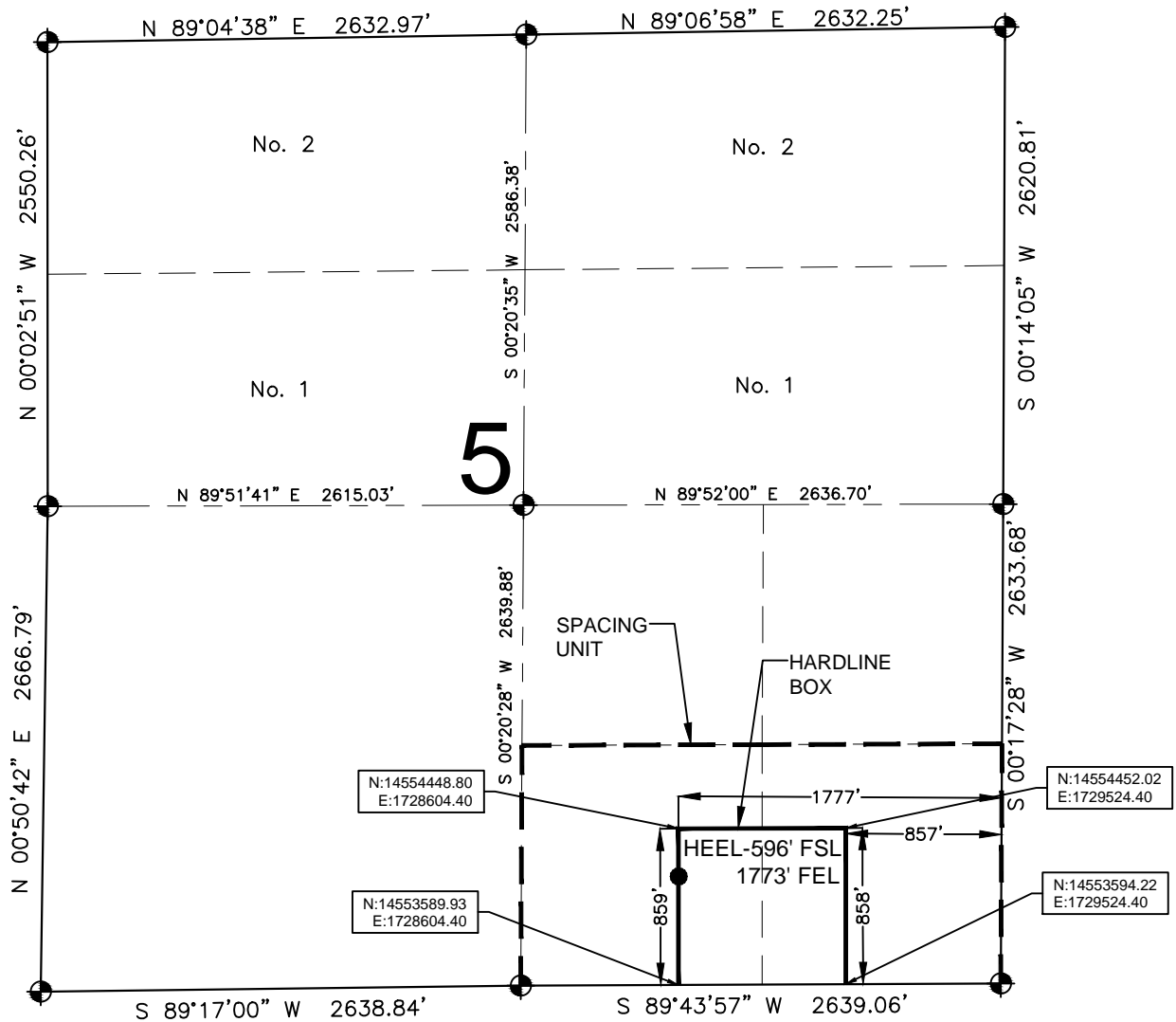
A handwritten signature in black ink, appearing to read 'Mike McConaughy'.

Mike McConaughy  
Sr. Regulatory Analyst

Enclosure

# HARDLINE EXHIBIT: ENGLISH FARMS 15C-8HZ

SECTION 5, TOWNSHIP 1 NORTH, RANGE 65 WEST, 6TH P.M.



## LEGEND

- = EXISTING MONUMENT    ● = BOTTOM HOLE  
● = PROPOSED HEEL    BH = BOTTOM HOLE  
○ = CALCULATED POSITION

## HEEL LOCATION

UTM 13  
LATITUDE= 40.074960°  
LONGITUDE= 104.684749°  
  
LATITUDE= 40°04'29.857"  
LONGITUDE= 104°41'05.095"

## QRT/QRT SECTIONS WITHIN PATH OF THE HARDLINE

SWSE, SEC. 5  
SESE, SEC. 5

## BOTTOM HOLE LOCATION

NAD83  
LATITUDE= 40.060025°  
LONGITUDE= 104.684733°  
  
LATITUDE= 40°03'36.090"  
LONGITUDE= 104°41'05.039"

## AVAILABLE FOOTAGE

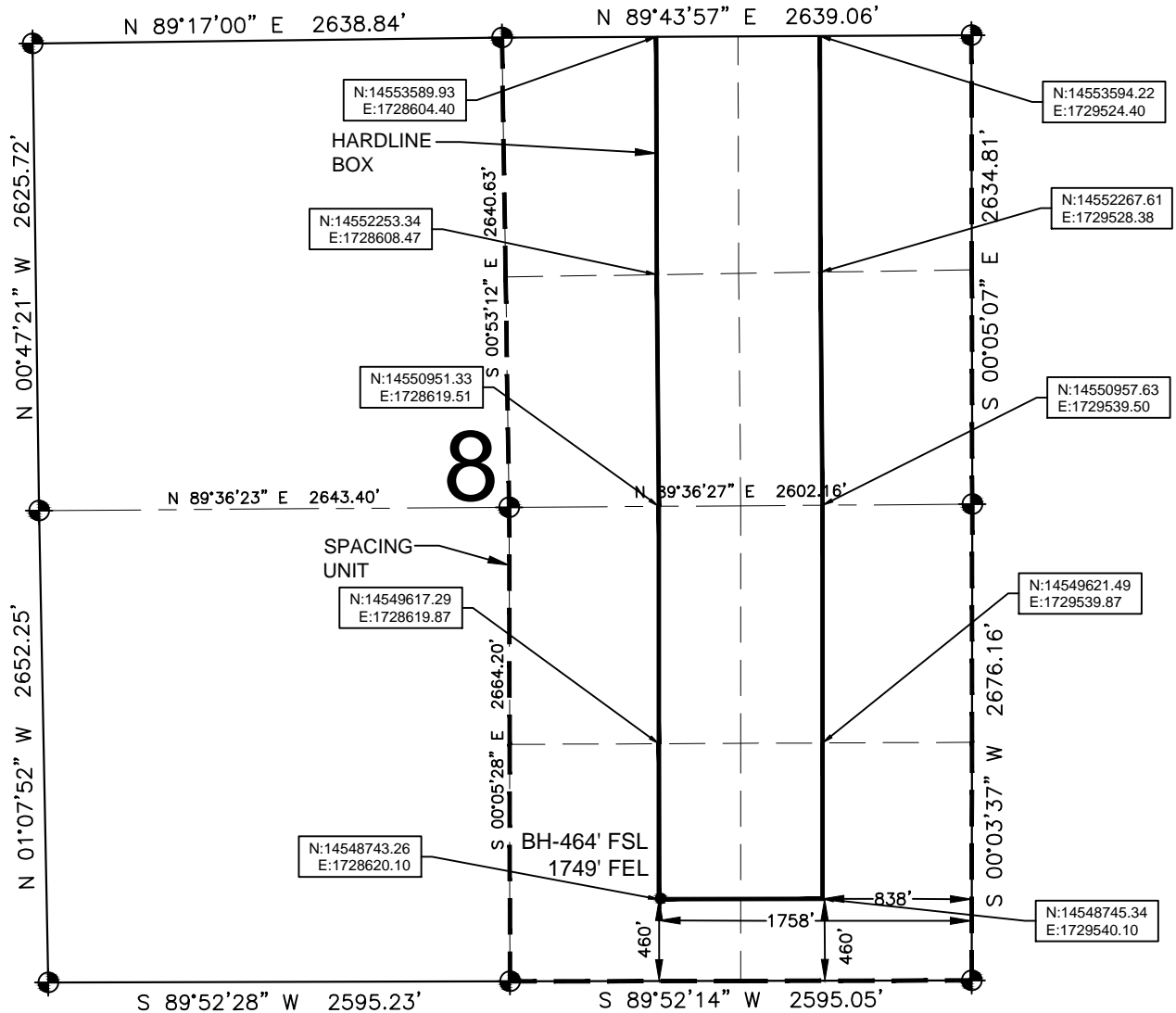
5707'

## NOTES:

1. THIS DOCUMENT IS NOT A LAND SURVEY PLAT OR IMPROVEMENT SURVEY PLAT. THIS DOCUMENT DOES NOT REFLECT A FIELD SURVEY. SECTION BREAKDOWN, MONUMENTATION AND HORIZONTAL POSITIONS SHOWN ARE BASED ON THE HEEL AND BOTTOM HOLE LOCATION PROVIDED BY ANADARKO PETROLEUM CORPORATION

# HARDLINE EXHIBIT: ENGLISH FARMS 15C-8HZ

SECTION 8, TOWNSHIP 1 NORTH, RANGE 65 WEST, 6TH P.M.



## LEGEND

- = EXISTING MONUMENT
- = PROPOSED HEEL
- = CALCULATED POSITION
- ◆ = BOTTOM HOLE
- BH = BOTTOM HOLE

## QRT/QRT SECTIONS WITHIN PATH OF THE HARDLINE

- NWNE, SEC. 8
- SWNE, SEC. 8
- NWSE, SEC. 8
- SWSE, SEC. 8
- NENE, SEC. 8
- SENE, SEC. 8
- NESE, SEC. 8
- SESE, SEC. 8

## NOTES:

- THIS DOCUMENT IS NOT A LAND SURVEY PLAT OR IMPROVEMENT SURVEY PLAT. THIS DOCUMENT DOES NOT REFLECT A FIELD SURVEY. SECTION BREAKDOWN, MONUMENTATION AND HORIZONTAL POSITIONS SHOWN ARE BASED ON THE HEEL AND BOTTOM HOLE LOCATION PROVIDED BY ANADARKO PETROLEUM CORPORATION