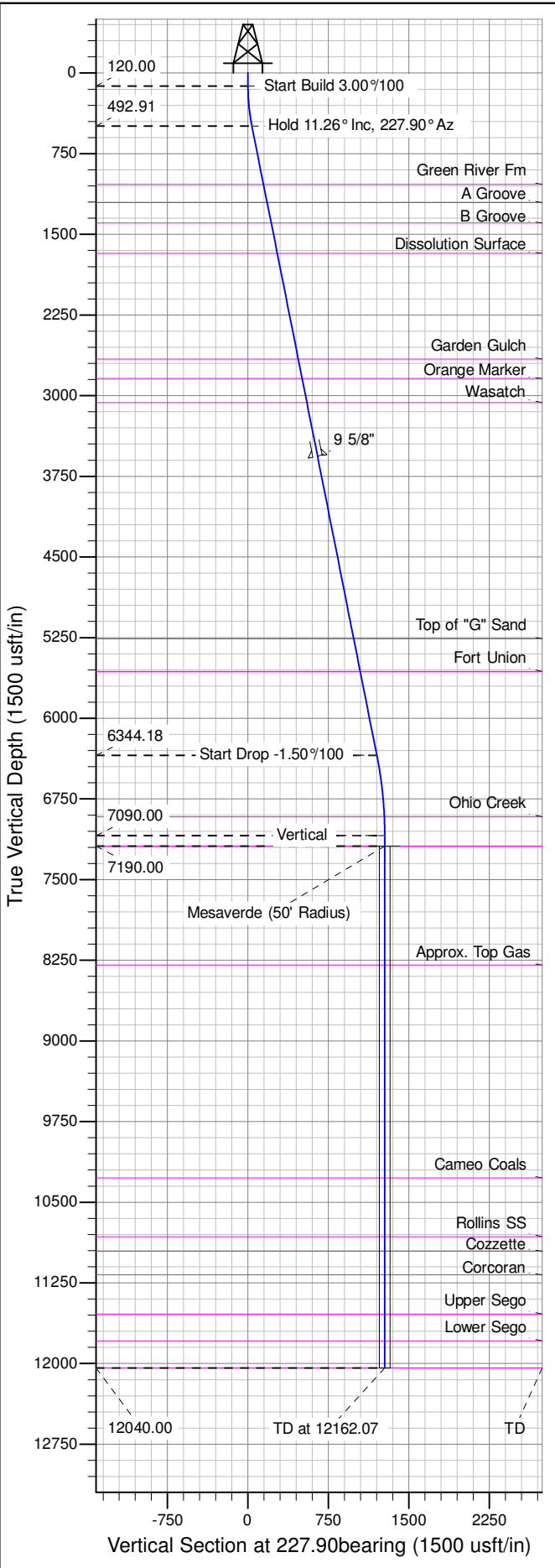




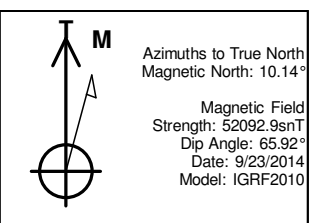
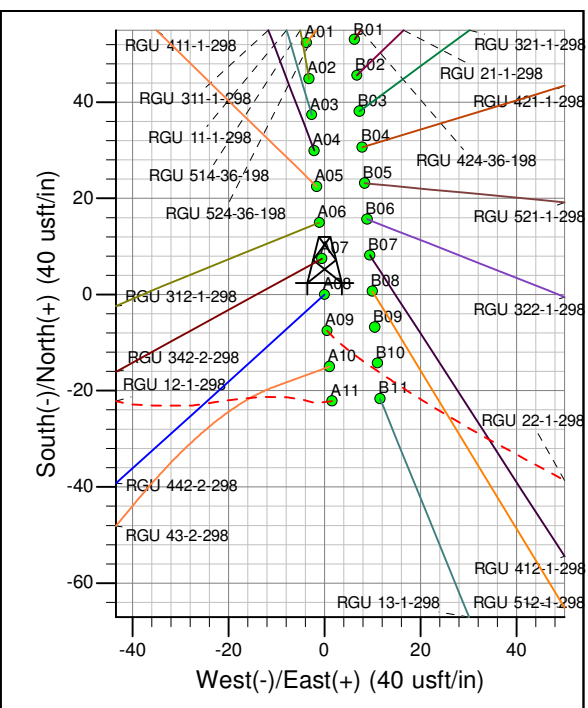
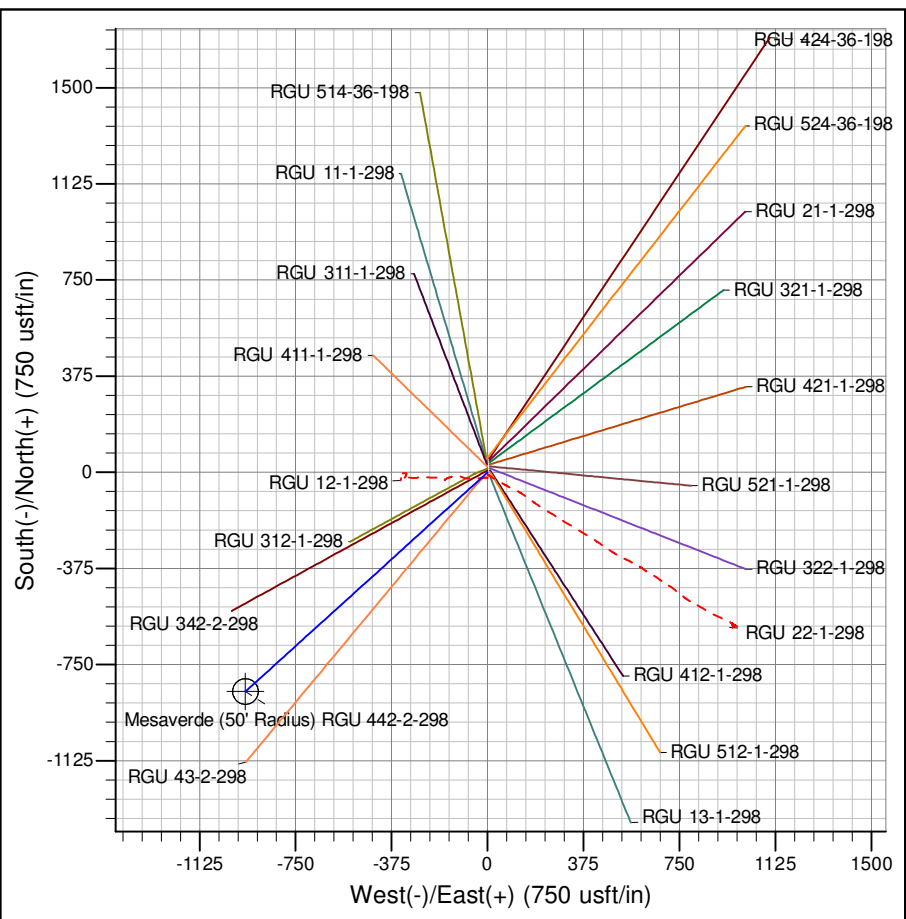
Well Name: RGU 442-2-298
 Surface Location: RGU 12-1-298 Pad
 North American Datum 1983 , US State Plane 1983 , Colorado Central Zone
 Ground Elevation: 6624.00

+N/-S +E/-W Northing Easting Latitude Longitude Slot
 0.00 0.00 1768464.10 2201148.90 39.908871 -108.347964 A08
 KELLY BUSHING @ 6645.00usft (Cyclone 29 (21'KB) mab)



ANNOTATIONS

TVD	MD	Inc	Azi	+N/-S	+E/-W	VSect	Departure	Annotation
120.00	120.00	0.00	0.00	0.00	0.00	0.00	0.00	Start Build 3.00%/100
492.91	495.32	11.26	227.90	-24.64	-27.28	36.76	36.76	Hold 11.26° Inc, 227.90° Az
6344.18	6461.42	11.26	227.90	-805.56	-891.68	1201.68	1201.68	Start Drop -1.50%/100
7090.00	7212.07	0.00	0.00	-854.85	-946.23	1275.20	1275.20	Vertical
7190.00	7312.07	0.00	0.00	-854.85	-946.23	1275.20	1275.20	Mesaverde
12040.00	12162.07	0.00	0.00	-854.85	-946.23	1275.20	1275.20	TD at 12162.07



Project: RGU 01-02S-098W
 Site: RGU 12-1-298 Pad
 Well: RGU 442-2-298
 Design #1 23Sep14 mab