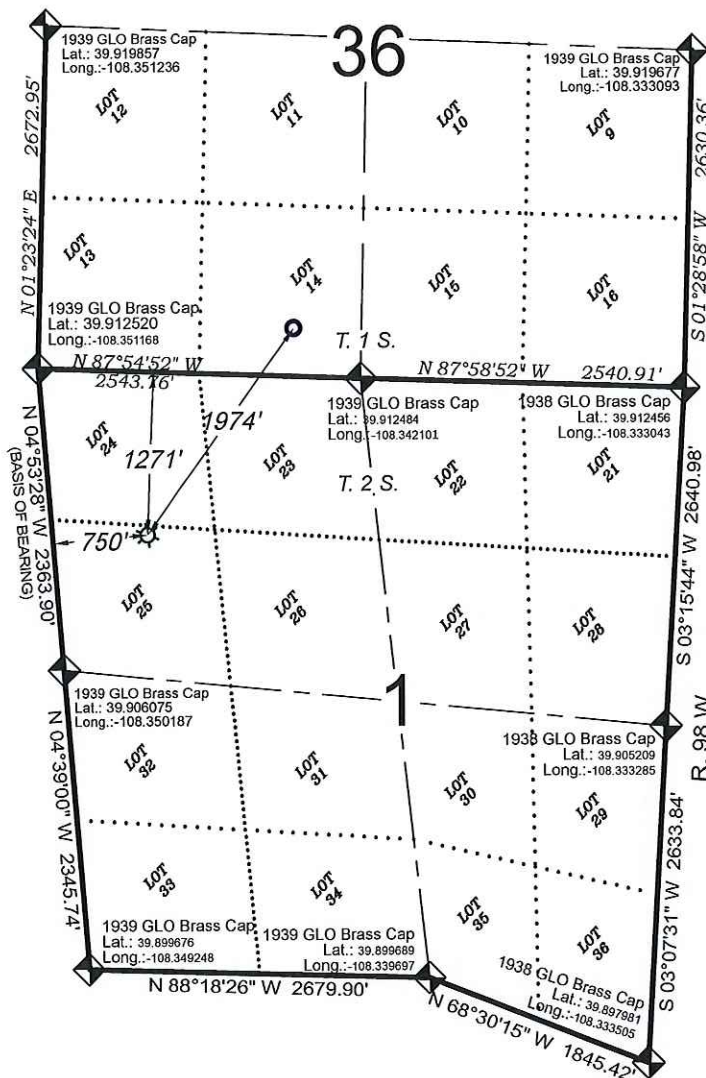
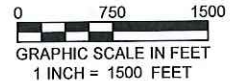


Federal RGU 424-36-198



SURFACE HOLE LOCATION
 1271 FNL, 750 FWL
 Lat.: 39.909017°
 Long.: -108.347942°
 N.: 1768517.0 (COSP)
 E.: 2201156.8 (COSP)



BOTTOM HOLE LOCATION
 376 FSL, 2004 FWL
 Lat.: 39.913525°N
 Long.: -108.344035°W
 N.: 1770124.1(COSP)
 E.: 2202303.7(COSP)

PROPOSED PAD ELEV.: 6623.7
 EXISTING GROUND ELEV.: 6624.7

THERE ARE NO VISIBLE
 IMPROVEMENTS WITHIN 500'
 OF THIS LOCATION

SURVEYORS STATEMENT

I, MICHAEL J. LANGHORNE, A REGISTERED LAND SURVEYOR IN THE STATE OF COLORADO DO HEREBY CERTIFY THAT THE SURVEY SHOWN HEREON WAS PREPARED UNDER MY DIRECT SUPERVISION AND HAS BEEN STAKED ON THE GROUND AS SHOWN ON THE PLAT AND CHECKING THAT THIS MAP IS A TRUE REPRESENTATION THEREOF.

Michael J. Langhorne

MICHAEL J. LANGHORNE, COLORADO REGISTRATION NO. 36572
 FOR AND ON BEHALF OF
 BOOKCLIFF SURVEY SERVICES, INC.

REFERENCES

- 1) CORRECTIVE DEPENDENT RESURVEY T. 2 S., R. 98 W., 6th P.M (GLO PLAT)
- 2) U.S.G.S. QUAD: Rock School and Square S Ranch, CO

REVISED: 12/3/14

136 East Third Street
 Rifle, Colorado
 81650 Ph. (970)
 625-2720 Fax (970)
 625-2773



BOOKCLIFF
 Survey Services, Inc.

SURVEY DATE: 10/24/14
 MAP DATE: 10/27/14
 SCALE: 1" = 1500'
 PLAT: 1 of 1
 PROJECT: Highlands

- LEGEND -

FIELD LOCATED SECTION
 MONUMENTS AS DESCRIBED



FIELD SURVEYED
 WELL LOCATION



CALCULATED BOTTOM
 HOLE LOCATION



CALCULATED SECTION
 CORNER LOCATION



NOTES

- 1) ELEVATIONS BASED ON N.A.V.D. 1988 PUBLISHED COORDINATES.
- 2) LATITUDES AND LONGITUDES ARE BASED ON NAD 83, PUBLISHED COORDINATES.
- 3) STATE PLANE COORDINATES ARE BASED ON COLORADO CENTRAL ZONE, U.S. SURVEY FEET.
- 4) ELEVATION MASK SET TO 15"
- 5) GPS OPERATOR W. KIRKPATRICK, OBSERVED A PDOP OF 2.5 FOR SURVEY POINT NUMBER 320.
- 6) SURFACE AND BOTTOM HOLE LOCATIONS ARE MEASURED 90° FROM SECTION LINES.

WELL LOCATION PLAT Prepared for:
WPXENERGY

WPX Energy Rocky Mountain, LLC

SW1/4 NW1/4, SECTION 1
 T. 2 S., R. 98 W. of the 6th P.M.
 RIO BLANCO COUNTY, COLORADO