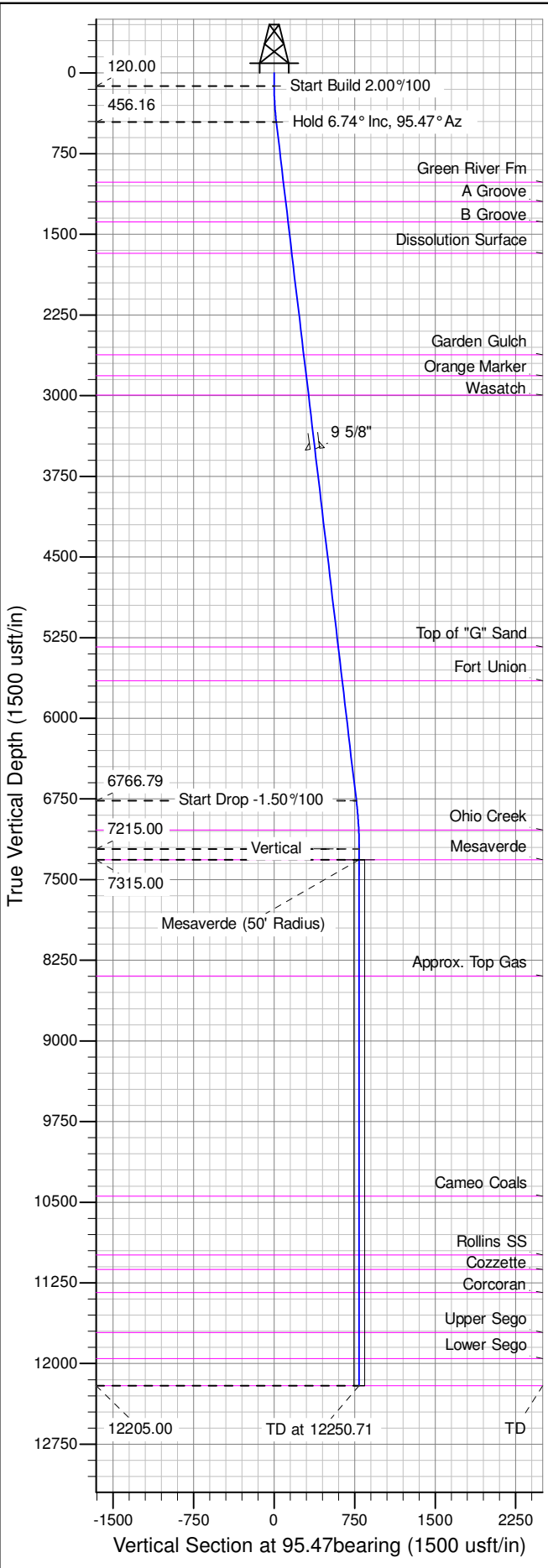
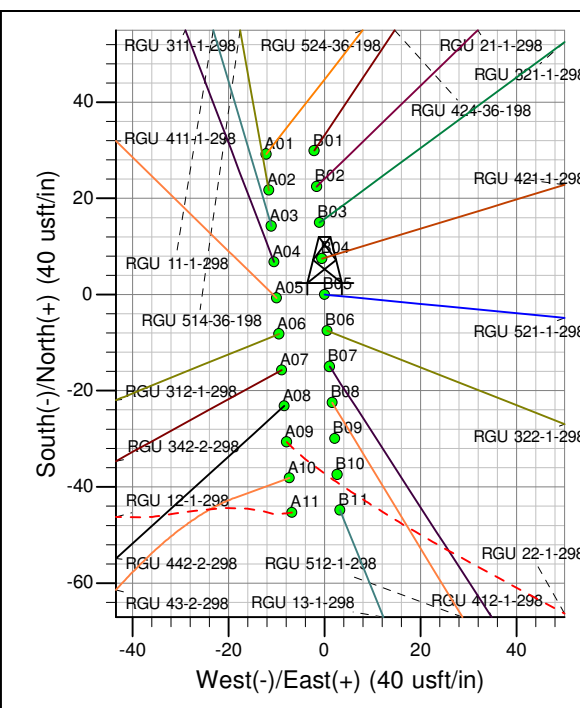
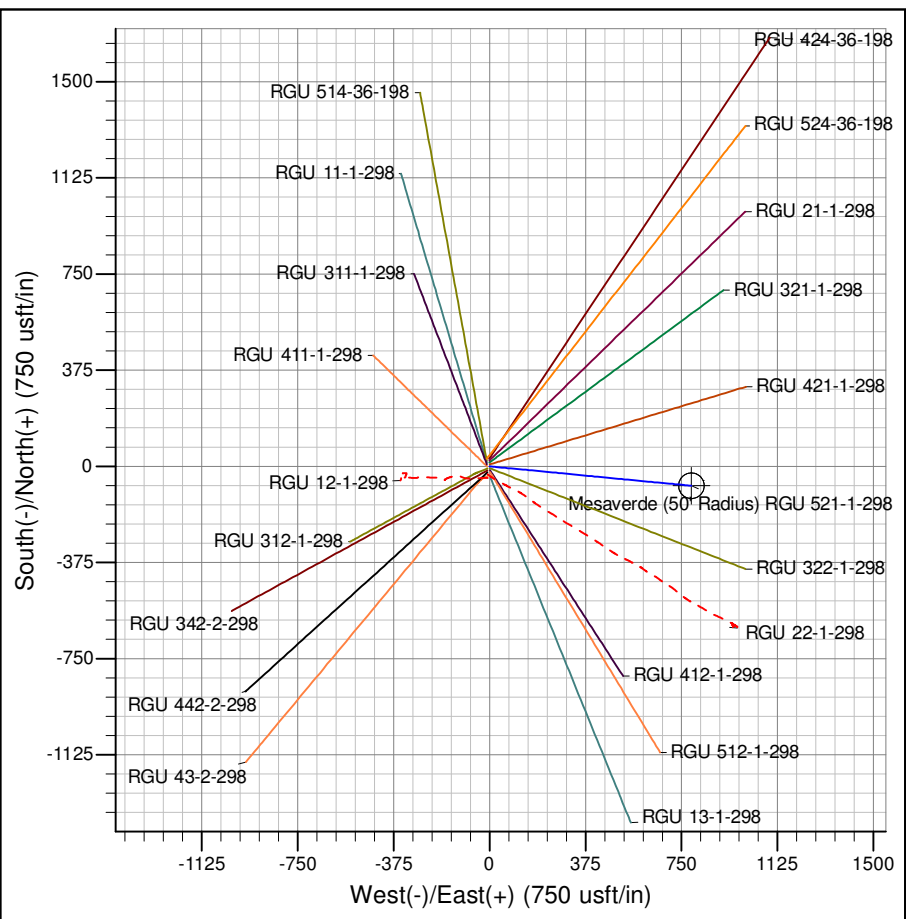




Well Name: RGU 521-1-298
Surface Location: RGU 12-1-298 Pad
North American Datum 1983 , US State Plane 1983 , Colorado Central Zone
Ground Elevation: 6624.00
+N/-S +E/-W Northing Easting Latitude Longitude Slot
0.00 0.00 1768487.00 2201158.00 39.908935 -108.347934 B05
KELLY BUSHING @ 6645.00usft (Cyclone 29 (21'KB) mab)



ANNOTATIONS									
TVD	MD	Inc	Azi	+N/-S	+E/-W	VSect	Departure	Annotation	
120.00	120.00	0.00	0.00	0.00	0.00	0.00	0.00	Start Build	2.00%/100
456.16	456.93	6.74	95.47	-1.89	19.70	19.79	19.79	Hold	6.74° Inc, 95.47° Az
6766.79	6811.47	6.74	95.47	-72.91	761.96	765.44	765.44	Start Drop	-1.50%/100
7215.00	7260.71	0.00	0.00	-75.43	788.22	791.82	791.82	Vertical	
7315.00	7360.71	0.00	0.00	-75.43	788.22	791.82	791.82	Mesaverde	
12205.00	12250.71	0.00	0.00	-75.43	788.22	791.82	791.82	TD at	12250.71



Azimuths to True North
Magnetic North: 11.09°

Magnetic Field
Strength: 52862.1snT
Dip Angle: 66.13°
Date: 4/13/2007
Model: IGRF2005-10

Project: RG 01-02S-098W
Site: RGU 12-1-298 Pad
Well: RGU 521-1-298
Design #2 23Sep14 mab