



Kerr-McGee Oil & Gas Onshore LP

A subsidiary of Anadarko Petroleum Corporation

1099 18th Street
Denver, CO 80202
720-929-6000

January 23, 2015

Matt Lepore
Director, Colorado Oil and Gas Conservation Commission
Department of Natural Resources
The Chancery Building
1120 Lincoln Street, Suite 801
Denver, CO 80203

Re: **30 Day Certification Letter - 318A.e**
WHISPER ROCK 3C-25HZ (Doc No. 400765721)
Township 4 North, Range 68 West
Section 26: NESE
Unit Acreage: 480 acres
Unit Spacing: 04N-68W-Sec 25 S2N2, N2S2
04N-68W-Sec 26 S2NE, N2SE
Weld County, Colorado

Dear Director Lepore:

Kerr McGee Oil and Gas Onshore LP ("KMG") hereby certifies that KMG owns one hundred percent (100%) of the leasehold interest in the mineral rights in the proposed spacing unit. KMG hereby respectfully requests approval of this boundary well.

If you have any questions or issues regarding this permit, please contact Cheryl Light at (720) 929-6461.

Sincerely,

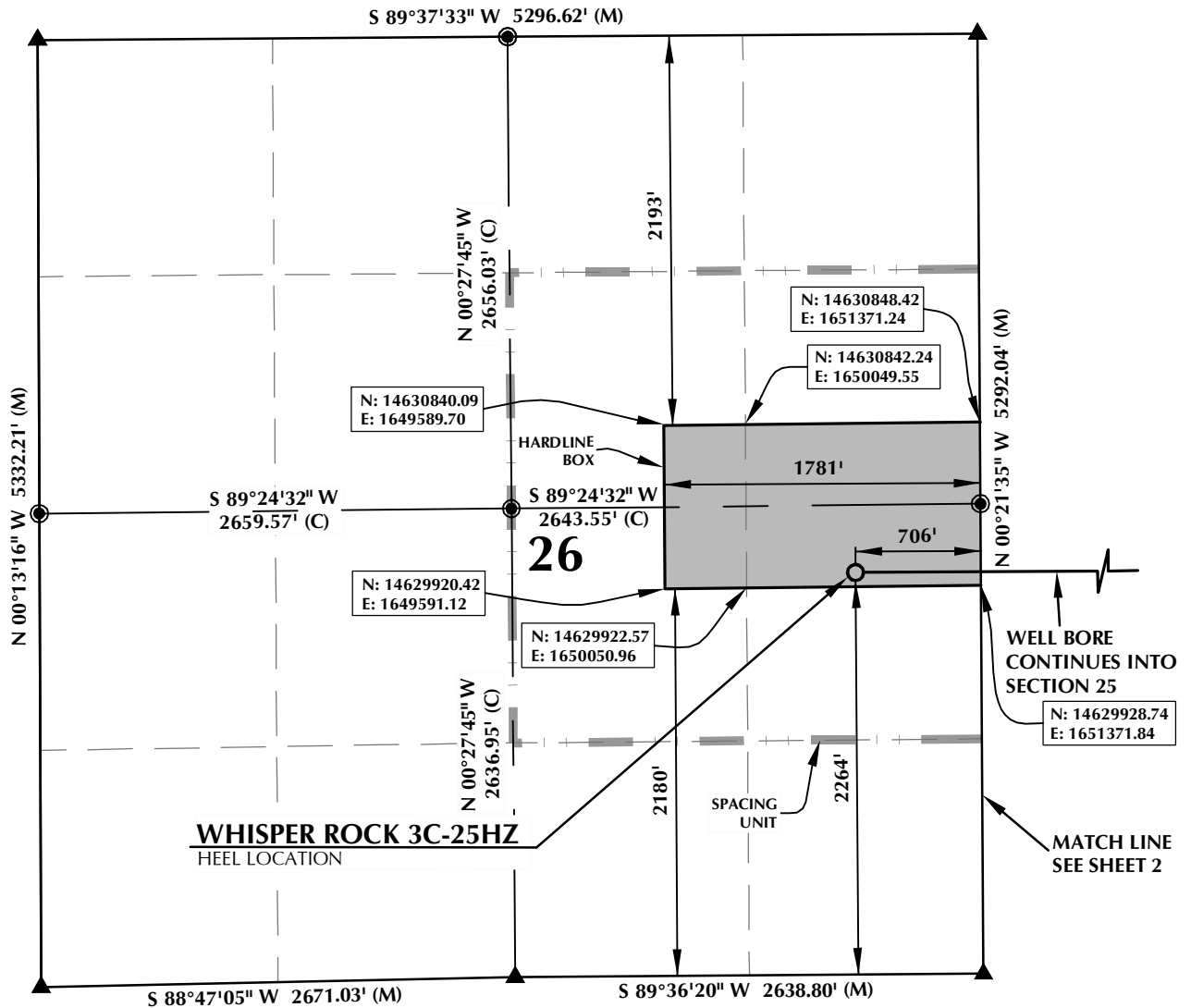
Kerr-McGee Oil and Gas Onshore LP

A handwritten signature in blue ink that reads 'RPowers'.

Ronett Powers
Regulatory Analyst II

Enclosure

SPACING UNIT: WHISPER ROCK 3C-25HZ T4N, R68W



HEEL LOCATION
N: 14,630,005.82'
E: 1,650,666.04'

LATITUDE= 40.283593°
LONGITUDE= -104.963249°

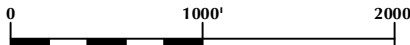
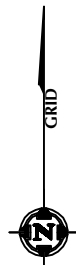
LATITUDE= 40°17'00.935"
LONGITUDE= -104°57'47.697"

AVAILABLE FOOTAGE
6618'

BOTTOM HOLE LOCATION
N: 14,630,011.38'
E: 1,656,206.14'

LATITUDE= 40.283600°
LONGITUDE= -104.943384°

LATITUDE= 40°17'00.961"
LONGITUDE= -104°56'36.184"



SCALE: 1" = 1000'

NOTES:

- ▲ INDICATES FOUND SECTION CORNER
- INDICATES CALCULATED CORNER
- BEARINGS, DISTANCES, AND OFFSETS ARE BASED ON COLORADO COORDINATE SYSTEM 1983, NORTH ZONE
- COMBINED SCALE FACTOR: .99971841
- N / E COORDINATES ARE BASED ON UTM COORDINATE SYSTEM NAD83, ZONE 13
- LATITUDE AND LONGITUDE COORDINATES ARE NAD83 (CORS96)(EPOCH:2002)
- THIS EXHIBIT DOES NOT REPRESENT A LAND SURVEY PLAT OR IMPROVEMENT SURVEY PLAT AS DEFINED BY C.R.S. 38-51-102 AND CANNOT BE RELIED UPON TO DETERMINE OWNERSHIP.

WELL PAD - WILSON RANCH 12N-27HZ

WHISPER ROCK 3C-25HZ
SPACING UNIT EXHIBIT
2264' FSL & 706' FEL NESE (HEEL)
LOCATED IN SECTION 26
2260' FSL & 460' FEL NESE (BOTTOM)
LOCATED IN SECTION 25
T4N, R68W, 6TH P.M.
WELD COUNTY, COLORADO

**Kerr-McGee Oil &
Gas Onshore L.P.**
1099 18th Street
Denver, Colorado 80202



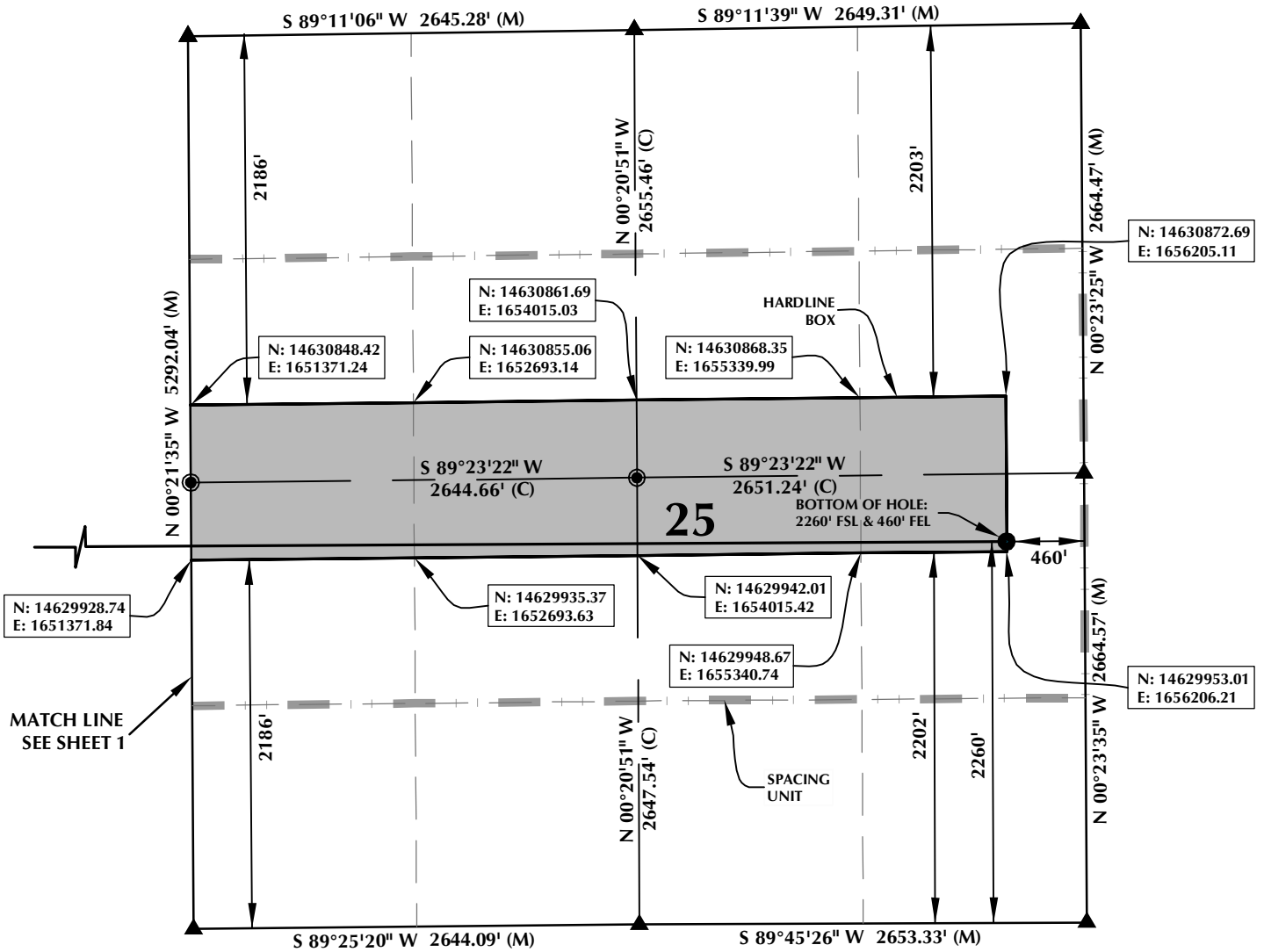
CONSULTING, LLC

SHERIDAN OFFICE
2155 North Main Street
Sheridan, Wyoming 82801
Phone 307-674-0609

LOVELAND OFFICE
1635 Foxtrail Drive, Suite 204
Loveland, Colorado 80538
Phone 970-776-4331

| | | | | |
|---------------|----------|----------------|---------|-----------|
| DRAFTED BY: | LMO | CHECKED BY: | BJR | SHEET NO: |
| DATE DRAFTED: | 9/11/14 | DATE SURVEYED: | 4/23/14 | 1 |
| REVISED: | 12/22/14 | FILE NAME: | 14-19 | 1 OF 2 |

SPACING UNIT: WHISPER ROCK 3C-25HZ T4N, R68W



HEEL LOCATION
N: 14,630,005.82'
E: 1,650,666.04'

LATITUDE= 40.283593°
LONGITUDE= -104.963249°

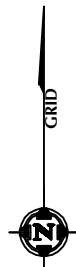
LATITUDE= 40°17'00.935"
LONGITUDE= -104°57'47.697"

AVAILABLE FOOTAGE
6618'

BOTTOM HOLE LOCATION
N: 14,630,011.38'
E: 1,656,206.14'

LATITUDE= 40.283600°
LONGITUDE= -104.943384°

LATITUDE= 40°17'00.961"
LONGITUDE= -104°56'36.184"



SCALE: 1" = 1000'

NOTES:

- ▲ INDICATES FOUND SECTION CORNER
- INDICATES CALCULATED CORNER
- BEARINGS, DISTANCES, AND OFFSETS ARE BASED ON COLORADO COORDINATE SYSTEM 1983, NORTH ZONE
- COMBINED SCALE FACTOR: .99971841
- N / E COORDINATES ARE BASED ON UTM COORDINATE SYSTEM NAD83, ZONE 13
- LATITUDE AND LONGITUDE COORDINATES ARE NAD83 (CORS96)(EPOCH:2002)
- THIS EXHIBIT DOES NOT REPRESENT A LAND SURVEY PLAT OR IMPROVEMENT SURVEY PLAT AS DEFINED BY C.R.S. 38-51-102 AND CANNOT BE RELIED UPON TO DETERMINE OWNERSHIP.

WELL PAD - WILSON RANCH 12N-27HZ

WHISPER ROCK 3C-25HZ
SPACING UNIT EXHIBIT
2264' FSL & 706' FEL NESE (HEEL)
LOCATED IN SECTION 26
2260' FSL & 460' FEL NESE (BOTTOM)
LOCATED IN SECTION 25
T4N, R68W, 6TH P.M.
WELD COUNTY, COLORADO

**Kerr-McGee Oil &
Gas Onshore L.P.**
1099 18th Street
Denver, Colorado 80202



CONSULTING, LLC

SHERIDAN OFFICE
2155 North Main Street
Sheridan, Wyoming 82801
Phone 307-674-0609

LOVELAND OFFICE
1635 Foxtrail Drive, Suite 204
Loveland, Colorado 80538
Phone 970-776-4331

| | | | | |
|---------------|----------|----------------|---------|-----------|
| DRAFTED BY: | LMO | CHECKED BY: | BJR | SHEET NO: |
| DATE DRAFTED: | 9/11/14 | DATE SURVEYED: | 4/23/14 | 2 |
| REVISED: | 12/22/14 | FILE NAME: | 14-19 | 2 OF 2 |