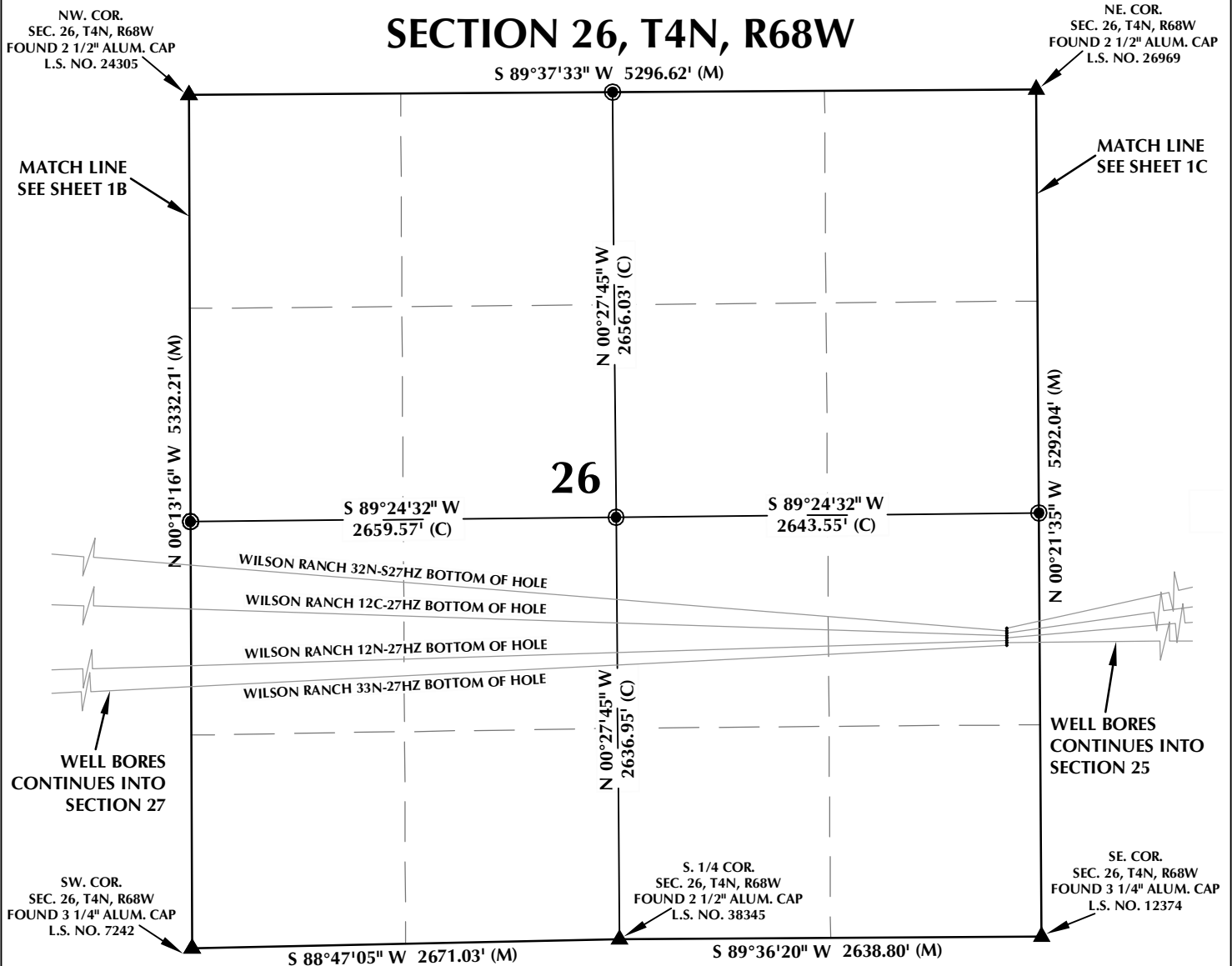


# MULTI-WELL PLAN SECTION 26, T4N, R68W



## WELL NOTES:

WHISPER ROCK 5N-25HZ  
SURFACE: 1926' FSL & 205' FEL  
BOTTOM HOLE: 2322' FNL & 460' FEL

WILSON RANCH 32N-S27HZ  
SURFACE: 1911' FSL, 205' FEL  
BOTTOM HOLE: 2410' FNL, 461' FWL

WHISPER ROCK 6N-25HZ  
SURFACE: 1896' FSL & 205' FEL  
BOTTOM HOLE: 2580' FSL & 460' FEL

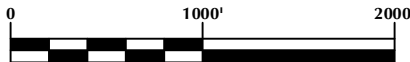
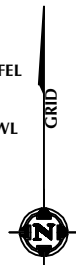
WILSON RANCH 12C-27HZ  
SURFACE: 1881' FSL, 205' FEL  
BOTTOM HOLE: 2384' FSL, 460' FWL

WHISPER ROCK 3C-25HZ  
SURFACE: 1866' FSL & 205' FEL  
BOTTOM HOLE: 2260' FSL & 460' FEL

WILSON RANCH 12N-27HZ  
SURFACE: 1851' FSL, 205' FEL  
BOTTOM HOLE: 1726' FSL, 459' FWL

WHISPER ROCK 7N-25HZ  
SURFACE: 1836' FSL & 206' FEL  
BOTTOM HOLE: 1850' FSL & 460' FEL

WILSON RANCH 33N-27HZ  
SURFACE: 1821' FSL, 206' FEL  
BOTTOM HOLE: 1500' FSL, 460' FWL



SCALE: 1" = 1000'

## NOTES:

- ▲ INDICATES FOUND SECTION CORNER
- INDICATES CALCULATED CORNER
- BASIS OF BEARING DERIVED FROM COLORADO COORDINATE SYSTEM 1983 NORTH ZONE UNLESS OTHERWISE NOTED.
- ALL MEASURED DISTANCES ARE GRID.  
COMBINED SCALE FACTOR: .99971841
- WELL FOOTAGES ARE MEASURED AT RIGHT ANGLES TO THE SECTION LINES.

## WELL PAD - WILSON RANCH 12N-27HZ

MULTI-WELL PLAN  
WHISPER ROCK 5N-25HZ, WILSON RANCH 32N-S27HZ,  
WHISPER ROCK 6N-25HZ, WILSON RANCH 12C-27HZ,  
WHISPER ROCK 3C-25HZ, WILSON RANCH 12N-27HZ,  
WHISPER ROCK 7N-25HZ & WILSON RANCH 33N-27HZ  
LOCATED IN SECTIONS 25, 26 & 27  
T4N, R68W, 6TH P.M.  
WELD COUNTY, COLORADO

**Kerr-McGee Oil &  
Gas Onshore L.P.**  
1099 18th Street  
Denver, Colorado 80202



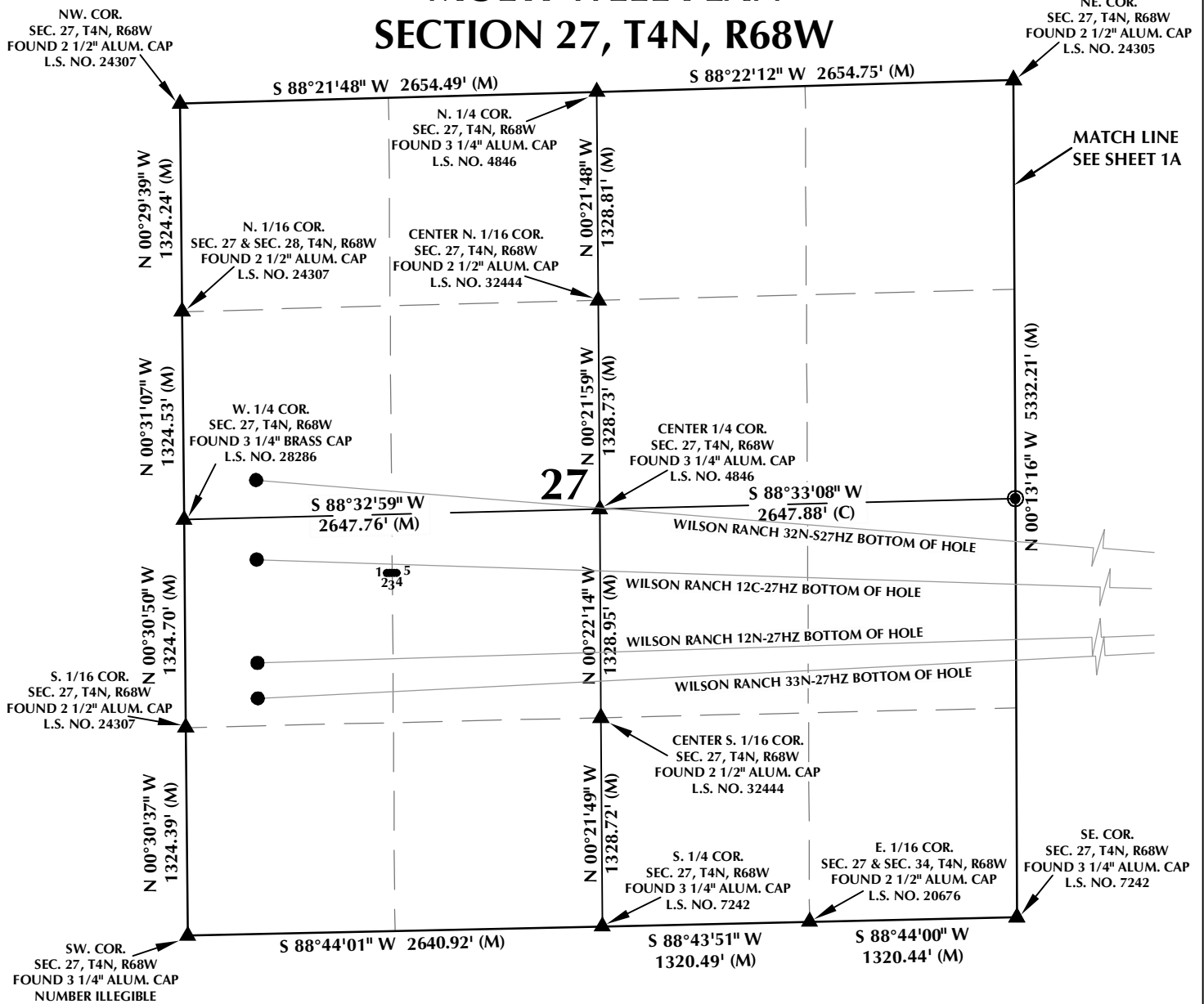
## CONSULTING, LLC

SHERIDAN OFFICE  
2155 North Main Street  
Sheridan, Wyoming 82801  
Phone 307-674-0609

LOVELAND OFFICE  
1635 Foxtrail Drive, Suite 204  
Loveland, Colorado 80538  
Phone 970-776-4331

DRAFTED BY:	LMO	CHECKED BY:	BJR	SHEET NO:
DATE DRAFTED:	5/1/14	DATE SURVEYED:	4/23/14	<b>1A</b>
REVISED:	12/17/14	FILE NAME:	14-19	1A OF 2

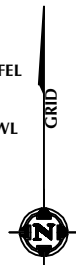
# MULTI-WELL PLAN SECTION 27, T4N, R68W



## WELL NOTES:

WHISPER ROCK 5N-25HZ  
SURFACE: 1926' FSL & 205' FEL  
BOTTOM HOLE: 2322' FNL & 460' FEL  
WILSON RANCH 32N-S27HZ  
SURFACE: 1911' FSL, 205' FEL  
BOTTOM HOLE: 2410' FNL, 461' FWL  
WHISPER ROCK 6N-25HZ  
SURFACE: 1896' FSL & 205' FEL  
BOTTOM HOLE: 2580' FSL & 460' FEL  
WILSON RANCH 12C-27HZ  
SURFACE: 1881' FSL, 205' FEL  
BOTTOM HOLE: 2384' FSL, 460' FWL  
WHISPER ROCK 3C-25HZ  
SURFACE: 1866' FSL & 205' FEL  
BOTTOM HOLE: 2260' FSL & 460' FEL  
WILSON RANCH 12N-27HZ  
SURFACE: 1851' FSL, 205' FEL  
BOTTOM HOLE: 1726' FSL, 459' FWL

WHISPER ROCK 7N-25HZ  
SURFACE: 1836' FSL & 206' FEL  
BOTTOM HOLE: 1850' FSL & 460' FEL  
WILSON RANCH 33N-27HZ  
SURFACE: 1821' FSL, 206' FEL  
BOTTOM HOLE: 1500' FSL, 460' FWL



SCALE: 1" = 1000'

## NOTES:

- ▲ INDICATES FOUND SECTION CORNER
- INDICATES CALCULATED CORNER
- BASIS OF BEARING DERIVED FROM COLORADO COORDINATE SYSTEM 1983 NORTH ZONE UNLESS OTHERWISE NOTED.
- ALL MEASURED DISTANCES ARE GRID.
- COMBINED SCALE FACTOR: .99971841
- WELL FOOTAGES ARE MEASURED AT RIGHT ANGLES TO THE SECTION LINES.

## WELL PAD - WILSON RANCH 12N-27HZ

MULTI-WELL PLAN  
WHISPER ROCK 5N-25HZ, WILSON RANCH 32N-S27HZ,  
WHISPER ROCK 6N-25HZ, WILSON RANCH 12C-27HZ,  
WHISPER ROCK 3C-25HZ, WILSON RANCH 12N-27HZ,  
WHISPER ROCK 7N-25HZ & WILSON RANCH 33N-27HZ  
LOCATED IN SECTIONS 25, 26 & 27  
T4N, R68W, 6TH P.M.  
WELD COUNTY, COLORADO

**Kerr-McGee Oil &  
Gas Onshore L.P.**  
1099 18th Street  
Denver, Colorado 80202



## CONSULTING, LLC

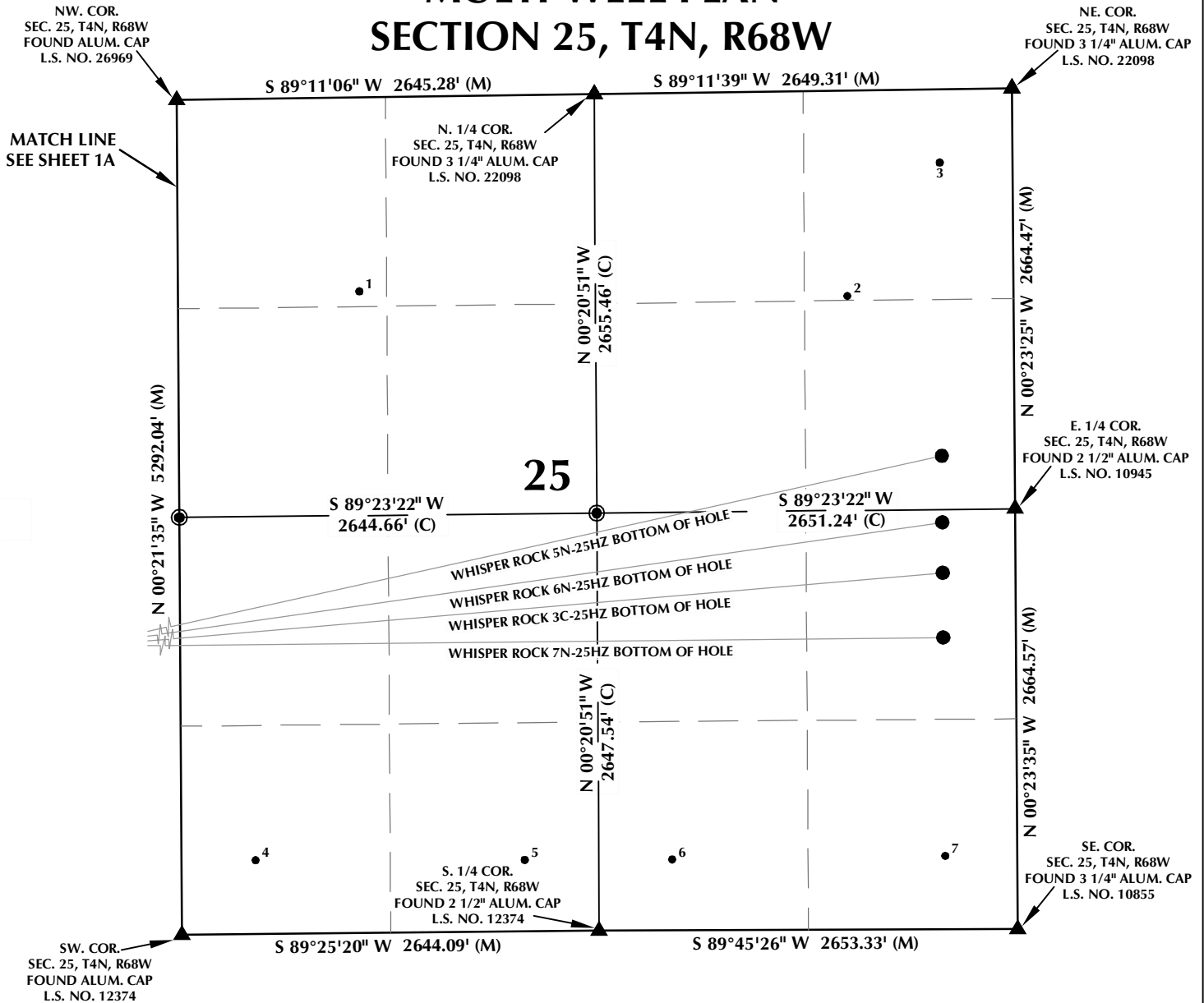
SHERIDAN OFFICE  
2155 North Main Street  
Sheridan, Wyoming 82801  
Phone 307-674-0609

LOVELAND OFFICE  
1635 Foxtrail Drive, Suite 204  
Loveland, Colorado 80538  
Phone 970-776-4331

DRAFTED BY:	LMO	CHECKED BY:	BJR	SHEET NO:
DATE DRAFTED:	5/1/14	DATE SURVEYED:	4/23/14	<b>1B</b>
REVISED:	12/17/14	FILE NAME:	14-19	1B OF 2

# MULTI-WELL PLAN

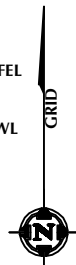
## SECTION 25, T4N, R68W



### WELL NOTES:

WHISPER ROCK 5N-25HZ  
SURFACE: 1926' FSL & 205' FEL  
BOTTOM HOLE: 2322' FNL & 460' FEL  
WILSON RANCH 32N-27HZ  
SURFACE: 1911' FSL, 205' FEL  
BOTTOM HOLE: 2410' FNL, 461' FWL  
WHISPER ROCK 6N-25HZ  
SURFACE: 1896' FSL & 205' FEL  
BOTTOM HOLE: 2580' FSL & 460' FEL  
WILSON RANCH 12C-27HZ  
SURFACE: 1881' FSL, 205' FEL  
BOTTOM HOLE: 2384' FSL, 460' FWL  
WHISPER ROCK 3C-25HZ  
SURFACE: 1866' FSL & 205' FEL  
BOTTOM HOLE: 2260' FSL & 460' FEL  
WILSON RANCH 12N-27HZ  
SURFACE: 1851' FSL, 205' FEL  
BOTTOM HOLE: 1726' FSL, 459' FWL

WHISPER ROCK 7N-25HZ  
SURFACE: 1836' FSL & 206' FEL  
BOTTOM HOLE: 1850' FSL & 460' FEL  
WILSON RANCH 33N-27HZ  
SURFACE: 1821' FSL, 206' FEL  
BOTTOM HOLE: 1500' FSL, 460' FWL



SCALE: 1" = 1000'

### NOTES:

1. ▲ INDICATES FOUND SECTION CORNER
2. ● INDICATES CALCULATED CORNER
3. BASIS OF BEARING DERIVED FROM COLORADO COORDINATE SYSTEM 1983 NORTH ZONE UNLESS OTHERWISE NOTED.
4. ALL MEASURED DISTANCES ARE GRID.
5. COMBINED SCALE FACTOR: .99971841
6. WELL FOOTAGES ARE MEASURED AT RIGHT ANGLES TO THE SECTION LINES.

### WELL PAD - WILSON RANCH 12N-27HZ

MULTI-WELL PLAN  
WHISPER ROCK 5N-25HZ, WILSON RANCH 32N-27HZ,  
WHISPER ROCK 6N-25HZ, WILSON RANCH 12C-27HZ,  
WHISPER ROCK 3C-25HZ, WILSON RANCH 12N-27HZ,  
WHISPER ROCK 7N-25HZ & WILSON RANCH 33N-27HZ  
LOCATED IN SECTIONS 25, 26 & 27  
T4N, R68W, 6TH P.M.  
WELD COUNTY, COLORADO

**Kerr-McGee Oil &  
Gas Onshore L.P.**  
1099 18th Street  
Denver, Colorado 80202



### CONSULTING, LLC

SHERIDAN OFFICE  
2155 North Main Street  
Sheridan, Wyoming 82801  
Phone 307-674-0609

LOVELAND OFFICE  
1635 Foxtrail Drive, Suite 204  
Loveland, Colorado 80538  
Phone 970-776-4331

DRAFTED BY:	LMO	CHECKED BY:	BJR	SHEET NO:
DATE DRAFTED:	5/1/14	DATE SURVEYED:	4/23/14	1C
REVISED:	12/17/14	FILE NAME:	14-19	1C OF 2

# MULTI-WELL PLAN

## SECTION 27, T4N, R68W

NUMBER	WELL NAME	NAD 83	
		LATITUDE	LONGITUDE
1	BDE 13-27	40.283341°	-104.994080°
2	BDE 12-27	40.283343°	-104.994025°
3	BDE 27NW	40.283343°	-104.993972°
4	BDE 22-27	40.283344°	-104.993916°
5	BDE 23-27	40.283343°	-104.993860°

### NOTES:

- \* INDICATES EXISTING WELLS THAT WERE NOT SURVEYED BUT DERIVED FROM COLORADO OIL AND GAS CONSERVATION COMMISSION (COGCC).

**EXISTING WELL EXHIBIT**  
**SECTIONS 26 & 27, T4N, R68W, 6TH P.M.**  
**WELD COUNTY, COLORADO**

**Kerr-McGee Oil &  
Gas Onshore L.P.**  
**1099 18th Street**  
**Denver, Colorado 80202**



### CONSULTING, LLC

**SHERIDAN OFFICE**  
2155 North Main Street  
Sheridan, Wyoming 82801  
Phone 307-674-0609

**LOVELAND OFFICE**  
1635 Foxtrail Drive, Suite 204  
Loveland, Colorado 80538  
Phone 970-776-4331

DRAFTED BY:	LMO	CHECKED BY:	BJR	<b>2A</b> 2A OF 2
DATE DRAFTED:	9/18/14	DATE SURVEYED:	4/23/14	
REVISED:		FILE NAME:	14-19	

# MULTI-WELL PLAN SECTION 25, T4N, R68W

NUMBER	WELL NAME	NAD 83	
		LATITUDE	LONGITUDE
1	WILSON RANCH USX S 25-19	40.288559°	-104.956600°
2	BUJALSKI USX S 25-17	40.288426°	-104.945517°
3	BUJALSKI 41-25	40.290738°	-104.943397°
4	WILSON 14-25	40.278671°	-104.959035°
5	WILSON 24-25	40.278650°	-104.952922°
6	VRANJES 34-25	40.278644°	-104.949574°
7	VRANJES 44-25	40.278674°	-104.943367°

## NOTES:

- \* INDICATES EXISTING WELLS THAT WERE NOT SURVEYED BUT DERIVED FROM COLORADO OIL AND GAS CONSERVATION COMMISSION (COGCC).

**EXISTING WELL EXHIBIT  
SECTION 25, T4N, R68W, 6TH P.M.  
WELD COUNTY, COLORADO**

**Kerr-McGee Oil &  
Gas Onshore L.P.  
1099 18th Street  
Denver, Colorado 80202**



## CONSULTING, LLC

**SHERIDAN OFFICE**  
2155 North Main Street  
Sheridan, Wyoming 82801  
Phone 307-674-0609

**LOVELAND OFFICE**  
1635 Foxtrail Drive, Suite 204  
Loveland, Colorado 80538  
Phone 970-776-4331

DRAFTED BY:	LMO	CHECKED BY:	BJR	<b>SHEET NO: 2B</b> 2B OF 2
DATE DRAFTED:	9/18/14	DATE SURVEYED:	4/23/14	
REVISED:		FILE NAME:	14-19	