

02 January 2015

Colorado Oil and Gas Conservation
Commission
The Chancery Building
1120 Lincoln Street, Suite 801
Denver, CO 80203



410 17th Street, Suite 1400
Denver, CO 80202
(720) 440-6100 phone
(720) 305-0804 fax

Bonanzacrk.com

Attn: Matthew Lepore, Director

Re: Notice of 318A.a.(4).D Well Proposal
Pronghorn O24-15-10XRLNB
SHL: SESW (270' FSL, 1417' FWL) Sec 15-5N-61W, 6TH PM
Top of Production: SESW (631' FSL, 2220' FWL) Sec 15-5N-61W, 6TH PM
Bottom of Production: NENW (470' FNL, 2240' FWL) Sec 10-5N-61W, 6TH PM
Weld County, Colorado

Mr. Director:

Bonanza Creek Energy Operating Company, LLC. (Bonanza) intends to permit, drill and operate the referenced Niobrara Horizontal Well. As defined by Colorado Oil and Gas Conservation Commission (COGCC) Rule 318A.a.(4)D., Bonanza proposes the following wellbore spacing unit:

E/2W/2 Section 15-T5N-R61W & W/2SE/4 Section 15-5N-61W, & E/2W/2 Section 10-5N-61W, 6TH PM, Weld County, CO – 400 Acres

Bonanza is the sole mineral lease holder in the proposed spacing unit, and no mineral owner notifications were required.

Bonanza respectfully requests that you review the enclosed wellbore spacing unit documentation and approve the referenced APD.

Please do not hesitate to call or email me, directly, at (720) 440-6112 or KCaplan@BonanzaCRK.com, should you have any questions pertaining to this matter.

Thank you for your cooperation.

Sincerely,

BONANZA CREEK ENERGY OPERATING COMPANY, LLC.

A handwritten signature in blue ink that reads 'Keith S. Caplan'.

Keith S. Caplan
Sr. Regulatory Specialist

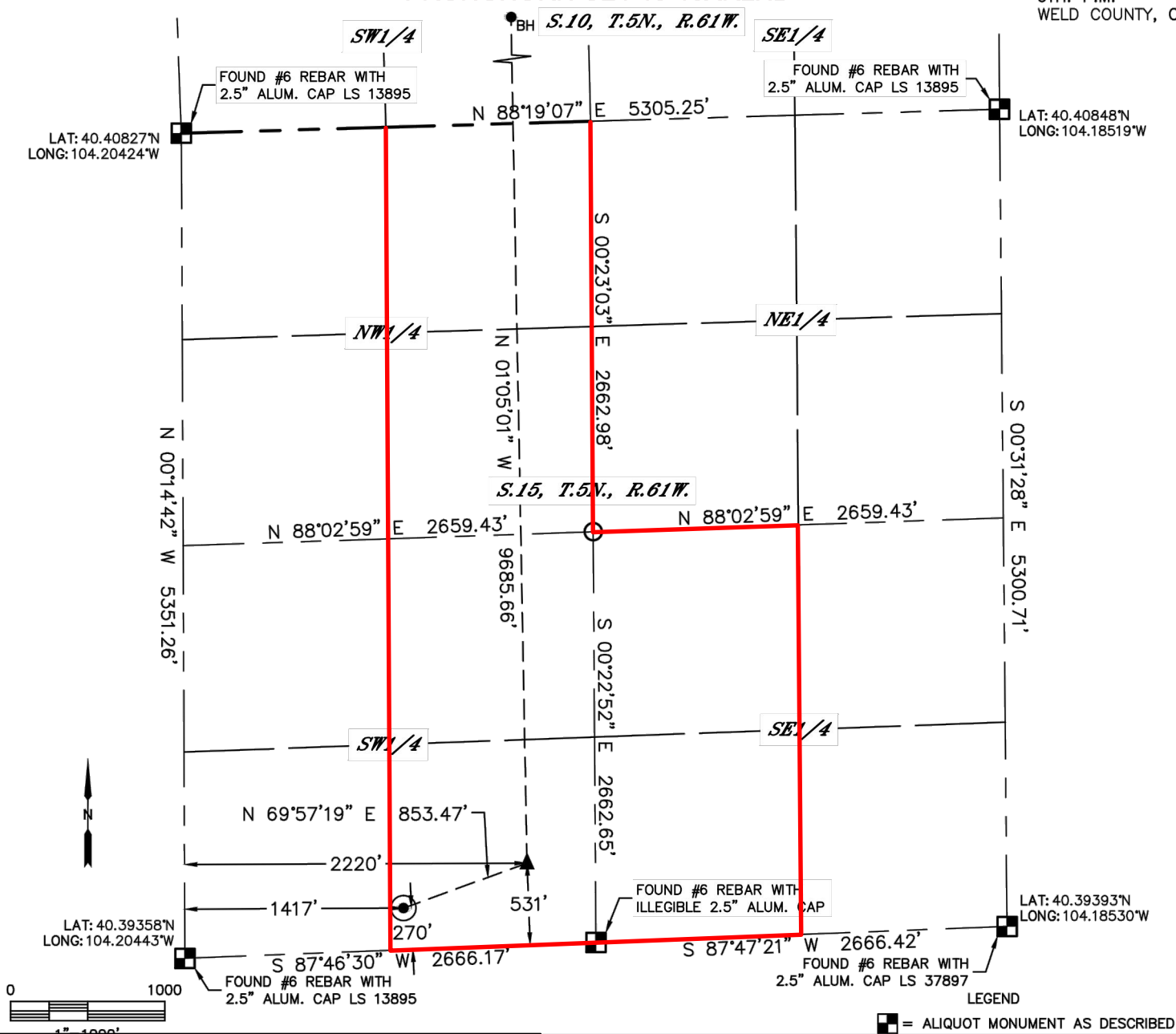


Lat40°, Inc. 6250 W. 10th Street, Unit 2, Greeley, CO 970-515-5294

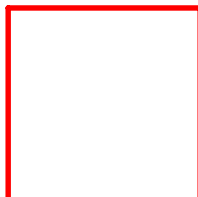
WELL LOCATION CERTIFICATE

PRONGHORN O24-15-10XRLNB

SECTION: 15
TOWNSHIP: 5N
RANGE: 61W
6TH. P.M.
WELD COUNTY, CO



**BONANZA
CREEK**



Wellbore Spacing Unit Outline



Wellbore Spacing Unit Map

29 December 2014 ksc

Pronghorn O24-15-10XRLNB p1
E/2W/2 Sec 15-T5N-R61W 6th PM
W/2SE/4 Sec 15-T5N-R61W 6th PM
E/2W/2 Sec 10-T5N-R61W 6th PM
Weld County, Colorado

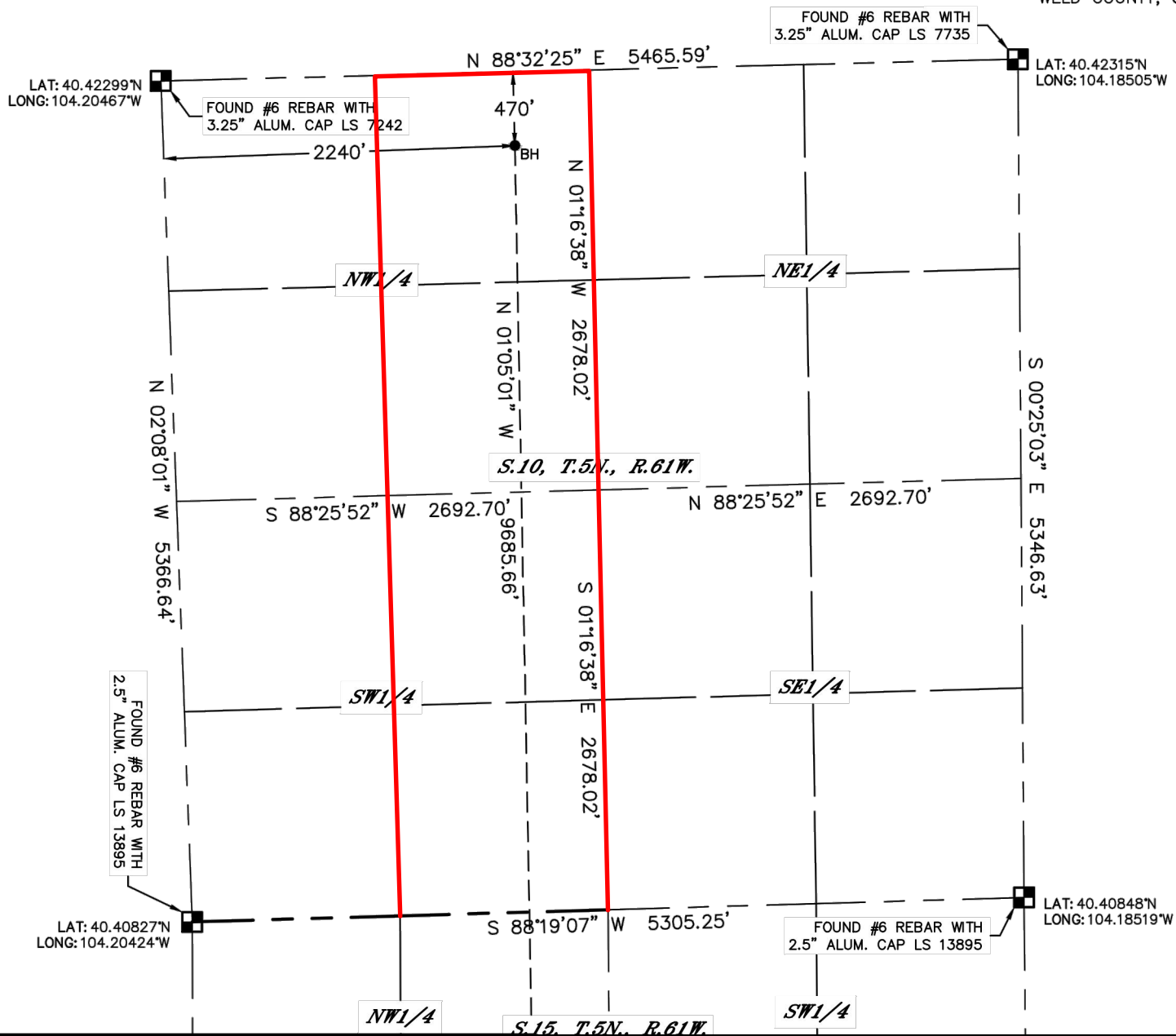


Lat40°, Inc. 6250 W. 10th Street, Unit 2, Greeley, CO 970-515-5294

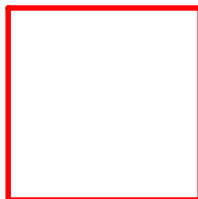
WELL LOCATION CERTIFICATE

PRONGHORN O24-15-10XRLNB

SECTION: 15
TOWNSHIP: 5N
RANGE: 61W
6TH. P.M.
WELD COUNTY, CO



**BONANZA
CREEK**



Wellbore Spacing Unit Outline



Wellbore Spacing Unit Map

29 December 2014 ksc

Pronghorn O24-15-10XRLNB p2
E/2W/2 Sec 15-T5N-R61W 6th PM
W/2SE/4 Sec 15-T5N-R61W 6th PM
E/2W/2 Sec 10-T5N-R61W 6th PM
Weld County, Colorado