



Kerr-McGee Oil & Gas Onshore LP

A subsidiary of Anadarko Petroleum Corporation

1099 18th Street
Denver, CO 80202
720-929-6000

January 26, 2015

Matt Lepore
Director, Colorado Oil and Gas Conservation Commission
Department of Natural Resources
The Chancery Building
1120 Lincoln Street, Suite 801
Denver, CO 80203

Re: **30 Day Certification Letter - 318A.e**
ENGLISH FARMS 34N-9HZ (Doc #400744707)
Township 1 North, Range 65 West
Section 8: NENE
Unit Acreage: 320
Unit Spacing: 01N-65W-Sec 08 E2E2
01N-65W-Sec 09 W2W2
Weld County, Colorado

Dear Director Lepore:

Kerr-McGee Oil and Gas Onshore LP (“KMG”) hereby certifies that a thirty (30) day notice has been given by certified mail to all mineral owners in the proposed wellbore spacing unit. We have not received any objections to such well location, proposed spacing unit, or additional producing formation. KMG hereby respectfully requests approval of this boundary well.

If you have any questions or issues regarding this permit, please contact Cheryl Light at (720) 929-6461.

Very truly yours,

Kerr-McGee Oil and Gas Onshore LP

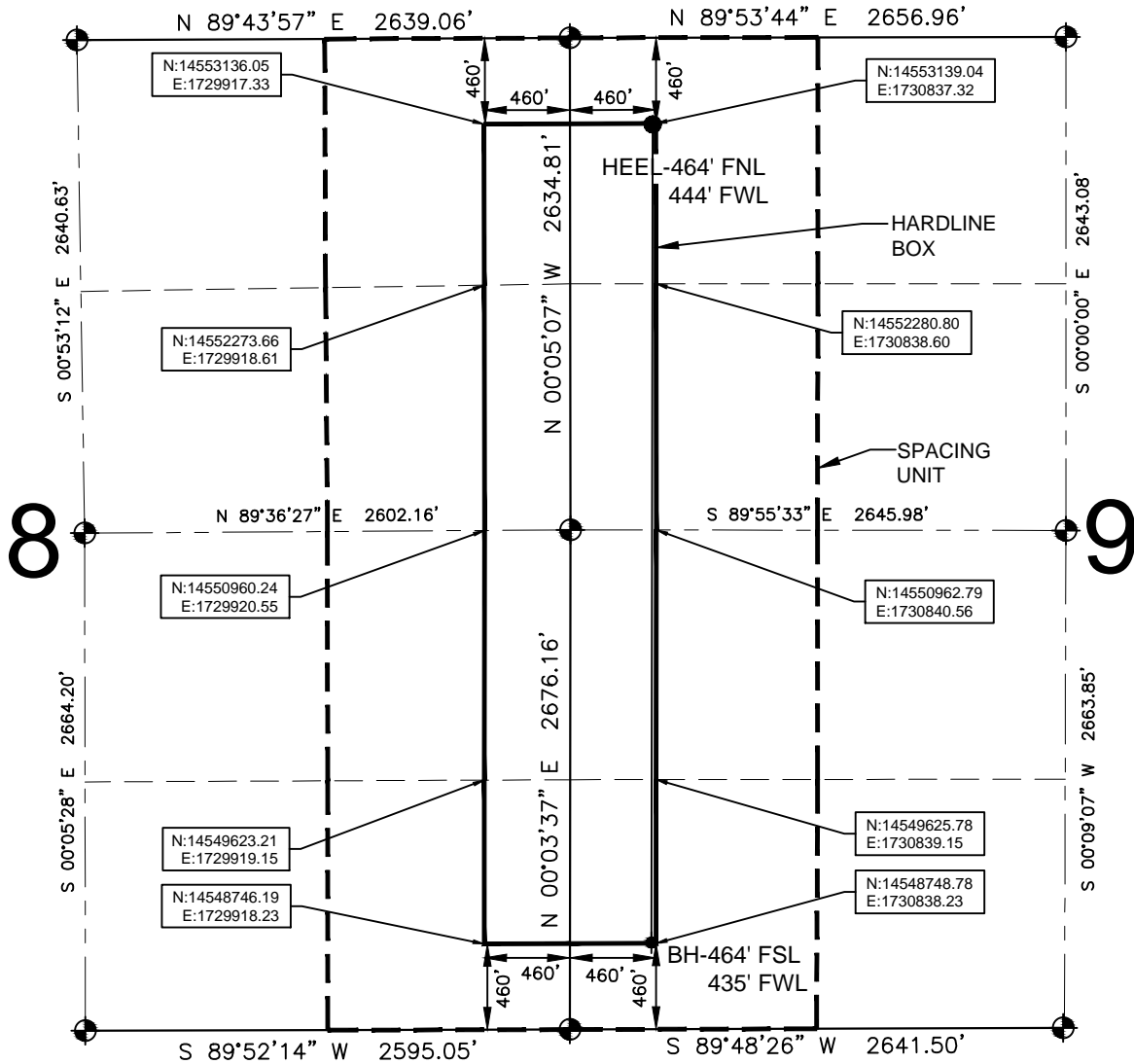
A handwritten signature in black ink, appearing to read "Mike McConaughey".

Mike McConaughey
Sr. Regulatory Analyst

Enclosure

HARDLINE EXHIBIT: ENGLISH FARMS 34N-9HZ

SECTION 9, TOWNSHIP 1 NORTH, RANGE 65 WEST, 6TH P.M.



LEGEND

- ⊙ = EXISTING MONUMENT
- ⊙ = PROPOSED HEEL
- = CALCULATED POSITION
- ⊙ = BOTTOM HOLE
- BH = BOTTOM HOLE

HEEL LOCATION

UTM 13
 LATITUDE= 40.072053°
 LONGITUDE= 104.676845°
 LATITUDE= 40°04'19.389"
 LONGITUDE= 104°40'36.643"

QRT/QRT SECTIONS WITHIN PATH OF THE HARDLINE

- NENE, SEC. 8
- SENE, SEC. 8
- NESE, SEC. 8
- SESE, SEC. 8
- NWNW, SEC. 9
- SWNW, SEC. 9
- NWSW, SEC. 9
- SWSW, SEC. 9

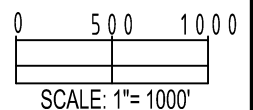
BOTTOM HOLE LOCATION

NAD83
 LATITUDE= 40.060017°
 LONGITUDE= 104.676931°
 LATITUDE= 40°03'36.061"
 LONGITUDE= 104°40'36.952"

AVAILABLE FOOTAGE

4390'

NOTES:
 1. THIS DOCUMENT IS NOT A LAND SURVEY PLAT OR IMPROVEMENT SURVEY PLAT. THIS DOCUMENT DOES NOT REFLECT A FIELD SURVEY. SECTION BREAKDOWN, MONUMENTATION AND HORIZONTAL POSITIONS SHOWN ARE BASED ON THE HEEL AND BOTTOM HOLE LOCATION PROVIDED BY ANADARKO PETROLEUM CORPORATION



PREPARED BY:

 Petroleum Field Services, LLC
 7535 Hilltop Circle
 Denver, CO 80221

DRAWING DATE: 01-12-15		HEEL LOCATION: NW 1/4 NW 1/4, SEC.9, T1N, R65W, 6TH P.M. WELD COUNTY, COLORADO	
BY: SMF	CHECKED ATK		