



**Scientific
Drilling**

Survey Certification

7327 West Barton Road
Casper, WY 82604
(307)-472-6621 Fax (307) 472-5439

Operator	KP Kauffman Co, Inc.
Well Name & No.	Premium Turkey Farms C #2
County & State	Weld County, CO
SDI Job No.	411214K237131
Rig	KPK
Survey Date	22-Dec-2014

I, Steven F. Gottschalk, having personal knowledge of all the facts, hereby certify that the attached directional survey run from a measured depth of 0 feet to a measured depth of 4551.87 feet is true and correct as determined from all available records.


Signature

30-Jan-2015

Date

Steven F. Gottschalk
Rockies Region Well Planner
Scientific Drilling - Rocky Mountain District

KP Kauffman Co, Inc.

Weld County, CO

Premium Turkey Farms

Premium Turkey Farms C #2

OH

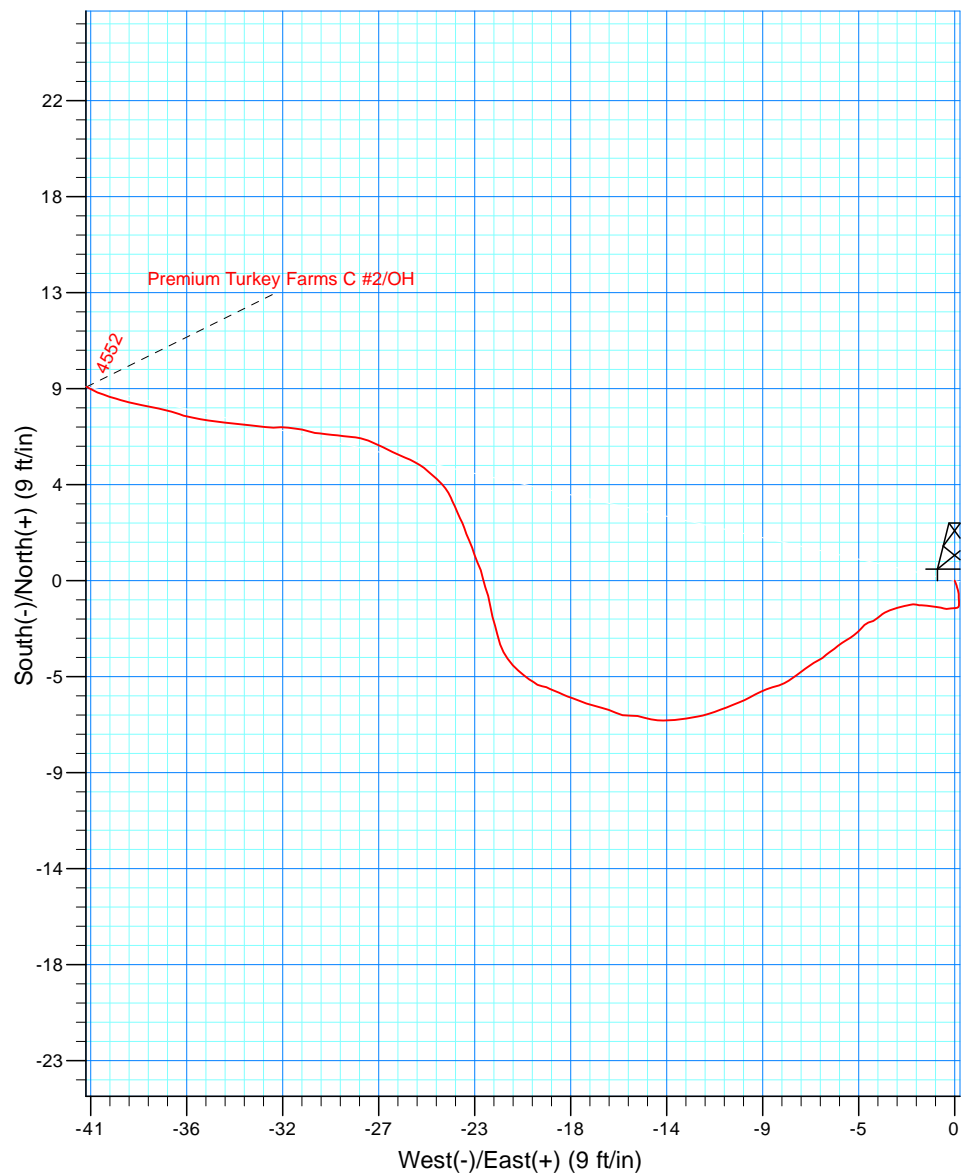
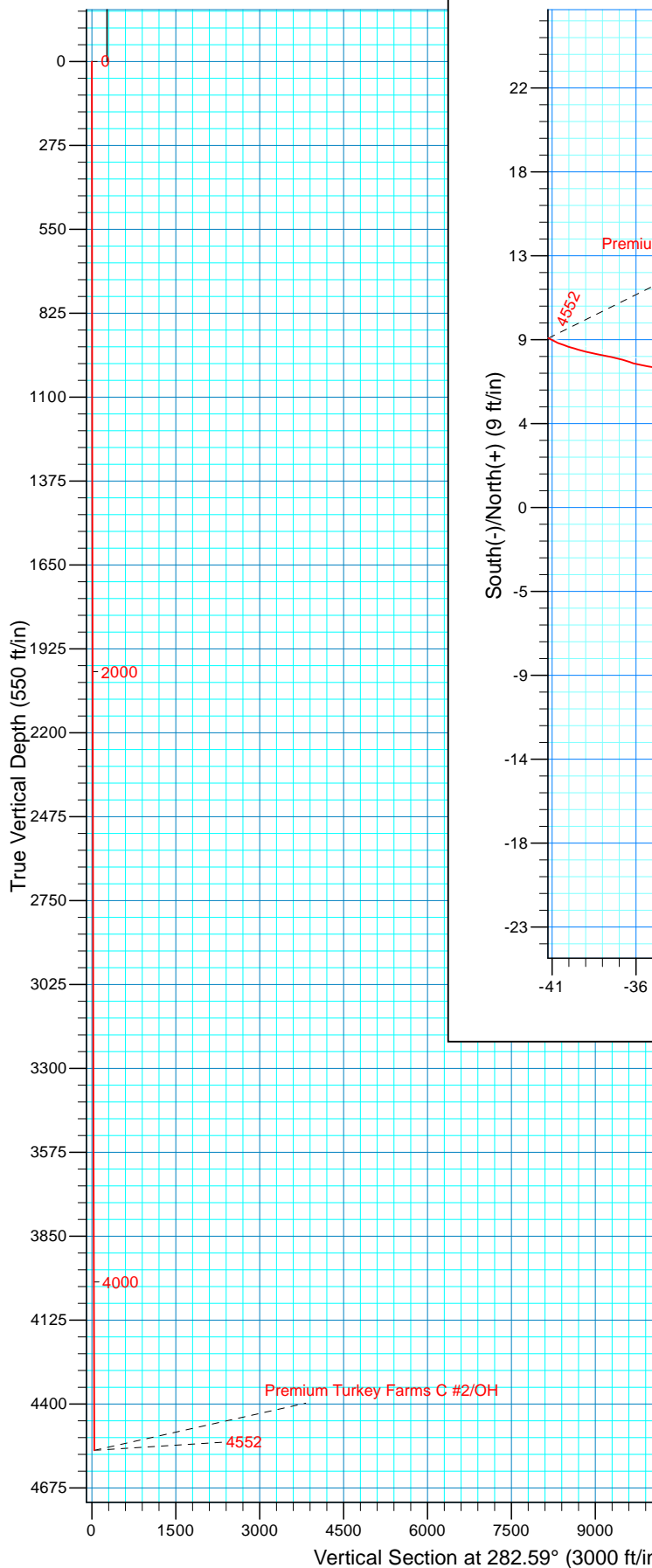
Design: OH

Standard Survey Report

30 January, 2015



Project: Weld County, CO
Site: Premium Turkey Farms
Well: Premium Turkey Farms C #2
Wellbore: OH
Design: OH



WELL DETAILS: Premium Turkey Farms C #2

Ground Level:	5019.00		
Northing	Easting	Latitude	Longitude
1289180.77	3176249.15	40° 7' 31.710 N	104° 52' 10.988 W

Co-ordinate (N/E) Reference: Well Premium Turkey Farms C #2, True North
Vertical (TVD) Reference: GL 5019' & KB 11' @ 5030.00ft (KPK)
Section (VS) Reference: Slot - (0.00N, 0.00E)
Measured Depth Reference: GL 5019' & KB 11' @ 5030.00ft (KPK)
Calculation Method: Minimum Curvature
Local North: True
Location:

PROJECT DETAILS: Weld County, CO

Design: OH (Premium Turkey Farms C #2/OH)

Geodetic System: US State Plane 1983
Datum: North American Datum 1983
Ellipsoid: GRS 1980
Zone: Colorado Northern Zone

Created By: Steve Gottschalk
16:43, January 30 2015

Company:	KP Kauffman Co, Inc.	Local Co-ordinate Reference:	Well Premium Turkey Farms C #2
Project:	Weld County, CO	TVD Reference:	GL 5019' & KB 11' @ 5030.00ft (KPK)
Site:	Premium Turkey Farms	MD Reference:	GL 5019' & KB 11' @ 5030.00ft (KPK)
Well:	Premium Turkey Farms C #2	North Reference:	True
Wellbore:	OH	Survey Calculation Method:	Minimum Curvature
Design:	OH	Database:	Casper District

Project	Weld County, CO		
Map System:	US State Plane 1983	System Datum:	Mean Sea Level
Geo Datum:	North American Datum 1983		
Map Zone:	Colorado Northern Zone		

Site	Premium Turkey Farms				
Site Position:		Northing:	1,290,087.75 usft	Latitude:	40° 7' 40.768 N
From:	Lat/Long	Easting:	3,174,895.68 usft	Longitude:	104° 52' 28.330 W
Position Uncertainty:	0.00 ft	Slot Radius:	13.200 in	Grid Convergence:	0.40 °

Well	Premium Turkey Farms C #2, 1980' FNL 660' FEL SEC22 T2N R67W					
Well Position	+N/-S	0.00 ft	Northing:	1,289,180.77 usft	Latitude:	40° 7' 31.710 N
	+E/-W	0.00 ft	Easting:	3,176,249.15 usft	Longitude:	104° 52' 10.988 W
Position Uncertainty		0.00 ft	Wellhead Elevation:	0.00 ft	Ground Level:	5,019.00 ft

Wellbore	OH				
Magnetics	Model Name	Sample Date	Declination (°)	Dip Angle (°)	Field Strength (nT)
	BGGM2014	12/22/2014	8.53	66.68	52,491

Design	OH				
Audit Notes:					
Version:	1.0	Phase:	ACTUAL	Tie On Depth:	0.00
Vertical Section:	Depth From (TVD) (ft)	+N/-S (ft)	+E/-W (ft)	Direction (°)	
	0.00	0.00	0.00	282.59	

Survey Program	Date				
From (ft)	To (ft)	Survey (Wellbore)	Tool Name	Description	
88.86	4,551.87	Survey #1 - Surface Gyros (OH)	SDI Standard Keeper 103	SDI Standard Wireline Keeper ver 1.0.3	

Survey									
Measured Depth (ft)	Inclination (°)	Azimuth (°)	Vertical Depth (ft)	+N/-S (ft)	+E/-W (ft)	Vertical Section (ft)	Dogleg Rate (°/100ft)	Build Rate (°/100ft)	Turn Rate (°/100ft)
0.00	0.00	0.00	0.00	0.00	0.00	0.00	0.00	0.00	0.00
88.86	0.32	160.52	88.86	-0.23	0.08	-0.13	0.36	0.36	0.00
First SDI Gyro Survey									
101.25	0.35	159.61	101.25	-0.30	0.11	-0.17	0.25	0.24	-7.34
125.69	0.36	165.74	125.69	-0.45	0.15	-0.25	0.16	0.04	25.08
151.11	0.45	174.00	151.11	-0.62	0.18	-0.31	0.42	0.35	32.49
177.60	0.35	185.71	177.60	-0.81	0.19	-0.36	0.49	-0.38	44.21
200.77	0.58	170.09	200.77	-0.99	0.20	-0.41	1.12	0.99	-67.41
227.44	0.27	194.80	227.44	-1.19	0.21	-0.46	1.32	-1.16	92.65
251.98	0.21	256.33	251.98	-1.25	0.15	-0.42	1.02	-0.24	250.73
275.50	0.29	256.09	275.50	-1.28	0.05	-0.32	0.34	0.34	-1.02

Company:	KP Kauffman Co, Inc.	Local Co-ordinate Reference:	Well Premium Turkey Farms C #2
Project:	Weld County, CO	TVD Reference:	GL 5019' & KB 11' @ 5030.00ft (KPK)
Site:	Premium Turkey Farms	MD Reference:	GL 5019' & KB 11' @ 5030.00ft (KPK)
Well:	Premium Turkey Farms C #2	North Reference:	True
Wellbore:	OH	Survey Calculation Method:	Minimum Curvature
Design:	OH	Database:	Casper District

Survey									
Measured Depth (ft)	Inclination (°)	Azimuth (°)	Vertical Depth (ft)	+N/-S (ft)	+E/-W (ft)	Vertical Section (ft)	Dogleg Rate (°/100ft)	Build Rate (°/100ft)	Turn Rate (°/100ft)
302.14	0.35	265.98	302.14	-1.30	-0.10	-0.19	0.31	0.23	37.12
325.14	0.35	263.19	325.13	-1.31	-0.24	-0.05	0.07	0.00	-12.13
351.09	0.28	266.48	351.08	-1.33	-0.38	0.08	0.28	-0.27	12.68
376.94	0.30	286.04	376.93	-1.31	-0.51	0.21	0.39	0.08	75.67
400.10	0.38	287.23	400.09	-1.27	-0.64	0.35	0.35	0.35	5.14
426.05	0.37	277.99	426.04	-1.23	-0.81	0.52	0.24	-0.04	-35.61
452.04	0.36	273.27	452.03	-1.22	-0.97	0.68	0.12	-0.04	-18.16
477.71	0.29	271.54	477.70	-1.21	-1.12	0.82	0.28	-0.27	-6.74
501.04	0.34	289.55	501.03	-1.19	-1.24	0.95	0.47	0.21	77.20
527.00	0.36	272.86	526.99	-1.16	-1.39	1.11	0.40	0.08	-64.29
552.61	0.33	269.30	552.60	-1.15	-1.55	1.26	0.14	-0.12	-13.90
575.64	0.26	271.10	575.63	-1.15	-1.67	1.38	0.31	-0.30	7.82
601.45	0.33	286.65	601.44	-1.13	-1.80	1.51	0.41	0.27	60.25
627.26	0.36	266.88	627.25	-1.11	-1.95	1.66	0.47	0.12	-76.60
650.45	0.30	253.98	650.44	-1.14	-2.08	1.78	0.41	-0.26	-55.63
676.15	0.34	264.03	676.14	-1.16	-2.22	1.91	0.27	0.16	39.11
702.20	0.43	258.05	702.19	-1.19	-2.39	2.08	0.38	0.35	-22.96
725.18	0.43	245.03	725.17	-1.24	-2.56	2.22	0.42	0.00	-56.66
751.09	0.32	270.78	751.08	-1.28	-2.72	2.37	0.77	-0.42	99.38
777.05	0.61	241.95	777.04	-1.35	-2.91	2.55	1.40	1.12	-111.06
800.15	0.45	255.21	800.14	-1.43	-3.11	2.72	0.87	-0.69	57.40
826.29	0.36	238.90	826.27	-1.50	-3.28	2.87	0.56	-0.34	-62.39
852.10	0.54	232.97	852.08	-1.61	-3.44	3.01	0.72	0.70	-22.98
875.32	0.58	227.75	875.30	-1.76	-3.62	3.15	0.28	0.17	-22.48
901.34	0.51	247.57	901.32	-1.89	-3.82	3.32	0.77	-0.27	76.17
927.37	0.55	254.57	927.35	-1.97	-4.05	3.52	0.29	0.15	26.89
950.65	0.56	223.13	950.63	-2.08	-4.23	3.68	1.29	0.04	-135.05
977.15	0.49	220.06	977.13	-2.26	-4.40	3.80	0.28	-0.26	-11.58
1,000.39	0.56	231.43	1,000.37	-2.41	-4.55	3.91	0.54	0.30	48.92
1,026.51	0.48	228.59	1,026.49	-2.56	-4.73	4.06	0.32	-0.31	-10.87
1,050.28	0.47	241.95	1,050.26	-2.67	-4.89	4.19	0.47	-0.04	56.21
1,076.72	0.50	235.03	1,076.69	-2.79	-5.08	4.35	0.25	0.11	-26.17
1,103.08	0.50	237.55	1,103.05	-2.92	-5.27	4.51	0.08	0.00	9.56
1,127.01	0.62	232.91	1,126.98	-3.05	-5.46	4.67	0.54	0.50	-19.39
1,150.44	0.51	225.39	1,150.41	-3.20	-5.64	4.81	0.57	-0.47	-32.10
1,176.52	0.60	242.68	1,176.49	-3.35	-5.84	4.97	0.73	0.35	66.30
1,200.48	0.49	223.62	1,200.45	-3.48	-6.03	5.12	0.88	-0.46	-79.55
1,226.73	0.49	236.40	1,226.70	-3.62	-6.20	5.26	0.42	0.00	48.69
1,250.14	0.65	241.34	1,250.11	-3.74	-6.40	5.43	0.71	0.68	21.10
1,276.56	0.63	238.85	1,276.53	-3.89	-6.65	5.65	0.13	-0.08	-9.42
1,302.79	0.67	233.18	1,302.75	-4.05	-6.90	5.85	0.29	0.15	-21.62
1,325.96	0.51	233.83	1,325.92	-4.20	-7.09	6.01	0.69	-0.69	2.81
1,351.91	0.63	233.60	1,351.87	-4.35	-7.30	6.17	0.46	0.46	-0.89

Company:	KP Kauffman Co, Inc.	Local Co-ordinate Reference:	Well Premium Turkey Farms C #2
Project:	Weld County, CO	TVD Reference:	GL 5019' & KB 11' @ 5030.00ft (KPK)
Site:	Premium Turkey Farms	MD Reference:	GL 5019' & KB 11' @ 5030.00ft (KPK)
Well:	Premium Turkey Farms C #2	North Reference:	True
Wellbore:	OH	Survey Calculation Method:	Minimum Curvature
Design:	OH	Database:	Casper District

Survey									
Measured Depth (ft)	Inclination (°)	Azimuth (°)	Vertical Depth (ft)	+N/-S (ft)	+E/-W (ft)	Vertical Section (ft)	Dogleg Rate (°/100ft)	Build Rate (°/100ft)	Turn Rate (°/100ft)
1,375.44	0.59	233.05	1,375.40	-4.50	-7.50	6.34	0.17	-0.17	-2.34
1,401.57	0.66	236.64	1,401.53	-4.66	-7.73	6.53	0.31	0.27	13.74
1,427.48	0.63	242.74	1,427.44	-4.81	-7.98	6.74	0.29	-0.12	23.54
1,450.61	0.74	251.46	1,450.56	-4.91	-8.24	6.97	0.65	0.48	37.70
1,476.62	0.64	257.11	1,476.57	-5.00	-8.54	7.24	0.46	-0.38	21.72
1,502.68	0.70	244.81	1,502.63	-5.10	-8.83	7.50	0.60	0.23	-47.20
1,526.05	0.66	249.36	1,526.00	-5.21	-9.08	7.73	0.29	-0.17	19.47
1,550.44	0.71	239.84	1,550.39	-5.33	-9.34	7.95	0.51	0.21	-39.03
1,578.04	0.61	245.83	1,577.99	-5.48	-9.62	8.20	0.44	-0.36	21.70
1,601.21	0.71	240.72	1,601.15	-5.60	-9.86	8.40	0.50	0.43	-22.05
1,625.22	0.69	251.14	1,625.16	-5.72	-10.13	8.64	0.54	-0.08	43.40
1,652.21	0.67	245.24	1,652.15	-5.84	-10.43	8.90	0.27	-0.07	-21.86
1,676.37	0.71	249.61	1,676.31	-5.95	-10.69	9.14	0.27	0.17	18.09
1,700.52	0.56	248.25	1,700.46	-6.05	-10.94	9.36	0.62	-0.62	-5.63
1,727.70	0.76	253.08	1,727.64	-6.15	-11.24	9.63	0.76	0.74	17.77
1,752.10	0.63	252.22	1,752.03	-6.24	-11.52	9.89	0.53	-0.53	-3.52
1,776.26	0.75	252.96	1,776.19	-6.32	-11.80	10.14	0.50	0.50	3.06
1,800.43	0.71	262.92	1,800.36	-6.39	-12.10	10.42	0.55	-0.17	41.21
1,827.87	0.67	257.25	1,827.80	-6.44	-12.43	10.72	0.29	-0.15	-20.66
1,852.17	0.64	267.26	1,852.10	-6.48	-12.70	10.98	0.49	-0.12	41.19
1,875.95	0.69	263.47	1,875.88	-6.50	-12.97	11.24	0.28	0.21	-15.94
1,900.18	0.76	259.78	1,900.10	-6.55	-13.28	11.53	0.35	0.29	-15.23
1,927.71	0.70	274.97	1,927.63	-6.57	-13.62	11.87	0.73	-0.22	55.18
1,951.98	0.71	272.50	1,951.90	-6.55	-13.92	12.16	0.13	0.04	-10.18
1,976.81	0.76	285.00	1,976.73	-6.50	-14.24	12.48	0.67	0.20	50.34
2,001.40	0.72	280.93	2,001.32	-6.43	-14.54	12.79	0.27	-0.16	-16.55
2,025.91	0.79	285.76	2,025.82	-6.35	-14.86	13.12	0.39	0.29	19.71
2,050.24	0.83	261.10	2,050.15	-6.33	-15.19	13.45	1.43	0.16	-101.36
2,077.70	0.78	286.16	2,077.61	-6.31	-15.57	13.82	1.28	-0.18	91.26
2,102.25	0.82	295.00	2,102.16	-6.19	-15.89	14.16	0.53	0.16	36.01
2,126.69	0.81	288.89	2,126.59	-6.06	-16.21	14.50	0.36	-0.04	-25.00
2,151.02	0.82	283.93	2,150.92	-5.96	-16.54	14.85	0.29	0.04	-20.39
2,175.17	0.80	287.57	2,175.07	-5.87	-16.87	15.19	0.23	-0.08	15.07
2,202.24	0.92	284.80	2,202.14	-5.76	-17.26	15.59	0.47	0.44	-10.23
2,225.84	0.83	294.04	2,225.73	-5.64	-17.60	15.95	0.71	-0.38	39.15
2,253.56	0.57	288.82	2,253.45	-5.52	-17.91	16.28	0.96	-0.94	-18.83
2,277.18	0.62	290.38	2,277.07	-5.43	-18.15	16.53	0.22	0.21	6.60
2,301.33	0.50	296.87	2,301.22	-5.34	-18.36	16.76	0.56	-0.50	26.87
2,325.39	0.50	292.79	2,325.28	-5.25	-18.55	16.96	0.15	0.00	-16.96
2,352.79	0.59	293.90	2,352.68	-5.15	-18.79	17.22	0.33	0.33	4.05
2,376.86	0.36	287.46	2,376.74	-5.08	-18.98	17.41	0.98	-0.96	-26.76
2,400.91	0.50	300.03	2,400.79	-5.00	-19.14	17.59	0.70	0.58	52.27
2,425.34	0.51	266.18	2,425.22	-4.95	-19.34	17.80	1.20	0.04	-138.56

Company:	KP Kauffman Co, Inc.	Local Co-ordinate Reference:	Well Premium Turkey Farms C #2
Project:	Weld County, CO	TVD Reference:	GL 5019' & KB 11' @ 5030.00ft (KPK)
Site:	Premium Turkey Farms	MD Reference:	GL 5019' & KB 11' @ 5030.00ft (KPK)
Well:	Premium Turkey Farms C #2	North Reference:	True
Wellbore:	OH	Survey Calculation Method:	Minimum Curvature
Design:	OH	Database:	Casper District

Survey										
Measured Depth (ft)	Inclination (°)	Azimuth (°)	Vertical Depth (ft)	+N/-S (ft)	+E/-W (ft)	Vertical Section (ft)	Dogleg Rate (°/100ft)	Build Rate (°/100ft)	Turn Rate (°/100ft)	
2,452.39	0.56	309.65	2,452.27	-4.88	-19.56	18.03	1.47	0.18	160.70	
2,476.37	0.48	298.12	2,476.25	-4.76	-19.74	18.23	0.55	-0.33	-48.08	
2,500.51	0.67	305.26	2,500.39	-4.63	-19.95	18.46	0.84	0.79	29.58	
2,527.53	0.78	308.76	2,527.41	-4.42	-20.22	18.77	0.44	0.41	12.95	
2,551.02	0.78	311.60	2,550.90	-4.21	-20.46	19.05	0.16	0.00	12.09	
2,575.06	0.86	315.87	2,574.93	-3.98	-20.71	19.35	0.42	0.33	17.76	
2,602.15	0.86	327.14	2,602.02	-3.66	-20.96	19.66	0.62	0.00	41.60	
2,626.19	0.86	328.80	2,626.06	-3.35	-21.15	19.91	0.10	0.00	6.91	
2,650.23	1.02	343.05	2,650.09	-2.99	-21.31	20.15	1.17	0.67	59.28	
2,677.40	1.07	345.92	2,677.26	-2.52	-21.44	20.38	0.27	0.18	10.56	
2,701.54	0.92	344.97	2,701.40	-2.11	-21.55	20.57	0.63	-0.62	-3.94	
2,725.60	1.13	342.91	2,725.45	-1.70	-21.67	20.78	0.89	0.87	-8.56	
2,750.20	1.16	353.52	2,750.05	-1.22	-21.77	20.98	0.87	0.12	43.13	
2,777.30	1.02	342.66	2,777.14	-0.72	-21.87	21.19	0.92	-0.52	-40.07	
2,801.41	1.02	340.52	2,801.25	-0.31	-22.00	21.41	0.16	0.00	-8.88	
2,825.72	1.01	350.11	2,825.55	0.11	-22.11	21.61	0.70	-0.04	39.45	
2,850.05	0.84	338.90	2,849.88	0.48	-22.21	21.79	1.02	-0.70	-46.07	
2,876.68	0.95	334.76	2,876.51	0.87	-22.38	22.03	0.48	0.41	-15.55	
2,900.96	0.84	344.96	2,900.79	1.22	-22.51	22.24	0.80	-0.45	42.01	
2,925.43	0.76	338.03	2,925.25	1.54	-22.62	22.41	0.51	-0.33	-28.32	
2,952.67	0.81	336.76	2,952.49	1.89	-22.76	22.63	0.19	0.18	-4.66	
2,976.81	0.73	337.92	2,976.63	2.19	-22.89	22.81	0.34	-0.33	4.81	
3,001.05	0.66	340.97	3,000.87	2.46	-22.99	22.97	0.33	-0.29	12.58	
3,026.12	0.46	337.83	3,025.94	2.69	-23.08	23.11	0.81	-0.80	-12.52	
3,051.60	0.67	331.57	3,051.41	2.92	-23.19	23.26	0.86	0.82	-24.57	
3,076.47	0.71	337.06	3,076.28	3.19	-23.31	23.45	0.31	0.16	22.07	
3,101.17	0.74	337.91	3,100.98	3.48	-23.43	23.63	0.13	0.12	3.44	
3,126.17	0.62	331.14	3,125.98	3.74	-23.56	23.81	0.58	-0.48	-27.08	
3,151.06	0.53	342.10	3,150.87	3.97	-23.66	23.96	0.57	-0.36	44.03	
3,176.09	0.72	324.44	3,175.90	4.21	-23.79	24.13	1.07	0.76	-70.56	
3,201.16	0.65	321.15	3,200.96	4.45	-23.97	24.36	0.32	-0.28	-13.12	
3,226.28	0.46	307.17	3,226.08	4.62	-24.14	24.57	0.92	-0.76	-55.65	
3,251.28	0.56	318.12	3,251.08	4.77	-24.30	24.76	0.56	0.40	43.80	
3,277.38	0.62	310.20	3,277.18	4.96	-24.49	24.98	0.39	0.23	-30.34	
3,302.52	0.59	310.03	3,302.32	5.13	-24.70	25.22	0.12	-0.12	-0.68	
3,326.06	0.59	309.86	3,325.86	5.29	-24.88	25.44	0.01	0.00	-0.72	
3,350.73	0.53	298.52	3,350.53	5.42	-25.08	25.66	0.51	-0.24	-45.97	
3,376.53	0.62	300.97	3,376.33	5.55	-25.30	25.91	0.36	0.35	9.50	
3,401.12	0.54	294.78	3,400.91	5.67	-25.52	26.14	0.41	-0.33	-25.17	
3,426.95	0.63	290.49	3,426.74	5.77	-25.77	26.40	0.39	0.35	-16.61	
3,451.56	0.77	294.90	3,451.35	5.88	-26.04	26.70	0.61	0.57	17.92	
3,477.49	0.76	293.34	3,477.28	6.03	-26.36	27.04	0.09	-0.04	-6.02	
3,502.13	0.67	301.65	3,501.92	6.17	-26.63	27.34	0.56	-0.37	33.73	
3,528.08	0.77	292.39	3,527.86	6.31	-26.92	27.65	0.59	0.39	-35.68	

Company:	KP Kauffman Co, Inc.	Local Co-ordinate Reference:	Well Premium Turkey Farms C #2
Project:	Weld County, CO	TVD Reference:	GL 5019' & KB 11' @ 5030.00ft (KPK)
Site:	Premium Turkey Farms	MD Reference:	GL 5019' & KB 11' @ 5030.00ft (KPK)
Well:	Premium Turkey Farms C #2	North Reference:	True
Wellbore:	OH	Survey Calculation Method:	Minimum Curvature
Design:	OH	Database:	Casper District

Survey									
Measured Depth (ft)	Inclination (°)	Azimuth (°)	Vertical Depth (ft)	+N/-S (ft)	+E/-W (ft)	Vertical Section (ft)	Dogleg Rate (°/100ft)	Build Rate (°/100ft)	Turn Rate (°/100ft)
3,550.01	0.73	296.32	3,549.79	6.43	-27.18	27.93	0.30	-0.18	17.92
3,575.48	0.63	287.98	3,575.26	6.55	-27.46	28.23	0.55	-0.39	-32.74
3,600.94	0.65	291.15	3,600.72	6.64	-27.73	28.51	0.16	0.08	12.45
3,626.46	0.54	276.47	3,626.24	6.71	-27.98	28.77	0.73	-0.43	-57.52
3,651.99	0.52	273.58	3,651.77	6.73	-28.22	29.01	0.13	-0.08	-11.32
3,677.31	0.43	279.36	3,677.09	6.75	-28.43	29.22	0.40	-0.36	22.83
3,700.15	0.67	275.45	3,699.93	6.78	-28.65	29.43	1.06	1.05	-17.12
3,725.69	0.59	277.16	3,725.46	6.81	-28.93	29.71	0.32	-0.31	6.70
3,751.34	0.59	269.77	3,751.11	6.82	-29.19	29.97	0.30	0.00	-28.81
3,777.00	0.66	285.20	3,776.77	6.86	-29.46	30.25	0.71	0.27	60.13
3,803.10	0.62	269.08	3,802.87	6.90	-29.75	30.54	0.70	-0.15	-61.76
3,825.06	0.65	281.50	3,824.83	6.92	-29.99	30.78	0.64	0.14	56.56
3,850.21	0.71	288.89	3,849.98	7.00	-30.28	31.08	0.42	0.24	29.38
3,875.46	0.72	279.39	3,875.22	7.08	-30.58	31.39	0.47	0.04	-37.62
3,900.65	0.76	276.97	3,900.41	7.12	-30.90	31.71	0.20	0.16	-9.61
3,926.00	0.80	279.08	3,925.76	7.17	-31.25	32.06	0.19	0.16	8.32
3,952.20	0.70	264.76	3,951.96	7.19	-31.59	32.39	0.81	-0.38	-54.66
3,977.50	0.87	269.57	3,977.25	7.17	-31.93	32.73	0.72	0.67	19.01
4,002.81	0.91	279.19	4,002.56	7.20	-32.32	33.11	0.61	0.16	38.01
4,025.24	0.99	275.01	4,024.99	7.25	-32.69	33.48	0.47	0.36	-18.64
4,053.21	1.03	274.66	4,052.95	7.29	-33.18	33.97	0.14	0.14	-1.25
4,075.93	1.04	279.60	4,075.67	7.34	-33.59	34.38	0.40	0.04	21.74
4,100.71	1.10	271.66	4,100.45	7.38	-34.05	34.84	0.64	0.24	-32.04
4,126.49	0.97	283.99	4,126.22	7.44	-34.51	35.30	1.00	-0.50	47.83
4,151.48	0.99	271.55	4,151.21	7.50	-34.93	35.72	0.85	0.08	-49.78
4,177.72	0.95	284.72	4,177.44	7.56	-35.37	36.16	0.86	-0.15	50.19
4,200.84	0.91	277.55	4,200.56	7.63	-35.73	36.54	0.53	-0.17	-31.01
4,226.20	1.03	287.34	4,225.92	7.73	-36.15	36.97	0.81	0.47	38.60
4,251.56	1.04	291.35	4,251.27	7.88	-36.58	37.42	0.29	0.04	15.81
4,277.13	0.93	278.49	4,276.84	8.00	-37.00	37.86	0.96	-0.43	-50.29
4,300.32	1.06	284.85	4,300.03	8.08	-37.40	38.26	0.73	0.56	27.43
4,325.20	0.99	277.67	4,324.90	8.17	-37.83	38.70	0.59	-0.28	-28.86
4,350.30	0.93	284.33	4,350.00	8.25	-38.24	39.12	0.50	-0.24	26.53
4,375.40	0.84	282.49	4,375.10	8.34	-38.62	39.51	0.38	-0.36	-7.33
4,401.36	0.78	289.32	4,401.05	8.44	-38.97	39.88	0.44	-0.23	26.31
4,425.12	0.84	282.40	4,424.81	8.53	-39.30	40.21	0.48	0.25	-29.12
4,451.16	0.65	292.14	4,450.85	8.62	-39.62	40.55	0.87	-0.73	37.40
4,476.67	0.69	283.84	4,476.36	8.71	-39.90	40.84	0.41	0.16	-32.54
4,501.00	0.75	295.32	4,500.69	8.82	-40.19	41.14	0.64	0.25	47.18
4,526.10	0.60	300.80	4,525.78	8.95	-40.45	41.43	0.65	-0.60	21.83
4,551.87	0.62	294.03	4,551.55	9.08	-40.69	41.69	0.29	0.08	-26.27
Last SDI Gyro Survey									

Company:	KP Kauffman Co, Inc.	Local Co-ordinate Reference:	Well Premium Turkey Farms C #2
Project:	Weld County, CO	TVD Reference:	GL 5019' & KB 11' @ 5030.00ft (KPK)
Site:	Premium Turkey Farms	MD Reference:	GL 5019' & KB 11' @ 5030.00ft (KPK)
Well:	Premium Turkey Farms C #2	North Reference:	True
Wellbore:	OH	Survey Calculation Method:	Minimum Curvature
Design:	OH	Database:	Casper District

Design Annotations

Measured Depth (ft)	Vertical Depth (ft)	Local Coordinates		Comment
		+N/-S (ft)	+E/-W (ft)	
88.86	88.86	-0.23	0.08	First SDI Gyro Survey
4,551.87	4,551.55	9.08	-40.69	Last SDI Gyro Survey

Checked By: _____ Approved By: _____ Date: _____