



**RADIAL CEMENT BOND
GAMMA RAY
CCL**


Company		KERR McGEE OIL AND GAS		Company		KERR McGEE OIL AND GAS	
Well		I & J 7-6		Well		I & J 7-6	
Field		WATTENBERG		Field		WATTENBERG	
County		WELD		County		WELD	
State		CO		State		CO	
Location:				API # : 05-123-26878			
SHL: 1966' FNL & 2040' FEL SW/NE				Other Services			
SEC 6 TWP 1N RGE 68W							
Permanent Datum		GL		Elevation		4972'	
Log Measured From		KB 14'		Elevation		K.B. 4986' D.F. 4985' G.L. 4972'	
Drilling Measured From		KB		Elevation			
Date		1-22-2015		Date			
Run Number		ONE		Run Number			
Depth Driller		8224'		Depth Driller			
Depth Logger		4073'		Depth Logger			
Bottom Logged Interval		4064'		Bottom Logged Interval			
Top Log Interval		SURFACE		Top Log Interval			
Open Hole Size		7.875		Open Hole Size			
Type Fluid		WATER		Type Fluid			
Density / Viscosity		1.0		Density / Viscosity			
Max. Recorded Temp.		118 DEG F		Max. Recorded Temp.			
Estimated Cement Top		130'		Estimated Cement Top			
Time Well Ready		N/A		Time Well Ready			
Time Logger on Bottom		N/A		Time Logger on Bottom			
Equipment Number		4310		Equipment Number			
Location		GREELEY		Location			
Recorded By		N. BREHMER		Recorded By			
Witnessed By		R. VIERA		Witnessed By			
Borehole Record				Tubing Record			
Run Number		Bit		From		To	
ONE		12.25"		SURFACE		692'	
TWO		7.88"		692'		8224'	
Casing Record		Size		Wgt/Ft		Top	
Surface String		8.63		24#		SURFACE	
Prot. String						Bottom	
Production String		4.5		11.6#		SURFACE	
Liner						8224'	

<<< Fold Here >>>



All interpretations are opinions based on inferences from electrical or other measurements and we cannot and do not guarantee the accuracy or correctness of any interpretation, and we shall not, except in the case of gross or willful negligence on our part, be liable or responsible for any loss, costs, damages, or expenses incurred or sustained by anyone resulting from any interpretation made by any of our officers, agents or employees. These interpretations are also subject to our general terms and conditions set out in our current Price Schedule.

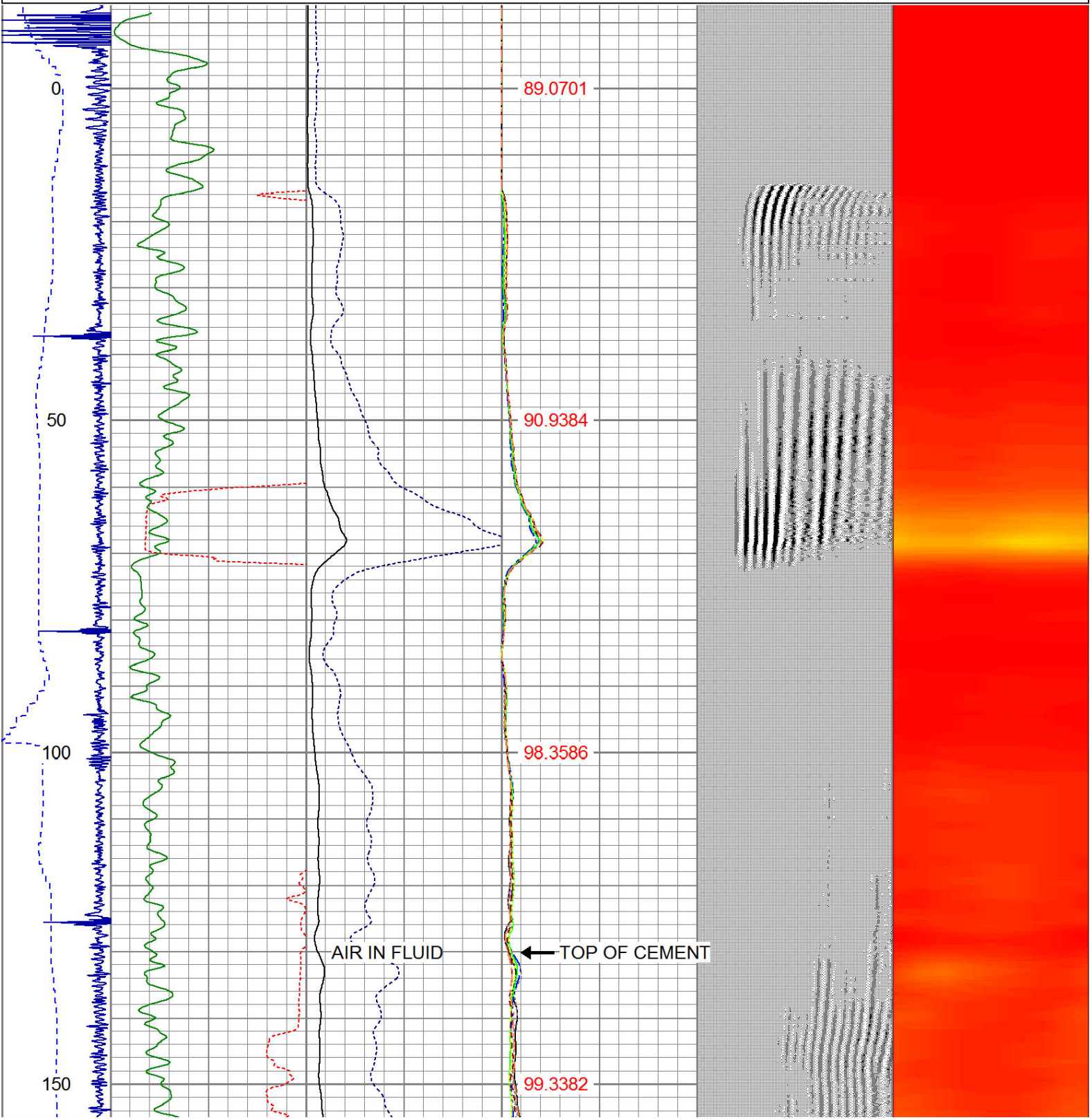
Comments

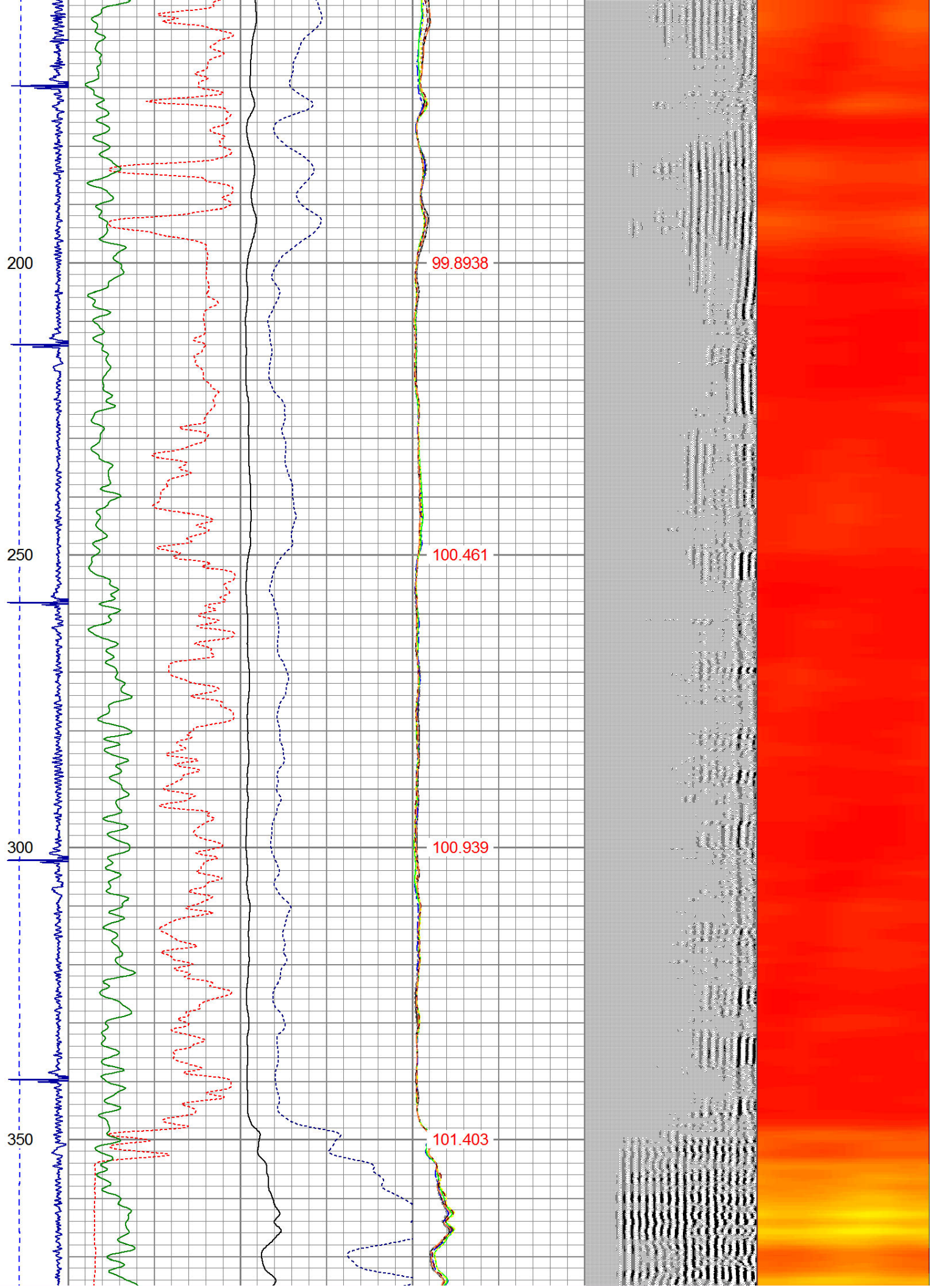
RAN CBL TO VERIFY CEMENT BOND
FLUID LEVEL @230' ON ARRIVAL TOP LOADED ON OUR WAY IN THE HOLE
CALLED CEMENT @130' DUE TO AIR IN FLUID THERE MAY BE CEMENT UP HIGHER
THANK YOU FOR USING WARRIOR !!!!!!!

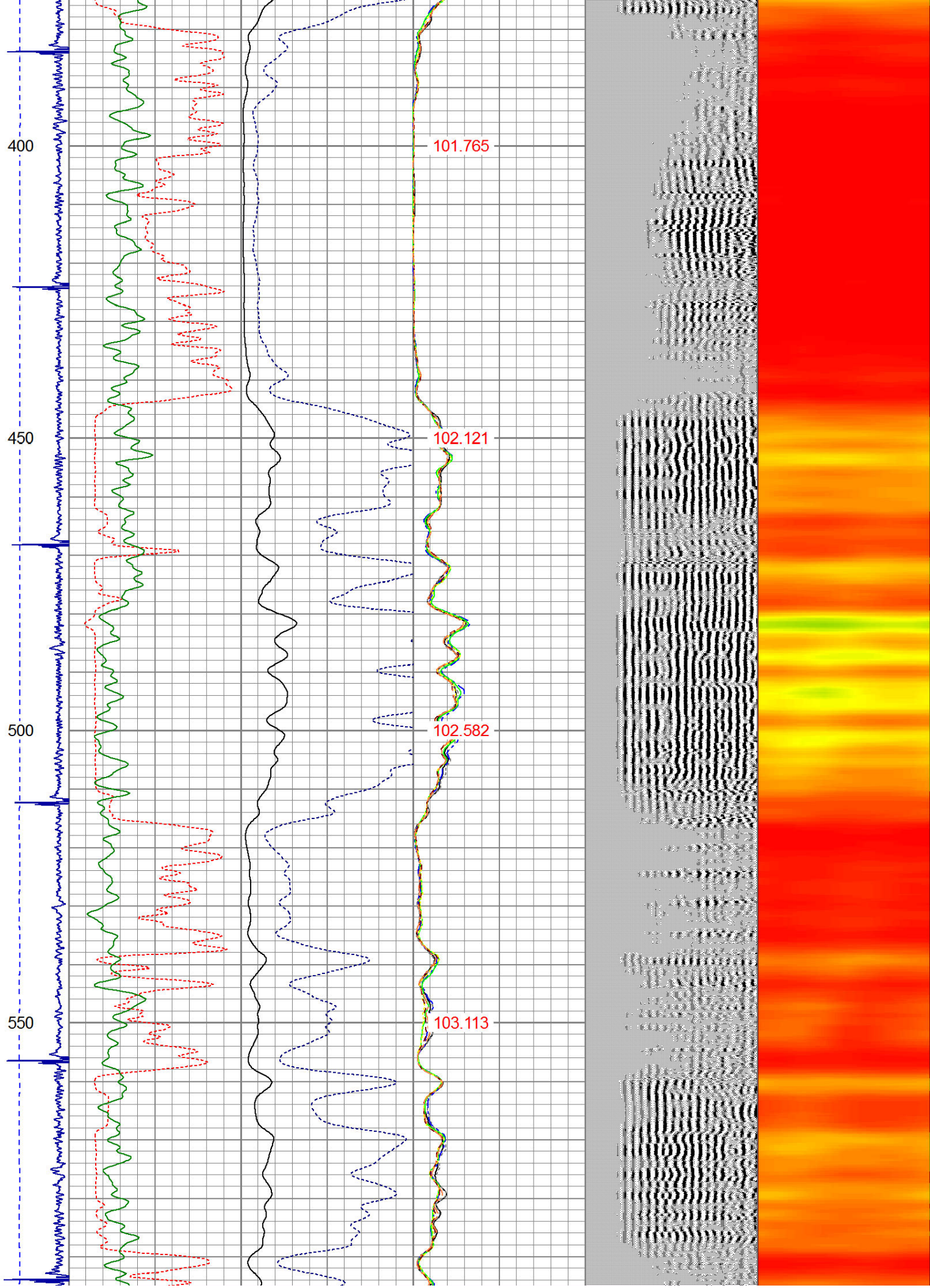
Sensor	Offset (ft)	Schematic	Description	Len (ft)	OD (in)	Wt (lb)
			1_4	1.00	1.36	5.00

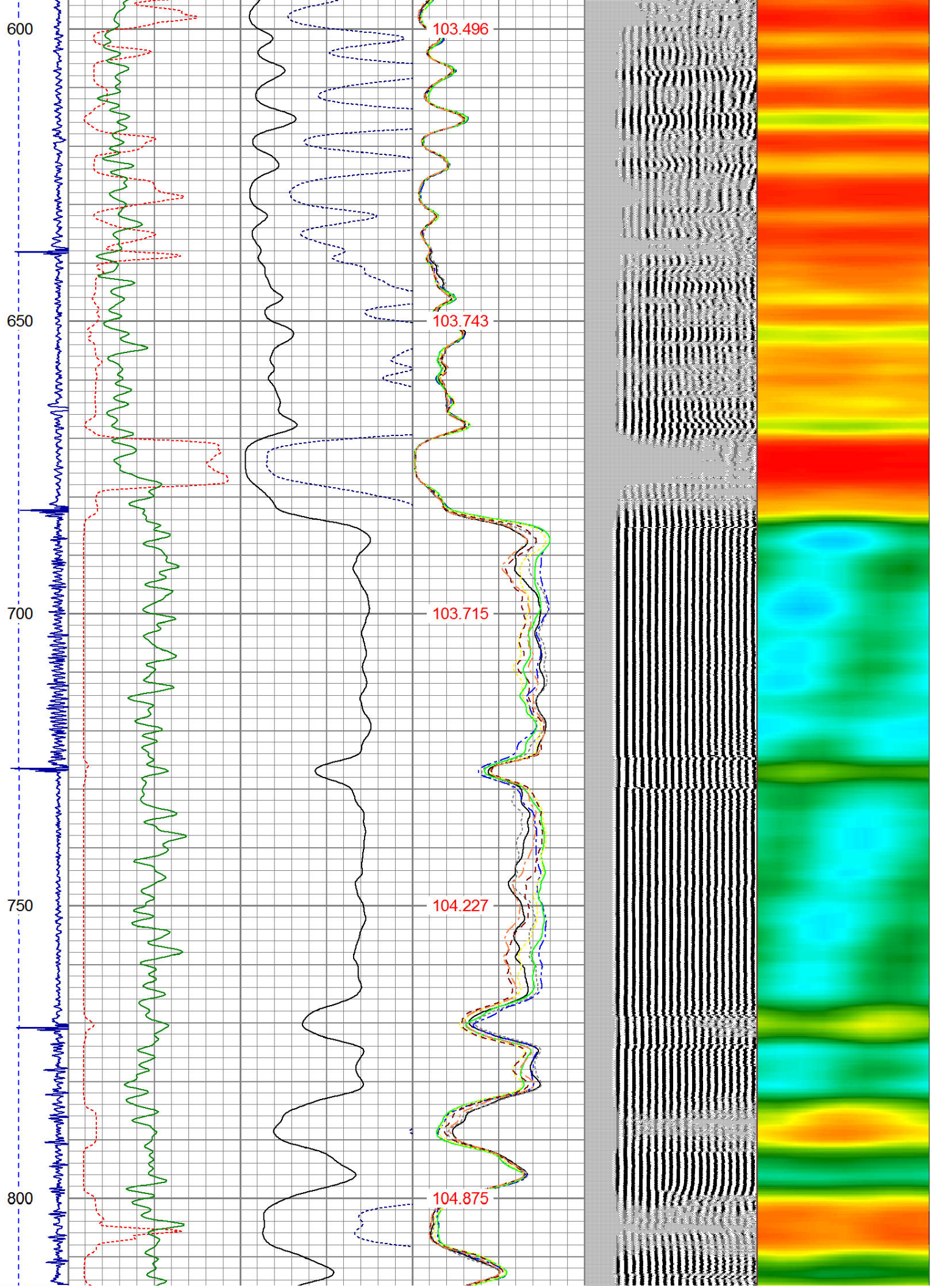
			PTS275	2.83	2.75	
HEADVOLT	16.13					
IntTemp	14.71					
WVF3FT	11.46		RBT-Probe (Base)	8.92	2.75	90.00
WVFCAL	11.46		Probe Radii Bond Tool with Digital Telemetry			
WVFS1	11.46					
WVFS2	11.46					
WVFS3	11.46					
WVFS4	11.46					
WVFS5	11.46					
WVFS6	11.46					
WVFS7	11.46					
WVFS8	11.46					
WVF5FT	10.46					
CNLSC	6.00		CNT-Probe_B (275)	2.88	2.75	40.00
CNSSC	5.17		6 bow centralizer			
CCL	3.64					
			GR-Probe (275)	4.33	2.75	30.00
			Probe 2.75"			
GR	0.90					
Dataset: i & j 7-6.db: field/well/run1/pass3 Total Length: 19.96 ft Total Weight: 165.00 lb O.D. 2.75 in						

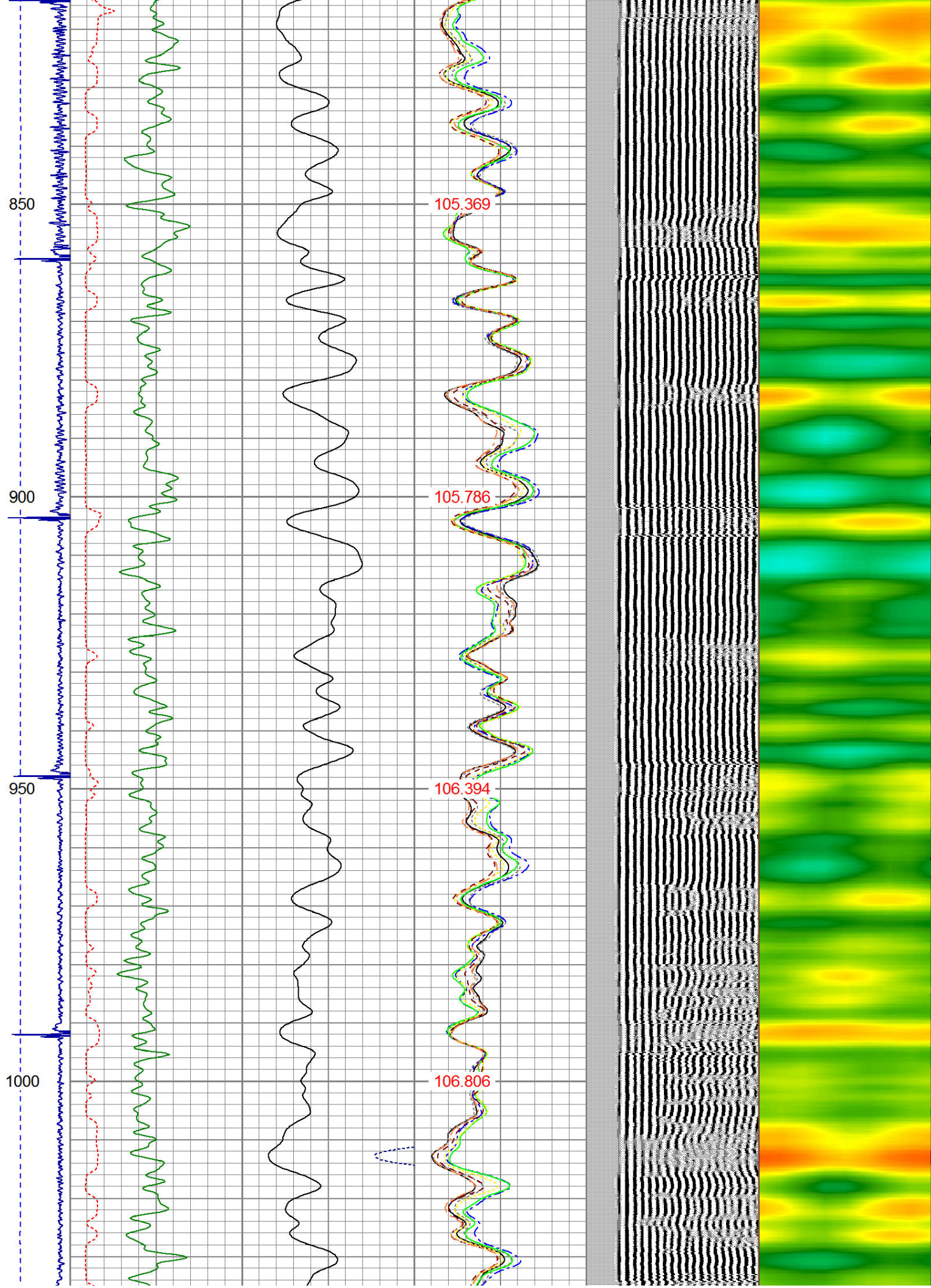
Dataset Creation: Thu Jan 22 07:53:05 2015 by Log 7.0 B1																	
Charted by: Depth in Feet scaled 1:240																	
-9	CCL	1	200	TT (usec)	900	0	AMP (mV)	100	0	AMPS1	100	200	VDL	1200	1	Cement Map	8
LSPD	(ft/min)	0	250	0	GR (GAPI)	200	0	AMPx5 (mV)	20	0	AMPS2	100		1	100		100
				200	GR (GAPI)	400				0	AMPS4	100					
										0	AMPS5	100					
										0	AMPS6	100					
										0	AMPS7	100					
										0	AMPS8	100					
										IntTemp							
										(degF)							

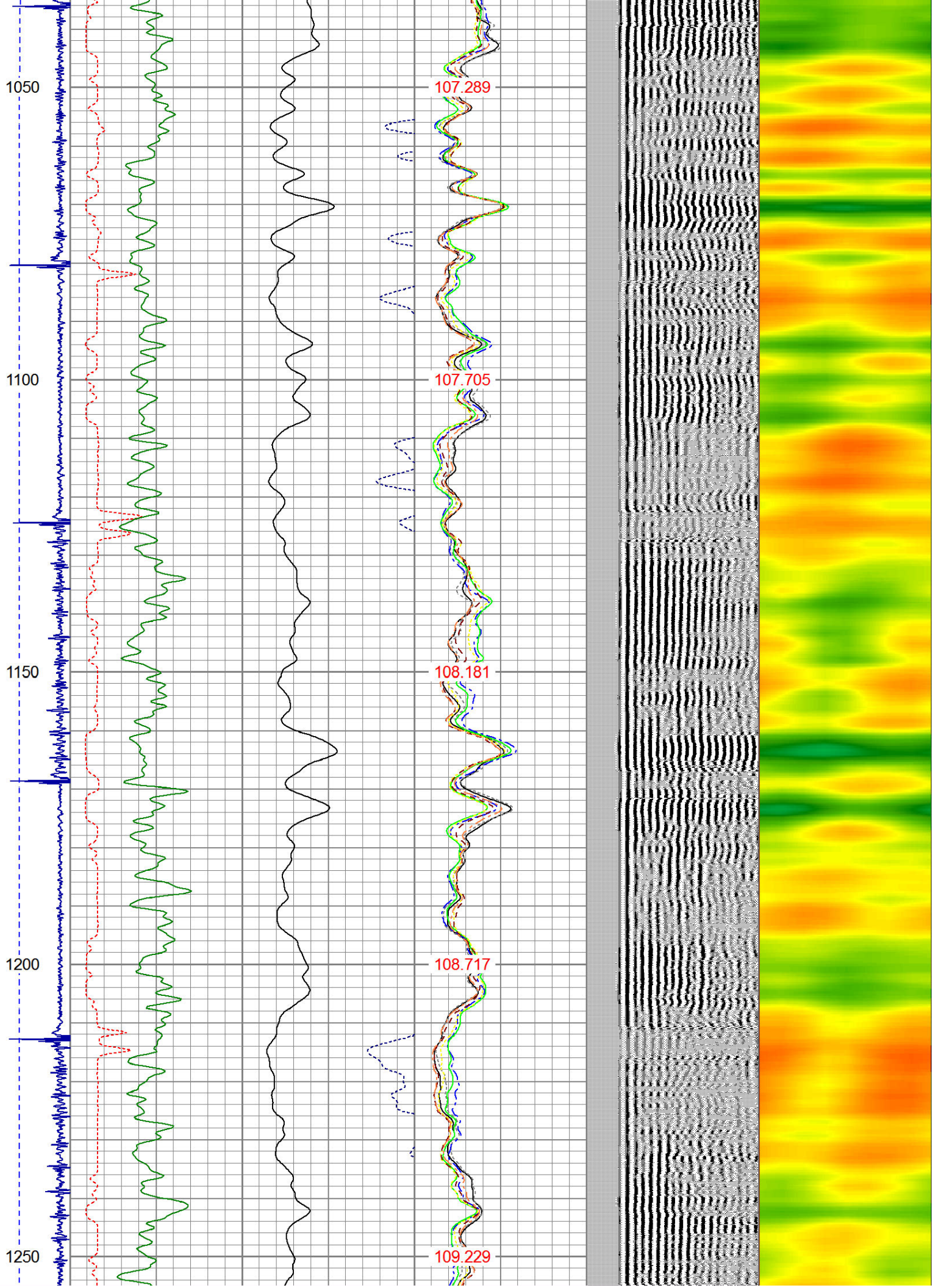


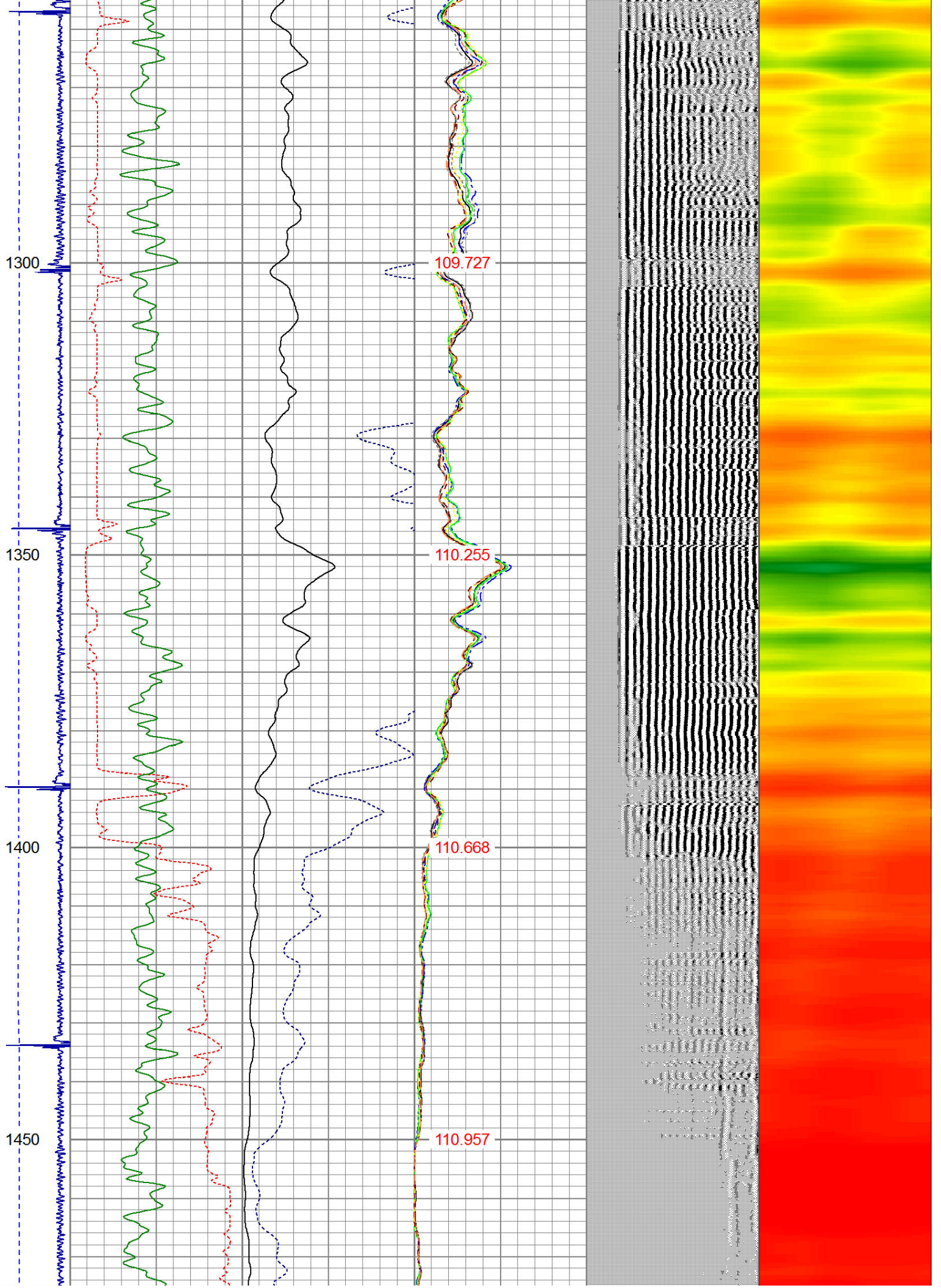


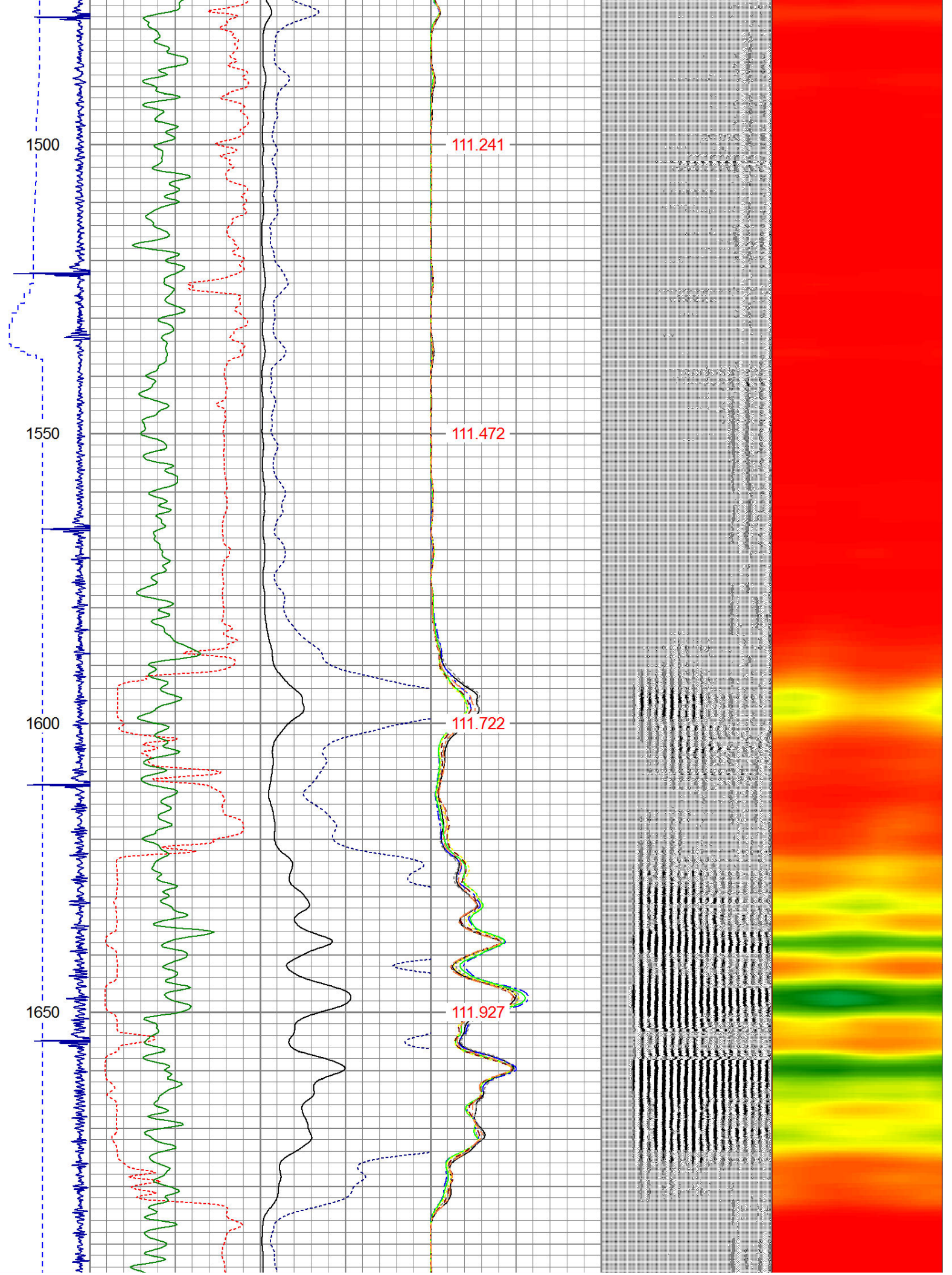


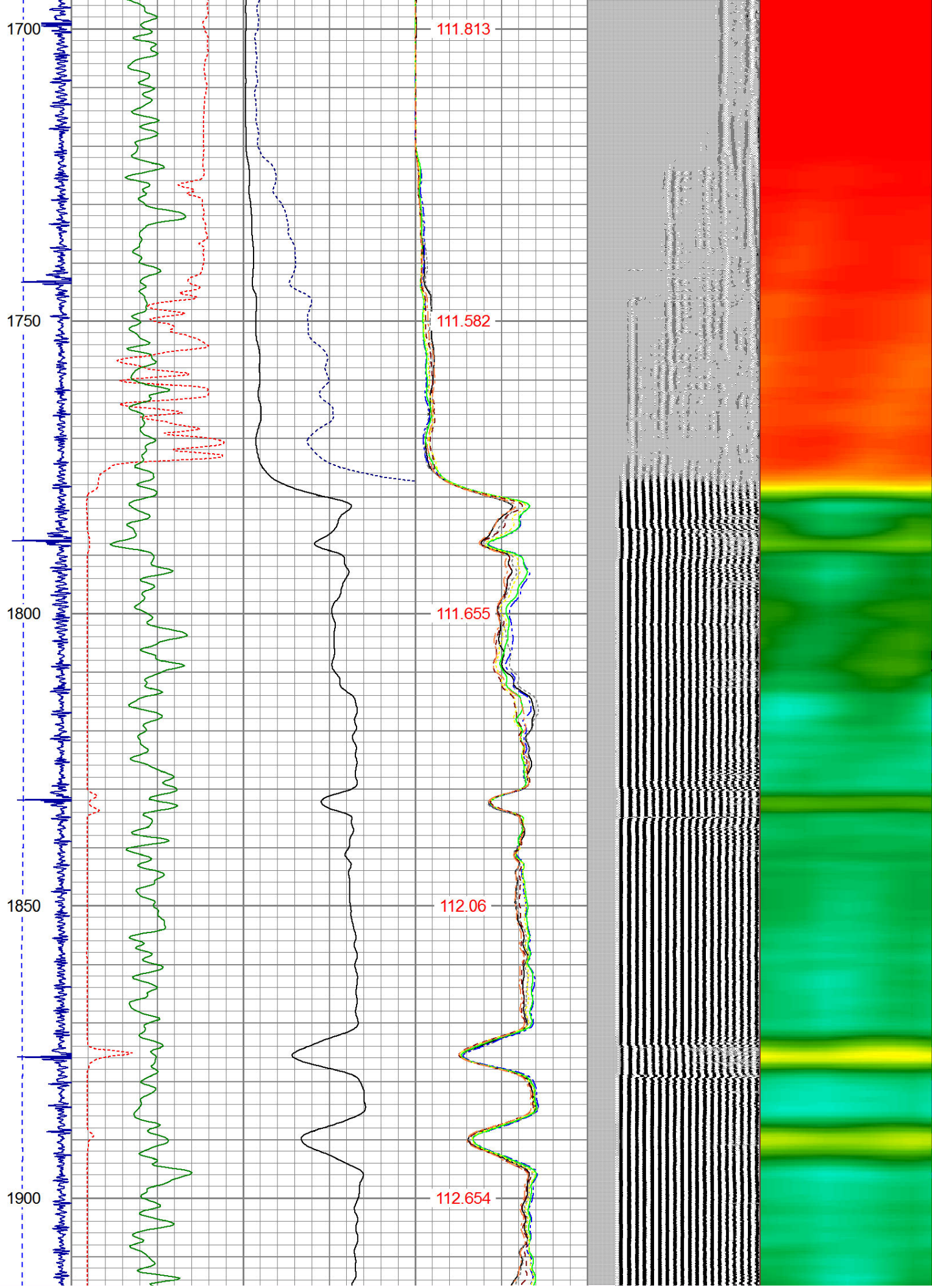


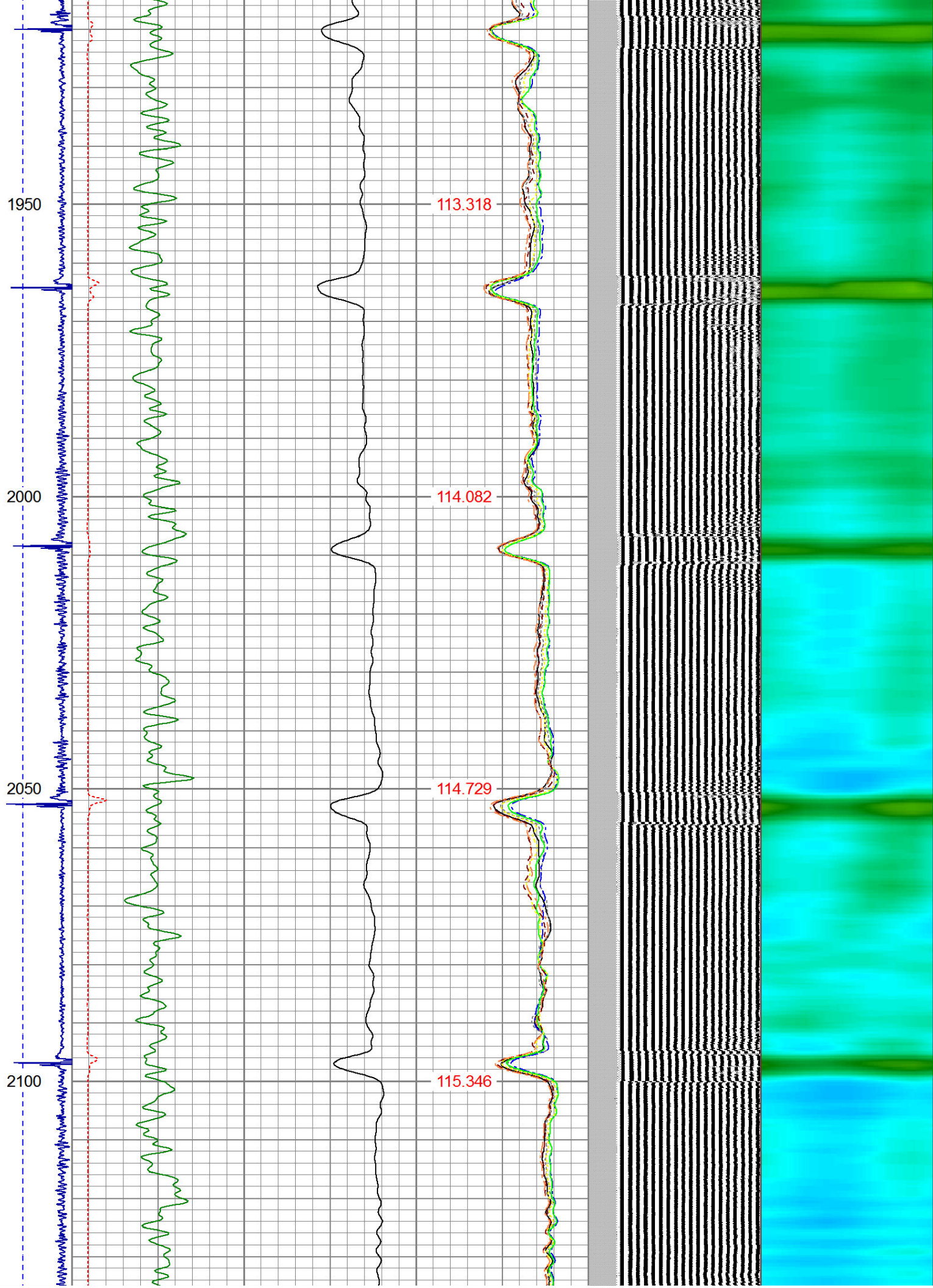


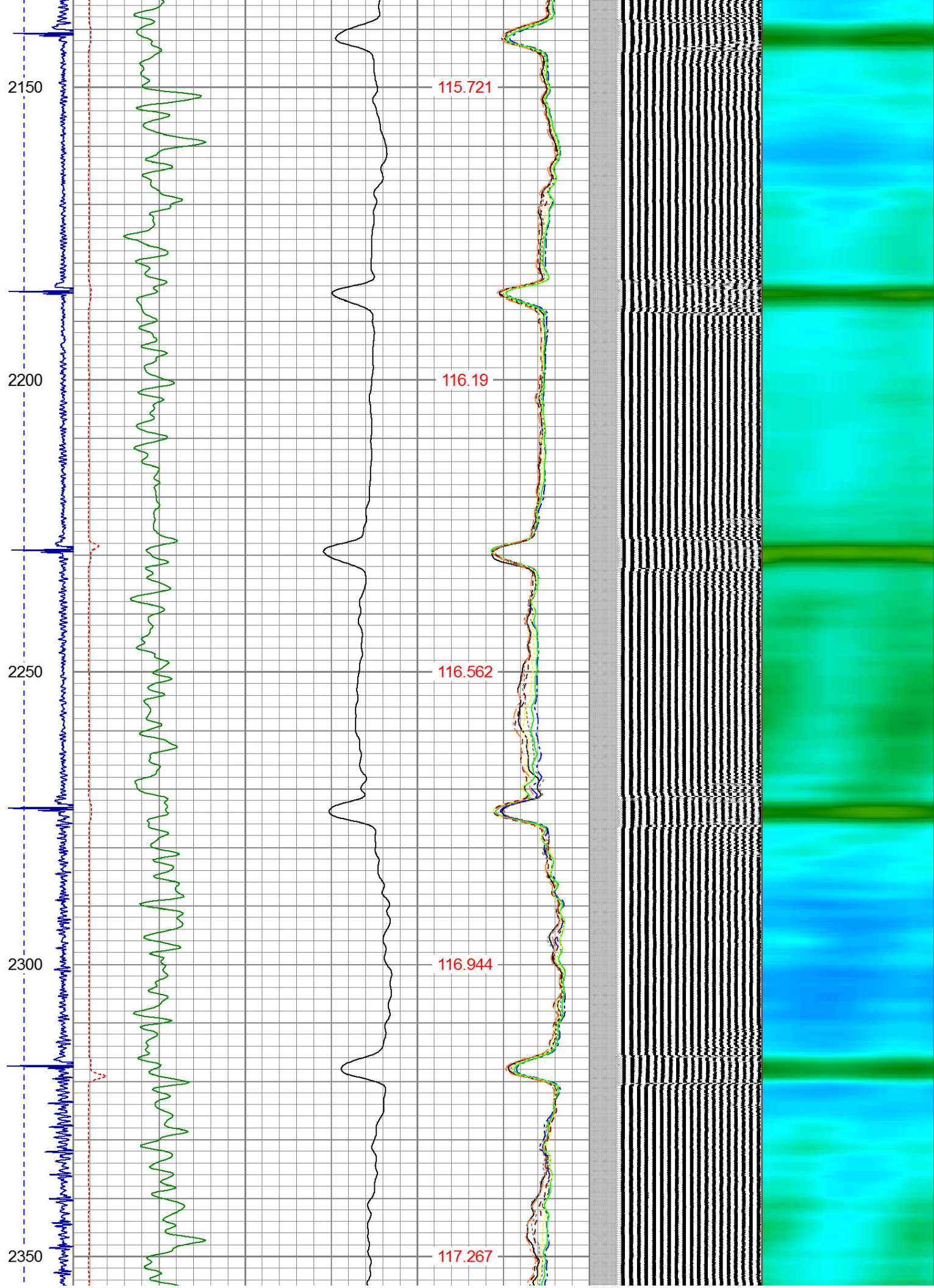


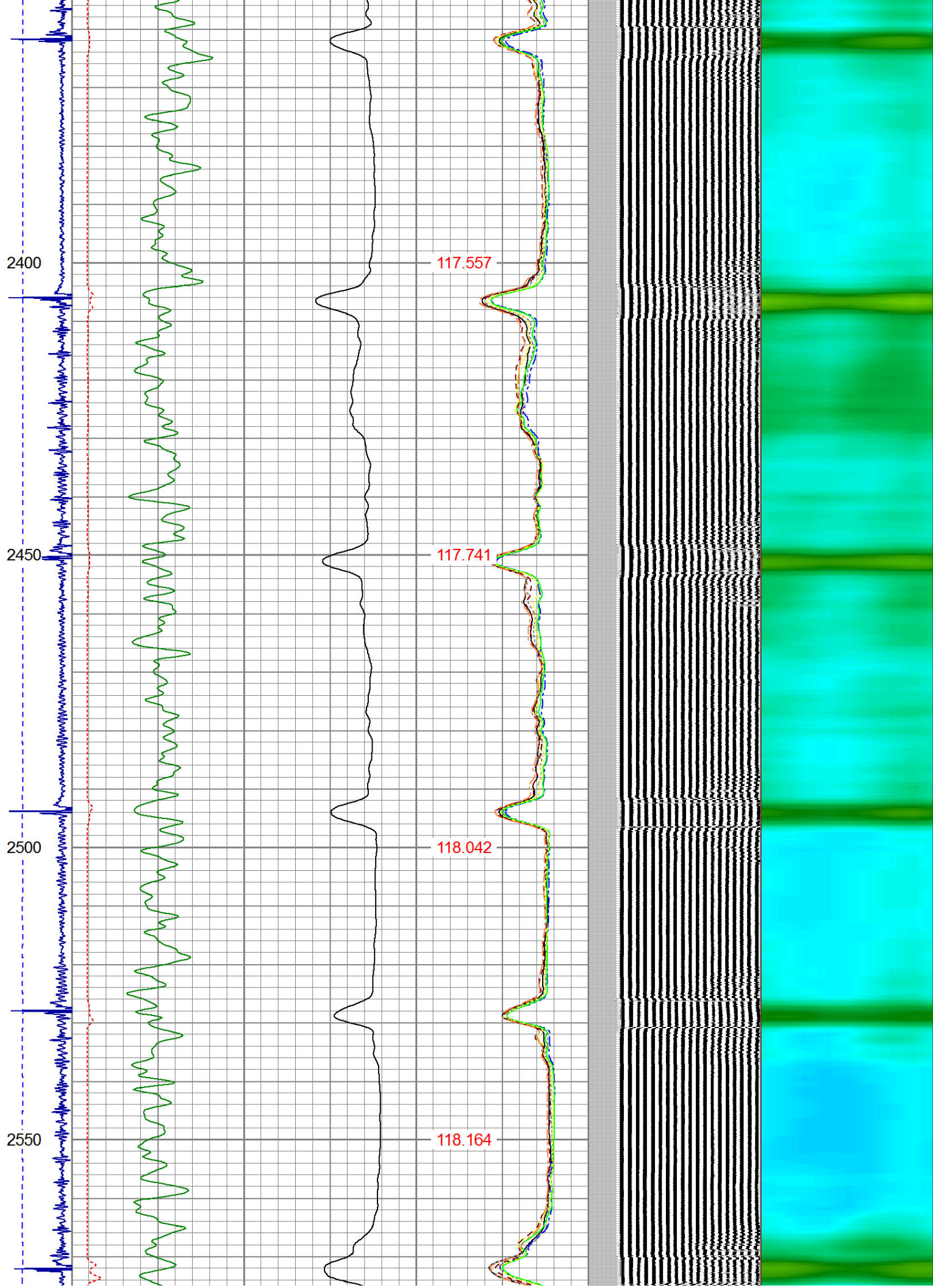


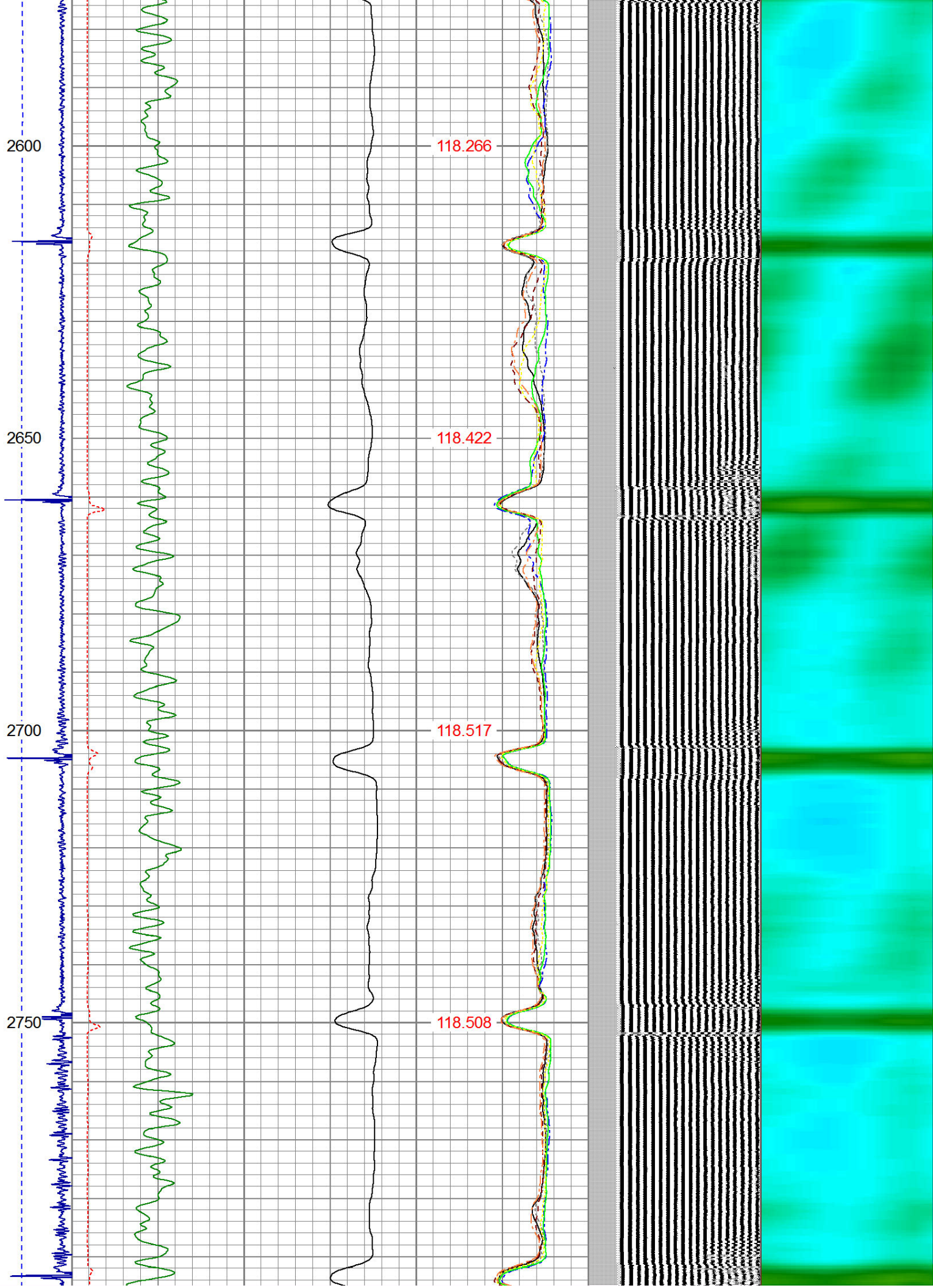


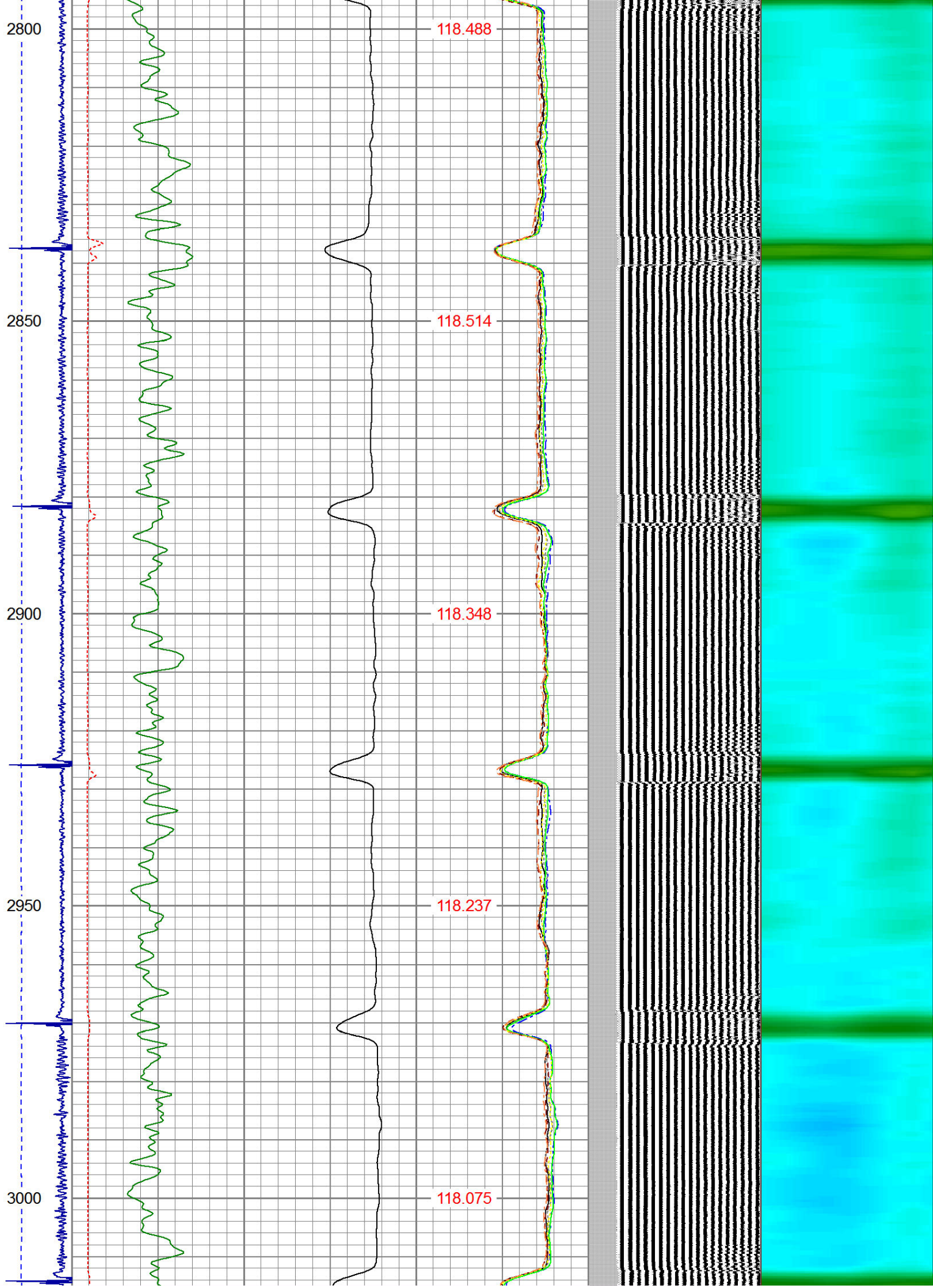












3050

3100

3150

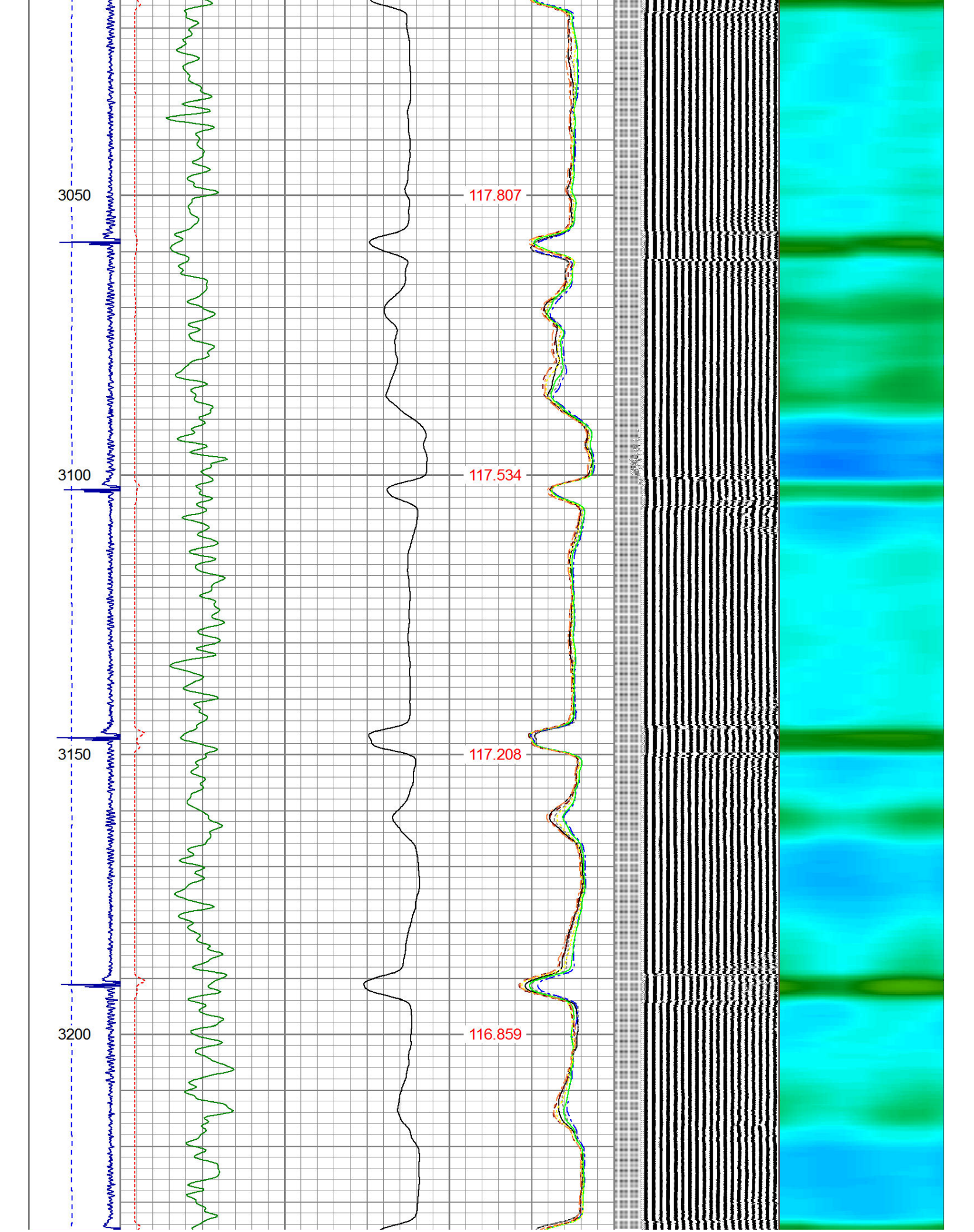
3200

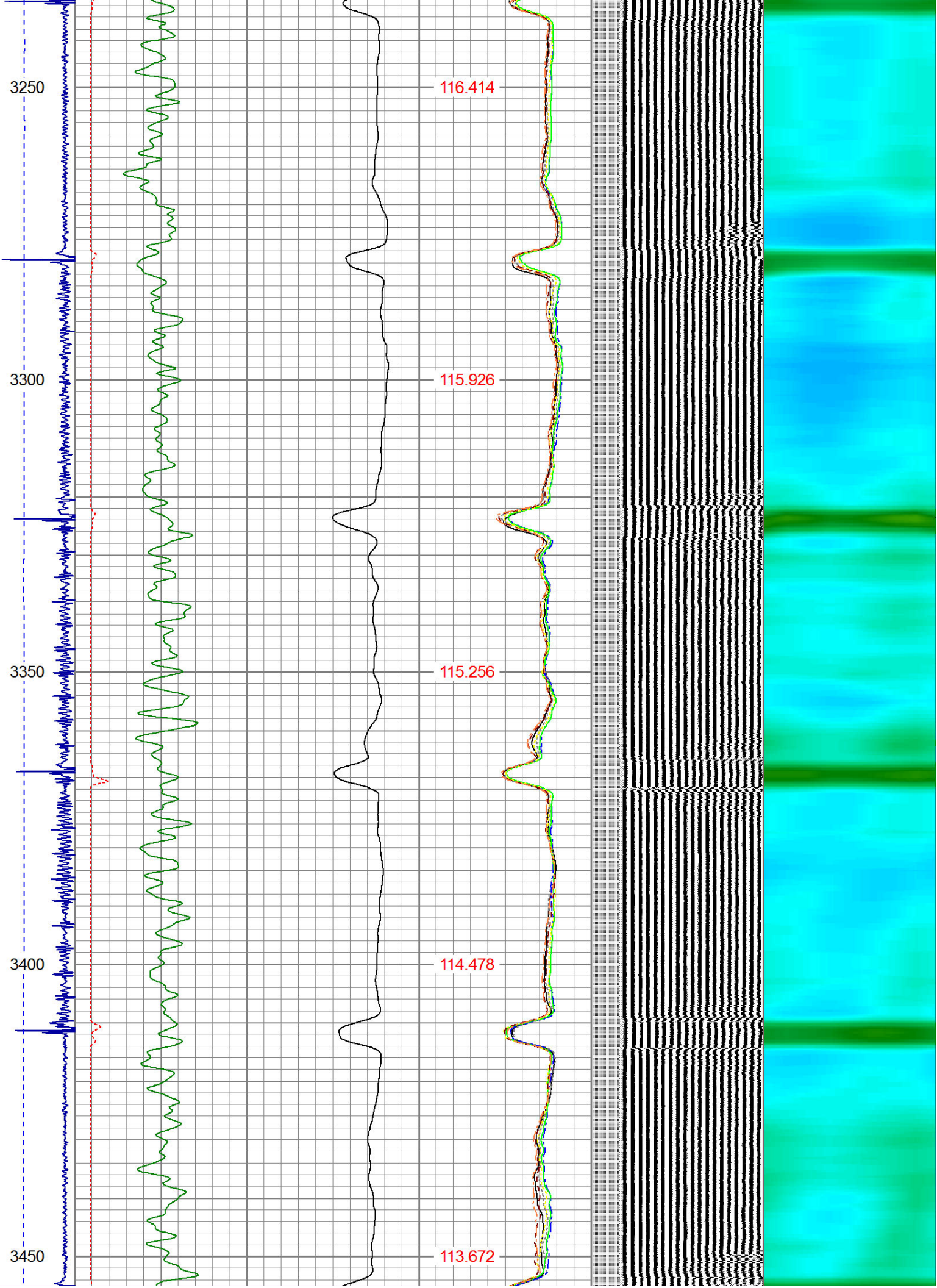
117.807

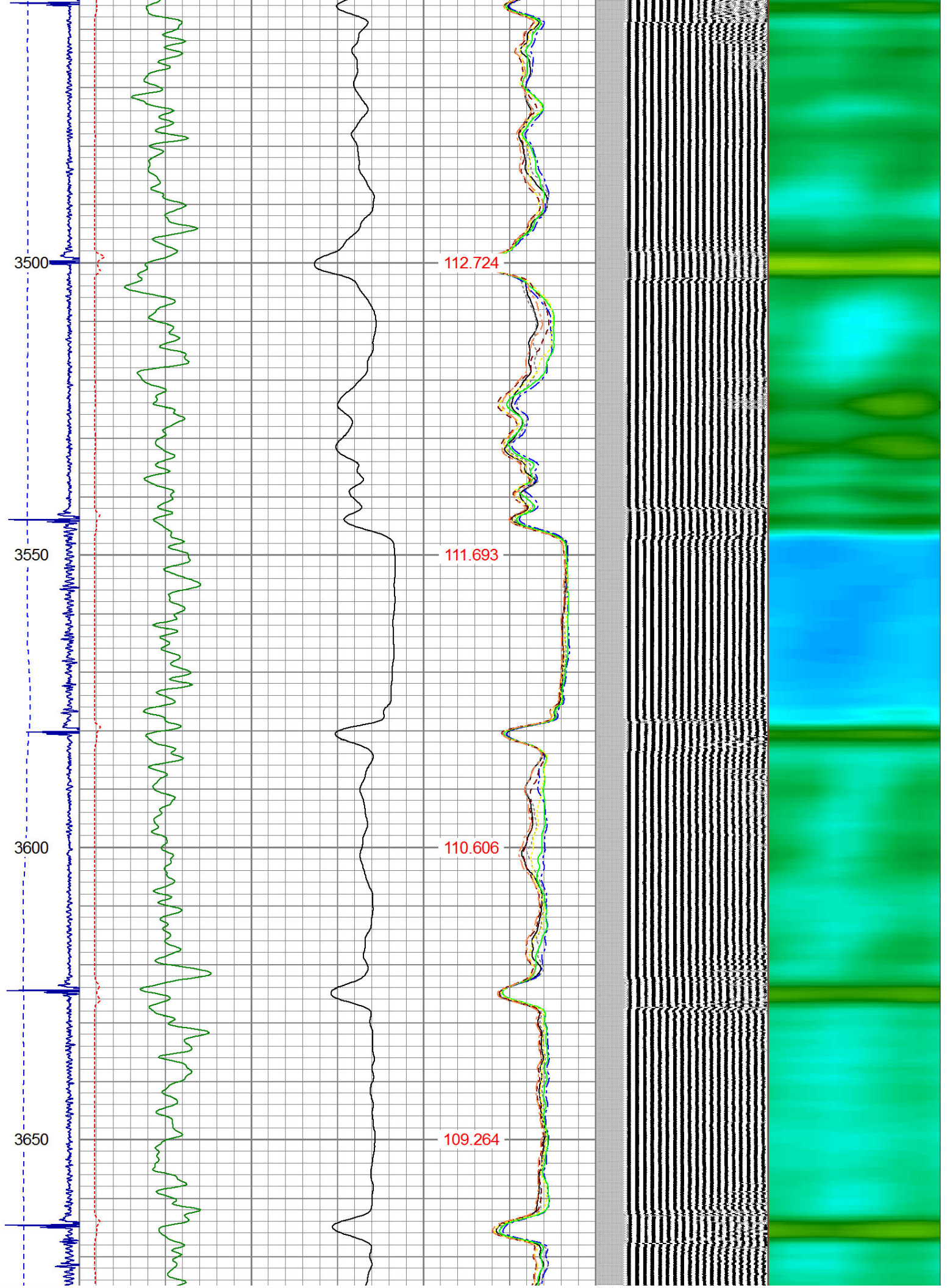
117.534

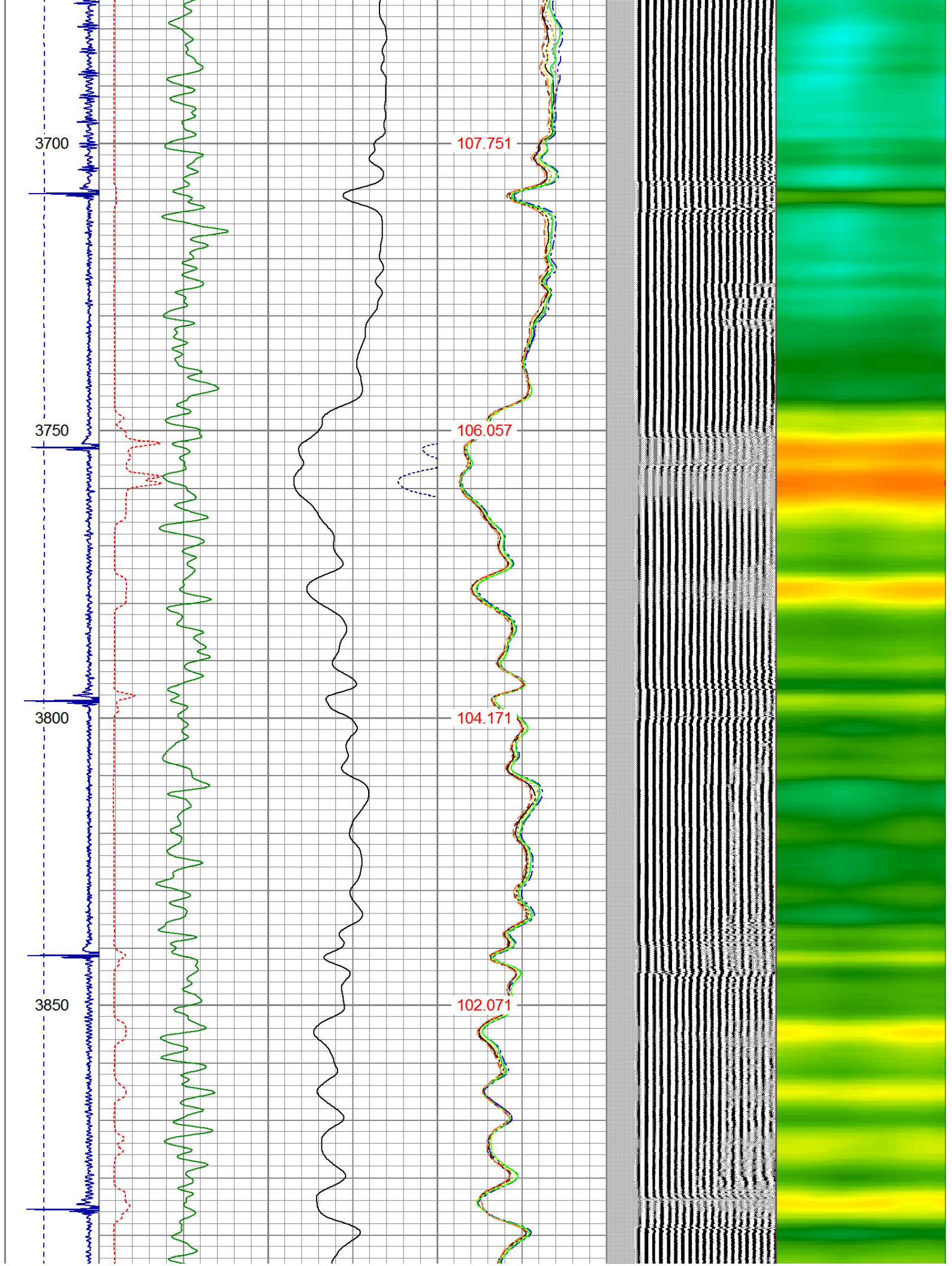
117.208

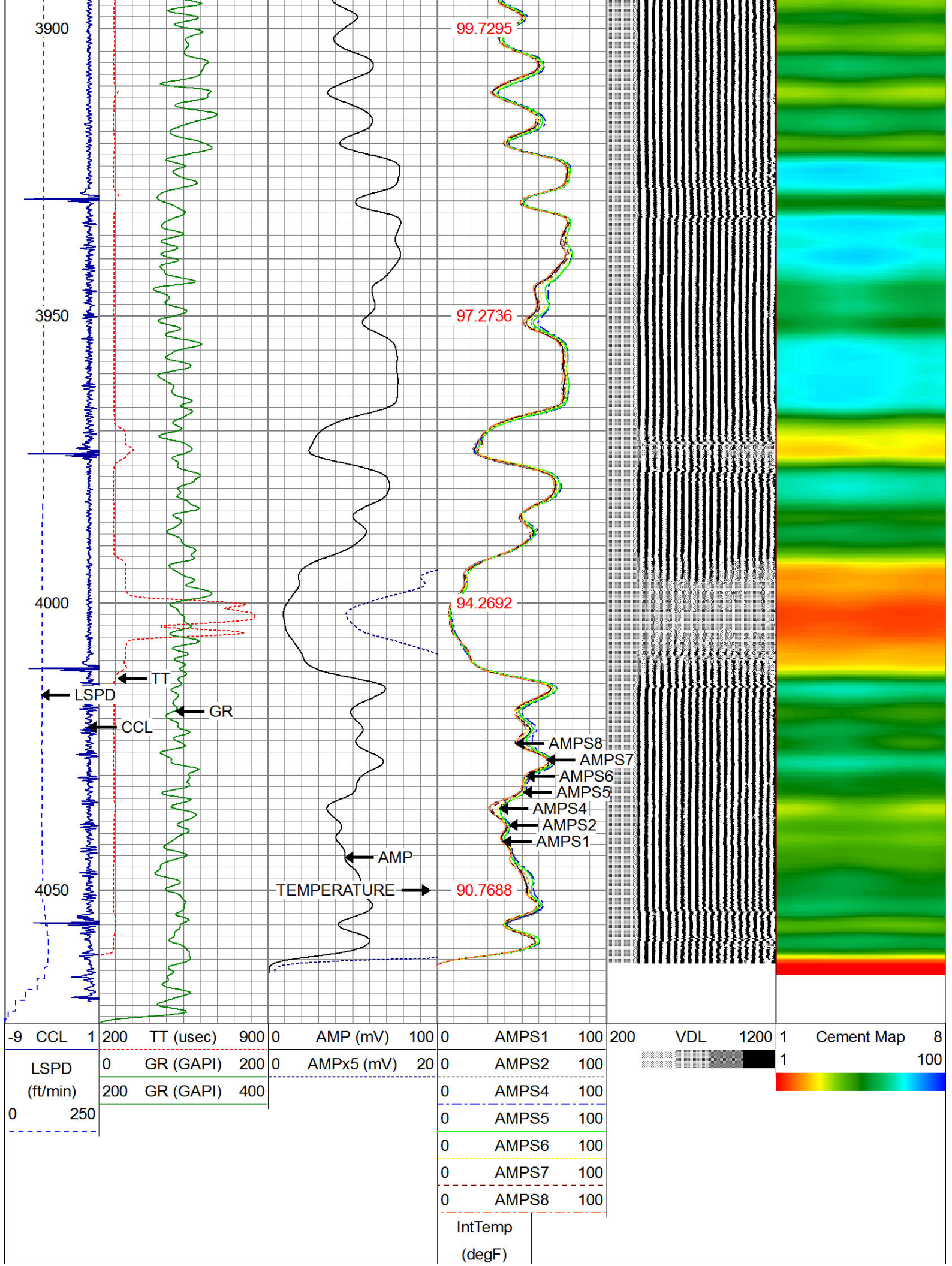
116.859













WARRIOR

ENERGY SERVICES

Company KERR MCGEE OIL AND GAS

Well I & J 7-6

Field WATTENBERG

County WELD

State CO