



**RADIAL CEMENT BOND LOG**  
**GAMMA RAY**  
**CCL**

Company	Kerr McGee Oil & Gas		
Well	BERIG UPRR 42-35 #1		
Field	Wattenberg		
County	Weld		
State	CO		
Location:	API # : 05-123-12700 SE/NE LAT: 40.27030 LONG: -104.73750 SEC 35 TWP 4N RGE 66W		
Permanent Datum	GL	Elevation	4806'
Log Measured From	KB: 10'	Elevation	K.B. 4816' D.F. 4815' G.L. 4806'
Drilling Measured From	KB		

Date	12-18-2014						
Run Number	ONE						
Depth Driller	7386'						
Depth Logger	1750'						
Bottom Logged Interval	1747'						
Top Log Interval	Surface						
Open Hole Size	7 7/8						
Type Fluid	WATER						
Density / Viscosity	1.0						
Max. Recorded Temp.	95						
Estimated Cement Top	ABOVE 100'						
Time Well Ready	NA						
Time Logger on Bottom	NA						
Equipment Number	7770						
Location	GREELEY						
Recorded By	A.STEERMAN						
Witnessed By	SOCORRO						
Borehole Record							
Run Number	Bit	From	To	Size	Weight	From	To
Casing Record	Size	Wgt/Ft	Top	Bottom			
Surface String	8 5/8	24#	0	342'			
Prot. String							
Production String	4 1/2	11.6#	0	7385'			
Liner							

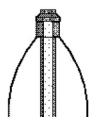
<<< Fold Here >>>

All interpretations are opinions based on inferences from electrical or other measurements and we cannot and do not guarantee the accuracy or correctness of any interpretation, and we shall not, except in the case of gross or willful negligence on our part, be liable or responsible for any loss, costs, damages, or expenses incurred or sustained by anyone resulting from any interpretation made by any of our officers, agents or employees. These interpretations are also subject to our general terms and conditions set out in our current Price Schedule.

Comments

NOT CORROLATED  
RAN CBL TO VERIFY CEMENT.



THANK YOU FOR USING WARRIOR ENERGY!

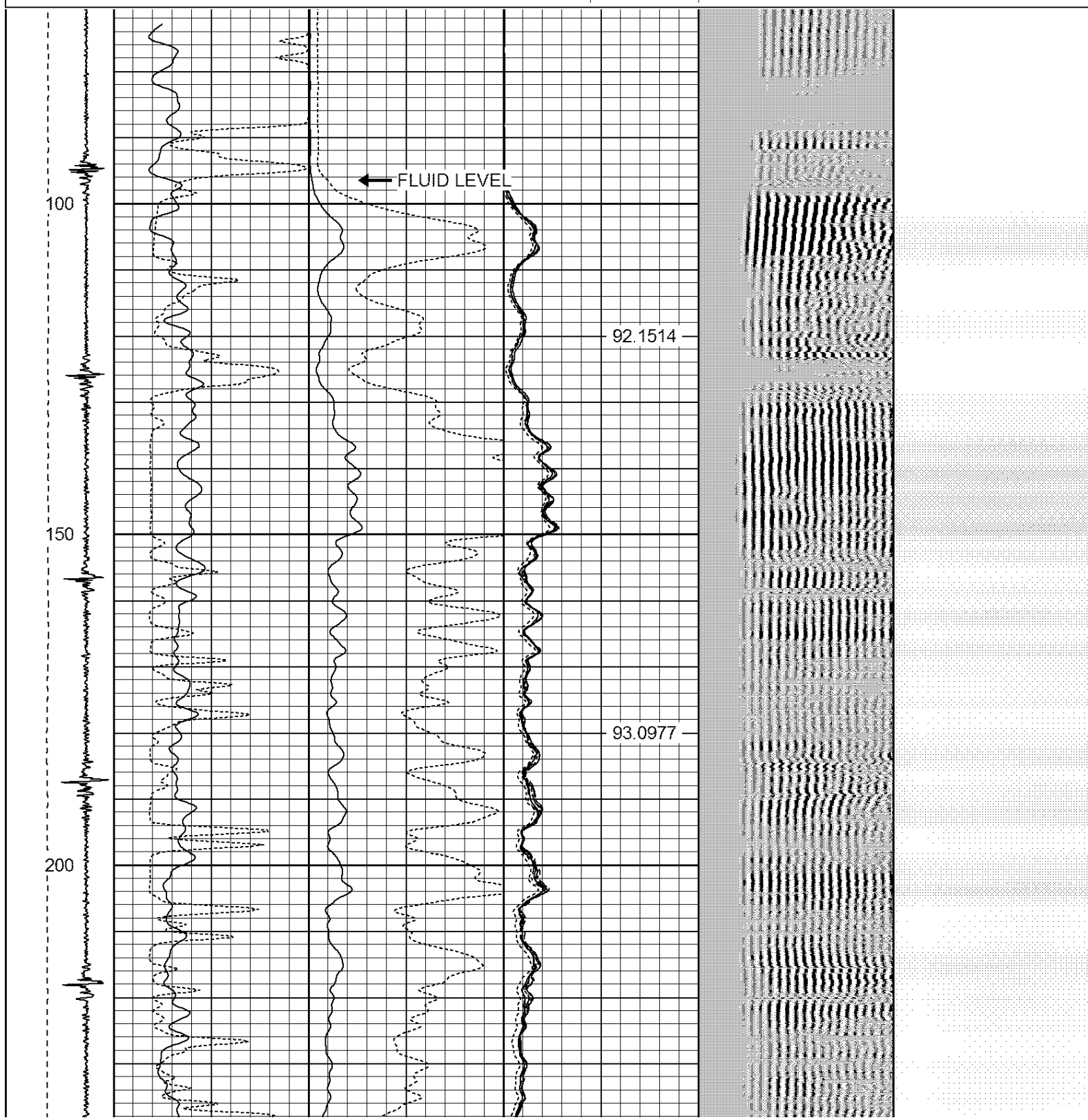
Sensor	Offset (ft)	Schematic	Description	Len (ft)	OD (in)	Wt (lb)
						

Tool Joint	Tool Joint Depth (ft)	Tool Joint Description	Tool Joint Length (ft)	Tool Joint Weight (lb)	Tool Joint O.D. (in)
CENT #2 -Probe (PTS_MONO)	2.75		2.75	35.00	
HEADVOLT	16.00				
IntTemp	14.58				
WVFS3FT	11.33				
WVFCAL	11.33				
WVFS1	11.33				
WVFS2	11.33				
WVFS3	11.33				
WVFS4	11.33				
WVFS5	11.33				
WVFS6	11.33				
WVFS7	11.33				
WVFS8	11.33				
WVF5FT	10.33				
RBT-Probe (Base)	8.92	Probe Radii Bond Tool with Digital Telemetry	2.75	90.00	
CENT-Probe (PT_MONO2)	2.75		2.75	35.00	
CCL	3.64				
GR-Probe (275)	4.33	Probe 2.75"	2.75	30.00	
GR	0.90				

Dataset:  
Total Length:  
Total Weight:  
O.D.

berig uprr 42-35 #1.db: field/well/run1/pass7  
18.75 ft  
190.00 lb  
2.75 in

-9	CCL	3	200	TT (usec)	800	0	AMP (mV)	100	0	AMPS1	100	200	VDL	1200	1	Cement Map	8
LSPD (ft/min)	0		0	GR (GAPI)	200	0	AMPx5 (mV)	20	0	AMPS2	100			1	100		
	200		200	GR (GAPI)	400				0	AMPS4	100						
									0	AMPS5	100						
									0	AMPS6	100						
									0	AMPS7	100						
0									0	AMPS8	100						
									IntTemp (degF)								



93.9788

94.9071

94.2154

94.4259

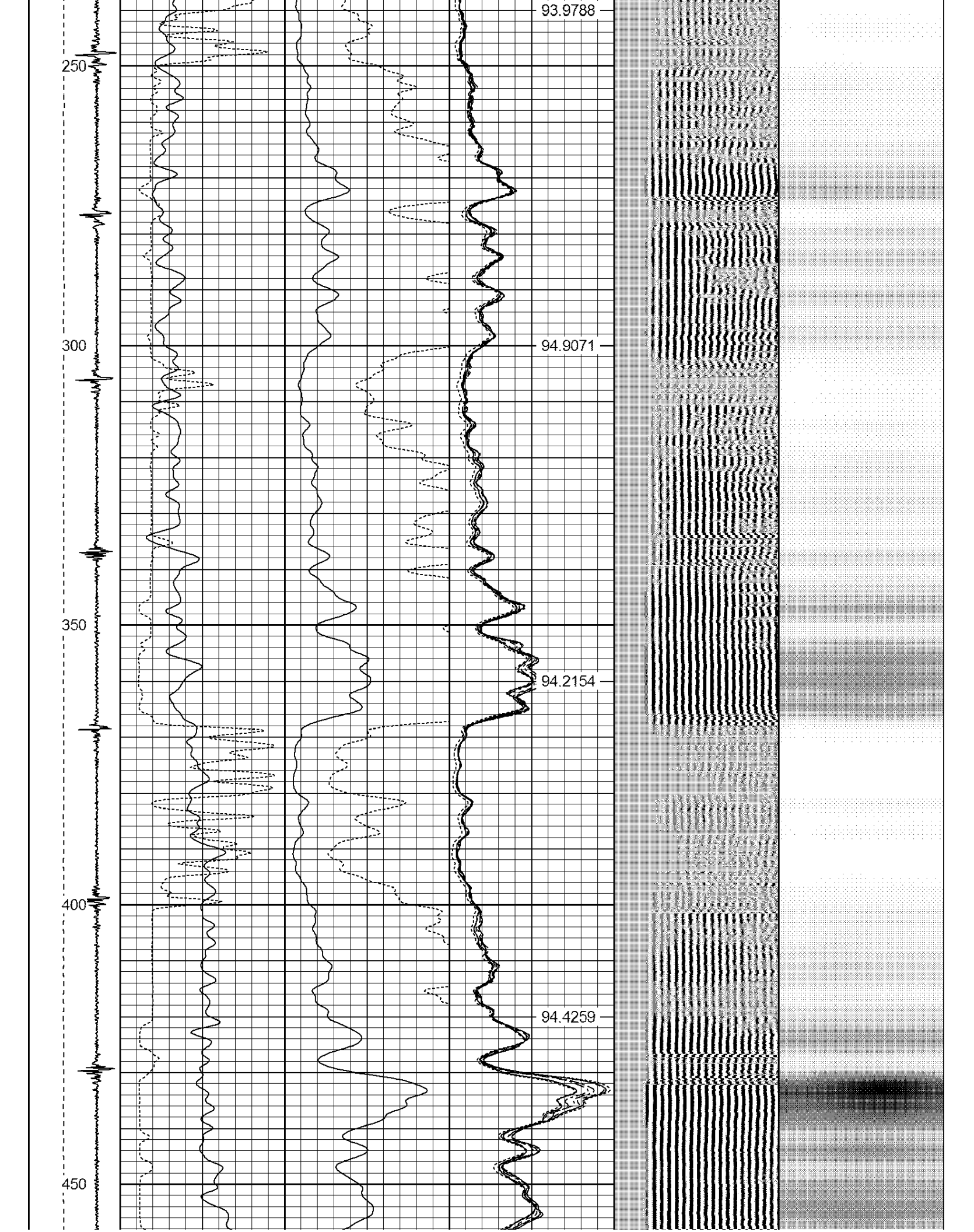
250

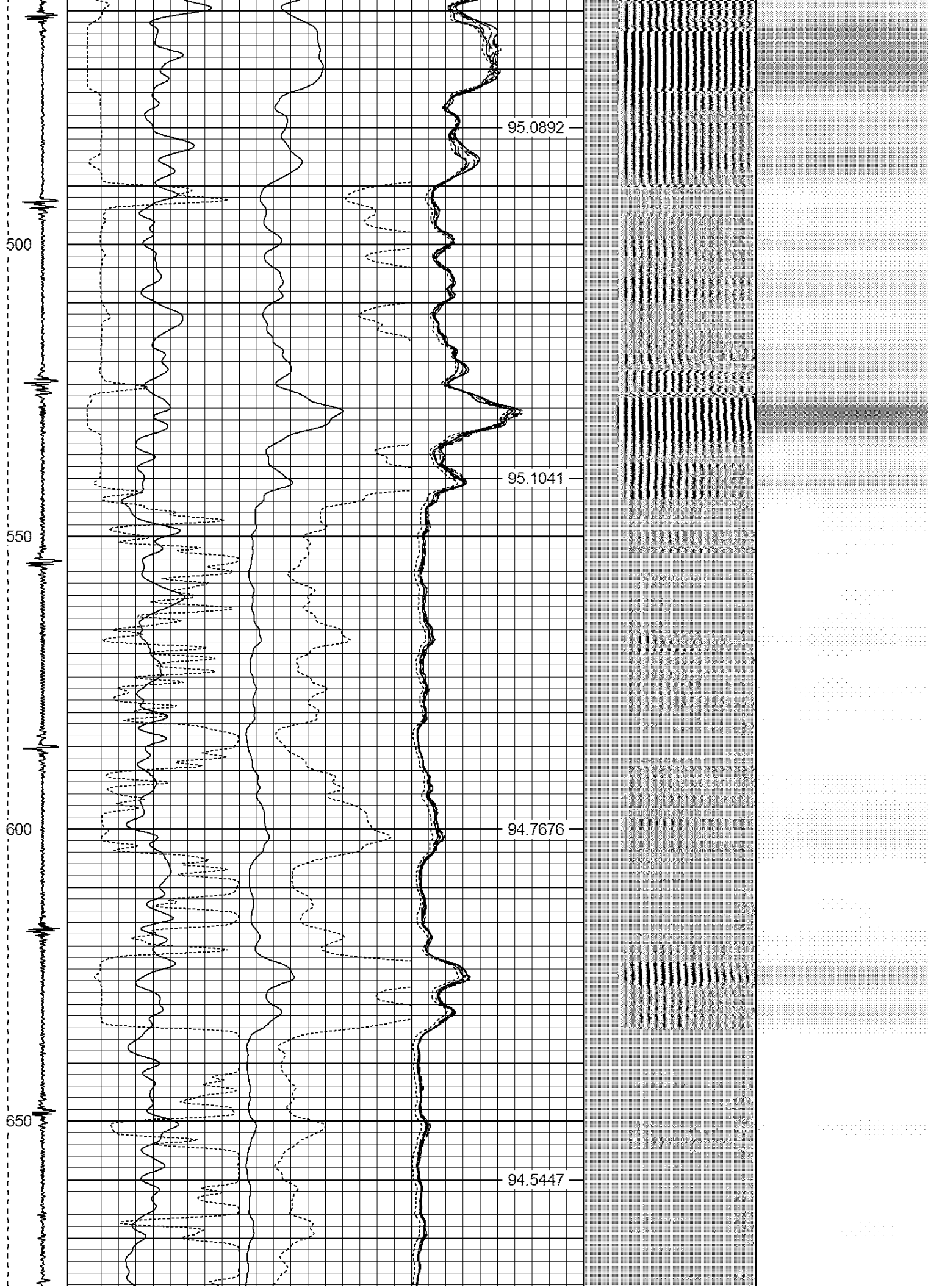
300

350

400

450





700

750

800

850

94.3503

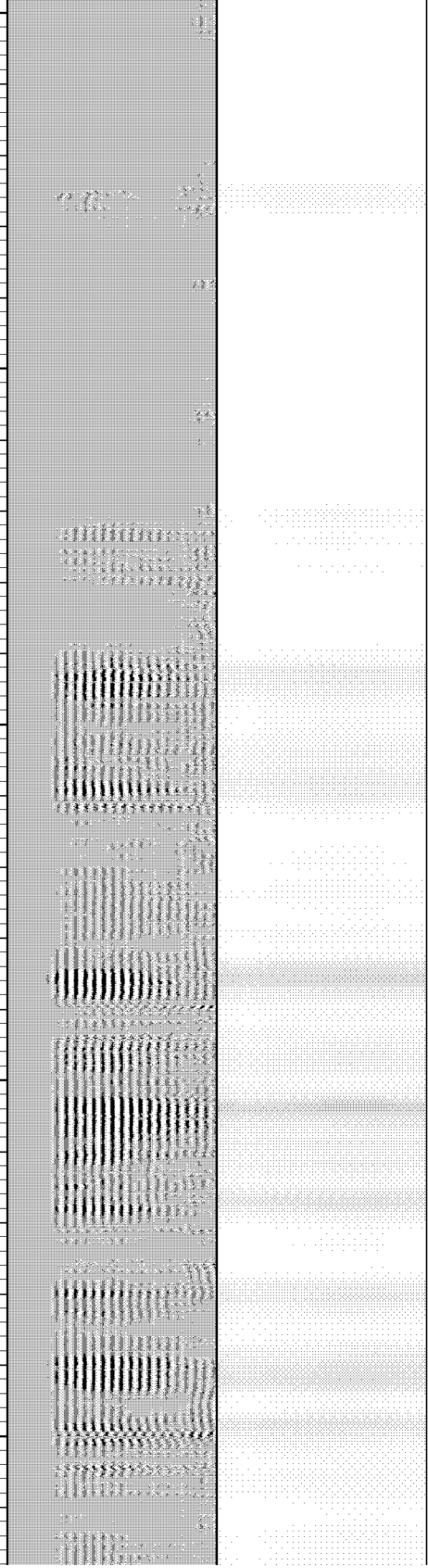
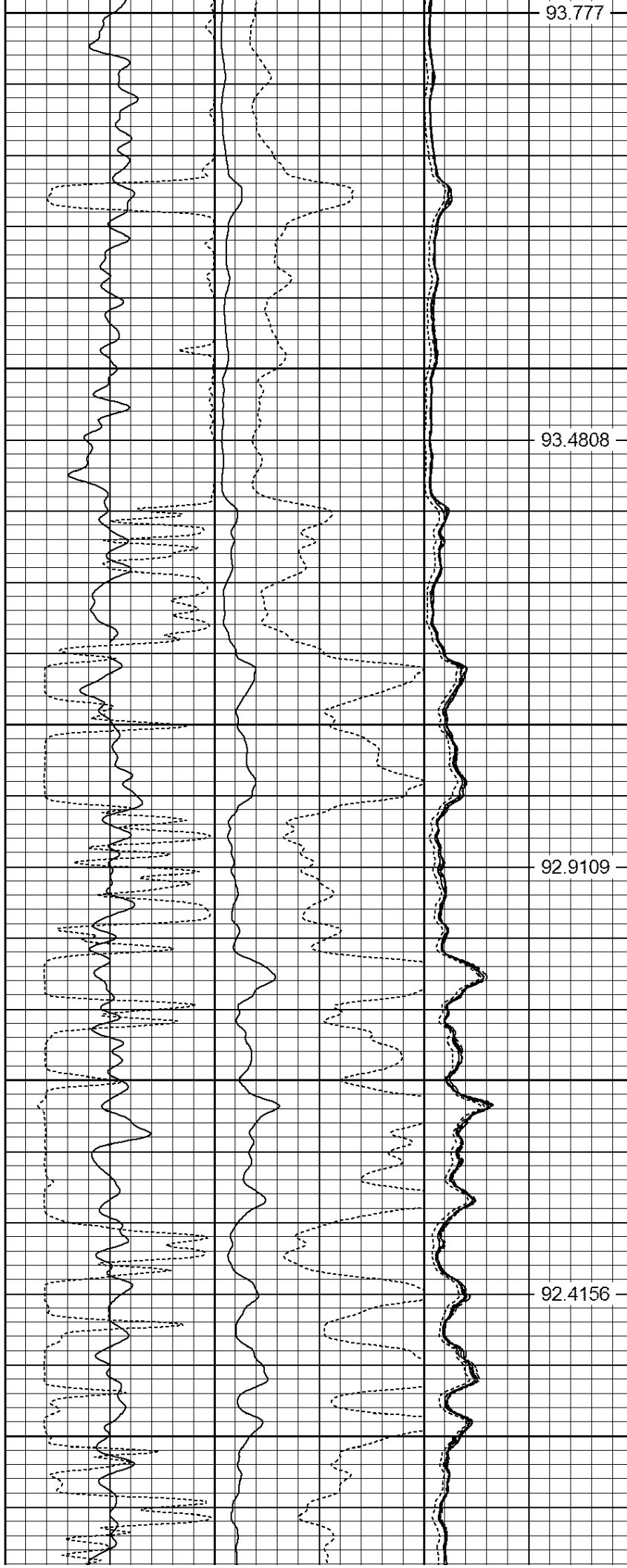
94.1784

93.9314

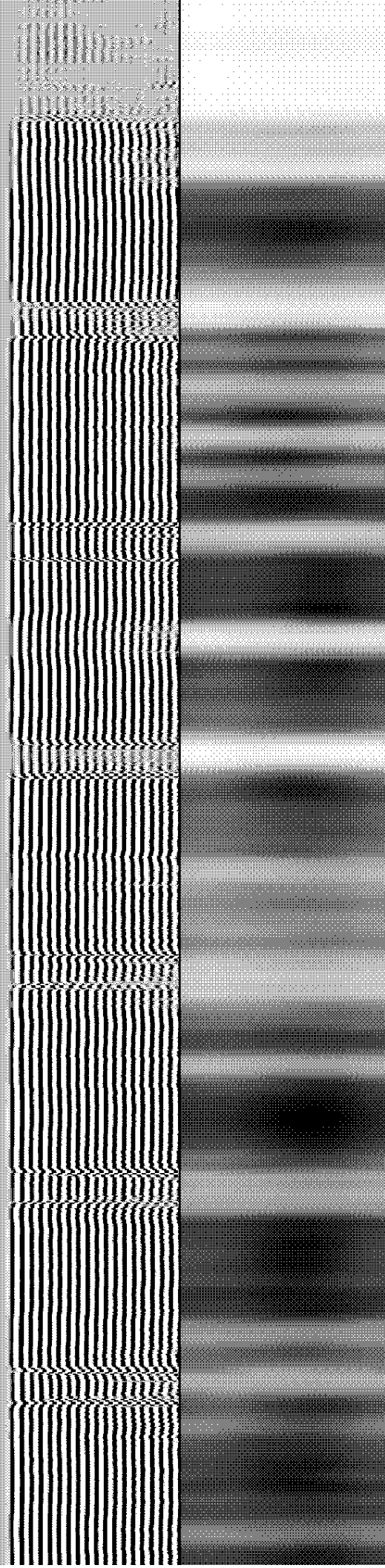
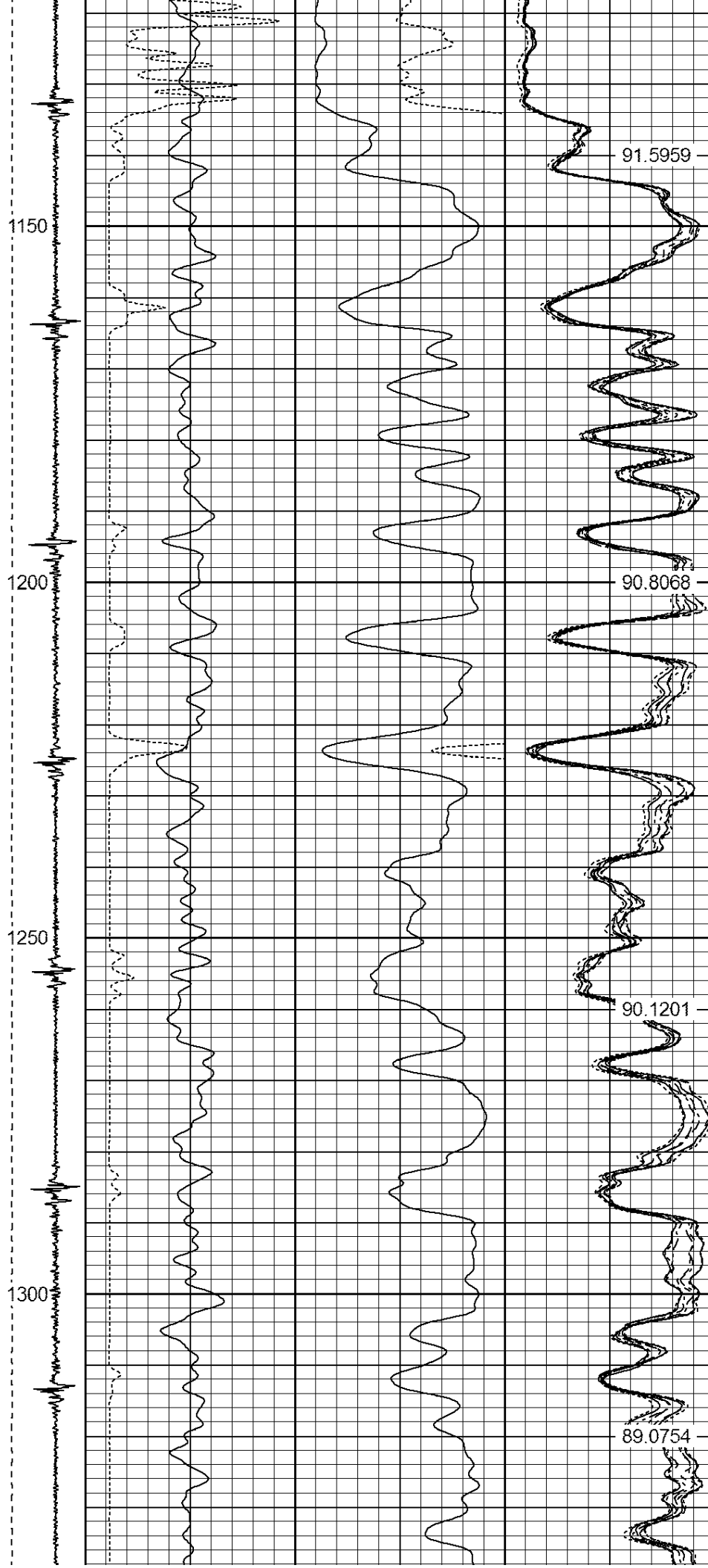
11111111

11111111

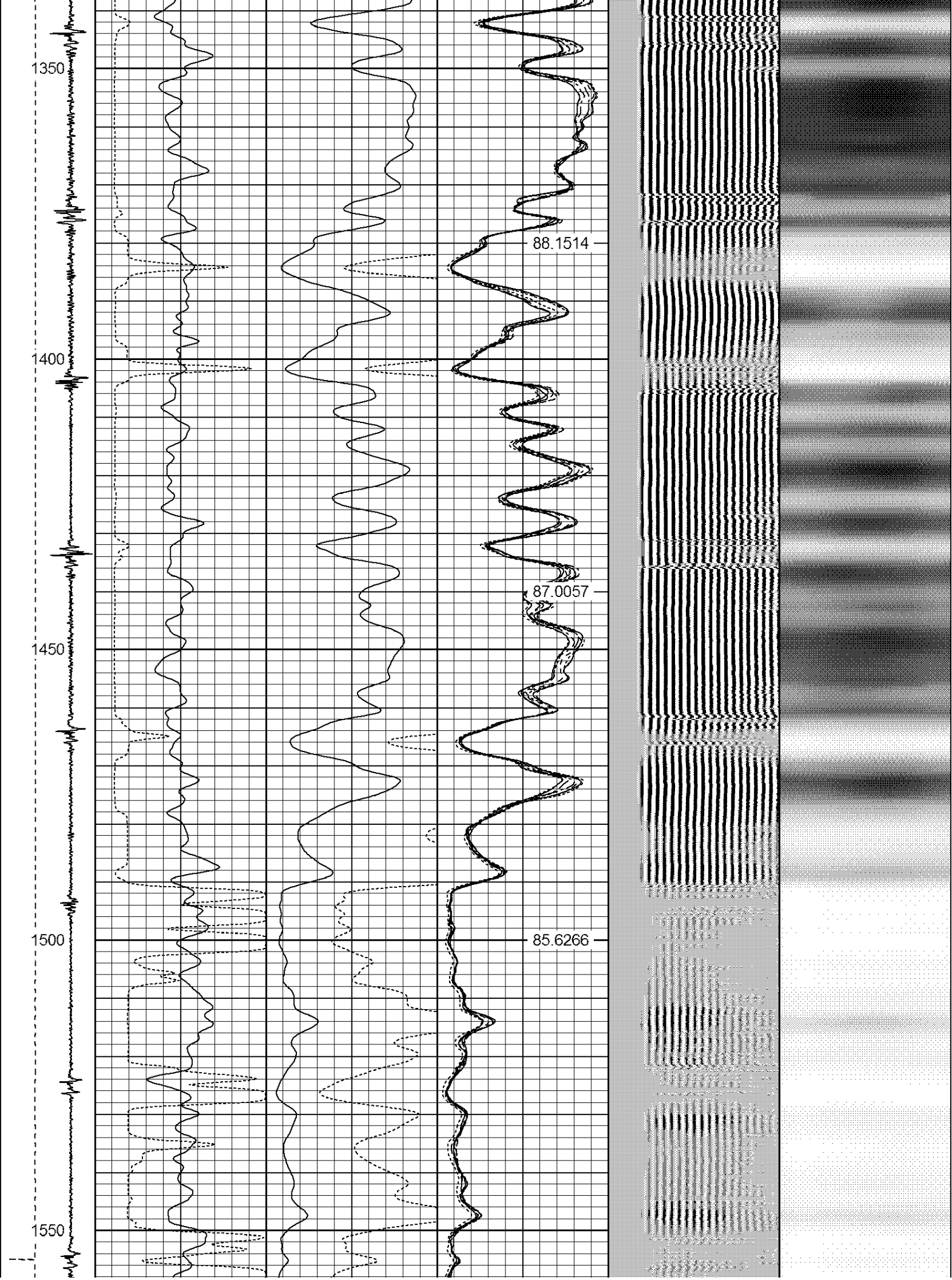
900  
950  
1000  
1050  
1100

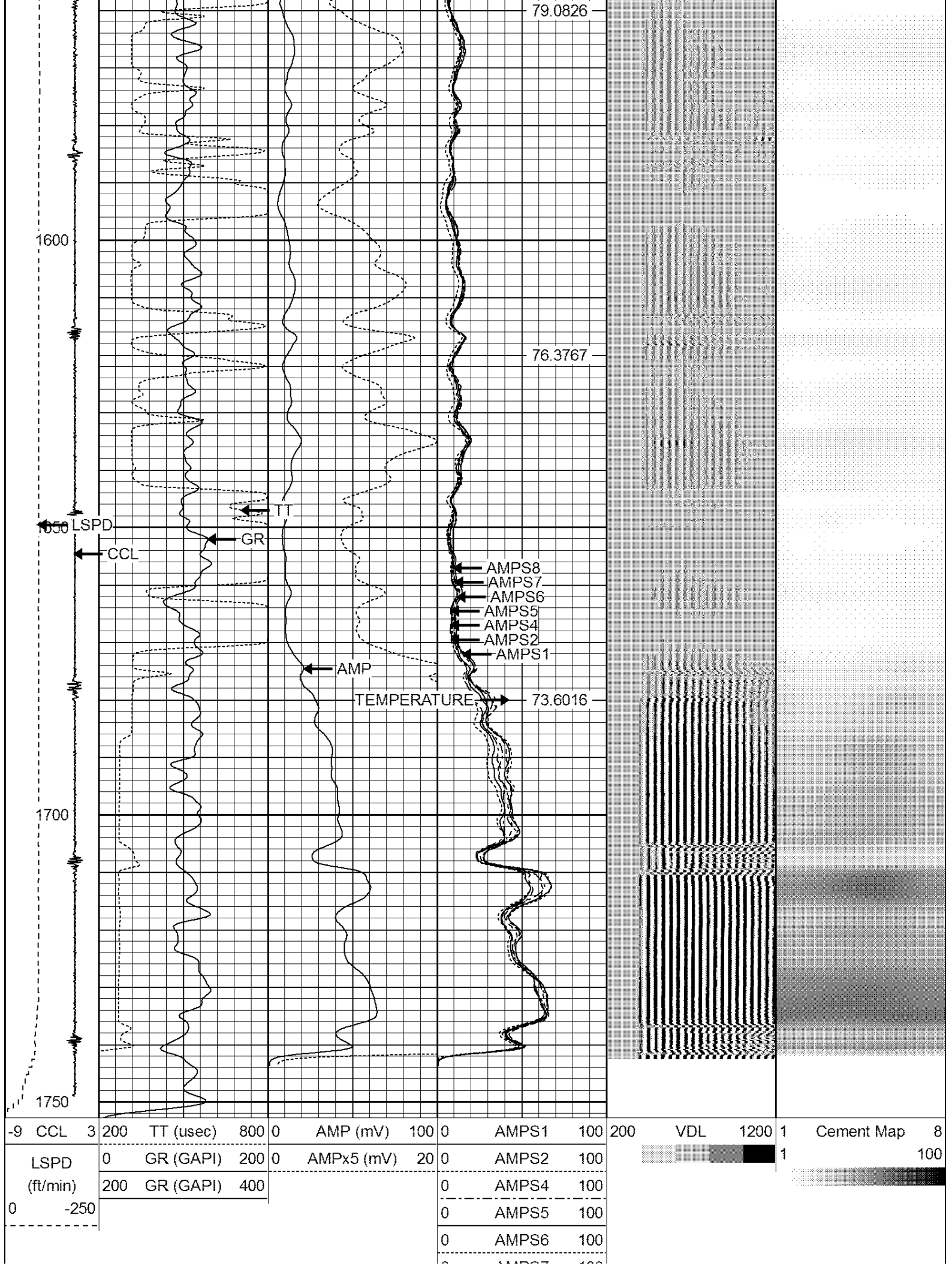






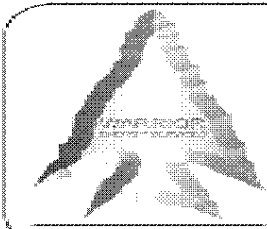






0	AMPS7	100
0	AMPS8	100

IntTemp (degF)
-------------------



**WARRIOR**  
ENERGY SERVICES

© 2010 WARRIOR ENERGY SERVICES, INC. ALL RIGHTS RESERVED.

Company	Kerr McGee Oil & Gas
Well	BERIG UPRR 42-35 #1
Field	Wattenberg
County	Weld
State	CO