

All interpretations are opinions based on inferences from electrical and other measurements and we cannot, and do not guarantee the accuracy or correctness of any interpretations, and we shall not, except in the case of gross or willful negligence on our part, be liable or responsible for any loss, costs, damages or expenses incurred or sustained by anyone resulting from any interpretation made by any of our officers, agents or employees. These interpretations are also subject to our general terms and conditions as set out in our current price schedule.

ENCANA OIL AND GAS (U.S.A.) INC
DALE 4J-20H-O264
WATTENBERG FIELD
WELD COUNTY, COLORADO
05-123-39729

Gamma Ray (GR)

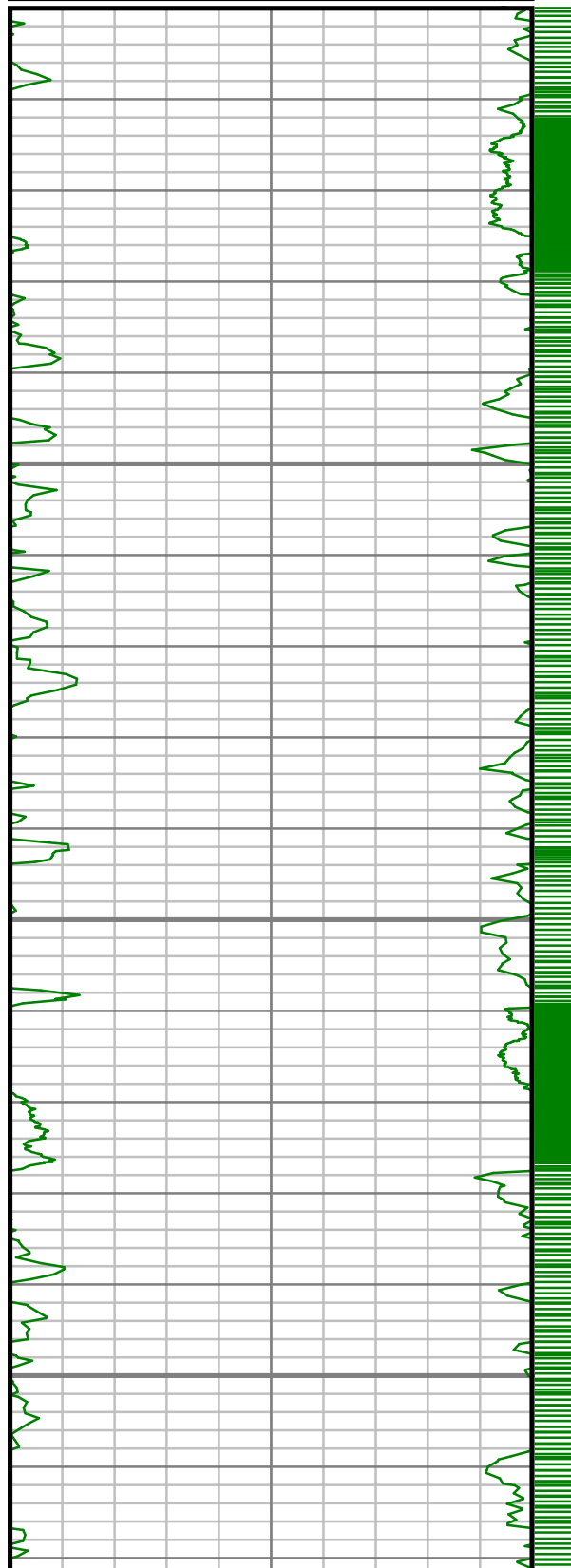
0 Unit = aapi 150

MEASURED DEPTH
1:240 (ft)

Rate of Penetration (ROP)

600 Unit = ft/hr 0

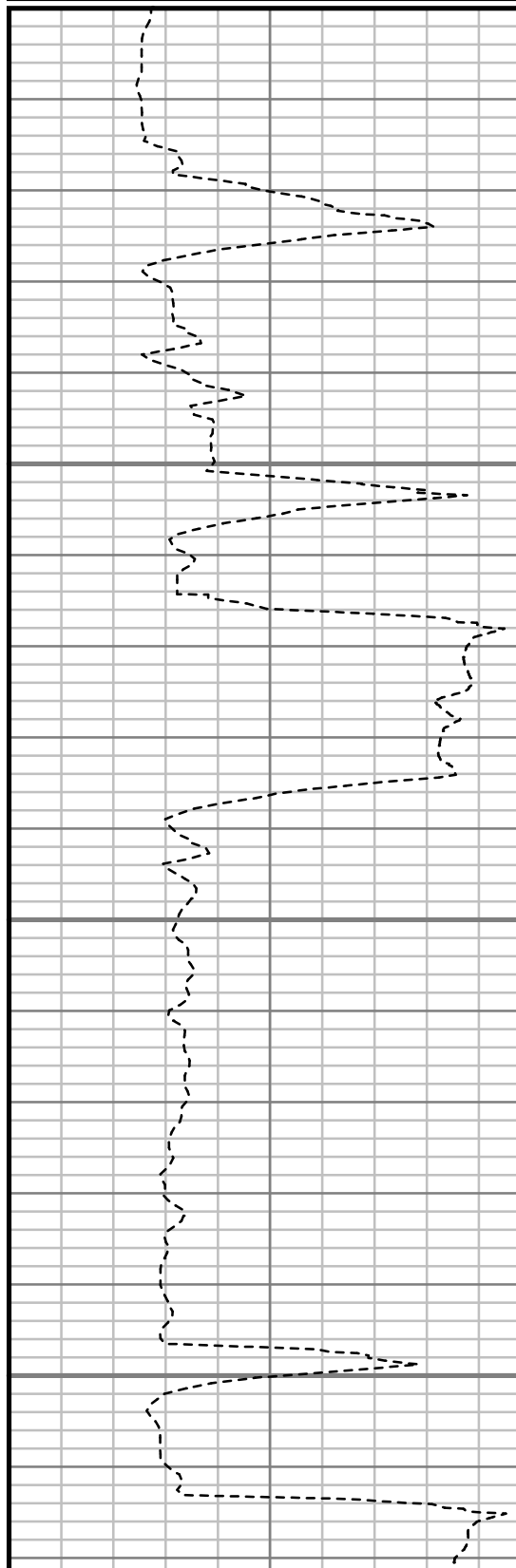
Comments



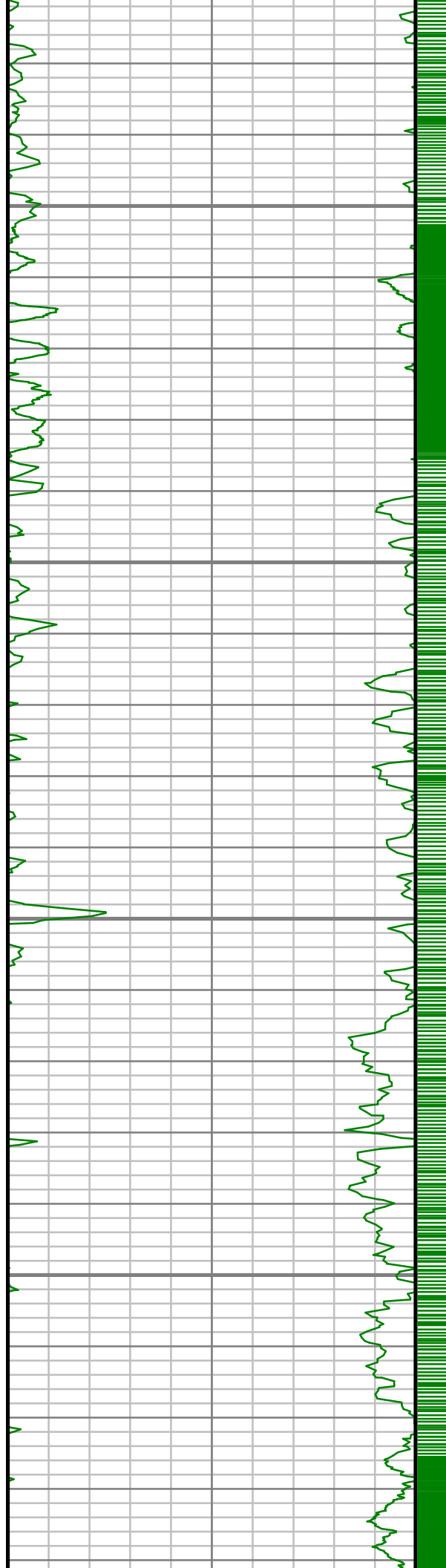
5050

5100

5150



S: 44 MD: 5081.00 ft Inc: 12.51
deg Az: 99.31 deg TVD:
4943.57 ft

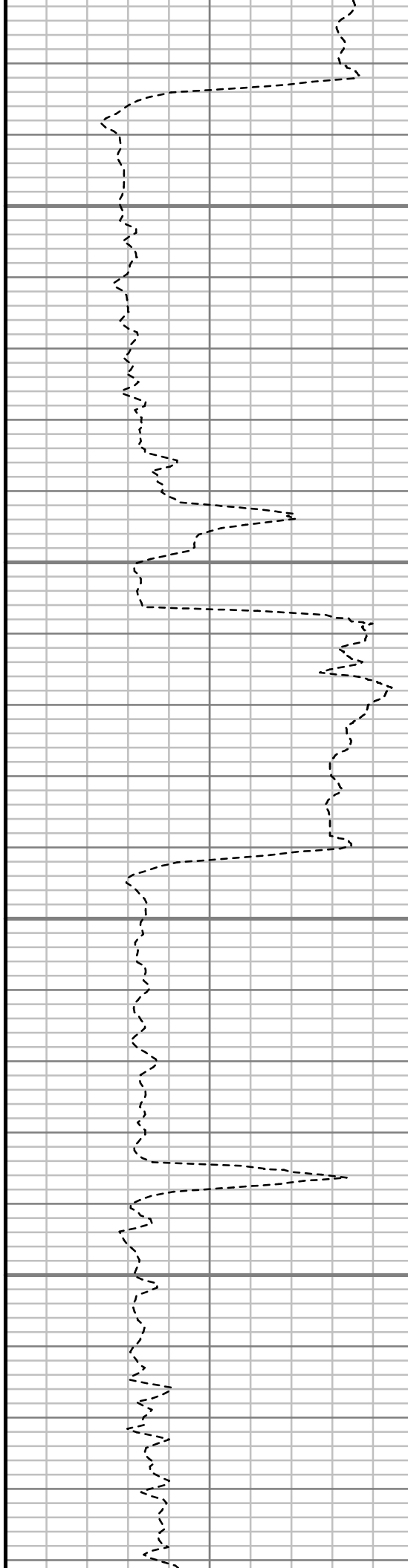


5200

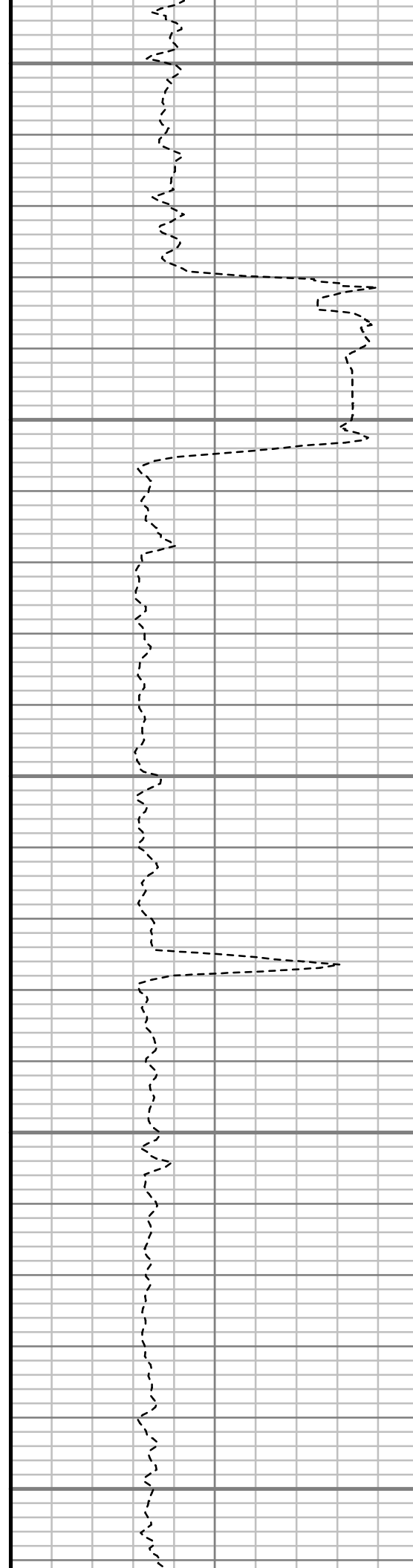
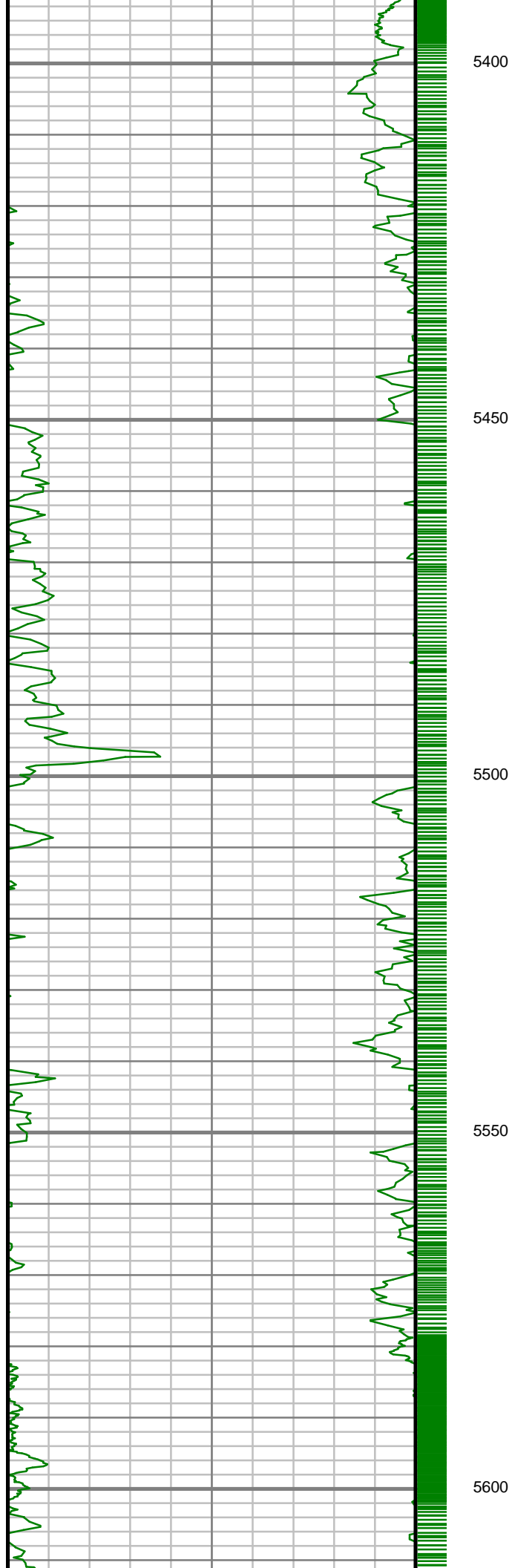
5250

5300

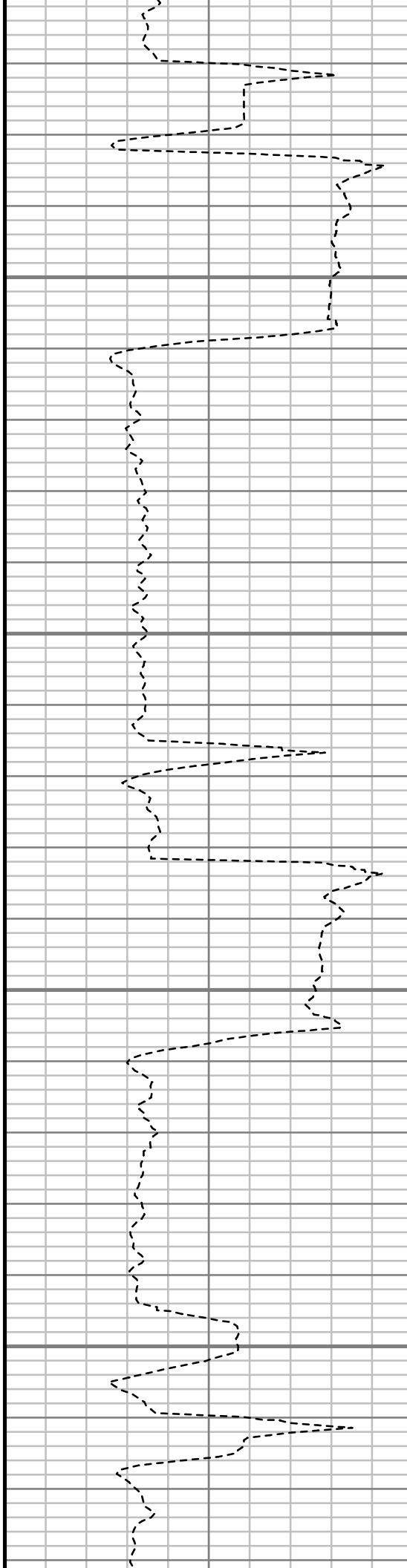
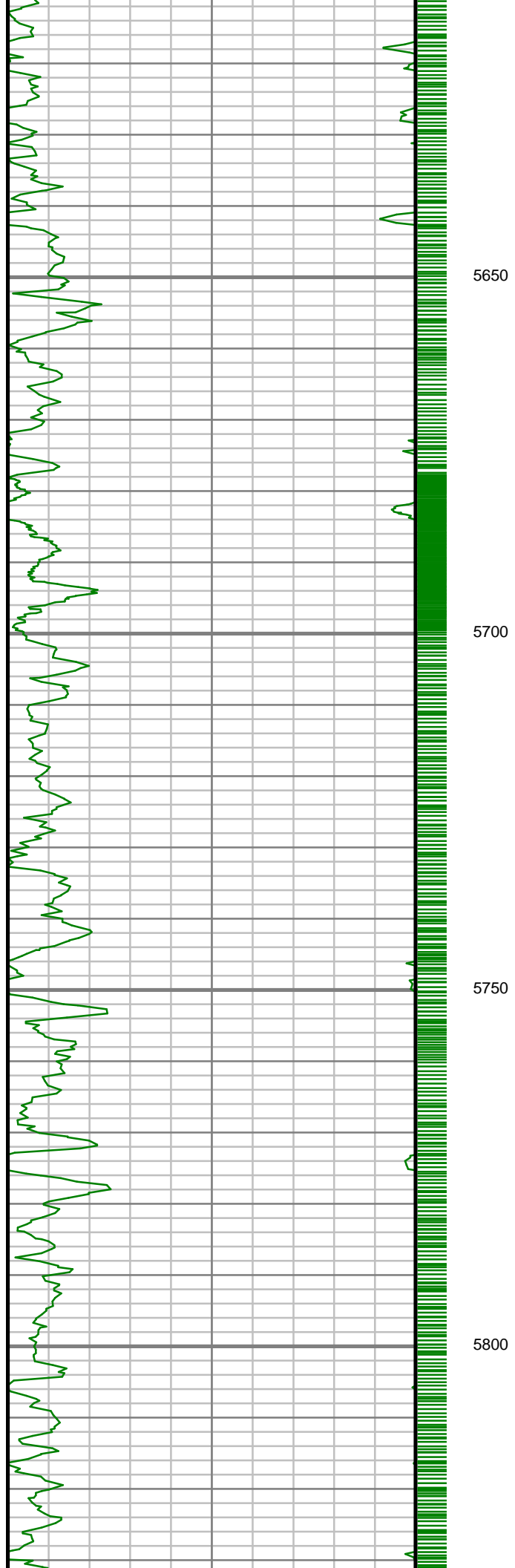
5350



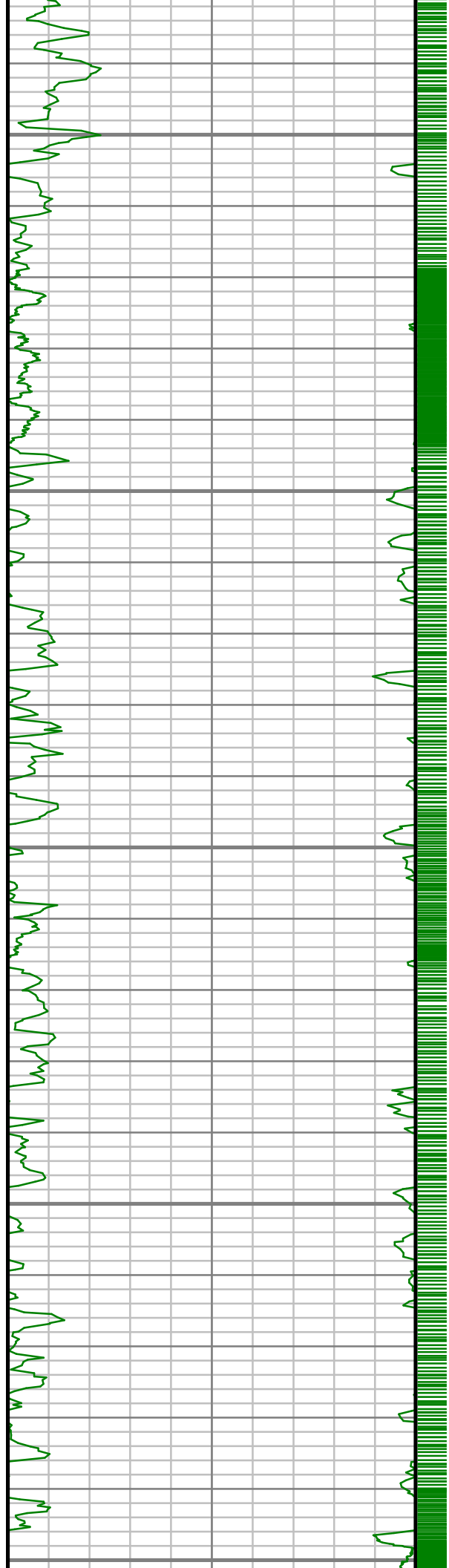
S: 45 MD: 5271.00 ft Inc: 10.87
deg Az: 105.23 deg TVD:
5129.62 ft



S: 46 MD: 5461.00 ft Inc: 12.08
deg Az: 106.61 deg TVD:
5315.82 ft



S: 47 MD: 5652.00 ft Inc: 9.04
deg Az: 102.78 deg TVD:
5503.57 ft



5850

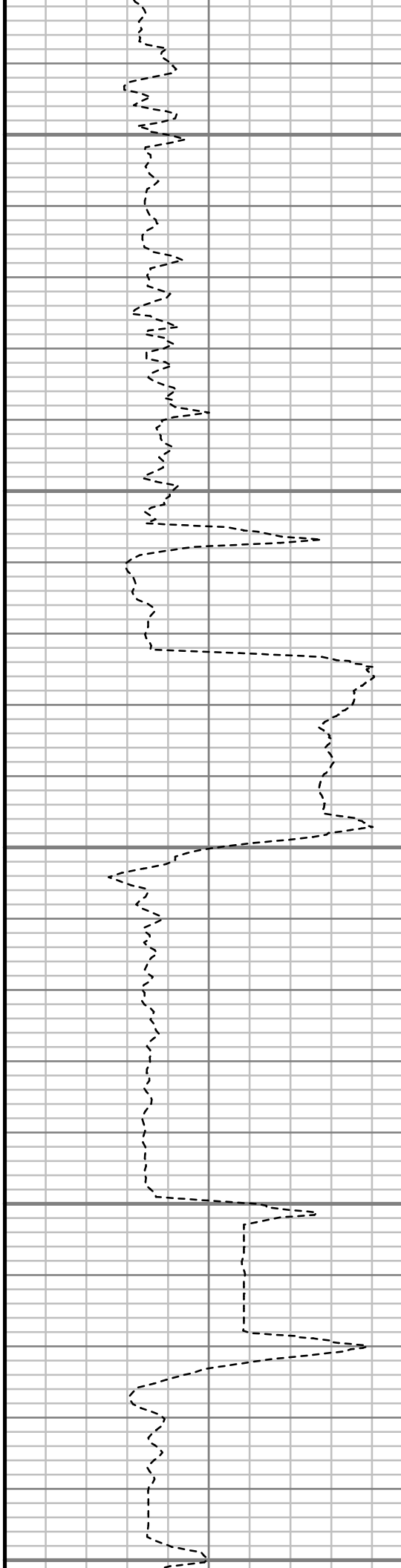
5900

5950

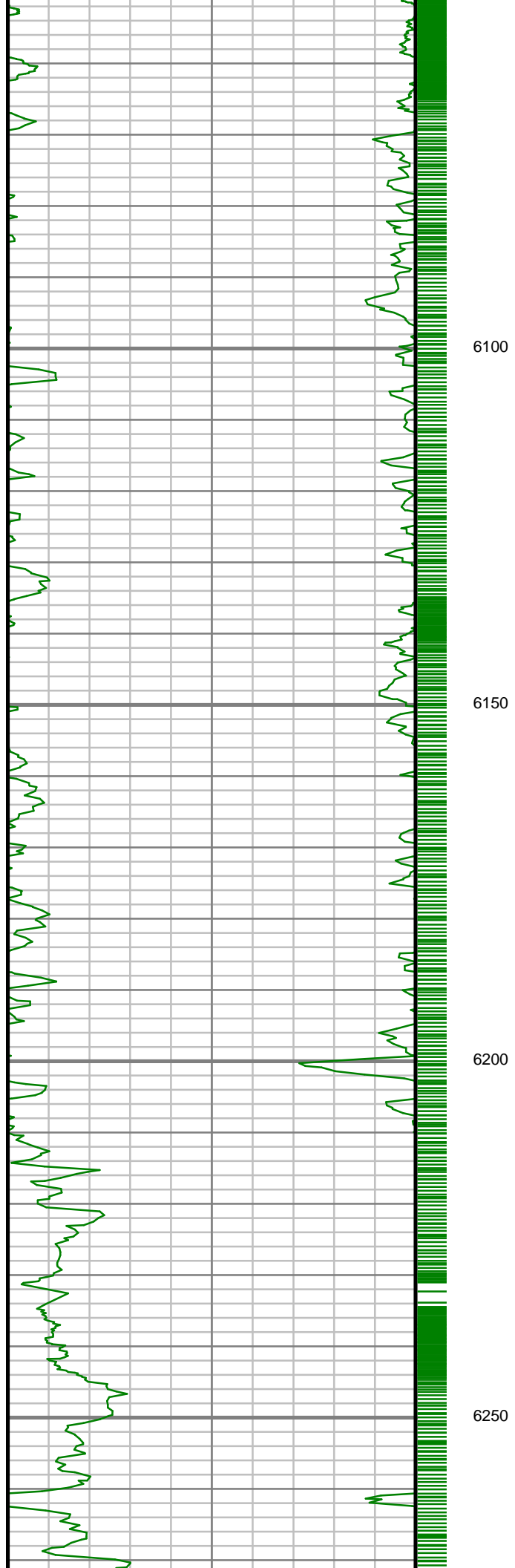
6000

6050

S: 48 MD: 5842.00 ft Inc: 6.50
deg Az: 113.80 deg TVD:
5691.82 ft



S: 49 MD: 6033.00 ft Inc: 5.38
deg Az: 100.78 deg TVD:
5881.80 ft

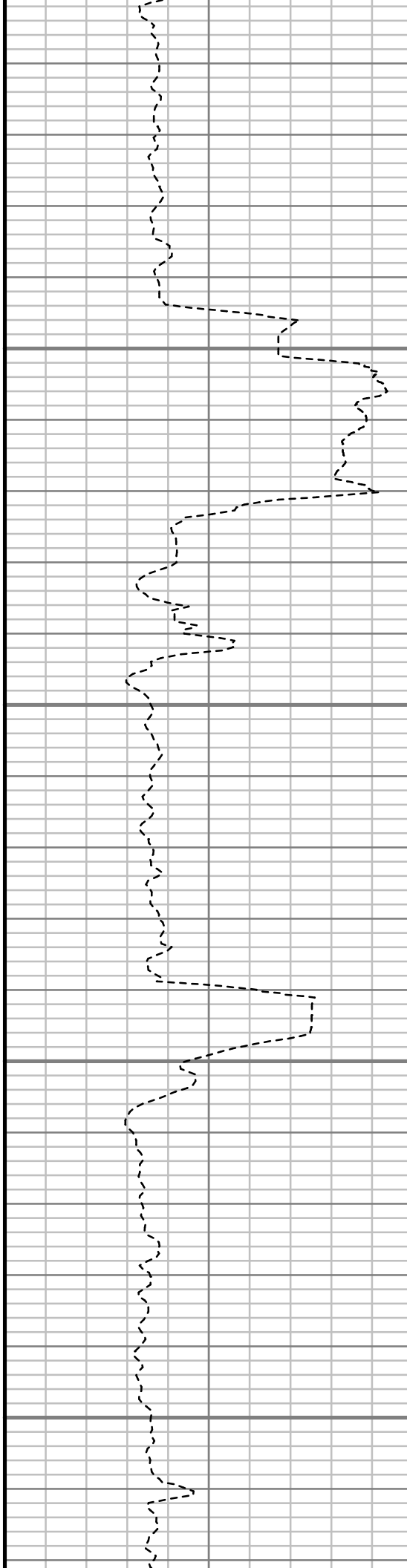


6100

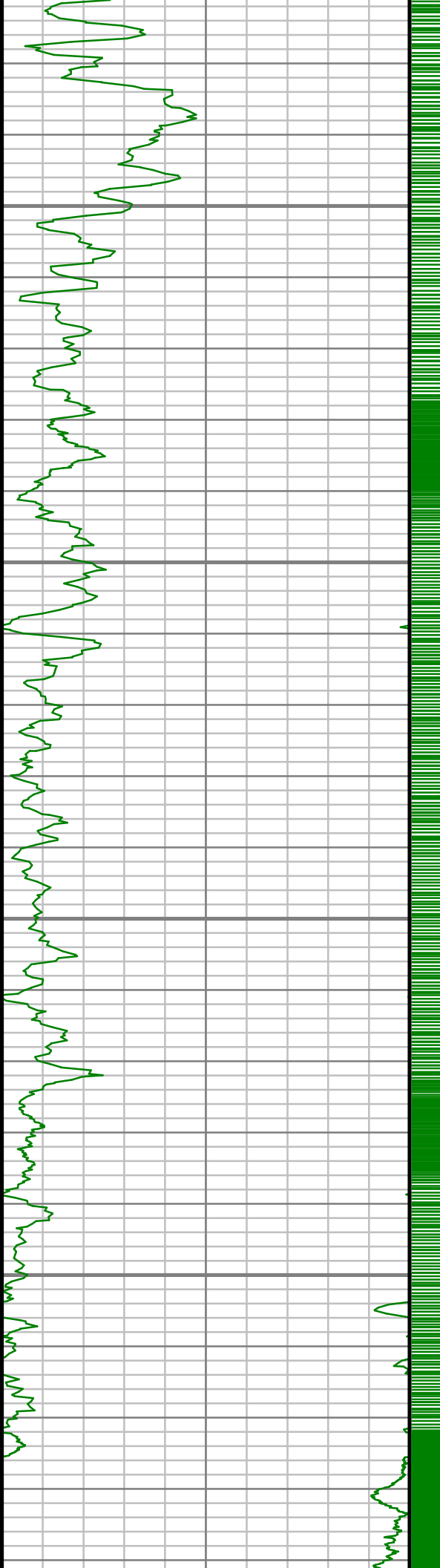
6150

6200

6250



S: 50 MD: 6223.00 ft Inc: 3.93
deg Az: 100.65 deg TVD:
6071.17 ft

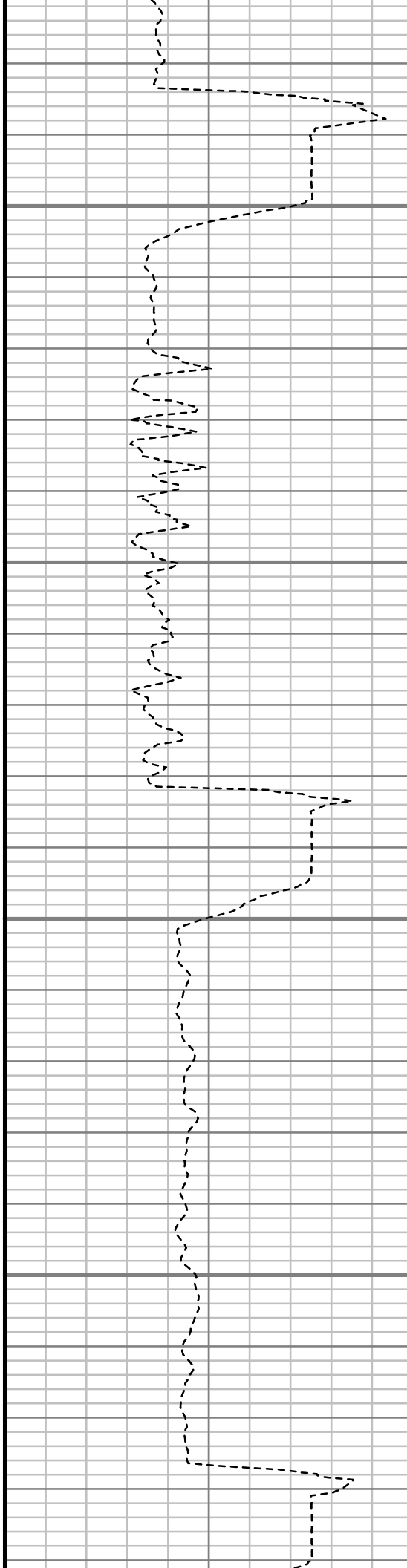


6300

6350

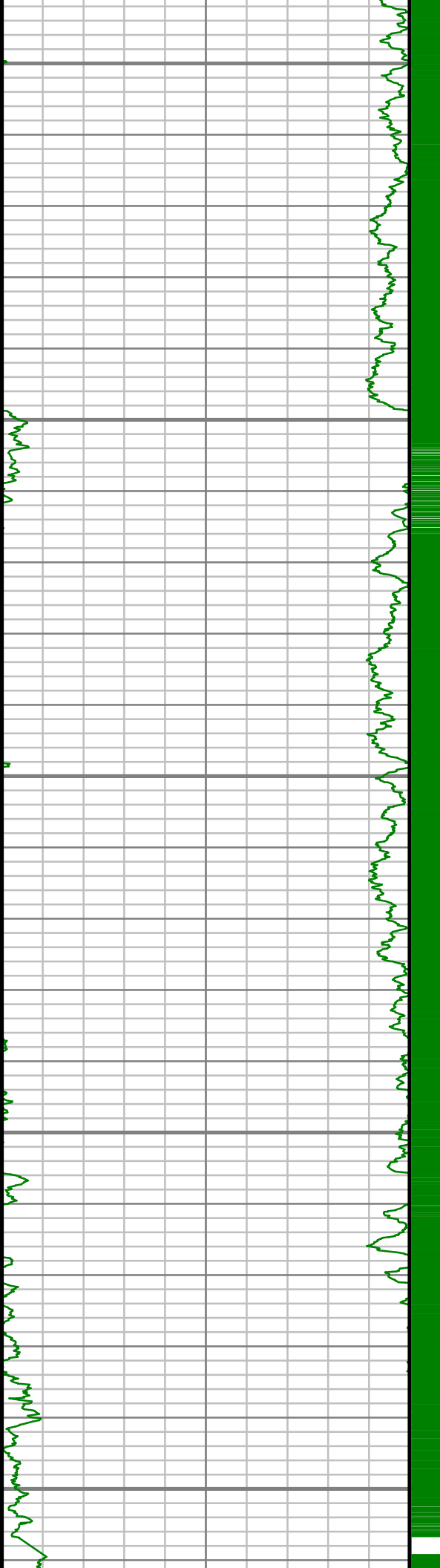
6400

6450



S: 51 MD: 6414.00 ft Inc: 1.83
deg Az: 84.61 deg TVD:
6261.92 ft

S: 52 MD: 6462.00 ft Inc: 1.68
deg Az: 84.08 deg TVD:
6309.90 ft



6500

6550

6600

6650

6700

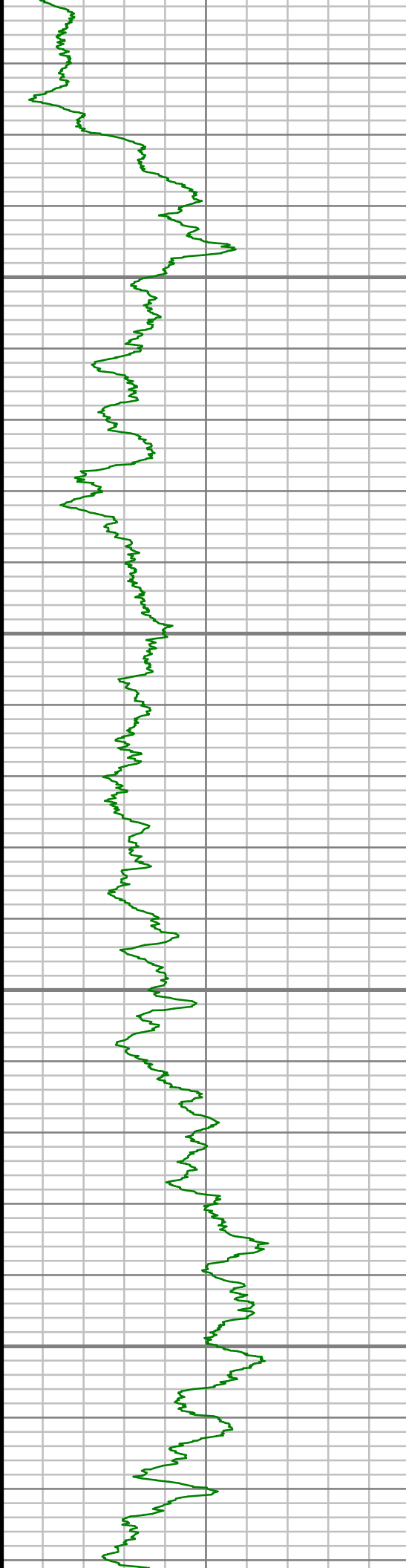
S: 53 MD: 6509.00 ft Inc: 2.03
deg Az: 77.98 deg TVD:
6356.88 ft

S: 54 MD: 6556.00 ft Inc: 3.43
deg Az: 23.97 deg TVD:
6403.83 ft

S: 55 MD: 6605.00 ft Inc: 6.12
deg Az: 11.67 deg TVD:
6452.65 ft

S: 56 MD: 6652.00 ft Inc: 8.46
deg Az: 6.49 deg TVD: 6499.27
ft

S: 57 MD: 6700.00 ft Inc: 10.95
deg Az: 4.63 deg TVD: 6546.58
ft

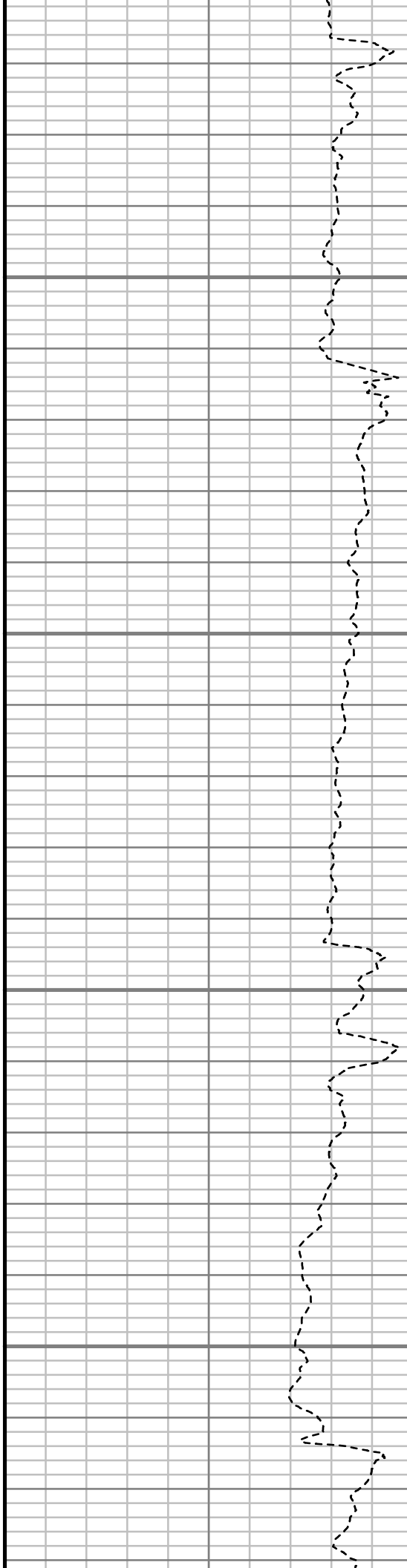


6750

6800

6850

6900

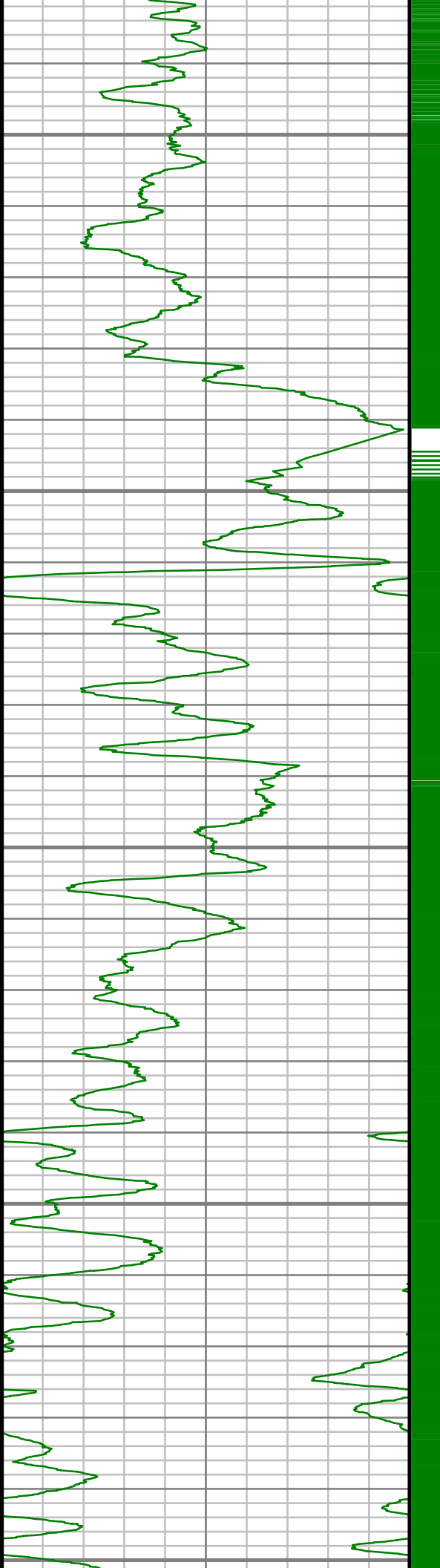


S: 58 MD: 6747.00 ft Inc: 13.93
deg Az: 1.77 deg TVD: 6592.47
ft

S: 59 MD: 6795.00 ft Inc: 17.58
deg Az: 1.00 deg TVD: 6638.66
ft

S: 60 MD: 6842.00 ft Inc: 22.26
deg Az: 1.42 deg TVD: 6682.84
ft

S: 61 MD: 6890.00 ft Inc: 25.98
deg Az: 2.59 deg TVD: 6726.64
ft



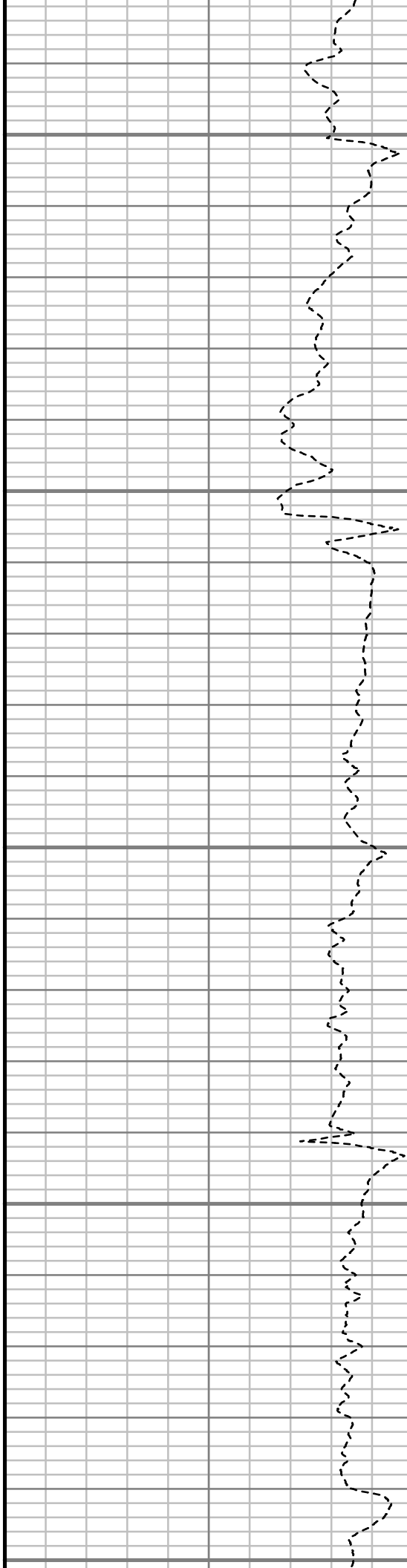
6950

7000

7050

7100

7150



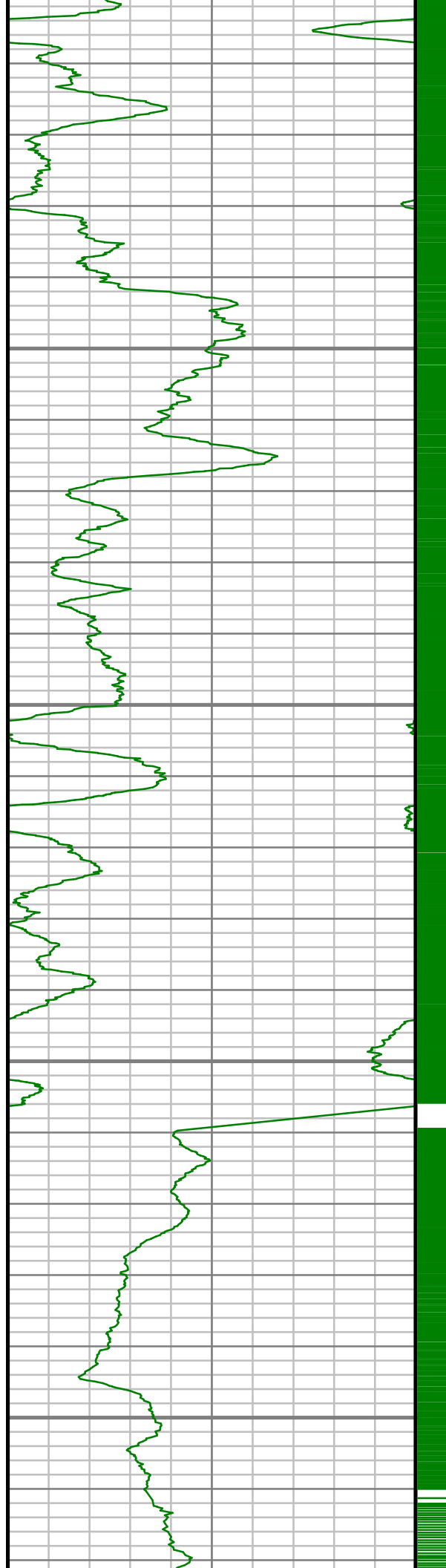
S: 62 MD: 6937.00 ft Inc: 31.02
deg Az: 3.27 deg TVD: 6767.93
ft

S: 63 MD: 6985.00 ft Inc: 35.44
deg Az: 2.11 deg TVD: 6808.08
ft

S: 64 MD: 7034.00 ft Inc: 39.98
deg Az: 1.67 deg TVD: 6846.83
ft

S: 65 MD: 7081.00 ft Inc: 46.55
deg Az: 1.89 deg TVD: 6881.03
ft

S: 66 MD: 7128.00 ft Inc: 54.09
deg Az: 2.49 deg TVD: 6911.02
ft

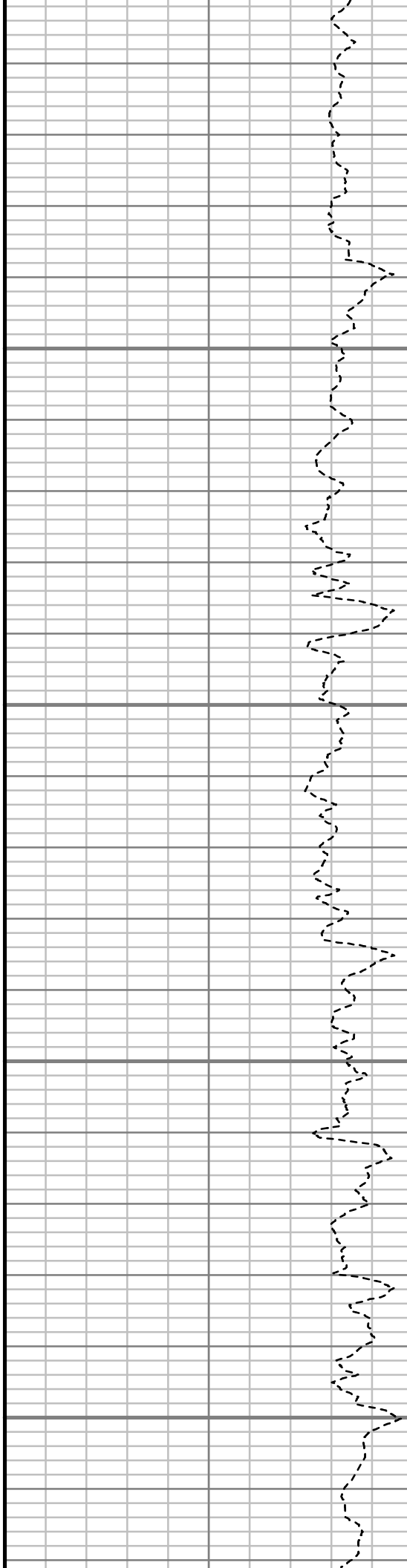


7200

7250

7300

7350

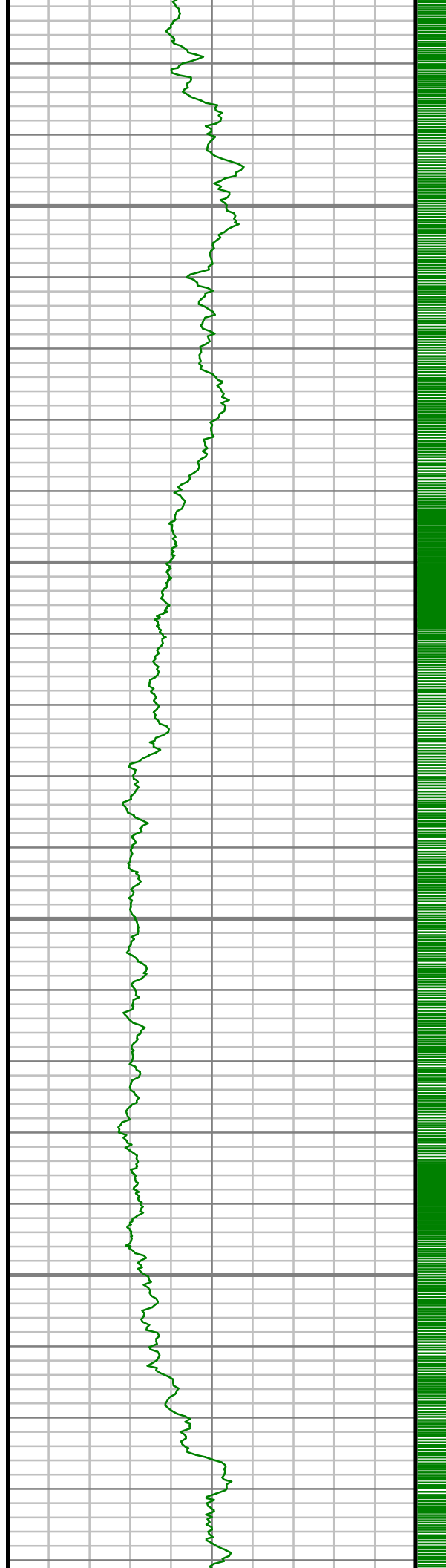


S: 67 MD: 7176.00 ft Inc: 61.56
deg Az: 1.85 deg TVD: 6936.57
ft

S: 68 MD: 7223.00 ft Inc: 69.22
deg Az: 0.13 deg TVD: 6956.13
ft

S: 69 MD: 7271.00 ft Inc: 77.11
deg Az: 358.70 deg TVD:
6970.02 ft

S: 70 MD: 7295.00 ft Inc: 81.18
deg Az: 359.11 deg TVD:
6974.54 ft

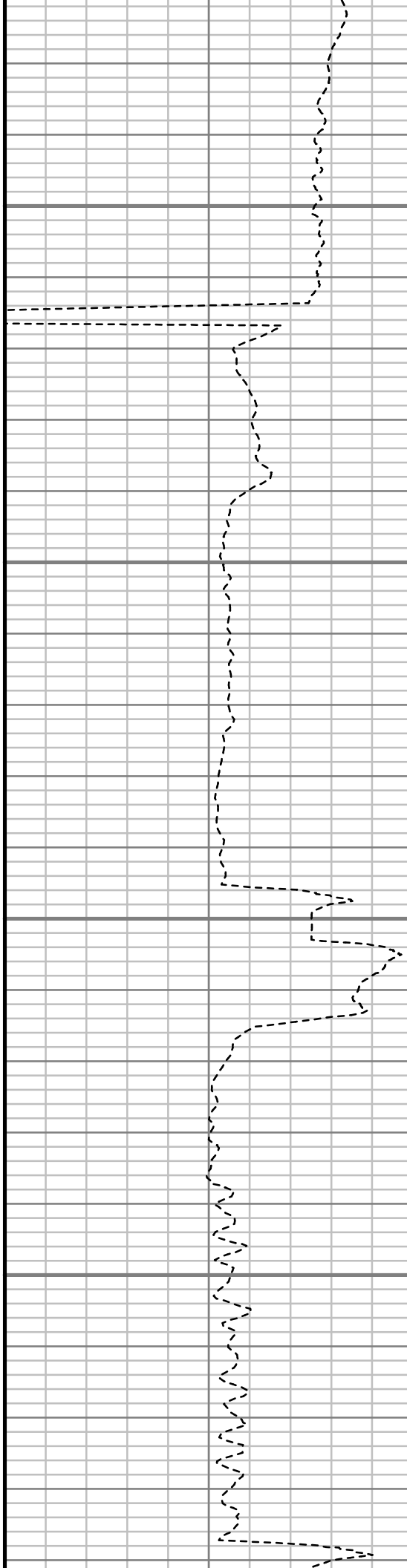


7400

7450

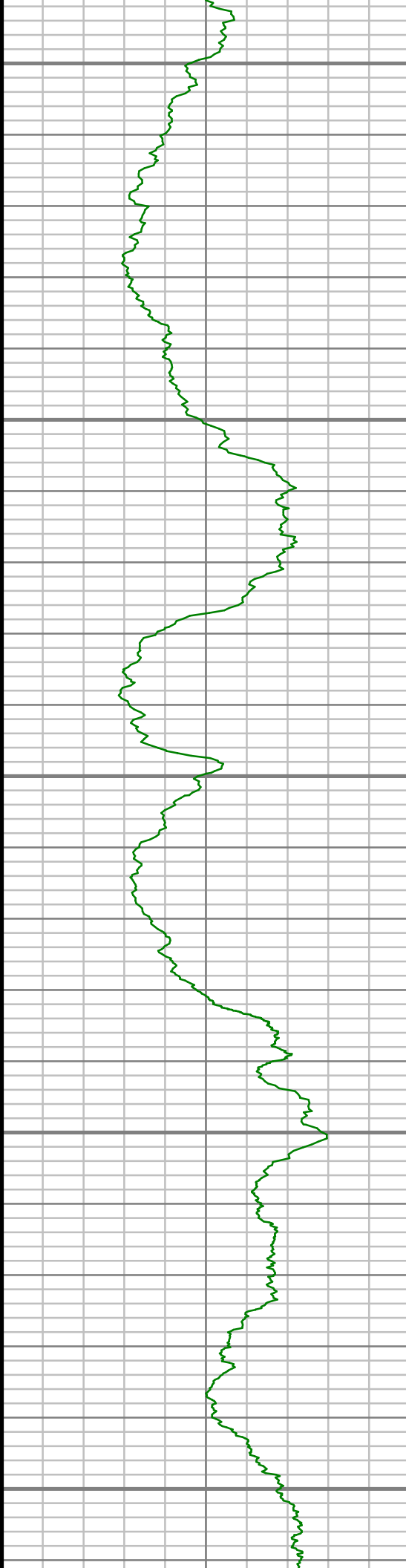
7500

7550



S: 71 MD: 7433.00 ft Inc: 88.92
deg Az: 0.58 deg TVD: 6986.43
ft

S: 72 MD: 7524.00 ft Inc: 90.40
deg Az: 0.45 deg TVD: 6986.97
ft



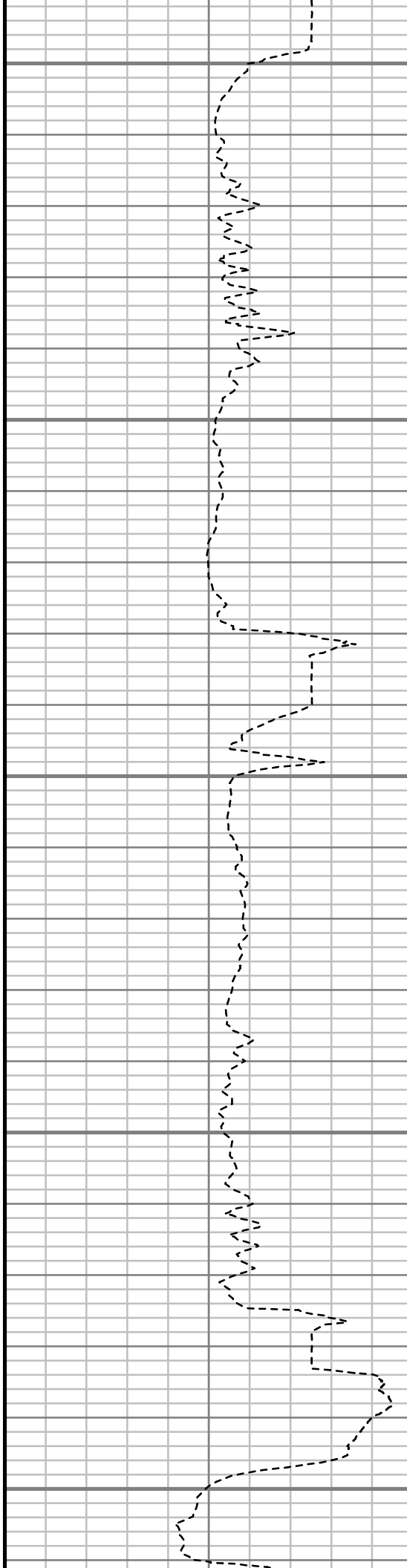
7600

7650

7700

7750

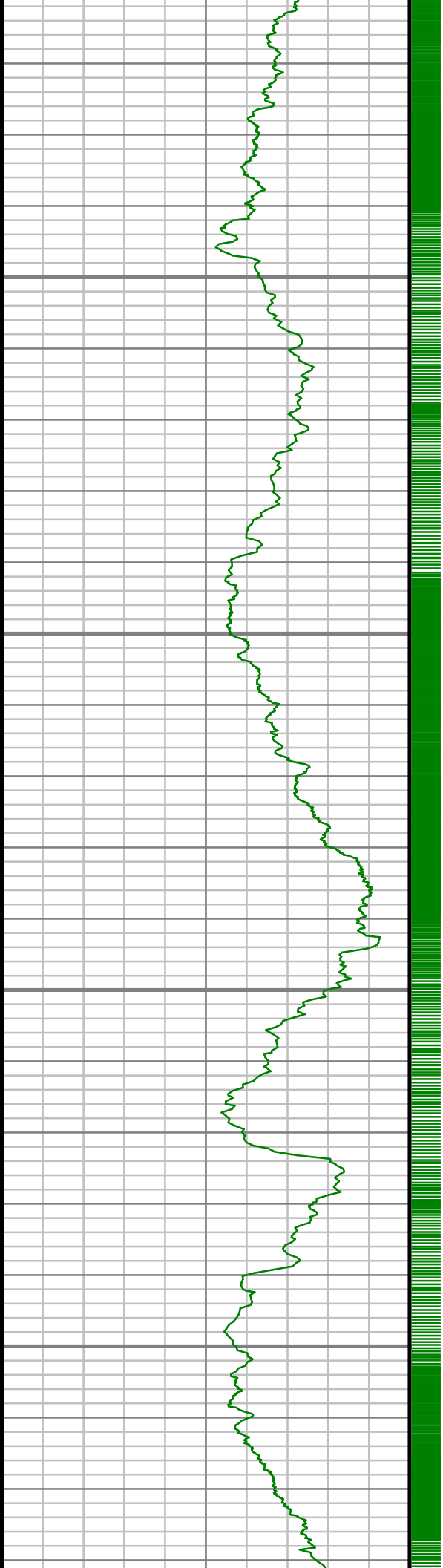
7800



S: 73 MD: 7616.00 ft Inc: 91.01
deg Az: 359.13 deg TVD:
6985.83 ft

S: 74 MD: 7711.00 ft Inc: 91.98
deg Az: 359.62 deg TVD:
6983.36 ft

S: 75 MD: 7806.00 ft Inc: 92.42
deg Az: 359.38 deg TVD:

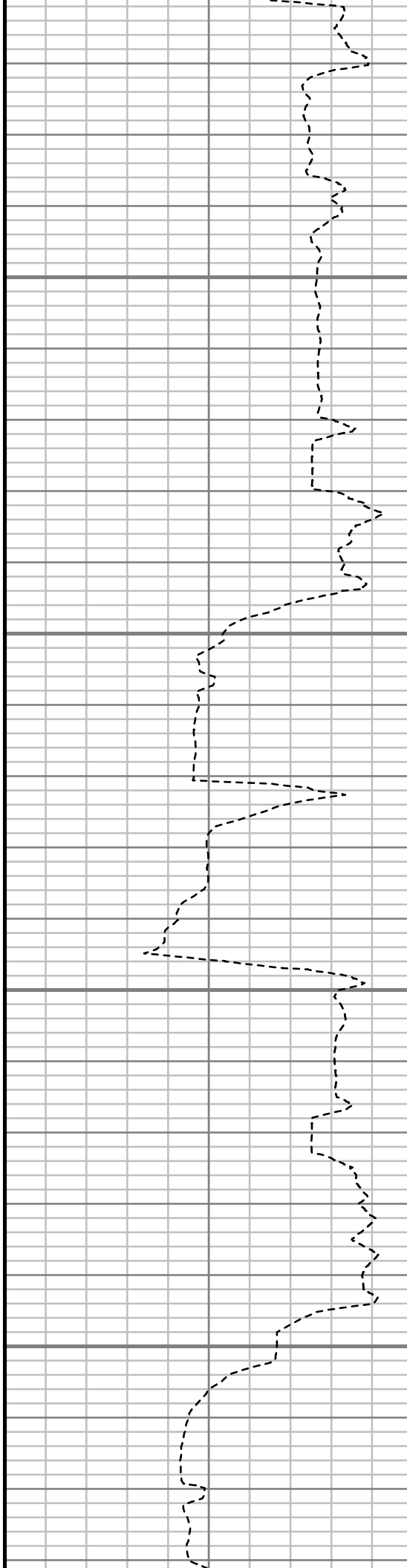


7850

7900

7950

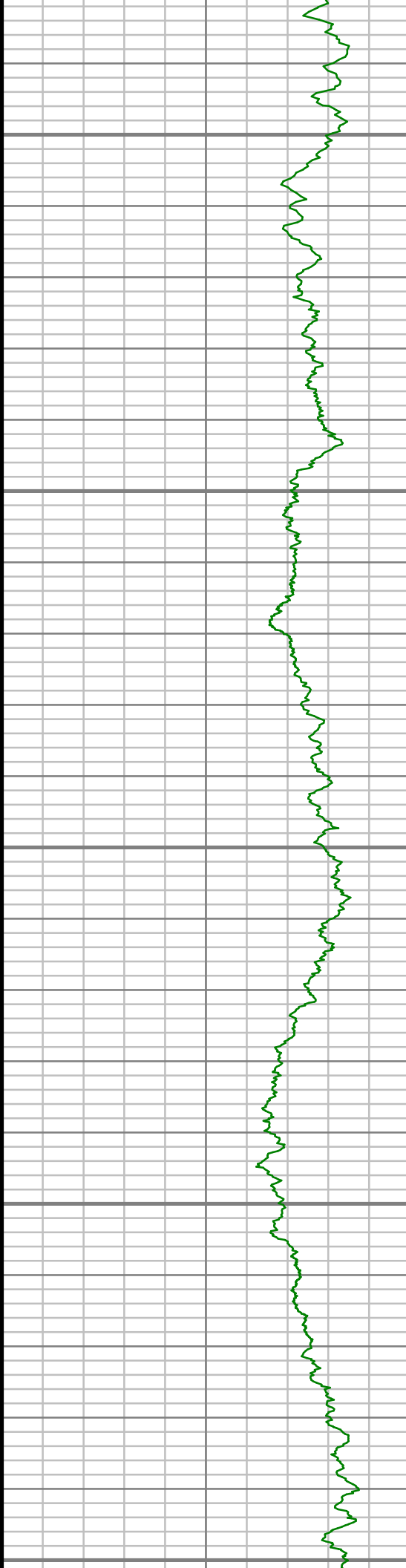
8000



6979.71 ft

S: 76 MD: 7901.00 ft Inc: 91.98
deg Az: 358.51 deg TVD:
6976.06 ft

S: 77 MD: 7996.00 ft Inc: 90.77
deg Az: 358.54 deg TVD:
6973.77 ft



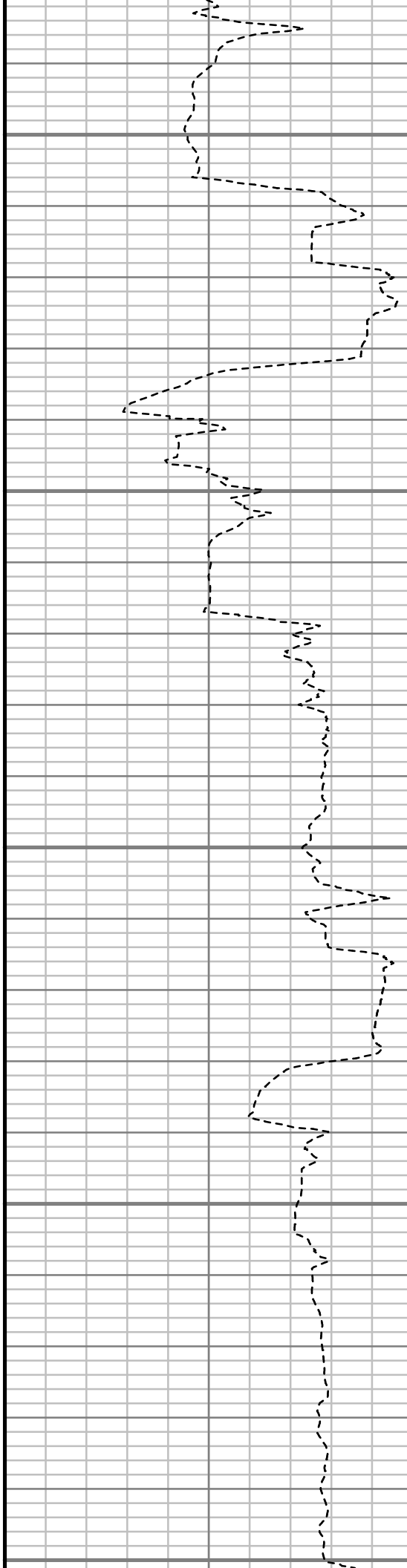
8050

8100

8150

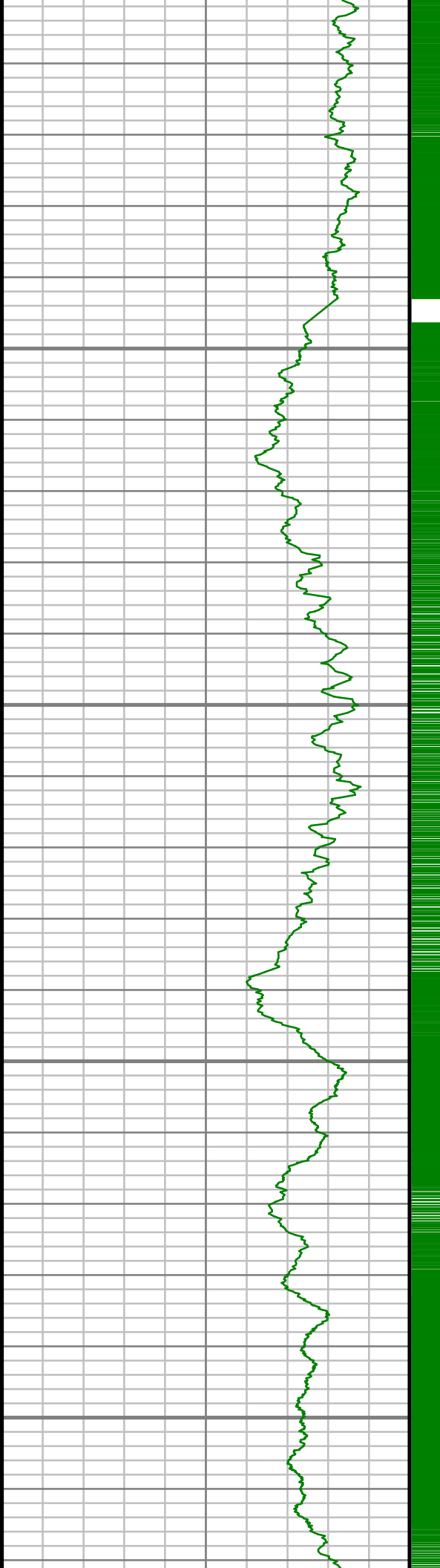
8200

8250



S: 78 MD: 8091.00 ft Inc: 90.27
deg Az: 358.75 deg TVD:
6972.91 ft

S: 79 MD: 8186.00 ft Inc: 89.56
deg Az: 358.73 deg TVD:
6973.05 ft

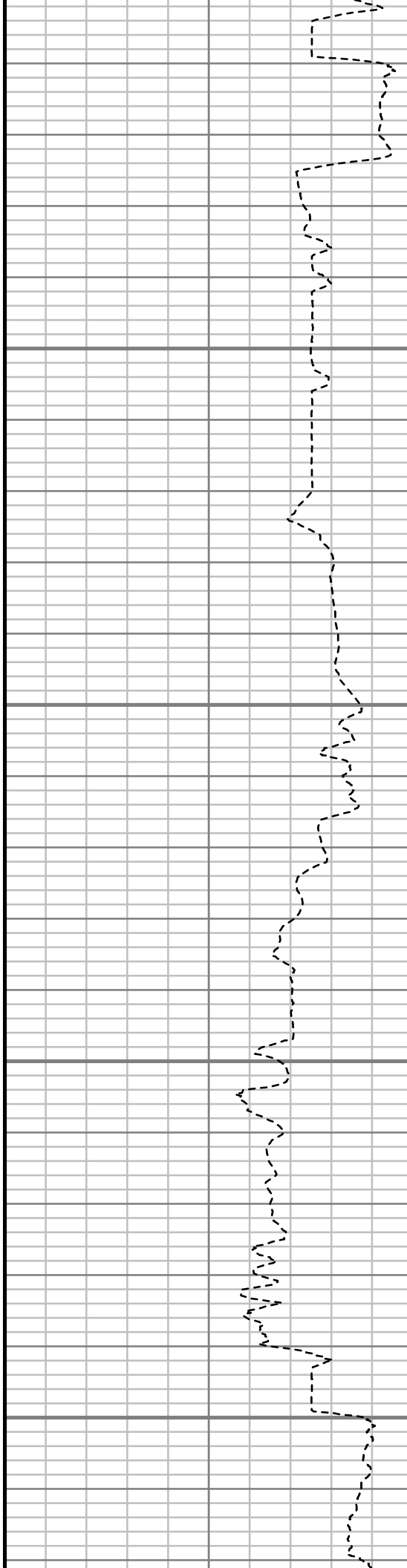


8300

8350

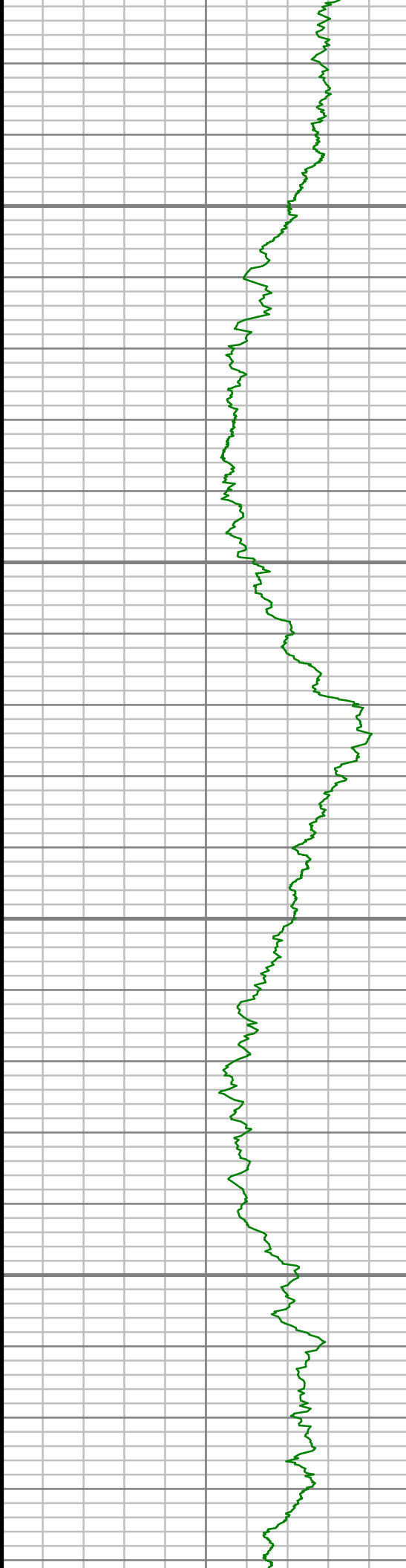
8400

8450



S: 80 MD: 8280.00 ft Inc: 88.39
deg Az: 357.60 deg TVD:
6974.73 ft

S: 81 MD: 8377.00 ft Inc: 87.95
deg Az: 358.77 deg TVD:
6977.83 ft

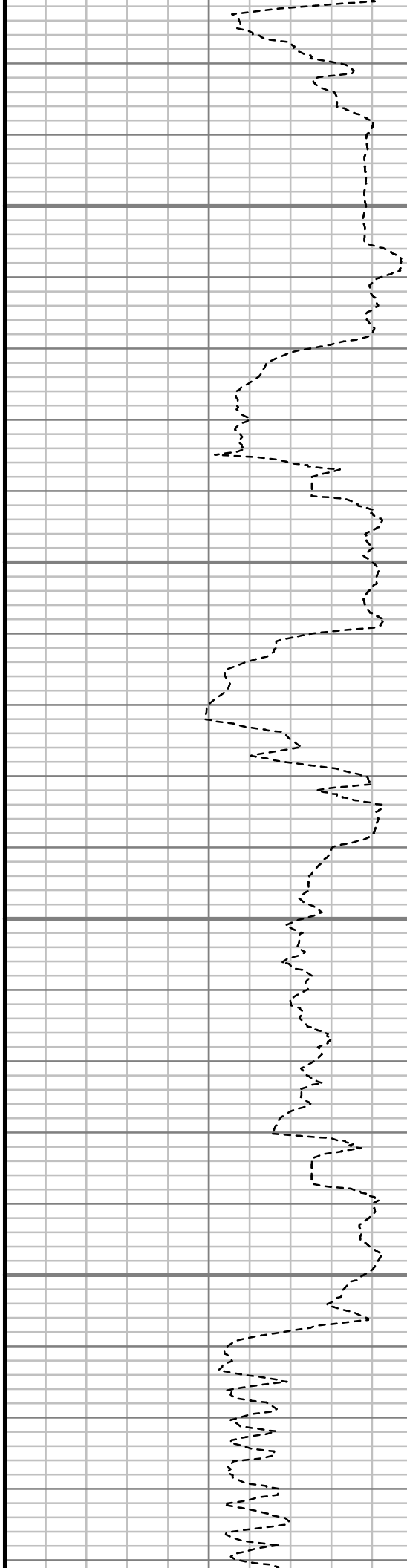


8500

8550

8600

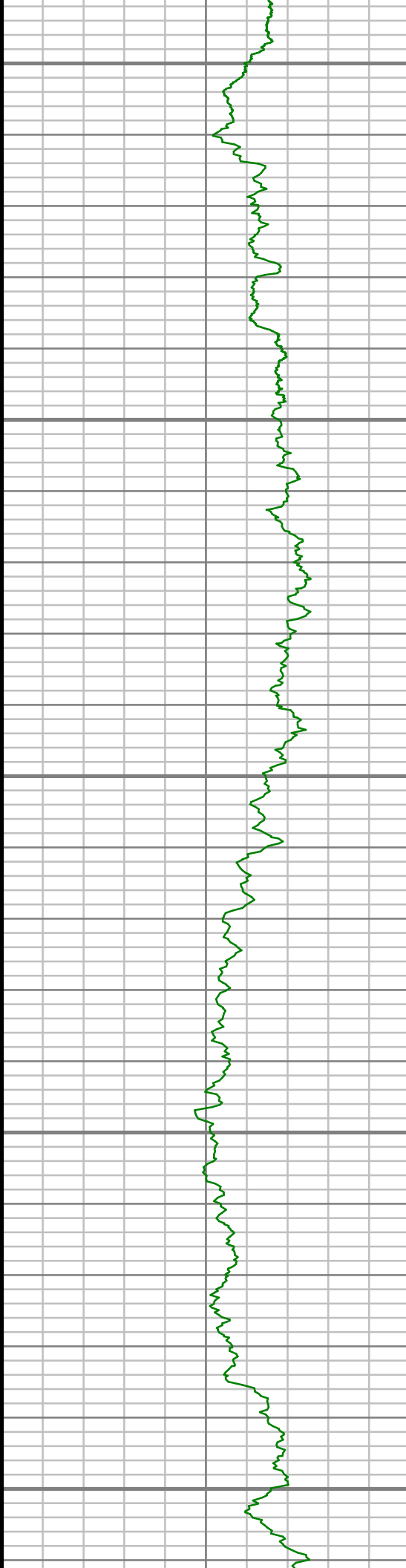
8650



S: 82 MD: 8472.00 ft Inc: 87.65
deg Az: 358.73 deg TVD:
6981.48 ft

S: 83 MD: 8567.00 ft Inc: 89.36
deg Az: 358.84 deg TVD:
6983.96 ft

S: 84 MD: 8661.00 ft Inc: 88.63
deg Az: 358.91 deg TVD:
6985.61 ft



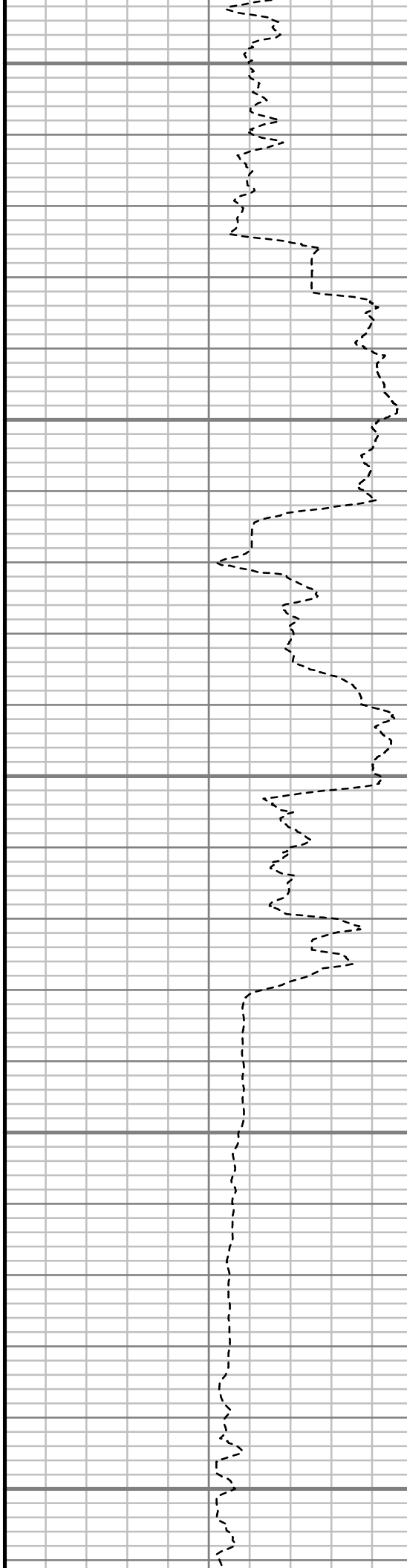
8700

8750

8800

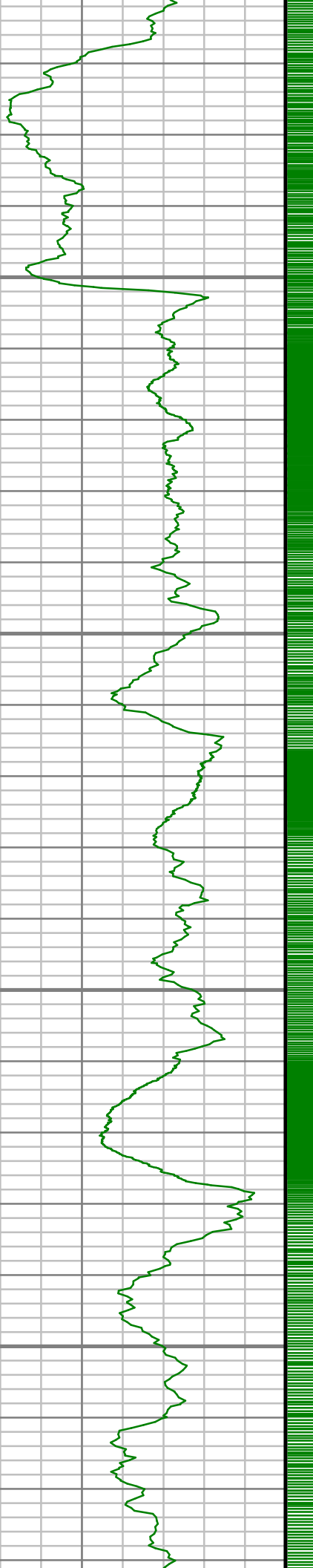
8850

8900



S: 85 MD: 8756.00 ft Inc: 89.63
deg Az: 359.64 deg TVD:
6987.06 ft

S: 86 MD: 8851.00 ft Inc: 90.57
deg Az: 359.05 deg TVD:
6986.89 ft

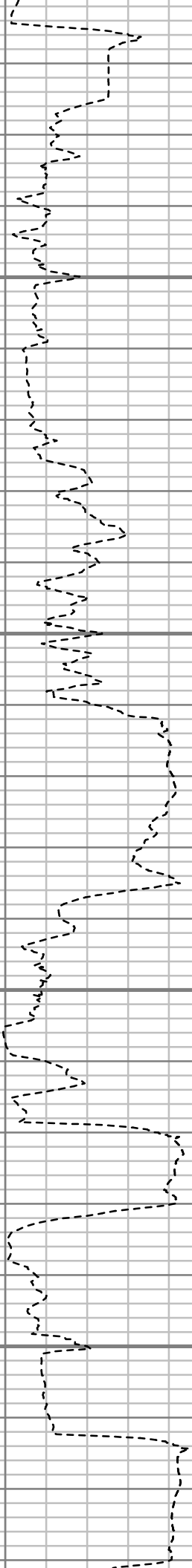


8950

9000

9050

9100



S: 87 MD: 8945.00 ft Inc: 88.35
deg Az: 357.92 deg TVD:
6987.78 ft

S: 88 MD: 9040.00 ft Inc: 88.29
deg Az: 358.89 deg TVD:
6990.56 ft



9150

9200

9250

9300

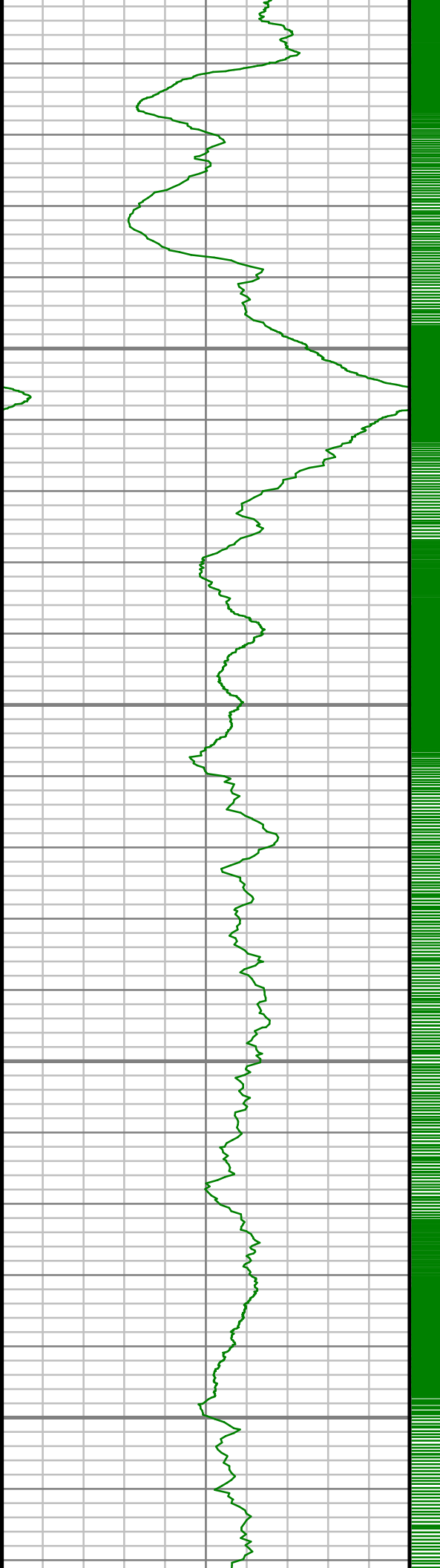
9350



S: 89 MD: 9134.00 ft Inc: 88.99
deg Az: 0.69 deg TVD: 6992.79
ft

S: 90 MD: 9229.00 ft Inc: 88.02
deg Az: 0.98 deg TVD: 6995.26
ft

S: 91 MD: 9324.00 ft Inc: 87.38
deg Az: 359.96 deg TVD:
6999.07 ft

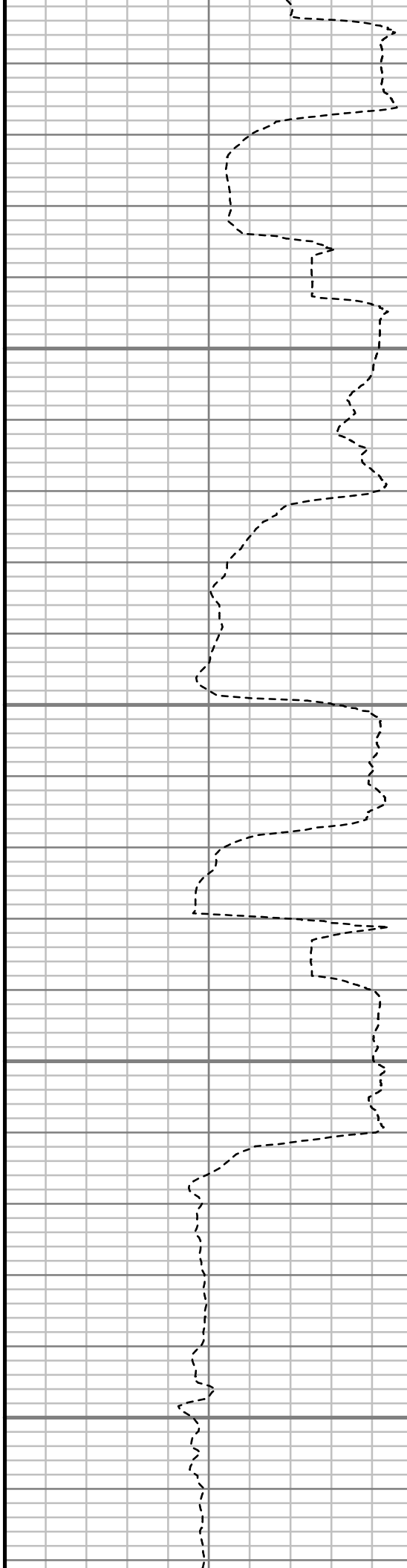


9400

9450

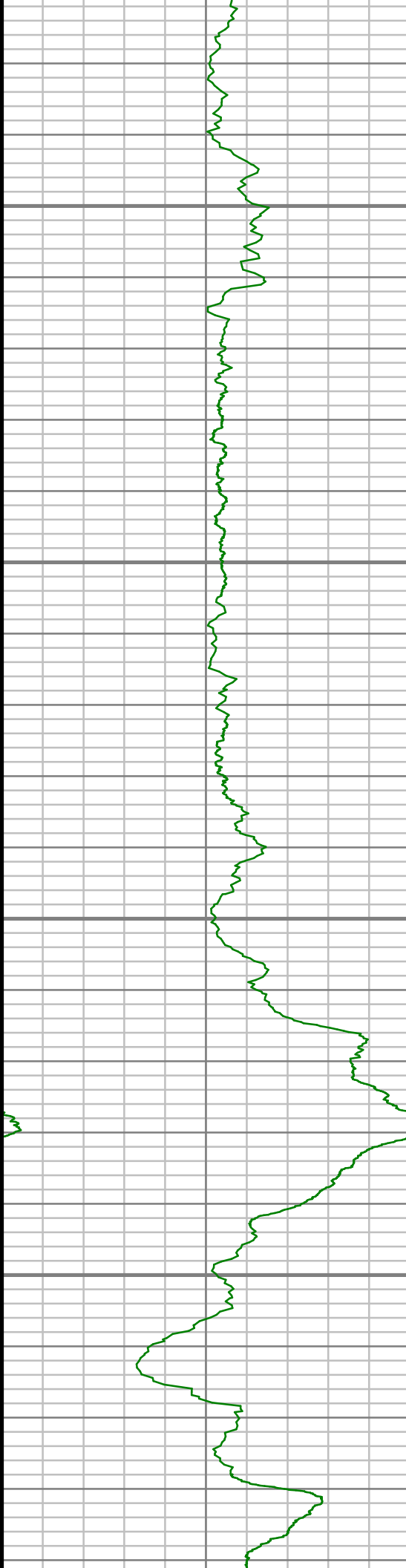
9500

9550



S: 92 MD: 9419.00 ft Inc: 89.26
deg Az: 0.28 deg TVD: 7001.86
ft

S: 93 MD: 9514.00 ft Inc: 92.39
deg Az: 357.50 deg TVD:
7000.49 ft

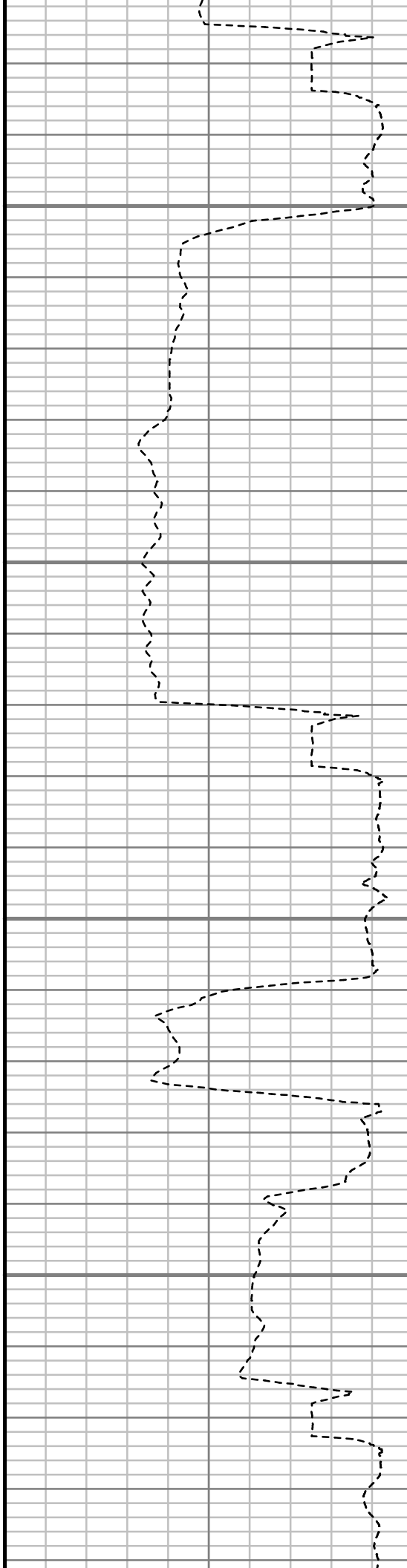


9600

9650

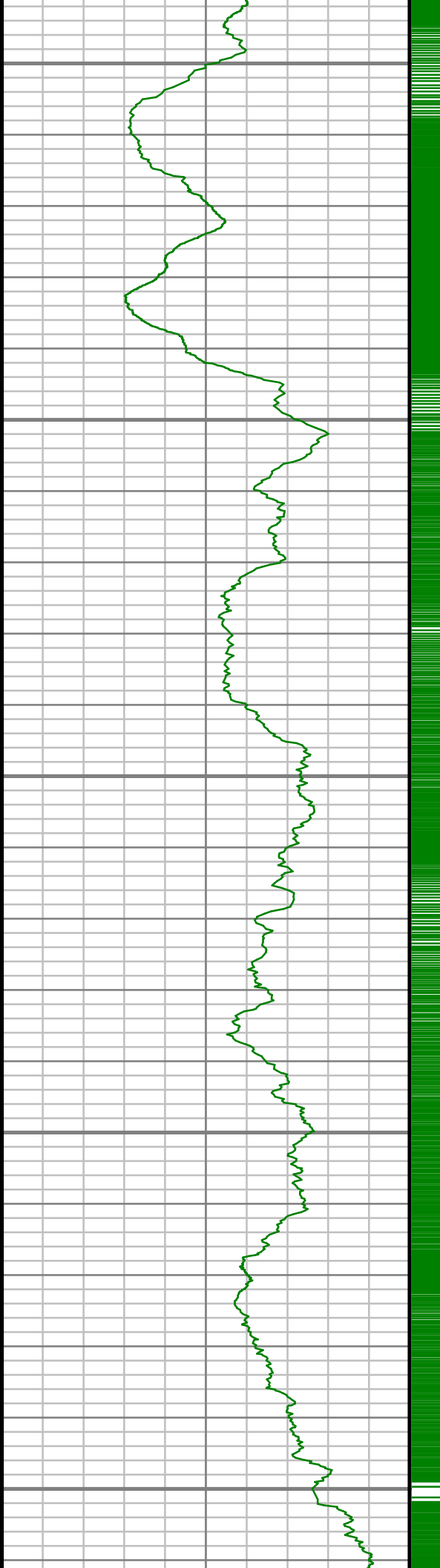
9700

9750



S: 94 MD: 9609.00 ft Inc: 89.97
deg Az: 357.34 deg TVD:
6998.54 ft

S: 95 MD: 9704.00 ft Inc: 92.05
deg Az: 356.75 deg TVD:
6996.86 ft



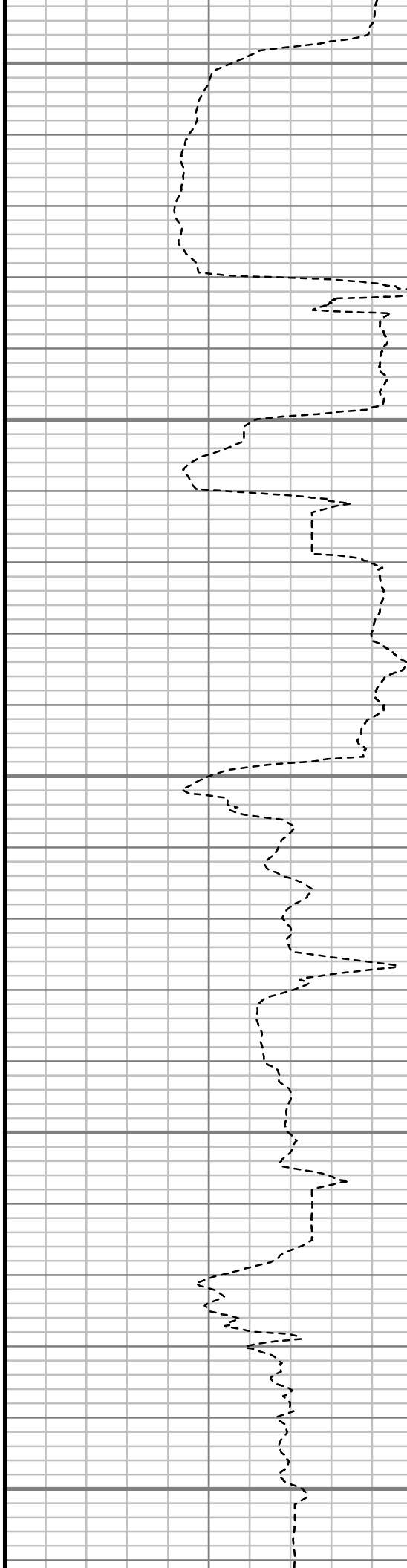
9800

9850

9900

9950

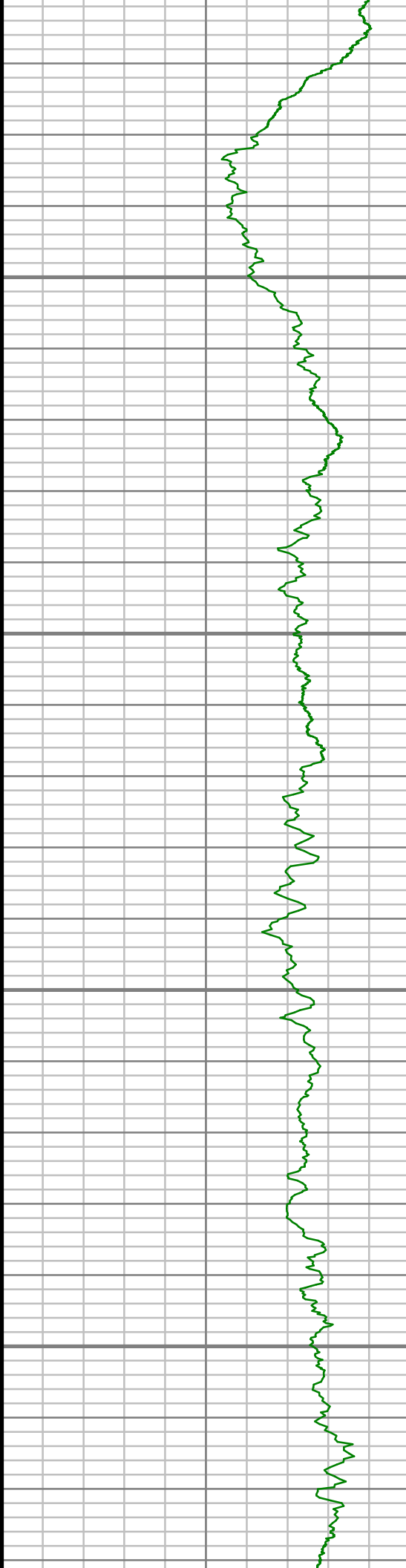
10000



S: 96 MD: 9800.00 ft Inc: 93.39
deg Az: 356.84 deg TVD:
6992.31 ft

S: 97 MD: 9895.00 ft Inc: 93.33
deg Az: 0.53 deg TVD: 6986.74
ft

S: 98 MD: 9990.00 ft Inc: 92.98
deg Az: 359.67 deg TVD:
6981.51 ft



10050

10100

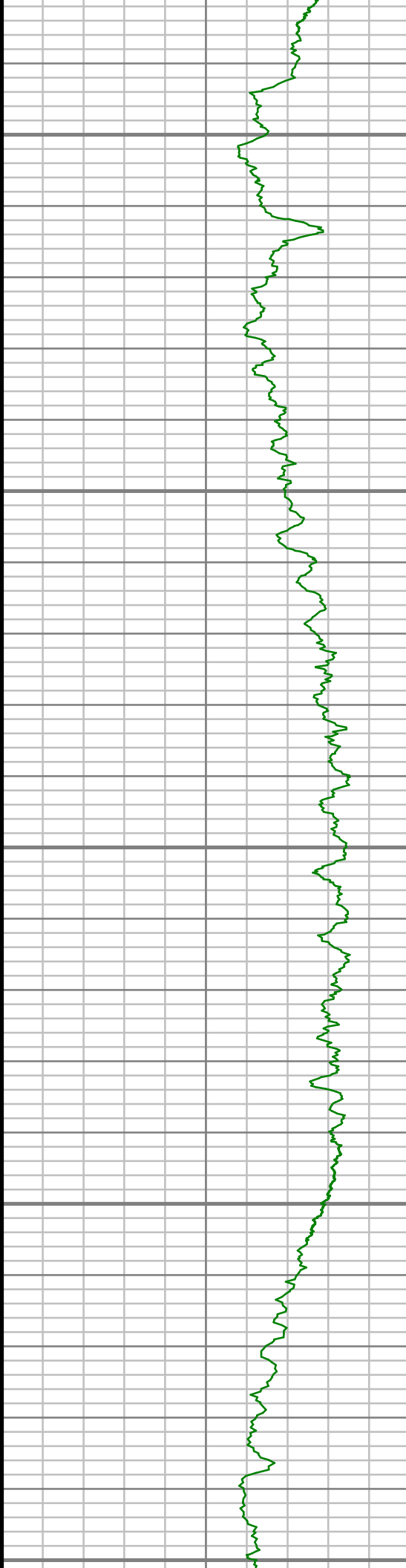
10150

10200



S: 99 MD: 10085.00 ft Inc:
92.52 deg Az: 1.17 deg TVD:
6976.95 ft

S: 100 MD: 10180.00 ft Inc:
90.20 deg Az: 2.19 deg TVD:
6974.69 ft



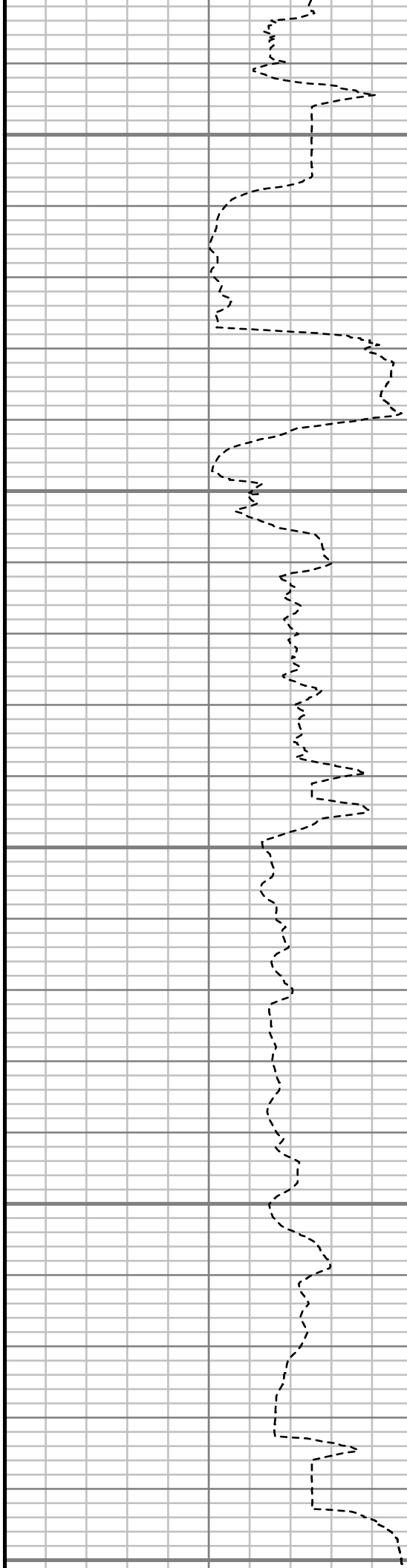
10250

10300

10350

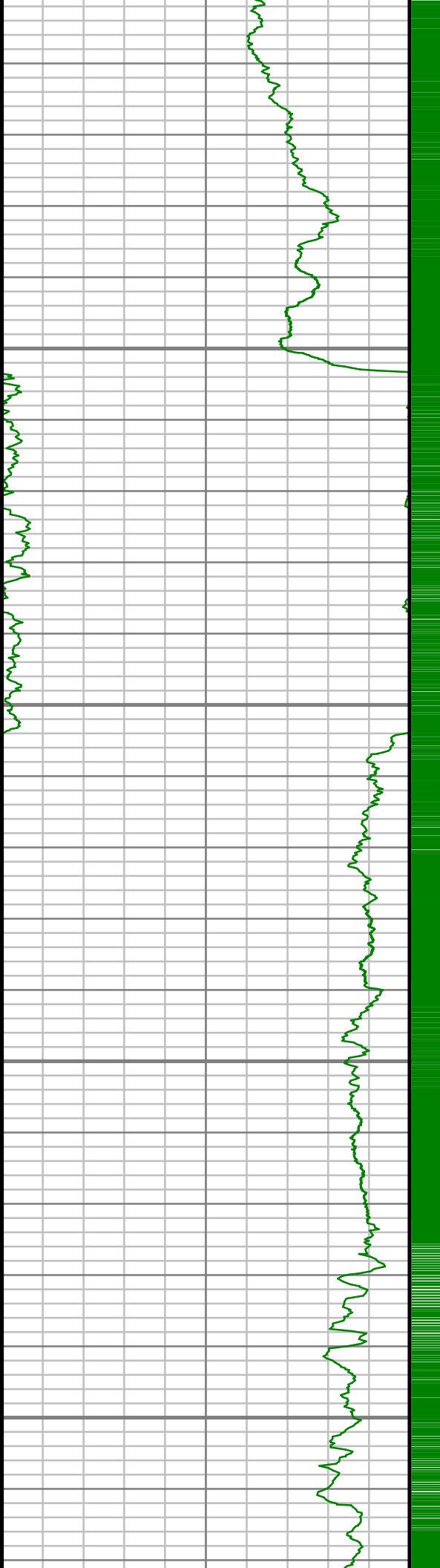
10400

10450



S: 101 MD: 10275.00 ft Inc:
90.20 deg Az: 1.96 deg TVD:
6974.36 ft

S: 102 MD: 10371.00 ft Inc:
89.50 deg Az: 1.65 deg TVD:
6974.61 ft



10500

10550

10600

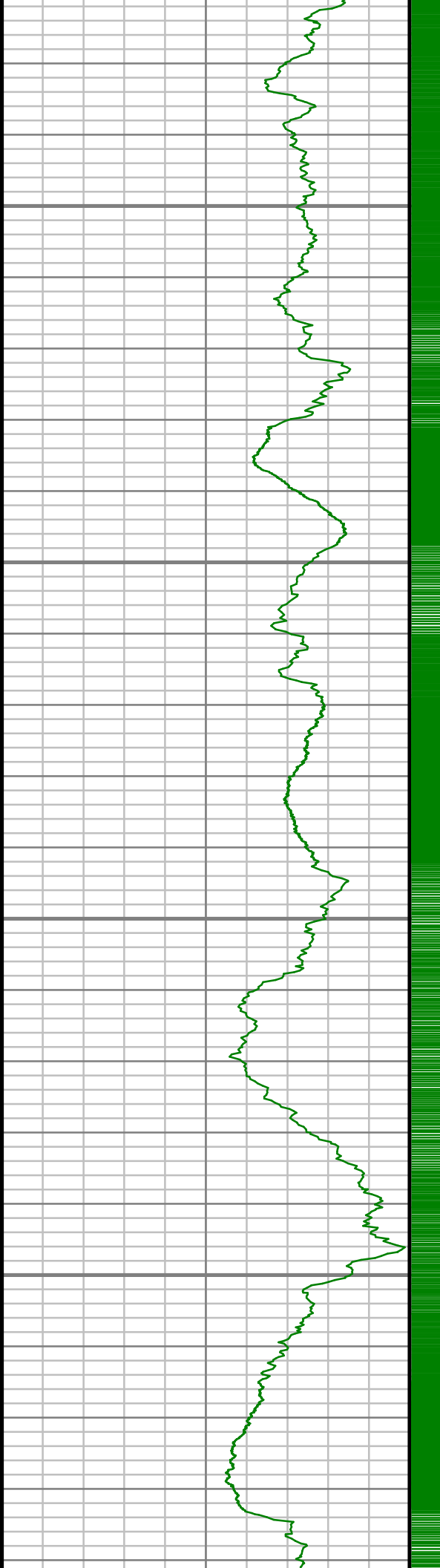
10650

S: 103 MD: 10466.00 ft Inc:
90.81 deg Az: 1.80 deg TVD:
6974.36 ft

S: 104 MD: 10561.00 ft Inc:
90.17 deg Az: 1.52 deg TVD:
6973.55 ft

S: 105 MD: 10656.00 ft Inc:
88.29 deg Az: 1.28 deg TVD:
6974.83 ft



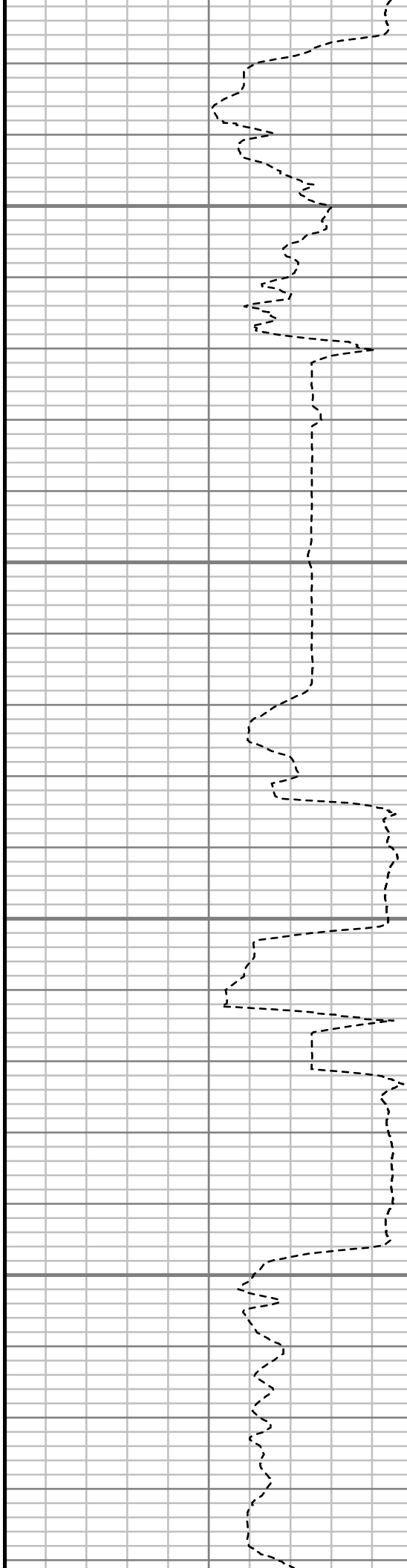


10700

10750

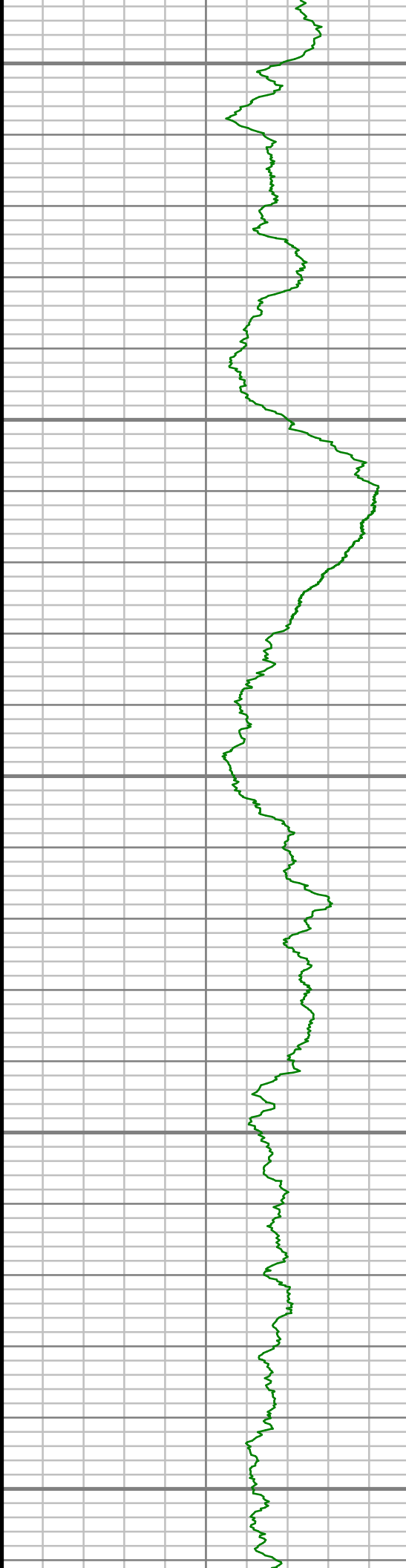
10800

10850



S: 106 MD: 10752.00 ft Inc:
85.47 deg Az: 0.47 deg TVD:
6980.05 ft

S: 107 MD: 10847.00 ft Inc:
88.19 deg Az: 0.46 deg TVD:
6985.31 ft



10900

10950

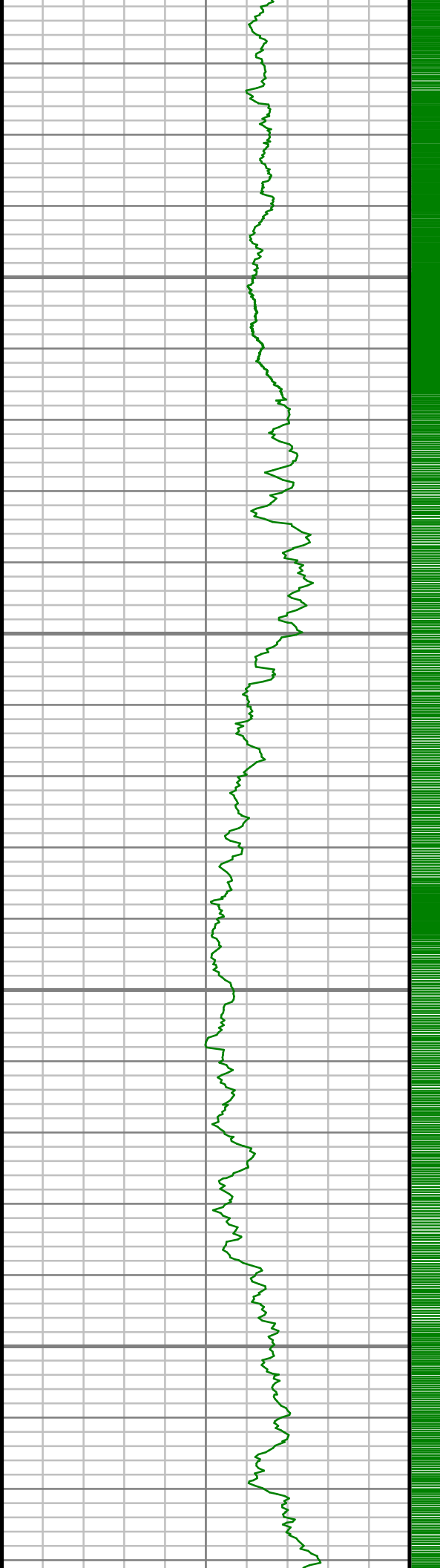
11000

11050

11100

S: 108 MD: 10942.00 ft Inc:
88.93 deg Az: 0.49 deg TVD:
6987.70 ft

S: 109 MD: 11037.00 ft Inc:
90.30 deg Az: 0.63 deg TVD:
6988.34 ft

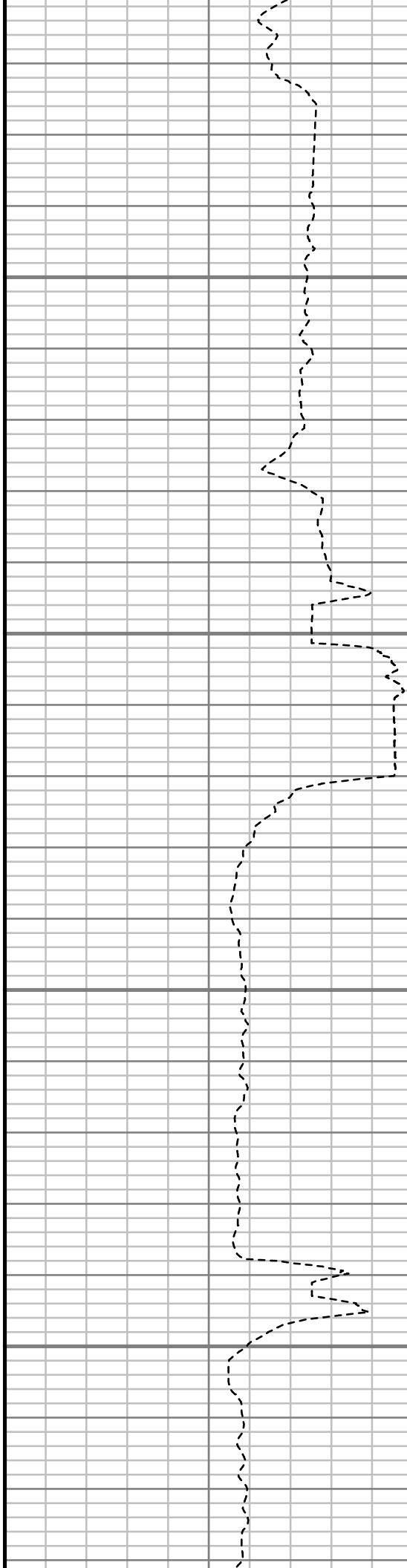


11150

11200

11250

11300



S: 110 MD: 11133.00 ft Inc:
89.60 deg Az: 359.57 deg TVD:
6988.43 ft

S: 111 MD: 11228.00 ft Inc:
90.44 deg Az: 0.39 deg TVD:
6988.40 ft

S: 112 MD: 11323.00 ft Inc:
88.66 deg Az: 359.56 deg TVD:
6989.15 ft



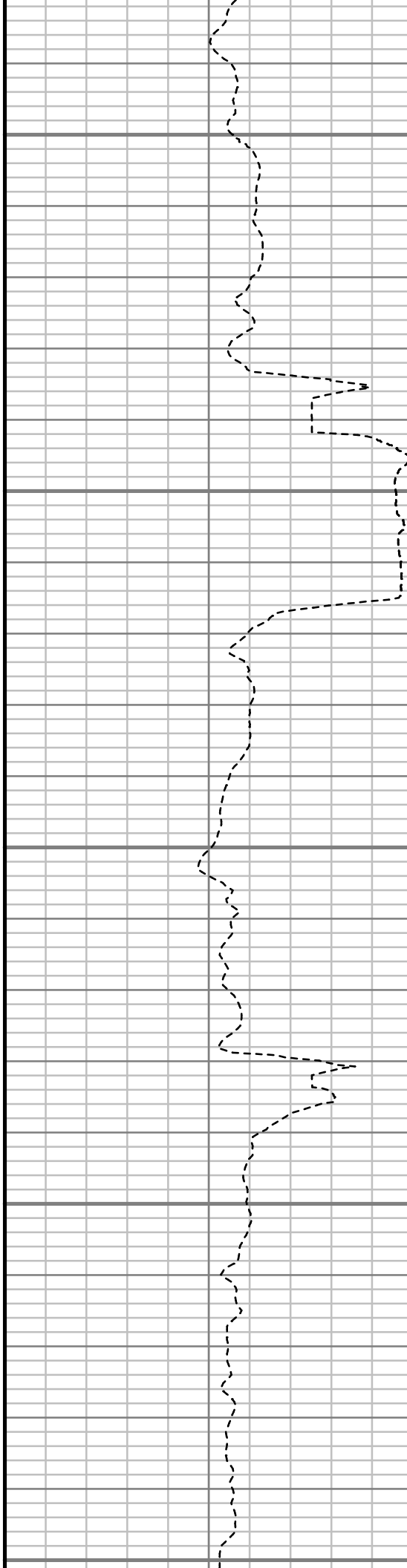
11350

11400

11450

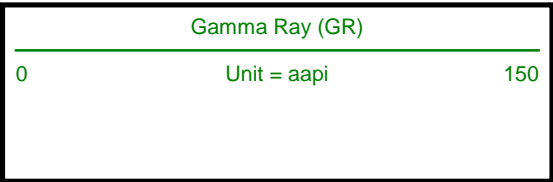
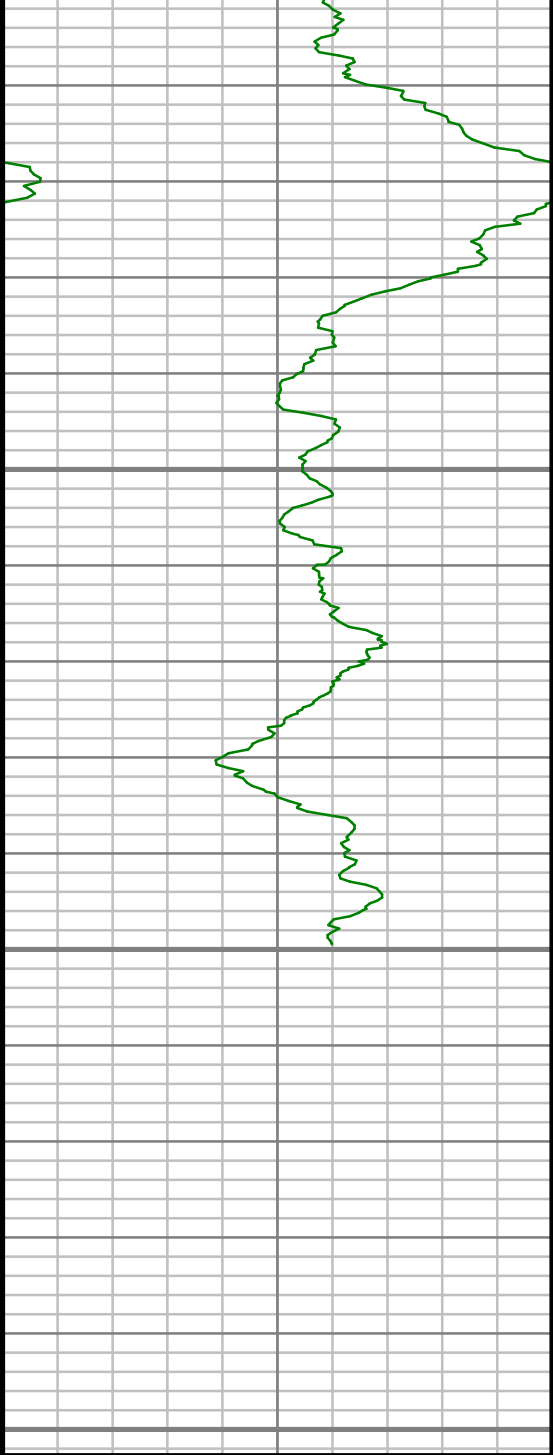
11500

11550



S: 113 MD: 11419.00 ft Inc:
88.92 deg Az: 358.17 deg TVD:
6991.18 ft

S: 114 MD: 11514.00 ft Inc:
88.05 deg Az: 357.10 deg TVD:
6993.68 ft

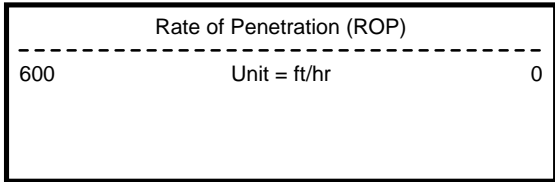
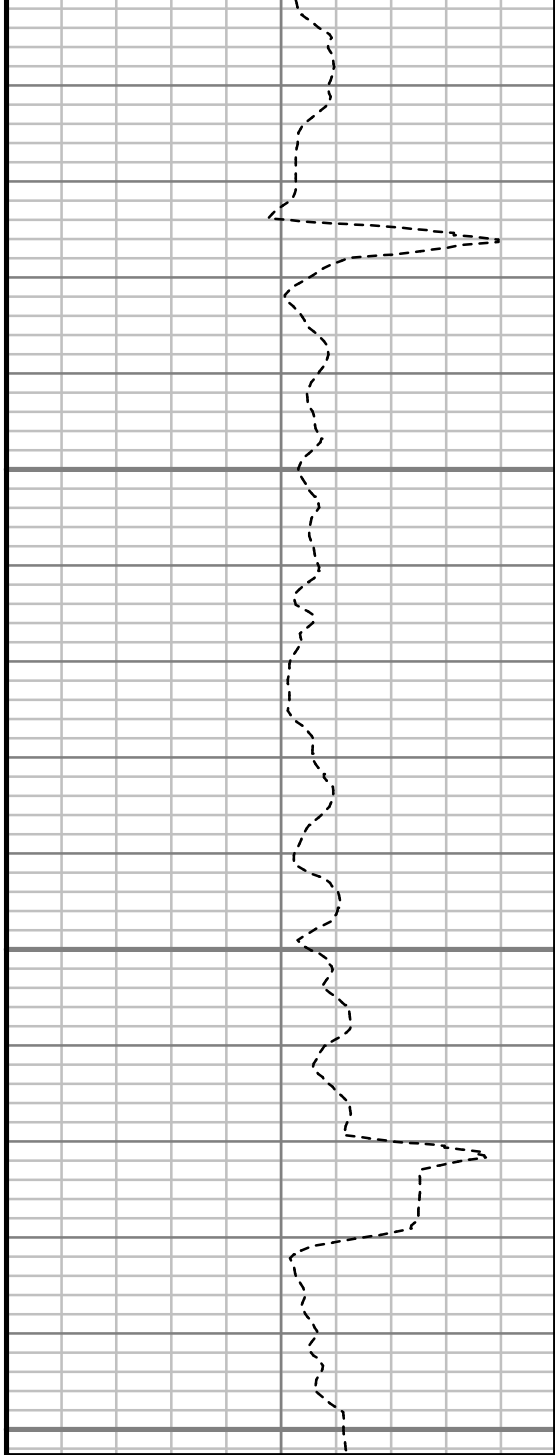


11600

11650

11700

MEASURED DEPTH
1:240 (ft)



S: 115 MD: 11638.00 ft Inc:
85.52 deg Az: 356.33 deg TVD:
7000.63 ft

Comments

MWD Survey Report

Well Location	DALE
Well Name	DALE 4J-20H-O264
Survey Date	8/16/2014
Latitude	40°7'3.504"N
Longitude	104°34'18.408"W
Btotal	52557 nT
Dip	66.74 deg
Magnetic Declination	8.39 deg
North Reference	True North
Grid Correction	None
Depth Reference	RKB (25.00 ft)
Calculation Method	Minimum Curvature
Section (VS) Ref	0.00N (ft), 0.00E (ft), 15.57Azim (deg)
Operator(s)	C. WILSON, S. WAXLER, T. LE

Well Notes

MD	Inc	Azim	TVD	VS	+N/-S	+E/-W	Closure Distance	Closure Direction	DLS
ft	deg	deg	ft	ft	ft	ft	ft	deg	"/100ft
0.00	0.00	0.00	0.00	0.00	0.00	0.00	0.00	0.00	Invalid
140.00	0.44	53.70	140.00	0.42	0.32	0.43	0.54	53.70	0.31
201.00	0.63	322.38	201.00	0.81	0.72	0.42	0.83	30.15	1.27
263.00	1.13	91.05	262.99	1.16	0.98	0.82	1.28	39.99	2.57
323.00	1.89	90.18	322.97	1.57	0.96	2.40	2.59	68.09	1.27
354.00	2.42	106.00	353.95	1.70	0.78	3.54	3.62	77.52	2.55
384.00	3.29	112.41	383.91	1.60	0.28	4.94	4.95	86.75	3.09
445.00	4.34	106.79	444.78	1.34	-1.05	8.77	8.83	96.85	1.84
506.00	4.46	104.77	505.60	1.32	-2.33	13.28	13.48	99.94	0.32
568.00	5.59	108.72	567.36	1.19	-3.91	18.47	18.88	101.95	1.90
629.00	6.78	103.89	628.00	1.13	-5.73	24.78	25.43	103.01	2.13
689.00	8.24	107.31	687.49	1.11	-7.86	32.32	33.26	103.66	2.54
751.00	9.46	108.63	748.75	0.70	-10.81	41.39	42.78	104.63	2.00
812.00	10.91	106.26	808.78	0.36	-14.02	51.68	53.55	105.18	2.47
873.00	12.14	104.15	868.55	0.45	-17.21	63.44	65.74	105.18	2.13
934.00	13.28	101.43	928.06	1.12	-20.17	76.53	79.15	104.76	2.12
995.00	14.43	100.02	987.28	2.36	-22.88	90.89	93.72	104.13	1.95
1043.00	14.34	100.63	1033.78	3.45	-25.01	102.62	105.62	103.70	0.37
1087.00	14.25	101.25	1076.41	4.33	-27.08	113.29	116.48	103.44	0.40

MD	Inc	Azim	TVD	VS	+N/-S	+E/-W	Closure Distance	Closure Direction	DLS
ft	deg	deg	ft	ft	ft	ft	ft	deg	°/100ft
1178.00	13.72	106.44	1164.72	5.01	-32.32	134.63	138.45	103.50	1.49
1270.00	14.87	104.85	1253.87	4.99	-38.43	156.50	161.15	103.80	1.31
1361.00	15.48	104.77	1341.69	5.31	-44.52	179.54	184.97	103.93	0.68
1453.00	15.92	105.03	1430.26	5.60	-50.92	203.60	209.87	104.04	0.48
1525.00	15.26	102.40	1499.61	6.21	-55.52	222.39	229.22	104.02	1.35
1616.00	14.48	100.96	1587.56	7.79	-60.25	245.26	252.55	103.80	0.94
1708.00	15.25	102.17	1676.49	9.43	-64.99	268.38	276.13	103.61	0.90
1800.00	15.13	102.41	1765.27	10.81	-70.12	291.93	300.23	103.51	0.15
1891.00	13.84	106.46	1853.38	11.30	-75.76	313.96	322.98	103.57	1.79
2073.00	14.20	105.53	2029.96	10.97	-87.90	356.36	367.04	103.86	0.23
2256.00	13.57	103.95	2207.61	11.60	-99.09	398.82	410.95	103.95	0.40
2439.00	13.30	106.85	2385.60	11.73	-110.37	439.81	453.44	104.09	0.40
2622.00	13.46	105.55	2563.63	11.27	-122.18	480.48	495.77	104.27	0.18
2804.00	13.86	105.02	2740.48	11.48	-133.52	521.94	538.75	104.35	0.23
2994.00	14.39	103.30	2924.74	12.63	-144.85	566.91	585.12	104.33	0.35
3184.00	14.74	103.63	3108.63	14.39	-155.98	613.38	632.90	104.27	0.19
3373.00	14.17	103.75	3291.65	15.94	-167.14	659.22	680.07	104.23	0.31
3563.00	13.89	104.48	3475.98	17.11	-178.36	703.88	726.12	104.22	0.17

MD	Inc	Azim	TVD	VS	+N/-S	+E/-W	Closure Distance	Closure Direction	DLS
ft	deg	deg	ft	ft	ft	ft	ft	deg	°/100ft
3753.00	13.95	103.89	3660.40	18.22	-189.56	748.18	771.82	104.22	0.08
3942.00	14.23	104.13	3843.72	19.47	-200.70	792.83	817.84	104.21	0.16
4131.00	15.79	105.90	4026.26	19.91	-213.42	840.10	866.78	104.25	0.86
4320.00	14.61	104.04	4208.65	20.40	-226.24	887.95	916.32	104.29	0.68
4510.00	16.49	104.64	4391.69	21.48	-238.86	937.28	967.24	104.30	0.99
4700.00	14.62	106.62	4574.72	21.48	-252.54	986.34	1018.16	104.36	1.02
4890.00	15.44	99.89	4758.24	23.54	-263.74	1034.23	1067.33	104.31	1.02
5081.00	12.51	99.31	4943.57	28.31	-271.46	1079.70	1113.30	104.11	1.53
5271.00	10.87	105.23	5129.62	30.67	-279.49	1117.31	1151.73	104.04	1.07
5461.00	12.08	106.61	5315.82	30.41	-289.88	1153.64	1189.51	104.10	0.65
5652.00	9.04	102.78	5503.57	30.78	-298.91	1187.43	1224.48	104.13	1.63
5842.00	6.50	113.80	5691.82	29.97	-306.55	1211.82	1250.00	104.20	1.54
6033.00	5.38	100.78	5881.80	29.17	-312.58	1230.50	1269.58	104.25	0.91
6223.00	3.93	100.65	6071.17	30.48	-315.45	1245.65	1284.97	104.21	0.76
6414.00	1.83	84.61	6261.92	32.13	-316.38	1255.11	1294.37	104.15	1.17
6462.00	1.68	84.08	6309.90	32.66	-316.23	1256.58	1295.76	104.13	0.30
6509.00	2.03	77.98	6356.88	33.30	-315.99	1258.08	1297.15	104.10	0.84
6556.00	3.43	23.97	6403.83	35.07	-314.53	1259.46	1298.14	104.02	5.91

MD	Inc	Azim	TVD	VS	+N/-S	+E/-W	Closure Distance	Closure Direction	DLS
ft	deg	deg	ft	ft	ft	ft	ft	deg	°/100ft
6605.00	6.12	11.67	6452.65	39.13	-310.63	1260.58	1298.29	103.84	5.84
6652.00	8.46	6.49	6499.27	45.05	-304.74	1261.48	1297.77	103.58	5.17
6700.00	10.95	4.63	6546.58	53.01	-296.68	1262.25	1296.65	103.23	5.23
6747.00	13.93	1.77	6592.47	62.89	-286.58	1262.79	1294.89	102.79	6.48
6795.00	17.58	1.00	6638.66	75.52	-273.55	1263.09	1292.37	102.22	7.60
6842.00	22.26	1.42	6682.84	91.03	-257.55	1263.44	1289.42	101.52	9.97
6890.00	25.98	2.59	6726.64	110.09	-237.95	1264.14	1286.34	100.66	7.81
6937.00	31.02	3.27	6767.93	131.97	-215.56	1265.29	1283.52	99.67	10.75
6985.00	35.44	2.11	6808.08	157.60	-189.30	1266.51	1280.58	98.50	9.32
7034.00	39.98	1.67	6846.83	186.72	-159.35	1267.49	1277.47	97.17	9.28
7081.00	46.55	1.89	6881.03	217.98	-127.17	1268.50	1274.85	95.72	13.97
7128.00	54.09	2.49	6911.02	253.15	-91.05	1269.89	1273.15	94.10	16.08
7176.00	61.56	1.85	6936.57	292.64	-50.48	1271.42	1272.42	92.27	15.61
7223.00	69.22	0.13	6956.13	333.96	-7.79	1272.14	1272.16	90.35	16.63
7271.00	77.11	358.70	6970.02	378.05	38.11	1271.65	1272.23	88.28	16.69
7295.00	81.18	359.11	6974.54	400.62	61.67	1271.20	1272.70	87.22	17.03
7433.00	88.92	0.58	6986.43	532.86	199.05	1270.83	1286.33	81.10	5.71
7524.00	90.40	0.45	6986.97	620.73	290.04	1271.65	1304.31	77.15	1.63

MD	Inc	Azim	TVD	VS	+N/-S	+E/-W	Closure Distance	Closure Direction	DLS
ft	deg	deg	ft	ft	ft	ft	ft	deg	°/100ft
7616.00	91.01	359.13	6985.83	709.25	382.03	1271.31	1327.47	73.27	1.58
7711.00	91.98	359.62	6983.36	800.45	476.99	1270.28	1356.88	69.42	1.15
7806.00	92.42	359.38	6979.71	891.67	571.92	1269.46	1392.34	65.75	0.53
7901.00	91.98	358.51	6976.06	982.64	666.83	1267.71	1432.40	62.26	1.03
7996.00	90.77	358.54	6973.77	1073.43	761.77	1265.26	1476.89	58.95	1.28
8091.00	90.27	358.75	6972.91	1164.31	856.74	1263.02	1526.18	55.85	0.57
8186.00	89.56	358.73	6973.05	1255.24	951.72	1260.93	1579.78	52.96	0.74
8280.00	88.39	357.60	6974.73	1344.92	1045.65	1257.92	1635.77	50.26	1.73
8377.00	87.95	358.77	6977.83	1437.44	1142.55	1254.85	1697.08	47.68	1.28
8472.00	87.65	358.73	6981.48	1528.31	1237.46	1252.77	1760.89	45.35	0.32
8567.00	89.36	358.84	6983.96	1619.23	1332.40	1250.76	1827.48	43.19	1.81
8661.00	88.63	358.91	6985.61	1709.25	1426.37	1248.92	1895.87	41.21	0.79
8756.00	89.63	359.64	6987.06	1800.43	1521.35	1247.72	1967.56	39.36	1.31
8851.00	90.57	359.05	6986.89	1891.64	1616.34	1246.63	2041.24	37.64	1.17
8945.00	88.35	357.92	6987.78	1981.48	1710.29	1244.15	2114.95	36.03	2.65
9040.00	88.29	358.89	6990.56	2072.21	1805.22	1241.50	2190.92	34.52	1.03
9134.00	88.99	0.69	6992.79	2162.64	1899.18	1241.16	2268.78	33.17	2.05
9229.00	88.02	0.98	6995.26	2254.48	1994.14	1242.54	2349.58	31.93	1.07

MD	Inc	Azim	TVD	VS	+N/-S	+E/-W	Closure Distance	Closure Direction	DLS
ft	deg	deg	ft	ft	ft	ft	ft	deg	°/100ft
9324.00	87.38	359.96	6999.07	2346.12	2089.06	1243.32	2431.05	30.76	1.27
9419.00	89.26	0.28	7001.86	2437.65	2184.01	1243.52	2513.22	29.66	2.01
9514.00	92.39	357.50	7000.49	2528.62	2278.97	1241.69	2595.28	28.58	4.41
9609.00	89.97	357.34	6998.54	2618.87	2373.84	1237.41	2677.00	27.53	2.56
9704.00	92.05	356.75	6996.86	2708.93	2468.70	1232.52	2759.27	26.53	2.28
9800.00	93.39	356.84	6992.31	2799.72	2564.44	1227.16	2842.93	25.57	1.40
9895.00	93.33	0.53	6986.74	2890.45	2659.23	1224.98	2927.81	24.73	3.88
9990.00	92.98	359.67	6981.51	2981.87	2754.09	1225.15	3014.30	23.98	0.98
10085.00	92.52	1.17	6976.95	3073.46	2848.97	1225.85	3101.50	23.28	1.65
10180.00	90.20	2.19	6974.69	3165.65	2943.89	1228.63	3189.99	22.65	2.67
10275.00	90.20	1.96	6974.36	3258.02	3038.83	1232.08	3279.10	22.07	0.24
10371.00	89.50	1.65	6974.61	3351.27	3134.78	1235.11	3369.32	21.50	0.80
10466.00	90.81	1.80	6974.36	3443.51	3229.74	1237.97	3458.87	20.97	1.39
10561.00	90.17	1.52	6973.55	3535.72	3324.69	1240.73	3548.66	20.46	0.73
10656.00	88.29	1.28	6974.83	3627.82	3419.65	1243.06	3638.57	19.98	1.99
10752.00	85.47	0.47	6980.05	3720.53	3515.49	1244.52	3729.27	19.49	3.06
10847.00	88.19	0.46	6985.31	3812.10	3610.33	1245.28	3819.06	19.03	2.87
10942.00	88.93	0.49	6987.70	3903.79	3705.30	1246.07	3909.21	18.59	0.78

MD	Inc	Azim	TVD	VS	+N/-S	+E/-W	Closure Distance	Closure Direction	DLS
ft	deg	deg	ft	ft	ft	ft	ft	deg	°/100ft
11037.00	90.30	0.63	6988.34	3995.54	3800.29	1247.01	3999.65	18.17	1.45
11133.00	89.60	359.57	6988.43	4088.06	3896.28	1247.17	4091.02	17.75	1.33
11228.00	90.44	0.39	6988.40	4179.57	3991.28	1247.14	4181.59	17.35	1.23
11323.00	88.66	359.56	6989.15	4271.06	4086.28	1247.10	4272.34	16.97	2.06
11419.00	88.92	358.17	6991.18	4362.99	4182.23	1245.20	4363.67	16.58	1.47
11514.00	88.05	357.10	6993.68	4453.34	4277.12	1241.29	4453.60	16.18	1.45
11638.00	85.52	356.33	7000.63	4570.49	4400.71	1234.20	4570.50	15.67	2.13

5" = 100' FEET MD