


5" = 100' FEET MD

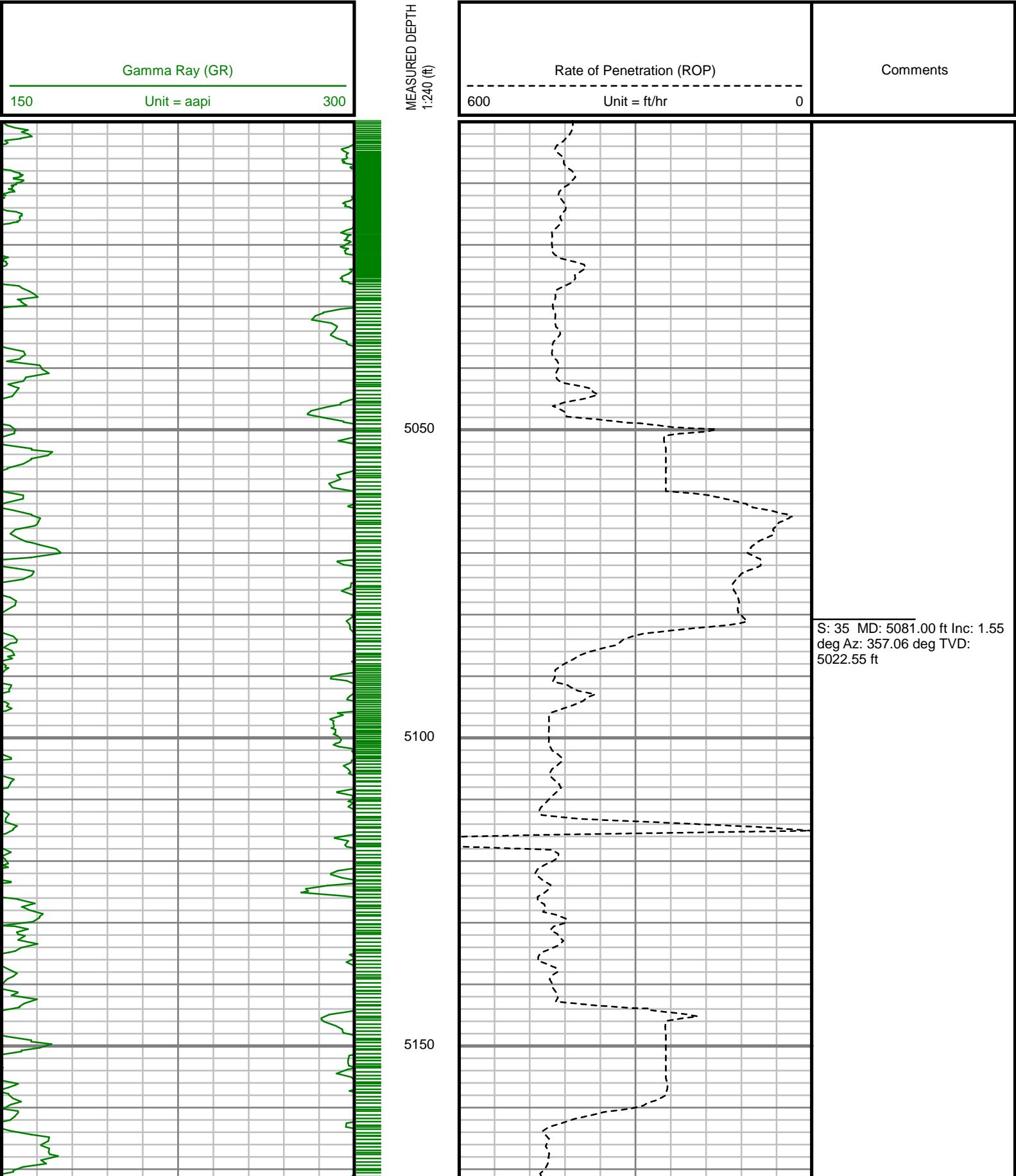
<div><div>Scientific Drilling</div></div>												GAMMA RAY											
5" = 100' FEET MD																							
<div>COMPANY : ENCANA OIL &amp; GAS (U.S.A) INC WELL : DALE 4G-20H-0264 FIELD : WATTENBERG COUNTY : WELD STATE : COLORADO COUNTRY : U.S.A. UWI : 123-39726</div>												<div>COMPANY : ENCANA OIL &amp; GAS (U.S.A) INC WELL : DALE 4G-20H-0264 FIELD : WATTENBERG COUNTY : WELD STATE : COLORADO COUNTRY : U.S.A. UWI : 123-39726</div>											
<div>DEPTH REF. : RKB REF. HEIGHT : 25.000 ft GROUND LEVEL : 4957.000 ft</div>												<div>RKB to Ground Level G.L. to MEAN SEA LEVEL</div>											
BOREHOLE RECORD						DEVIATION RECORD																	
HOLE SIZE in	FROM ft	TO ft	INCLINATION deg	FROM ft	TO ft																		
12.25	0	1120	0 - 11	0	4576																		
8.75	1120	7378	11 - 1	4576	6481																		
6.125	7378	11562	1 - 83	6481	7312																		
			83 - 91	7312	11562																		
CASING RECORD																							
CASING SIZE in	FROM ft	TO ft																					
9.625	0	1115																					
7	0	7363																					
DRILLING CO. : H&P RIG : 278 LMD UNIT NO. : SPUD DATE : 08/20/2014 LMD START DATE : 10/01/2014 LMD END DATE : 10/06/2014												DISTRICT : CASPER, CASPER DEPTH : 5000 ft DEPTH : 11562 ft TOTAL DEPTH : 11562 ft											

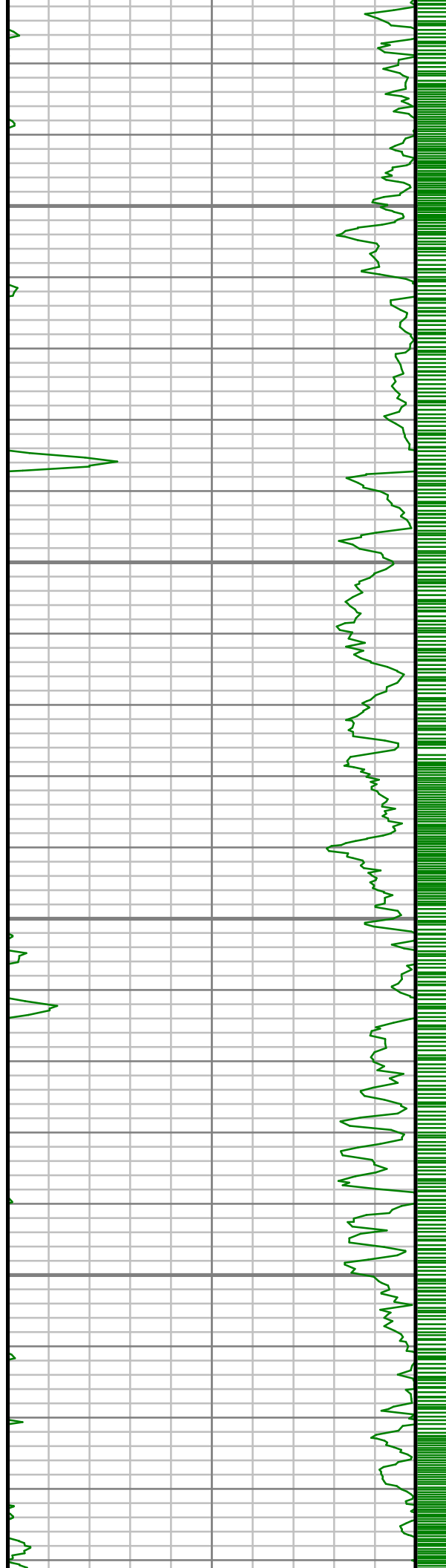
Run Data						
RUN NUMBER	1	2	3	4		
START DATE	08/20/2014	09/30/2014	10/03/2014	10/04/2014		
START TIME	0045	0730	1030	0230		
END DATE	08/20/2014	10/02/2014	10/04/2014	10/06/2014		
END TIME	0915	0630	0115	0825		
DEPTH IN (ft)	0	1120	7378	7509		
DEPTH OUT (ft)	1120	7378	7509	11562		
LOG TOP (ft)	-	5000	7323	7454		
LOG BOTTOM (ft)	-	7323	7454	11506		
HOLE SIZE (in)	12.25	8.75	6.125	6.125		
MUD DATA @ (ft)	1120	7378	7378	11562		
MUD TYPE	WATER-BASED	WATER-BASED	WATER-BASED	WATER-BASED		
DENSITY (lb / gal)	8.5	10.55	10.85	10.9		
VISCOSITY (s / qt)	26	36	37	36		
pH	-	8.1	8	8.1		
FLUID LOSS (cm3 / 30)	-	-	-	-		
SALINITY (ppm)	-	-	-	-		
Rm (ohmm @ deg F)	-	-	-	-		
Rmf (ohmm @ deg F)	-	-	-	-		
MAX TEMP (deg F)	122	176	173	230		
Rm @ MAX TEMP (ohmm)	-	-	-	-		
LWD ENGINEER #1	S. WAXLER	S. WAXLER	S. WAXLER	S. WAXLER		
LWD ENGINEER #2	C. WILSON	C. WILSON	C. WILSON	C. WILSON		
LWD ENGINEER #3	T. LE	-	-	-		
LOG WITNESS #1	-	-	-	-		
LOG WITNESS #2	-	-	-	-		



All interpretations are opinions based on inferences from electrical or other measurements and we cannot, and do not guarantee the accuracy or correctness of any interpretations, and we shall not, except in the case of gross or willful negligence on our part, be liable or responsible for any loss, costs, damages or expenses incurred or sustained by anyone resulting from any interpretation made by any of our officers, agents or employees. These interpretations are also subject to our general terms and conditions as set out in our current price schedule.

ENCANA OIL AND GAS (U.S.A.) INC  
DALE 4G-20H-O264  
WATTENBERG FIELD  
WELD COUNTY, COLORADO  
05-123-39726



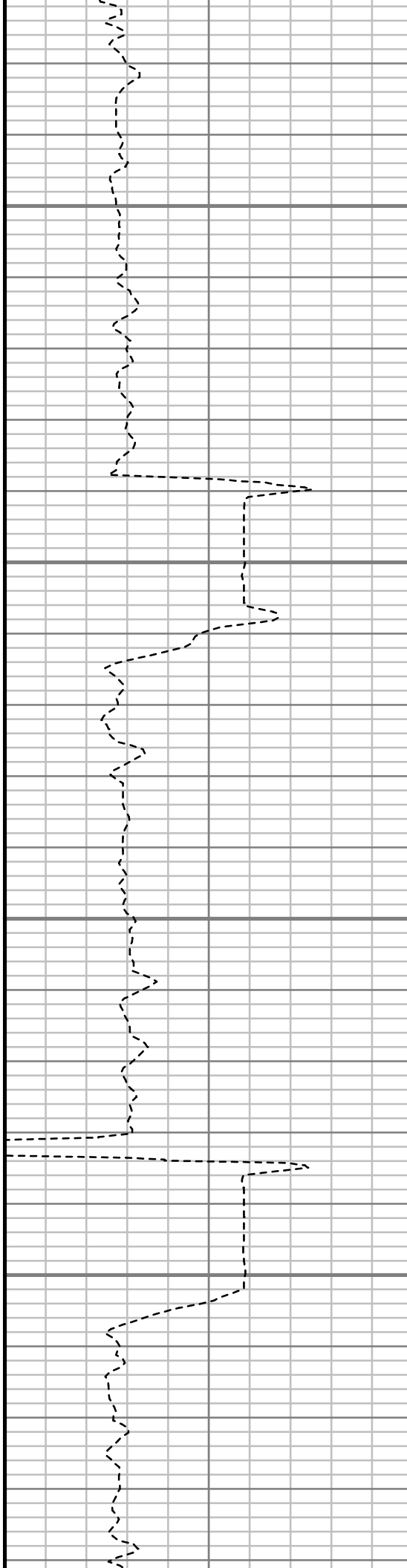


5200

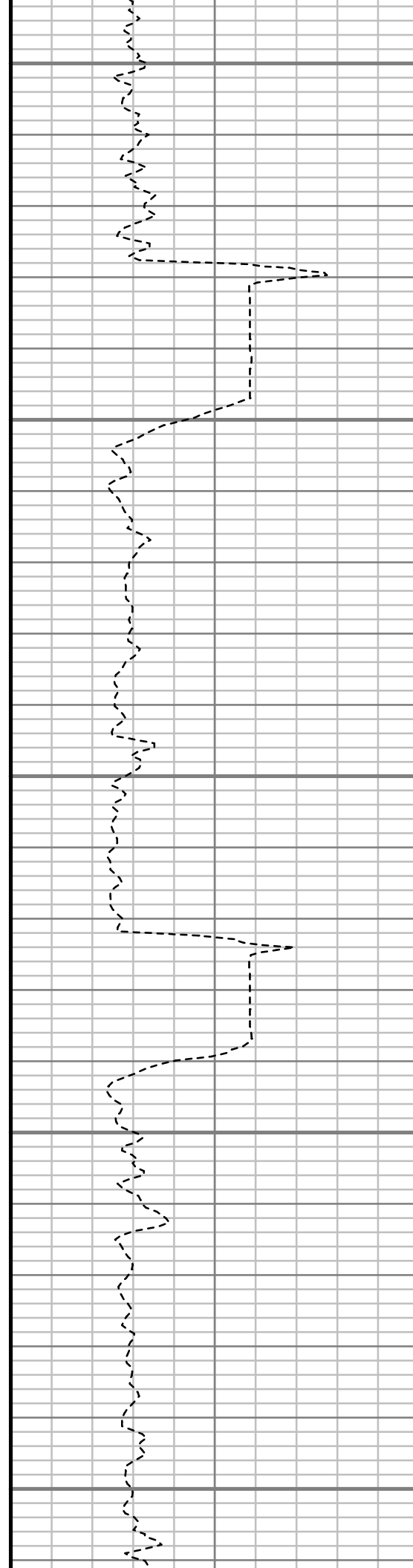
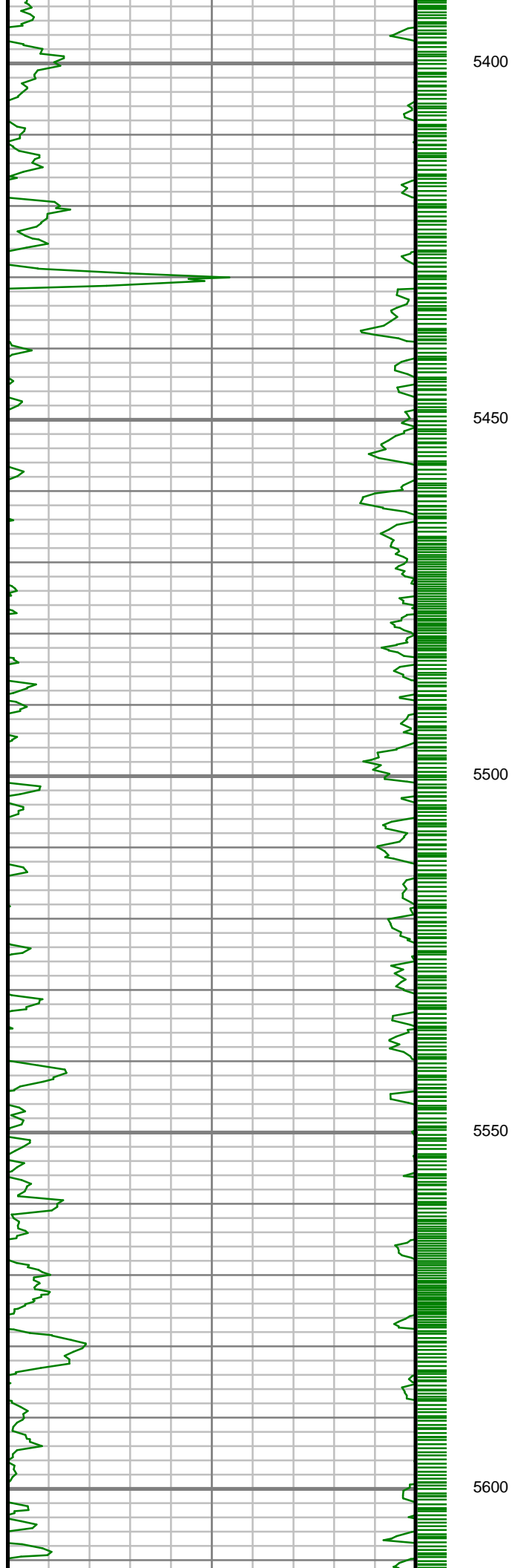
5250

5300

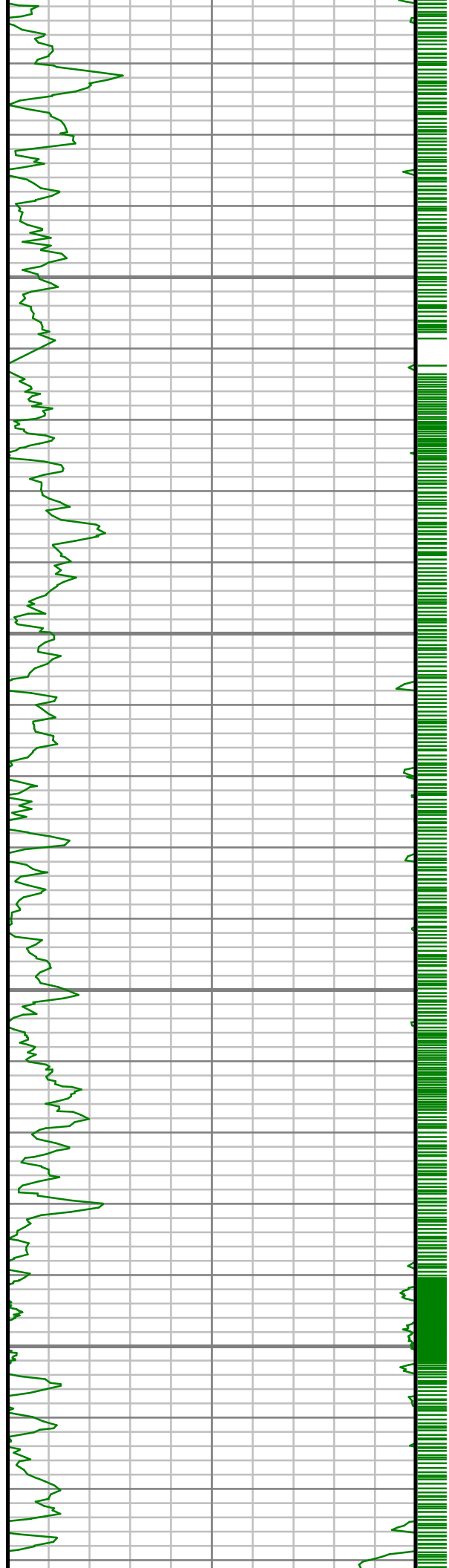
5350



S: 36 MD: 5271.00 ft Inc: 0.95  
deg Az: 336.56 deg TVD:  
5212.51 ft



S: 37 MD: 5462.00 ft Inc: 0.69  
deg Az: 353.46 deg TVD:  
5403.49 ft

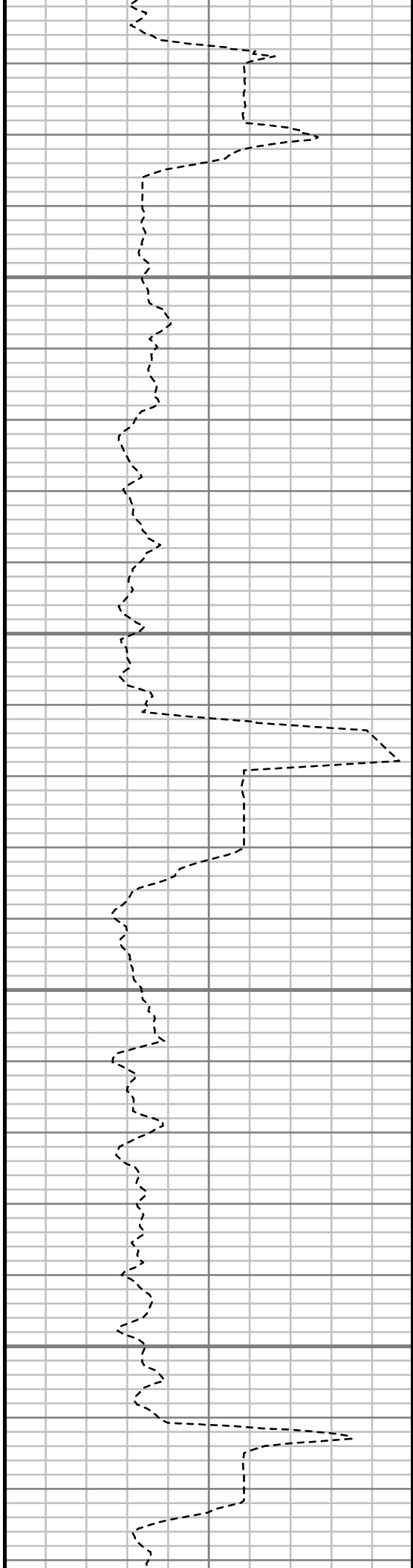


5650

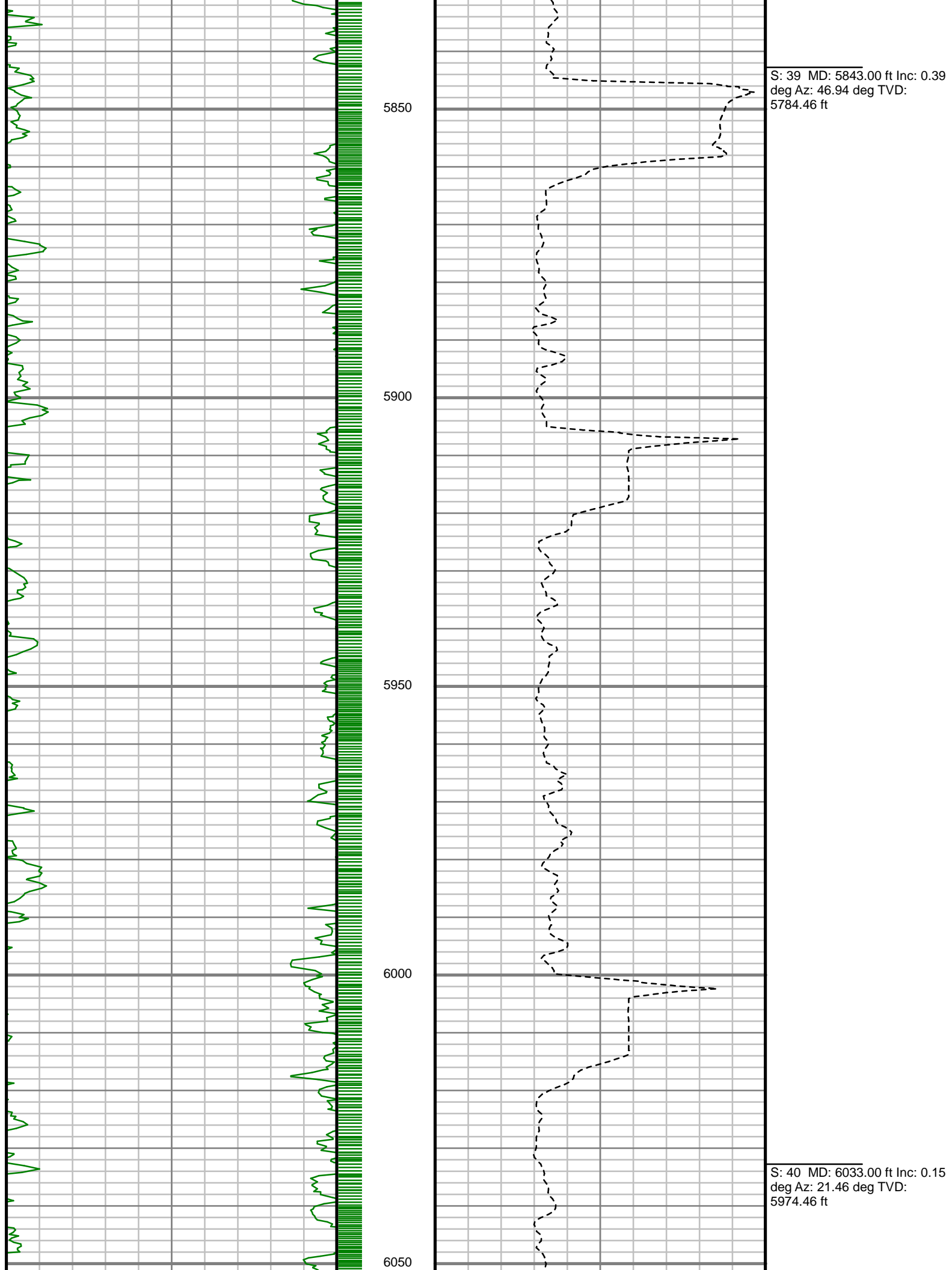
5700

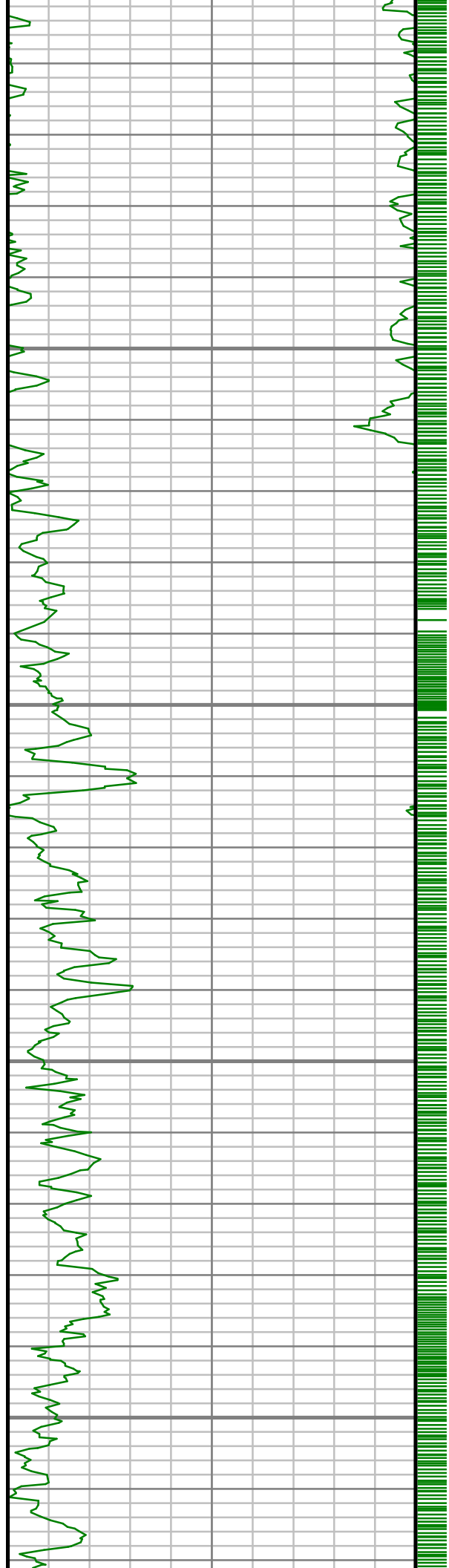
5750

5800



S: 38 MD: 5652.00 ft Inc: 0.84  
deg Az: 14.85 deg TVD:  
5593.47 ft



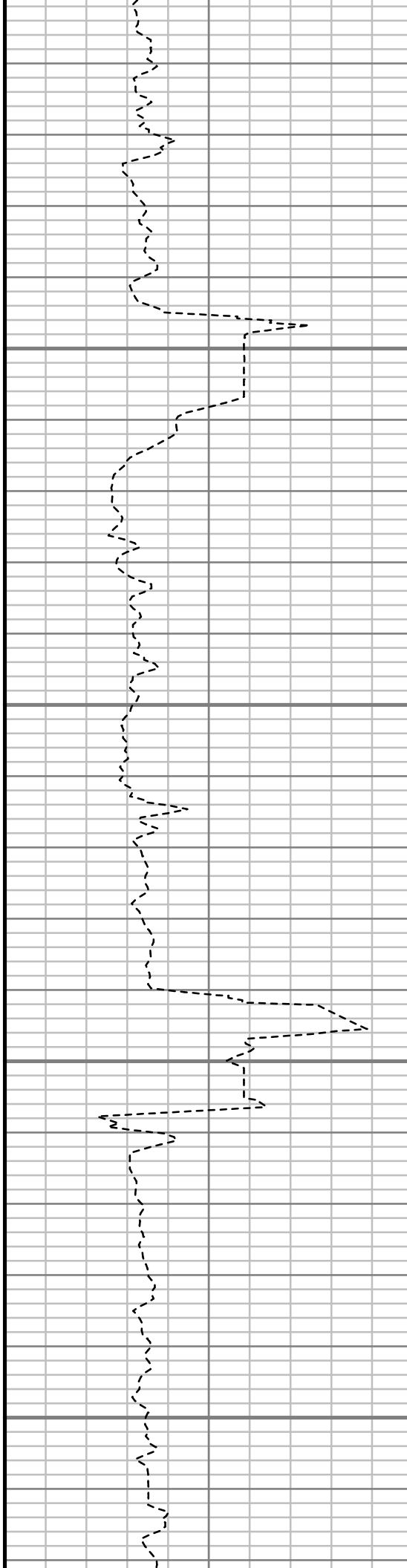


6100

6150

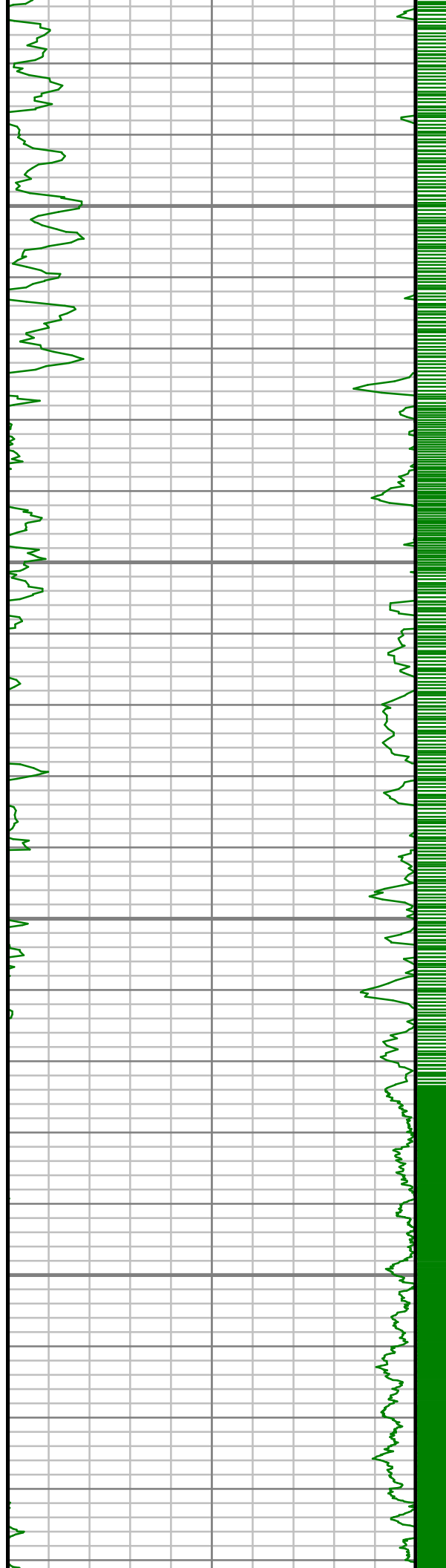
6200

6250



S: 41 MD: 6224.00 ft Inc: 0.79  
deg Az: 79.37 deg TVD:  
6165.45 ft



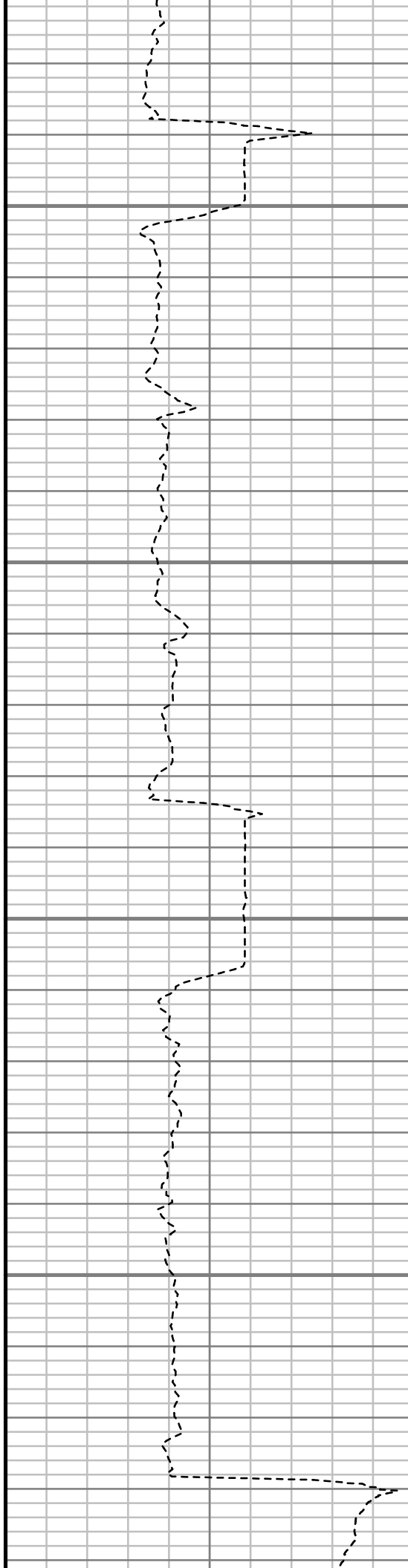


6300

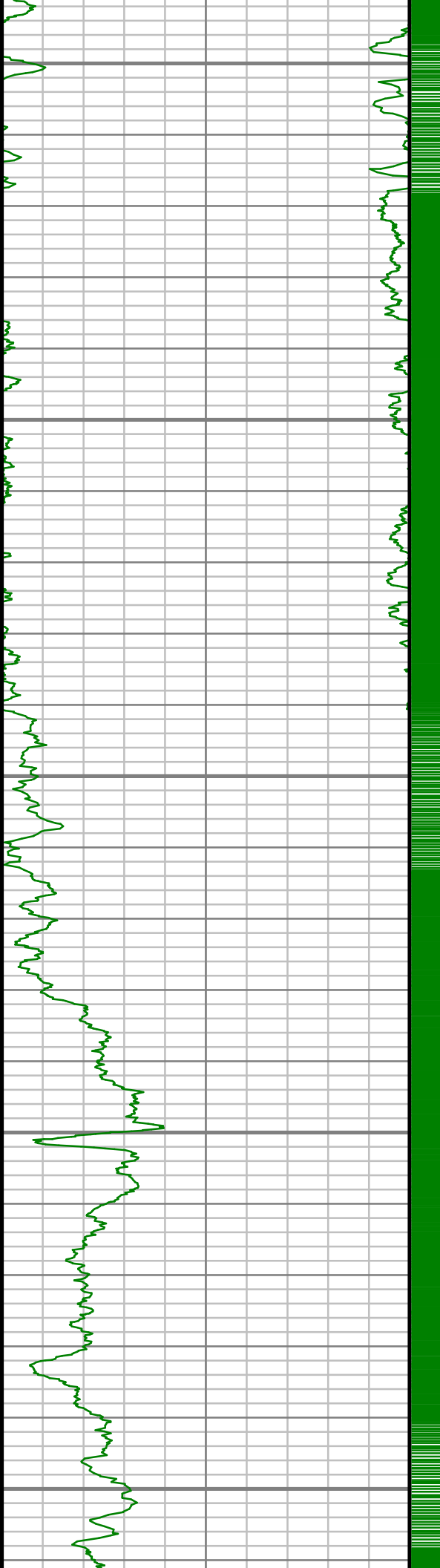
6350

6400

6450



S: 42 MD: 6415.00 ft Inc: 1.29  
deg Az: 59.65 deg TVD:  
6356.42 ft



6500

6550

6600

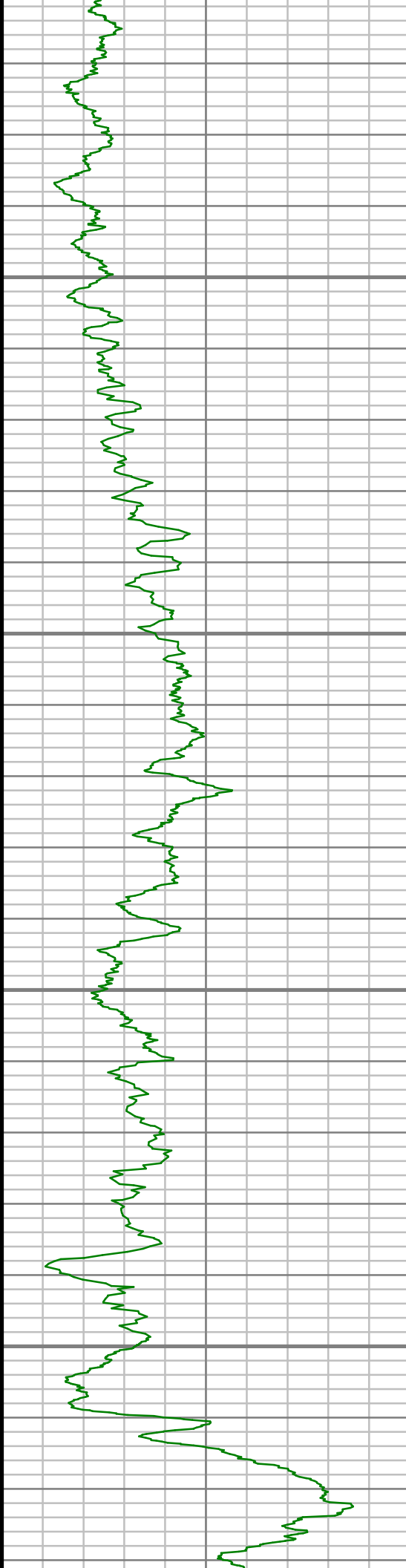
6650

6700

S: 43 MD: 6510.00 ft Inc: 3.55  
deg Az: 344.53 deg TVD:  
6451.35 ft

S: 44 MD: 6605.00 ft Inc: 12.34  
deg Az: 343.38 deg TVD:  
6545.34 ft

S: 45 MD: 6700.00 ft Inc: 23.49  
deg Az: 350.96 deg TVD:  
6635.60 ft

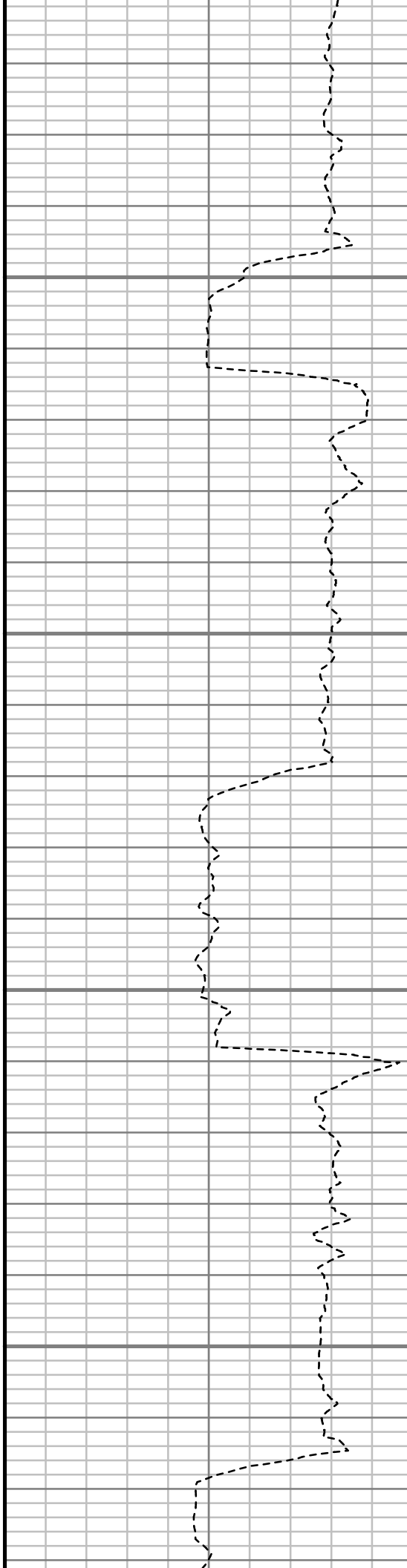


6750

6800

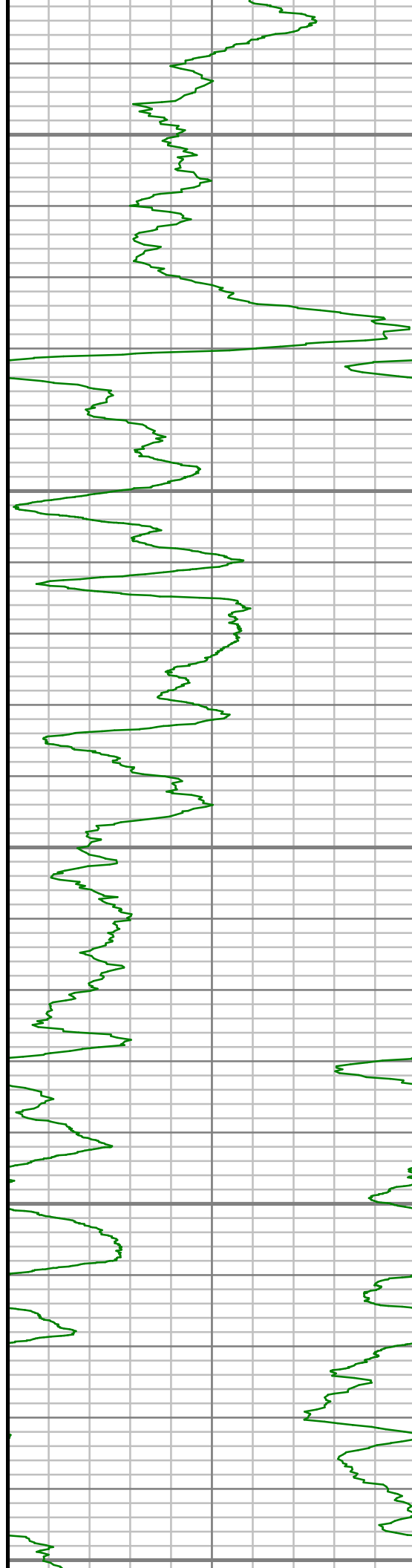
6850

6900



S: 46 MD: 6796.00 ft Inc: 36.54  
deg Az: 353.28 deg TVD:  
6718.55 ft

S: 47 MD: 6891.00 ft Inc: 45.10  
deg Az: 356.73 deg TVD:  
6790.39 ft



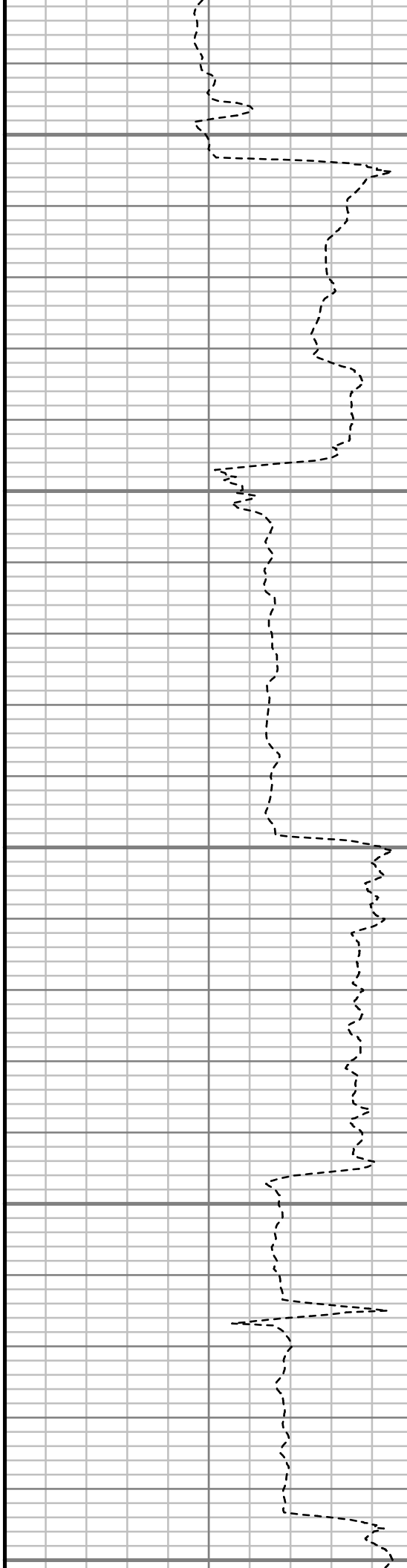
6950

7000

7050

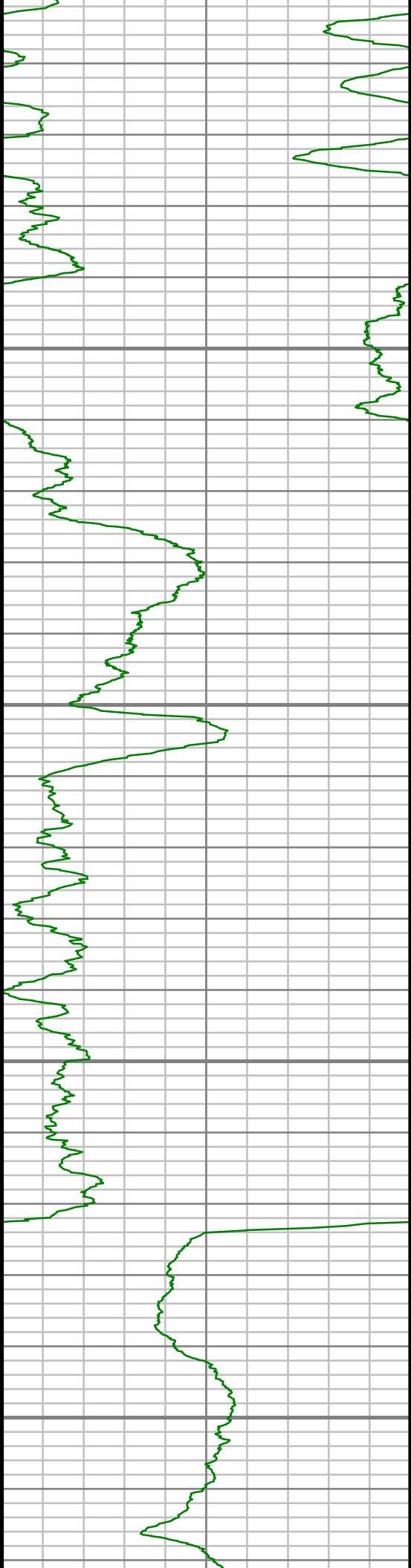
7100

7150



S: 48 MD: 6986.00 ft Inc: 54.87  
deg Az: 357.00 deg TVD:  
6851.40 ft

S: 49 MD: 7081.00 ft Inc: 63.17  
deg Az: 356.60 deg TVD:  
6900.25 ft

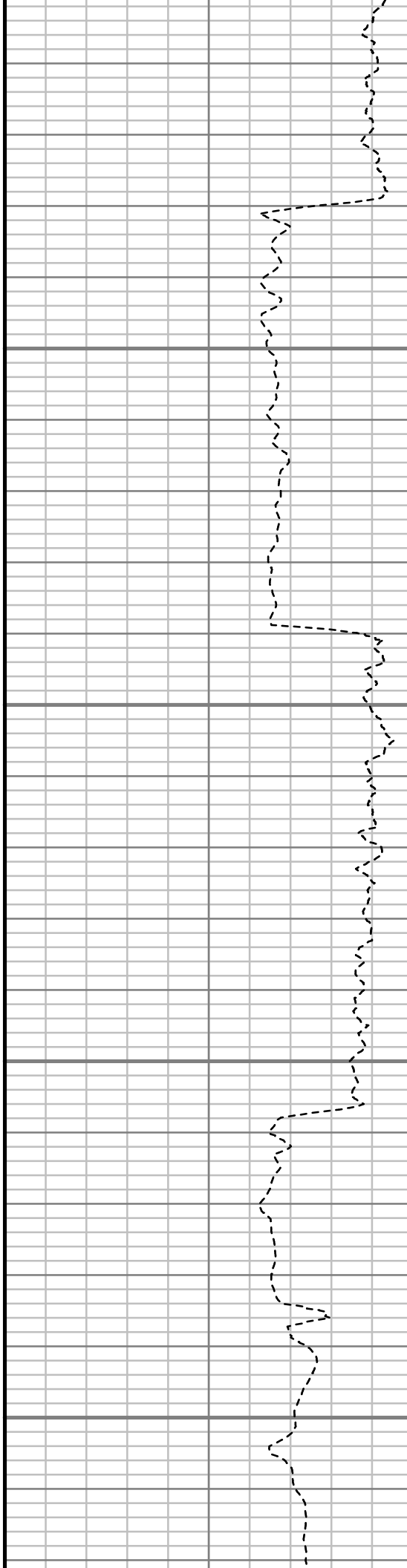


7200

7250

7300

7350



S: 50 MD: 7176.00 ft Inc: 69.86  
deg Az: 357.92 deg TVD:  
6938.09 ft

S: 51 MD: 7271.00 ft Inc: 77.40  
deg Az: 359.40 deg TVD:  
6964.85 ft

S: 52 MD: 7312.00 ft Inc: 83.24  
deg Az: 1.06 deg TVD: 6971.75  
ft

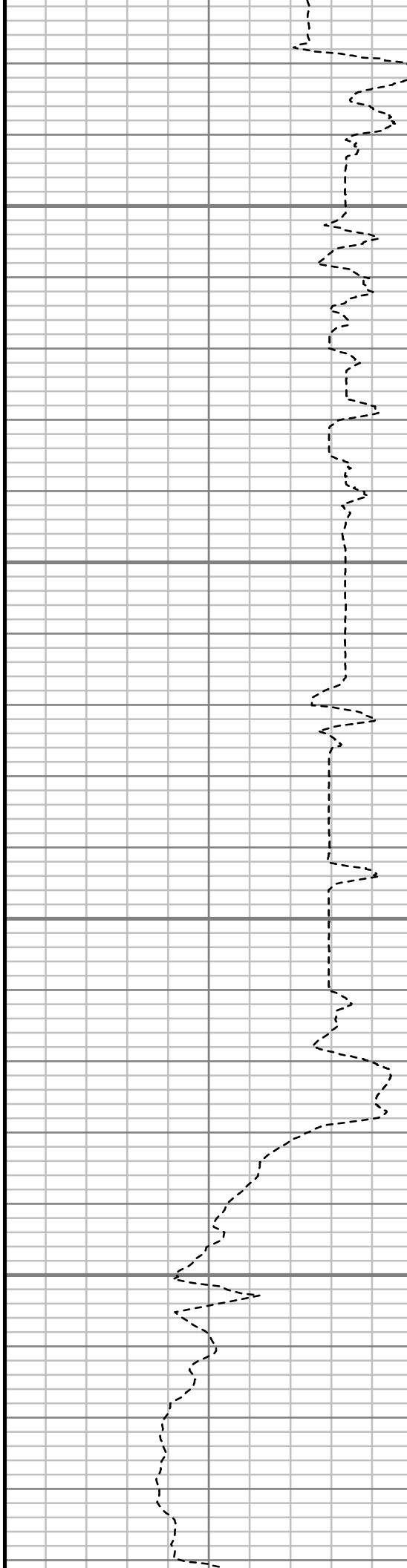


7400

7450

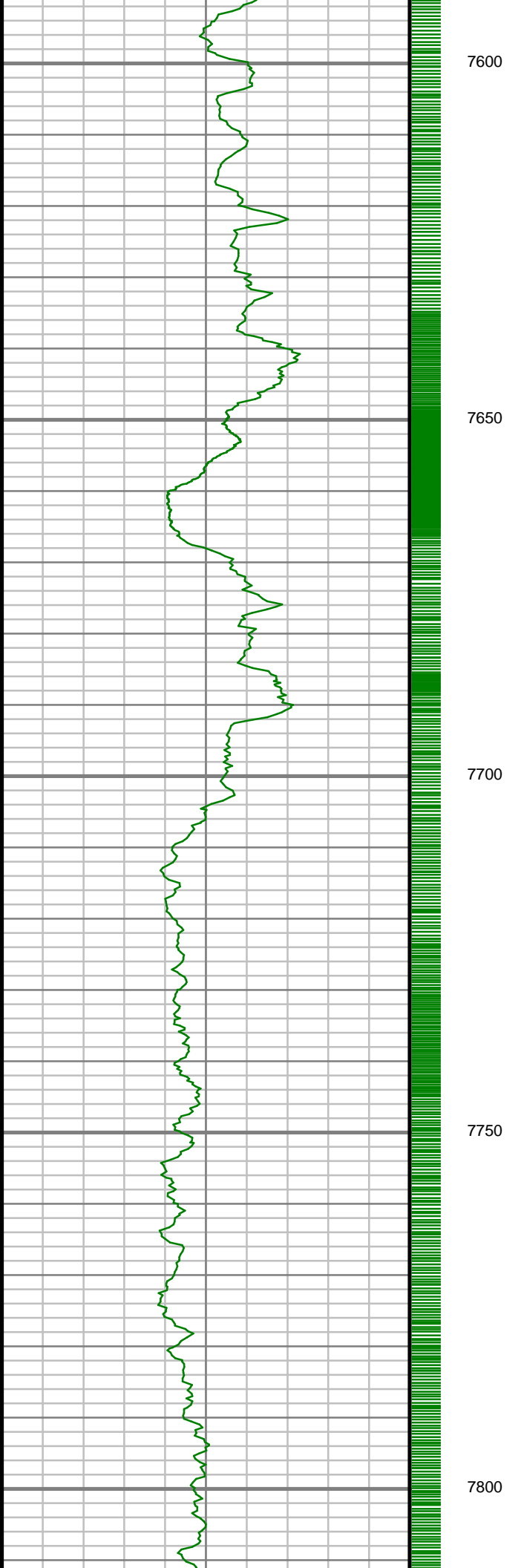
7500

7550



S: 53 MD: 7445.00 ft Inc: 85.46  
deg Az: 1.24 deg TVD: 6984.85  
ft

S: 54 MD: 7535.00 ft Inc: 86.23  
deg Az: 1.84 deg TVD: 6991.37  
ft



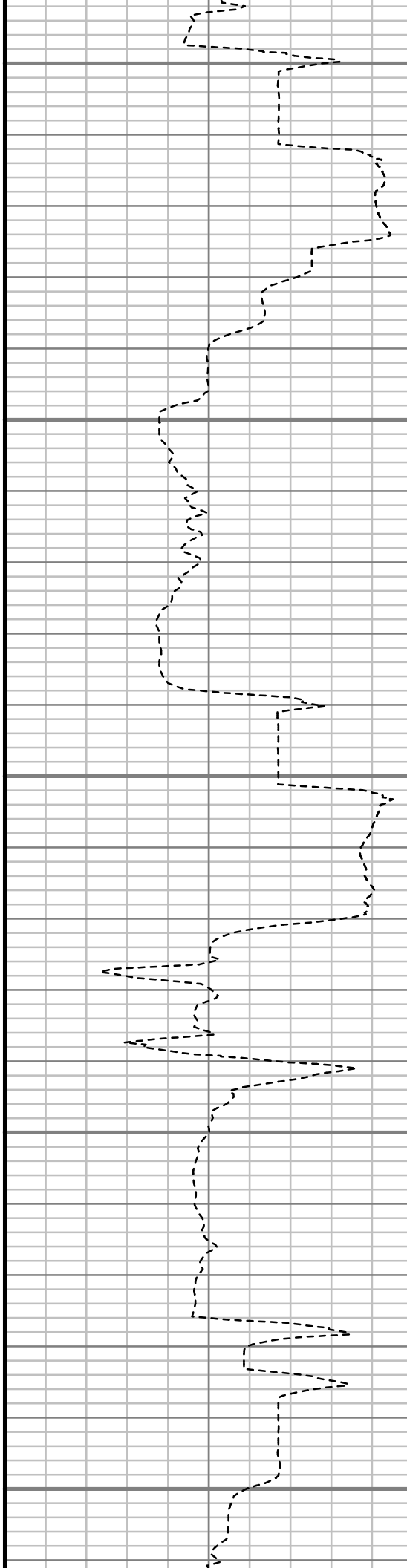
7600

7650

7700

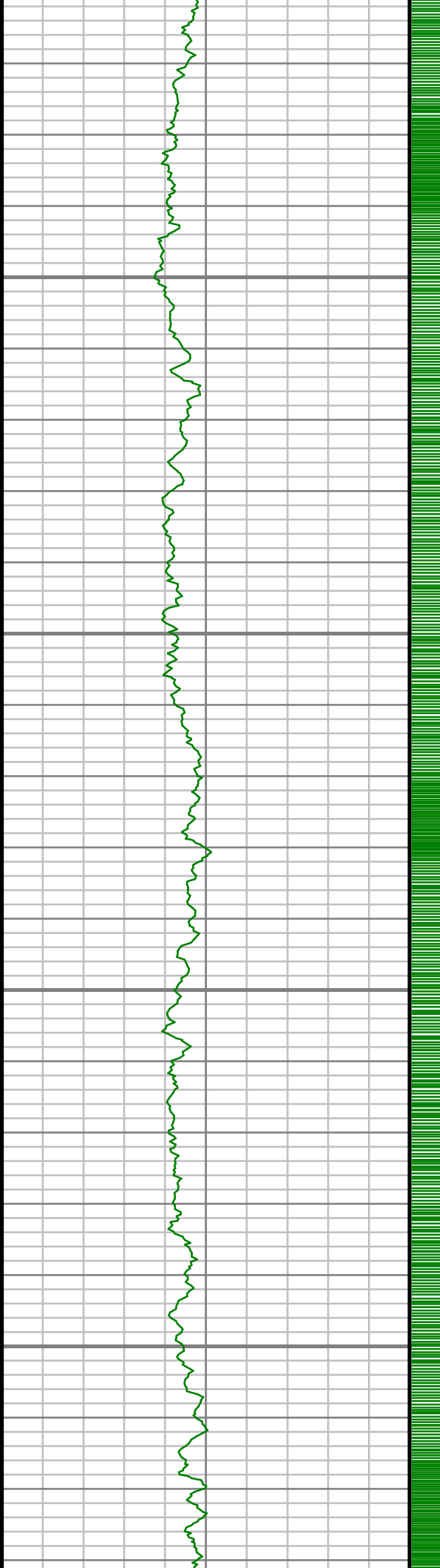
7750

7800



S: 55 MD: 7625.00 ft Inc: 86.77  
deg Az: 2.24 deg TVD: 6996.86  
ft

S: 56 MD: 7720.00 ft Inc: 89.02  
deg Az: 2.96 deg TVD: 7000.34  
ft

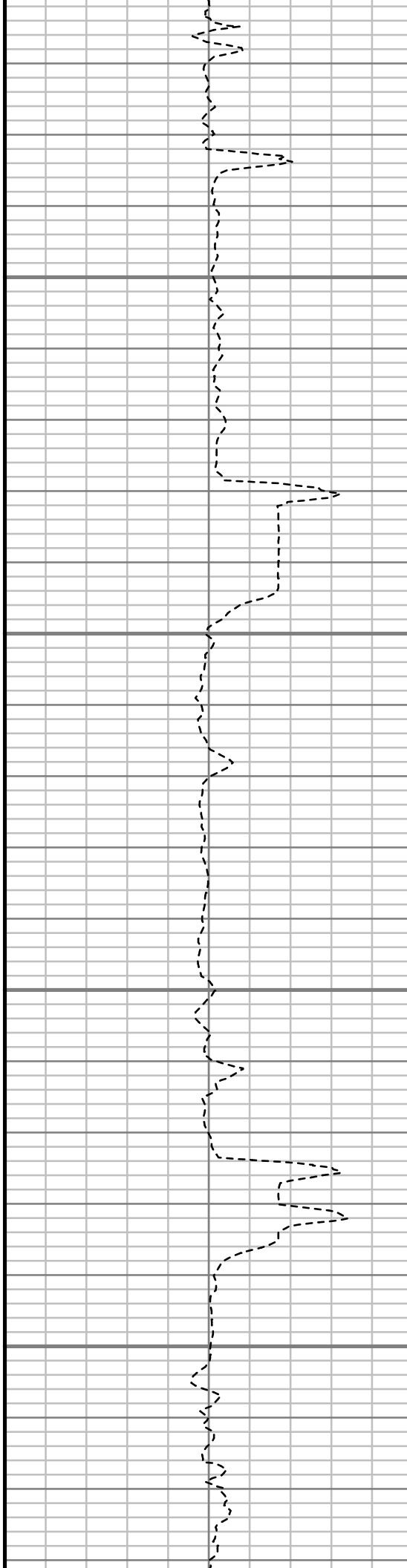


7850

7900

7950

8000

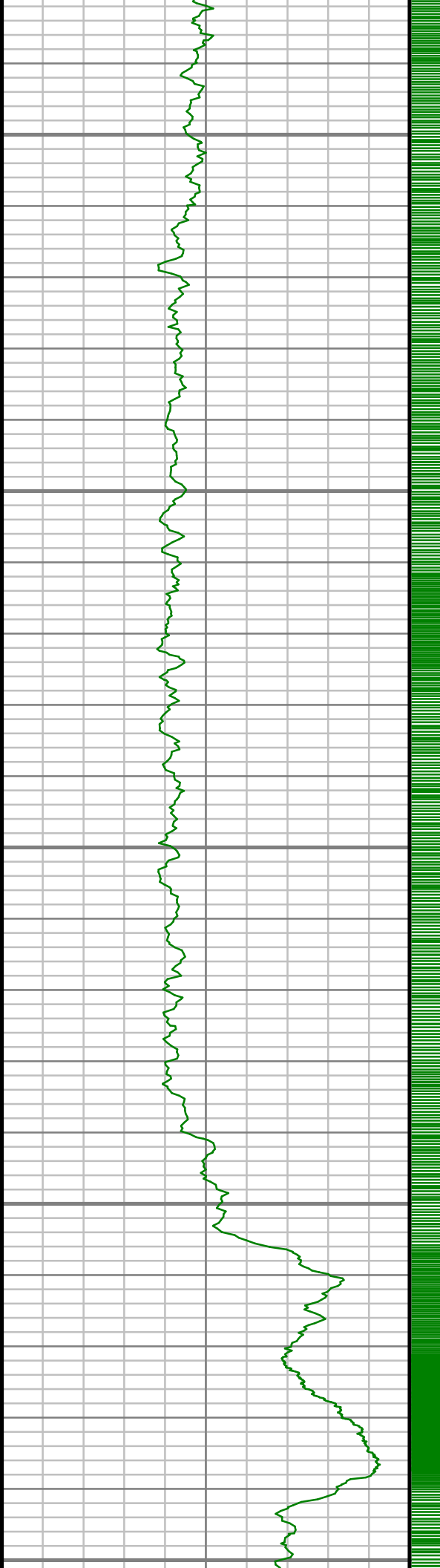


S: 57 MD: 7816.00 ft Inc: 90.37  
deg Az: 2.73 deg TVD: 7000.85  
ft

S: 58 MD: 7911.00 ft Inc: 89.43  
deg Az: 1.54 deg TVD: 7001.02  
ft

S: 59 MD: 8006.00 ft Inc: 90.50  
deg Az: 1.06 deg TVD: 7001.07  
ft





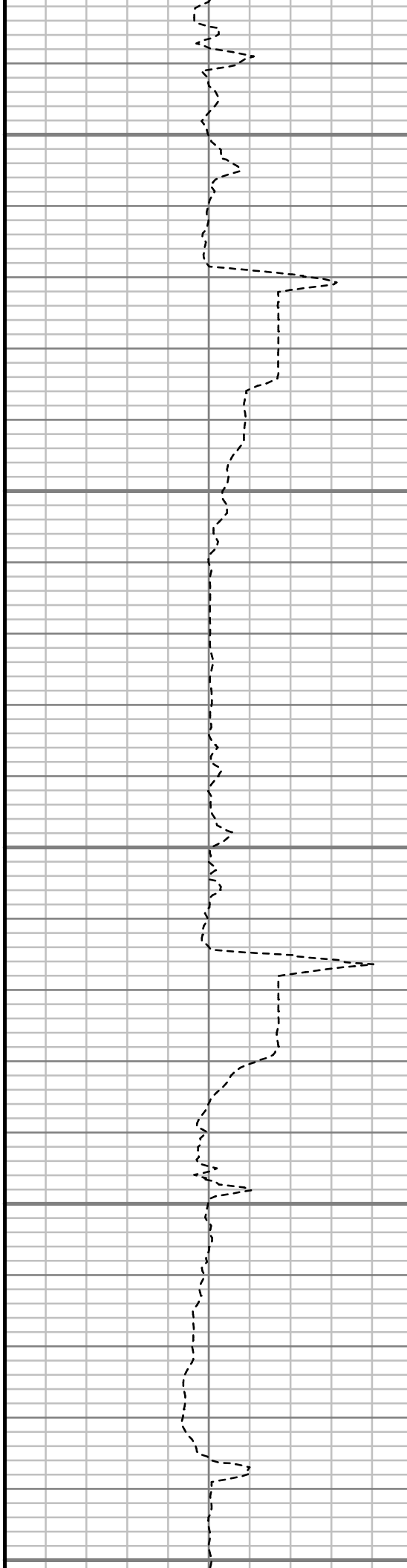
8050

8100

8150

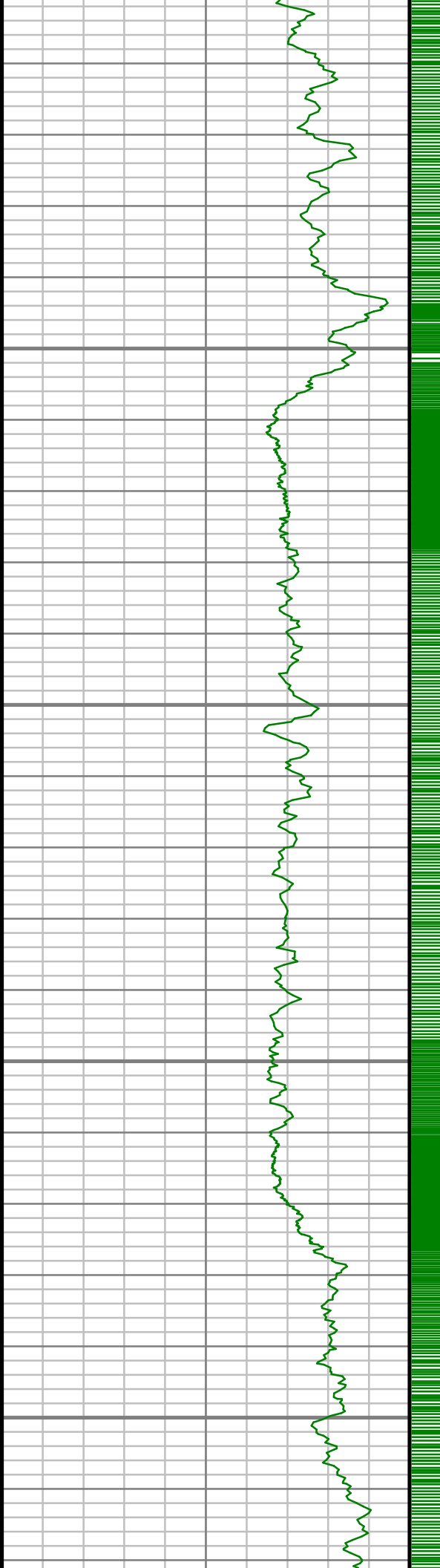
8200

8250



S: 60 MD: 8101.00 ft Inc: 89.76  
deg Az: 359.68 deg TVD:  
7000.85 ft

S: 61 MD: 8196.00 ft Inc: 89.80  
deg Az: 358.29 deg TVD:  
7001.21 ft

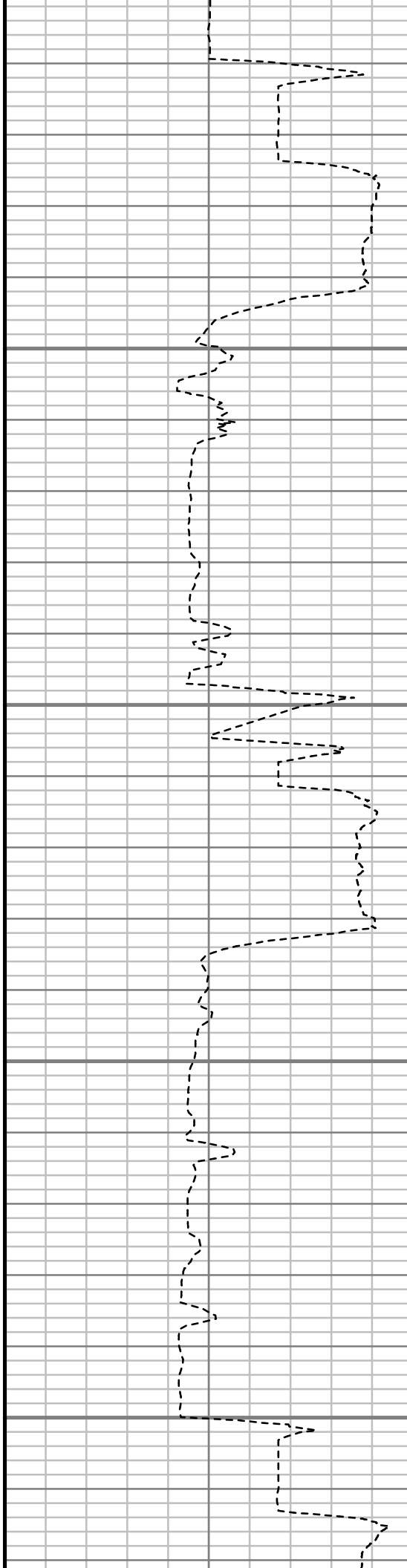


8300

8350

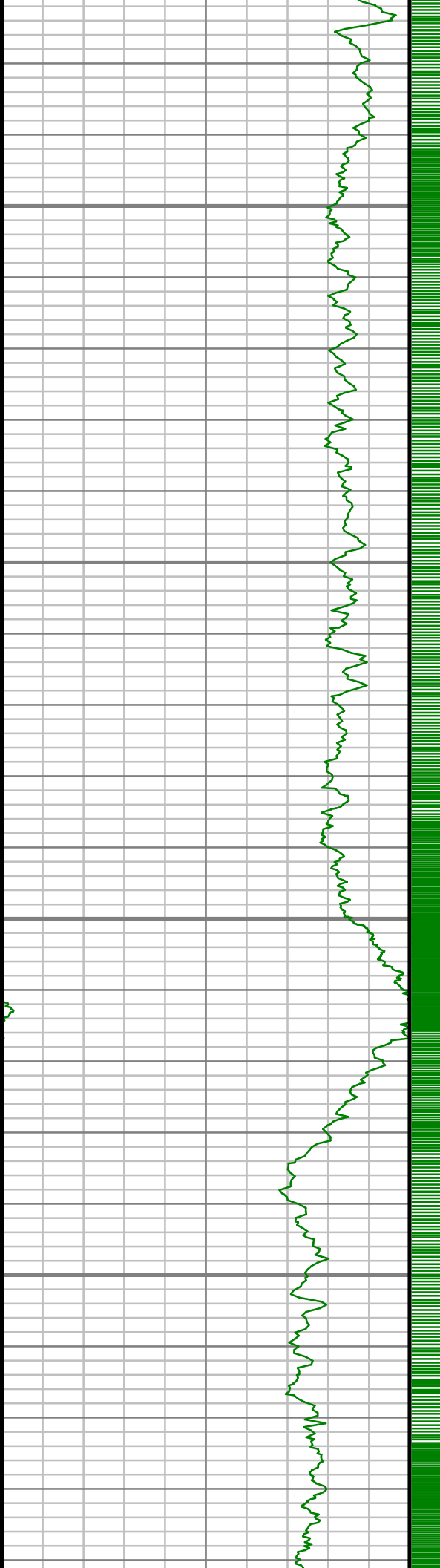
8400

8450



S: 62 MD: 8291.00 ft Inc: 90.10  
deg Az: 359.10 deg TVD:  
7001.30 ft

S: 63 MD: 8386.00 ft Inc: 91.31  
deg Az: 0.07 deg TVD: 7000.13  
ft

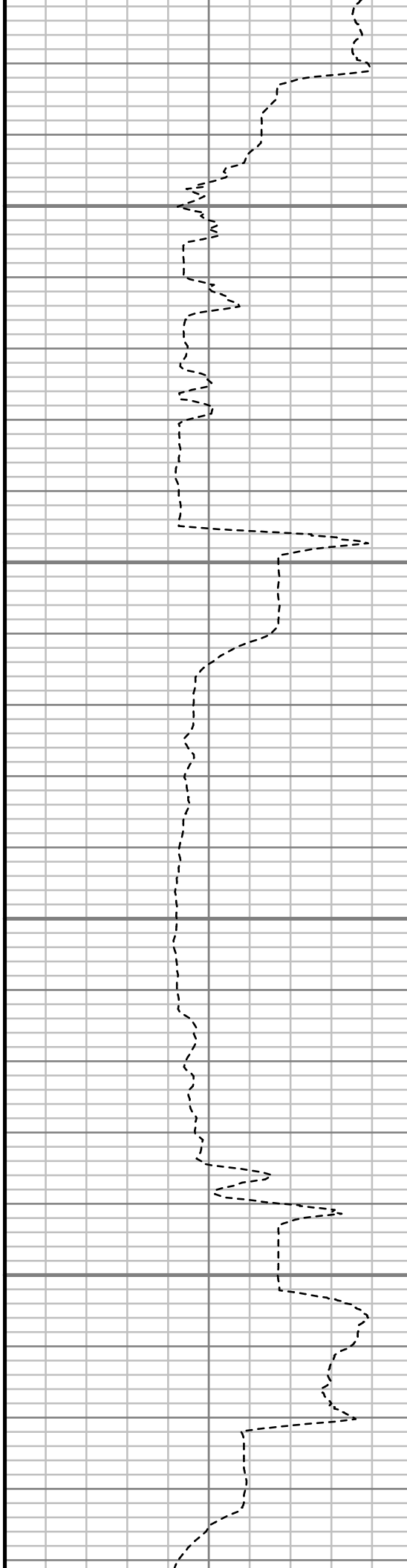


8500

8550

8600

8650



S: 64 MD: 8482.00 ft Inc: 91.08  
deg Az: 1.42 deg TVD: 6998.13  
ft

S: 65 MD: 8577.00 ft Inc: 92.05  
deg Az: 2.86 deg TVD: 6995.54  
ft

S: 66 MD: 8672.00 ft Inc: 90.47  
deg Az: 1.63 deg TVD: 6993.45  
ft



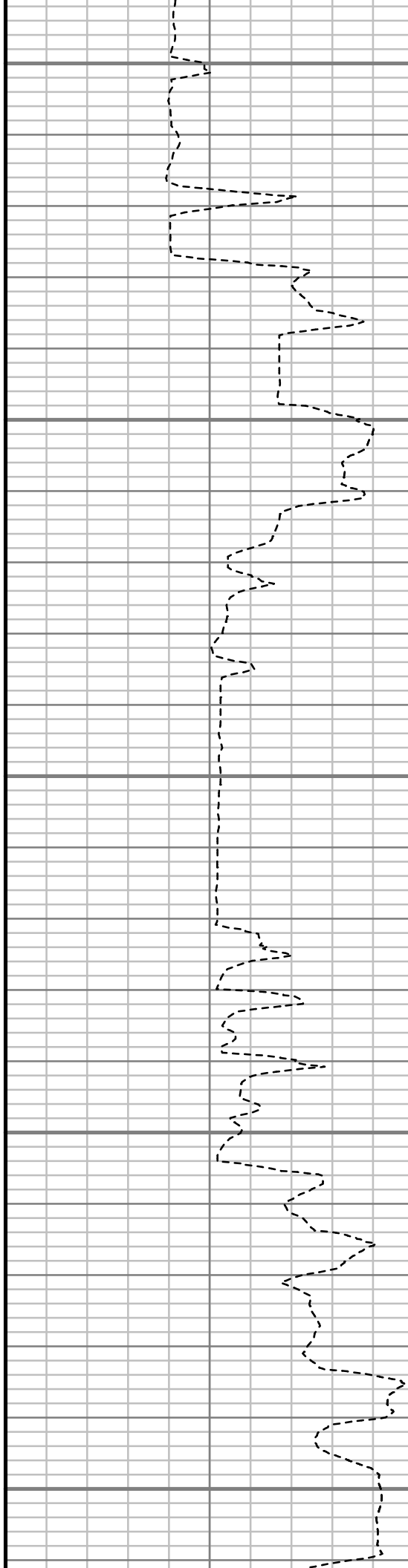
8700

8750

8800

8850

8900



S: 67 MD: 8768.00 ft Inc: 88.89  
deg Az: 1.09 deg TVD: 6993.98  
ft

S: 68 MD: 8863.00 ft Inc: 88.72  
deg Az: 1.47 deg TVD: 6995.96  
ft

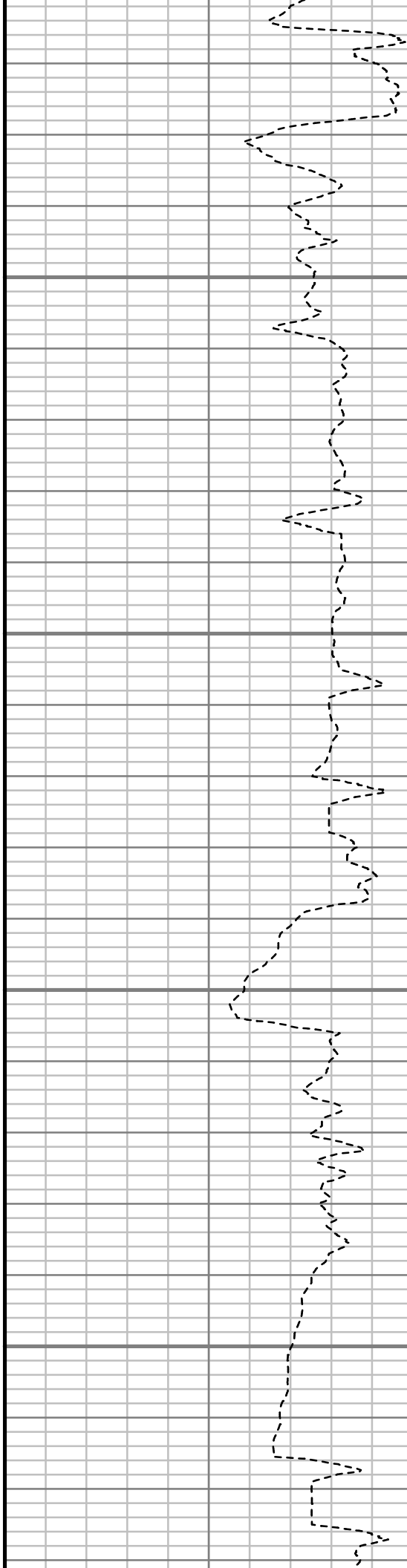


8950

9000

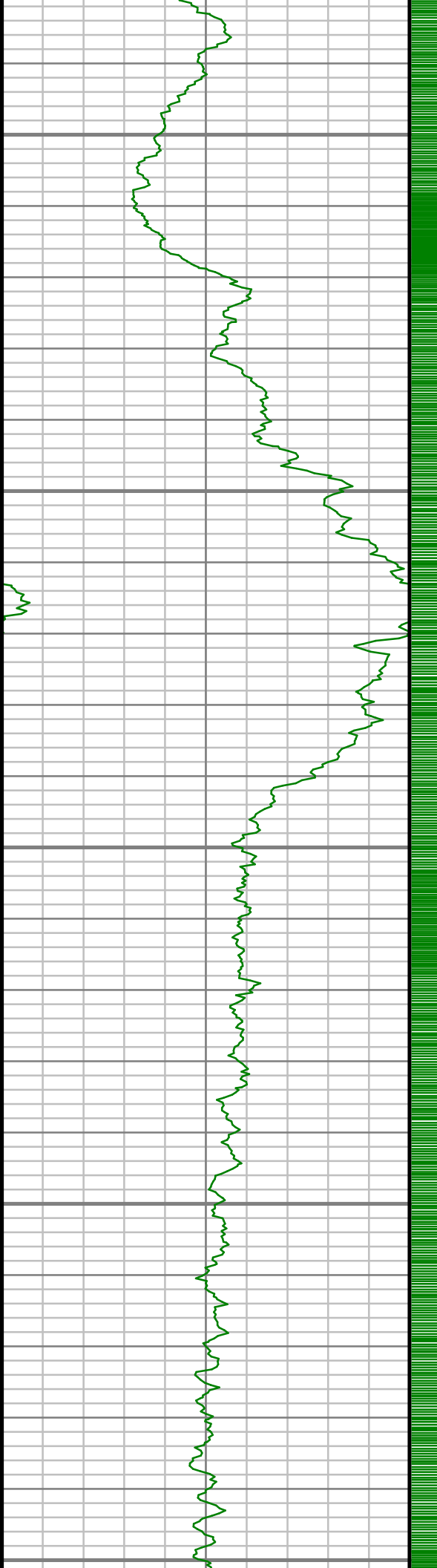
9050

9100



S: 69 MD: 8958.00 ft Inc: 88.66  
deg Az: 1.13 deg TVD: 6998.13  
ft

S: 70 MD: 9053.00 ft Inc: 88.35  
deg Az: 359.86 deg TVD:  
7000.61 ft



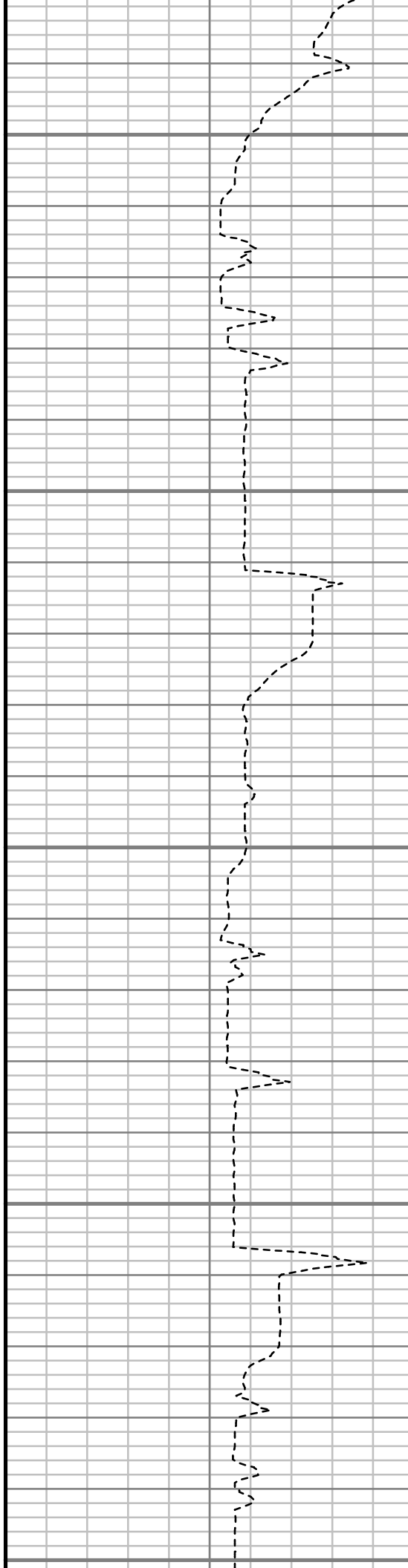
9150

9200

9250

9300

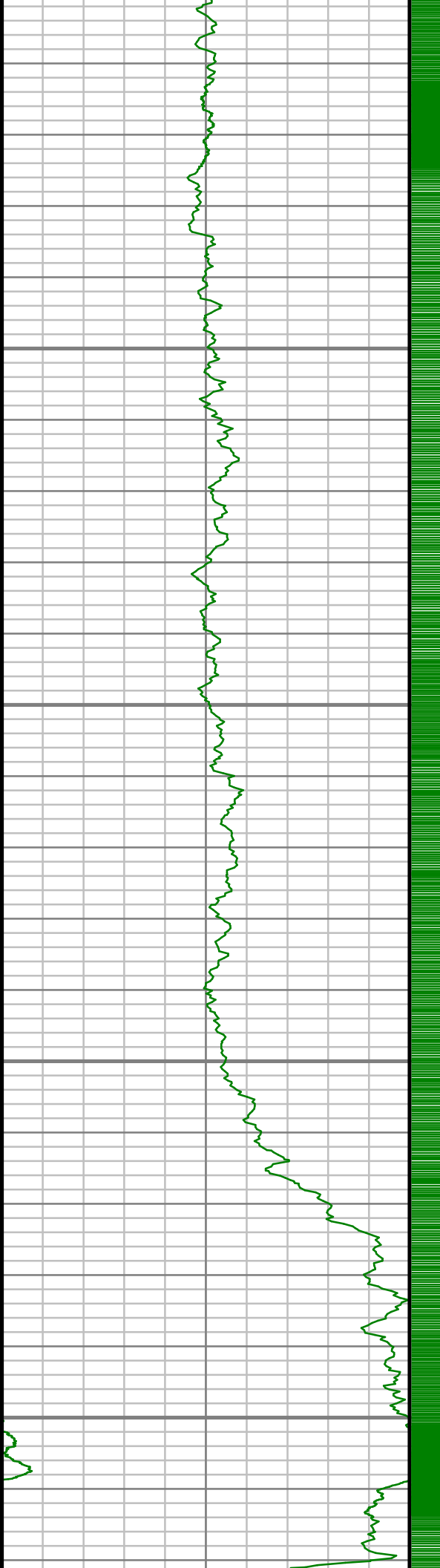
9350



S: 71 MD: 9149.00 ft Inc: 89.77  
deg Az: 359.25 deg TVD:  
7002.19 ft

S: 72 MD: 9244.00 ft Inc: 90.03  
deg Az: 359.19 deg TVD:  
7002.35 ft

S: 73 MD: 9339.00 ft Inc: 90.20  
deg Az: 358.77 deg TVD:  
7002.16 ft

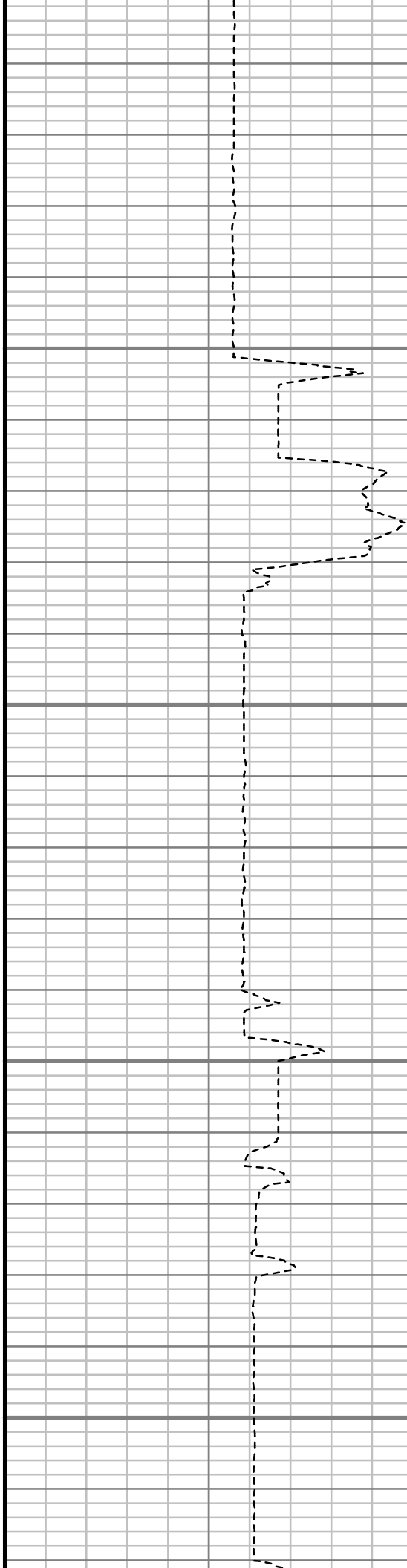


9400

9450

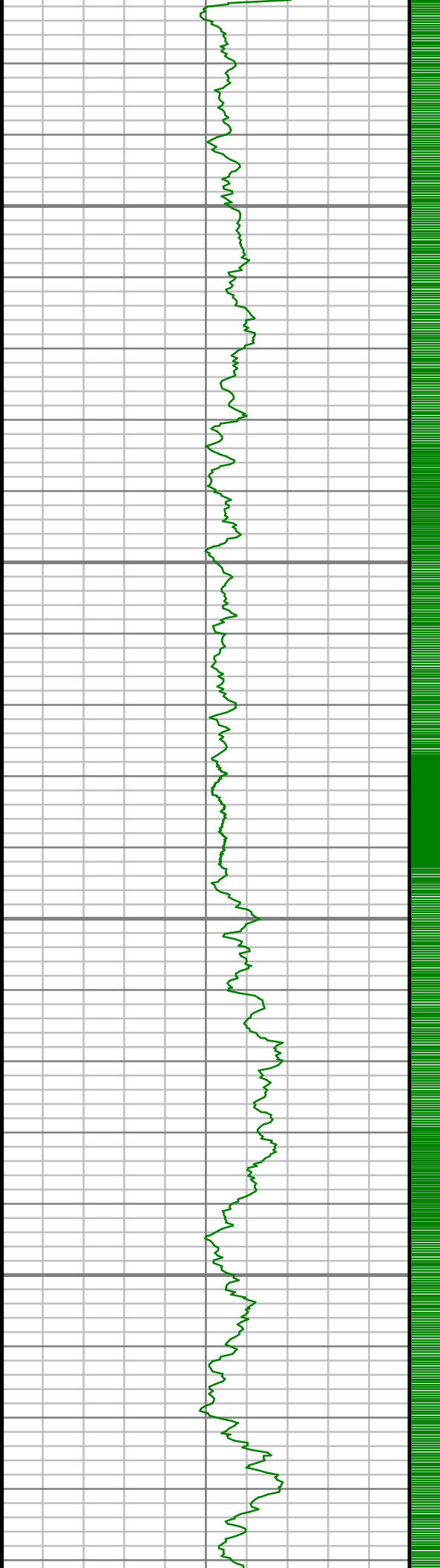
9500

9550



S: 74 MD: 9434.00 ft Inc: 89.50  
deg Az: 358.41 deg TVD:  
7002.41 ft

S: 75 MD: 9529.00 ft Inc: 90.40  
deg Az: 358.72 deg TVD:  
7002.49 ft

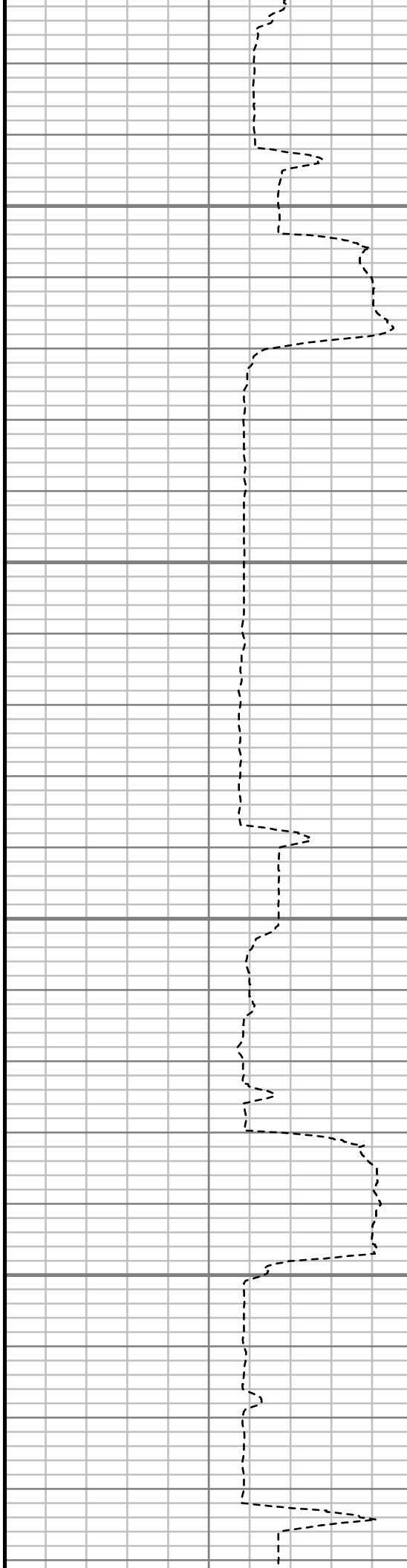


9600

9650

9700

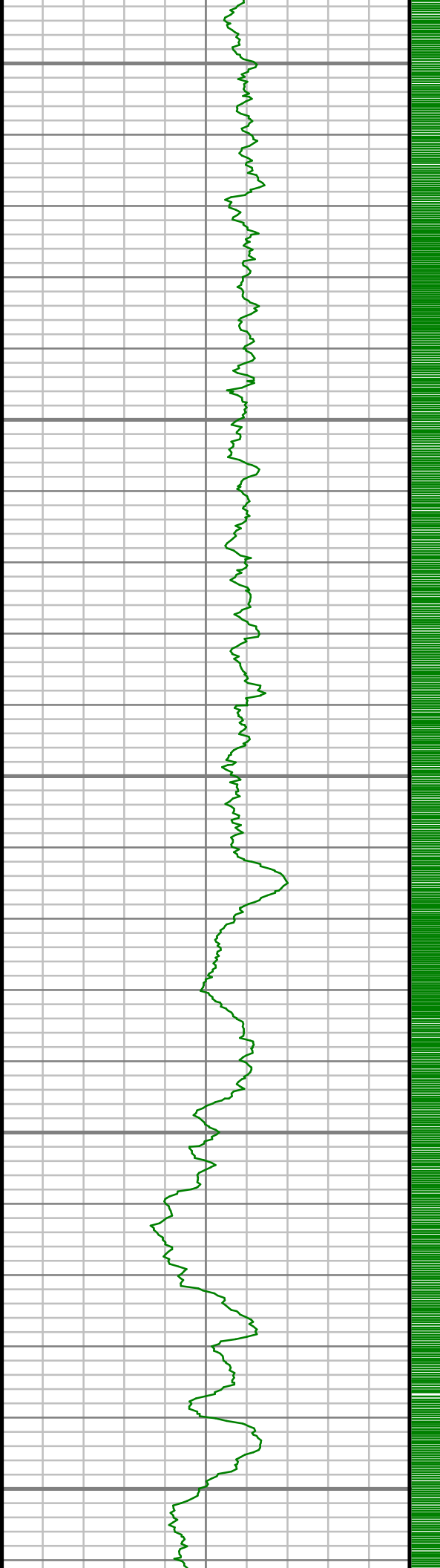
9750



S: 76 MD: 9624.00 ft Inc: 89.43  
deg Az: 359.03 deg TVD:  
7002.63 ft

S: 77 MD: 9720.00 ft Inc: 89.93  
deg Az: 359.09 deg TVD:  
7003.17 ft





9800

9850

9900

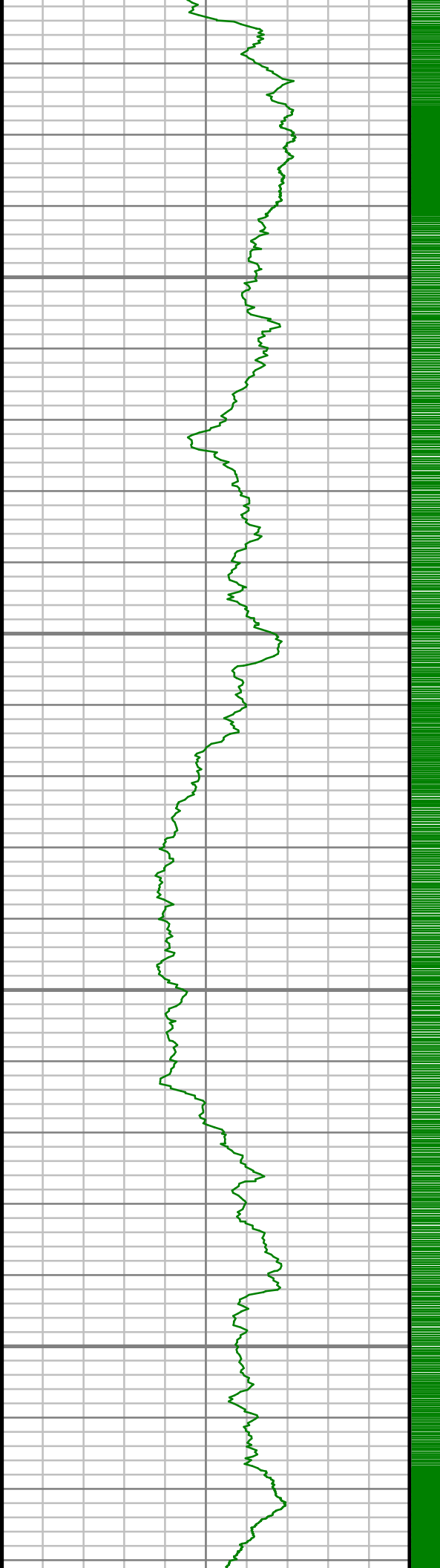
9950

10000

S: 78 MD: 9815.00 ft Inc: 88.32  
deg Az: 359.50 deg TVD:  
7004.62 ft

S: 79 MD: 9910.00 ft Inc: 89.76  
deg Az: 359.87 deg TVD:  
7006.20 ft

S: 80 MD: 10005.00 ft Inc:  
90.97 deg Az: 359.57 deg TVD:  
7005.50 ft

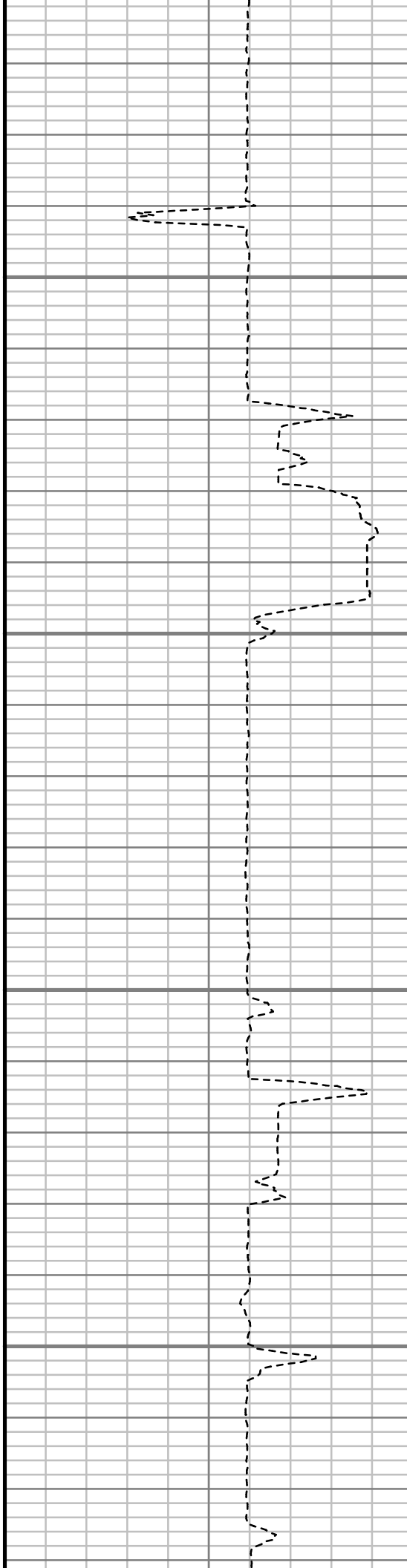


10050

10100

10150

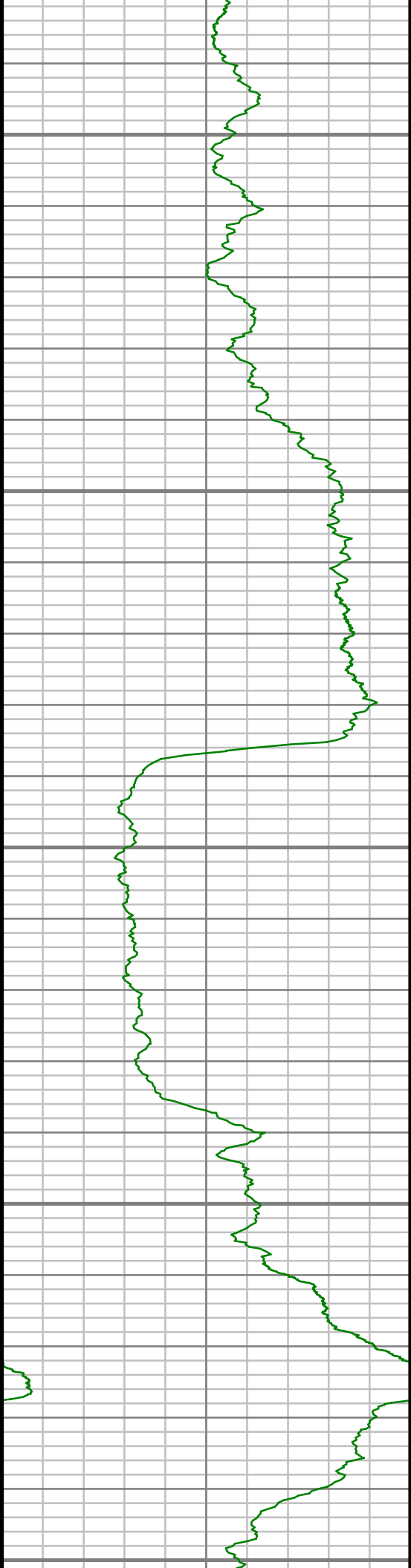
10200



7005.39 ft

S: 81 MD: 10100.00 ft Inc:  
89.80 deg Az: 0.08 deg TVD:  
7004.95 ft

S: 82 MD: 10195.00 ft Inc:  
91.34 deg Az: 0.24 deg TVD:  
7004.00 ft



10250

10300

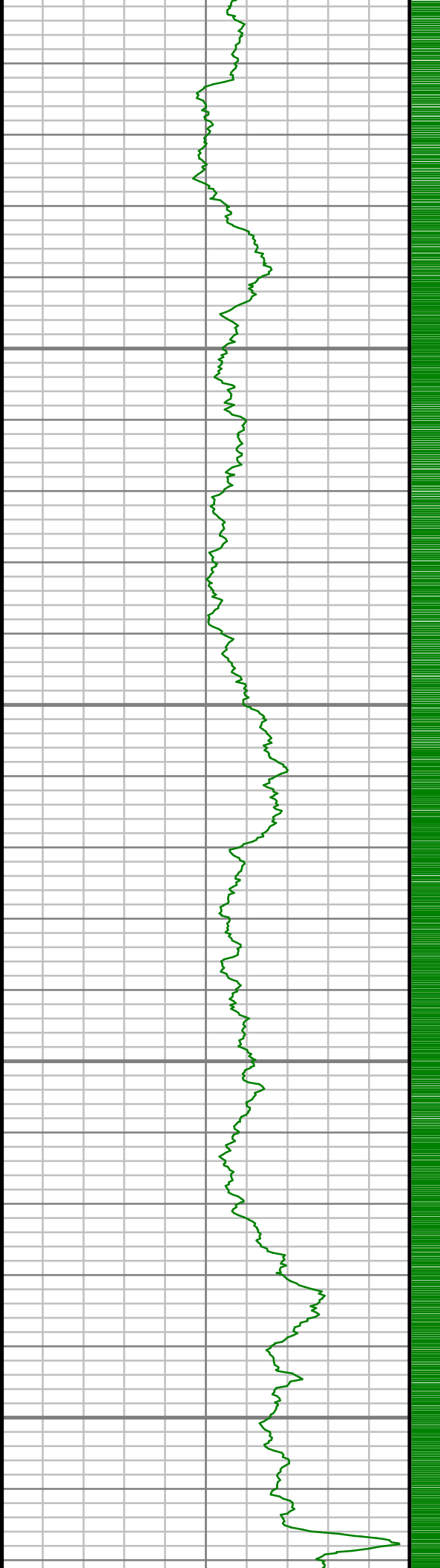
10350

10400

10450

S: 83 MD: 10290.00 ft Inc:  
90.57 deg Az: 0.22 deg TVD:  
7002.41 ft

S: 84 MD: 10385.00 ft Inc:  
89.90 deg Az: 0.19 deg TVD:  
7002.02 ft

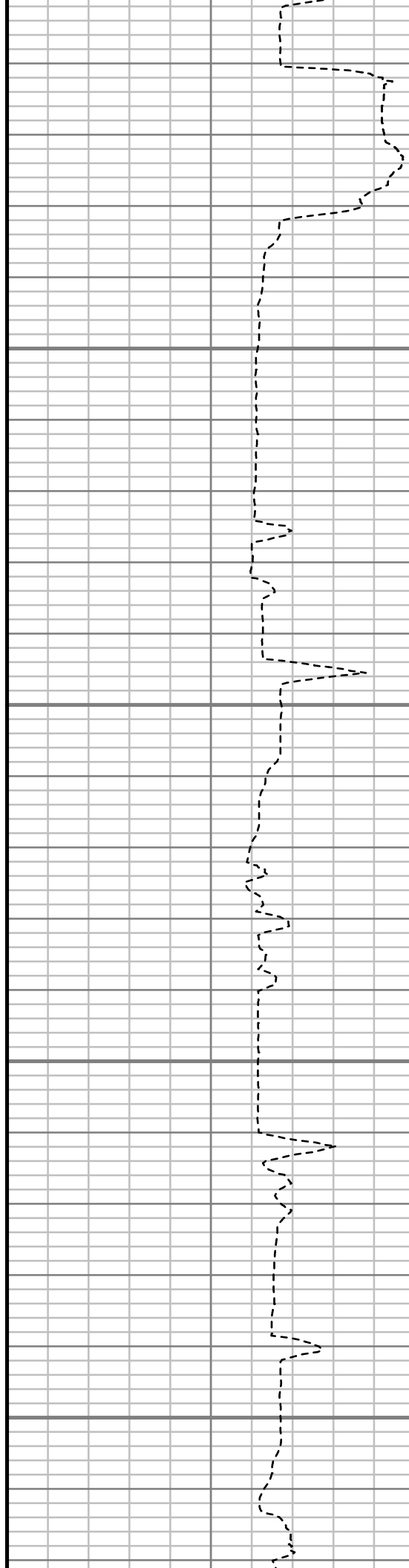


10500

10550

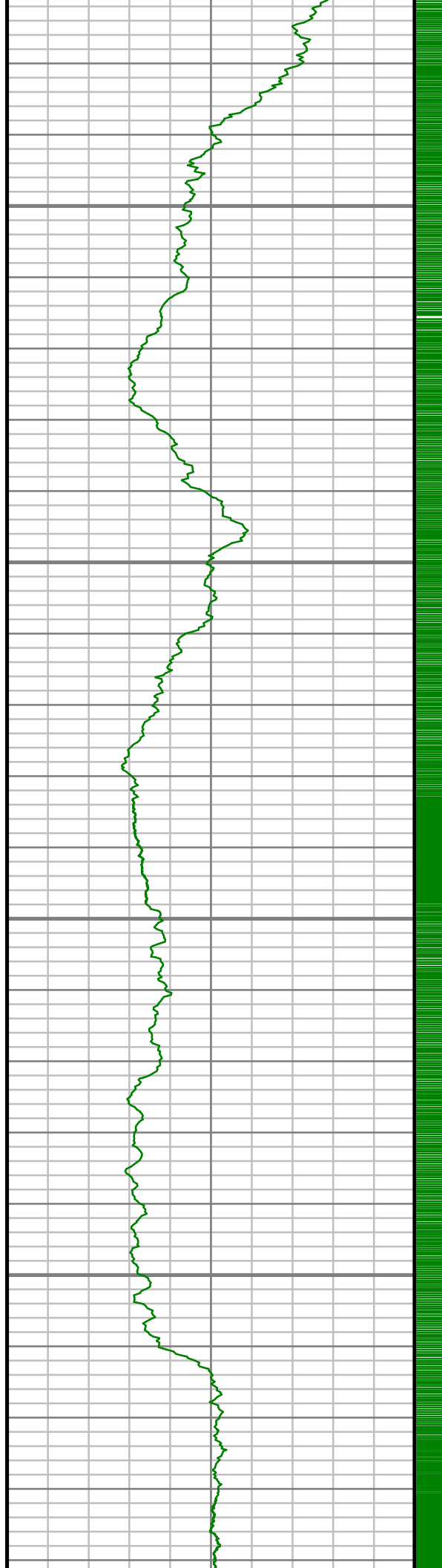
10600

10650



S: 85 MD: 10481.00 ft Inc:  
89.09 deg Az: 1.34 deg TVD:  
7002.87 ft

S: 86 MD: 10576.00 ft Inc:  
89.76 deg Az: 0.92 deg TVD:  
7003.81 ft

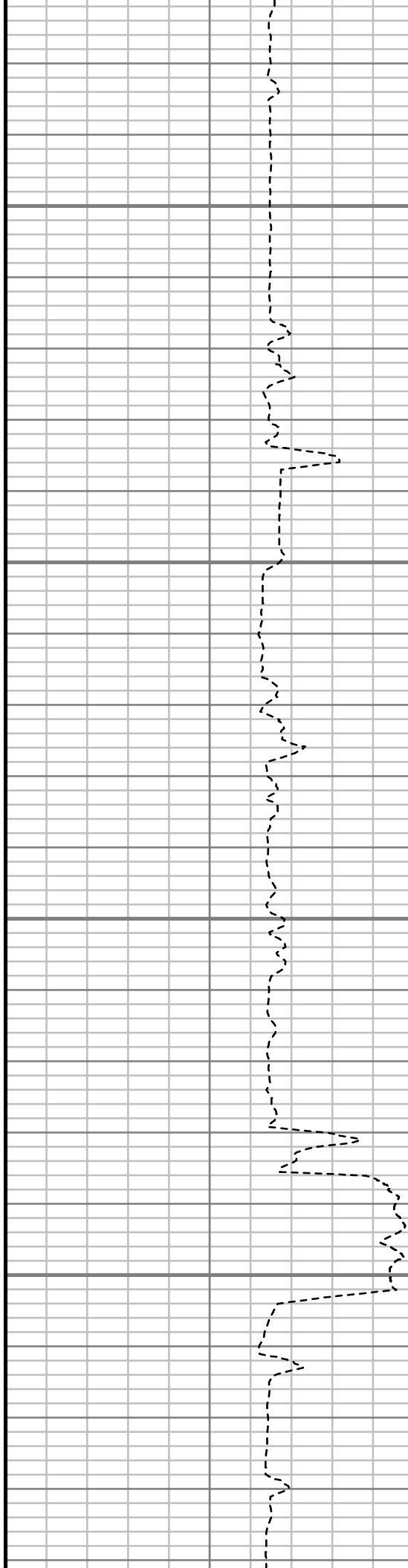


10700

10750

10800

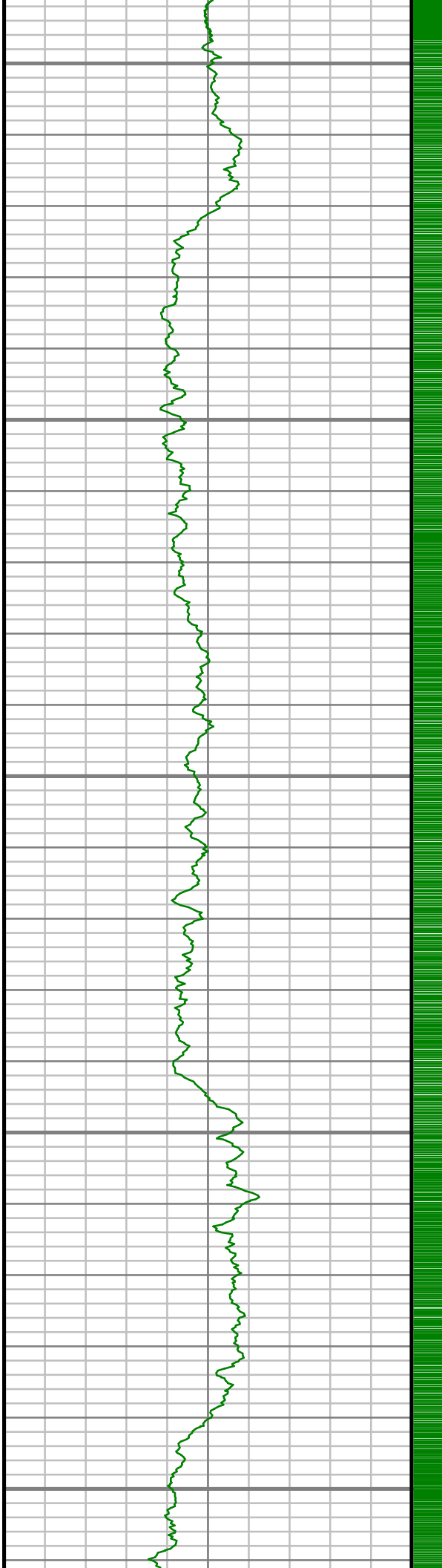
10850



S: 87 MD: 10671.00 ft Inc:  
90.13 deg Az: 359.98 deg TVD:  
7003.90 ft

S: 88 MD: 10766.00 ft Inc:  
90.50 deg Az: 0.16 deg TVD:  
7003.37 ft

S: 89 MD: 10861.00 ft Inc:  
89.90 deg Az: 359.54 deg TVD:  
7003.03 ft



10900

10950

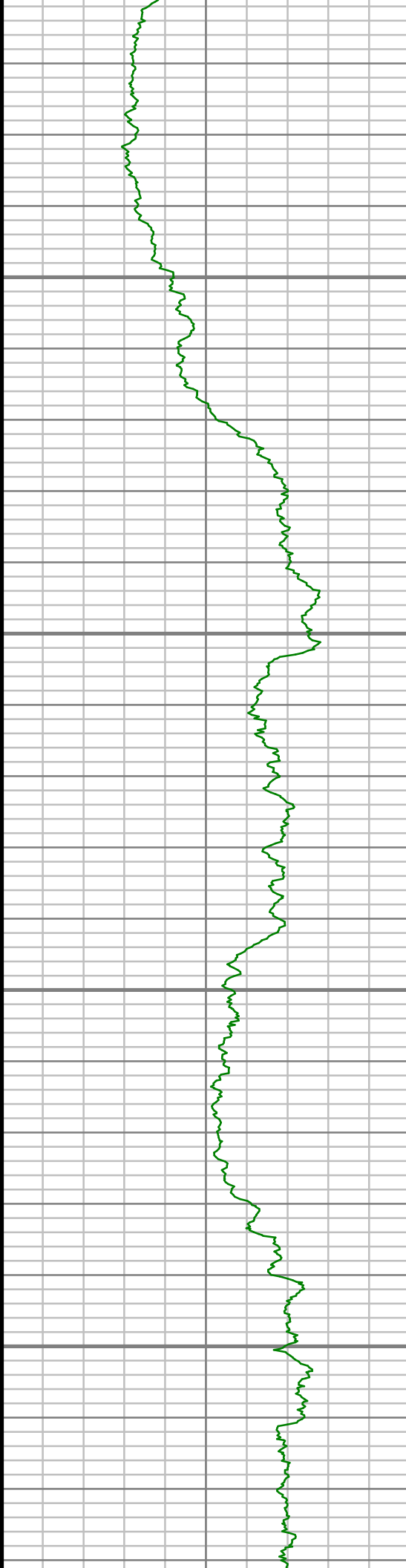
11000

11050

11100

S: 90 MD: 10956.00 ft Inc:  
87.88 deg Az: 0.26 deg TVD:  
7004.87 ft

S: 91 MD: 11051.00 ft Inc:  
87.98 deg Az: 359.48 deg TVD:  
7008.30 ft

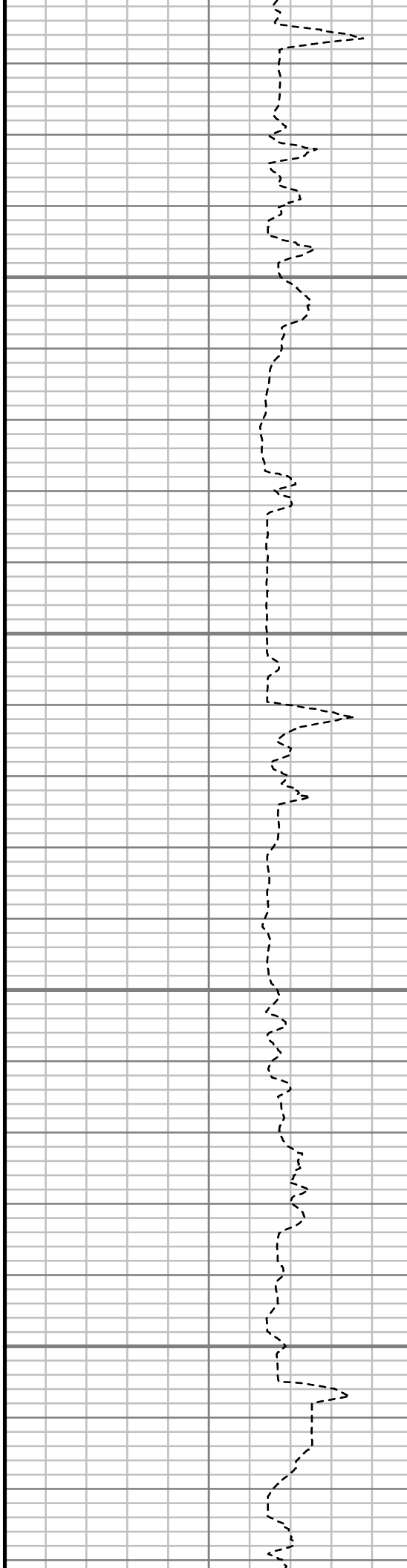


11150

11200

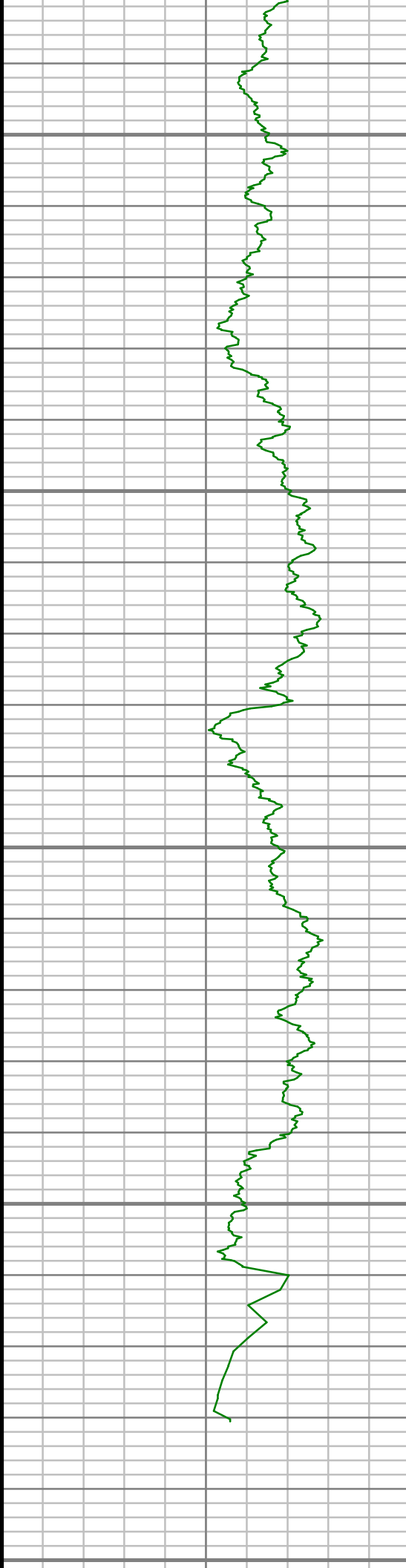
11250

11300



S: 92 MD: 11147.00 ft Inc:  
88.72 deg Az: 358.71 deg TVD:  
7011.06 ft

S: 93 MD: 11242.00 ft Inc:  
89.36 deg Az: 358.76 deg TVD:  
7012.65 ft



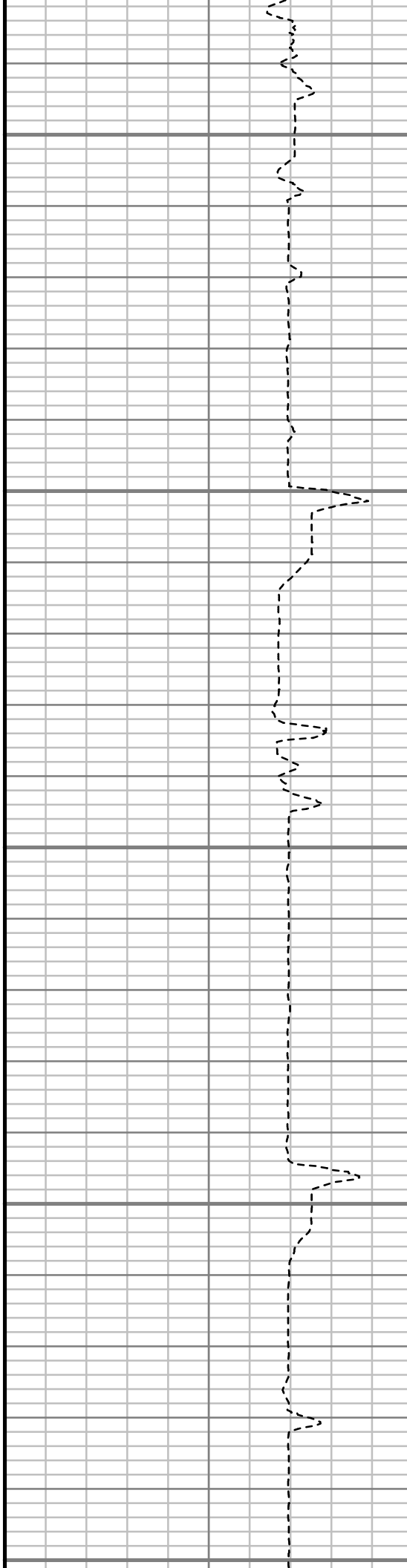
11350

11400

11450

11500

11550

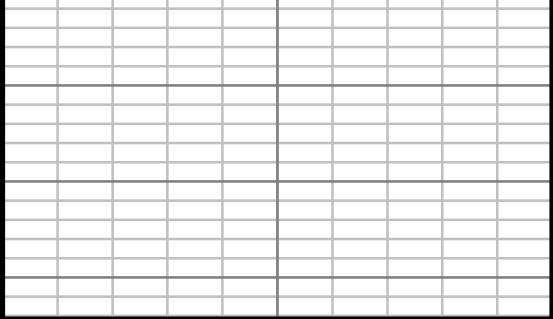


S: 94 MD: 11337.00 ft Inc:  
89.80 deg Az: 358.89 deg TVD:  
7013.34 ft

S: 95 MD: 11432.00 ft Inc:  
90.20 deg Az: 358.64 deg TVD:  
7013.34 ft

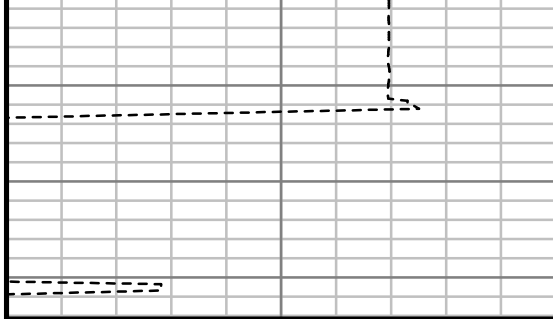
S: 96 MD: 11498.00 ft Inc:  
89.87 deg Az: 358.24 deg TVD:  
7013.30 ft





Gamma Ray (GR)

0 Unit = aapi 150



Rate of Penetration (ROP)

600 Unit = ft/hr 0

Comments

MEASURED DEPTH  
1:240 (ft)



## MWD Survey Report

Well Location	DALE PAD
Well Name	DALE 4G-20H-O264
Survey Date	8/19/2014
Latitude	40°7'3.508"N
Longitude	104°34'18.696"W
Btotal	52547 nT
Dip	66.73 deg
Magnetic Declination	8.39 deg
North Reference	True North
Grid Correction	None
Depth Reference	RKB (25.00 ft)
Calculation Method	Minimum Curvature
Section (VS) Ref	0.00N (ft), 0.00E (ft), 7.61Azim (deg)
Operator(s)	C. WILSON, S. WAXLER, T. LE

### Well Notes

MD	Inc	Azim	TVD	VS	+N/-S	+E/-W	Closure Distance	Closure Direction	DLS
ft	deg	deg	ft	ft	ft	ft	ft	deg	"/100ft
0.00	0.00	0.00	0.00	0.00	0.00	0.00	0.00	0.00	Invalid
140.00	0.70	321.50	140.00	0.60	0.67	-0.54	0.86	321.50	0.50
232.00	0.44	105.03	231.99	0.94	1.02	-0.55	1.16	331.93	1.18
323.00	0.79	17.05	322.99	1.52	1.53	-0.02	1.53	359.10	0.98
414.00	1.32	77.96	413.98	2.49	2.35	1.19	2.64	26.72	1.28
506.00	2.55	116.98	505.93	2.17	1.65	4.05	4.37	67.87	1.89
598.00	2.99	124.28	597.82	0.41	-0.64	7.85	7.88	94.62	0.61
689.00	2.99	132.71	688.70	-2.02	-3.58	11.56	12.10	107.22	0.48
781.00	4.31	121.20	780.51	-4.78	-7.00	16.28	17.72	113.27	1.63
873.00	4.75	120.85	872.22	-7.67	-10.75	22.51	24.94	115.52	0.48
964.00	4.66	123.13	962.91	-10.75	-14.70	28.84	32.37	117.01	0.23
1056.00	5.19	116.10	1054.57	-13.68	-18.58	35.71	40.25	117.48	0.87
1177.00	6.33	120.41	1174.96	-18.01	-24.36	46.38	52.39	117.71	1.01
1269.00	9.15	125.68	1266.11	-23.42	-31.20	56.70	64.72	118.82	3.15
1361.00	8.97	123.75	1356.97	-30.02	-39.45	68.61	79.15	119.90	0.38
1452.00	10.82	125.51	1446.61	-37.14	-48.36	81.47	94.74	120.69	2.06
1524.00	10.48	126.30	1517.37	-43.45	-56.16	92.24	108.00	121.33	0.52
1707.00	10.93	122.85	1697.19	-58.83	-75.42	120.23	141.92	122.10	0.43
1890.00	10.95	120.92	1876.86	-73.11	-93.76	149.71	176.64	122.06	0.20

MD	Inc	Azim	TVD	VS	+N/-S	+E/-W	Closure Distance	Closure Direction	DLS
ft	deg	deg	ft	ft	ft	ft	ft	deg	°/100ft
2073.00	10.34	117.58	2056.72	-85.59	-110.29	179.17	210.39	121.61	0.47
2255.00	9.89	114.24	2235.89	-95.64	-124.26	207.89	242.20	120.87	0.41
2438.00	8.70	115.92	2416.48	-104.48	-136.77	234.67	271.61	120.23	0.67
2621.00	10.64	121.99	2596.88	-115.81	-151.77	261.44	302.30	120.14	1.20
2805.00	10.02	117.18	2777.90	-128.18	-168.08	290.09	335.26	120.09	0.58
2995.00	9.35	116.61	2965.19	-138.75	-182.55	318.60	367.19	119.81	0.36
3184.00	9.90	116.59	3151.53	-149.03	-196.70	346.85	398.74	119.56	0.29
3374.00	9.16	118.03	3338.91	-159.62	-211.11	374.80	430.17	119.39	0.41
3563.00	10.69	124.12	3525.08	-172.69	-228.01	402.59	462.67	119.53	0.98
3753.00	9.30	120.51	3712.19	-186.53	-245.69	430.40	495.59	119.72	0.80
3943.00	10.92	123.31	3899.24	-200.31	-263.37	458.67	528.91	119.86	0.89
4131.00	11.31	118.13	4083.72	-214.50	-281.84	489.81	565.11	119.92	0.57
4320.00	9.40	115.59	4269.63	-225.76	-297.25	520.08	599.03	119.75	1.04
4510.00	11.66	120.40	4456.43	-237.98	-313.66	550.63	633.70	119.67	1.27
4701.00	9.02	116.77	4644.31	-250.37	-330.17	580.65	667.96	119.62	1.42
4891.00	5.25	116.95	4832.80	-258.14	-340.83	601.70	691.53	119.53	1.99
5081.00	1.55	357.06	5022.55	-258.49	-342.19	609.32	698.83	119.32	3.25
5271.00	0.95	336.56	5212.51	-254.61	-338.18	608.57	696.22	119.06	0.39

MD	Inc	Azim	TVD	VS	+N/-S	+E/-W	Closure Distance	Closure Direction	DLS
ft	deg	deg	ft	ft	ft	ft	ft	deg	°/100ft
5462.00	0.69	353.46	5403.49	-252.14	-335.59	607.81	694.30	118.90	0.18
5652.00	0.84	14.85	5593.47	-249.65	-333.10	608.03	693.30	118.72	0.17
5843.00	0.39	46.94	5784.46	-247.75	-331.30	608.87	693.17	118.55	0.29
6033.00	0.15	21.46	5974.46	-247.00	-330.62	609.44	693.35	118.48	0.14
6224.00	0.79	79.37	6165.45	-246.35	-330.15	610.83	694.34	118.39	0.38
6415.00	1.29	59.65	6356.42	-244.62	-328.82	613.97	696.48	118.17	0.32
6510.00	3.55	344.53	6451.35	-241.26	-325.45	614.11	695.02	117.92	3.63
6605.00	12.34	343.38	6545.34	-229.27	-312.86	610.41	685.92	117.14	9.26
6700.00	23.49	350.96	6635.60	-201.78	-284.34	604.51	668.05	115.19	11.96
6796.00	36.54	353.28	6718.55	-155.56	-236.86	598.13	643.32	111.60	13.65
6891.00	45.10	356.73	6790.39	-95.00	-175.06	592.90	618.20	106.45	9.31
6986.00	54.87	357.00	6851.40	-23.60	-102.49	588.93	597.78	99.87	10.29
7081.00	63.17	356.60	6900.25	56.33	-21.25	584.37	584.76	92.08	8.74
7176.00	69.86	357.92	6938.09	141.99	65.73	580.23	583.94	83.54	7.16
7271.00	77.40	359.40	6964.85	231.97	156.79	578.13	599.01	74.83	8.07
7312.00	83.24	1.06	6971.75	272.03	197.19	578.29	610.99	71.17	14.80
7445.00	85.46	1.24	6984.85	403.54	329.50	580.95	667.89	60.44	1.67
7535.00	86.23	1.84	6991.37	492.80	419.23	583.36	718.38	54.30	1.09

MD	Inc	Azim	TVD	VS	+N/-S	+E/-W	Closure Distance	Closure Direction	DLS
ft	deg	deg	ft	ft	ft	ft	ft	deg	°/100ft
7625.00	86.77	2.24	6996.86	582.20	509.01	586.57	776.63	49.05	0.75
7720.00	89.02	2.96	7000.34	676.77	603.84	590.87	844.84	44.38	2.48
7816.00	90.37	2.73	7000.85	772.43	699.72	595.64	918.91	40.41	1.42
7911.00	89.43	1.54	7001.02	867.00	794.65	599.18	995.23	37.02	1.60
8006.00	90.50	1.06	7001.07	961.42	889.62	601.34	1073.80	34.06	1.24
8101.00	89.76	359.68	7000.85	1055.66	984.62	601.96	1154.05	31.44	1.64
8196.00	89.80	358.29	7001.21	1149.59	1079.60	600.28	1235.26	29.07	1.46
8291.00	90.10	359.10	7001.30	1243.44	1174.57	598.12	1318.09	26.99	0.91
8386.00	91.31	0.07	7000.13	1337.50	1269.56	597.44	1403.11	25.20	1.63
8482.00	91.08	1.42	6998.13	1432.79	1365.53	598.69	1491.01	23.67	1.42
8577.00	92.05	2.86	6995.54	1527.32	1460.43	602.24	1579.72	22.41	1.82
8672.00	90.47	1.63	6993.45	1621.87	1555.32	605.95	1669.20	21.29	2.11
8768.00	88.89	1.09	6993.98	1717.30	1651.29	608.23	1759.75	20.22	1.74
8863.00	88.72	1.47	6995.96	1811.70	1746.25	610.35	1849.84	19.27	0.43
8958.00	88.66	1.13	6998.13	1906.10	1841.20	612.50	1940.40	18.40	0.36
9053.00	88.35	359.86	7000.61	2000.33	1936.16	613.32	2030.98	17.58	1.38
9149.00	89.77	359.25	7002.19	2095.37	2032.14	612.57	2122.46	16.77	1.60
9244.00	90.03	359.19	7002.35	2189.35	2127.13	611.28	2213.22	16.03	0.29

MD	Inc	Azim	TVD	VS	+N/-S	+E/-W	Closure Distance	Closure Direction	DLS
ft	deg	deg	ft	ft	ft	ft	ft	deg	°/100ft
9339.00	90.20	358.77	7002.16	2283.27	2222.12	609.59	2304.22	15.34	0.48
9434.00	89.50	358.41	7002.41	2377.10	2317.09	607.25	2395.34	14.69	0.84
9529.00	90.40	358.72	7002.49	2470.91	2412.06	604.87	2486.74	14.08	1.01
9624.00	89.43	359.03	7002.63	2564.81	2507.04	603.01	2578.54	13.52	1.08
9720.00	89.93	359.09	7003.17	2659.74	2603.02	601.44	2671.60	13.01	0.53
9815.00	88.32	359.50	7004.62	2753.73	2698.00	600.27	2763.97	12.54	1.75
9910.00	89.76	359.87	7006.20	2847.81	2792.98	599.75	2856.65	12.12	1.57
10005.00	90.97	359.57	7005.59	2941.91	2887.98	599.29	2949.50	11.72	1.31
10100.00	89.80	0.08	7004.95	3036.03	2982.97	598.99	3042.52	11.35	1.35
10195.00	91.34	0.24	7004.00	3130.22	3077.97	599.25	3135.76	11.02	1.64
10290.00	90.57	0.22	7002.41	3224.41	3172.95	599.63	3229.11	10.70	0.81
10385.00	89.90	0.19	7002.02	3318.62	3267.95	599.96	3322.57	10.40	0.71
10481.00	89.09	1.34	7002.87	3413.93	3363.93	601.24	3417.24	10.13	1.47
10576.00	89.76	0.92	7003.81	3508.32	3458.91	603.12	3511.10	9.89	0.83
10671.00	90.13	359.98	7003.90	3602.58	3553.91	603.87	3604.85	9.64	1.06
10766.00	90.50	0.16	7003.37	3696.75	3648.90	603.98	3698.55	9.40	0.43
10861.00	89.90	359.54	7003.03	3790.88	3743.90	603.73	3792.27	9.16	0.91
10956.00	87.88	0.26	7004.87	3885.00	3838.88	603.56	3886.04	8.94	2.26

MD	Inc	Azim	TVD	VS	+N/-S	+E/-W	Closure Distance	Closure Direction	DLS
ft	deg	deg	ft	ft	ft	ft	ft	deg	°/100ft
11051.00	87.98	359.48	7008.30	3979.07	3933.82	603.34	3979.82	8.72	0.83
11147.00	88.72	358.71	7011.06	4073.97	4029.76	601.82	4074.45	8.49	1.11
11242.00	89.36	358.76	7012.65	4167.82	4124.73	599.73	4168.10	8.27	0.67
11337.00	89.80	358.89	7013.34	4261.70	4219.70	597.78	4261.84	8.06	0.48
11432.00	90.20	358.64	7013.34	4355.57	4314.68	595.74	4355.62	7.86	0.50
11498.00	89.87	358.24	7013.30	4420.73	4380.66	593.94	4420.74	7.72	0.79

MD	Inc	Azim	TVD	VS	+N/-S	+E/-W	Closure Distance	Closure Direction	DLS
ft	deg	deg	ft	ft	ft	ft	ft	deg	°/100ft

5" = 100' FEET MD