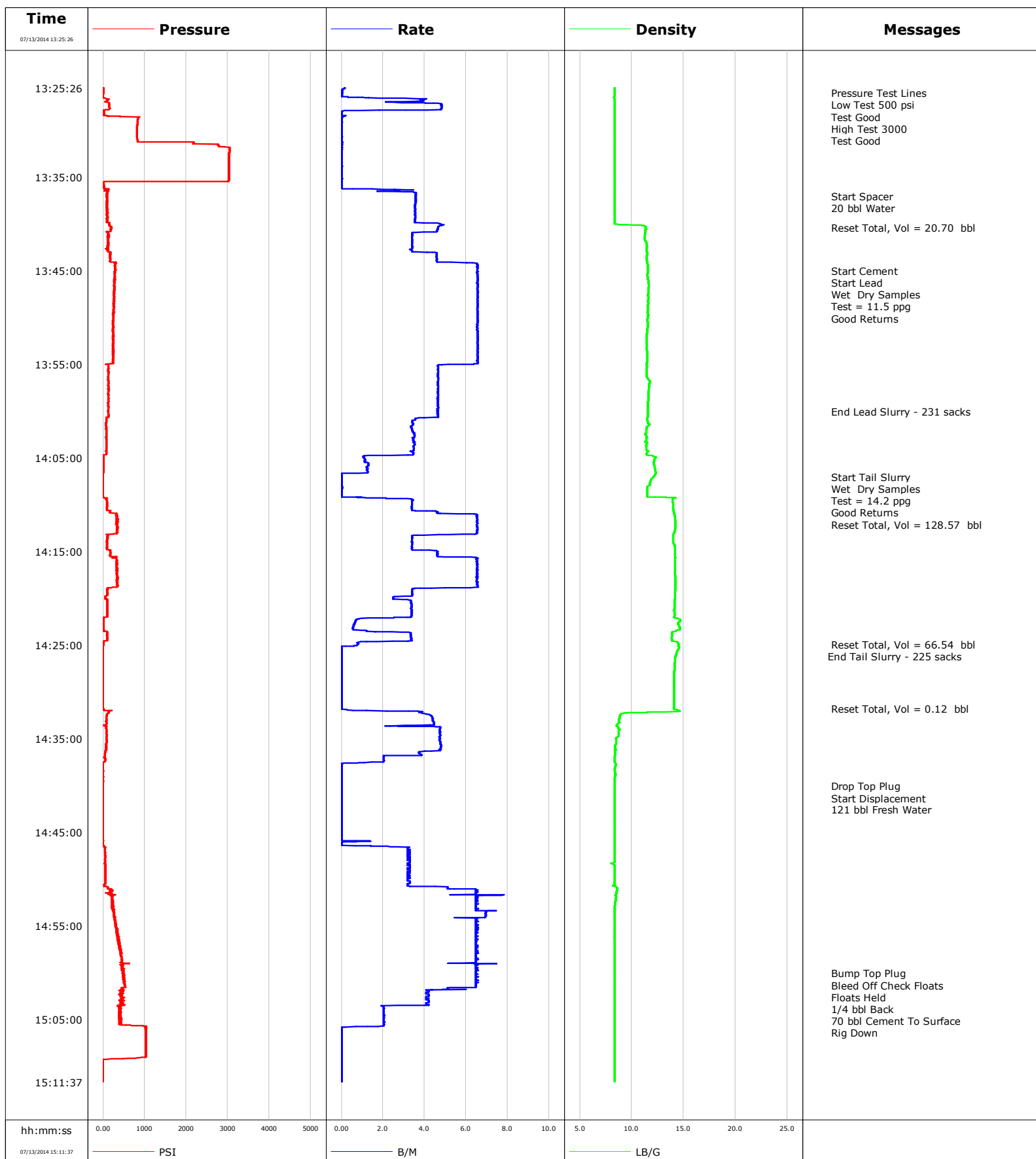


Well horsetail 30F-3107
Field Wildcat
Engineer Jordan Moreland / Terry Tischmak
Country

Client Whiting
SIR No. C459-02932
Job Type 9 5/8 Surface
Job Date





Well			Field		Job Start	Customer	Job Number
horsetail 30F-3107			Wildcat		Jul/13/2014	Whiting	C459-02932
Date	Time 24-hr clock	Treating Pressure PSI	Flow Rate B/M	Density LB/G	Volume BBL	Message	
07/13/2014	13:44:00	165	4.6	11.48	34.8		
07/13/2014	13:45:00					Start Cement	
07/13/2014	13:45:00					Start Lead	
07/13/2014	13:45:00					Wet Dry Samples	
07/13/2014	13:45:00					Test = 11.5 ppg	
07/13/2014	13:45:00					Good Returns	
07/13/2014	13:45:00	303	6.5	11.54	41.2		
07/13/2014	13:46:00	290	6.6	11.58	47.7		
07/13/2014	13:48:00	254	6.5	11.58	60.8		
07/13/2014	13:50:00	247	6.6	11.55	73.9		
07/13/2014	13:52:00	253	6.5	11.46	87.0		
07/13/2014	13:54:00	237	6.5	11.50	100.1		
07/13/2014	13:56:00	130	4.7	11.46	111.3		
07/13/2014	13:58:00	125	4.6	11.60	120.6		
07/13/2014	14:00:00					End Lead Slurry	
07/13/2014	14:00:00	132	4.6	11.53	129.9		
07/13/2014	14:02:00	74	3.4	11.42	137.6		
07/13/2014	14:04:00	75	3.5	11.43	144.6		
07/13/2014	14:06:00	10	1.2	12.23	148.5		
07/13/2014	14:07:00					Start Tail Slurry	
07/13/2014	14:07:00					Wet Dry Samples	
07/13/2014	14:07:00					Test = 14.2 ppg	
07/13/2014	14:07:00					Good Returns	
07/13/2014	14:07:00	-10	0.0	12.11	149.3		
07/13/2014	14:07:03					Reset Total, Vol = 128.57 bbl	
07/13/2014	14:07:03	-10	0.0	12.07	149.3		
07/13/2014	14:08:00	-7	0.0	11.53	149.3		
07/13/2014	14:10:00	94	3.4	13.98	151.8		
07/13/2014	14:12:00	354	6.5	14.21	162.3		
07/13/2014	14:14:00	93	3.4	13.99	172.8		
07/13/2014	14:16:00	320	6.5	14.17	181.9		
07/13/2014	14:18:00	358	6.5	14.19	194.9		
07/13/2014	14:20:00	56	2.5	14.17	204.2		
07/13/2014	14:22:00	43	3.4	14.08	210.9		
07/13/2014	14:24:00	98	3.3	13.89	213.6		
07/13/2014	14:24:54					Reset Total, Vol = 66.54 bbl	
07/13/2014	14:24:54	10	0.8	14.50	215.8		
07/13/2014	14:25:00					End Tail Slurry	
07/13/2014	14:25:00	10	0.8	14.49	215.9		
07/13/2014	14:26:00	-4	0.0	14.27	215.9		
07/13/2014	14:28:00	-4	0.0	14.08	215.9		
07/13/2014	14:30:00	-6	0.0	14.07	215.9		
07/13/2014	14:31:43					Reset Total, Vol = 0.12 bbl	
07/13/2014	14:31:43	-2	0.0	14.07	215.9		
07/13/2014	14:32:00	161	2.2	14.70	0.1		
07/13/2014	14:34:00	84	4.7	8.80	8.6		
07/13/2014	14:36:00	81	4.8	8.40	18.1		
07/13/2014	14:38:00	-1	0.0	8.41	22.9		
07/13/2014	14:40:00					Drop Top Plug	
07/13/2014	14:40:00					Start Displacement	
07/13/2014	14:40:00					121 bbl Fresh Water	
07/13/2014	14:40:00	-3	0.0	8.36	22.9		
07/13/2014	14:42:00	-4	0.0	8.36	22.9		
07/13/2014	14:44:00	-4	0.0	8.36	22.9		

Well			Field		Job Start	Customer	Job Number
horsetail 30F-3107			Wildcat		Jul/13/2014	Whiting	C459-02932
Date	Time 24-hr clock	Treating Pressure PSI	Flow Rate B/M	Density LB/G	Volume BBL	Message	
07/13/2014	14:48:00	47	3.3	8.36	28.0		
07/13/2014	14:50:00	57	3.2	8.35	34.5		
07/13/2014	14:52:00	230	6.6	8.46	44.7		
07/13/2014	14:54:00	258	6.9	8.34	57.9		
07/13/2014	14:56:00	350	6.5	8.35	70.9		
07/13/2014	14:58:00	452	6.5	8.35	83.9		
07/13/2014	15:00:00					Bump Top Plug	
07/13/2014	15:00:00					Bleed Off Check Floats	
07/13/2014	15:00:00					Floats Held	
07/13/2014	15:00:00					1/4 bbl Back	
07/13/2014	15:00:00					70 bbl Cement To Surface	
07/13/2014	15:00:00					Rig Down	
07/13/2014	15:00:00	485	6.5	8.35	96.9		
07/13/2014	15:02:00	474	4.2	8.35	109.0		
07/13/2014	15:04:00	433	2.0	8.35	116.1		
07/13/2014	15:06:00	1025	0.0	8.35	119.7		
07/13/2014	15:08:00	1031	0.0	8.35	119.7		

Post Job Summary

Average Pump Rates,					Volume of Fluid Injected,			
Slurry	N2	Mud	Maximum Rate		Total Slurry	Mud	Spacer	N2
Treating Pressure Summary,					Breakdown Fluid			
Maximum	Final	Average	Bump Plug to	Breakdown	Type	Volume		Density
Avg. N2 Percent		Designed Slurry Volume		Displacement	Mix Water Temp	Cement Circulated to Surface? <input checked="" type="checkbox"/>		Volume
					65 degF	Washed Thru Perfs <input type="checkbox"/>		To
Customer or Authorized Representative			Schlumberger Supervisor			Circulation Lost <input type="checkbox"/>		Job Completed <input checked="" type="checkbox"/>
Kevin Mosley			Jordan Moreland / Terry Tischmak			-		-