

# Rohn State LD10-68HN

**TVD**  
1" : 100'

**Company:** Noble Energy Inc  
**Well Name:** Rohn State LD10-68HN

**API:** 05-123-37627

**Rig Id:** Precision 828

**State:** Colorado

**County/Parish:** Weld

**Country:** USA

**Survey Company:** Ensign Directional

**Job number:** 05-123-37627

**Company Man 1** Gary Stapleton

**Directional Driller 1** Tyler Batchelder

**Directional Driller 2** Matt Mason

**Directional Driller 3** Dustin Davis

**MWD 1** Derek Saykally

**MWD 2** Bill Mercer

**Log measurements:** Gamma

**Depth measured from:** KB

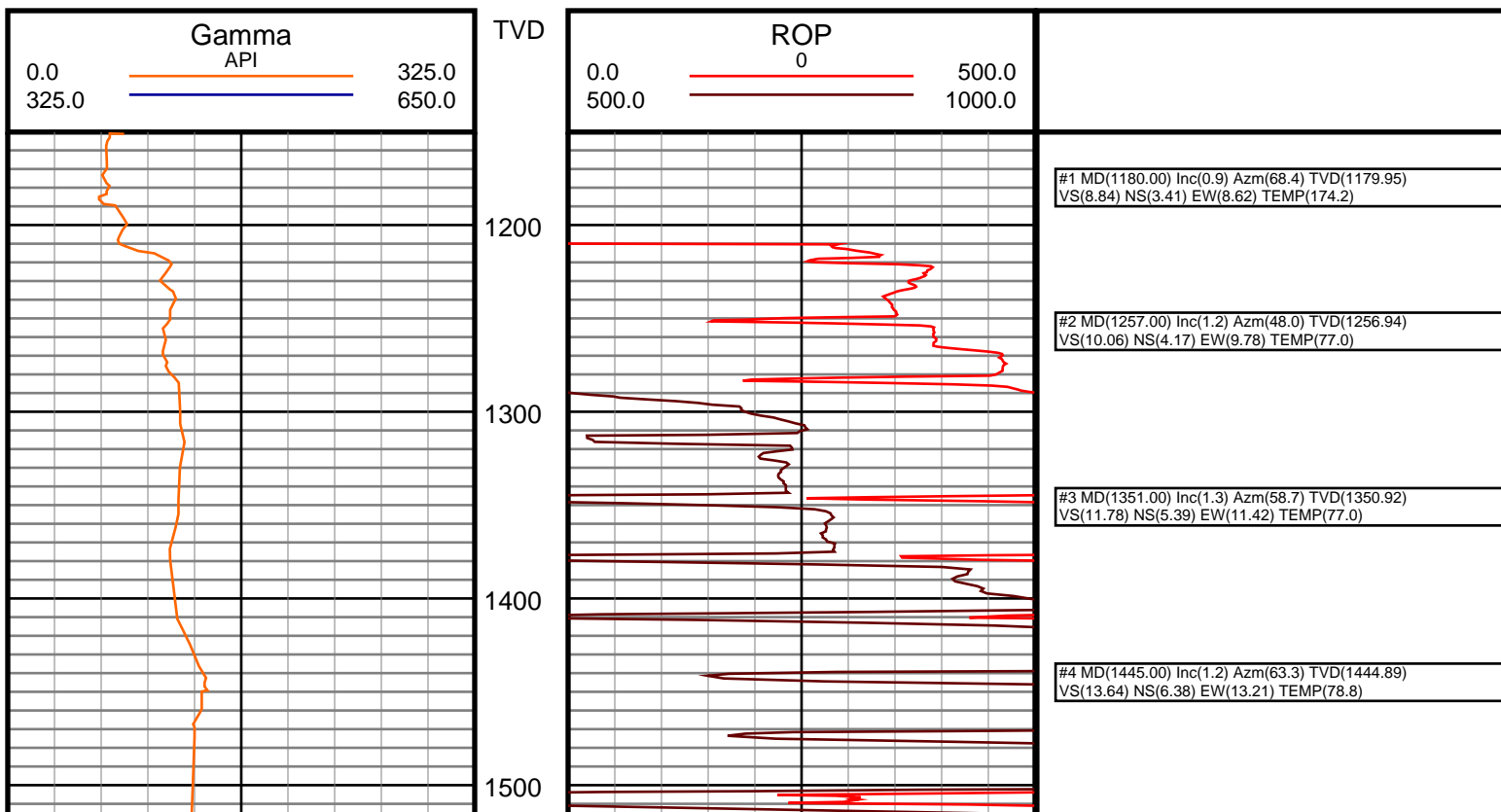
**Maximum temperature:**

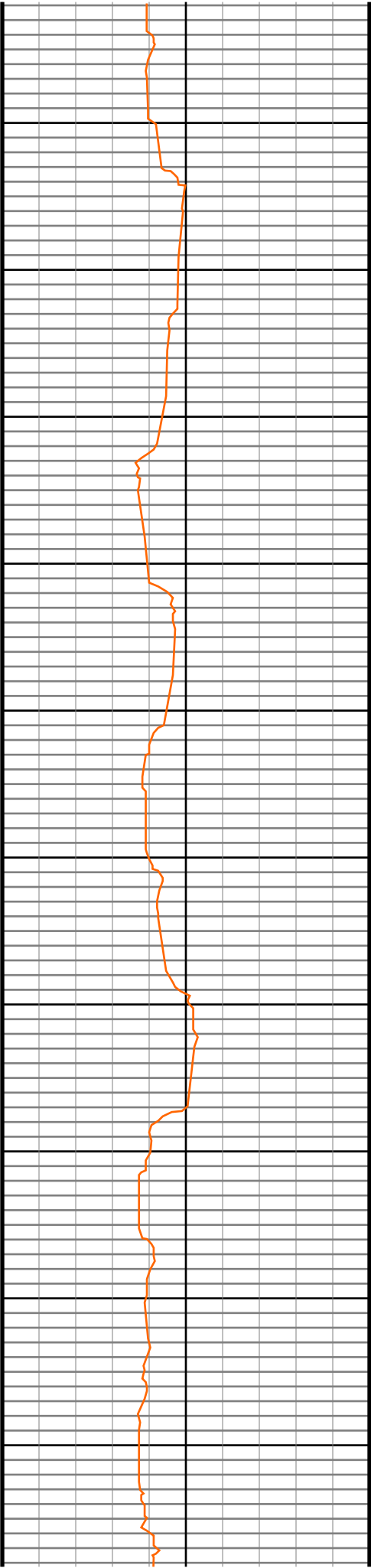
**Depth** **Date**  
**Start:** 1210 ft 10/11/2014  
**End:** ft

Casing	Depth	Size	Mud Type:	Water Based	Elevations
Surface:	1210	9.625	Density:		KB: 4755
Intermediate:	6261	7	Viscosity:		GL: 4739
			Rm:	Rmf:	DF: 4755
				Rmc:	

Run	Bit Size	Offsets	Gamma	Survey	Start	End	Start	End
1	8 3/4	59.75	54.75	1210	6272	9667	10/11/2014	10/13/2014
2	6 1/8	60.94	55.94	6272			10/13/2014	10/15/2014
3								
4								
5								
6								
7								
8								
9								
10								

Ensign Directional uses its best efforts to provide its customers with accurate information and interpretations in conjunction with services performed but will not be held liable or responsible for the accuracy of such information or interpretation.





1600

1700

1800

1900

2000

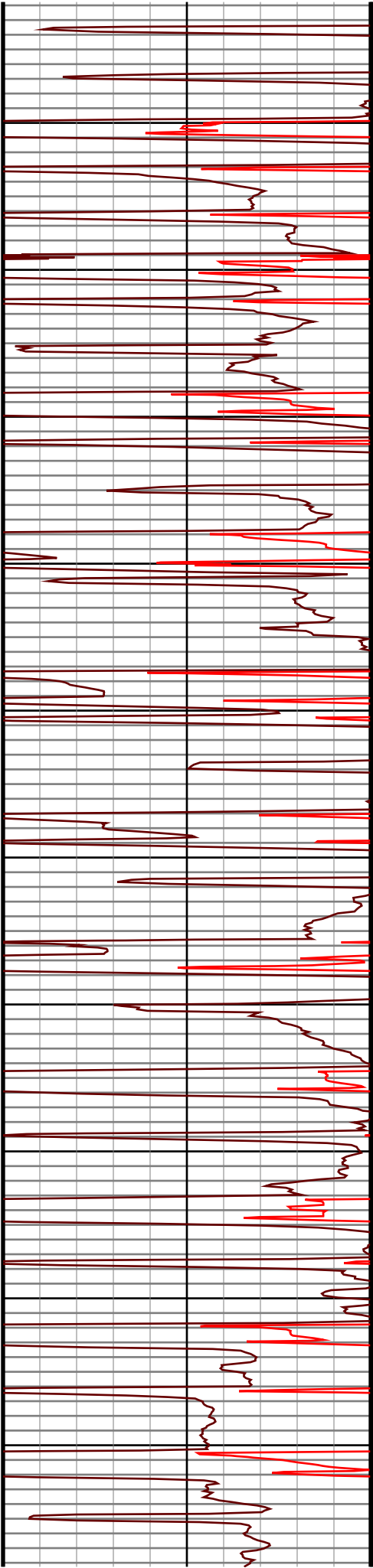
2100

2200

2300

2400

2500



#5 MD(1539.00) Inc(3.3) Azm(73.1) TVD(1538.82) VS(17.19) NS(7.61) EW(16.68) TEMP(78.8)
#6 MD(1633.00) Inc(3.5) Azm(54.3) TVD(1632.65) VS(22.28) NS(10.07) EW(21.60) TEMP(78.8)
#7 MD(1728.00) Inc(4.7) Azm(63.9) TVD(1727.41) VS(28.36) NS(13.48) EW(27.45) TEMP(78.8)
#8 MD(1823.00) Inc(5.5) Azm(58.6) TVD(1822.03) VS(36.02) NS(17.56) EW(34.83) TEMP(78.8)
#9 MD(1918.00) Inc(7.1) Azm(80.1) TVD(1916.47) VS(45.91) NS(20.94) EW(44.50) TEMP(78.8)
#10 MD(2015.00) Inc(9.5) Azm(84.2) TVD(2012.45) VS(59.88) NS(22.78) EW(58.37) TEMP(78.8)
#11 MD(2105.00) Inc(11.7) Azm(73.8) TVD(2100.91) VS(76.24) NS(26.08) EW(74.53) TEMP(78.8)
#12 MD(2195.00) Inc(12.8) Azm(64.1) TVD(2188.87) VS(94.43) NS(32.98) EW(92.26) TEMP(91.4)
#13 MD(2285.00) Inc(13.8) Azm(68.3) TVD(2276.46) VS(113.93) NS(41.31) EW(111.21) TEMP(91.4)
#14 MD(2375.00) Inc(15.3) Azm(63.4) TVD(2363.58) VS(135.14) NS(50.59) EW(131.80) TEMP(91.4)
#15 MD(2464.00) Inc(15.3) Azm(69.7) TVD(2449.43) VS(157.28) NS(59.92) EW(153.31) TEMP(96.8)
#16 MD(2554.00) Inc(15.1) Azm(77.0) TVD(2536.29) VS(180.28) NS(66.68) EW(175.87) TEMP(96.8)

