

# Rohn State LD10-68HN

**MD**  
1" : 100'

**Company:** Noble Energy Inc  
**Well Name:** Rohn State LD10-68HN

**API:** 05-123-37627

**Rig Id:** Precision 828

**State:** Colorado

**County/Parish:** Weld

**Country:** USA

**Survey Company:** Ensign Directional

**Job number:** 05-123-37627

**Company Man 1** Gary Stapleton

**Directional Driller 1** Tyler Batchelder

**Directional Driller 2** Matt Mason

**Directional Driller 3** Dustin Davis

**MWD 1** Derek Saykally

**MWD 2** Bill Mercer

**Log measurements:** Gamma

**Depth measured from:** KB

**Maximum temperature:**

**Depth** **Date**  
**Start:** 1210 ft **10/11/2014**  
**End:** ft

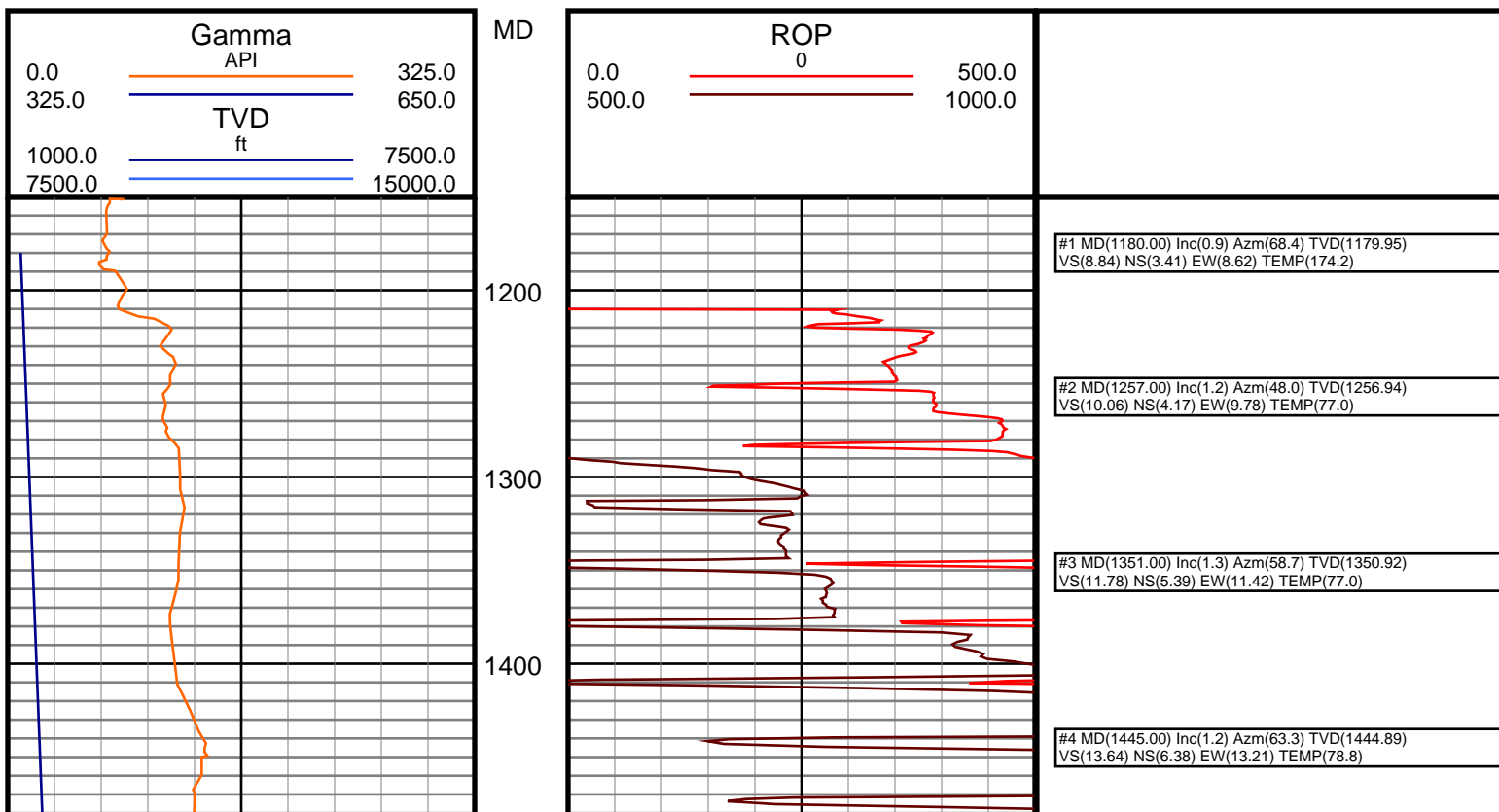
**Casing** **Depth** **Size**  
**Surface:** 1210 9.625  
**Intermediate:** 6261 7

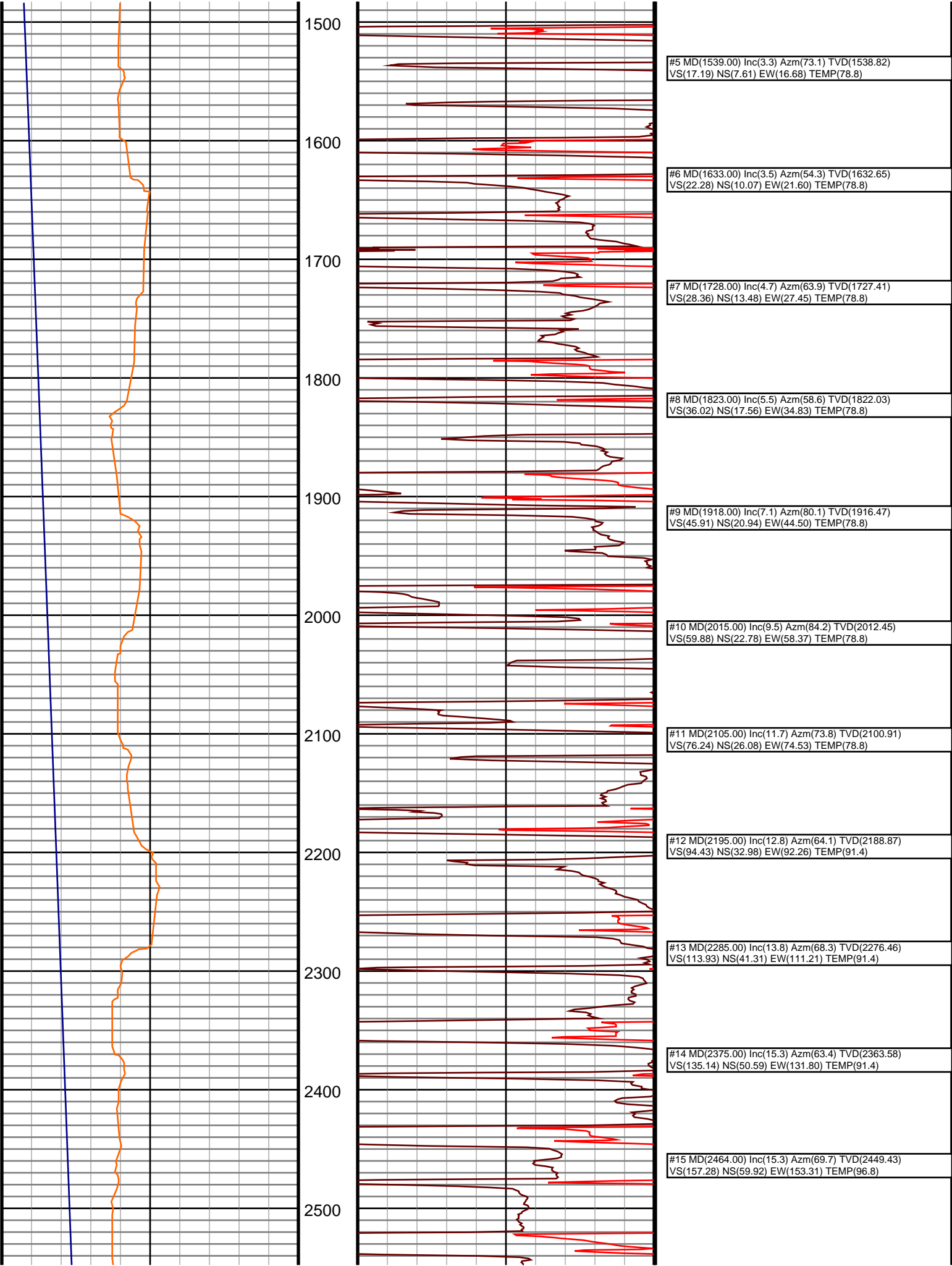
**Mud Type:** Water Based  
**Density:**  
**Viscosity:**  
**Rm:** **Rmf:** **Rmc:**

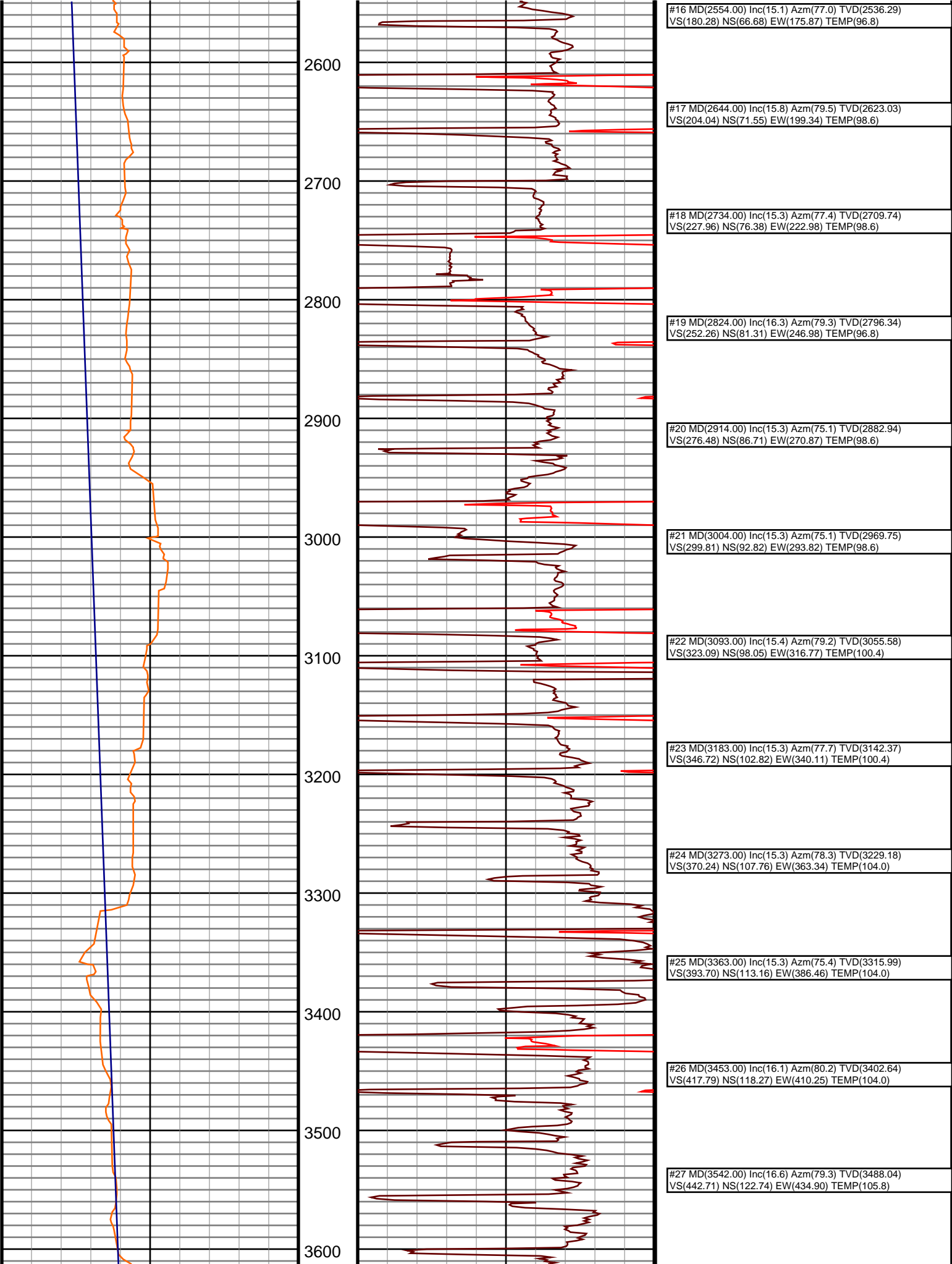
**Elevations**  
**KB:** 4755  
**GL:** 4739  
**DF:** 4755

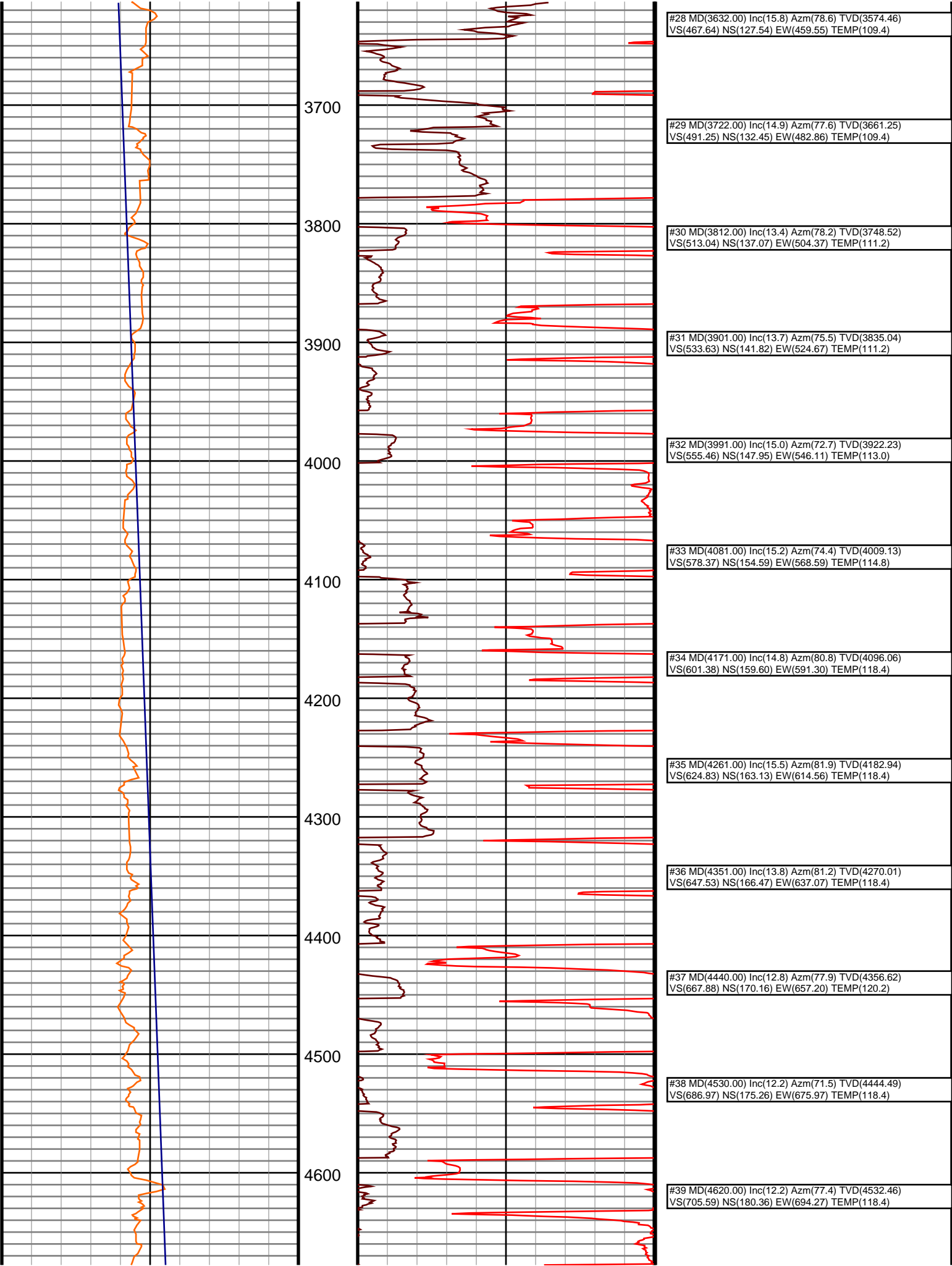
Run	Bit Size	Gamma	Survey	Start	End	Start	End
1	8 3/4	59.75	54.75	1210	6272	10/11/2014	10/13/2014
2	6 1/8	60.94	55.94	6272	9667	10/13/2014	10/15/2014
3							
4							
5							
6							
7							
8							
9							
10							

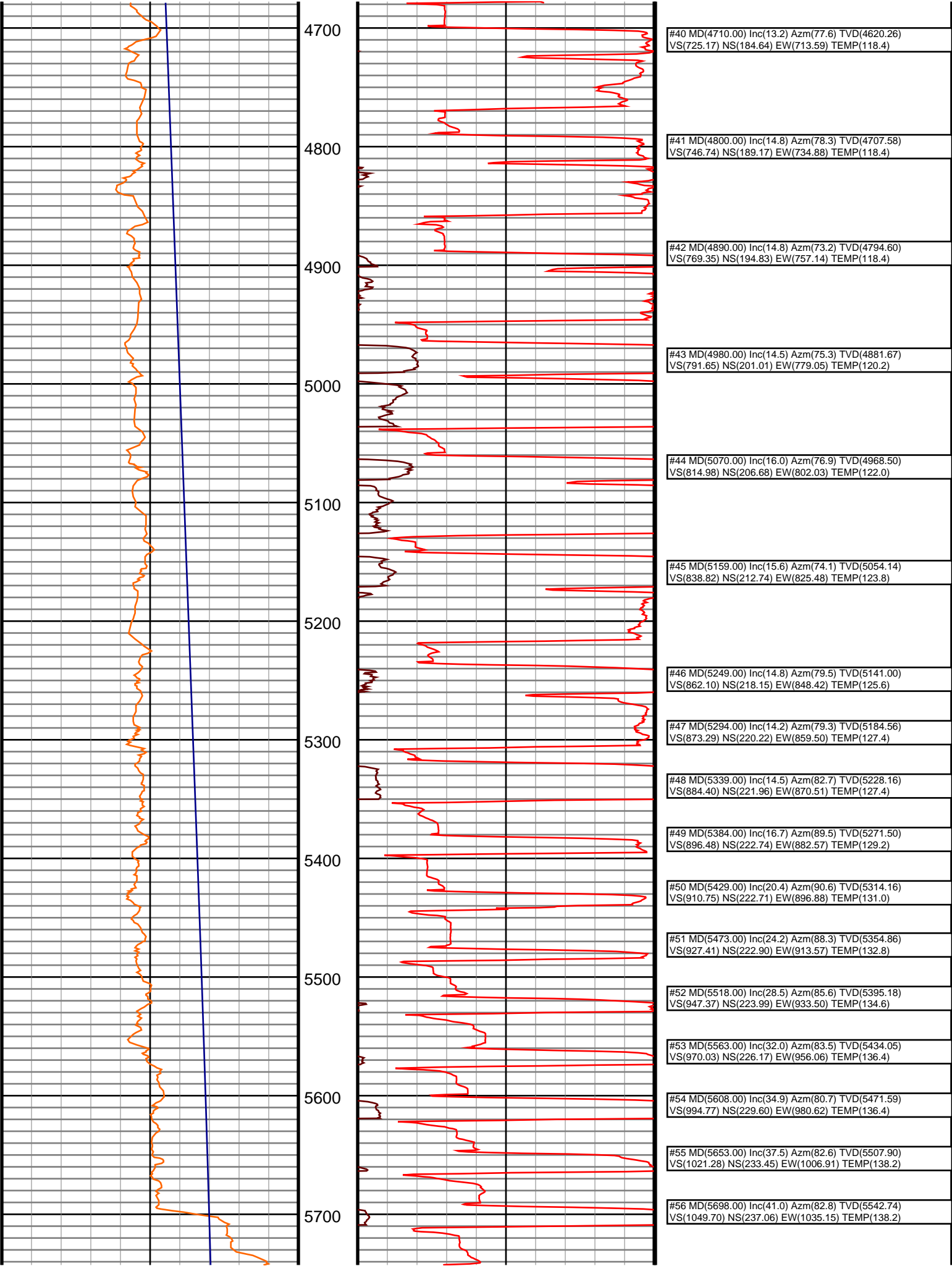
Ensign Directional uses its best efforts to provide its customers with accurate information and interpretations in conjunction with services performed but will not be held liable or responsible for the accuracy of such information or interpretation.

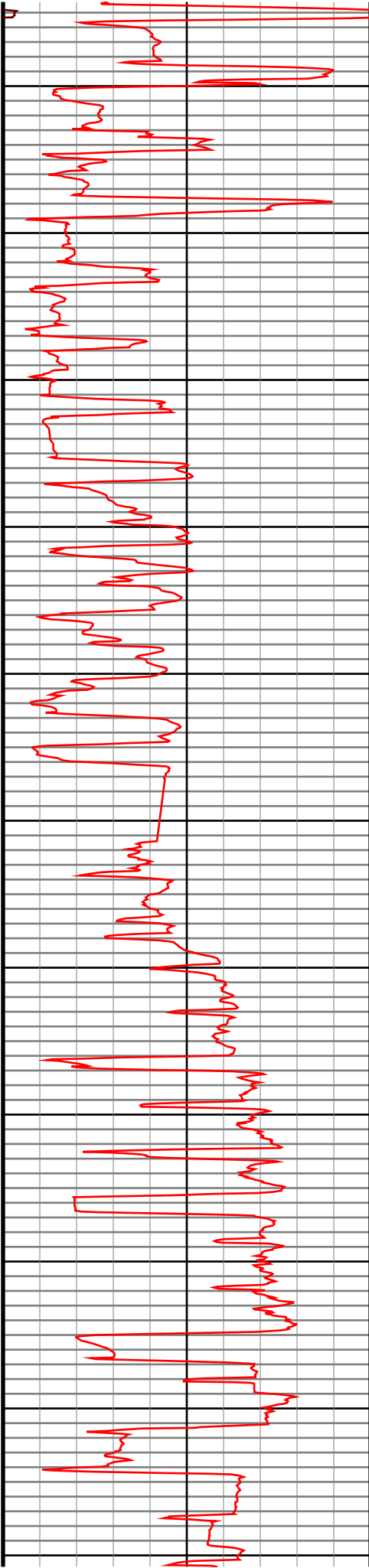
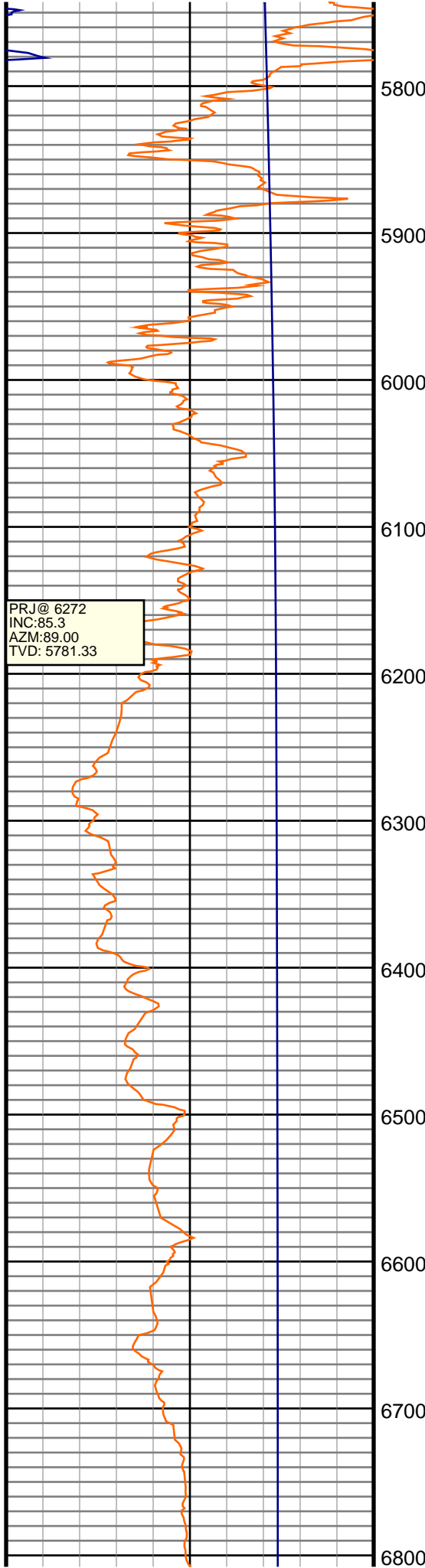




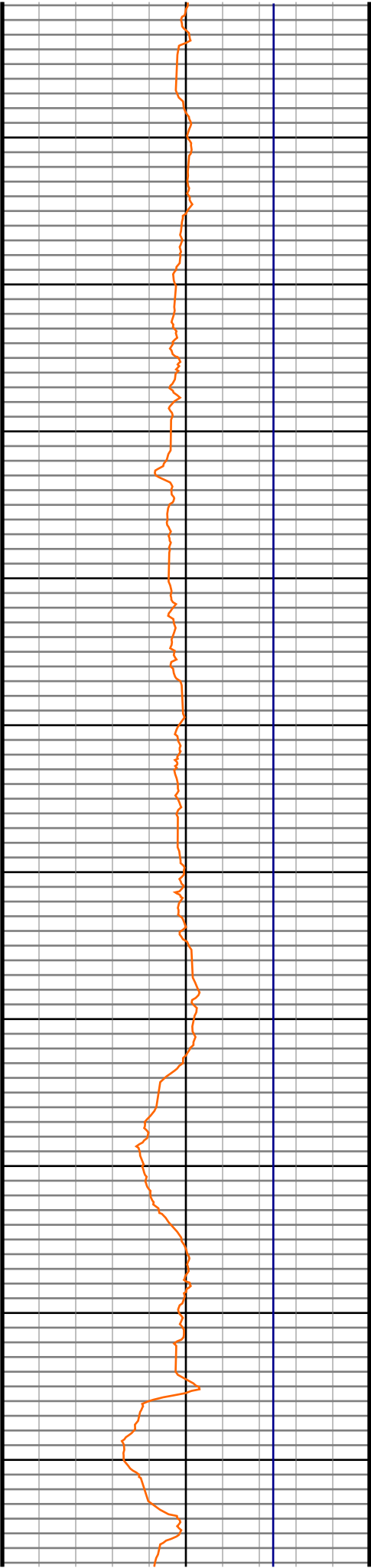








#57 MD(5743.00) Inc(44.9) Azm(82.8) TVD(5575.67) VS(1080.31) NS(240.90) EW(1065.56) TEMP(140.0)
#58 MD(5788.00) Inc(48.6) Azm(84.4) TVD(5606.50) VS(1113.06) NS(244.54) EW(1098.13) TEMP(141.8)
#59 MD(5832.00) Inc(52.1) Azm(83.3) TVD(5634.58) VS(1146.91) NS(248.18) EW(1131.80) TEMP(143.6)
#60 MD(5877.00) Inc(55.6) Azm(82.9) TVD(5661.12) VS(1183.20) NS(252.55) EW(1167.87) TEMP(141.8)
#61 MD(5922.00) Inc(59.5) Azm(83.8) TVD(5685.26) VS(1221.13) NS(256.94) EW(1205.58) TEMP(143.6)
#62 MD(5967.00) Inc(63.0) Azm(85.9) TVD(5706.90) VS(1260.57) NS(260.46) EW(1244.87) TEMP(145.4)
#63 MD(6012.00) Inc(66.9) Azm(87.1) TVD(5725.95) VS(1301.33) NS(262.95) EW(1285.55) TEMP(147.2)
#64 MD(6057.00) Inc(71.0) Azm(88.2) TVD(5742.11) VS(1343.29) NS(264.66) EW(1327.50) TEMP(147.2)
#65 MD(6102.00) Inc(75.6) Azm(87.8) TVD(5755.04) VS(1386.35) NS(266.17) EW(1370.57) TEMP(149.0)
#66 MD(6146.00) Inc(79.2) Azm(87.1) TVD(5764.64) VS(1429.27) NS(268.08) EW(1413.46) TEMP(150.8)
#67 MD(6191.00) Inc(81.2) Azm(86.6) TVD(5772.30) VS(1473.60) NS(270.52) EW(1457.73) TEMP(150.8)
#68 MD(6217.00) Inc(83.2) Azm(87.6) TVD(5775.82) VS(1499.35) NS(271.82) EW(1483.45) TEMP(152.6)
#69 MD(6307.00) Inc(85.8) Azm(88.7) TVD(5784.45) VS(1588.85) NS(274.71) EW(1572.98) TEMP(154.4)
#70 MD(6401.00) Inc(86.5) Azm(87.5) TVD(5790.76) VS(1682.56) NS(277.82) EW(1666.72) TEMP(156.2)
#71 MD(6495.00) Inc(86.6) Azm(87.2) TVD(5796.42) VS(1776.36) NS(282.16) EW(1760.45) TEMP(172.4)
#72 MD(6589.00) Inc(87.8) Azm(87.5) TVD(5801.01) VS(1870.21) NS(286.50) EW(1854.23) TEMP(165.2)
#73 MD(6683.00) Inc(89.4) Azm(89.0) TVD(5803.31) VS(1964.09) NS(289.37) EW(1948.16) TEMP(167.0)
#74 MD(6776.00) Inc(89.9) Azm(88.9) TVD(5803.88) VS(2056.95) NS(291.07) EW(2041.14) TEMP(167.0)



6900

7000

7100

7200

7300

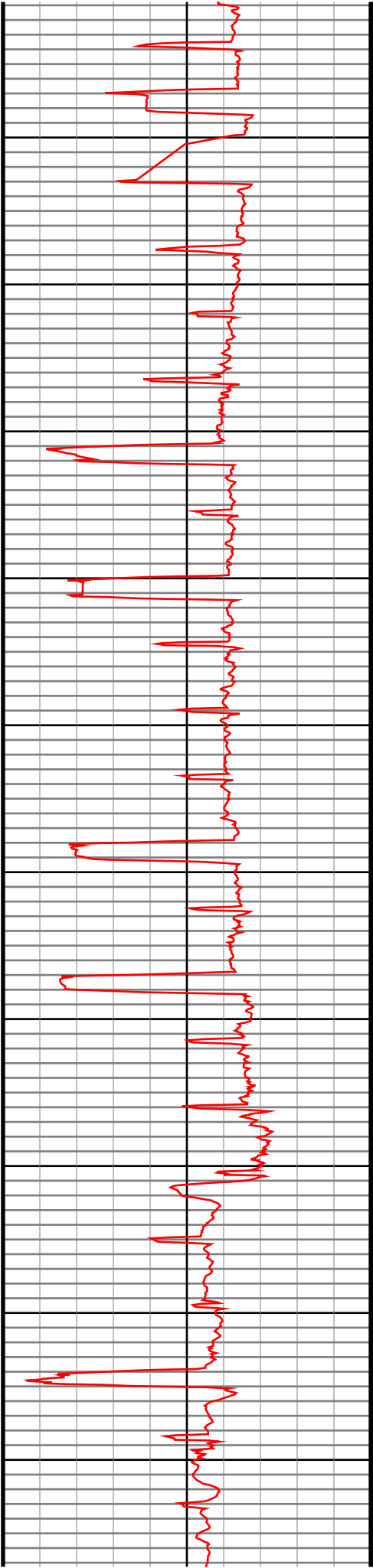
7400

7500

7600

7700

7800



#75 MD(6870.00) Inc(90.7) Azm(88.1) TVD(5803.38)  
VS(2150.84) NS(293.53) EW(2135.10) TEMP(167.0)

#76 MD(6915.00) Inc(90.6) Azm(88.3) TVD(5802.87)  
VS(2195.80) NS(294.95) EW(2180.08) TEMP(168.8)

#77 MD(7005.00) Inc(90.9) Azm(87.0) TVD(5801.69)  
VS(2285.74) NS(298.64) EW(2269.99) TEMP(167.0)

#78 MD(7095.00) Inc(90.4) Azm(87.7) TVD(5800.67)  
VS(2375.71) NS(302.80) EW(2359.89) TEMP(168.8)

#79 MD(7184.00) Inc(90.5) Azm(89.3) TVD(5799.97)  
VS(2464.60) NS(305.13) EW(2448.85) TEMP(170.6)

#80 MD(7274.00) Inc(90.5) Azm(88.4) TVD(5799.19)  
VS(2554.47) NS(306.93) EW(2538.83) TEMP(172.4)

#81 MD(7364.00) Inc(89.9) Azm(89.1) TVD(5798.87)  
VS(2644.35) NS(308.90) EW(2628.81) TEMP(174.2)

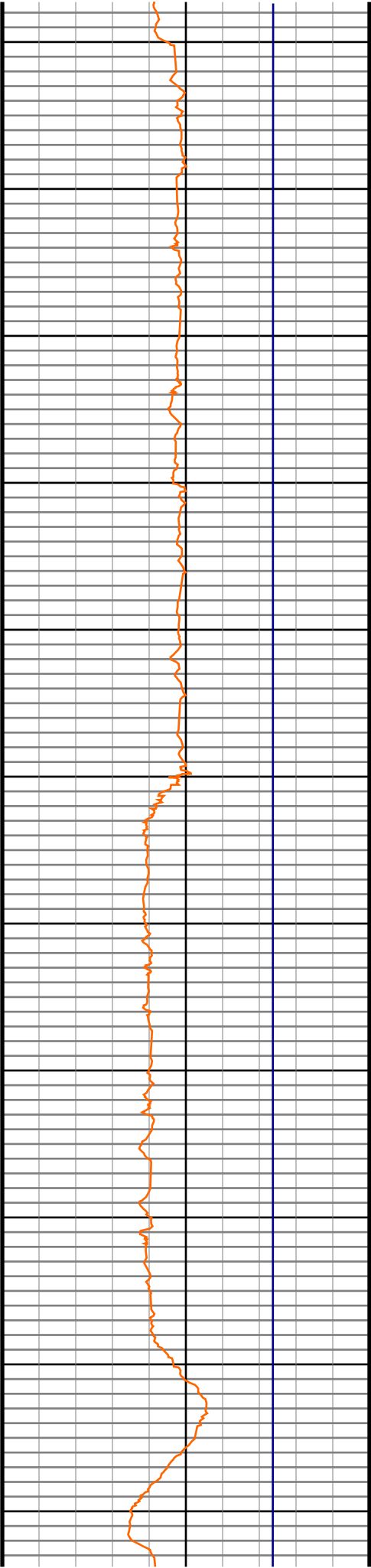
#82 MD(7454.00) Inc(90.3) Azm(90.3) TVD(5798.72)  
VS(2734.14) NS(309.37) EW(2718.80) TEMP(176.0)

#83 MD(7543.00) Inc(90.2) Azm(89.3) TVD(5798.33)  
VS(2822.92) NS(309.68) EW(2807.80) TEMP(179.6)

#84 MD(7633.00) Inc(90.1) Azm(89.2) TVD(5798.09)  
VS(2912.76) NS(310.86) EW(2897.79) TEMP(181.4)

#85 MD(7723.00) Inc(90.7) Azm(90.4) TVD(5797.47)  
VS(3002.54) NS(311.17) EW(2987.79) TEMP(181.4)

#86 MD(7812.00) Inc(90.9) Azm(89.7) TVD(5796.22)  
VS(3091.29) NS(311.09) EW(3076.78) TEMP(183.2)



7900

8000

8100

8200

8300

8400

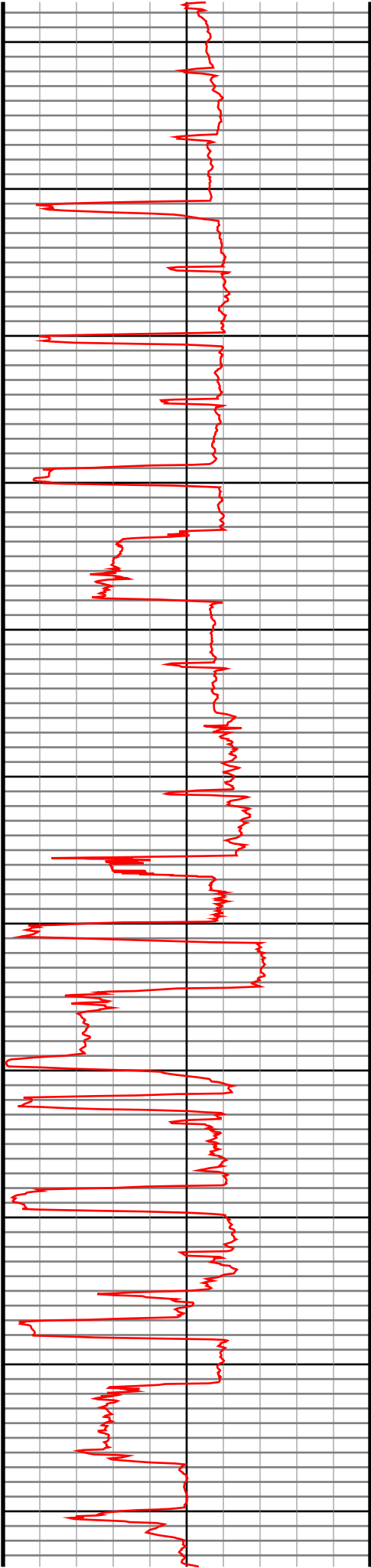
8500

8600

8700

8800

8900



#87 MD(7902.00) Inc(91.1) Azm(89.5) TVD(5794.65)  
VS(3181.08) NS(311.72) EW(3166.76) TEMP(185.0)

#88 MD(7992.00) Inc(90.9) Azm(87.5) TVD(5793.08)  
VS(3270.96) NS(314.08) EW(3256.71) TEMP(185.0)

#89 MD(8082.00) Inc(90.2) Azm(87.0) TVD(5792.22)  
VS(3360.92) NS(318.39) EW(3346.61) TEMP(185.0)

#90 MD(8172.00) Inc(90.4) Azm(89.1) TVD(5791.75)  
VS(3450.85) NS(321.46) EW(3436.55) TEMP(186.8)

#91 MD(8262.00) Inc(90.2) Azm(88.3) TVD(5791.27)  
VS(3540.73) NS(323.50) EW(3526.52) TEMP(186.8)

#92 MD(8351.00) Inc(90.2) Azm(87.2) TVD(5790.96)  
VS(3629.68) NS(326.99) EW(3615.45) TEMP(188.6)

#93 MD(8441.00) Inc(90.5) Azm(87.4) TVD(5790.41)  
VS(3719.65) NS(331.23) EW(3705.35) TEMP(188.6)

#94 MD(8531.00) Inc(90.2) Azm(86.4) TVD(5789.86)  
VS(3809.63) NS(336.10) EW(3795.22) TEMP(190.4)

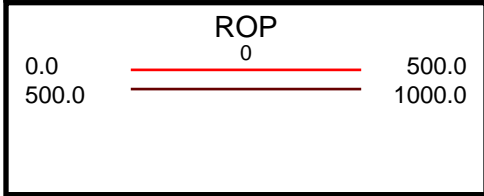
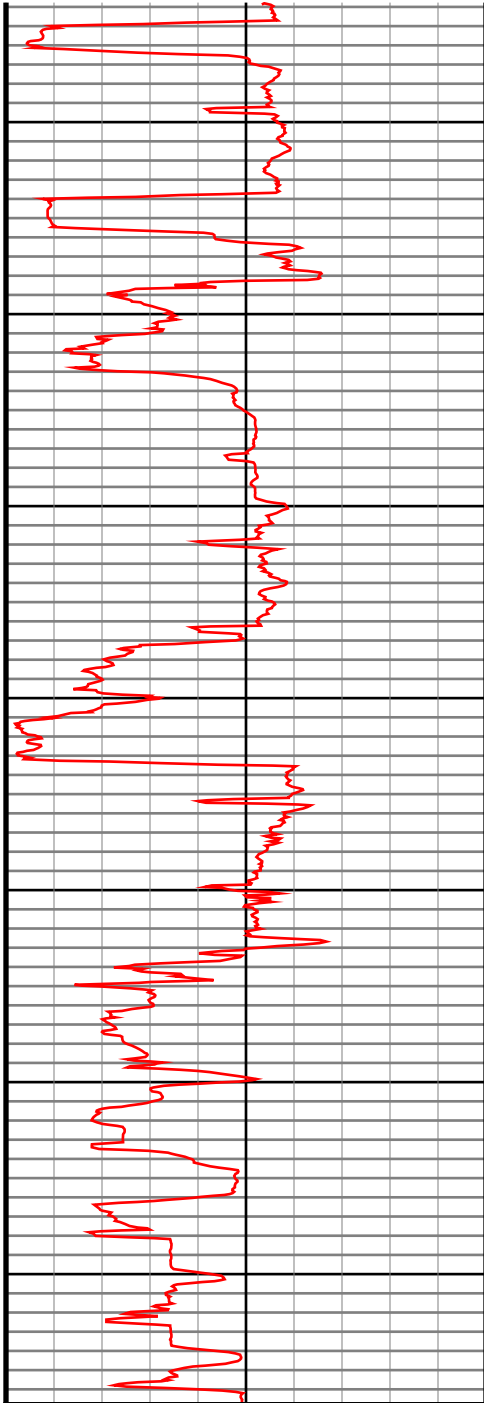
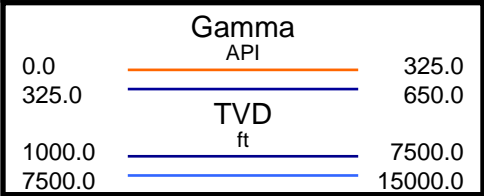
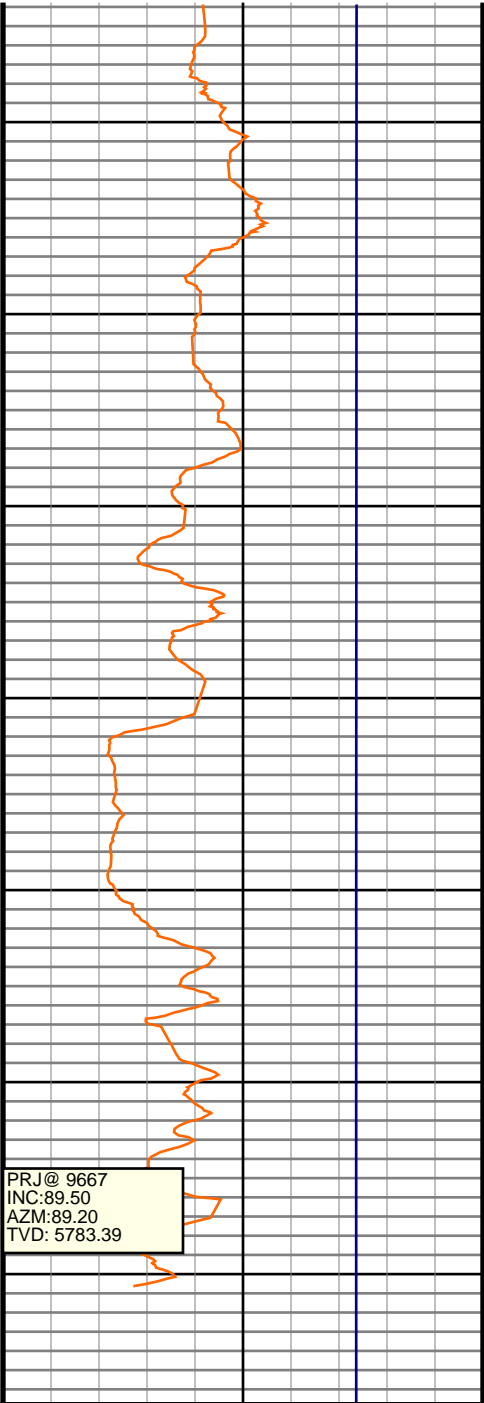
#95 MD(8620.00) Inc(89.5) Azm(87.2) TVD(5790.10)  
VS(3898.61) NS(341.07) EW(3884.08) TEMP(185.0)

#96 MD(8710.00) Inc(89.7) Azm(88.3) TVD(5790.73)  
VS(3988.56) NS(344.60) EW(3974.00) TEMP(186.8)

#97 MD(8800.00) Inc(90.7) Azm(88.3) TVD(5790.41)  
VS(4078.47) NS(347.27) EW(4063.96) TEMP(190.4)

#98 MD(8890.00) Inc(91.1) Azm(87.4) TVD(5789.00)  
VS(4168.40) NS(350.65) EW(4153.89) TEMP(194.0)





#99 MD(8980.00) Inc(91.0) Azm(88.1) TVD(5787.35)  
VS(4258.34) NS(354.18) EW(4243.80) TEMP(192.2)

#100 MD(9070.00) Inc(90.2) Azm(89.6) TVD(5786.41)  
VS(4348.20) NS(355.98) EW(4333.77) TEMP(194.0)

#101 MD(9159.00) Inc(90.5) Azm(89.3) TVD(5785.86)  
VS(4437.02) NS(356.84) EW(4422.77) TEMP(195.8)

#102 MD(9249.00) Inc(90.9) Azm(87.8) TVD(5784.76)  
VS(4526.91) NS(359.12) EW(4512.73) TEMP(192.2)

#103 MD(9339.00) Inc(90.4) Azm(89.9) TVD(5783.74)  
VS(4616.77) NS(360.92) EW(4602.70) TEMP(195.8)

#104 MD(9429.00) Inc(90.4) Azm(90.2) TVD(5783.11)  
VS(4706.52) NS(360.84) EW(4692.70) TEMP(199.4)

#105 MD(9518.00) Inc(90.2) Azm(89.0) TVD(5782.65)  
VS(4795.32) NS(361.46) EW(4781.69) TEMP(199.4)

#106 MD(9609.00) Inc(89.5) Azm(89.2) TVD(5782.89)  
VS(4886.17) NS(362.89) EW(4872.68) TEMP(199.4)