

Rohn State LD10-68-1HN

TVD
1" : 100'

Company: Noble Energy Inc
Well Name: Rohn State LD10-68-1HN

API: 05-123-37626

Rig Id: Precision 828

State: Colorado

County/Parish: Weld

Country: USA

Survey Company: Ensign Directional

Job number: 05-123-37626

Company Man 1 Gary Stapleton

Directional Driller 1 Tyler Batchelder

Directional Driller 2 Matt Mason

Directional Driller 3 Dustin Davis

MWD 1 Mark Bigler

MWD 2 Derek Saykally

Log measurements: Gamma

Depth measured from: KB

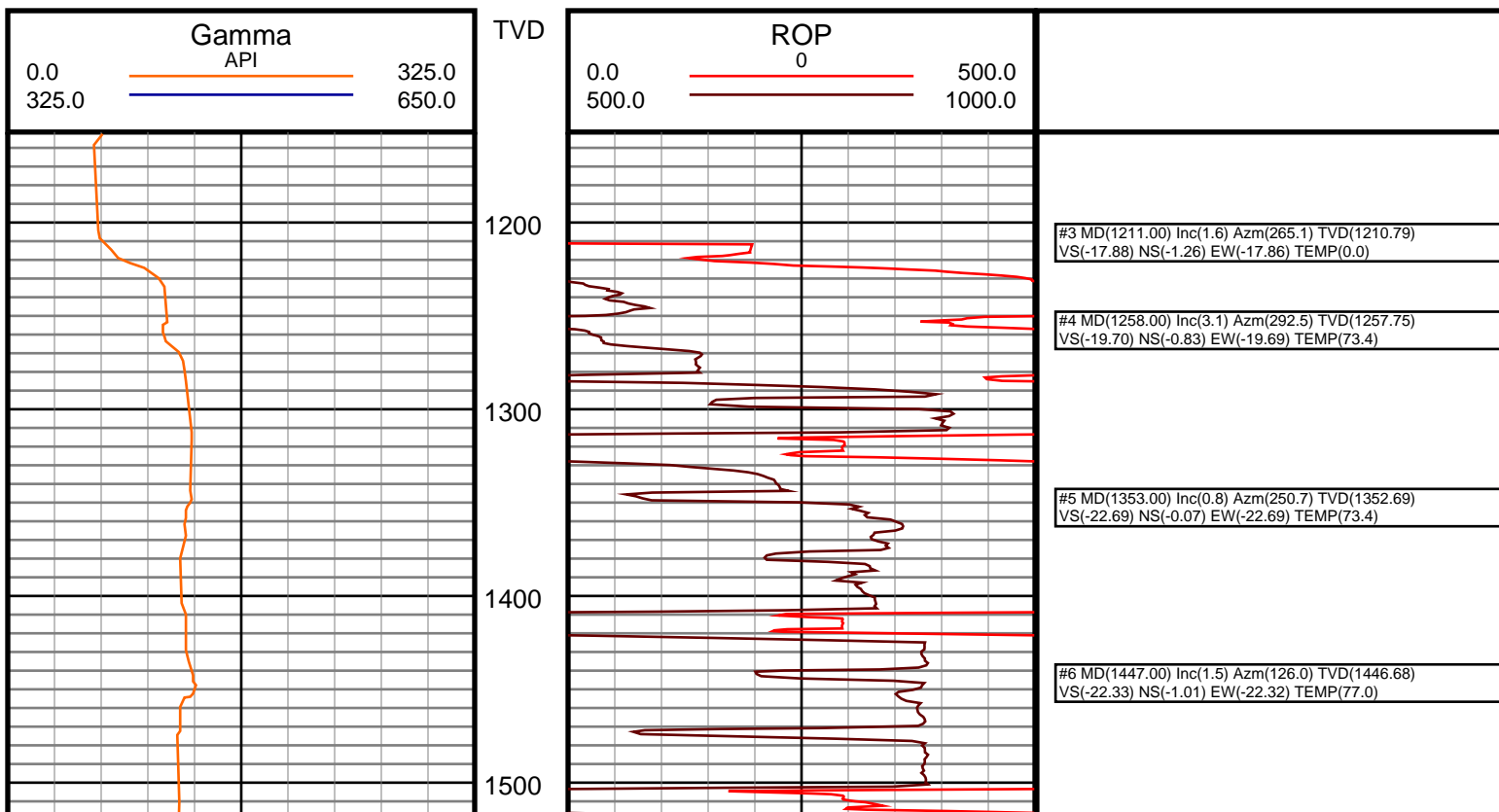
Maximum temperature:

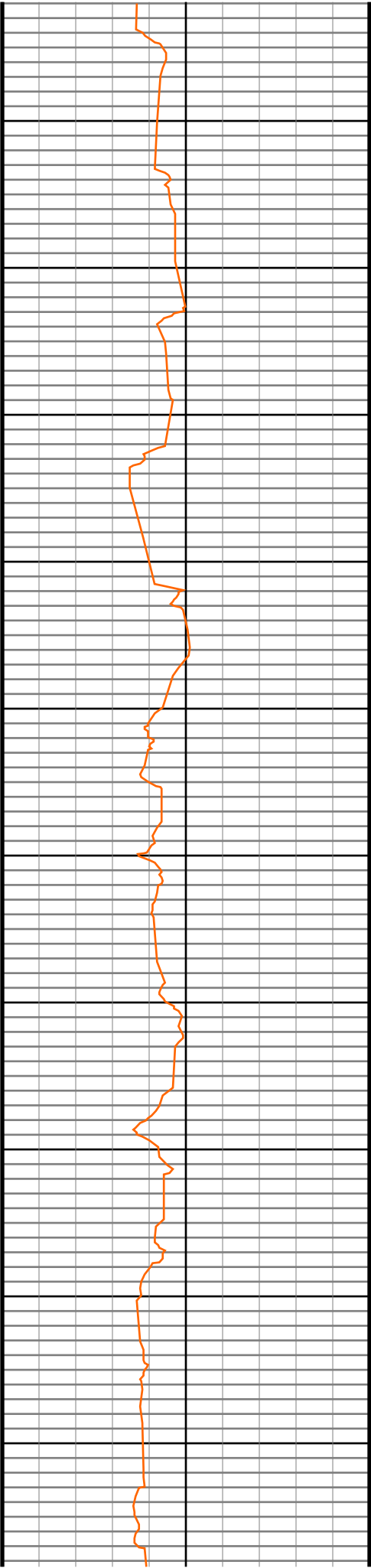
Depth **Date**
Start: 1207 ft 10/2/2014
End: 9590 ft 10/7/2014

Casing	Depth	Size	Mud Type:	Water Based	Elevations
Surface:	1207	9.625	Density:		KB: 4755
Intermediate:	6144	7	Viscosity:		GL: 4739
			Rm:	Rmf:	DF: 4755

Run	Bit Size	Offsets		Depths		Dates	
		Gamma	Survey	Start	End	Start	End
1	8 3/4	59.67	54.67	1207	6171	10/2/2014	10/4/2014
2	6 1/8	61.52	56.52	6144	7117	10/5/2014	10/6/2014
3	6 1/8	61.48	56.48	7117	9590	10/6/2014	10/7/2014
4							
5							
6							
7							
8							
9							
10							

Ensign Directional uses its best efforts to provide its customers with accurate information and interpretations in conjunction with services performed but will not be held liable or responsible for the accuracy of such information or interpretation.





1600

1700

1800

1900

2000

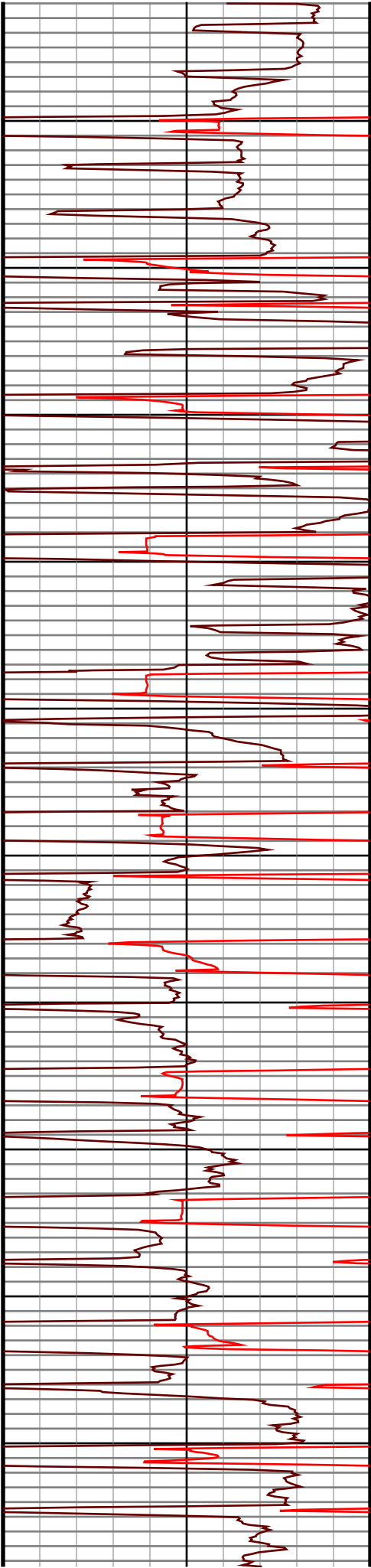
2100

2200

2300

2400

2500



#7 MD(1542.00) Inc(4.0) Azm(117.6) TVD(1541.56)
VS(-18.42) NS(-3.28) EW(-18.37) TEMP(78.8)

#8 MD(1637.00) Inc(5.0) Azm(101.4) TVD(1636.27)
VS(-11.46) NS(-5.63) EW(-11.38) TEMP(78.8)

#9 MD(1732.00) Inc(7.1) Azm(91.5) TVD(1730.74)
VS(-1.54) NS(-6.60) EW(-1.45) TEMP(78.8)

#10 MD(1827.00) Inc(8.0) Azm(88.1) TVD(1824.92)
VS(10.93) NS(-6.54) EW(11.03) TEMP(82.4)

#11 MD(1922.00) Inc(9.5) Azm(93.6) TVD(1918.81)
VS(25.36) NS(-6.81) EW(25.46) TEMP(84.2)

#12 MD(2019.00) Inc(11.3) Azm(95.8) TVD(2014.21)
VS(42.78) NS(-8.27) EW(42.91) TEMP(86.0)

#13 MD(2109.00) Inc(11.9) Azm(85.6) TVD(2102.38)
VS(60.81) NS(-8.45) EW(60.93) TEMP(87.8)

#14 MD(2199.00) Inc(13.3) Azm(90.6) TVD(2190.22)
VS(80.42) NS(-7.85) EW(80.54) TEMP(87.8)

#15 MD(2289.00) Inc(15.3) Azm(89.0) TVD(2277.42)
VS(102.64) NS(-7.75) EW(102.76) TEMP(89.6)

#16 MD(2379.00) Inc(17.2) Azm(89.4) TVD(2363.82)
VS(127.83) NS(-7.40) EW(127.94) TEMP(91.4)

#17 MD(2469.00) Inc(19.8) Azm(92.1) TVD(2449.17)
VS(156.36) NS(-7.82) EW(156.49) TEMP(91.4)

#18 MD(2559.00) Inc(21.5) Azm(89.5) TVD(2533.38)
VS(188.08) NS(-8.24) EW(188.22) TEMP(93.2)

