

# COLUMBINE LOGGING

Scale: 5" / 100'  
Measured Depth Log

**Well Name** Rohn State LD10-68-1HN

**Location** NENE SEC9 T9N R58W

**State** CO

**County** WELD

**Country** USA

**Rig Number** PRECISION 828

**API Number** 05-123-37626

**AFE #** 200219

**Region** DENVER-JULESBURG BASIN

**Field** WILDCAT

**Spud Date** 9/30/2014

**Drilling Completed** 10/7/2014

**Surface Coordinates** 935' FNL, 330' FEL

Lat/Long: 40.77059/-103.86116

**Ground Elevation** 4739'

**K.B. Elevation** 4755'

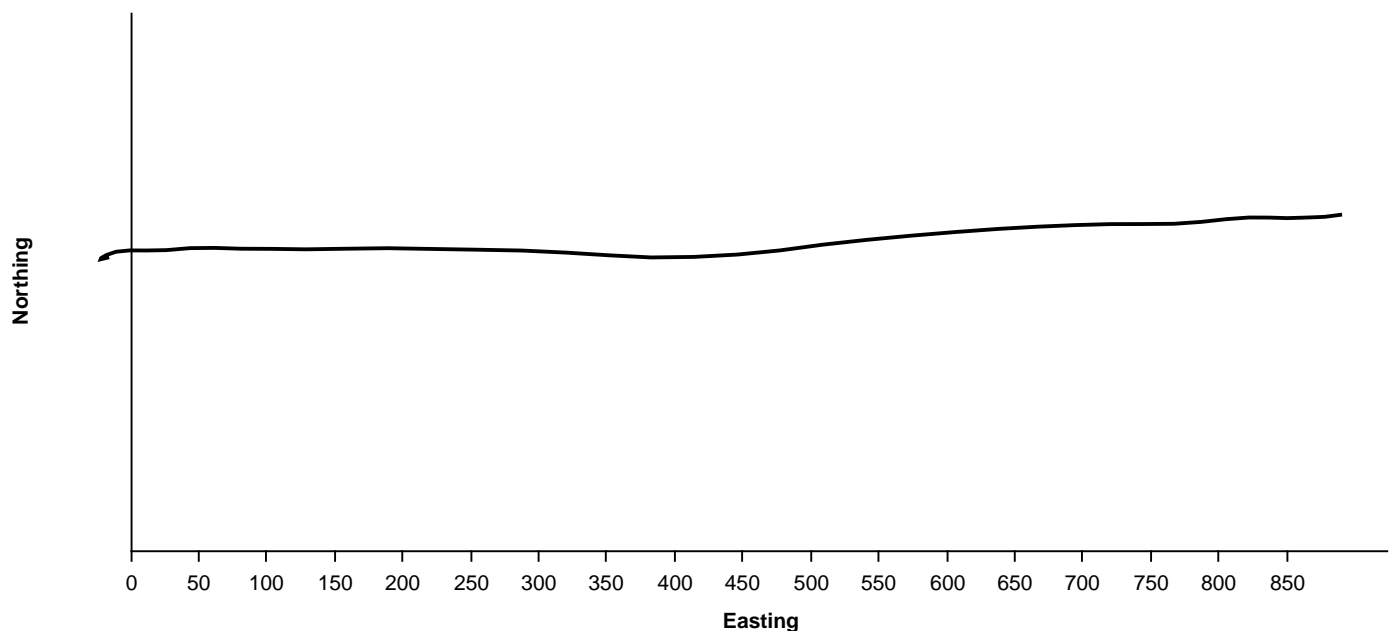
**Logged Interval** 1211' **To** 5200'

**Total Depth** 9590'

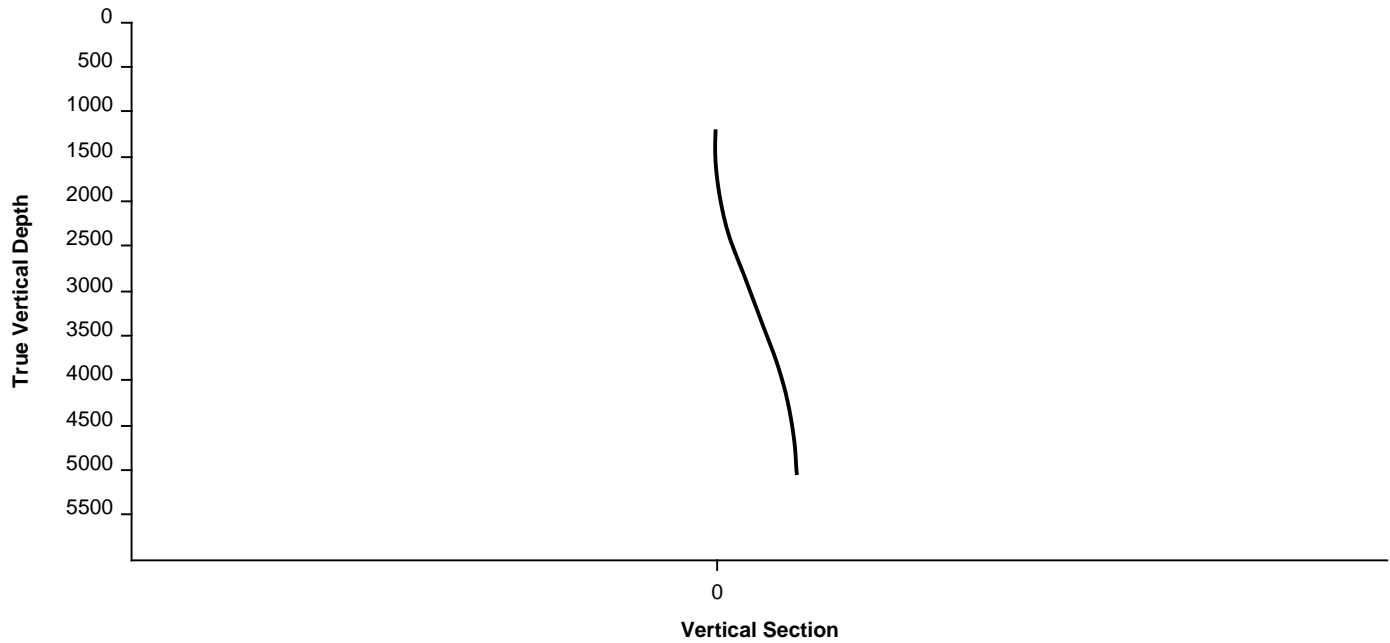
**Formation** FOX HILLS, PIERRE (PARKMAN, SUSSEX, SHANNON, TEEPEE BUTTES)

**Type of Drilling Fluid** FRESH WATER, LSND

## Survey Plan



## Survey Elevation



## Other

**WELLSITE GEOLOGISTS:** GARY L. MYERS  
C.S. METZ

LOG CONTINUES ON FILE: Rohn State LD-10-68-1HN Horiz.mplot

GEOLOGICAL SERVICES PROVIDED BY COLUMBINE LOGGING, INC.

## Operator

**Company** NOBLE ENERGY INC.

**Address** 1625 Broadway  
Denver, CO 80202

## Geologist

**Name** EVAN HOWELL, TERESA MALESARDI

**Company** NOBLE ENERGY, INC.

**Address** 1625 Broadway  
Denver, CO 80202

## Other Symbols

### Engineering

► CONNECTION (RIGHT)

◄ CONNECTION GAS

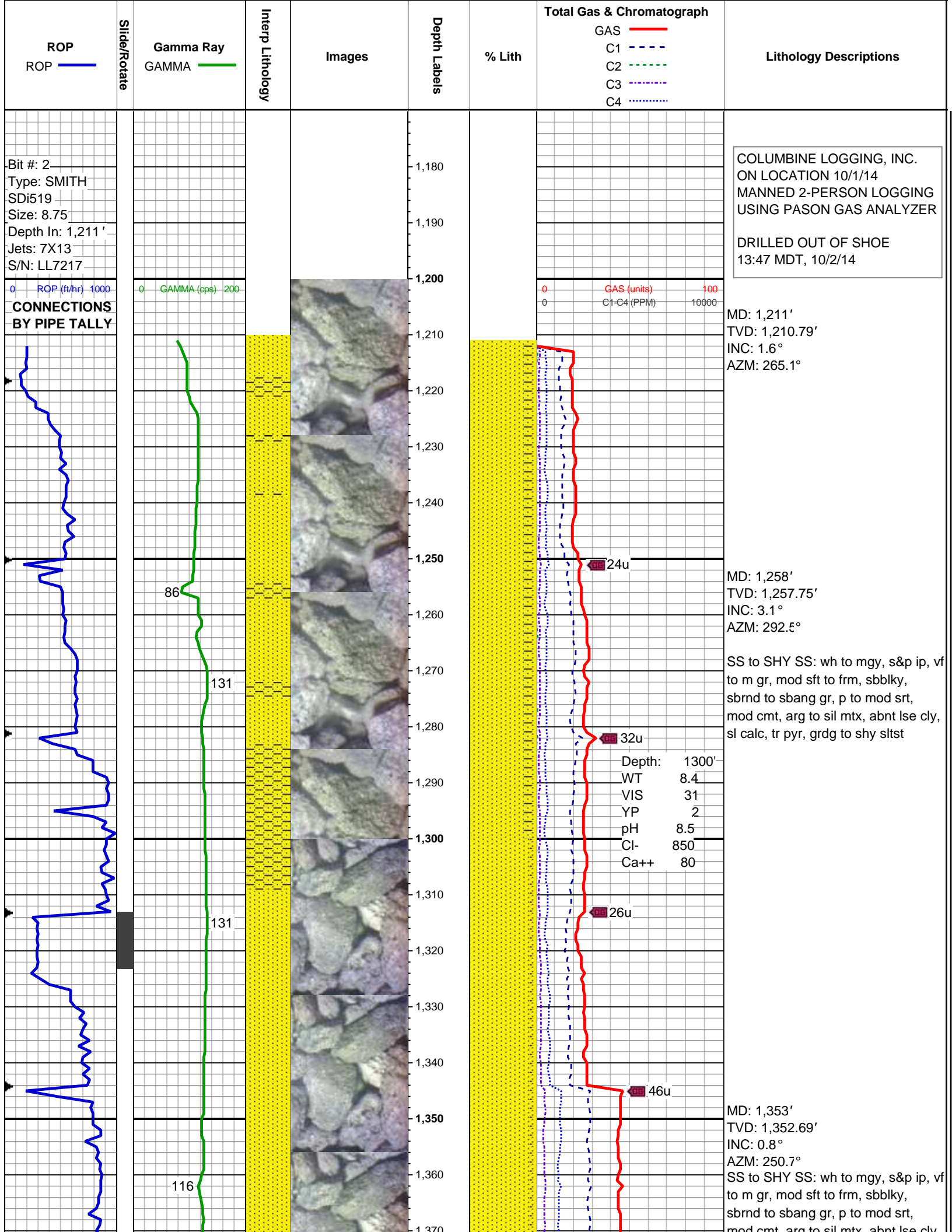
MIN DEPTH ► MN DEPTH (RIGHT)

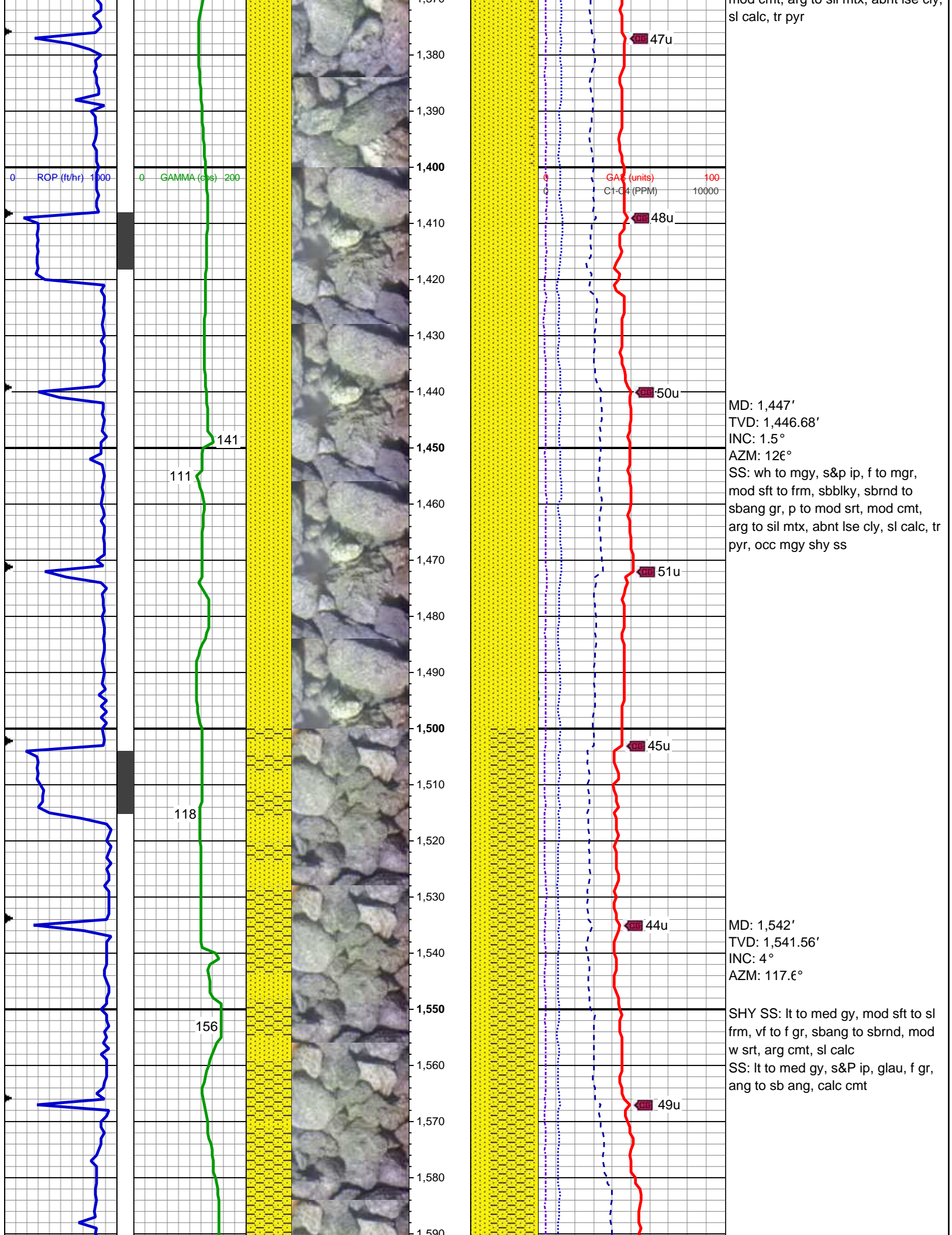
# Rock Types

 SANDSTONE

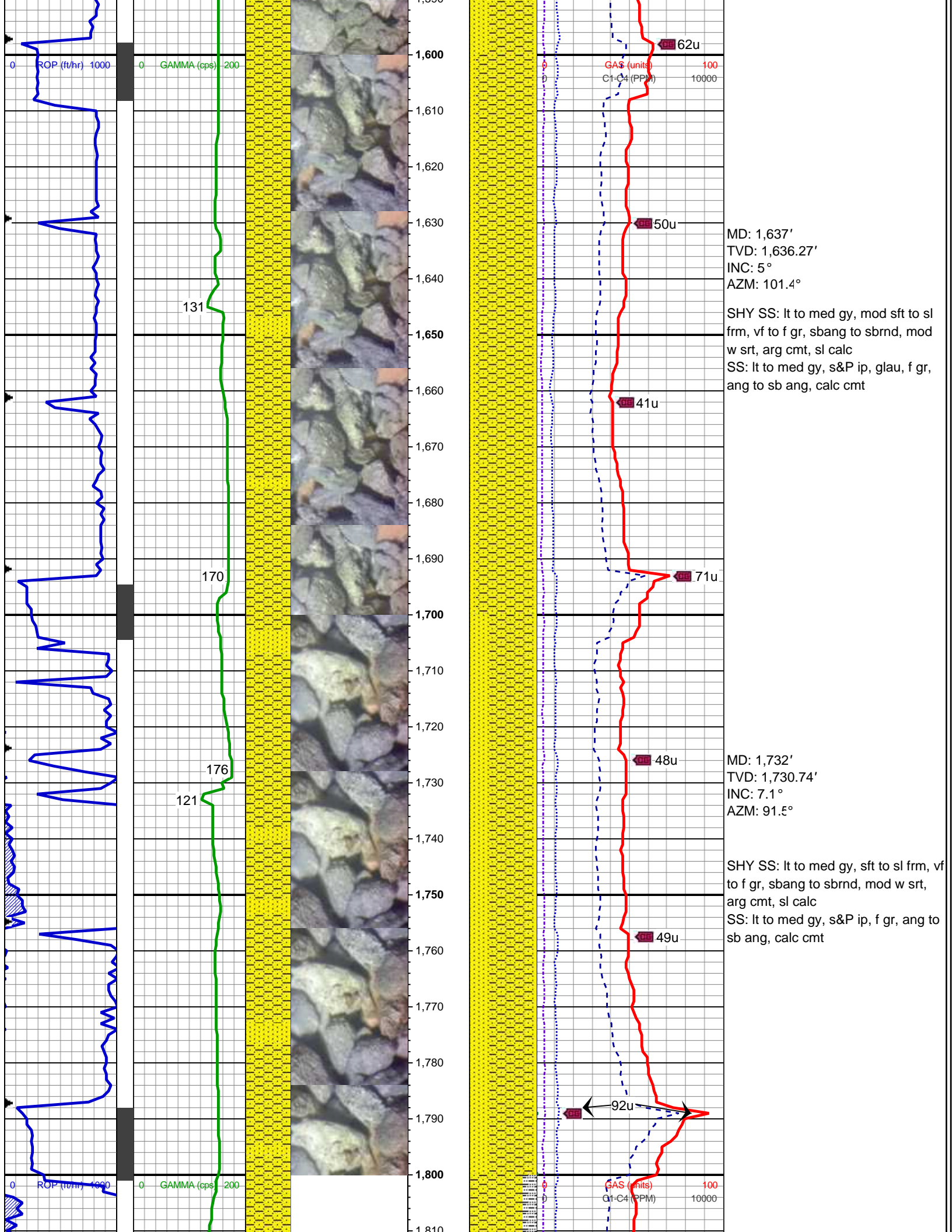
 SHALY SANDSTONE

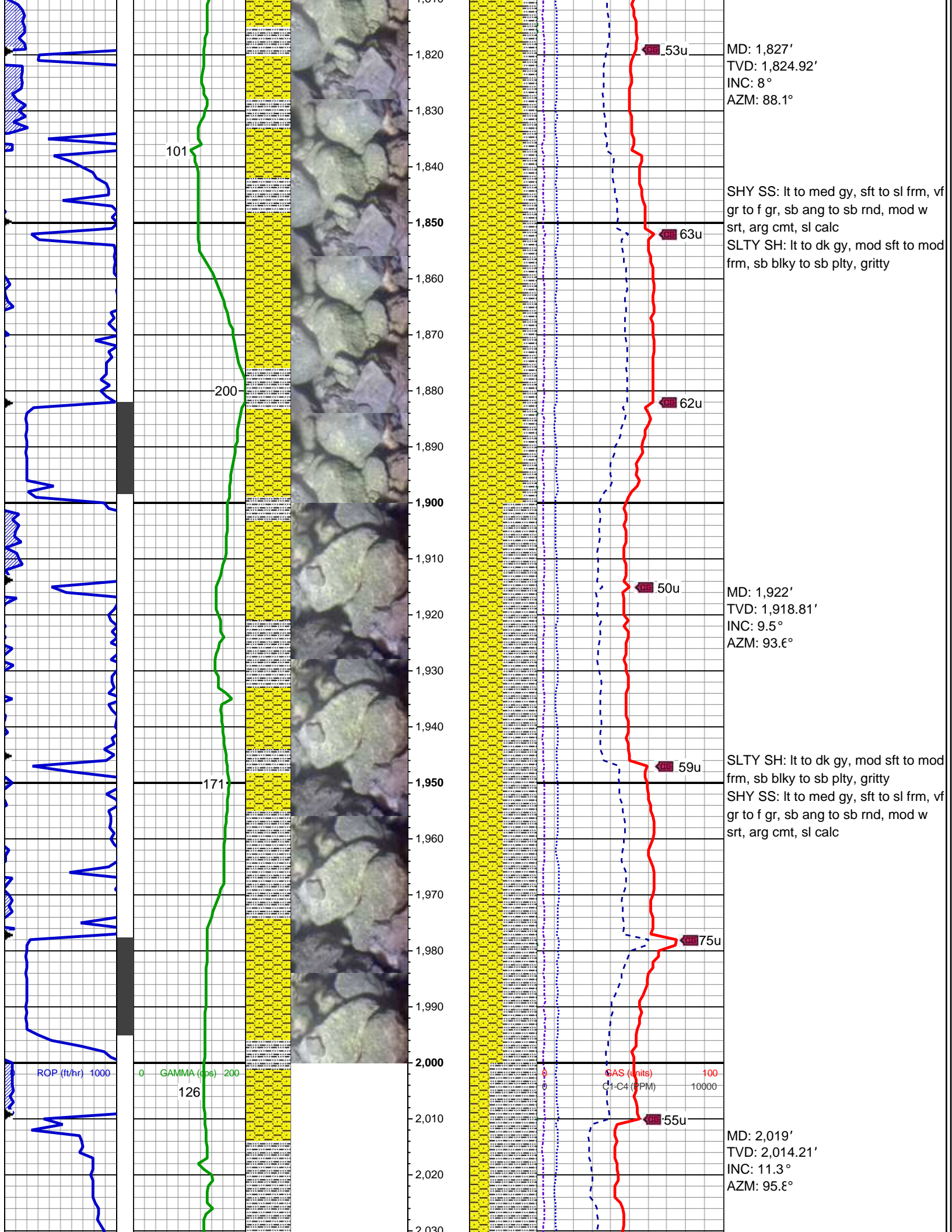
 SILTY SHALE



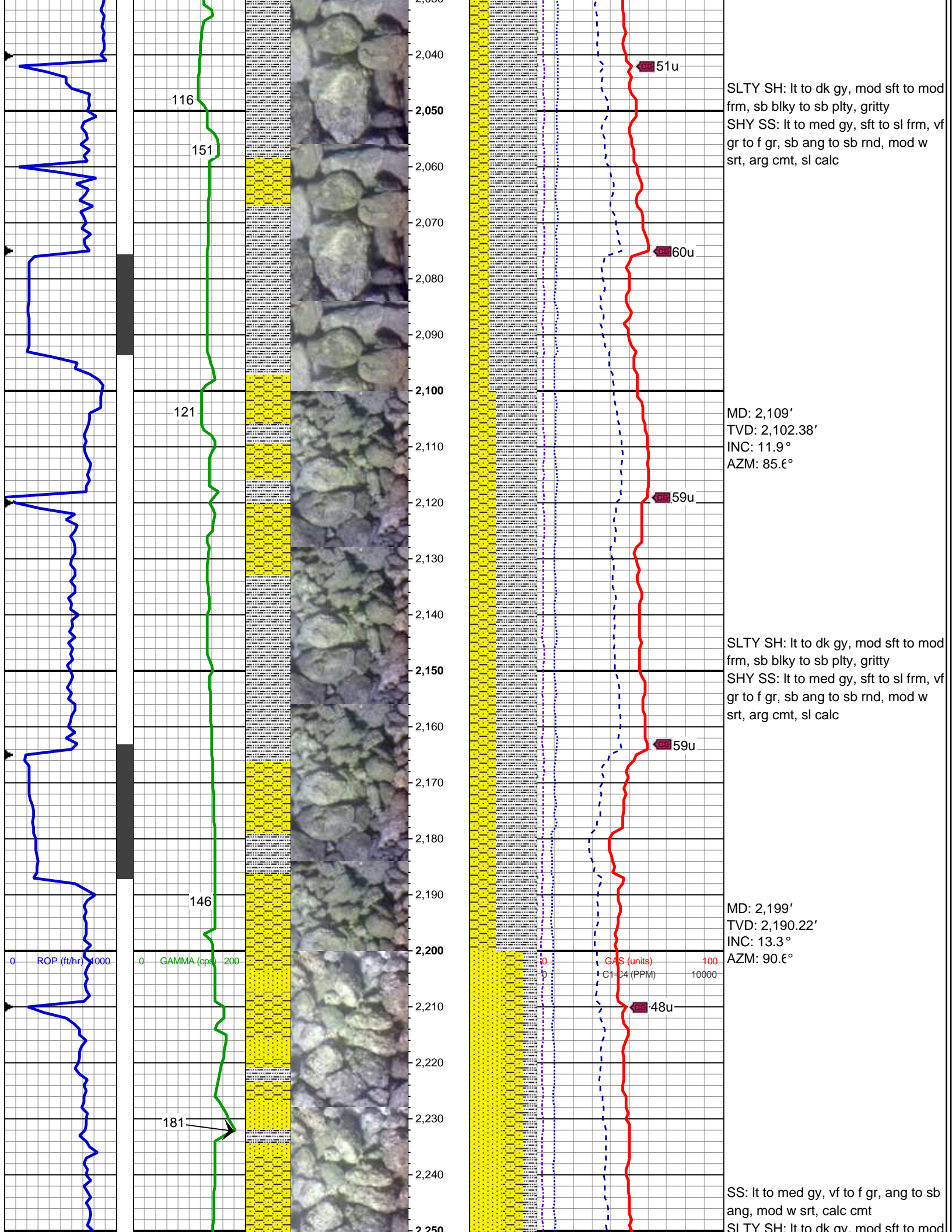




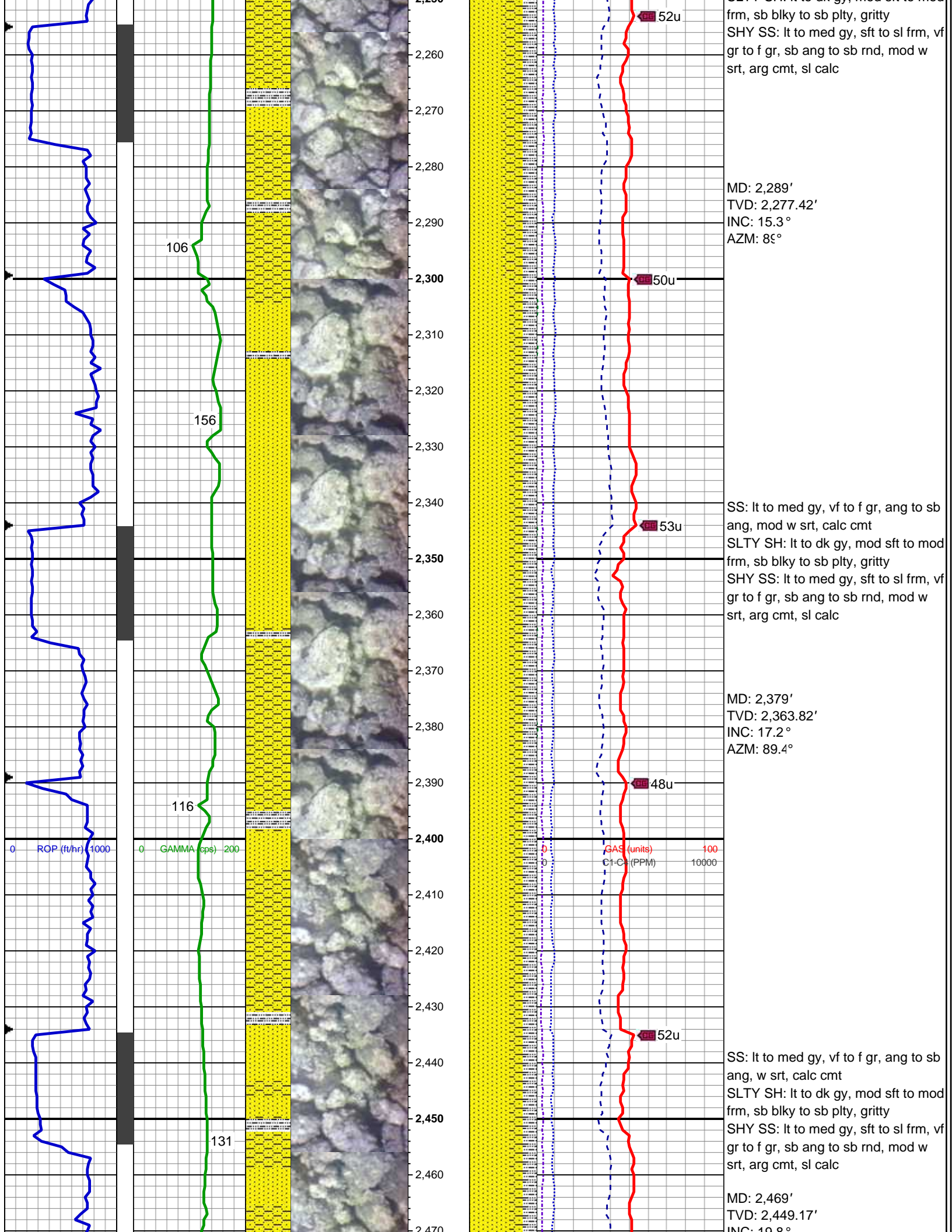


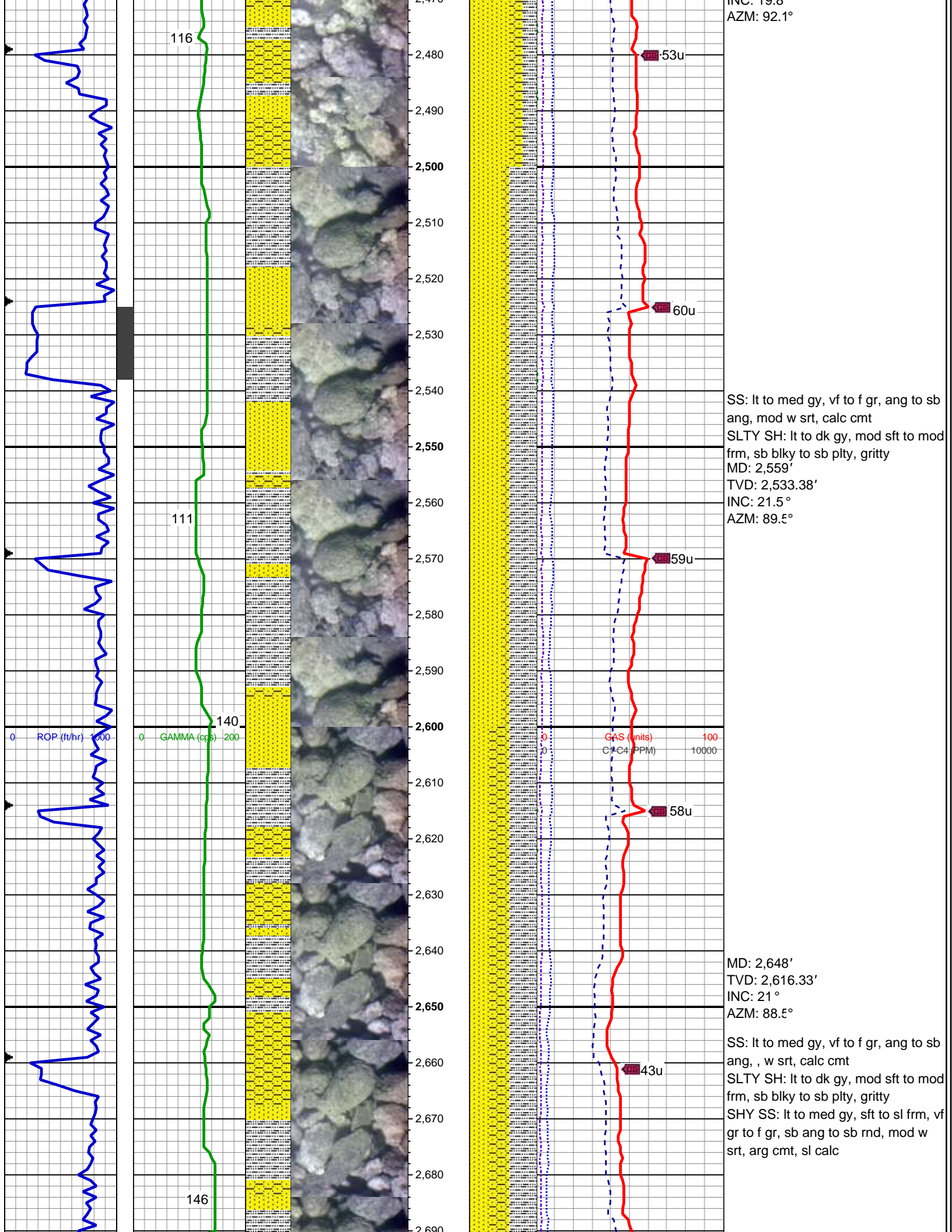




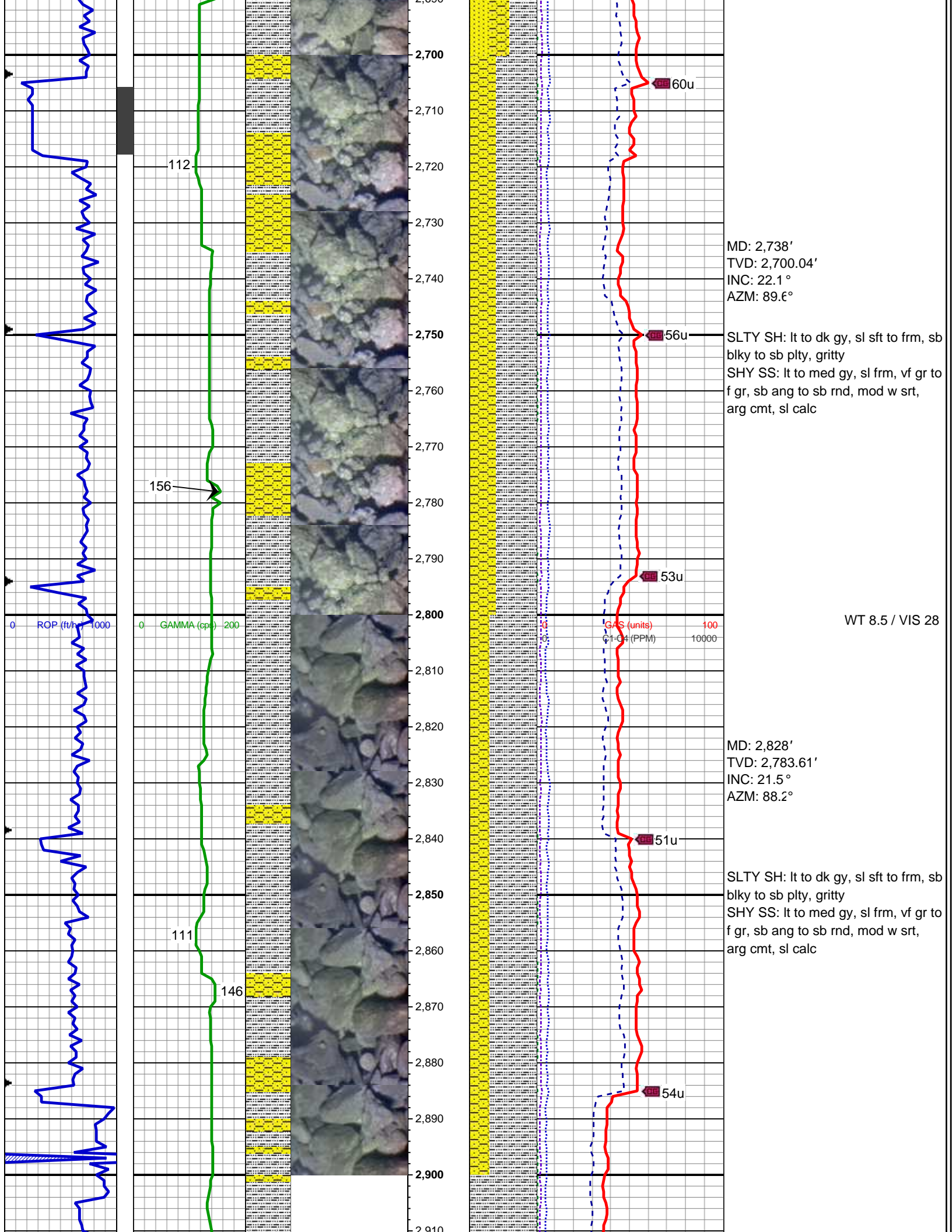




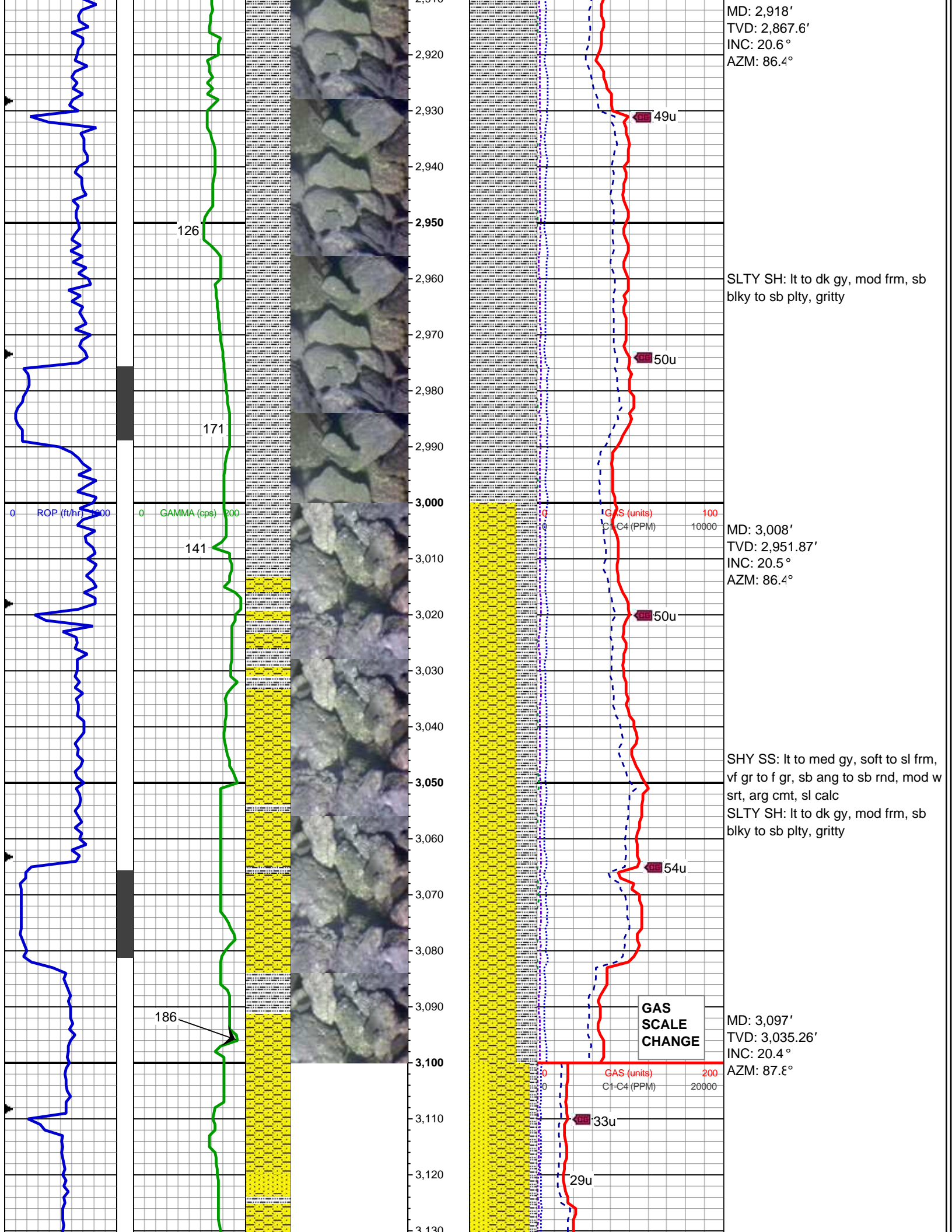


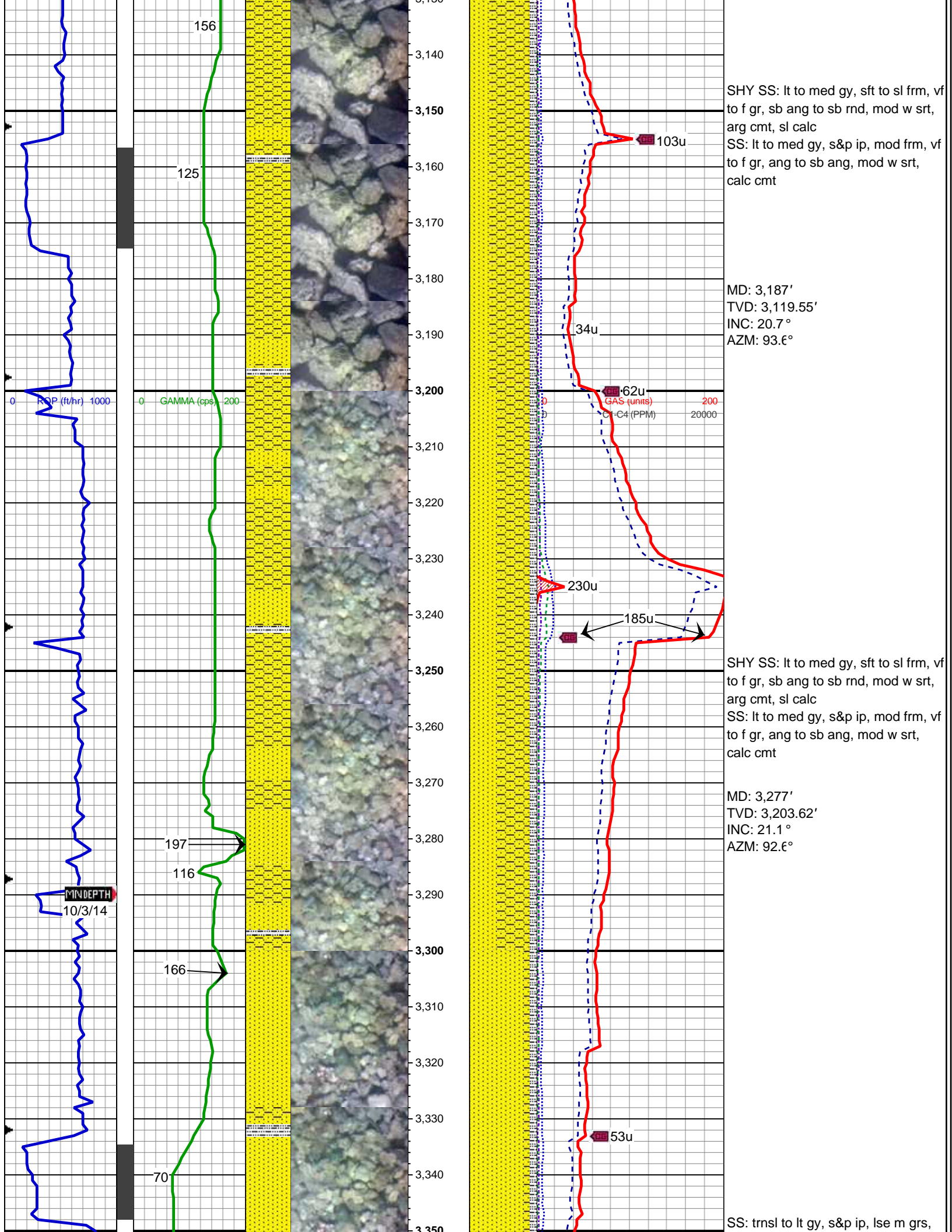




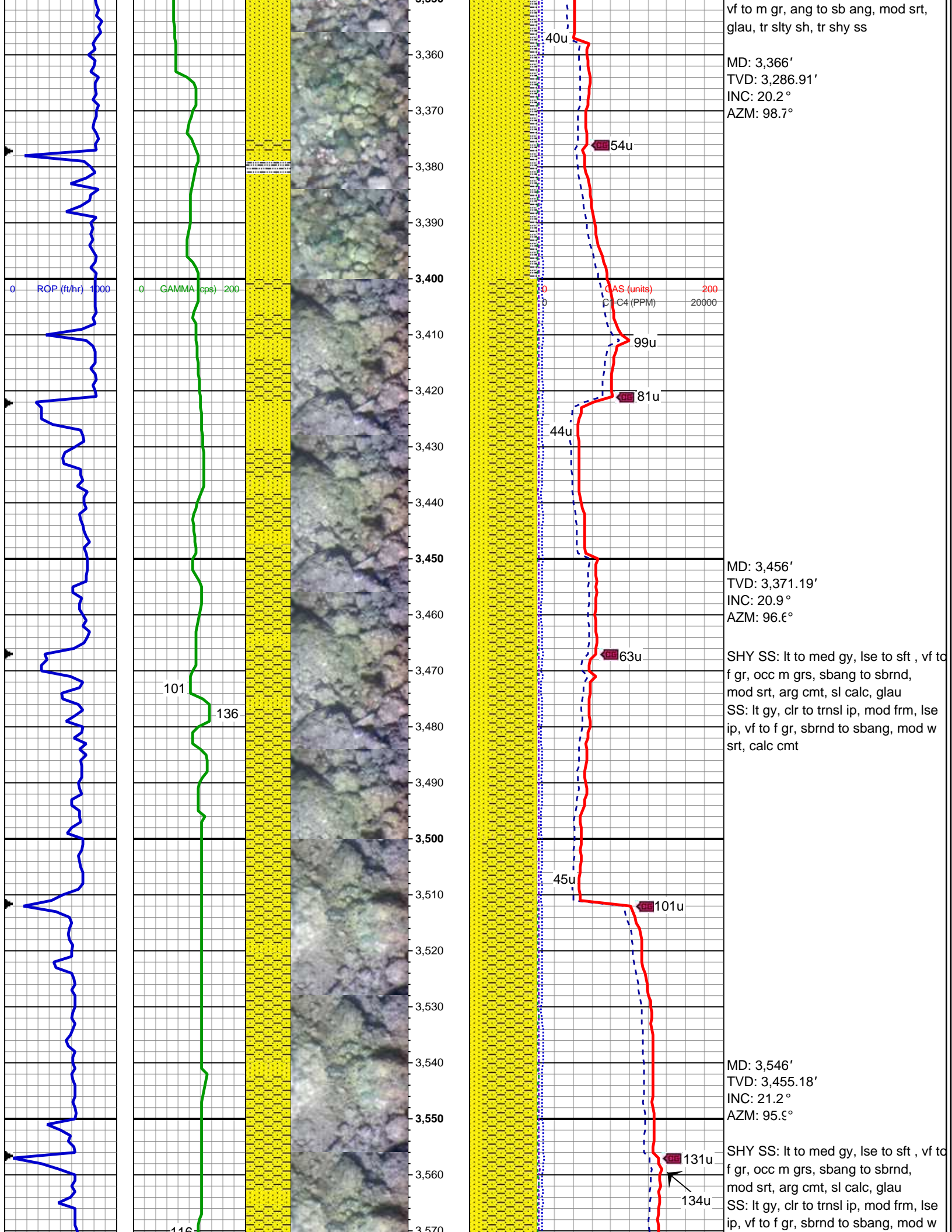




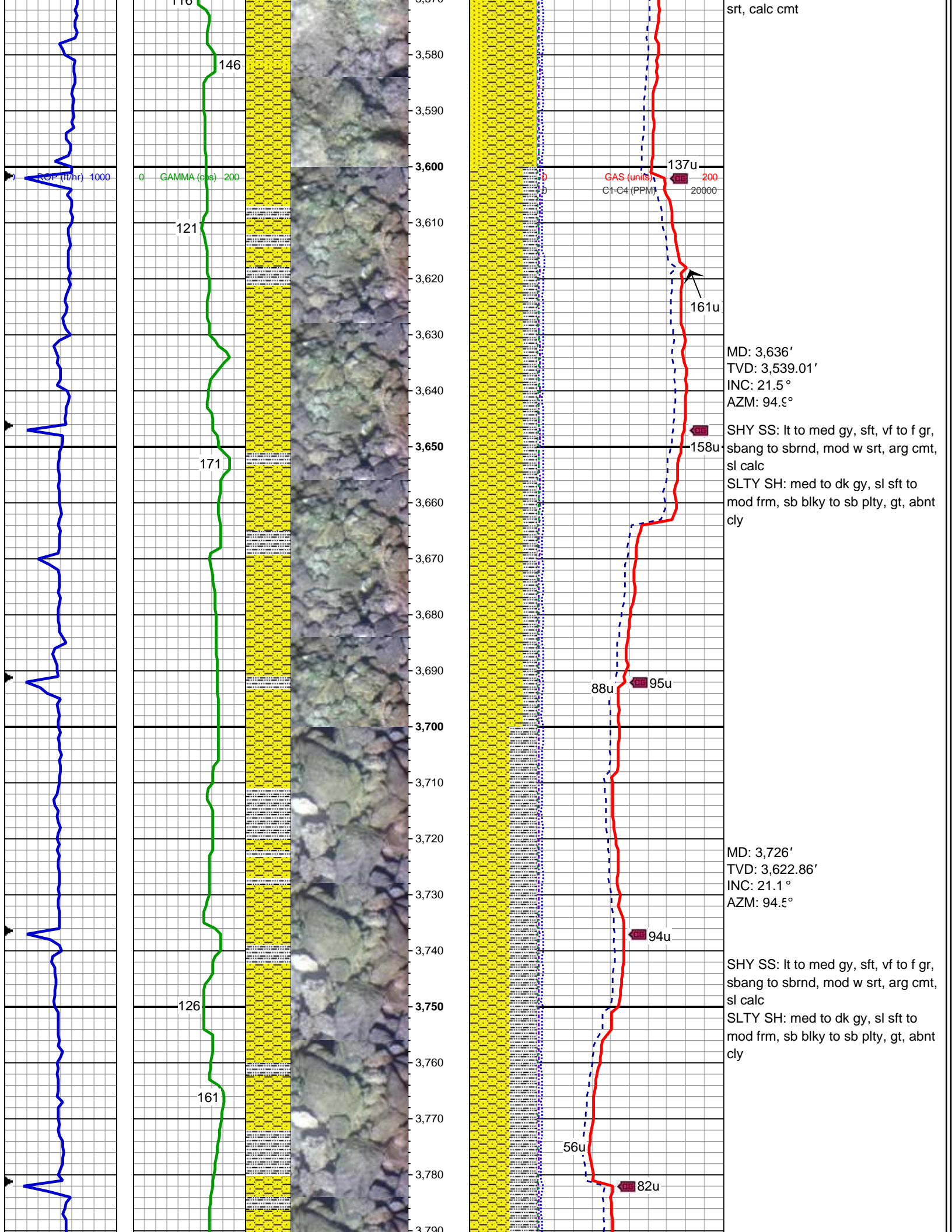


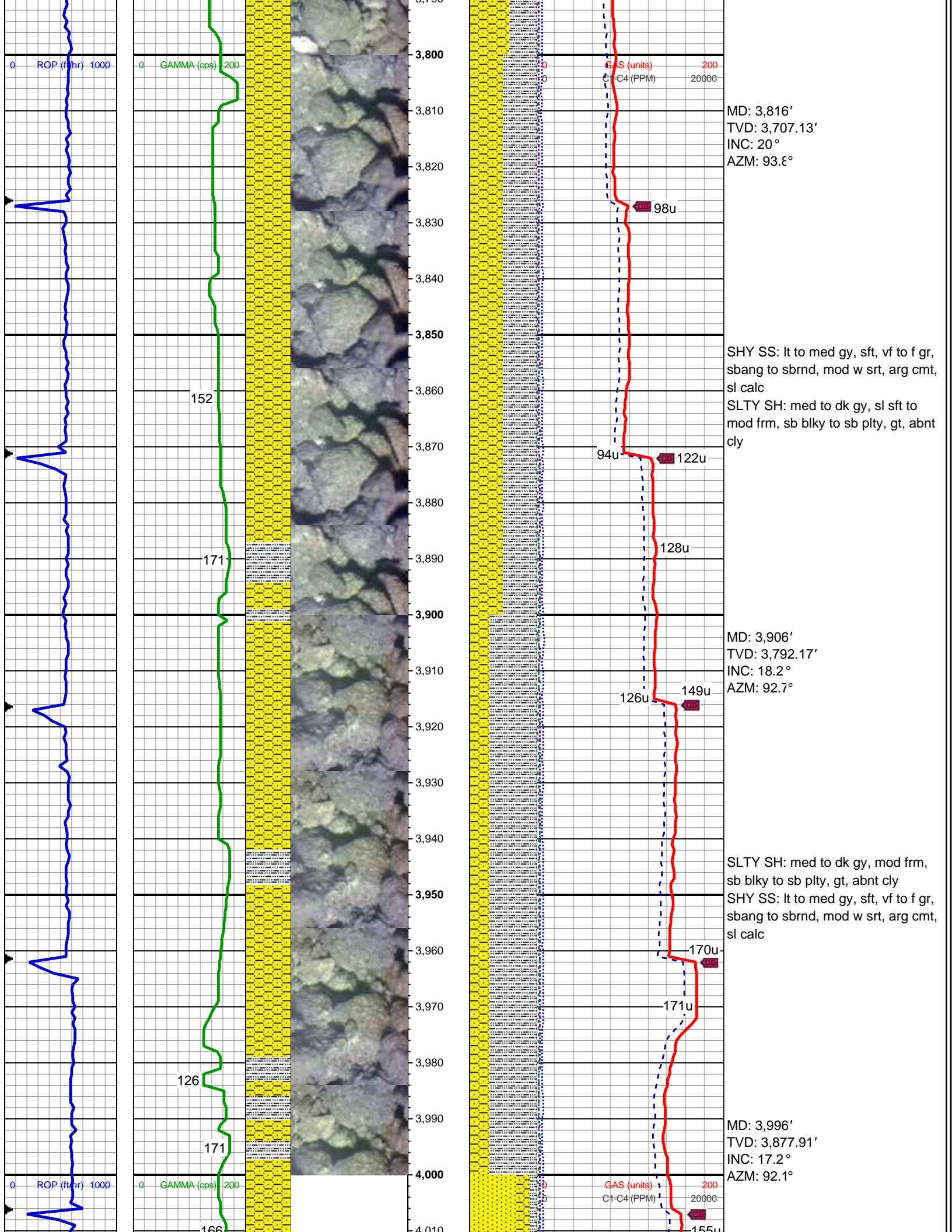




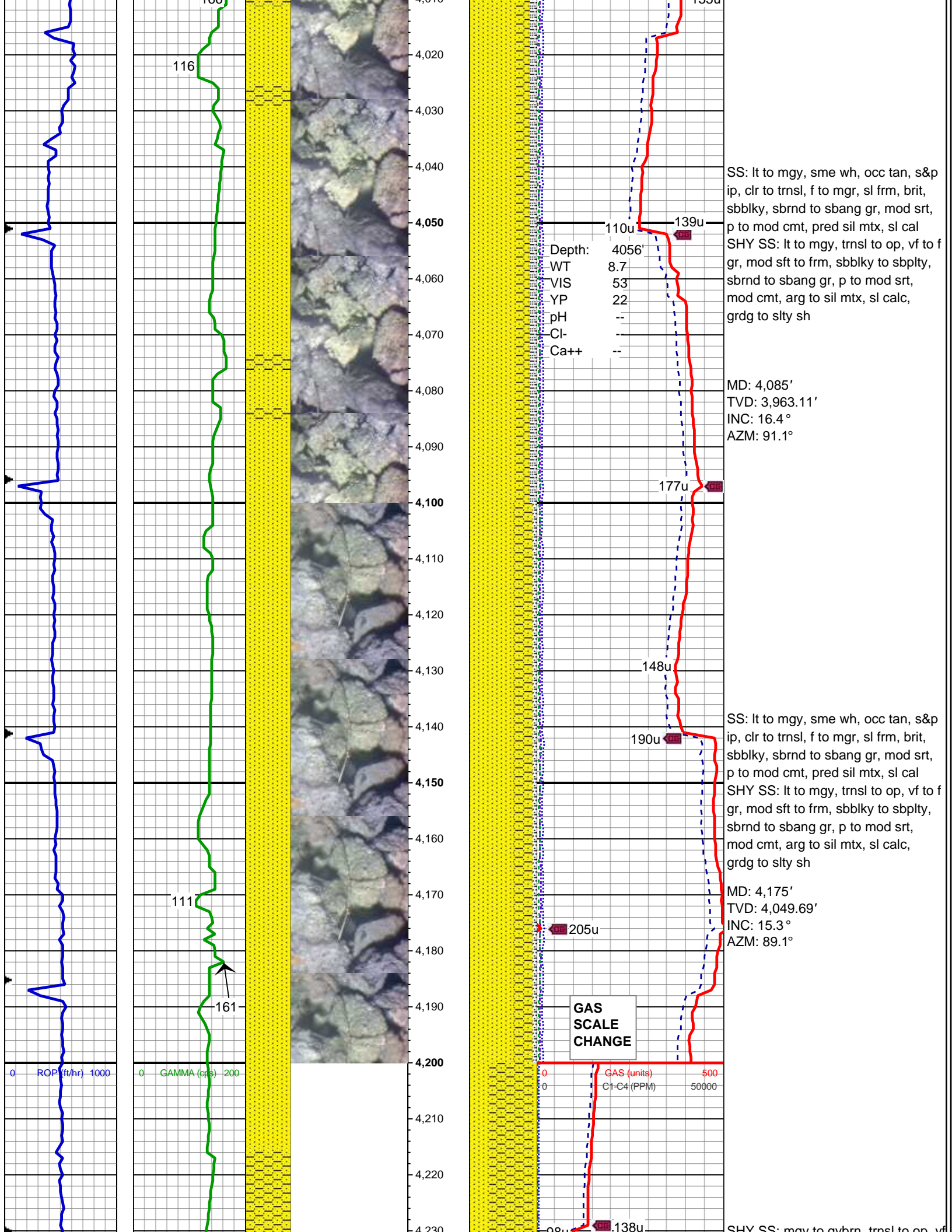




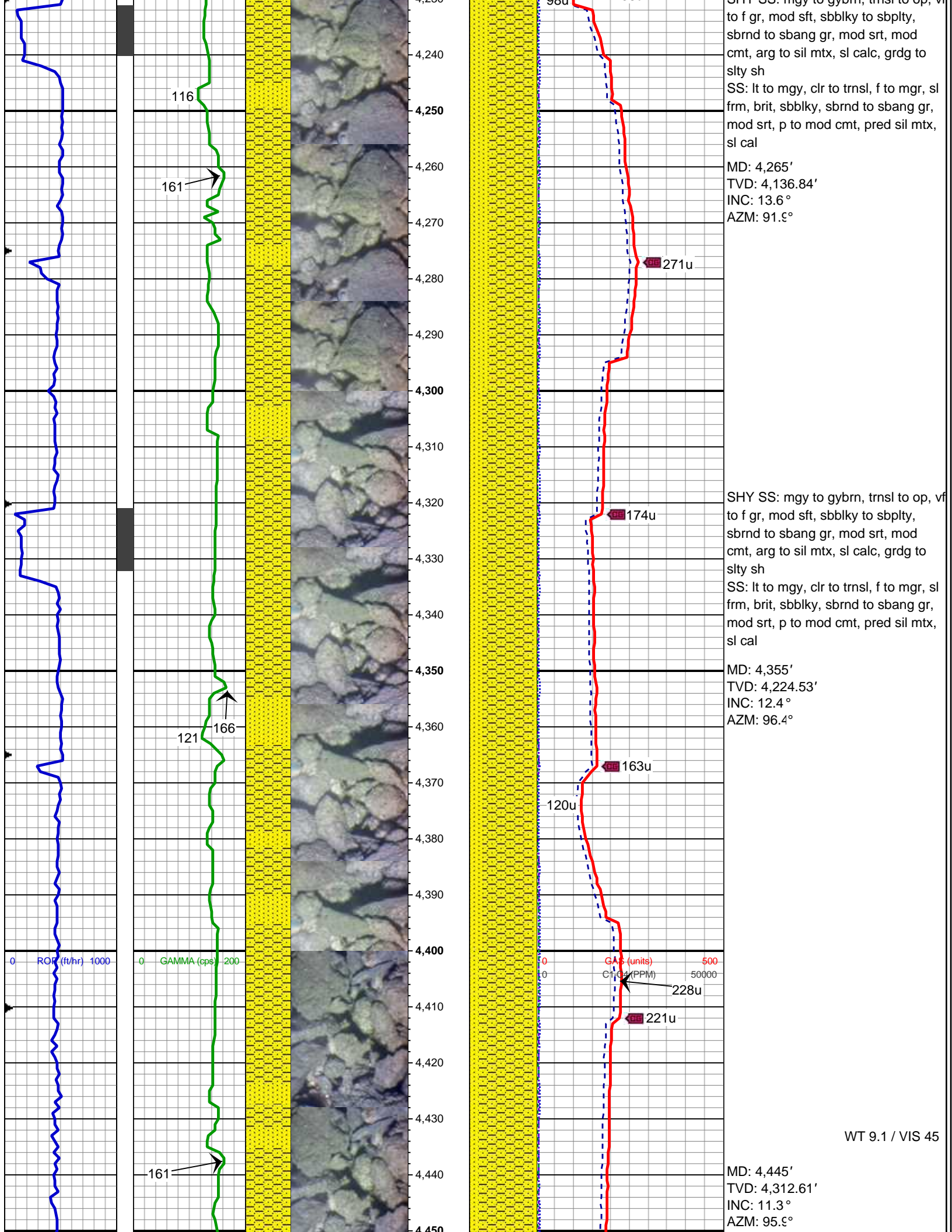


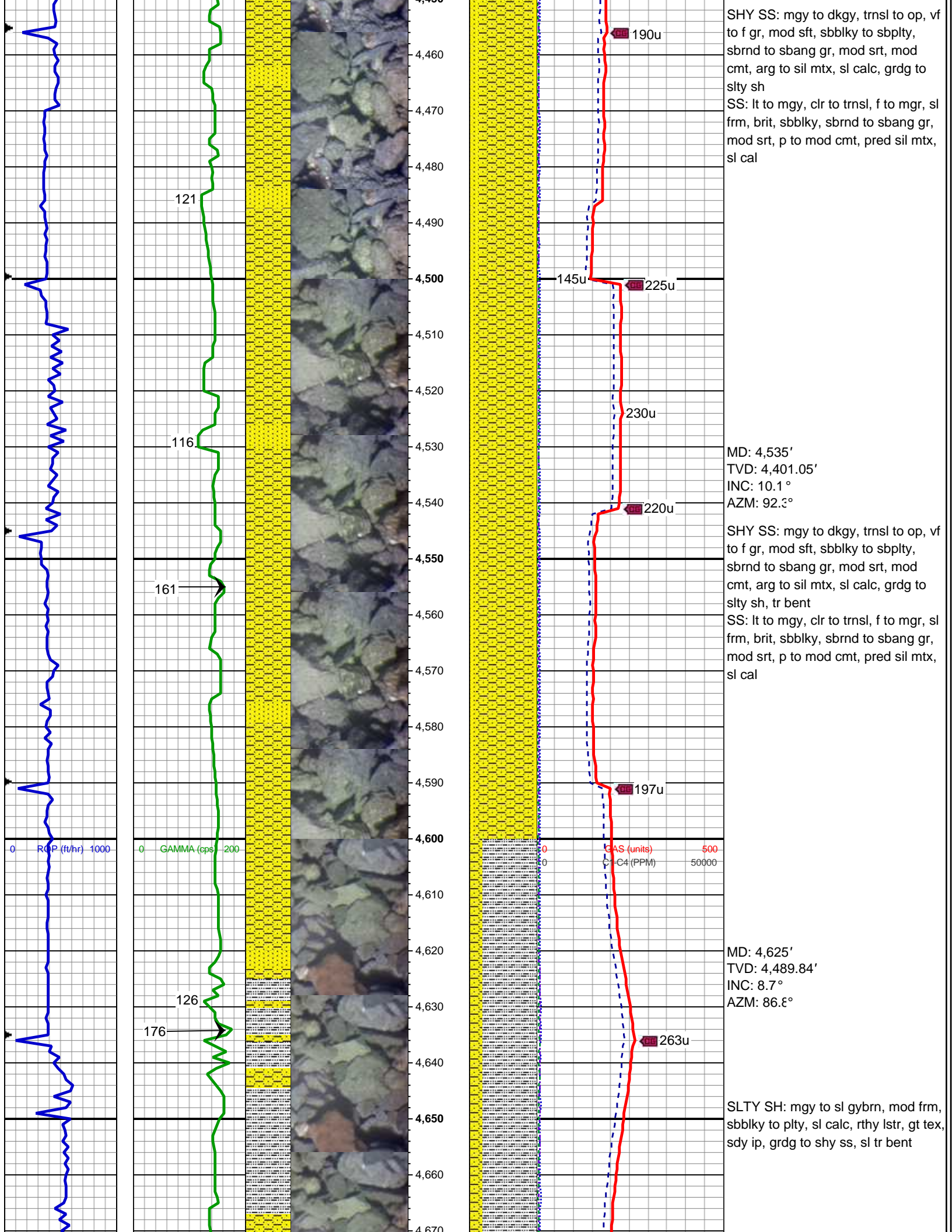




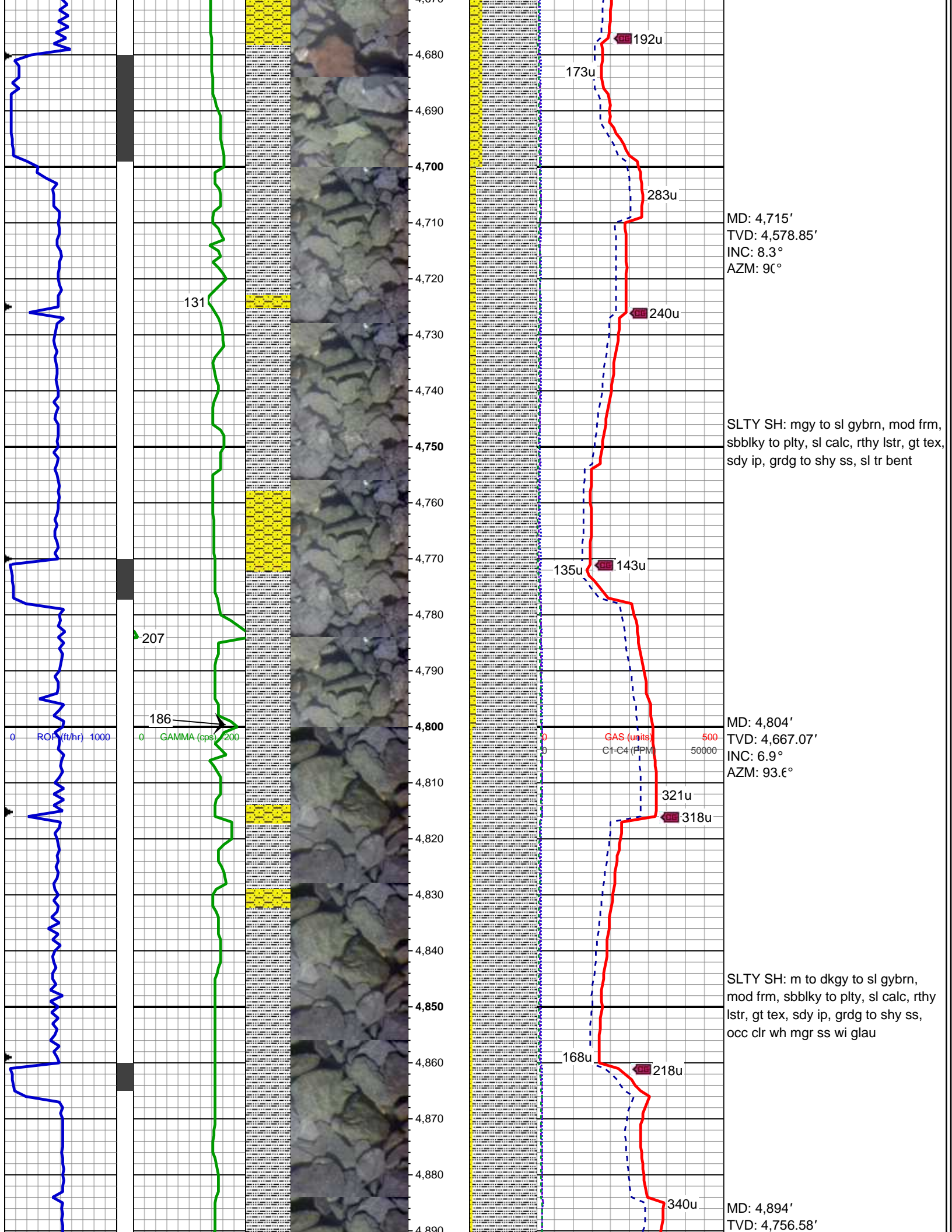




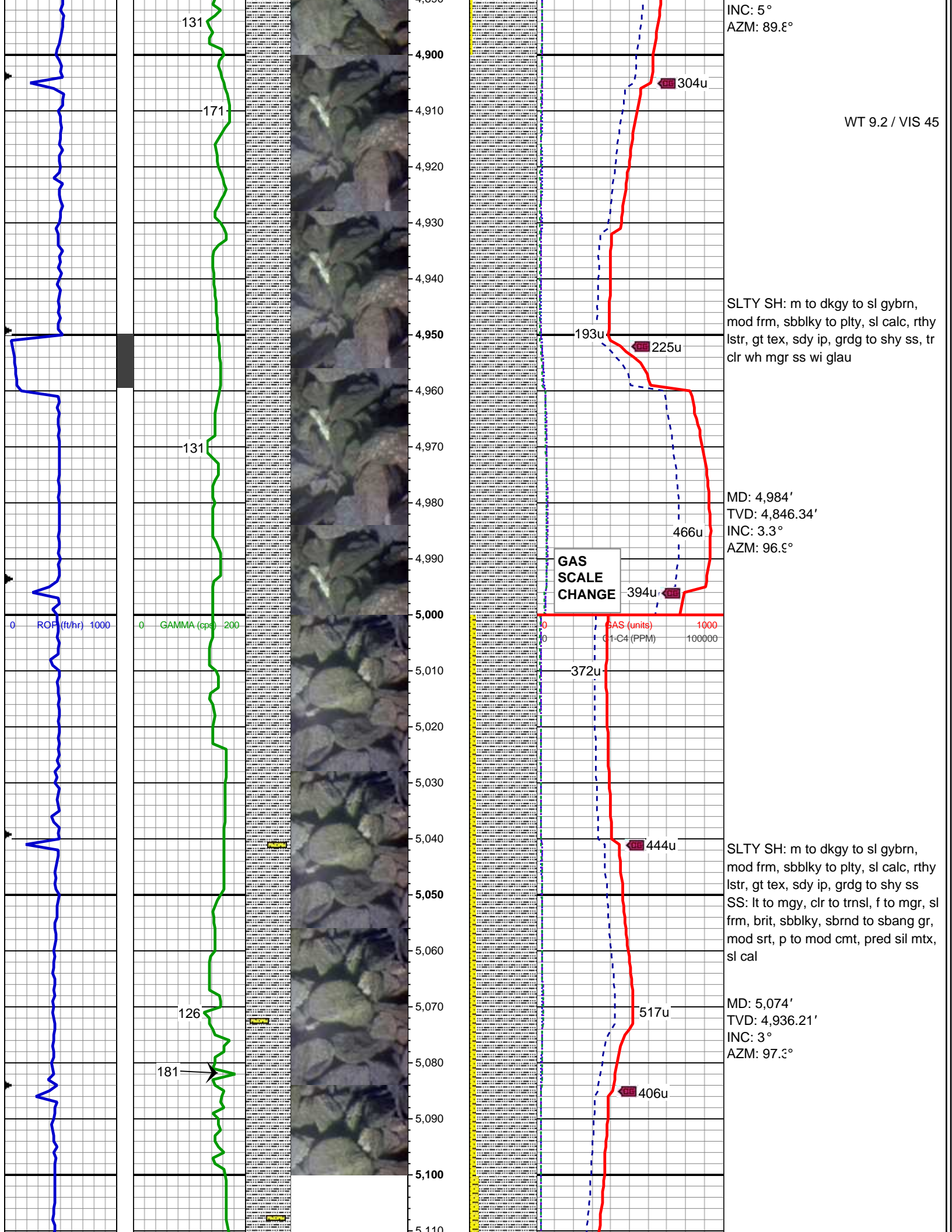


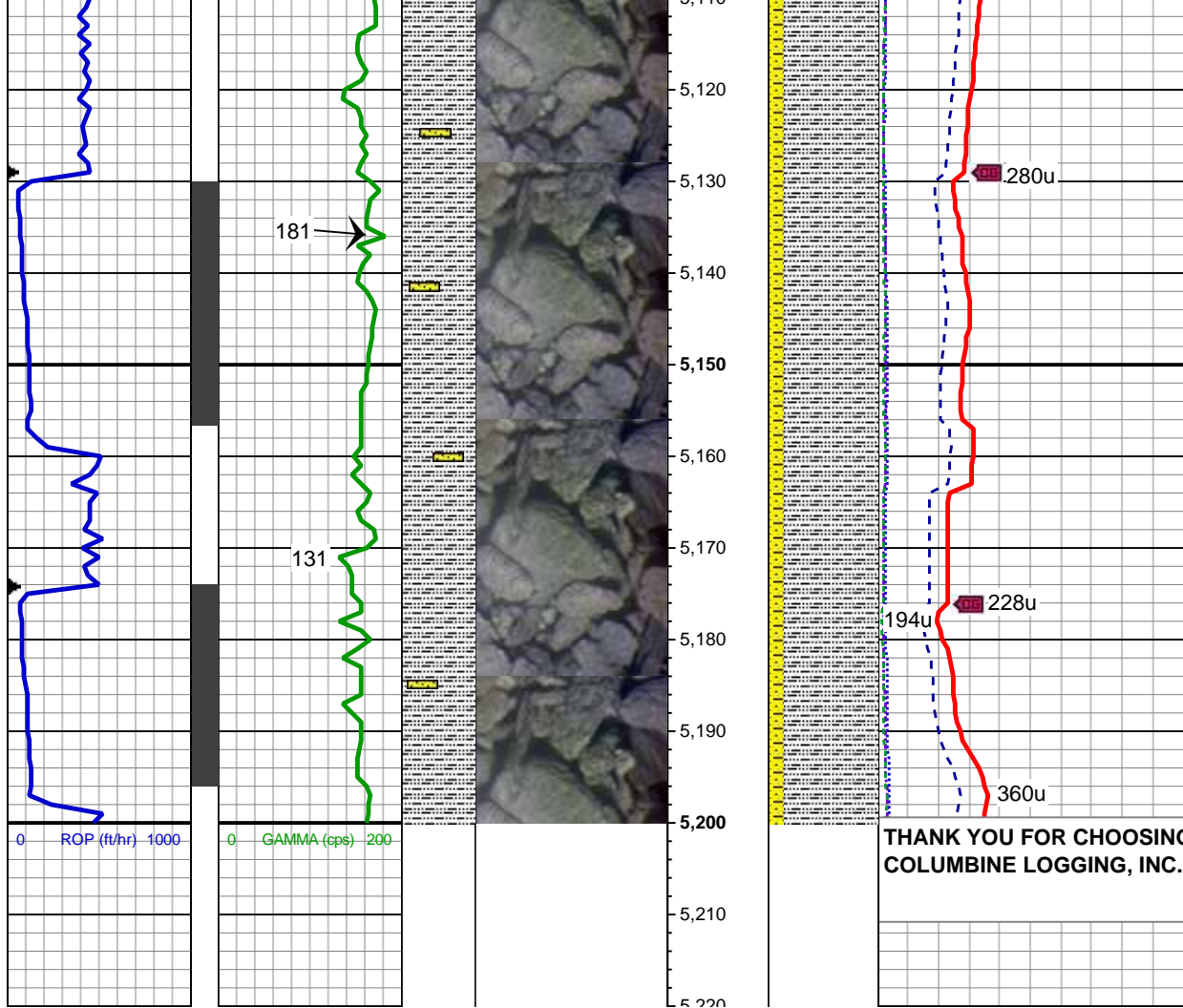












MD: 5,119'  
TVD: 4,981.14'  
INC: 3.3°  
AZM: 97.2° WT 9.5 / VIS 45

SLTY SH: m to dkgy to sl gybrn,  
mod frm, sbblky to pty, sl calc, rthy  
lstr, gt tex, sdy ip, grdg to shy ss  
SS: lt to mgy, clr to trnsl, f to mgr, sl  
frm, brit, sbblky, sbrnd to sbang gr,  
mod srt, p to mod cmt, pred sil mtx,  
sl cal

MD: 5,164'  
TVD: 5,025.94'  
INC: 7.1°  
AZM: 97.7°

WT 9.9 / VIS 43

LOG CONTINUES ON FILE:  
Rohn State LD10-68-1HN Horiz.mplot

THANK YOU FOR CHOOSING  
COLUMBINE LOGGING, INC.