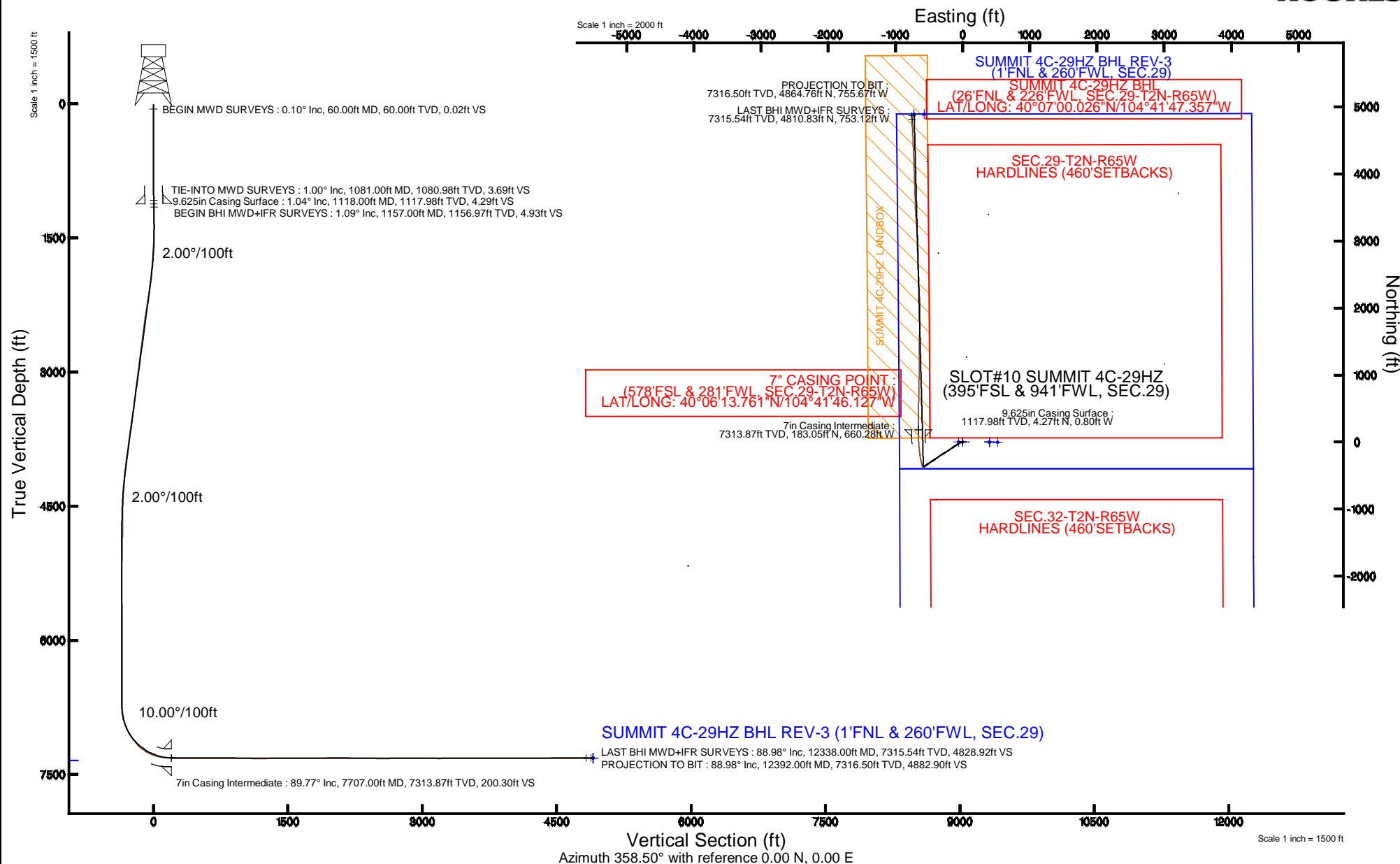


Location: COLORADO Slot: SLOT#10 SUMMIT 4C-29HZ (395'FSL & 941'FWL, SEC.29)
Field: WELD COUNTY (KERR MCGEE) Well: SUMMIT 4C-29HZ
Facility: SEC.29-T2N-R65W Wellbore: SUMMIT 4C-29HZ PWB

Plot reference wellpath is SUMMIT 4C-29HZ PWP (REV-B.0)	
True vertical depths are referenced to XTREME 6 (16KB) (RKB)	Grid System: NAD83 / Lambert Colorado SP, Northern Zone (501), US feet
Measured depths are referenced to XTREME 6 (16KB) (RKB)	North Reference: True north
XTREME 6 (16KB) (RKB) to Mean Sea Level: 4957 feet	Scale: True distance
Mean Sea Level to Mud line (At Slot: SLOT#10 SUMMIT 4C-29HZ (395FSL & 941FWL, SEC.29)): 0 feet	Depths are in feet
Coordinates are in feet referenced to Slot	Created by: amarcos on 10/30/2014



Actual Wellpath Report

SUMMIT 4C-29HZ AWP

Page 1 of 7

REFERENCE WELLPATH IDENTIFICATION

Operator	KERR-MCGEE OIL & GAS ONSHORE LP	Slot	SLOT#10 SUMMIT 4C-29HZ (395'FSL & 941'FWL, SEC.29)
Area	COLORADO	Well	SUMMIT 4C-29HZ
Field	WELD COUNTY (KERR MCGEE)	Wellbore	SUMMIT 4C-29HZ AWP
Facility	SEC.29-T2N-R65W		

REPORT SETUP INFORMATION

Projection System	NAD83 / Lambert Colorado SP, Northern Zone (501), US feet	Software System	WellArchitect® 4.0.0
North Reference	True	User	Amarcar
Scale	0.99996	Report Generated	10/30/2014 at 2:36:22 PM
Convergence at slot	n/a	Database/Source file	WellArchitectDB/SUMMIT_4C-29HZ_AWP.xml

WELLPATH LOCATION

	Local coordinates		Grid coordinates		Geographic coordinates	
	North[ft]	East[ft]	Easting[US ft]	Northing[US ft]	Latitude	Longitude
Slot Location	-0.20	-399.80	3225518.42	1281509.01	40°06'11.952"N	104°41'37.630"W
Facility Reference Pt			3225918.18	1281512.85	40°06'11.954"N	104°41'32.485"W
Field Reference Pt			3197771.84	1268891.29	40°04'09.600"N	104°47'36.000"W

WELLPATH DATUM

Calculation method	Minimum curvature	XTREME 6 (16'KB) (RKB) to Facility Vertical Datum	4957.00ft
Horizontal Reference Pt	Slot	XTREME 6 (16'KB) (RKB) to Mean Sea Level	4957.00ft
Vertical Reference Pt	XTREME 6 (16'KB) (RKB)	XTREME 6 (16'KB) (RKB) to Mud Line at Slot (SLOT#10 SUMMIT 4C-29HZ (395'FSL & 941'FWL, SEC.29))	4957.00ft
MD Reference Pt	XTREME 6 (16'KB) (RKB)	Section Origin	N 0.00, E 0.00 ft
Field Vertical Reference	Mean Sea Level	Section Azimuth	358.50°

Actual Wellpath Report

SUMMIT 4C-29HZ AWP

Page 2 of 7

REFERENCE WELLPATH IDENTIFICATION

Operator	KERR-MCGEE OIL & GAS ONSHORE LP	Slot	SLOT#10 SUMMIT 4C-29HZ (395'FSL & 941'FWL, SEC.29)
Area	COLORADO	Well	SUMMIT 4C-29HZ
Field	WELD COUNTY (KERR MCGEE)	Wellbore	SUMMIT 4C-29HZ AWP
Facility	SEC.29-T2N-R65W		

WELLPATH DATA (139 stations) † = interpolated/extrapolated station

MD [ft]	Inclination [°]	Azimuth [°]	TVD [ft]	Vert Sect [ft]	North [ft]	East [ft]	Latitude	Longitude	DLS [°/100ft]	Comments
0.00†	0.000	55.500	0.00	0.00	0.00	0.00	40°06'11.952"N	104°41'37.630"W	0.00	
16.00	0.000	55.500	16.00	0.00	0.00	0.00	40°06'11.952"N	104°41'37.630"W	0.00	
60.00	0.100	55.500	60.00	0.02	0.02	0.03	40°06'11.952"N	104°41'37.630"W	0.23	BEGIN MWD SURVEYS
129.00	0.200	242.400	129.00	0.00	0.00	-0.03	40°06'11.952"N	104°41'37.630"W	0.43	
227.00	0.100	98.400	227.00	-0.09	-0.09	-0.09	40°06'11.951"N	104°41'37.631"W	0.29	
326.00	0.100	22.600	326.00	-0.03	-0.02	0.03	40°06'11.952"N	104°41'37.630"W	0.12	
406.00	0.100	81.900	406.00	0.05	0.05	0.12	40°06'11.952"N	104°41'37.628"W	0.12	
486.00	0.400	20.900	486.00	0.31	0.32	0.29	40°06'11.955"N	104°41'37.626"W	0.45	
566.00	0.300	27.300	566.00	0.75	0.77	0.49	40°06'11.960"N	104°41'37.624"W	0.13	
646.00	0.200	351.800	646.00	1.08	1.09	0.56	40°06'11.963"N	104°41'37.623"W	0.22	
726.00	0.400	4.900	726.00	1.49	1.51	0.57	40°06'11.967"N	104°41'37.623"W	0.26	
806.00	0.200	320.300	805.99	1.88	1.89	0.50	40°06'11.971"N	104°41'37.624"W	0.37	
886.00	0.200	304.200	885.99	2.07	2.08	0.30	40°06'11.973"N	104°41'37.626"W	0.07	
966.00	0.200	355.300	965.99	2.29	2.30	0.17	40°06'11.975"N	104°41'37.628"W	0.22	
1046.00	1.100	331.530	1045.99	3.12	3.11	-0.21	40°06'11.983"N	104°41'37.633"W	1.15	
1081.00	1.000	334.400	1080.98	3.69	3.68	-0.50	40°06'11.988"N	104°41'37.636"W	0.32	TIE-INTO MWD SURVEYS
1157.00	1.090	328.590	1156.97	4.93	4.90	-1.16	40°06'12.000"N	104°41'37.645"W	0.18	BEGIN BHI MWD+IFR SURVEYS
1249.00	1.720	281.180	1248.94	5.99	5.91	-2.97	40°06'12.010"N	104°41'37.668"W	1.38	
1340.00	2.710	274.480	1339.87	6.51	6.34	-6.46	40°06'12.015"N	104°41'37.713"W	1.12	
1431.00	3.580	258.660	1430.74	6.25	5.95	-11.39	40°06'12.011"N	104°41'37.777"W	1.34	
1523.00	5.250	245.660	1522.46	4.13	3.65	-18.04	40°06'11.988"N	104°41'37.862"W	2.11	
1612.00	7.230	243.940	1610.93	0.22	-0.48	-26.78	40°06'11.947"N	104°41'37.975"W	2.23	
1702.00	9.150	238.970	1700.01	-5.66	-6.66	-38.00	40°06'11.886"N	104°41'38.119"W	2.27	
1792.00	10.780	239.690	1788.65	-13.25	-14.60	-51.40	40°06'11.808"N	104°41'38.291"W	1.82	
1883.00	10.750	239.860	1878.05	-21.41	-23.16	-66.09	40°06'11.723"N	104°41'38.480"W	0.05	
1973.00	11.870	236.920	1966.30	-30.28	-32.42	-81.10	40°06'11.632"N	104°41'38.674"W	1.40	
2064.00	13.280	233.020	2055.12	-41.25	-43.82	-97.30	40°06'11.519"N	104°41'38.882"W	1.81	
2155.00	14.790	232.800	2143.40	-54.10	-57.13	-114.90	40°06'11.387"N	104°41'39.109"W	1.66	
2336.00	15.100	233.610	2318.28	-81.06	-85.08	-152.28	40°06'11.111"N	104°41'39.590"W	0.21	
2518.00	13.960	236.340	2494.45	-106.30	-111.32	-189.64	40°06'10.852"N	104°41'40.070"W	0.73	
2700.00	13.610	236.280	2671.21	-129.41	-135.37	-225.72	40°06'10.614"N	104°41'40.535"W	0.19	
2870.00	13.170	239.220	2836.59	-149.54	-156.39	-259.00	40°06'10.407"N	104°41'40.963"W	0.48	
3041.00	15.540	239.000	3002.24	-170.35	-178.16	-295.37	40°06'10.191"N	104°41'41.431"W	1.39	
3211.00	13.720	238.360	3166.72	-191.68	-200.46	-332.06	40°06'09.971"N	104°41'41.903"W	1.07	
3381.00	13.080	236.430	3332.09	-212.02	-221.68	-365.25	40°06'09.761"N	104°41'42.330"W	0.46	
3552.00	15.380	232.620	3497.84	-235.58	-246.15	-399.40	40°06'09.520"N	104°41'42.770"W	1.45	
3722.00	11.960	232.620	3663.00	-259.13	-270.53	-431.32	40°06'09.279"N	104°41'43.181"W	2.01	
3891.00	14.720	237.280	3827.43	-280.52	-292.77	-463.30	40°06'09.059"N	104°41'43.592"W	1.75	
4060.00	13.110	233.690	3991.47	-302.59	-315.73	-496.81	40°06'08.832"N	104°41'44.023"W	1.08	
4146.00	10.360	232.010	4075.66	-312.76	-326.27	-510.77	40°06'08.728"N	104°41'44.203"W	3.22	
4231.00	8.500	229.330	4159.51	-321.27	-335.07	-521.56	40°06'08.641"N	104°41'44.342"W	2.25	
4317.00	9.620	240.230	4244.44	-328.69	-342.78	-532.62	40°06'08.565"N	104°41'44.484"W	2.38	
4402.00	8.660	239.110	4328.36	-335.19	-349.59	-544.28	40°06'08.497"N	104°41'44.634"W	1.15	
4487.00	6.020	250.050	4412.66	-339.75	-354.40	-553.96	40°06'08.450"N	104°41'44.759"W	3.50	
4572.00	3.410	250.170	4497.37	-341.95	-356.78	-560.53	40°06'08.426"N	104°41'44.843"W	3.07	

Actual Wellpath Report

SUMMIT 4C-29HZ AWP

Page 3 of 7

REFERENCE WELLPATH IDENTIFICATION

Operator	KERR-MCGEE OIL & GAS ONSHORE LP	Slot	SLOT#10 SUMMIT 4C-29HZ (395'FSL & 941'FWL, SEC.29)
Area	COLORADO	Well	SUMMIT 4C-29HZ
Field	WELD COUNTY (KERR MCGEE)	Wellbore	SUMMIT 4C-29HZ AWP
Facility	SEC.29-T2N-R65W		

WELLPATH DATA (139 stations) † = interpolated/extrapolated station

MD [ft]	Inclination [°]	Azimuth [°]	TVD [ft]	Vert Sect [ft]	North [ft]	East [ft]	Latitude	Longitude	DLS [°/100ft]	Comments
4657.00	2.520	245.620	4582.25	-343.47	-358.41	-564.61	40°06'08.410"N	104°41'44.896"W	1.08	
4742.00	1.000	228.730	4667.21	-344.67	-359.67	-566.87	40°06'08.398"N	104°41'44.925"W	1.87	
4827.00	1.130	236.270	4752.20	-345.60	-360.62	-568.12	40°06'08.388"N	104°41'44.941"W	0.22	
4998.00	1.160	191.900	4923.16	-348.18	-363.25	-569.88	40°06'08.362"N	104°41'44.964"W	0.51	
5168.00	2.050	237.740	5093.10	-351.41	-366.56	-572.81	40°06'08.330"N	104°41'45.001"W	0.88	
5338.00	1.570	248.510	5263.02	-353.76	-369.03	-577.55	40°06'08.305"N	104°41'45.062"W	0.34	
5507.00	0.910	344.520	5431.99	-353.25	-368.59	-580.06	40°06'08.309"N	104°41'45.095"W	1.12	
5678.00	0.470	281.740	5602.98	-351.77	-367.14	-581.11	40°06'08.324"N	104°41'45.108"W	0.47	
5848.00	0.730	267.320	5772.97	-351.63	-367.05	-582.87	40°06'08.325"N	104°41'45.131"W	0.18	
6018.00	0.380	282.630	5942.96	-351.52	-366.97	-584.50	40°06'08.325"N	104°41'45.152"W	0.22	
6187.00	0.430	320.300	6111.96	-350.88	-366.36	-585.46	40°06'08.331"N	104°41'45.164"W	0.16	
6357.00	0.590	274.030	6281.95	-350.30	-365.81	-586.74	40°06'08.337"N	104°41'45.181"W	0.25	
6526.00	0.830	258.400	6450.94	-350.43	-366.00	-588.80	40°06'08.335"N	104°41'45.207"W	0.18	
6694.00	1.130	270.560	6618.91	-350.58	-366.22	-591.65	40°06'08.333"N	104°41'45.244"W	0.22	
6779.00	1.380	258.290	6703.89	-350.73	-366.42	-593.49	40°06'08.331"N	104°41'45.268"W	0.43	
6822.00	2.620	317.770	6746.87	-350.08	-365.80	-594.66	40°06'08.337"N	104°41'45.283"W	5.25	
6864.00	6.350	337.680	6788.74	-347.18	-362.94	-596.19	40°06'08.365"N	104°41'45.302"W	9.49	
6907.00	9.310	338.070	6831.33	-341.69	-357.51	-598.39	40°06'08.419"N	104°41'45.331"W	6.88	
6950.00	12.860	342.790	6873.52	-333.83	-349.71	-601.11	40°06'08.496"N	104°41'45.366"W	8.51	
6992.00	17.240	344.280	6914.07	-323.29	-339.25	-604.18	40°06'08.599"N	104°41'45.405"W	10.47	
7035.00	20.930	344.450	6954.70	-309.66	-325.71	-607.96	40°06'08.733"N	104°41'45.454"W	8.58	
7077.00	24.770	344.270	6993.40	-293.84	-310.01	-612.36	40°06'08.888"N	104°41'45.510"W	9.14	
7120.00	28.060	347.360	7031.91	-275.18	-291.47	-617.02	40°06'09.072"N	104°41'45.570"W	8.29	
7163.00	32.200	349.690	7069.09	-253.93	-270.32	-621.28	40°06'09.281"N	104°41'45.625"W	10.00	
7205.00	35.940	350.040	7103.87	-230.67	-247.16	-625.42	40°06'09.509"N	104°41'45.678"W	8.92	
7248.00	40.240	351.280	7137.71	-204.40	-220.99	-629.71	40°06'09.768"N	104°41'45.734"W	10.16	
7291.00	44.230	351.460	7169.54	-175.72	-192.42	-634.05	40°06'10.050"N	104°41'45.790"W	9.28	
7333.00	49.750	351.280	7198.18	-145.26	-162.07	-638.65	40°06'10.350"N	104°41'45.849"W	13.15	
7376.00	54.450	352.260	7224.59	-111.57	-128.49	-643.50	40°06'10.682"N	104°41'45.911"W	11.08	
7418.00	59.490	353.670	7247.47	-76.53	-93.56	-647.80	40°06'11.027"N	104°41'45.967"W	12.33	
7461.00	63.890	355.750	7267.86	-38.77	-55.87	-651.27	40°06'11.400"N	104°41'46.011"W	11.08	
7504.00	69.650	356.920	7284.82	0.70	-16.46	-653.79	40°06'11.789"N	104°41'46.044"W	13.63	
7546.00	74.790	356.610	7297.64	40.66	23.46	-656.05	40°06'12.184"N	104°41'46.073"W	12.26	
7589.00	80.720	357.580	7306.75	82.65	65.41	-658.17	40°06'12.598"N	104°41'46.100"W	13.97	
7632.00	86.320	359.440	7311.60	125.36	108.10	-659.28	40°06'13.020"N	104°41'46.114"W	13.71	
7670.00	88.520	358.960	7313.31	163.31	146.06	-659.81	40°06'13.395"N	104°41'46.121"W	5.93	
7707.00†	89.772	359.571	7313.87	200.30	183.05	-660.28	40°06'13.761"N	104°41'46.127"W	3.76	7" CASING POINT
7730.00	90.550	359.950	7313.80	223.30	206.05	-660.38	40°06'13.988"N	104°41'46.129"W	3.76	
7815.00	89.900	0.550	7313.47	308.26	291.04	-660.01	40°06'14.828"N	104°41'46.124"W	1.04	
7900.00	90.770	0.850	7312.97	393.19	376.04	-658.97	40°06'15.668"N	104°41'46.110"W	1.08	
7985.00	89.660	1.060	7312.65	478.11	461.02	-657.55	40°06'16.508"N	104°41'46.092"W	1.33	
8070.00	89.160	1.170	7313.53	563.02	546.00	-655.90	40°06'17.348"N	104°41'46.071"W	0.60	
8155.00	89.720	1.580	7314.36	647.91	630.97	-653.86	40°06'18.187"N	104°41'46.045"W	0.82	
8239.00	90.610	1.210	7314.12	731.80	714.95	-651.82	40°06'19.017"N	104°41'46.018"W	1.15	
8324.00	89.690	1.220	7313.89	816.70	799.93	-650.01	40°06'19.857"N	104°41'45.995"W	1.08	

REFERENCE WELLPATH IDENTIFICATION

Operator	KERR-MCGEE OIL & GAS ONSHORE LP	Slot	SLOT#10 SUMMIT 4C-29HZ (395'FSL & 941'FWL, SEC.29)
Area	COLORADO	Well	SUMMIT 4C-29HZ
Field	WELD COUNTY (KERR MCGEE)	Wellbore	SUMMIT 4C-29HZ AWP
Facility	SEC.29-T2N-R65W		

WELLPATH DATA (139 stations)

MD [ft]	Inclination [°]	Azimuth [°]	TVD [ft]	Vert Sect [ft]	North [ft]	East [ft]	Latitude	Longitude	DLS [°/100ft]	Comments
8409.00	88.610	0.760	7315.15	901.61	884.90	-648.55	40°06'20.697"N	104°41'45.976"W	1.38	
8494.00	87.960	0.920	7317.70	986.50	969.85	-647.30	40°06'21.536"N	104°41'45.960"W	0.79	
8579.00	88.730	1.180	7320.15	1071.38	1054.80	-645.74	40°06'22.376"N	104°41'45.940"W	0.96	
8664.00	89.750	1.140	7321.28	1156.28	1139.78	-644.02	40°06'23.215"N	104°41'45.918"W	1.20	
8750.00	90.580	359.970	7321.03	1242.22	1225.77	-643.19	40°06'24.065"N	104°41'45.908"W	1.67	
8835.00	90.330	359.910	7320.36	1327.19	1310.77	-643.28	40°06'24.905"N	104°41'45.909"W	0.30	
8920.00	90.430	0.170	7319.79	1412.16	1395.77	-643.22	40°06'25.745"N	104°41'45.908"W	0.33	
9005.00	90.890	0.720	7318.81	1497.10	1480.76	-642.56	40°06'26.585"N	104°41'45.900"W	0.84	
9090.00	90.030	0.560	7318.13	1582.04	1565.75	-641.61	40°06'27.425"N	104°41'45.887"W	1.03	
9176.00	90.580	1.290	7317.67	1667.96	1651.74	-640.22	40°06'28.275"N	104°41'45.870"W	1.06	
9261.00	89.930	1.250	7317.30	1752.86	1736.71	-638.34	40°06'29.114"N	104°41'45.845"W	0.77	
9346.00	90.490	0.180	7316.98	1837.79	1821.70	-637.28	40°06'29.954"N	104°41'45.832"W	1.42	
9431.00	90.770	0.950	7316.05	1922.73	1906.69	-636.44	40°06'30.794"N	104°41'45.821"W	0.96	
9517.00	91.040	359.790	7314.69	2008.67	1992.68	-635.88	40°06'31.644"N	104°41'45.814"W	1.38	
9603.00	89.500	357.700	7314.29	2094.66	2078.65	-637.77	40°06'32.493"N	104°41'45.838"W	3.02	
9688.00	88.760	357.280	7315.58	2179.64	2163.56	-641.49	40°06'33.333"N	104°41'45.886"W	1.00	
9773.00	88.360	357.360	7317.71	2264.60	2248.44	-645.46	40°06'34.171"N	104°41'45.937"W	0.48	
9858.00	89.590	357.560	7319.23	2349.57	2333.34	-649.23	40°06'35.010"N	104°41'45.986"W	1.47	
9943.00	89.320	357.570	7320.04	2434.55	2418.26	-652.84	40°06'35.850"N	104°41'46.032"W	0.32	
10028.00	89.200	357.770	7321.14	2519.54	2503.18	-656.29	40°06'36.689"N	104°41'46.077"W	0.27	
10113.00	90.800	358.310	7321.14	2604.53	2588.13	-659.20	40°06'37.528"N	104°41'46.114"W	1.99	
10199.00	90.550	358.760	7320.13	2690.52	2674.10	-661.40	40°06'38.378"N	104°41'46.143"W	0.60	
10284.00	90.430	359.140	7319.40	2775.52	2759.08	-662.96	40°06'39.218"N	104°41'46.163"W	0.47	
10369.00	90.330	357.550	7318.84	2860.51	2844.04	-665.41	40°06'40.057"N	104°41'46.194"W	1.87	
10454.00	89.440	357.510	7319.01	2945.50	2928.96	-669.08	40°06'40.896"N	104°41'46.241"W	1.05	
10537.00	90.360	357.440	7319.15	3028.49	3011.88	-672.73	40°06'41.716"N	104°41'46.288"W	1.11	
10622.00	88.640	357.020	7319.89	3113.46	3096.77	-676.84	40°06'42.555"N	104°41'46.341"W	2.08	
10708.00	90.180	356.410	7320.78	3199.41	3182.62	-681.77	40°06'43.403"N	104°41'46.405"W	1.93	
10793.00	91.130	356.000	7319.81	3284.33	3267.43	-687.39	40°06'44.241"N	104°41'46.477"W	1.22	
10878.00	89.930	355.790	7319.02	3369.24	3352.21	-693.48	40°06'45.079"N	104°41'46.556"W	1.43	
10962.00	89.900	356.200	7319.15	3453.16	3436.00	-699.34	40°06'45.907"N	104°41'46.631"W	0.49	
11046.00	89.660	357.530	7319.47	3537.12	3519.87	-703.94	40°06'46.736"N	104°41'46.690"W	1.61	
11130.00	90.360	359.050	7319.45	3621.12	3603.83	-706.44	40°06'47.565"N	104°41'46.723"W	1.99	
11215.00	90.370	358.170	7318.91	3706.12	3688.80	-708.51	40°06'48.405"N	104°41'46.749"W	1.04	
11300.00	90.430	358.380	7318.32	3791.12	3773.76	-711.06	40°06'49.245"N	104°41'46.782"W	0.26	
11385.00	89.010	357.620	7318.73	3876.11	3858.71	-714.03	40°06'50.084"N	104°41'46.820"W	1.89	
11470.00	89.380	358.070	7319.93	3961.09	3943.64	-717.23	40°06'50.923"N	104°41'46.861"W	0.69	
11556.00	91.440	357.880	7319.31	4047.08	4029.58	-720.26	40°06'51.773"N	104°41'46.901"W	2.41	
11641.00	91.350	358.060	7317.24	4132.05	4114.50	-723.27	40°06'52.612"N	104°41'46.939"W	0.24	
11726.00	90.360	357.640	7315.98	4217.04	4199.43	-726.46	40°06'53.451"N	104°41'46.980"W	1.27	
11811.00	89.530	357.860	7316.06	4302.03	4284.36	-729.80	40°06'54.291"N	104°41'47.023"W	1.01	
11897.00	90.430	357.750	7316.09	4388.02	4370.30	-733.09	40°06'55.140"N	104°41'47.066"W	1.05	
11982.00	90.700	357.670	7315.25	4473.01	4455.23	-736.49	40°06'55.979"N	104°41'47.110"W	0.33	
12067.00	90.330	357.500	7314.48	4558.00	4540.15	-740.07	40°06'56.818"N	104°41'47.156"W	0.48	
12153.00	89.840	356.950	7314.36	4643.97	4626.05	-744.24	40°06'57.667"N	104°41'47.209"W	0.86	

Actual Wellpath Report

SUMMIT 4C-29HZ AWP

Page 5 of 7

REFERENCE WELLPATH IDENTIFICATION

Operator	KERR-MCGEE OIL & GAS ONSHORE LP	Slot	SLOT#10 SUMMIT 4C-29HZ (395'FSL & 941'FWL, SEC.29)
Area	COLORADO	Well	SUMMIT 4C-29HZ
Field	WELD COUNTY (KERR MCGEE)	Wellbore	SUMMIT 4C-29HZ AWB
Facility	SEC.29-T2N-R65W		

WELLPATH DATA (139 stations)

MD [ft]	Inclination [°]	Azimuth [°]	TVD [ft]	Vert Sect [ft]	North [ft]	East [ft]	Latitude	Longitude	DLS [°/100ft]	Comments
12238.00	89.870	357.250	7314.57	4728.95	4710.94	-748.54	40°06'58.506"N	104°41'47.265"W	0.35	
12323.00	89.160	357.490	7315.29	4813.93	4795.84	-752.44	40°06'59.345"N	104°41'47.315"W	0.88	
12338.00	88.980	357.290	7315.54	4828.92	4810.83	-753.12	40°06'59.493"N	104°41'47.324"W	1.79	LAST BHI MWD+IFR SURVEYS
12392.00	88.980	357.290	7316.50	4882.90	4864.76	-755.67	40°07'00.026"N	104°41'47.357"W	0.00	PROJECTION TO BIT

HOLE & CASING SECTIONS - Ref Wellbore: SUMMIT 4C-29HZ AWB Ref Wellpath: SUMMIT 4C-29HZ AWP

String/Diameter	Start MD [ft]	End MD [ft]	Interval [ft]	Start TVD [ft]	End TVD [ft]	Start N/S [ft]	Start E/W [ft]	End N/S [ft]	End E/W [ft]
13.5in Open Hole	16.00	1128.00	1112.00	16.00	1127.97	0.00	0.00	4.43	-0.89
9.625in Casing Surface	16.00	1118.00	1102.00	16.00	1117.98	0.00	0.00	4.27	-0.80
8.75in Open Hole	1128.00	7717.00	6589.00	1127.97	7313.88	4.43	-0.89	193.05	-660.34
7in Casing Intermediate	16.00	7707.00	7691.00	16.00	7313.87	0.00	0.00	183.05	-660.28
6.125in Open Hole	7717.00	12392.00	4675.00	7313.88	7316.50	193.05	-660.34	4864.76	-755.67

Actual Wellpath Report

SUMMIT 4C-29HZ AWP

Page 6 of 7

REFERENCE WELLPATH IDENTIFICATION

Operator	KERR-MCGEE OIL & GAS ONSHORE LP	Slot	SLOT#10 SUMMIT 4C-29HZ (395'FSL & 941'FWL, SEC.29)
Area	COLORADO	Well	SUMMIT 4C-29HZ
Field	WELD COUNTY (KERR MCGEE)	Wellbore	SUMMIT 4C-29HZ AWP
Facility	SEC.29-T2N-R65W		

TARGETS

Name	MD [ft]	TVD [ft]	North [ft]	East [ft]	Grid East [US ft]	Grid North [US ft]	Latitude	Longitude	Shape
SEC.29-T2N-R65W SECTION LINES		7118.00	0.41	399.80	3225918.18	1281513.05	40°06'11.956"N	104°41'32.485"W	polygon
SEC.32-T2N-R65W SECTION LINES		7118.00	0.41	399.80	3225918.18	1281513.05	40°06'11.956"N	104°41'32.485"W	polygon
SUMMIT 4C-29HZ LANDBOX		7317.00	0.00	0.03	3225518.45	1281509.01	40°06'11.952"N	104°41'37.630"W	polygon
SUMMIT 4C-29HZ BHL ON PLAT REV-1 (1'FNL & 410'FWL, SEC.29)		7317.00	4890.24	-571.96	3224902.05	1286393.64	40°07'00.278"N	104°41'44.992"W	point
SUMMIT 4C-29HZ BHL REV-2 (1'FNL & 257'FWL, SEC.29)		7317.00	4890.24	-725.00	3224749.02	1286392.25	40°07'00.278"N	104°41'46.962"W	point
SUMMIT 4C-29HZ BHL REV-3 (1'FNL & 260'FWL, SEC.29)		7317.00	4890.24	-721.96	3224752.06	1286392.28	40°07'00.278"N	104°41'46.923"W	point
SUMMIT 4C-29HZ LANDBOX		7317.00	-0.40	519.77	3226038.16	1281513.33	40°06'11.948"N	104°41'30.941"W	point
SEC.29-T2N-R65W HARDLINES (460'SETBACKS)		7343.00	0.00	-60.11	3225458.31	1281508.46	40°06'11.952"N	104°41'38.404"W	polygon
SEC.32-T2N-R65W HARDLINES (460'SETBACKS)		7343.00	0.41	399.80	3225918.18	1281513.05	40°06'11.956"N	104°41'32.485"W	polygon

WELLPATH COMPOSITION - Ref Wellbore: SUMMIT 4C-29HZ AWP Ref Wellpath: SUMMIT 4C-29HZ AWP

Start MD [ft]	End MD [ft]	Positional Uncertainty Model	Log Name/Comment	Wellbore
16.00	1081.00	ISCWSA MWD, Rev. 2 (Standard)	CATHEDRAL ENERGY MWD SURVEYS 13.5" <60-1081>	SUMMIT 4C-29HZ AWP
1081.00	7670.00	NaviTrak (MAGCORR,IFR)	BHI MWD+IFR SURVEYS 8.75" <1157-7670>	SUMMIT 4C-29HZ AWP
7670.00	12338.00	NaviTrak (MAGCORR,IFR)	BHI MWD+IFR SURVEYS 6.125" <7730-12338>	SUMMIT 4C-29HZ AWP
12338.00	12392.00	Blind Drilling (std)	Projection to bit	SUMMIT 4C-29HZ AWP

Actual Wellpath Report

SUMMIT 4C-29HZ AWP

Page 7 of 7

REFERENCE WELLPATH IDENTIFICATION

Operator	KERR-MCGEE OIL & GAS ONSHORE LP	Slot	SLOT#10 SUMMIT 4C-29HZ (395'FSL & 941'FWL, SEC.29)
Area	COLORADO	Well	SUMMIT 4C-29HZ
Field	WELD COUNTY (KERR MCGEE)	Wellbore	SUMMIT 4C-29HZ AWB
Facility	SEC.29-T2N-R65W		

WELLPATH COMMENTS

MD [ft]	Inclination [°]	Azimuth [°]	TVD [ft]	Comment
60.00	0.100	55.500	60.00	BEGIN MWD SURVEYS
1081.00	1.000	334.400	1080.98	TIE-INTO MWD SURVEYS
1157.00	1.090	328.590	1156.97	BEGIN BHI MWD+IFR SURVEYS
7707.00	89.772	359.571	7313.87	7" CASING POINT
12338.00	88.980	357.290	7315.54	LAST BHI MWD+IFR SURVEYS
12392.00	88.980	357.290	7316.50	PROJECTION TO BIT