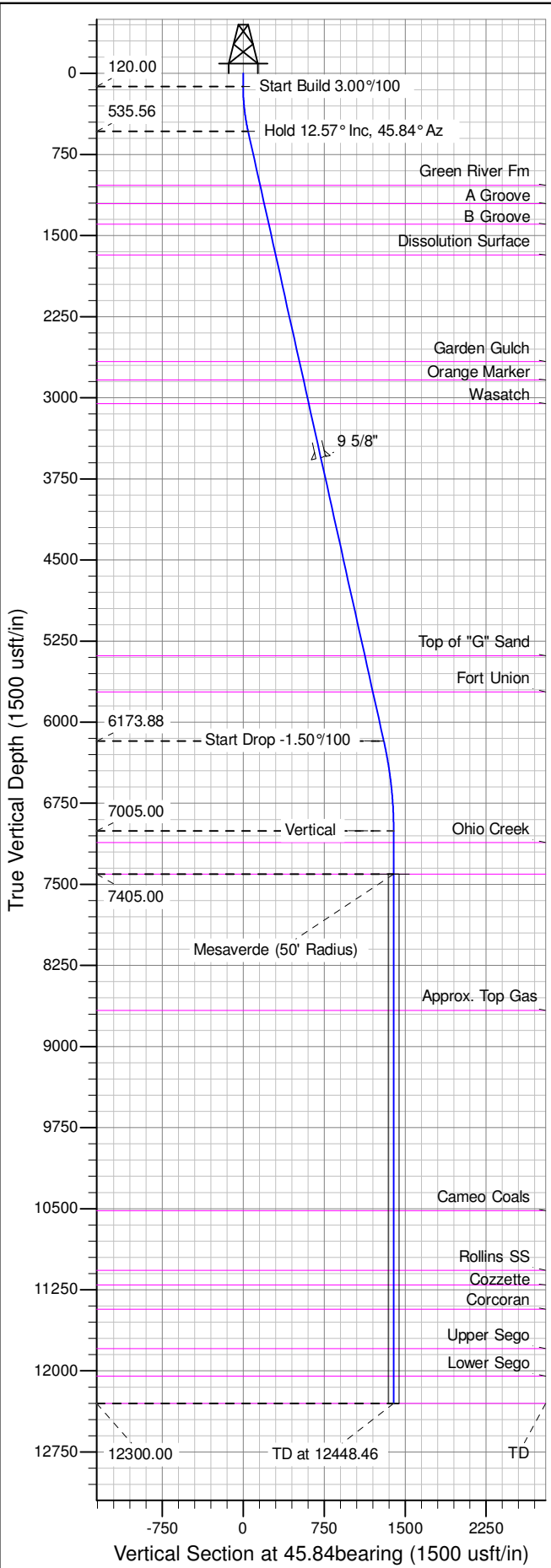
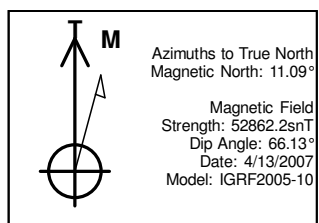
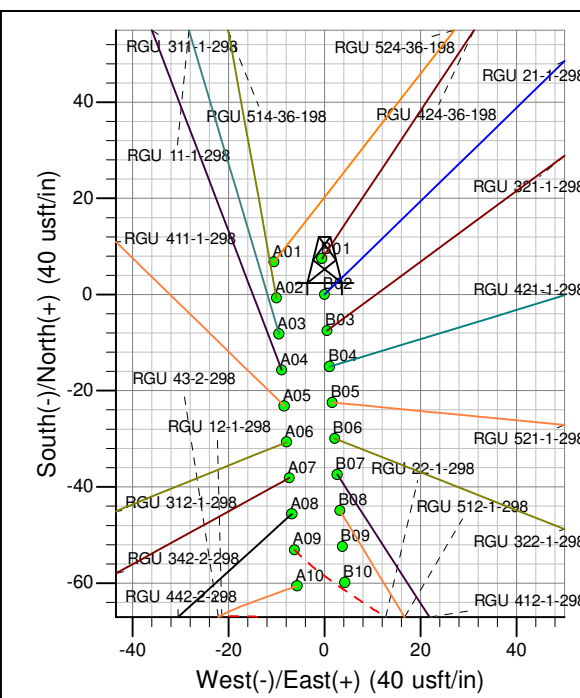
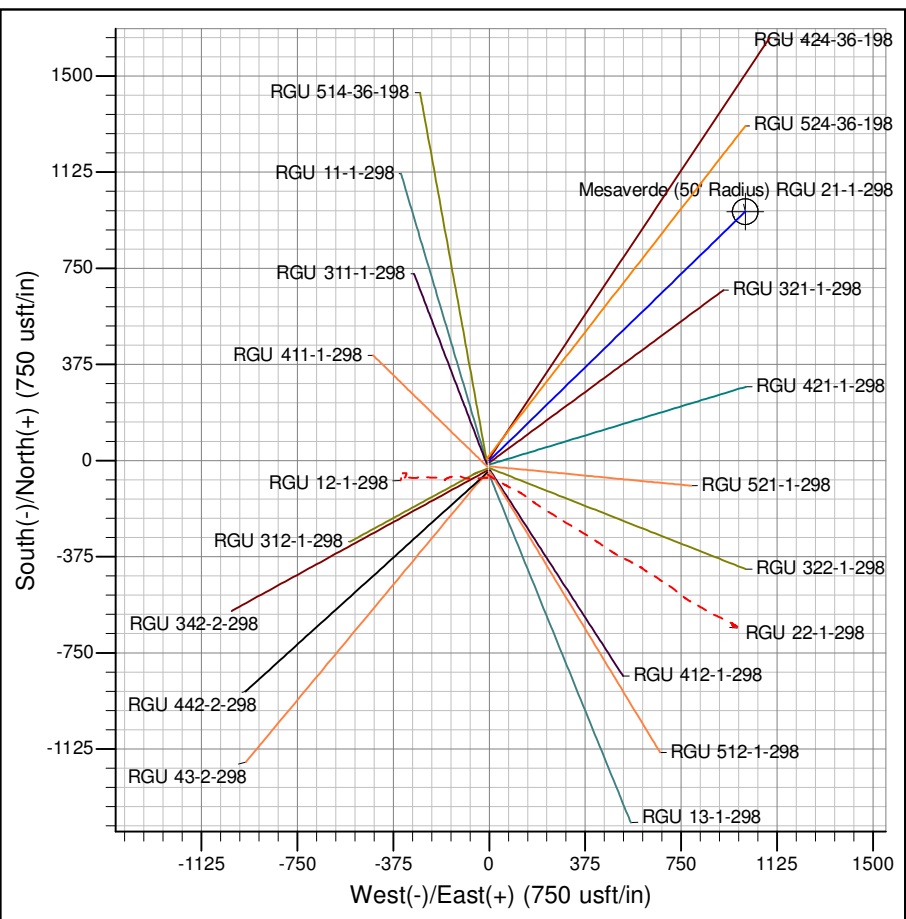




Well Name: RGU 21-1-298
Surface Location: RGU 12-1-298 Pad
North American Datum 1983 , US State Plane 1983 , Colorado Central Zone
Ground Elevation: 6624.00
+N/-S +E/-W Northing Easting Latitude Longitude Slot
0.00 0.00 1768509.50 2201157.10 39.908997 -108.347940 B02
KELLY BUSHING @ 6645.00usft (Cyclone 29 (21'KB) mab)



ANNOTATIONS									
TVD	MD	Inc	Azi	+N/-S	+E/-W	Vsect	Departure	Annotation	
120.00	120.00	0.00	0.00	0.00	0.00	0.00	0.00	Start Build 3.00°/100	
535.56	538.91	12.57	45.84	31.88	32.83	45.76	45.76	Hold 12.57° Inc, 45.84° Az	
6173.88	6315.63	12.57	45.84	907.54	934.56	1302.70	1302.70	Start Drop -1.50°/100	
7005.00	7153.46	0.00	0.00	971.29	1000.21	1394.21	1394.21	Vertical	
7405.00	7553.46	0.00	0.00	971.29	1000.21	1394.21	1394.21	Mesaverde	
12300.00	12448.46	0.00	0.00	971.29	1000.21	1394.21	1394.21	TD at 12448.46	



Azimuths to True North
Magnetic North: 11.09°
Magnetic Field
Strength: 52862.2snT
Dip Angle: 66.13°
Date: 4/13/2007
Model: IGRF2005-10
Project: RG 01-02S-098W
Site: RGU 12-1-298 Pad
Well: RGU 21-1-298
Design #2 23Sep14 mab