

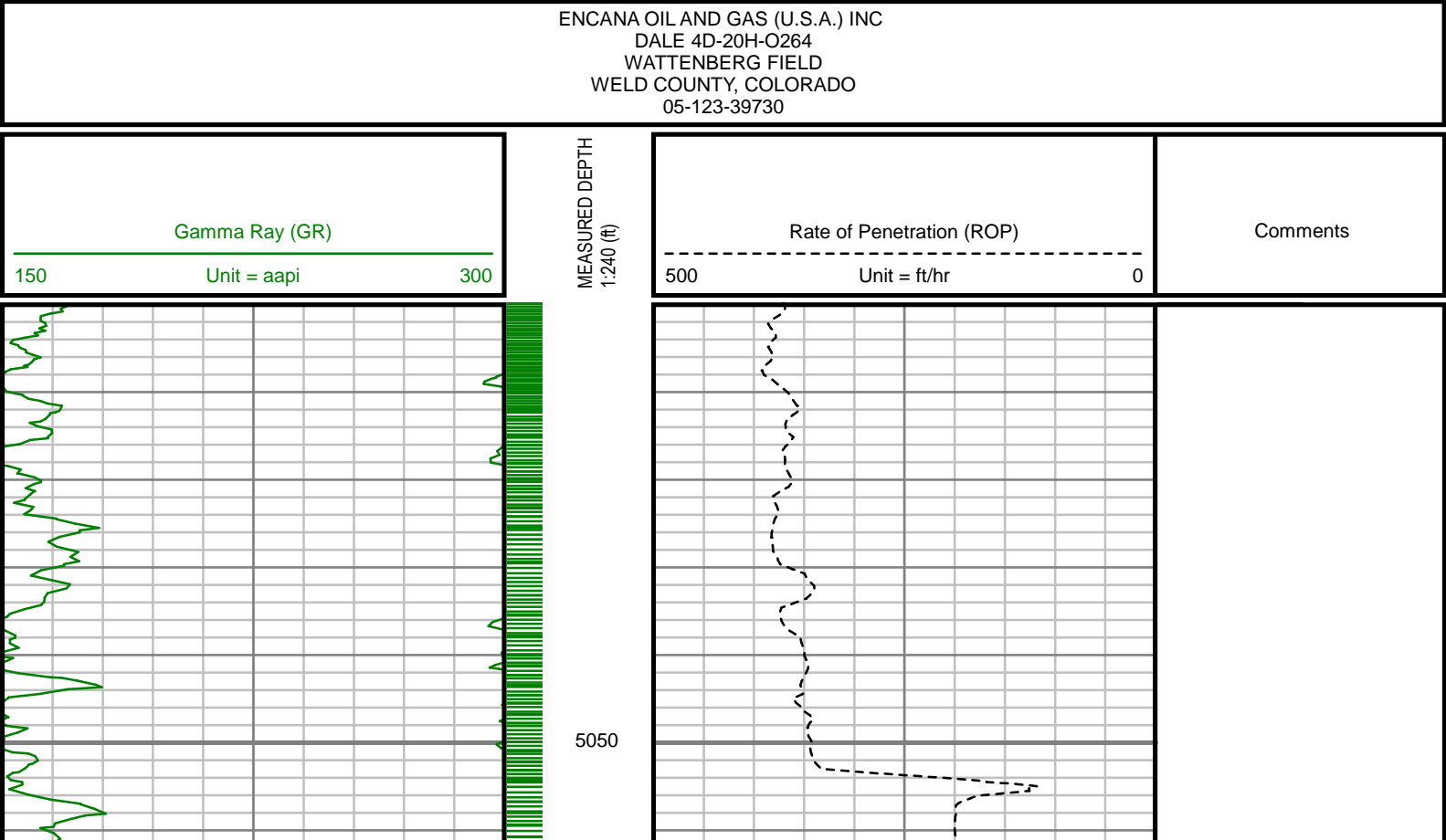
5" = 100' FEET MD

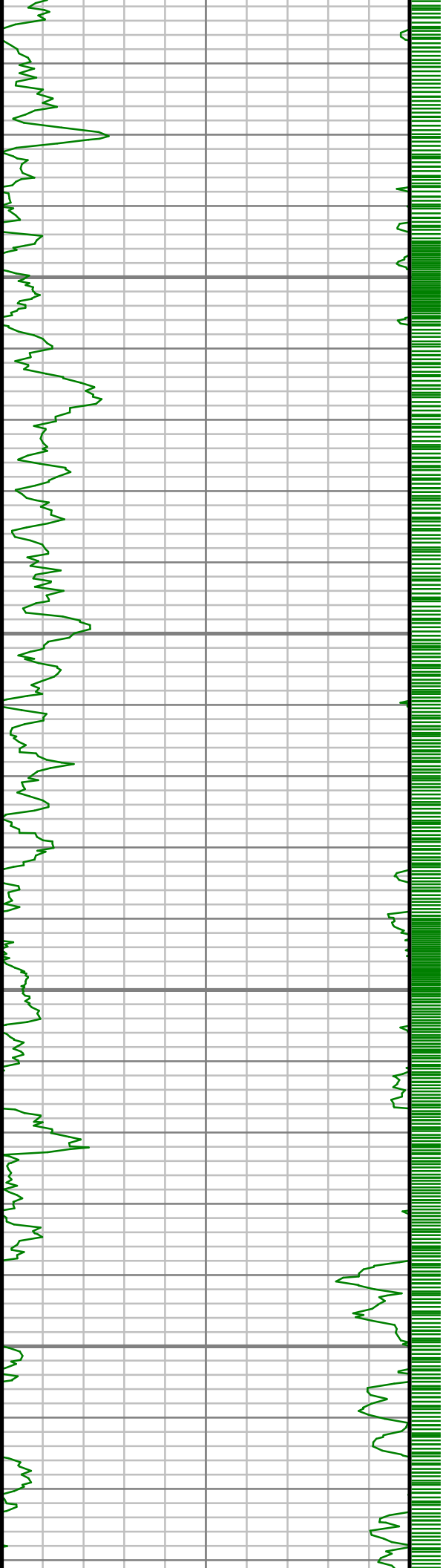
COMPANY : ENCANA OIL & GAS (U.S.A.) INC WELL : DALE 4D-20H-0264 FIELD : WATTENBERG COUNTY : WELD STATE : COLORADO COUNTRY : U.S.A. UWI : 05-123-39730										COMPANY : ENCANA OIL & GAS (U.S.A.) INC WELL : DALE 4D-20H-0264 FIELD : WATTENBERG COUNTY : WELD STATE : COLORADO COUNTRY : U.S.A. UWI : 05-123-39730									
DEPTH REF. : RKB REF. HEIGHT : 25.000 ft GROUND LEVEL : 4957.000 ft										RKB to Ground Level G.L. to MEAN SEA LEVEL									
BOREHOLE RECORD										DEVIATION RECORD									
HOLE SIZE in	FROM ft	TO ft	INCLINATION deg							FROM ft	TO ft								
12.25	0	1087	0 - 4							0	1087								
8.75	1087	7352	4 - 11							1087	2619								
6.125	7352	11626	11 - 0							2619	6484								
			0 - 83							6484	7352								
			83 - 92							7352	11626								
CASING RECORD																			
CASING SIZE in	FROM ft	TO ft																	
16	0	118																	
9.625	0	1072																	
7	0	7337																	
DRILLING CO. : H&P RIG : 278 LMD UNIT NO. : MWD-00046-DISTRICT : CASPER, CASPER SPUD DATE : 08/22/2014 LMD START DATE : 10/24/2014 LMD END DATE : 11/01/2014										DEPTH : 5000 ft DEPTH : 11626 ft TOTAL DEPTH : 11626 ft									

Run Data						
RUN NUMBER	1	2	3			
START DATE	08/22/2014	10/24/2014	10/28/2014			
START TIME	1420	0900	2230			
END DATE	08/22/2014	10/26/2014	11/01/2014			
END TIME	2130	0140	0645			
DEPTH IN (ft)	140	1087	7352			
DEPTH OUT (ft)	1087	7352	11626			
LOG TOP (ft)	-	5000	7299			
LOG BOTTOM (ft)	-	7299	11626			
HOLE SIZE (in)	12.25	8.75	6.125			
MUD DATA @ (ft)	1087	7352	11626			
MUD TYPE	WATER-BASED	WATER-BASED	WATER-BASED			
DENSITY (lb / gal)	8.5	10.7	11.1			
VISCOSITY (s / qt)	26	12	38			
pH	-	7.9	8.9			
FLUID LOSS (cm3 / 30)	-	-	-			
SALINITY (ppm)	-	-	-			
Rm (ohmm @ deg F)	-	-	-			
Rmf (ohmm @ deg F)	-	-	-			
MAX TEMP (deg F)	97	169	222			
Rm @ MAX TEMP (ohmm)	-	-	-			
LWD ENGINEER #1	S. WAXLER	S. WAXLER	S. WAXLER			
LWD ENGINEER #2	C. WILSON	T. LE	T. LE			
LWD ENGINEER #3	T. LE	-	C. WILSON			
LOG WTINNESS #1	-	M. ALMUBARAK	M. ALMUBARAK			
LOG WTINNESS #2	-	C. PESICKA	C. PESICKA			

Remarks
ENCANA OIL & GAS (U.S.A.) INC PRODUCTION AFE# 14182129
SCIENTIFIC DRILLING INTERNATIONAL JOB# 186387, 213454
ALL REFERENCES IN THE DEPTH TRACK ARE AT BIT DEPTH.
ALL DATA IS MEMORY DATA UNLESS STATED OTHERWISE.
FLAT AVERAGE FILTER OF 1.00 FT APPLIED TO GAMMA RAY CURVE
FLAT AVERAGE FILTER OF 1.00 FT APPLIED TO RATE OF PENETRATION CURVE
RUN #1: GYRO / MWD / DIRECTIONAL RUN
SENSORS S/N: EM5 = 890 / MWD EYE = 809 / GYRO = 034
BIT TO SENSOR OFFSETS: SURVEY = 54.92 FT. / GYRO = 44.64 FT.
RUN #2: MWD / GAMMA RAY LOGGING RUN
SENSORS S/N: PULSER = 128-333 / CONT = 126 / MWD EYE = 0213 / GAMMA RAY = 1271
BIT TO SENSOR OFFSETS: SURVEY = 63.03 FT. / GAMMA RAY = 54.37 FT.
RUN #3: MWD / GAMMA RAY LOGGING RUN
SENSORS S/N: PULSER = 78-197 / CONT = 858 / MWD EYE = 522 / GAMMA RAY = 1076
BIT TO SENSOR OFFSETS: SURVEY = 61.54 FT. / GAMMA RAY = 52.88 FT.
REMARK #1: GAMMA RAY FROM 7299 FT. - 7337 FT. WAS LOGGED BEHIND CASING.
MNEMONICS LIST:
GR = GAMMA RAY
ROP = RATE OF PENETRATION

All interpretations are opinions based on inferences from electrical or other measurements and we cannot, and do not guarantee the accuracy or correctness of any interpretations, and we shall not, except in the case of gross or willful negligence on our part, be liable or responsible for any loss, costs, damages or expenses incurred or sustained by anyone resulting from any interpretation made by any of our officers, agents or employees. These interpretations are also subject to our general terms and conditions as set out in our current price schedule.



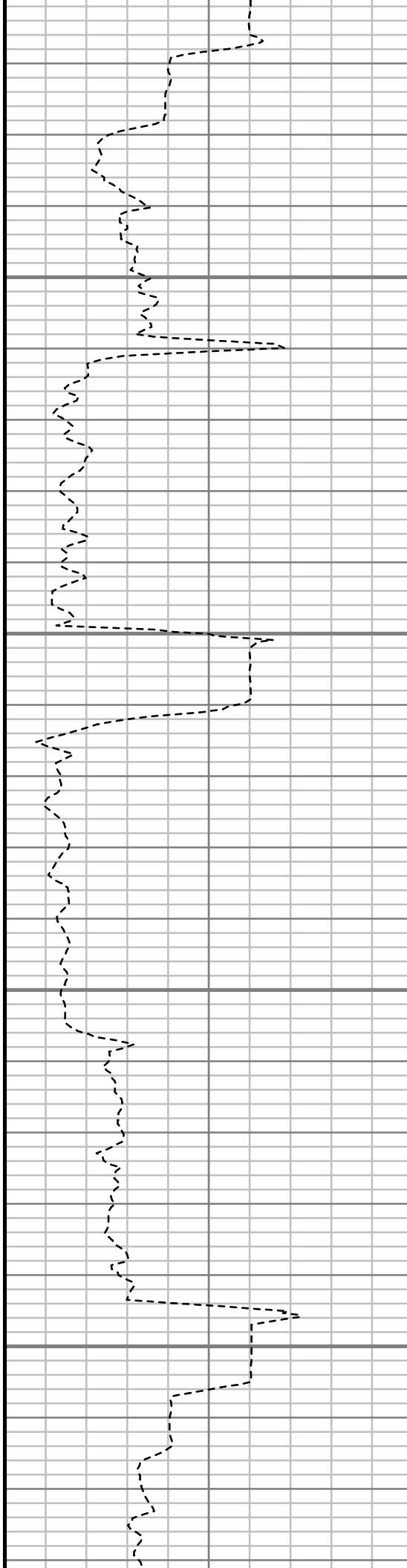


5100

5150

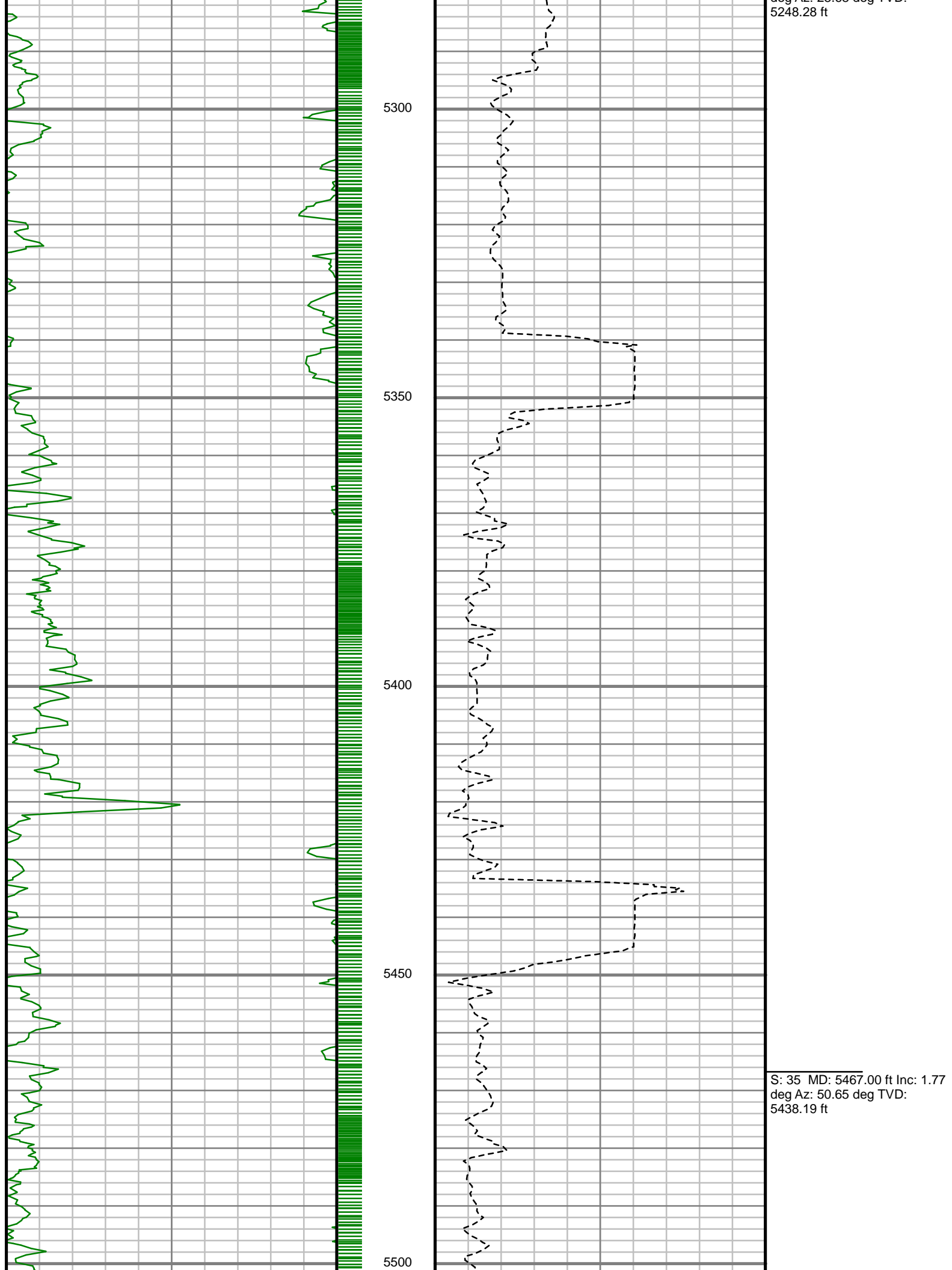
5200

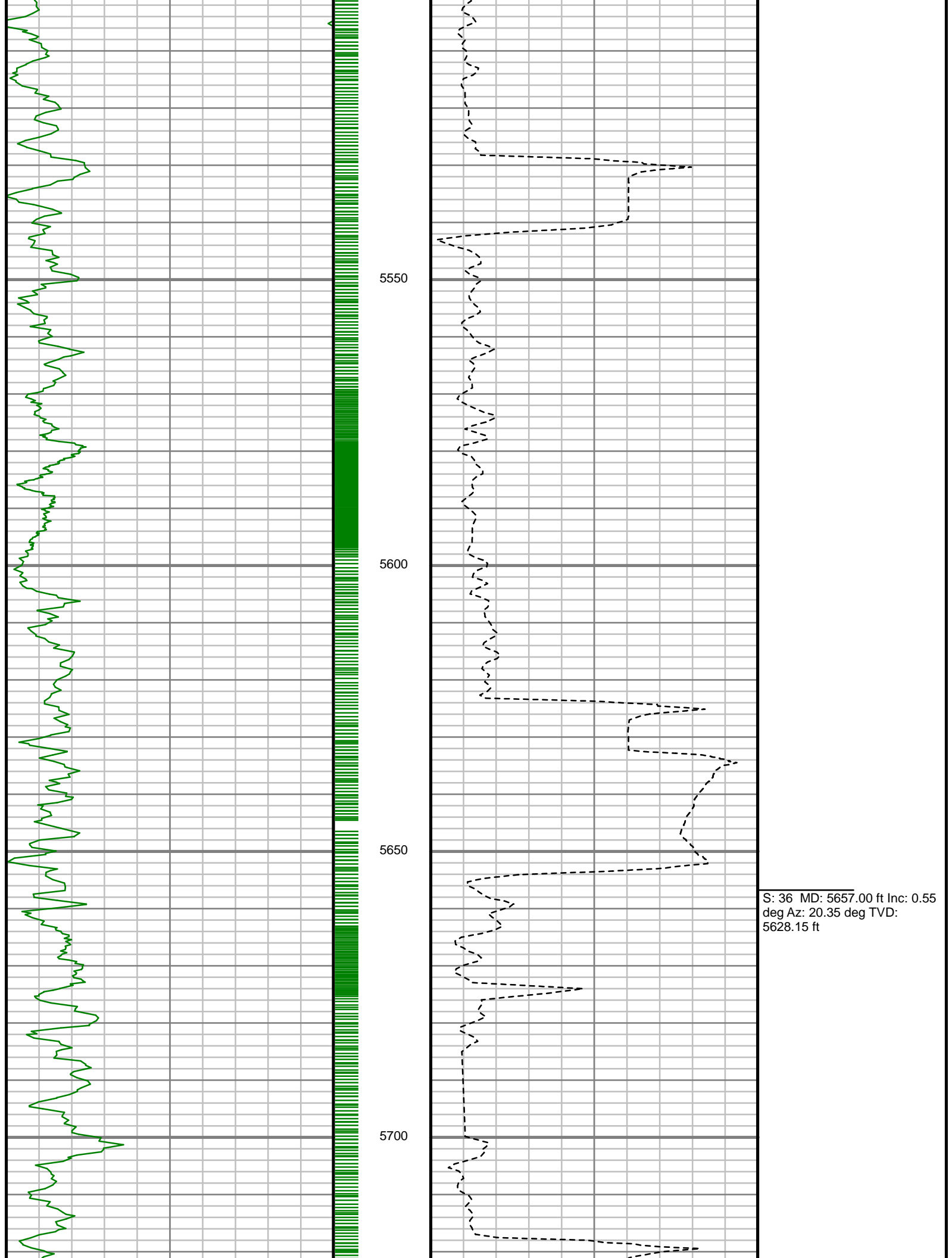
5250

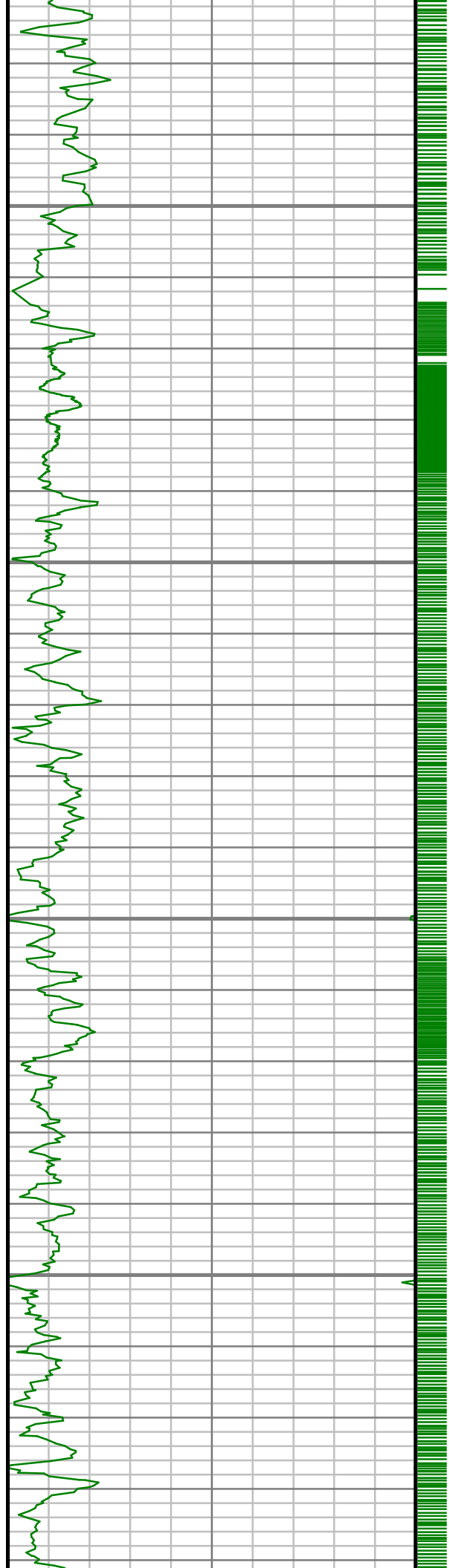


S: 33 MD: 5086.00 ft Inc: 1.33
deg Az: 100.05 deg TVD:
5057.33 ft

S: 34 MD: 5277.00 ft Inc: 1.65
deg Az: 28.68 deg TVD:





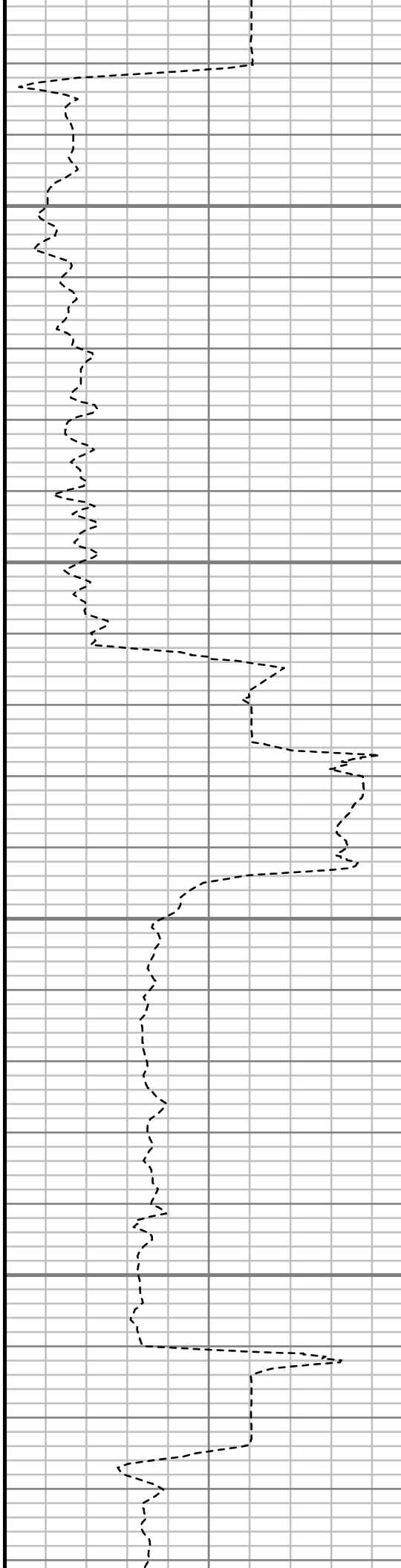


5750

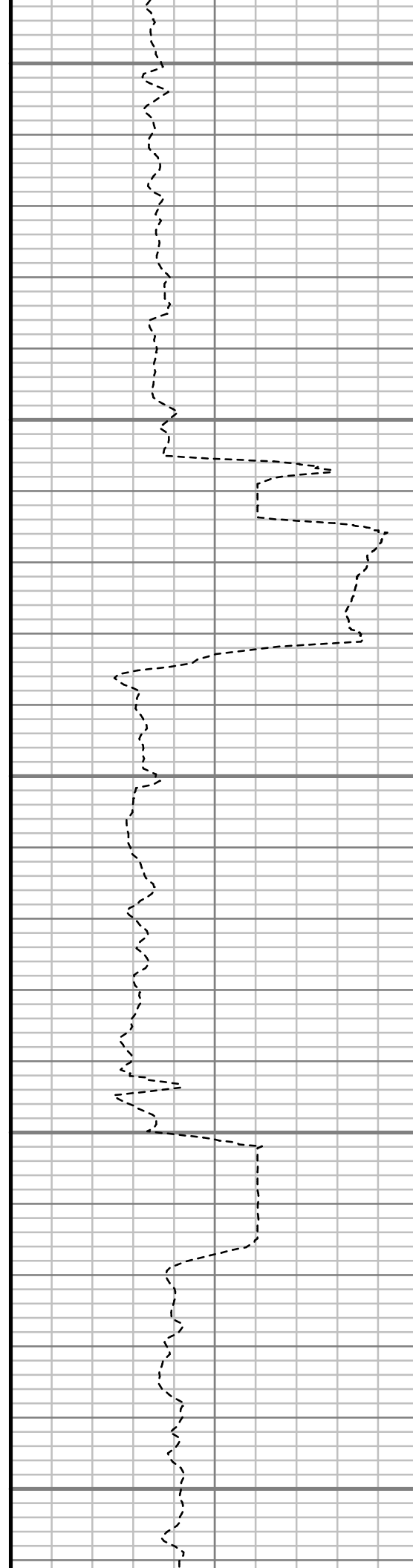
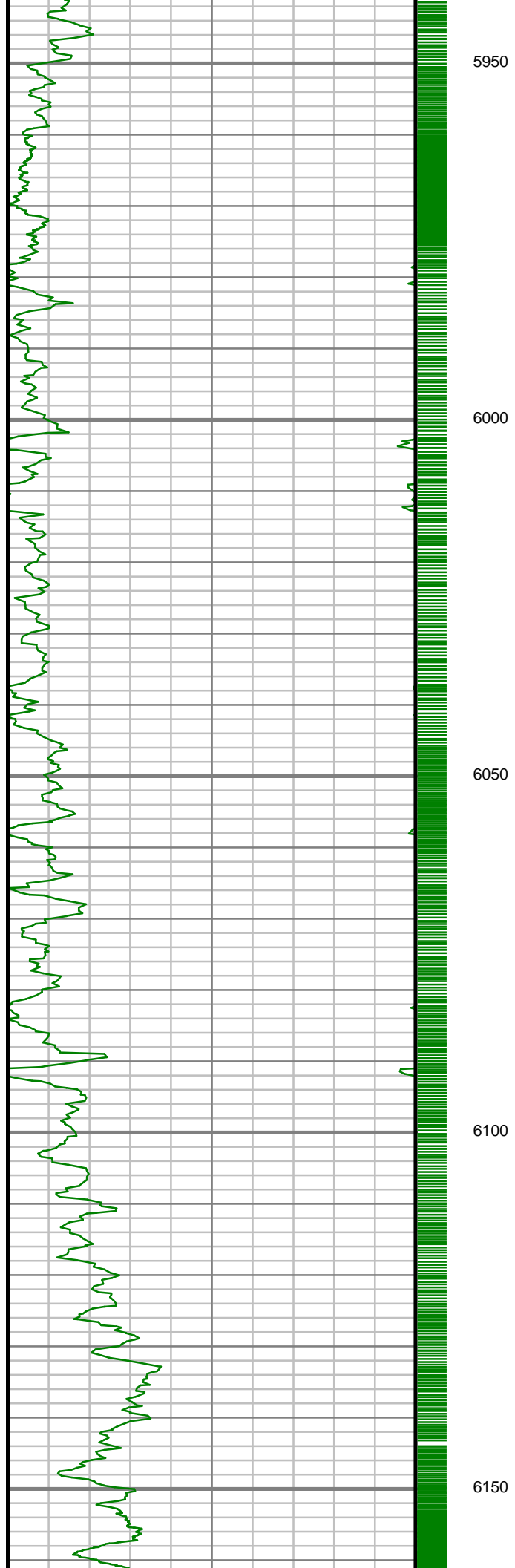
5800

5850

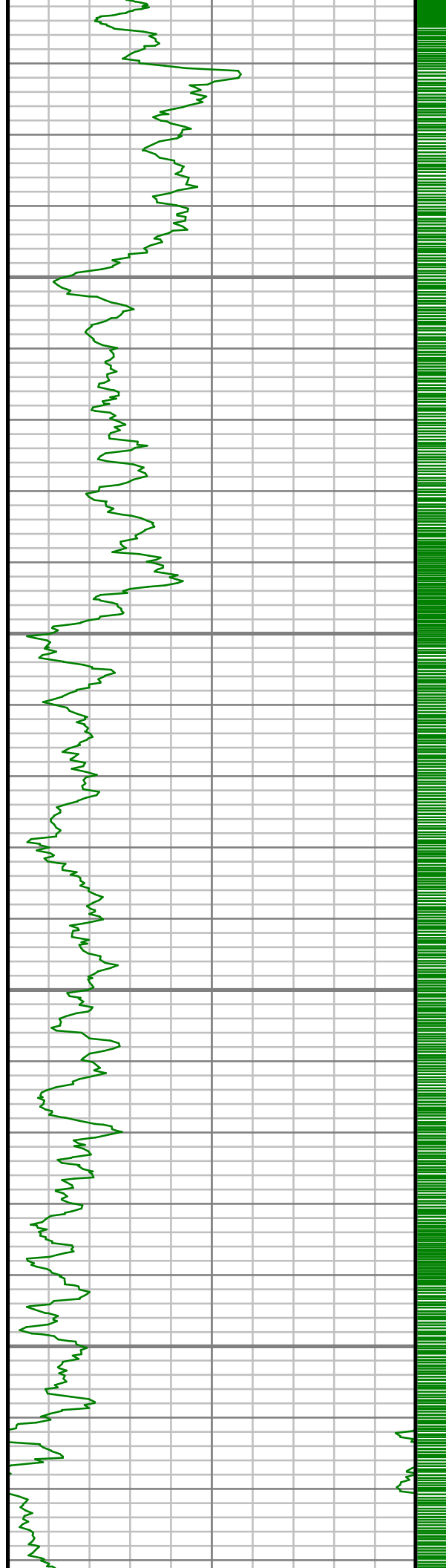
5900



S: 37 MD: 5847.00 ft Inc: 2.02
deg Az: 119.27 deg TVD:
5818.11 ft



S: 38 MD: 6038.00 ft Inc: 2.72
deg Az: 135.19 deg TVD:
6008.95 ft

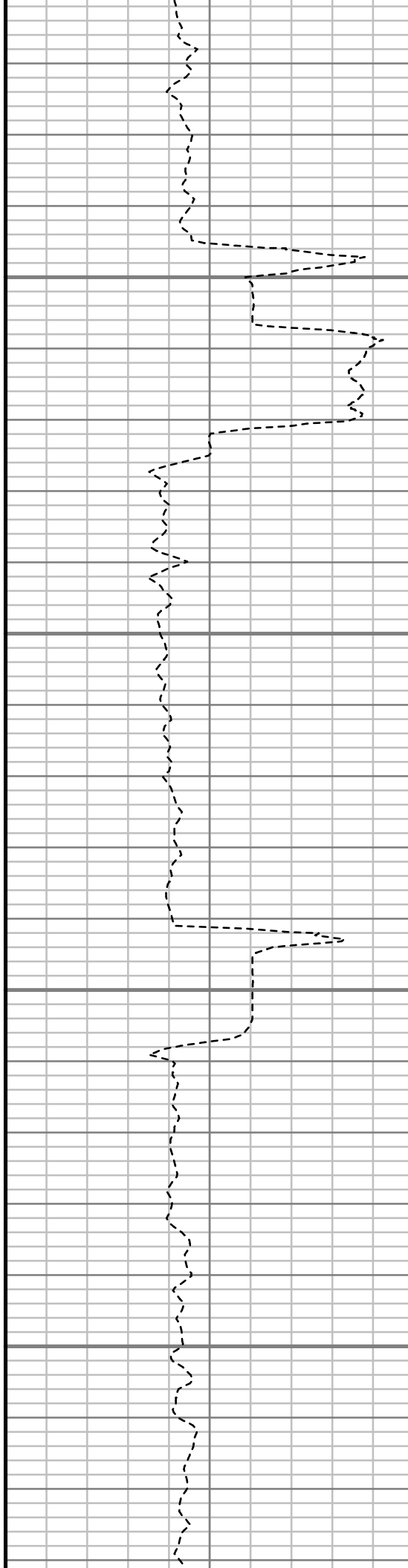


6200

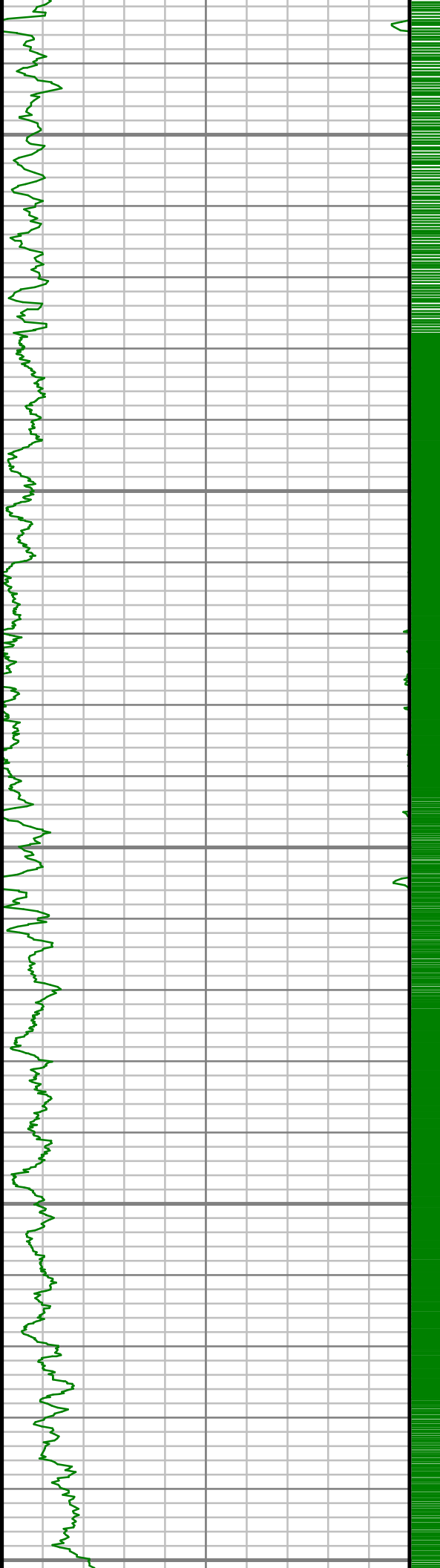
6250

6300

6350



S: 39 MD: 6228.00 ft Inc: 1.19
deg Az: 159.55 deg TVD:
6198.83 ft



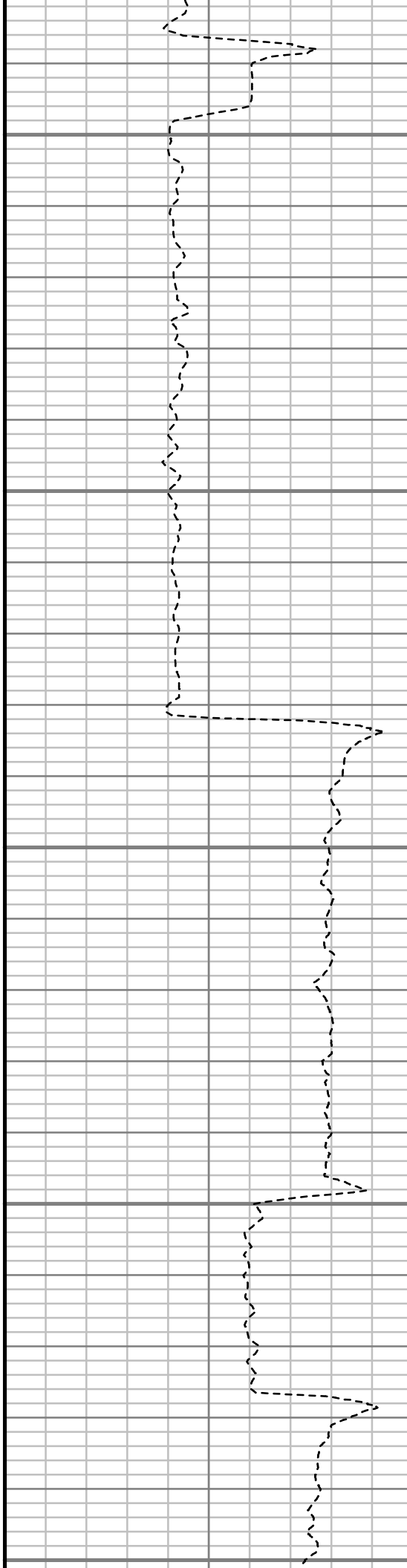
6400

6450

6500

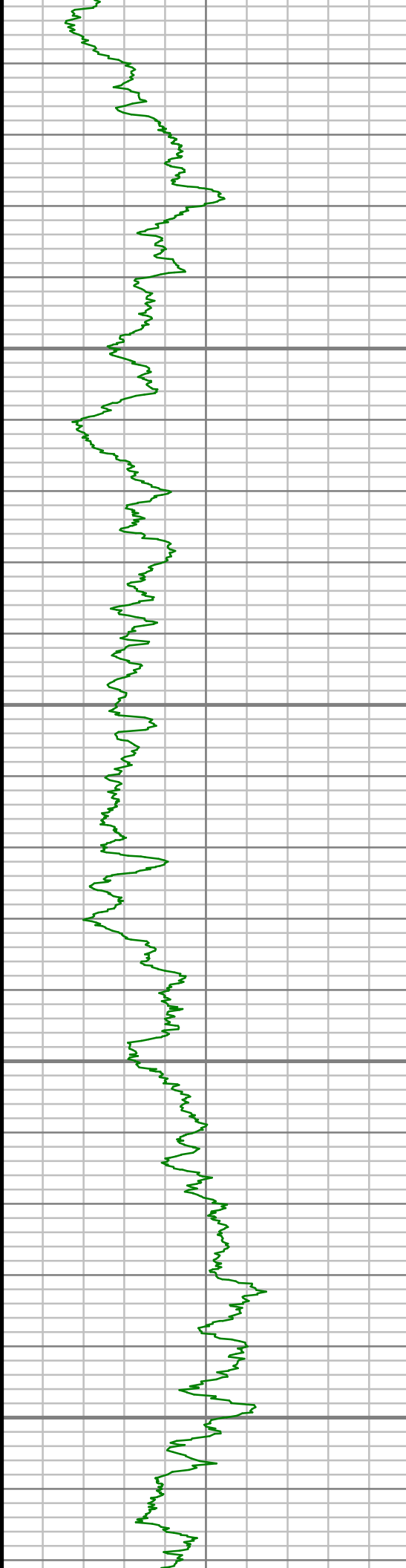
6550

6600



S: 40 MD: 6419.00 ft Inc: 1.44
deg Az: 84.23 deg TVD:
6389.80 ft

S: 41 MD: 6514.00 ft Inc: 3.91
deg Az: 353.12 deg TVD:
6484.71 ft

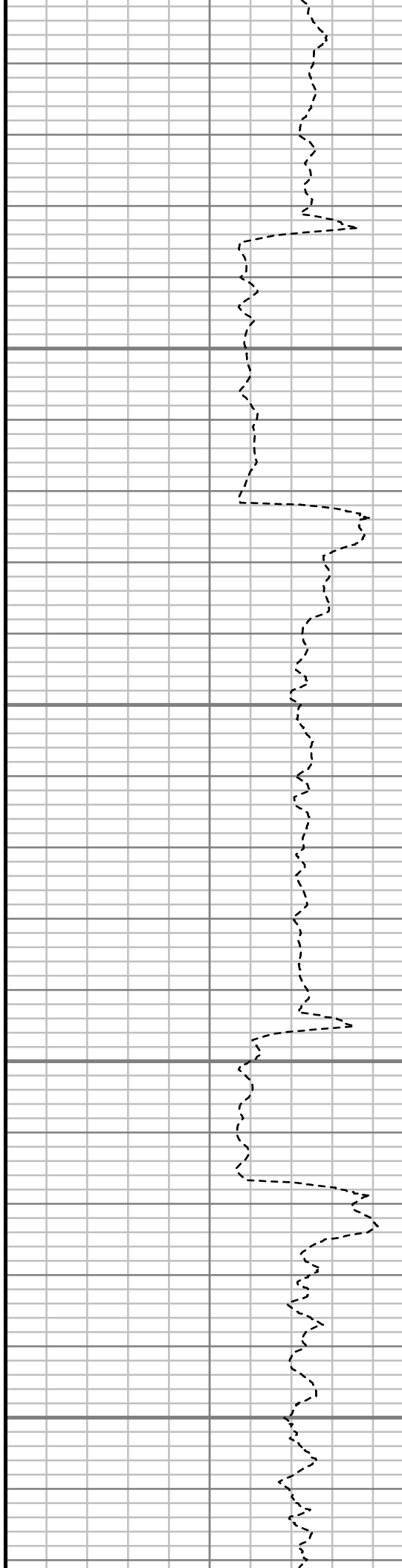


6650

6700

6750

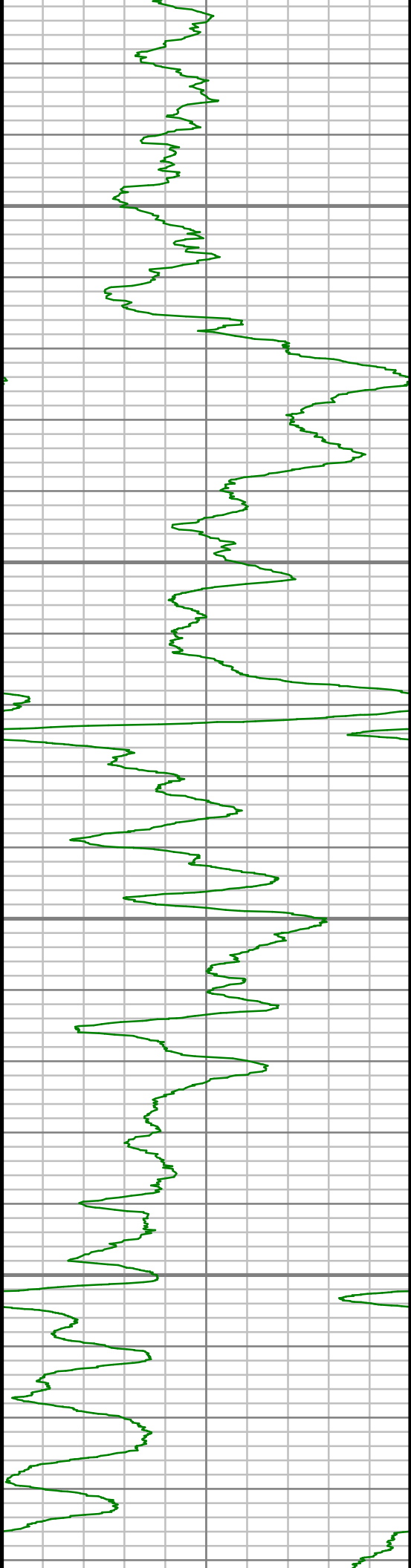
6800



S: 42 MD: 6609.00 ft Inc: 13.00
deg Az: 347.38 deg TVD:
6578.58 ft

S: 43 MD: 6704.00 ft Inc: 17.73
deg Az: 346.96 deg TVD:
6670.16 ft

S: 44 MD: 6799.00 ft Inc: 25.15
deg Az: 349.19 deg TVD:
6758.53 ft

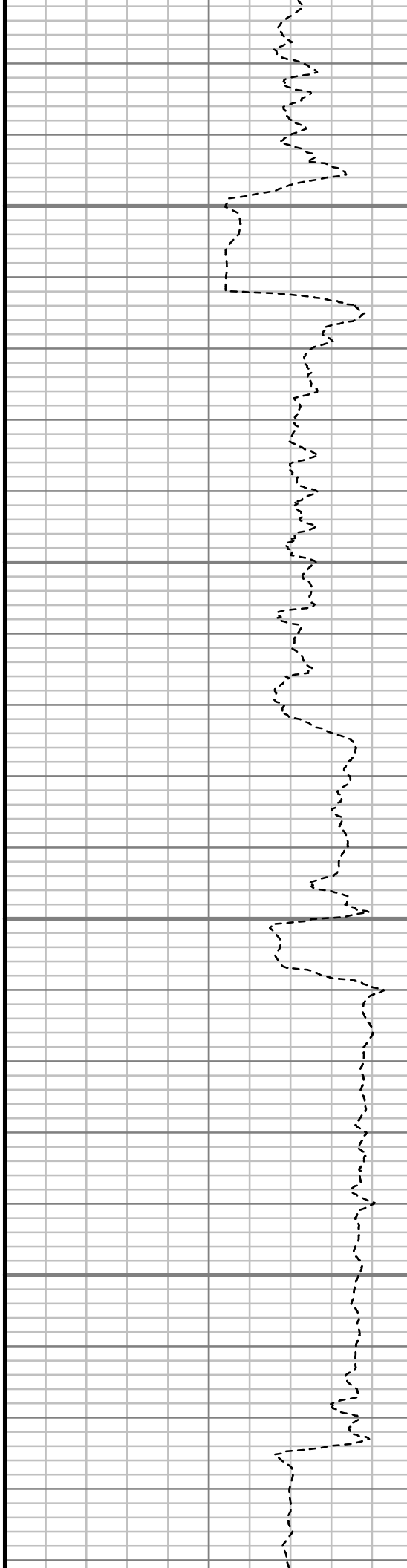


6850

6900

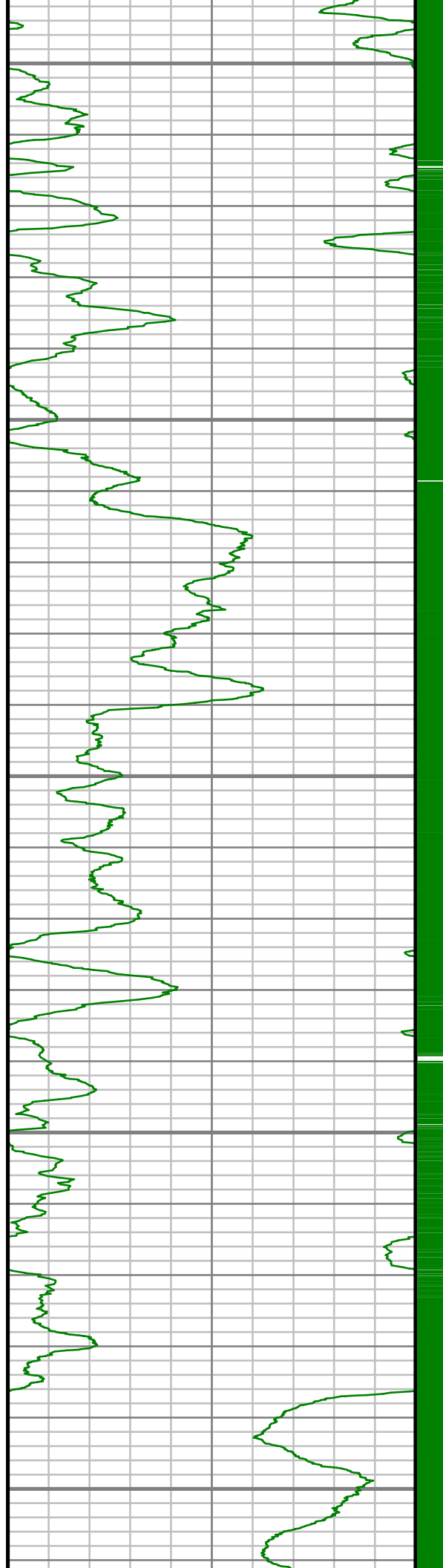
6950

7000



S: 45 MD: 6894.00 ft Inc: 37.30
deg Az: 351.20 deg TVD:
6839.62 ft

S: 46 MD: 6990.00 ft Inc: 52.20
deg Az: 352.97 deg TVD:
6907.61 ft



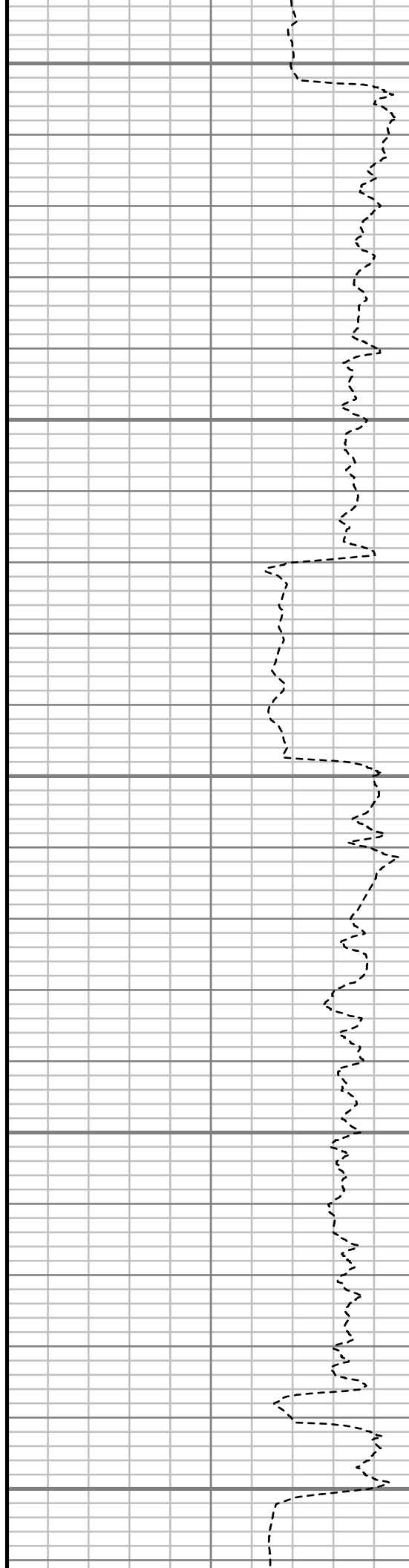
7050

7100

7150

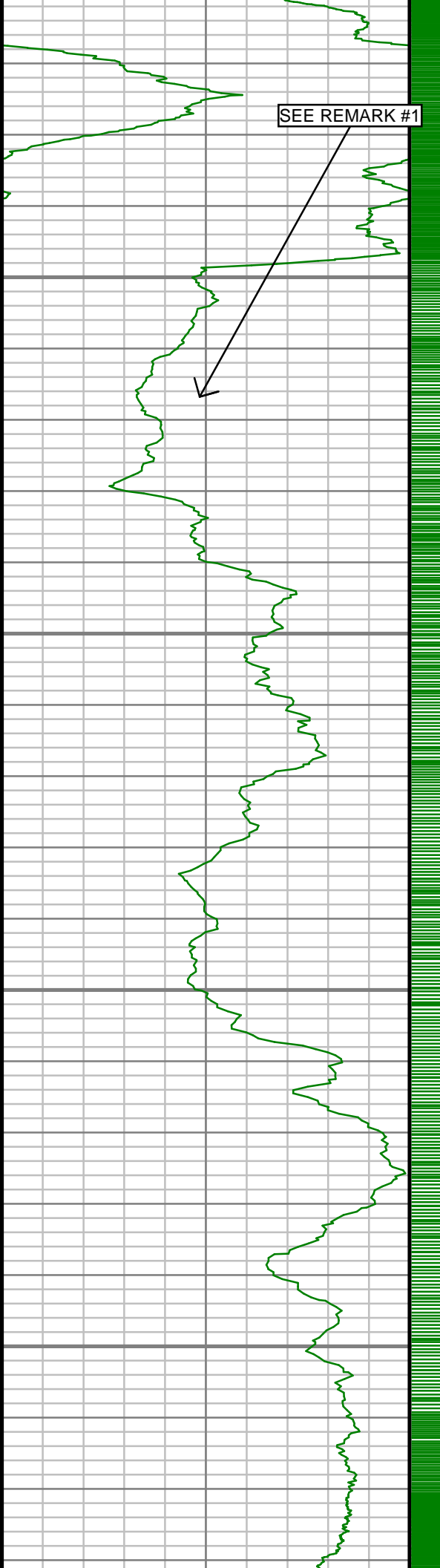
7200

7250



S: 47 MD: 7085.00 ft Inc: 61.57
deg Az: 356.45 deg TVD:
6959.47 ft

S: 48 MD: 7179.00 ft Inc: 72.51
deg Az: 358.21 deg TVD:
6996.09 ft



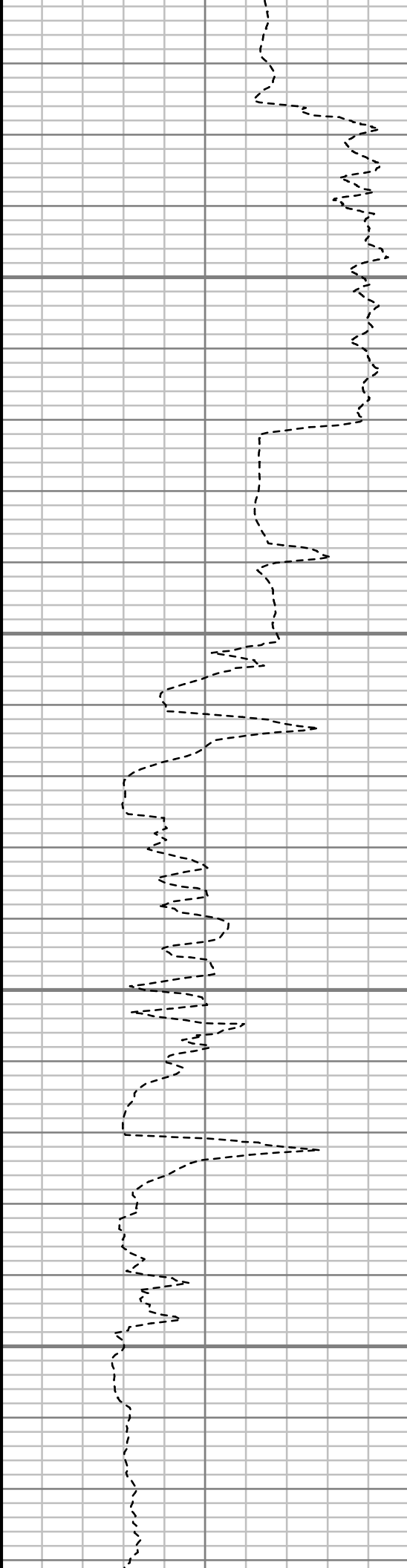
SEE REMARK #1

7300

7350

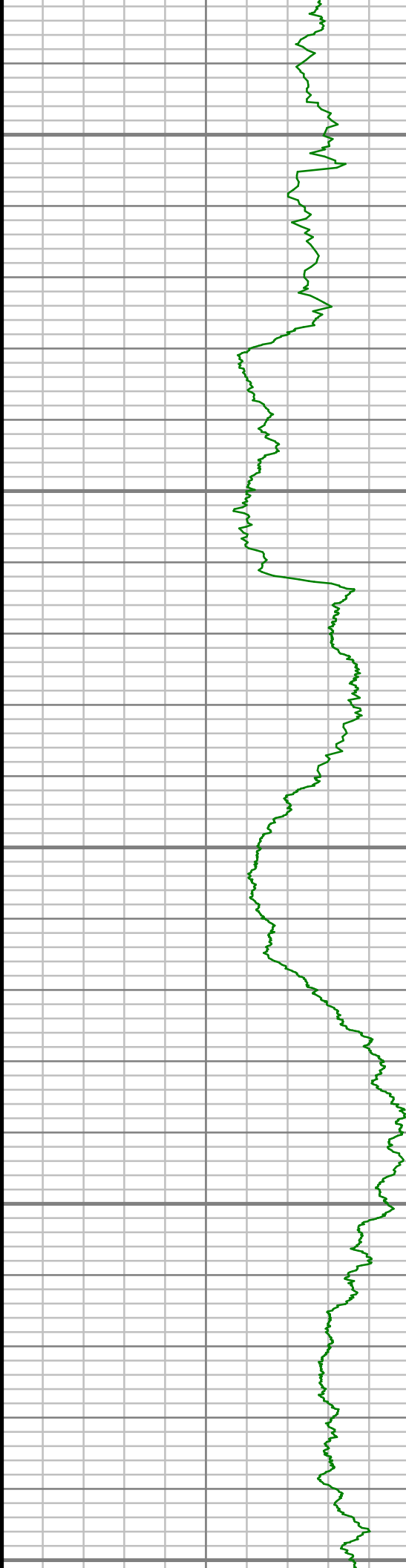
7400

7450



S: 49 MD: 7274.00 ft Inc: 82.82
deg Az: 357.10 deg TVD:
7016.36 ft

S: 50 MD: 7452.00 ft Inc: 89.43
deg Az: 357.44 deg TVD:
7028.37 ft



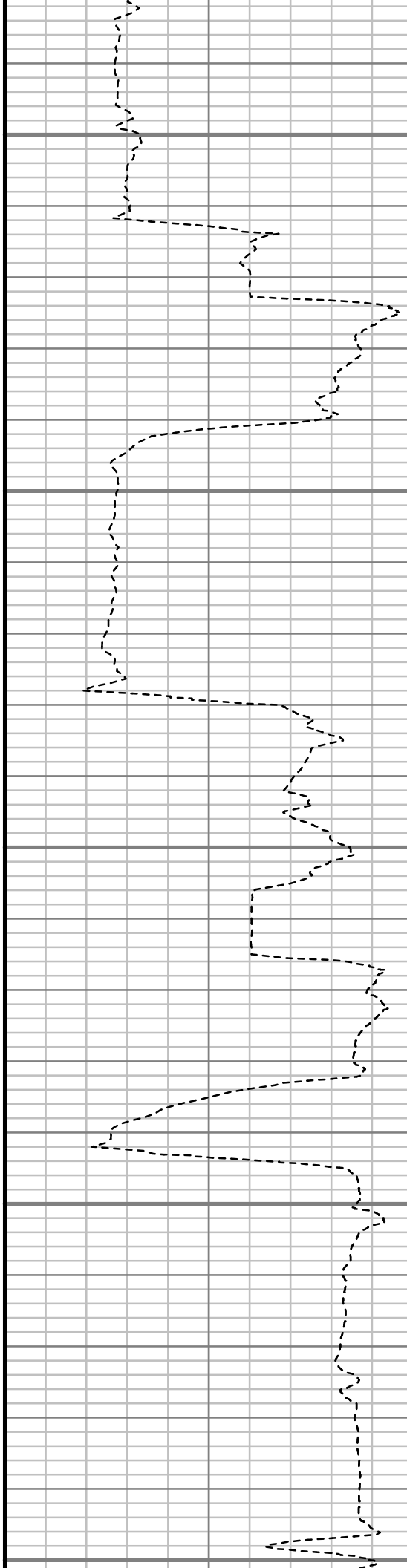
7500

7550

7600

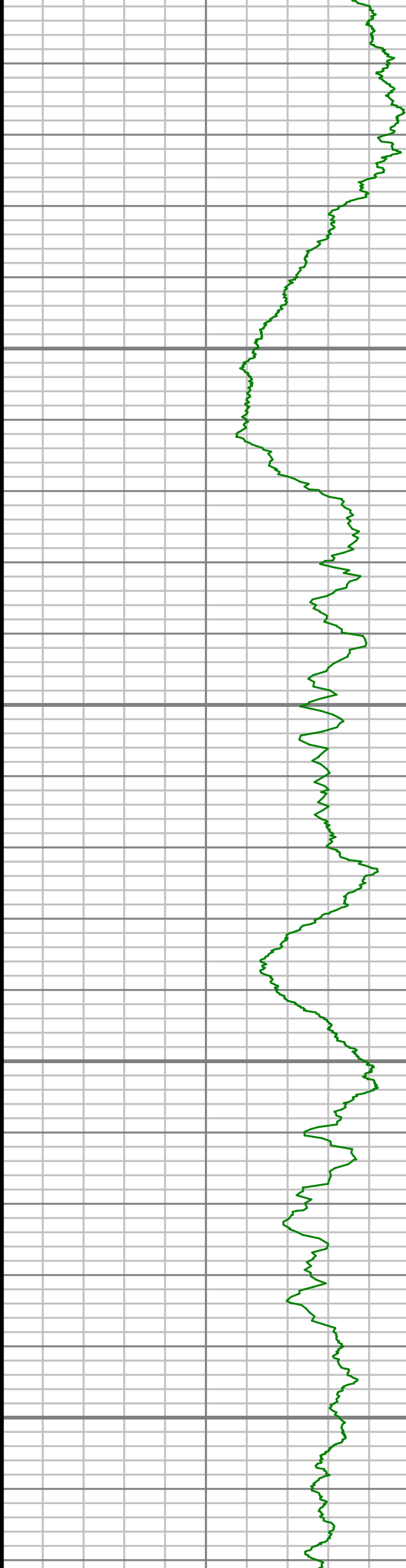
7650

7700



S: 51 MD: 7543.00 ft Inc: 89.76
deg Az: 358.86 deg TVD: 7029.01 ft

S: 52 MD: 7634.00 ft Inc: 91.28
deg Az: 0.23 deg TVD: 7028.19 ft

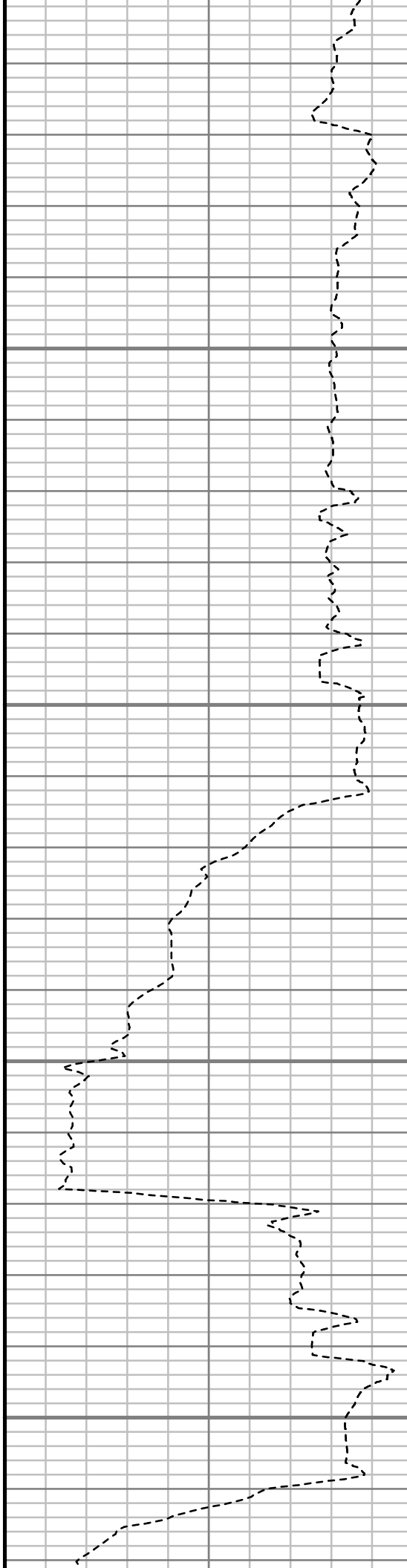


7750

7800

7850

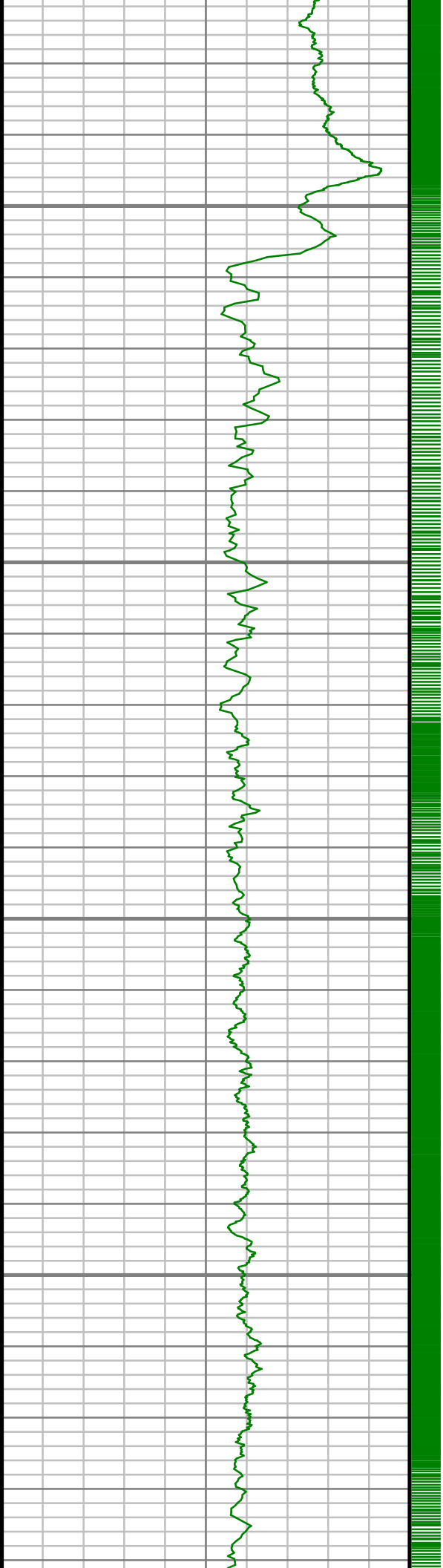
7900



S: 53 MD: 7729.00 ft Inc: 91.85
deg Az: 0.76 deg TVD: 7025.59
ft

S: 54 MD: 7824.00 ft Inc: 91.65
deg Az: 0.60 deg TVD: 7022.70
ft

S: 55 MD: 7919.00 ft Inc: 90.87

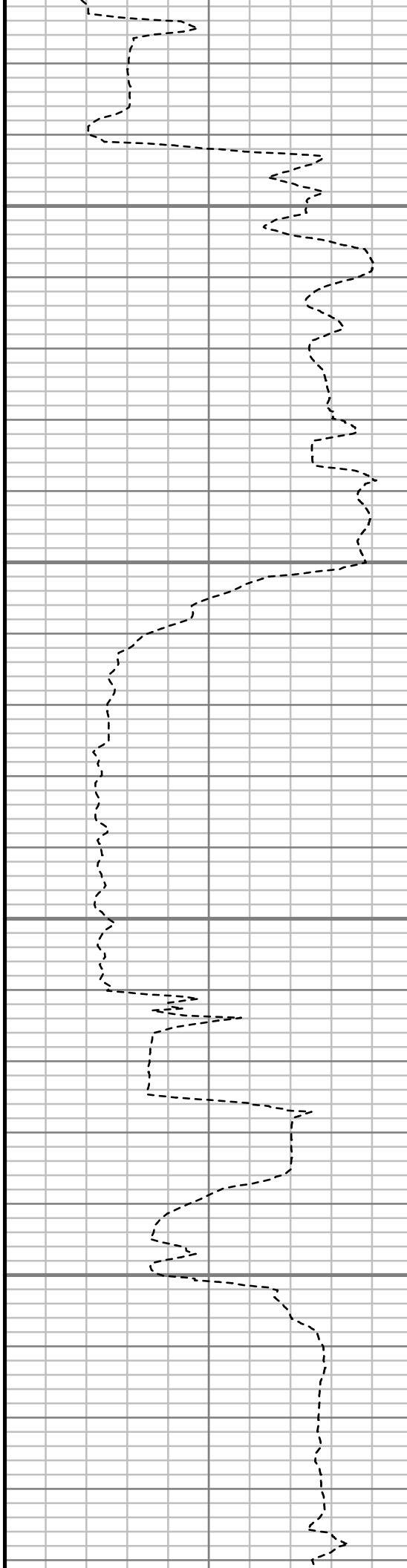


7950

8000

8050

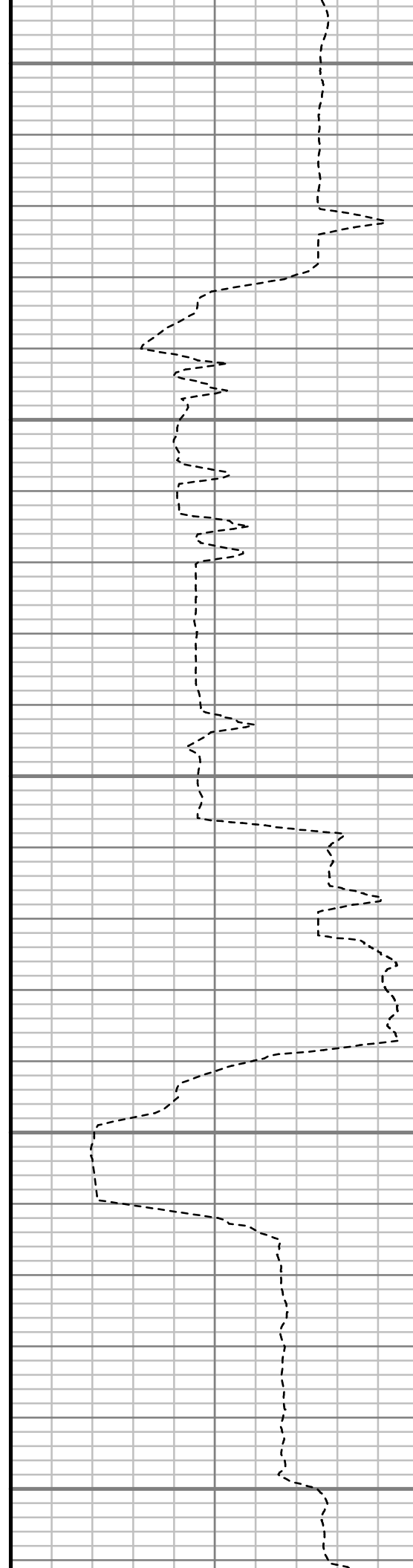
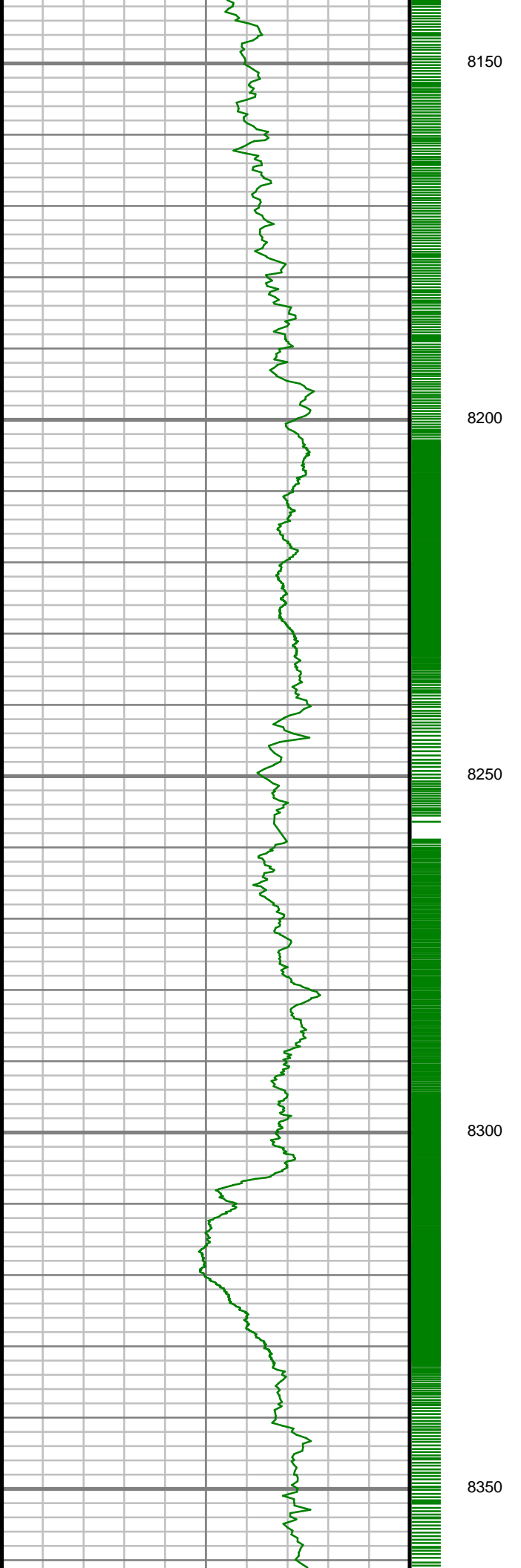
8100



deg Az: 0.73 deg TVD: 7020.61
ft

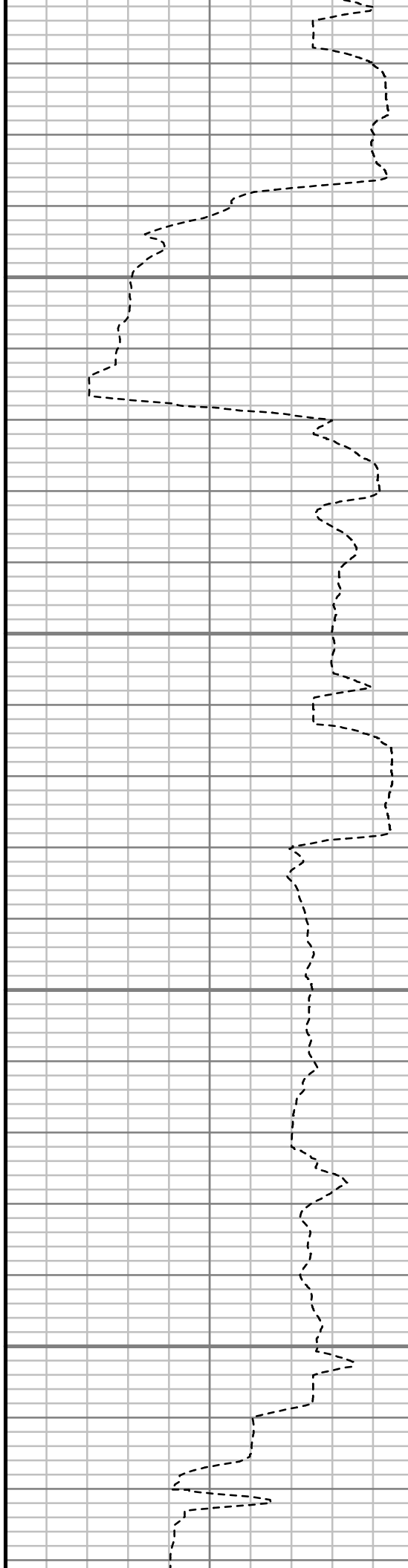
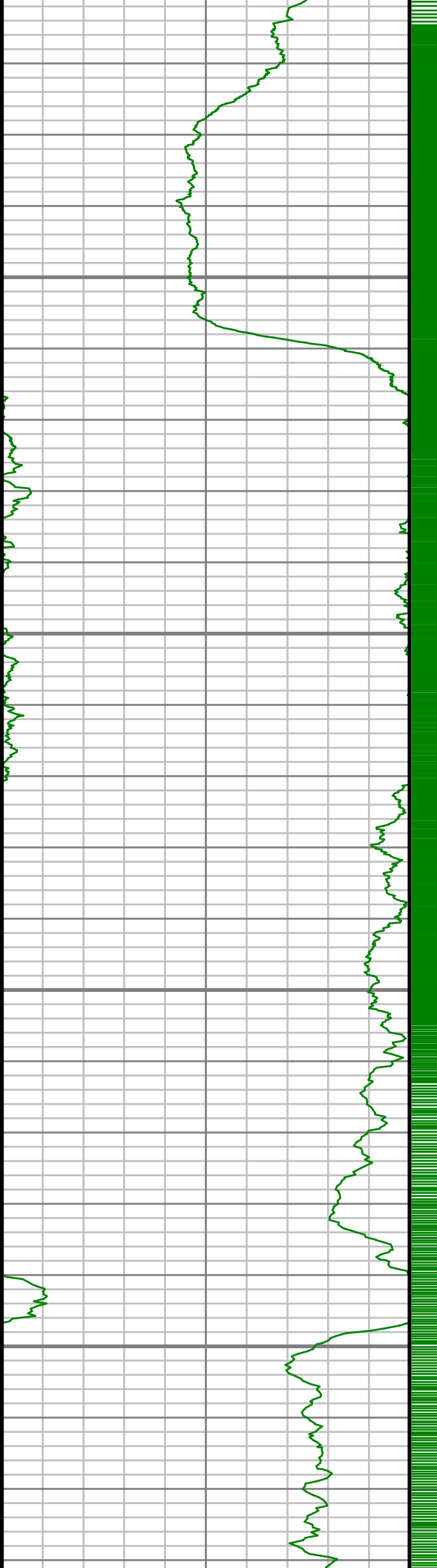
S: 56 MD: 8015.00 ft Inc: 90.00
deg Az: 0.94 deg TVD: 7019.88
ft

S: 57 MD: 8110.00 ft Inc: 90.10
deg Az: 0.11 deg TVD: 7019.79
ft



S: 58 MD: 8205.00 ft Inc: 90.94
deg Az: 359.51 deg TVD:
7018.93 ft

S: 59 MD: 8300.00 ft Inc: 90.94
deg Az: 359.74 deg TVD:
7017.37 ft



S: 60 MD: 8395.00 ft Inc: 90.37
deg Az: 1.06 deg TVD: 7016.28
ft

S: 61 MD: 8490.00 ft Inc: 89.60
deg Az: 1.48 deg TVD: 7016.31
ft



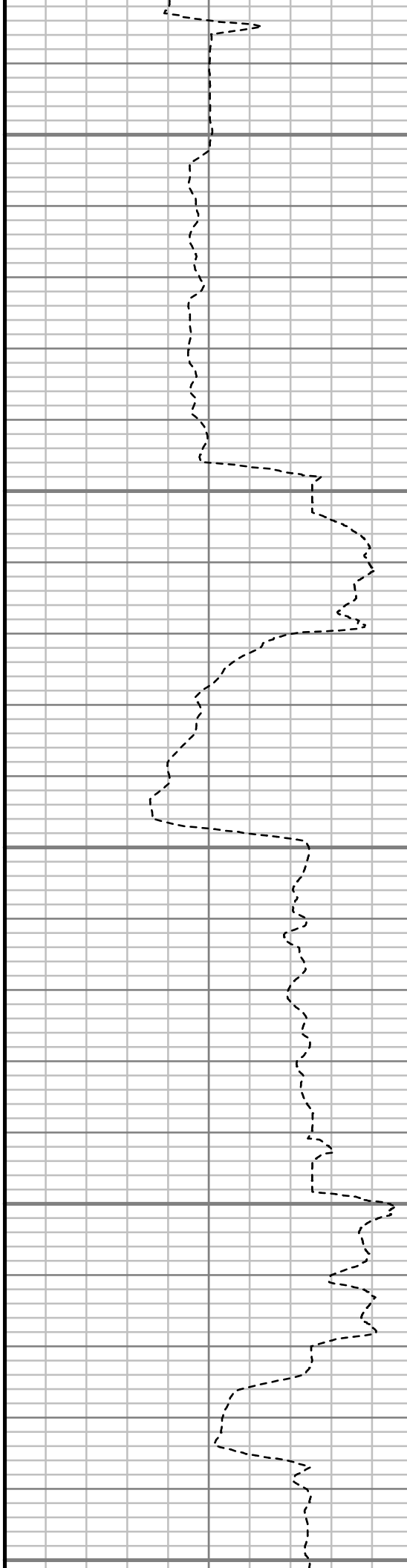
8600

8650

8700

8750

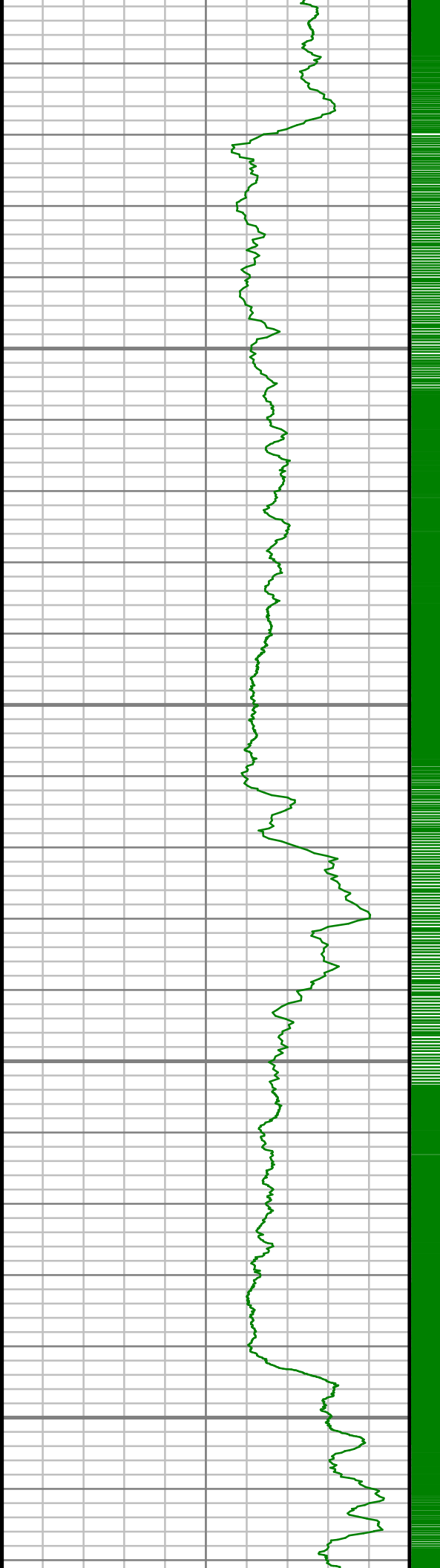
8800



S: 62 MD: 8585.00 ft Inc: 89.06
deg Az: 1.51 deg TVD: 7017.42
ft

S: 63 MD: 8681.00 ft Inc: 89.87
deg Az: 1.93 deg TVD: 7018.32
ft

S: 64 MD: 8776.00 ft Inc: 90.57
deg Az: 0.30 deg TVD: 7017.96
ft

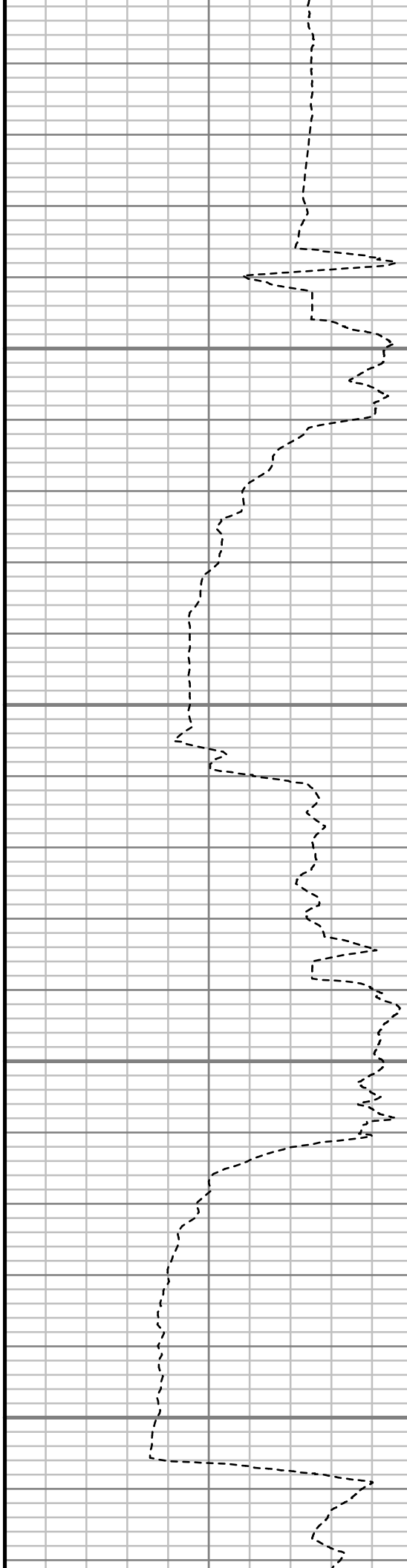


8850

8900

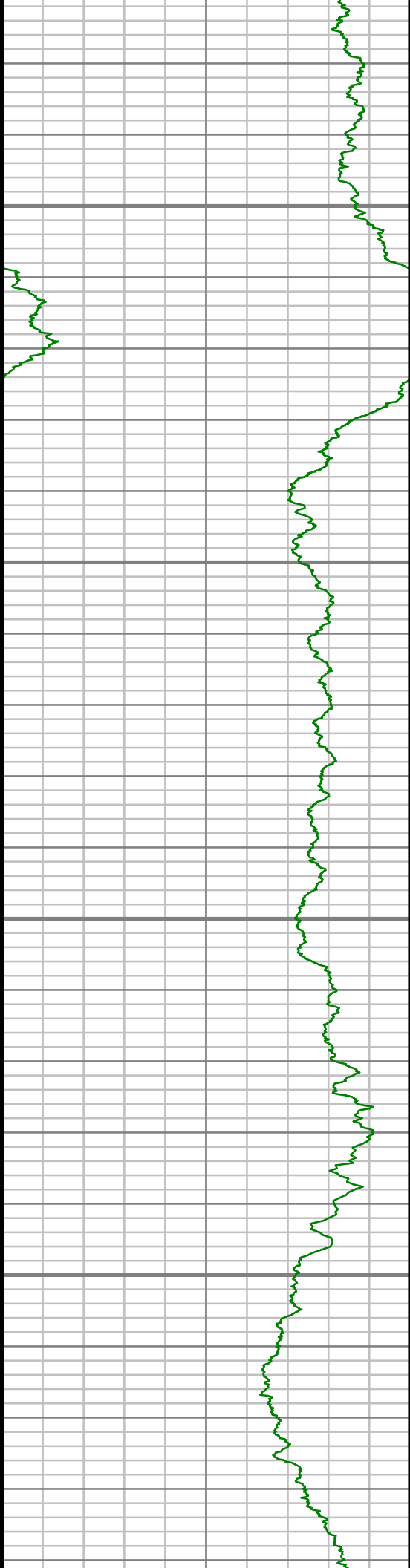
8950

9000



S: 65 MD: 8872.00 ft Inc: 91.55
deg Az: 359.42 deg TVD:
7016.19 ft

S: 66 MD: 8967.00 ft Inc: 91.34
deg Az: 359.94 deg TVD:
7013.79 ft



9050

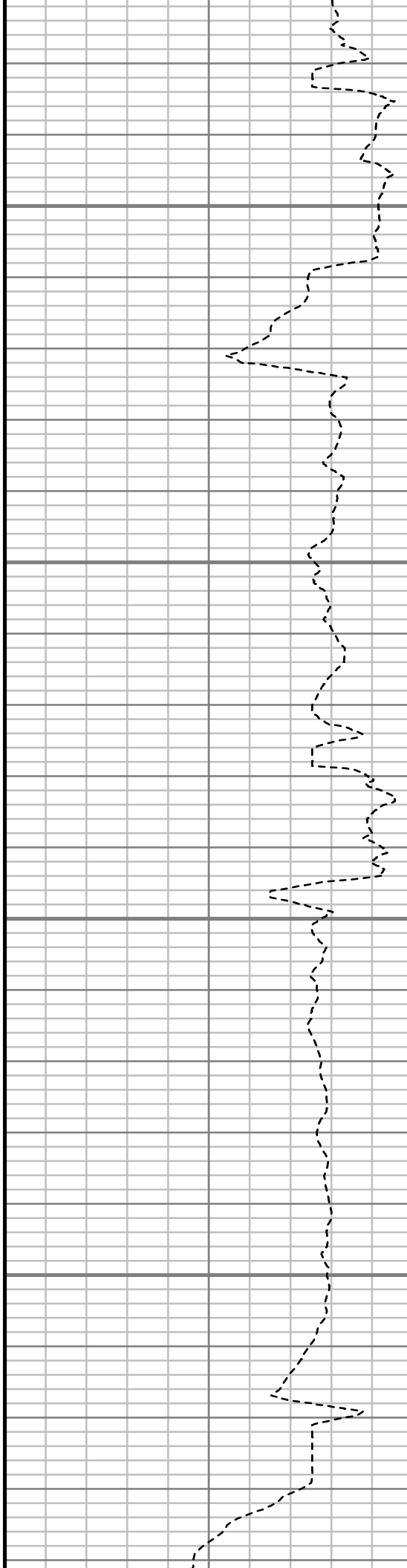
9100

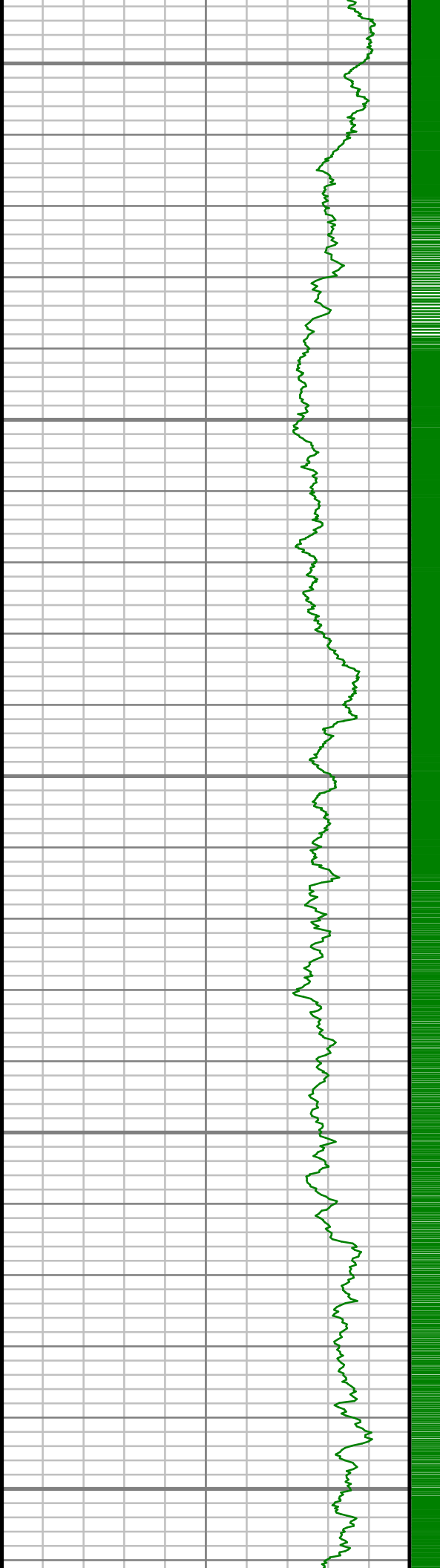
9150

9200

S: 67 MD: 9062.00 ft Inc: 89.70
deg Az: 358.72 deg TVD:
7012.93 ft

S: 68 MD: 9157.00 ft Inc: 89.23
deg Az: 357.31 deg TVD:
7013.82 ft





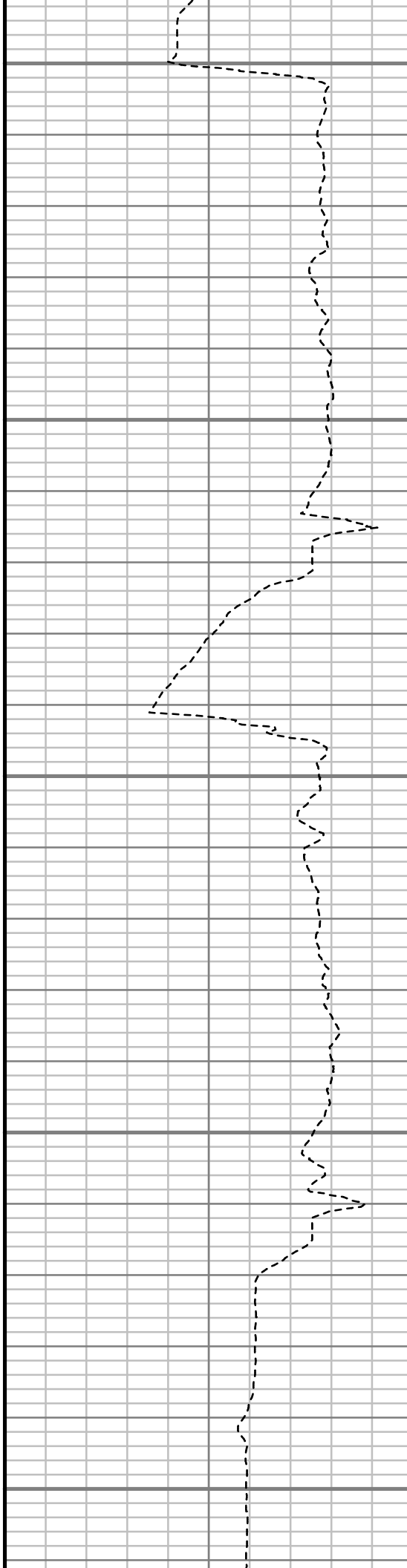
9250

9300

9350

9400

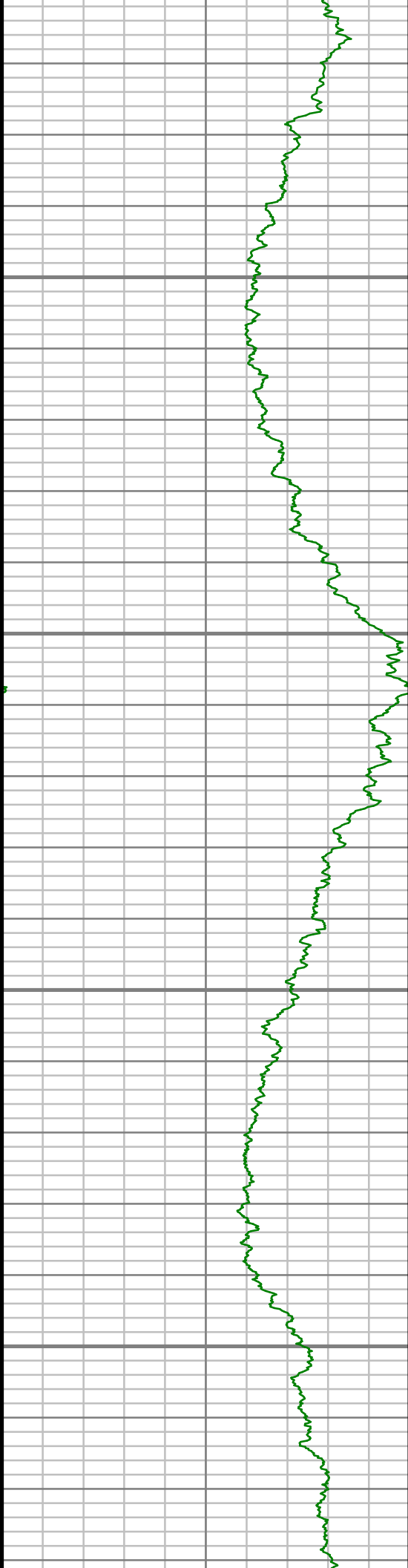
9450



S: 69 MD: 9253.00 ft Inc: 88.96
deg Az: 357.26 deg TVD:
7015.34 ft

S: 70 MD: 9348.00 ft Inc: 88.89
deg Az: 357.19 deg TVD:
7017.12 ft

S: 71 MD: 9443.00 ft Inc: 89.23
deg Az: 357.17 deg TVD:
7018.68 ft

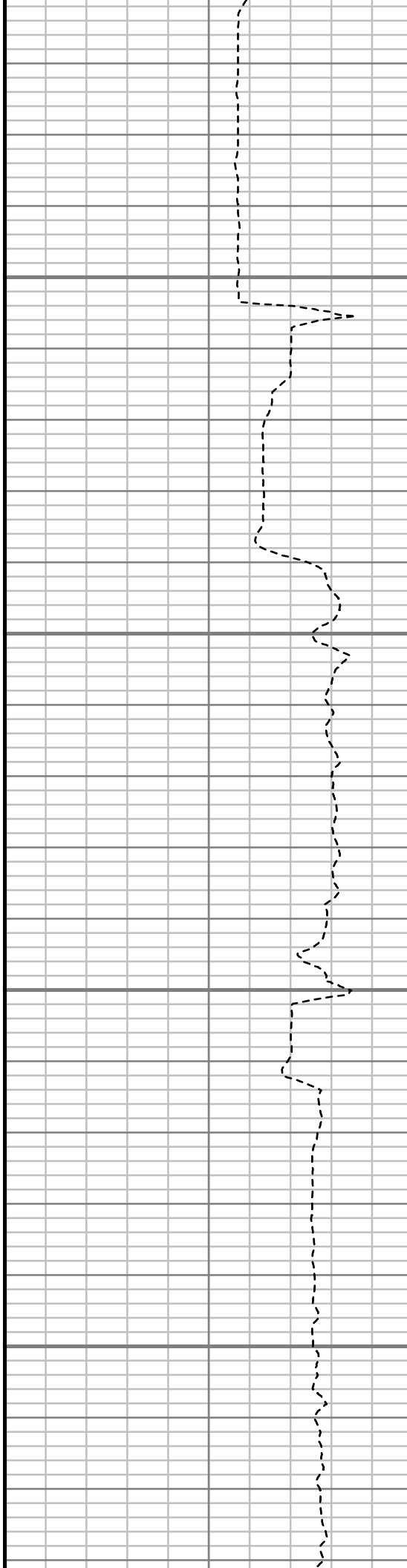


9500

9550

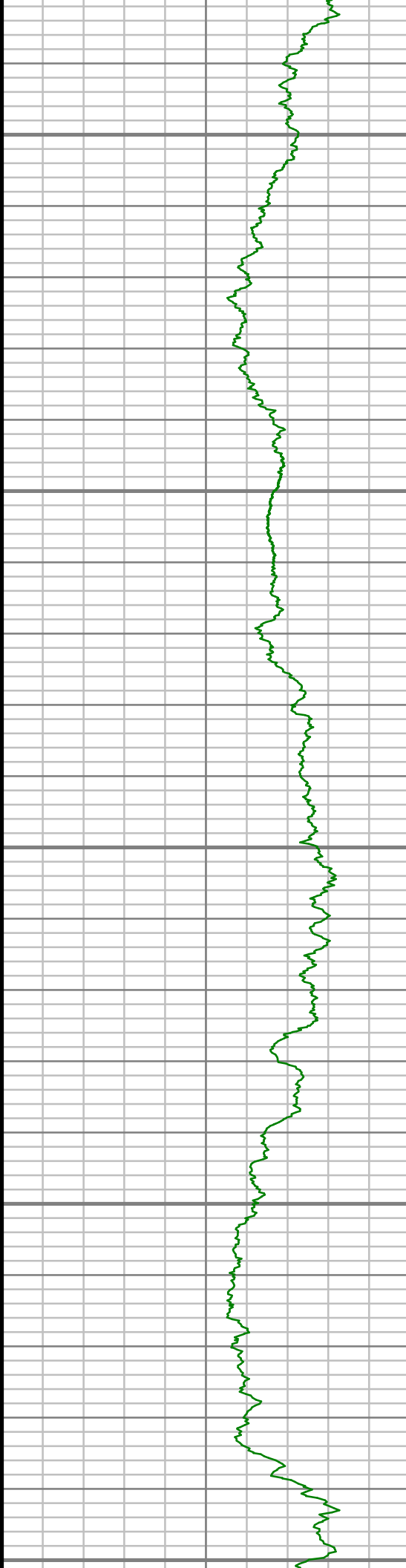
9600

9650



S: 72 MD: 9538.00 ft Inc: 88.76
deg Az: 357.02 deg TVD:
7020.35 ft

S: 73 MD: 9633.00 ft Inc: 88.89
deg Az: 357.10 deg TVD:
7022.29 ft



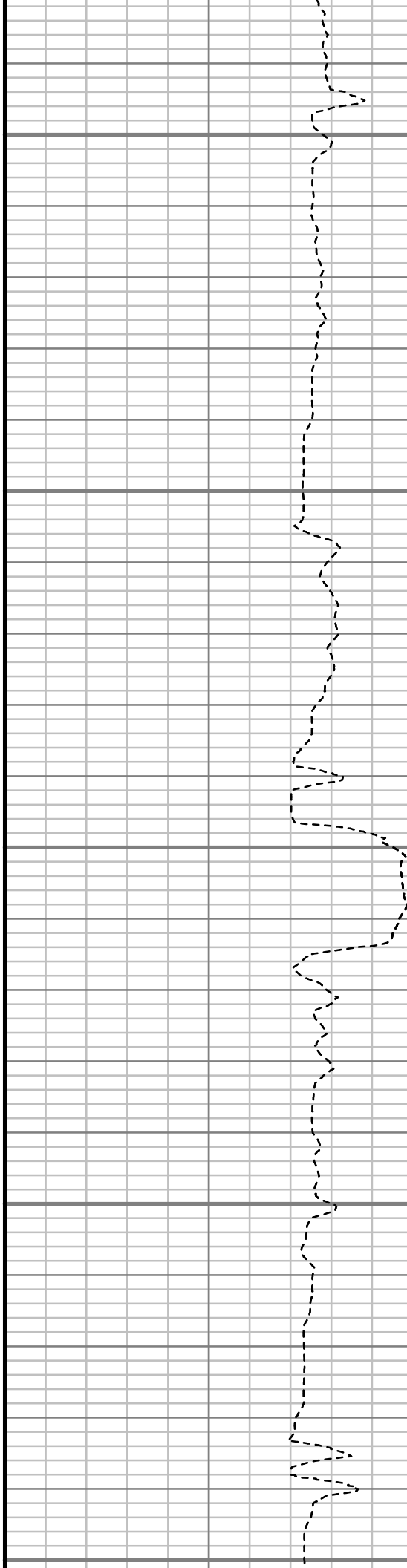
9700

9750

9800

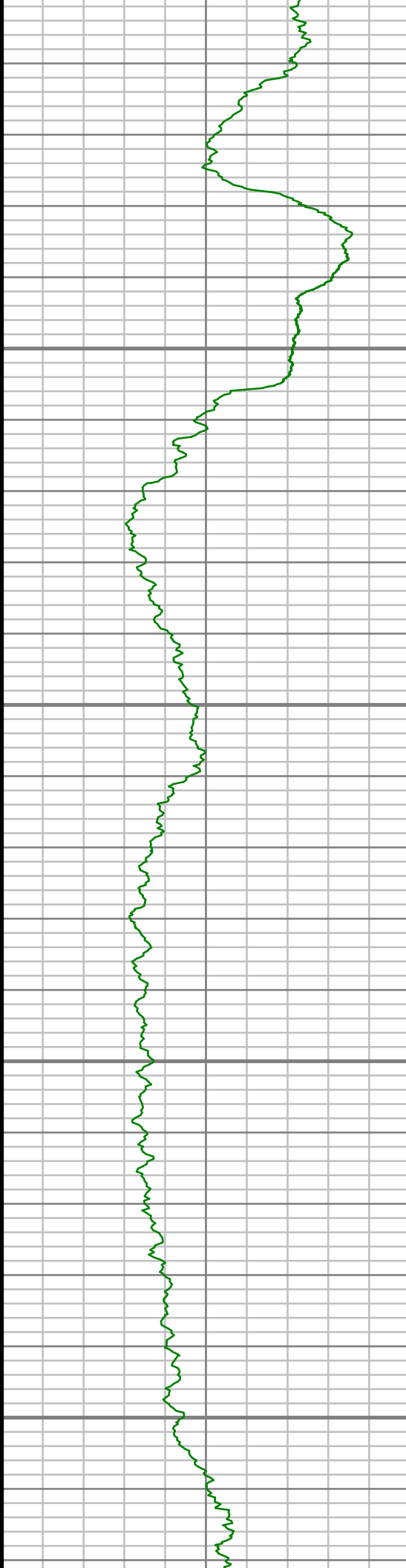
9850

9900



S: 74 MD: 9728.00 ft Inc: 88.82
deg Az: 356.67 deg TVD:
7024.19 ft

S: 75 MD: 9824.00 ft Inc: 89.23
deg Az: 357.77 deg TVD:
7025.82 ft

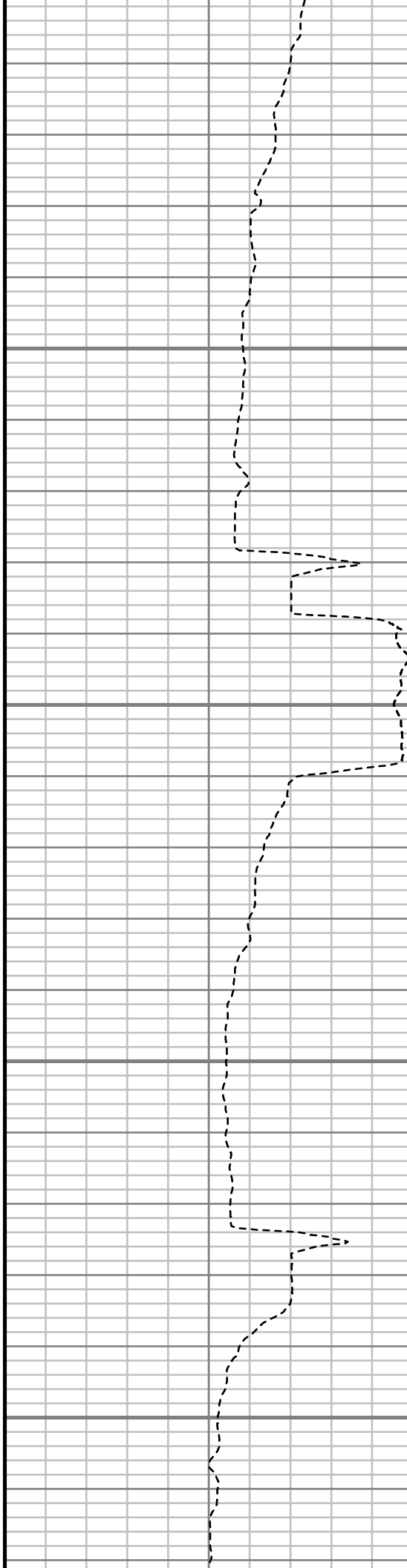


9950

10000

10050

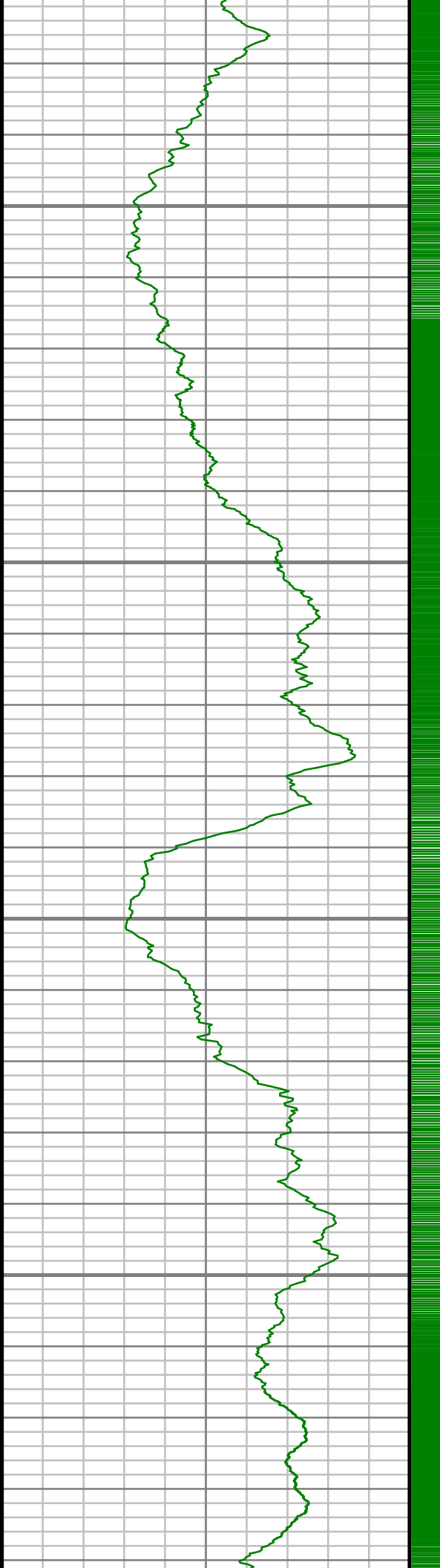
10100



S: 76 MD: 9919.00 ft Inc: 88.89
deg Az: 357.22 deg TVD:
7027.38 ft

S: 77 MD: 10014.00 ft Inc:
89.60 deg Az: 358.73 deg TVD:
7028.63 ft

S: 78 MD: 10109.00 ft Inc:
89.97 deg Az: 357.95 deg TVD:
7028.99 ft



10150

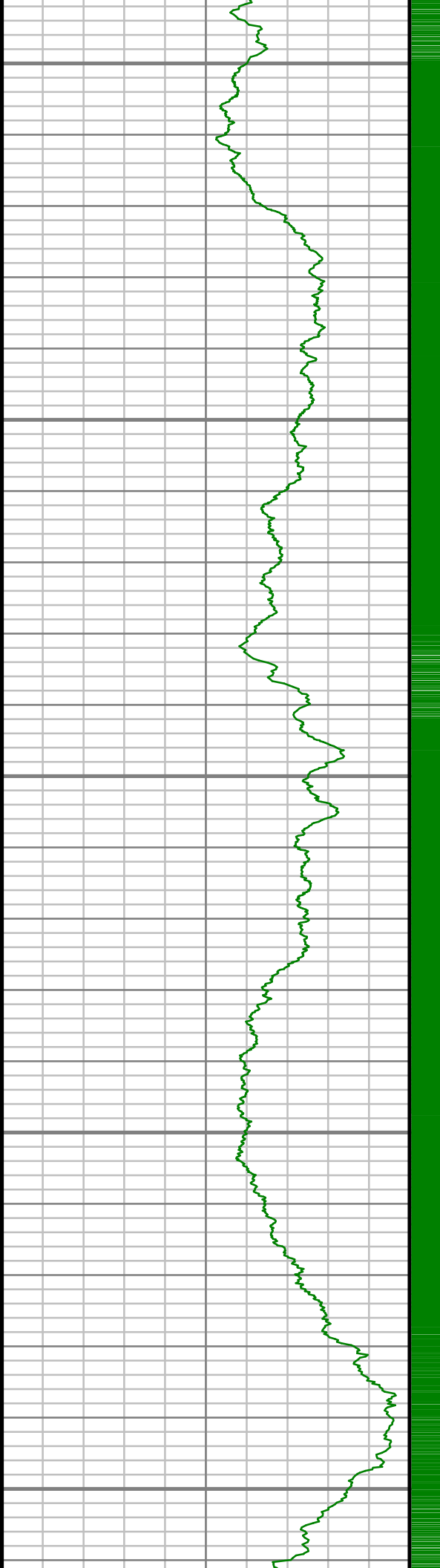
10200

10250

10300

S: 79 MD: 10204.00 ft Inc:
90.84 deg Az: 358.16 deg TVD:
7028.32 ft

S: 80 MD: 10299.00 ft Inc:
91.08 deg Az: 357.52 deg TVD:
7026.74 ft



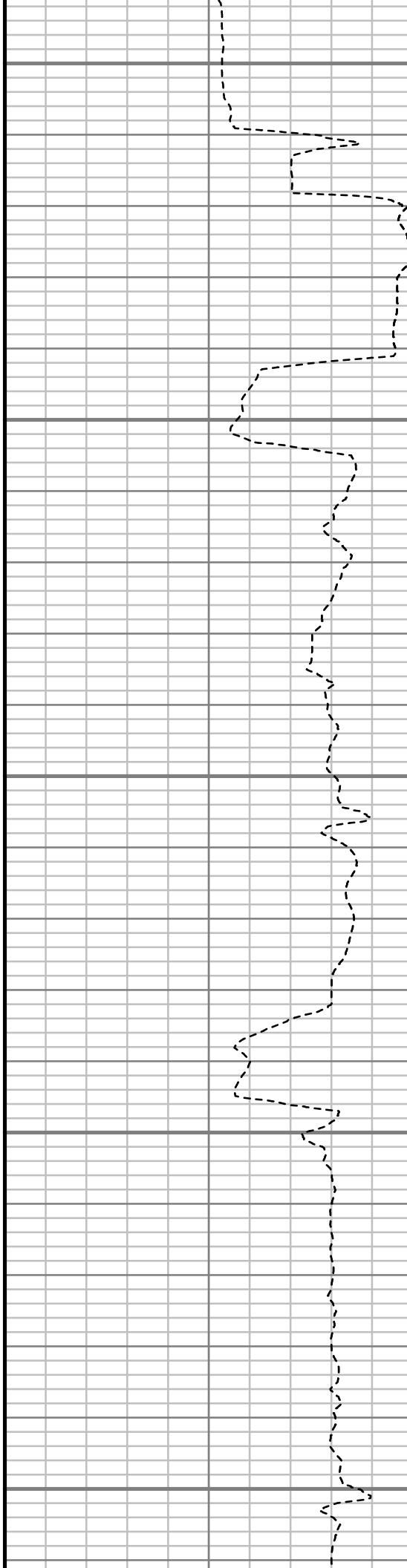
10350

10400

10450

10500

10550



S: 81 MD: 10394.00 ft Inc:
91.07 deg Az: 359.32 deg TVD:
7024.95 ft

S: 82 MD: 10489.00 ft Inc:
91.04 deg Az: 359.10 deg TVD:
7023.20 ft

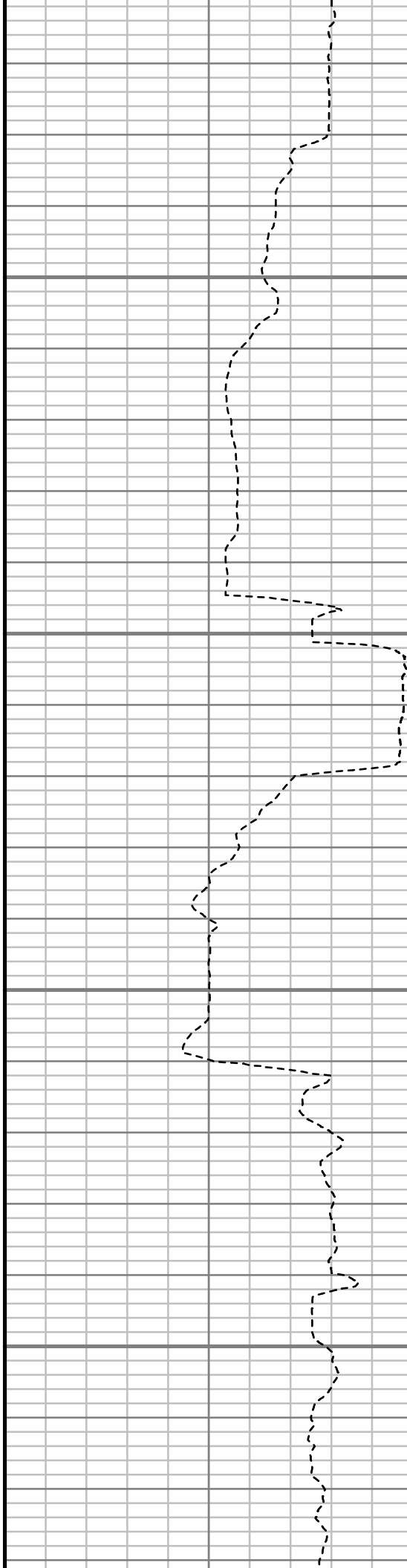


10600

10650

10700

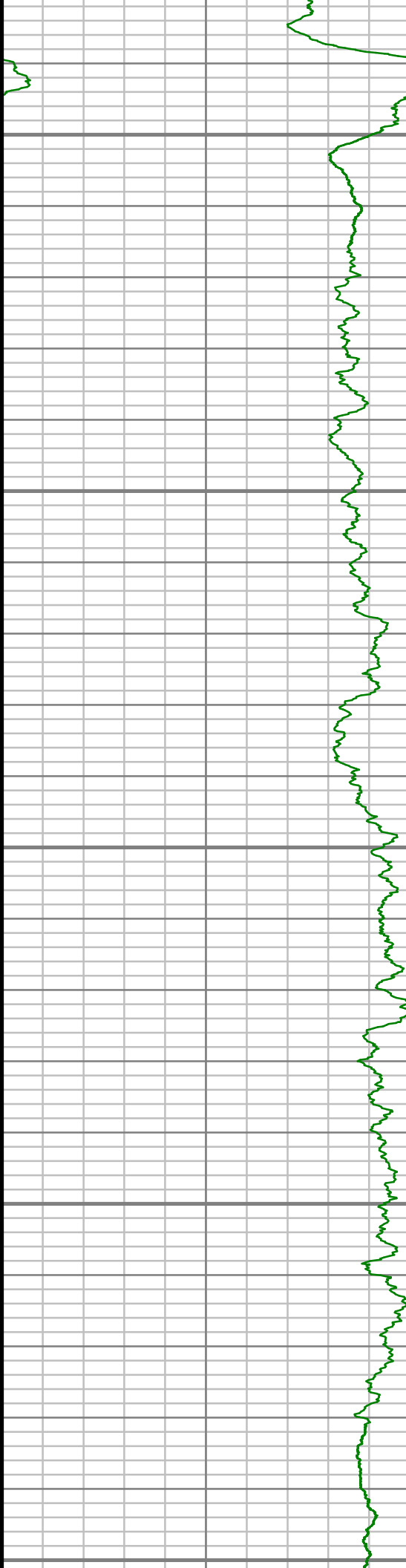
10750



S: 83 MD: 10584.00 ft Inc:
91.41 deg Az: 358.58 deg TVD:
7021.17 ft

S: 84 MD: 10679.00 ft Inc:
90.30 deg Az: 358.91 deg TVD:
7019.75 ft

S: 85 MD: 10775.00 ft Inc:
91.14 deg Az: 359.27 deg TVD:
7018.54 ft



10800

10850

10900

10950

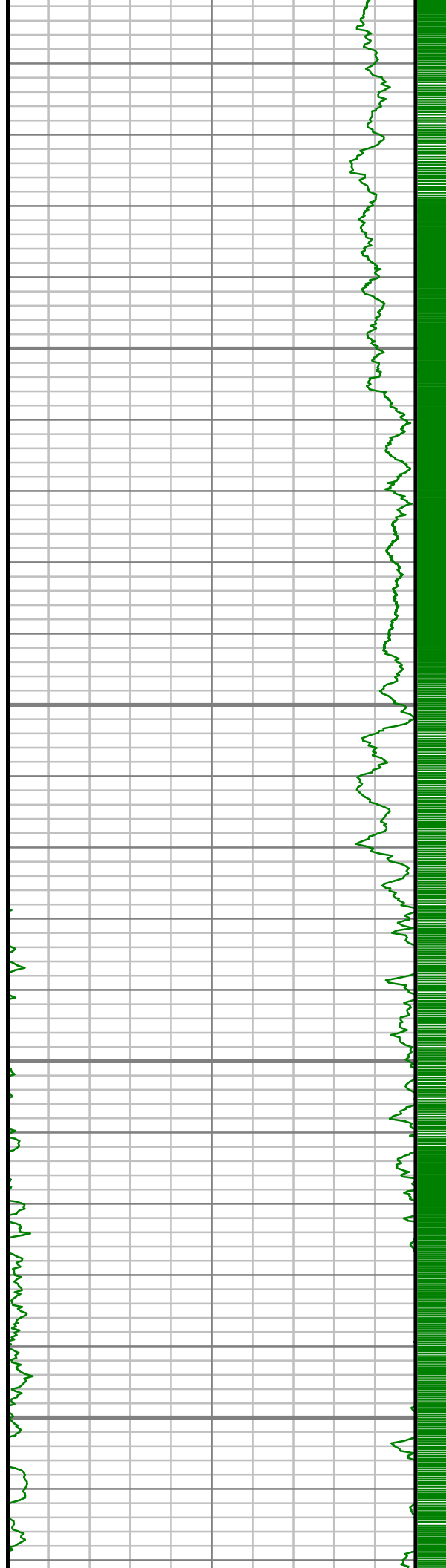
11000



7018.34 ft

S: 86 MD: 10870.00 ft Inc:
90.10 deg Az: 0.94 deg TVD:
7017.51 ft

S: 87 MD: 10965.00 ft Inc:
90.27 deg Az: 0.78 deg TVD:
7017.20 ft



11050

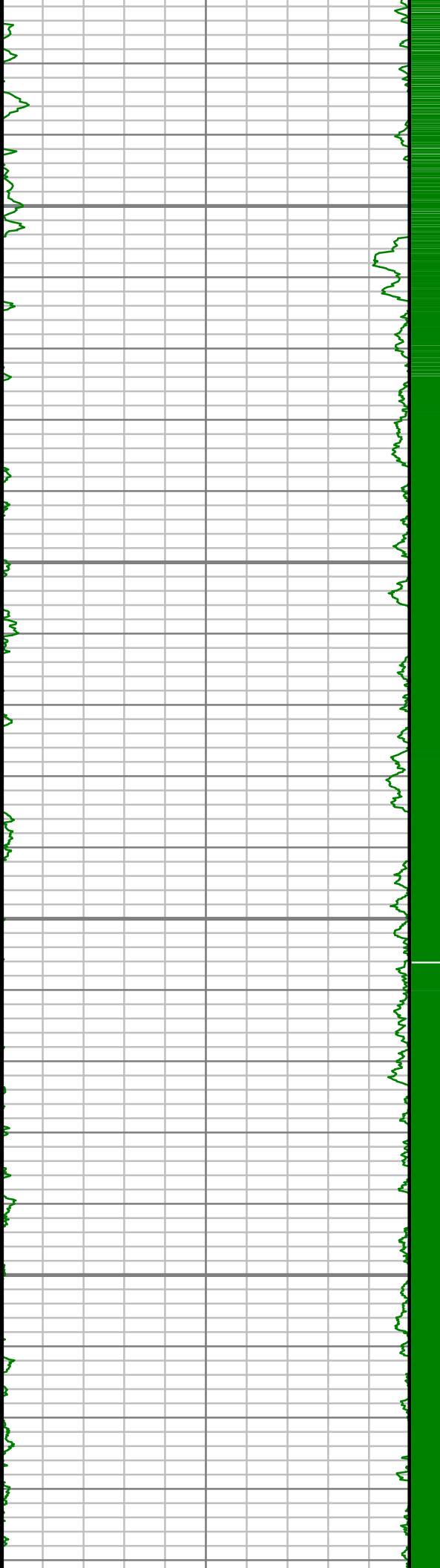
11100

11150

11200

S: 88 MD: 11060.00 ft Inc:
90.10 deg Az: 2.51 deg TVD:
7016.90 ft

S: 89 MD: 11155.00 ft Inc:
89.36 deg Az: 4.00 deg TVD:
7017.34 ft



11250

11300

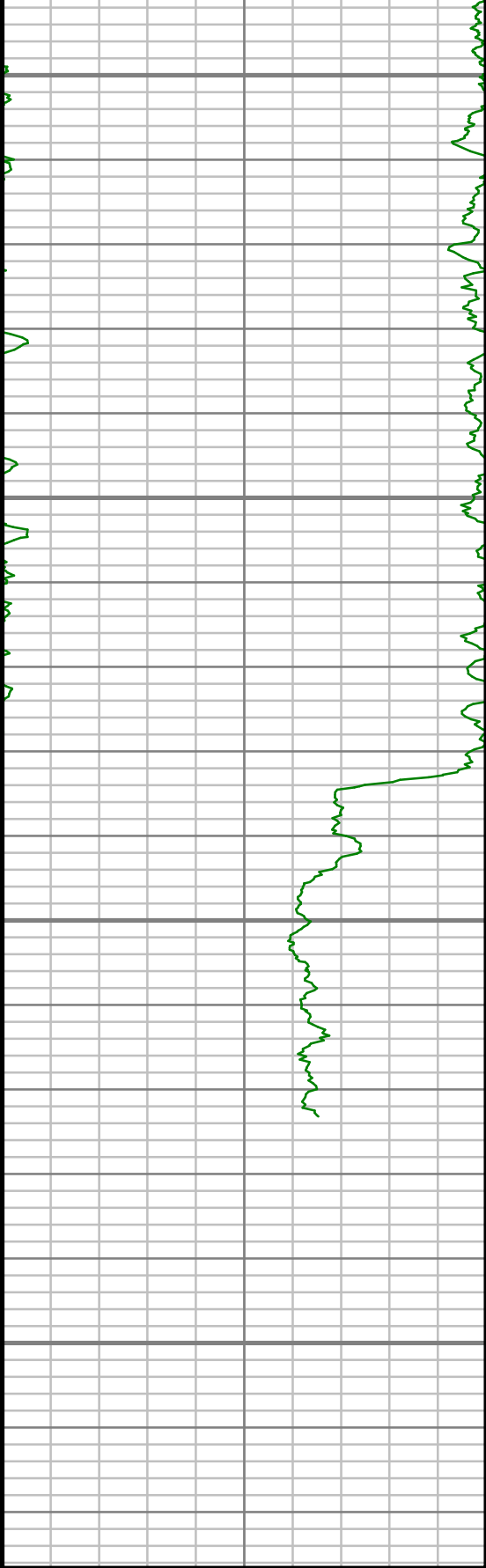
11350

11400

S: 90 MD: 11251.00 ft Inc:
89.90 deg Az: 4.08 deg TVD:
7017.96 ft

S: 91 MD: 11346.00 ft Inc:
90.10 deg Az: 3.79 deg TVD:
7017.96 ft





11450

11500

11550

11600

Gamma Ray (GR)

0 Unit = aapi 150

MEASURED DEPTH
1:240 (ft)

S: 92 MD: 11441.00 ft Inc:
91.18 deg Az: 3.99 deg TVD:
7016.90 ft

S: 93 MD: 11536.00 ft Inc:
90.94 deg Az: 2.47 deg TVD:
7015.15 ft

S: 94 MD: 11563.00 ft Inc:
91.14 deg Az: 2.29 deg TVD:
7014.66 ft

Rate of Penetration (ROP)

500 Unit = ft/hr 0

Comments



MWD Survey Report

Well Location	DALE PAD
Well Name	DALE 4D-20H-O264
Survey Date	8/22/2014
Latitude	40°7'3.511"N
Longitude	104°34'18.984"W
Btotal	52539 nT
Dip	66.73 deg
Magnetic Declination	8.38 deg
North Reference	True North
Grid Correction	None
Depth Reference	RKB (25.00 ft)
Calculation Method	Minimum Curvature
Section (VS) Ref	0.00N (ft), 0.00E (ft), 359.33Azim (deg)
Operator(s)	C. WILSON, S. WAXLER, T. LE

Well Notes

MD	Inc	Azim	TVD	VS	+N/-S	+E/-W	Closure Distance	Closure Direction	DLS
ft	deg	deg	ft	ft	ft	ft	ft	deg	"/100ft
0.00	0.00	0.00	0.00	0.00	0.00	0.00	0.00	0.00	Invalid
140.00	0.18	242.67	140.00	-0.10	-0.10	-0.19	0.21	242.67	0.13
232.00	0.44	271.14	232.00	-0.15	-0.16	-0.67	0.69	256.84	0.32
323.00	0.26	322.73	323.00	0.03	0.02	-1.15	1.15	270.86	0.38
415.00	0.97	191.07	414.99	-0.56	-0.58	-1.42	1.54	247.95	1.26
507.00	1.58	164.62	506.97	-2.55	-2.56	-1.24	2.85	205.72	0.91
598.00	2.73	169.01	597.90	-5.90	-5.90	-0.49	5.92	184.74	1.27
690.00	2.55	169.54	689.81	-10.07	-10.06	0.30	10.07	178.29	0.19
781.00	4.05	176.57	780.65	-15.27	-15.26	0.86	15.29	176.78	1.70
873.00	4.31	175.87	872.41	-21.97	-21.95	1.30	21.99	176.60	0.29
964.00	3.96	184.39	963.17	-28.51	-28.50	1.31	28.53	177.37	0.78
1040.00	3.52	183.69	1039.01	-33.45	-33.44	0.96	33.45	178.36	0.58
1155.00	3.03	189.70	1153.82	-39.96	-39.96	0.22	39.96	179.69	0.52
1338.00	8.70	184.90	1335.79	-58.51	-58.54	-1.78	58.56	181.74	3.11
1522.00	10.69	186.01	1517.15	-89.32	-89.38	-4.76	89.51	183.05	1.08
1704.00	10.69	183.51	1696.00	-122.91	-123.01	-7.56	123.24	183.52	0.26
1887.00	11.28	183.33	1875.65	-157.68	-157.81	-9.64	158.10	183.49	0.32
2070.00	10.69	182.13	2055.29	-192.49	-192.63	-11.30	192.97	183.36	0.34
2252.00	9.86	175.09	2234.38	-224.89	-225.03	-10.60	225.28	182.70	0.83

MD	Inc	Azim	TVD	VS	+N/-S	+E/-W	Closure Distance	Closure Direction	DLS
ft	deg	deg	ft	ft	ft	ft	ft	deg	°/100ft
2436.00	9.33	176.41	2415.80	-255.50	-255.62	-8.32	255.75	181.86	0.31
2619.00	11.16	183.07	2595.88	-288.00	-288.12	-8.34	288.24	181.66	1.19
2802.00	8.52	186.75	2776.18	-319.12	-319.27	-10.88	319.45	181.95	1.48
2992.00	7.83	185.69	2964.25	-345.93	-346.11	-13.82	346.39	182.29	0.37
3182.00	0.44	58.07	3153.68	-358.43	-358.63	-14.49	358.92	182.31	4.26
3373.00	0.70	65.49	3344.67	-357.58	-357.76	-12.80	357.98	182.05	0.14
3563.00	0.88	63.20	3534.65	-356.47	-356.61	-10.44	356.76	181.68	0.10
3753.00	1.40	2.73	3724.62	-353.51	-353.64	-9.02	353.75	181.46	0.65
3944.00	2.05	334.56	3915.53	-348.09	-348.24	-10.37	348.39	181.71	0.55
4135.00	0.69	300.69	4106.47	-344.40	-344.57	-12.83	344.81	182.13	0.80
4325.00	1.10	238.70	4296.46	-344.73	-344.93	-15.36	345.27	182.55	0.52
4516.00	1.17	258.58	4487.42	-346.02	-346.27	-18.83	346.78	183.11	0.21
4706.00	0.67	284.19	4677.39	-346.10	-346.38	-21.80	347.06	183.60	0.33
4896.00	1.74	298.94	4867.35	-344.39	-344.71	-25.40	345.64	184.21	0.58
5086.00	1.33	100.05	5057.33	-343.37	-343.70	-25.76	344.66	184.29	1.59
5277.00	1.65	28.68	5248.28	-341.39	-341.68	-22.26	342.40	183.73	0.92
5467.00	1.77	50.65	5438.19	-337.18	-337.42	-18.69	337.94	183.17	0.35
5657.00	0.55	20.35	5628.15	-334.49	-334.71	-16.10	335.09	182.75	0.70

MD	Inc	Azim	TVD	VS	+N/-S	+E/-W	Closure Distance	Closure Direction	DLS
ft	deg	deg	ft	ft	ft	ft	ft	deg	°/100ft
5847.00	2.02	119.27	5818.11	-335.31	-335.49	-12.86	335.73	182.20	1.15
6038.00	2.72	135.19	6008.95	-340.25	-340.35	-6.73	340.42	181.13	0.50
6228.00	1.19	159.55	6198.83	-345.33	-345.39	-2.86	345.40	180.48	0.90
6419.00	1.44	84.23	6389.80	-346.98	-347.00	0.22	347.00	179.96	0.85
6514.00	3.91	353.12	6484.71	-343.65	-343.66	1.02	343.66	179.83	4.41
6609.00	13.00	347.38	6578.58	-329.95	-329.99	-1.71	330.00	180.30	9.60
6704.00	17.73	346.96	6670.16	-305.36	-305.46	-7.31	305.55	181.37	4.98
6799.00	25.15	349.19	6758.53	-271.31	-271.50	-14.37	271.88	183.03	7.86
6894.00	37.30	351.20	6839.62	-222.76	-223.04	-22.59	224.18	185.78	12.84
6990.00	52.20	352.97	6907.61	-155.90	-156.28	-31.74	159.47	191.48	15.57
7085.00	61.57	356.45	6959.47	-76.69	-77.15	-38.93	86.41	206.78	10.33
7179.00	72.51	358.21	6996.09	9.68	9.18	-42.91	43.88	282.07	11.76
7274.00	82.82	357.10	7016.36	102.32	101.78	-46.72	111.99	335.34	10.92
7452.00	89.43	357.44	7028.37	279.70	279.07	-55.18	284.48	348.82	3.72
7543.00	89.76	358.86	7029.01	370.67	370.02	-58.11	374.56	351.07	1.61
7634.00	91.28	0.23	7028.19	461.67	461.01	-58.84	464.75	352.73	2.24
7729.00	91.85	0.76	7025.59	556.61	555.97	-58.02	558.99	354.04	0.82
7824.00	91.65	0.60	7022.70	651.54	650.92	-56.89	653.40	355.00	0.27

MD	Inc	Azim	TVD	VS	+N/-S	+E/-W	Closure Distance	Closure Direction	DLS
ft	deg	deg	ft	ft	ft	ft	ft	deg	°/100ft
7919.00	90.87	0.73	7020.61	746.49	745.89	-55.78	747.97	355.72	0.83
8015.00	90.00	0.94	7019.88	842.45	841.87	-54.38	843.63	356.30	0.94
8110.00	90.10	0.11	7019.79	937.43	936.87	-53.51	938.40	356.73	0.89
8205.00	90.94	359.51	7018.93	1032.42	1031.86	-53.83	1033.27	357.01	1.09
8300.00	90.94	359.74	7017.37	1127.41	1126.85	-54.46	1128.16	357.23	0.24
8395.00	90.37	1.06	7016.28	1222.38	1221.84	-53.79	1223.02	357.48	1.52
8490.00	89.60	1.48	7016.31	1317.33	1316.81	-51.68	1317.83	357.75	0.92
8585.00	89.06	1.51	7017.42	1412.25	1411.77	-49.21	1412.63	358.00	0.57
8681.00	89.87	1.93	7018.32	1508.16	1507.73	-46.33	1508.44	358.24	0.95
8776.00	90.57	0.30	7017.96	1603.11	1602.70	-44.48	1603.32	358.41	1.87
8872.00	91.55	359.42	7016.19	1699.09	1698.68	-44.72	1699.27	358.49	1.37
8967.00	91.34	359.94	7013.79	1794.06	1793.65	-45.25	1794.22	358.55	0.59
9062.00	89.70	358.72	7012.93	1889.05	1888.64	-46.37	1889.21	358.59	2.16
9157.00	89.23	357.31	7013.82	1984.02	1983.57	-49.65	1984.19	358.57	1.56
9253.00	88.96	357.26	7015.34	2079.95	2079.45	-54.20	2080.16	358.51	0.29
9348.00	88.89	357.19	7017.12	2174.86	2174.32	-58.81	2175.12	358.45	0.10
9443.00	89.23	357.17	7018.68	2269.78	2269.20	-63.48	2270.08	358.40	0.35
9538.00	88.76	357.02	7020.35	2364.70	2364.06	-68.29	2365.05	358.35	0.52

MD	Inc	Azim	TVD	VS	+N/-S	+E/-W	Closure Distance	Closure Direction	DLS
ft	deg	deg	ft	ft	ft	ft	ft	deg	°/100ft
9633.00	88.89	357.10	7022.29	2459.60	2458.92	-73.16	2460.00	358.30	0.17
9728.00	88.82	356.67	7024.19	2554.50	2553.76	-78.33	2554.96	358.24	0.47
9824.00	89.23	357.77	7025.82	2650.42	2649.63	-82.98	2650.93	358.21	1.23
9919.00	88.89	357.22	7027.38	2745.35	2744.52	-87.13	2745.91	358.18	0.68
10014.00	89.60	358.73	7028.63	2840.32	2839.45	-90.49	2840.89	358.17	1.75
10109.00	89.97	357.95	7028.99	2935.30	2934.41	-93.24	2935.89	358.18	0.90
10204.00	90.84	358.16	7028.32	3030.27	3029.35	-96.47	3030.89	358.18	0.94
10299.00	91.08	357.52	7026.74	3125.23	3124.27	-100.05	3125.87	358.17	0.72
10394.00	91.07	359.32	7024.95	3220.19	3219.21	-102.68	3220.85	358.17	1.90
10489.00	91.04	359.10	7023.20	3315.18	3314.19	-103.99	3315.82	358.20	0.24
10584.00	91.41	358.58	7021.17	3410.15	3409.15	-105.91	3410.79	358.22	0.67
10679.00	90.30	358.91	7019.75	3505.14	3504.11	-107.99	3505.78	358.23	1.21
10775.00	91.14	359.27	7018.54	3601.13	3600.09	-109.52	3601.76	358.26	0.95
10870.00	90.10	0.94	7017.51	3696.11	3695.08	-109.34	3696.70	358.31	2.07
10965.00	90.27	0.78	7017.20	3791.07	3790.07	-107.92	3791.61	358.37	0.25
11060.00	90.10	2.51	7016.90	3885.99	3885.03	-105.20	3886.45	358.45	1.83
11155.00	89.36	4.00	7017.34	3980.76	3979.87	-99.81	3981.12	358.56	1.75
11251.00	89.90	4.08	7017.96	4076.44	4075.63	-93.04	4076.69	358.69	0.57

MD	Inc	Azim	TVD	VS	+N/-S	+E/-W	Closure Distance	Closure Direction	DLS
ft	deg	deg	ft	ft	ft	ft	ft	deg	°/100ft
11346.00	90.10	3.79	7017.96	4171.13	4170.40	-86.52	4171.30	358.81	0.37
11441.00	91.18	3.99	7016.90	4265.82	4265.18	-80.07	4265.93	358.92	1.15
11536.00	90.94	2.47	7015.15	4360.58	4360.01	-74.72	4360.65	359.02	1.62
11563.00	91.14	2.29	7014.66	4387.54	4386.98	-73.60	4387.60	359.04	1.01

MD	Inc	Azim	TVD	VS	+N/-S	+E/-W	Closure Distance	Closure Direction	DLS
ft	deg	deg	ft	ft	ft	ft	ft	deg	°/100ft

5" = 100' FEET MD