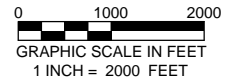
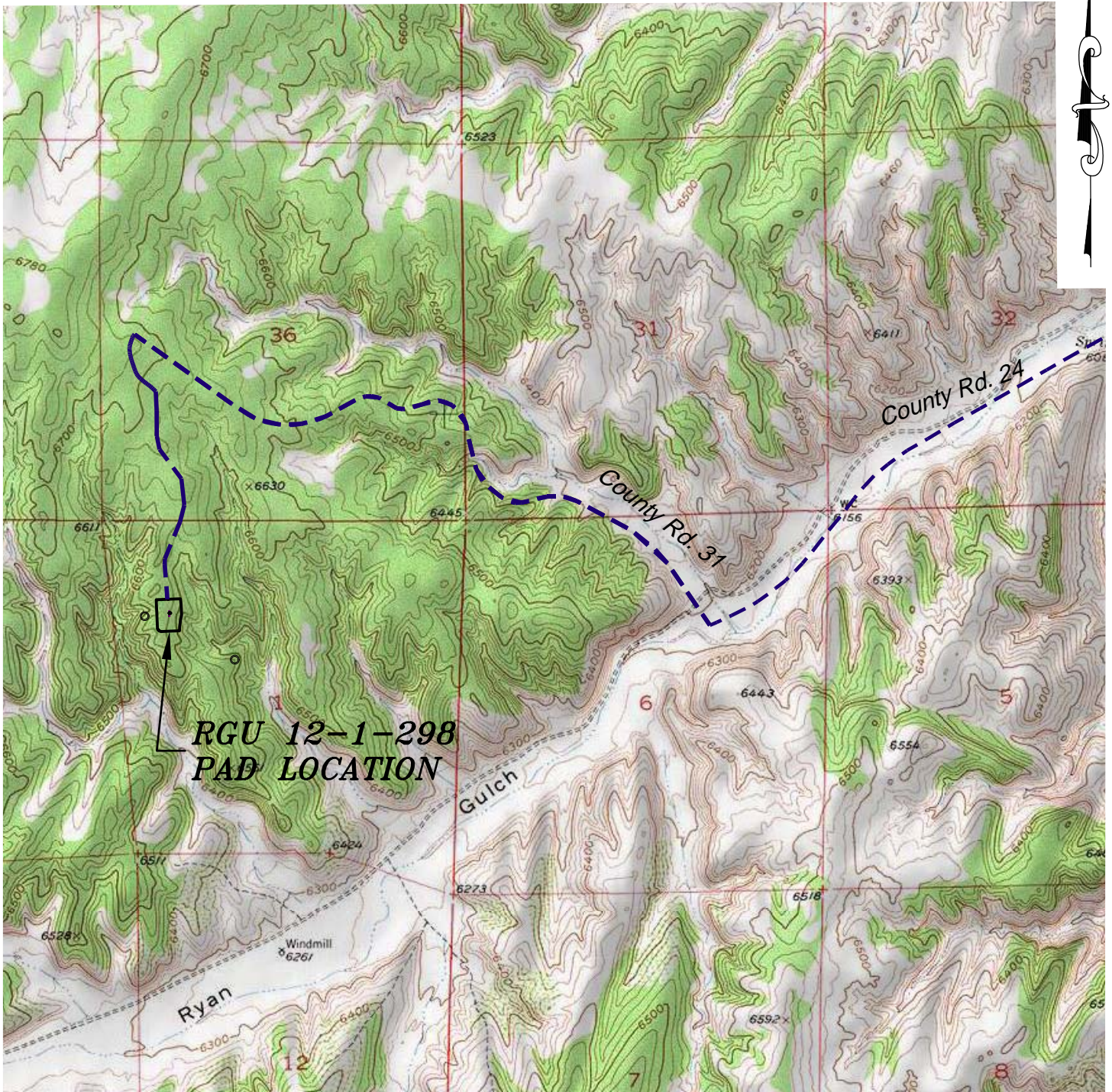


Section 1  
T. 2 S., R. 98 W.  
6th. P.M.



**ACCESS DESCRIPTION:**

FROM THE INTERSECTION OF STATE HIGHWAY 64 AND RIO BLANCO COUNTY ROAD 5 PROCEED SOUTHERLY ALONG COUNTY ROAD 5 ±14.5 MILES TO THE INTERSECTION WITH COUNTY ROAD 24 (Mile Marker 26.8), PROCEED WESTERLY ALONG COUNTY ROAD 24 ±1.8 MILES TO THE INTERSECTION WITH COUNTY ROAD 31, PROCEED RIGHT IN A NORTHERLY DIRECTION ±1.9 MILES TO AN INTERSECTION WITH A DIRT/GRAVEL ROAD, PROCEED LEFT IN A SOUTHERLY DIRECTION ±0.8 MILES TO THE EXISTING RGU 12-1-198 DRILL PAD LOCATION, AS SHOWN HEREON.

REVISED: 11/24/14

**Construction Plan Prepared for:**

**WPXENERGY** WPX Energy Rocky Mountain, LLC

136 East Third Street  
Rifle, Colorado 81650  
Ph. (970) 625-2720  
Fax (970) 625-2773



SCALE: 1" = 2000'  
DATE: 10/30/14  
PLAT: 5 of 7  
PROJECT: Highlands  
DFT: WKK

Drill Pad - Plat 5  
ACCESS ROAD & TOPO MAP