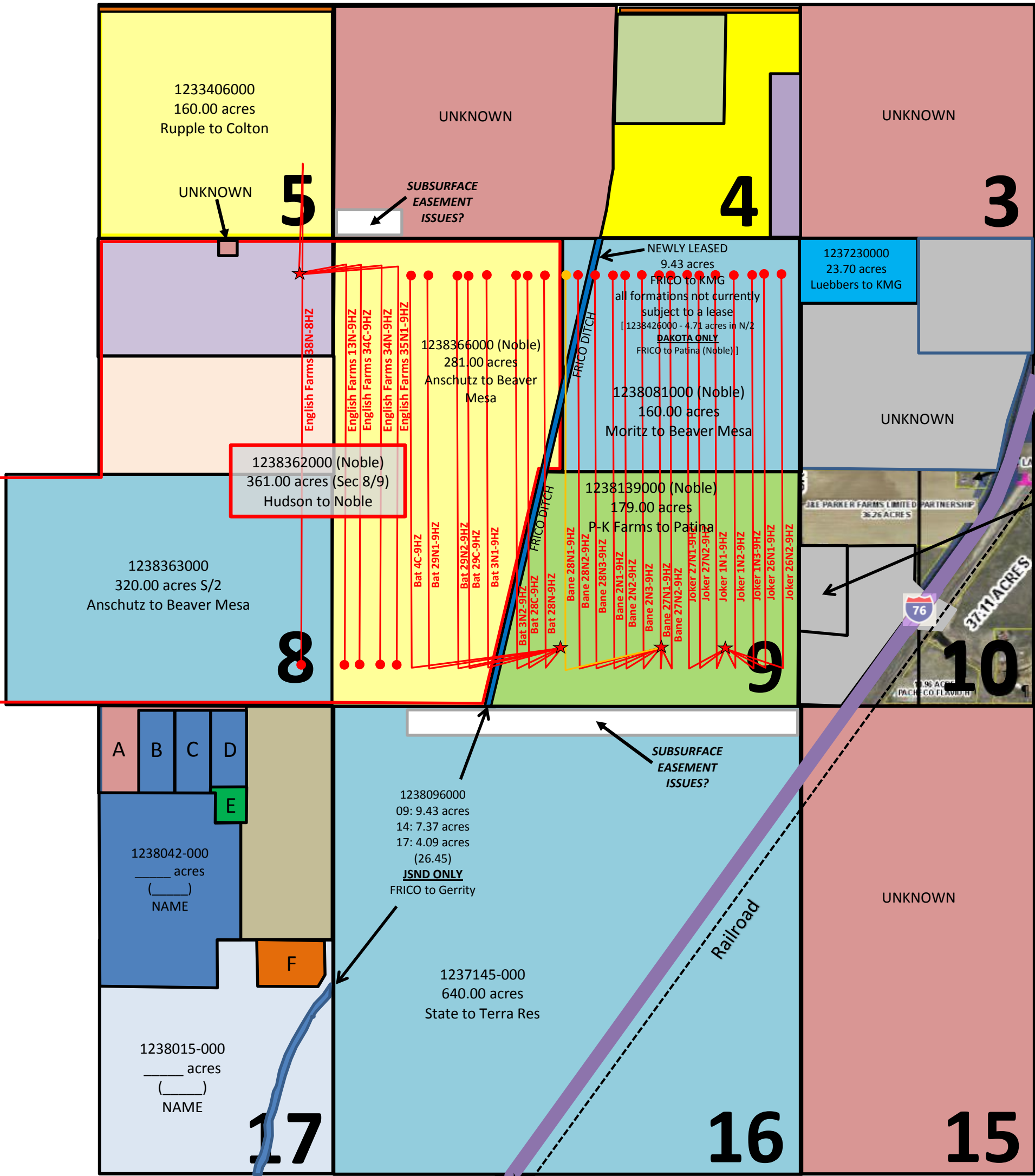


ENGLISH FARMS, BAT, BANE & JOKER
1N-65W

November 19, 2014



Rec 3980511
12.42 acres
Gray to Verdad

Bat 4C-9HZ: 9 W2
Bat 29N1-9HZ: 9 W2
Bat 29N2-9HZ: 9 W2
Bat 29C-9HZ: 9 W2
Bat 3N1-9HZ: 9 W2
Bat 3N2-9HZ: E2W2
Bat 28C-9HZ: 9 E2W2, W2E2
Bat 28N-9HZ: 9 E2W2, W2E2

Bane 28N1-9HZ: 9 E2W2, W2E2
Bane 28N2-9HZ: 9 E2W2, W2E2
Bane 28N3-9HZ: 9 E2W2, W2E2
Bane 2N1-9HZ: 9 W2E2
Bane 2N2-9HZ: 9 W2E2
Bane 2N3-9HZ: 9 E2
Bane 27N1-9HZ: 9 E2
Bane 27N2-9HZ: 9 E2

English Farms 38N-8HZ: 4 SWSW; 5 SESE; 8 E2E2; 9 W2W2
English Farms 13N-9HZ: 8 E2E2; 9 W2W2
English Farms 34C-9HZ: 8: E2E2; 9 W2W2
English Farms 34N-9HZ: 8 E2E2; 9 W2W2
English Farms 35N1-9HZ: 9 W2W2

Joker 27N1-9HZ: 9 E2
Joker 27N2-9HZ: 9 E2
Joker 1N1-9HZ: 9 E2
Joker 1N2-9HZ: 9 E2E2
Joker 1N3-9HZ: 9 E2E2
Joker 26N1-9HZ: 9 E2E2; 10 W2W2
Joker 26N2-9HZ: 9 E2E2; 10 W2W2

A. UNKNOWN?

B. 1238017-000 / 18.20 acres (18.20) / Dunker
C. 1238020-000 / ____ acres (____) / NAME
D. 1238019-000 / ____ acres (____) / NAME
E. 1238016-000 / ____ acres (____) / NAME
F. 1237888-000 / ____ acres (____) / NAME
? 1238015-000
? 1238018-000