



06/05/2014

VIA ELECTRONIC TRANSMITTAL

Colorado Oil and Gas Conservation Commission  
Attn: Matt Lepore, Director  
1120 Lincoln Street, Suite 801  
Denver, CO 80203

RE: 30-Day Affidavit and Certification Letter

GP-Hillside #1-18-18: 526' FNL, 1305' FEL, Sec. 20-T5N-R65W, Weld County, Colorado  
GP-Hillside #2-18-18: 538' FNL, 1305' FEL, Sec. 20-T5N-R65W, Weld County, Colorado  
GP-Hillside #3-18-18: 550' FNL, 1305' FEL, Sec. 20-T5N-R65W, Weld County, Colorado

Dear Mr. Lepore,

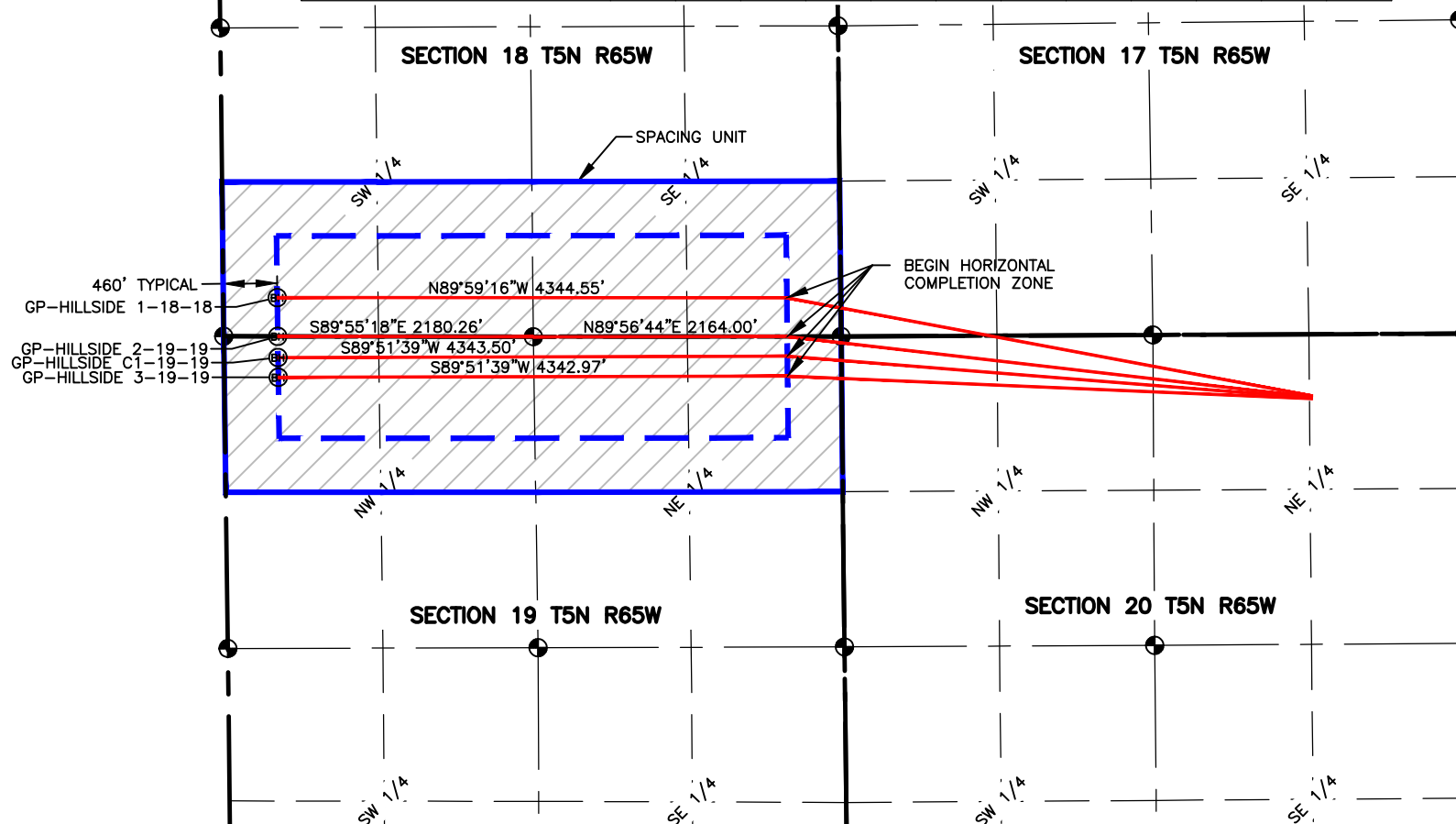
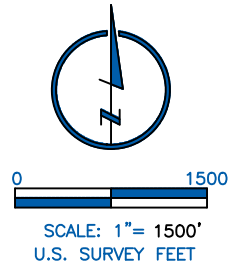
Mineral Resources, Inc. (MRI) hereby certifies that thirty (30) day notice has been given to all owners in the proposed wellbore spacing unit in accordance with Rule 318A.e(6). The notices were sent on 03/01/14. MRI has received no objections to the subject well locations, proposed spacing units, or additional producing information from any owner as described in C.R.S. §34-60-103(7). The thirty (30) day objection period has expired. MRI respectfully requests that the Director approve the wells. Should you have any questions or concerns please contact the undersigned at 720-420-5719.

Sincerely,

Clayton L. Doke  
Senior Engineer  
Integrated Petroleum Technologies, Inc  
Consultants to Mineral Resources, Inc

NAME: HILLSIDE  
 SPACING UNIT: N/2 NW/4 & N/2 NE/4, SEC 19, T5N, R65W; & S/2 SW/4 & S/2 SE/4, SEC 18, T5N, R65W UNIT ACREAGE: 320

WELL NAME	SURFACE LOCATION				BEGIN HORIZONTAL COMPLETION ZONE				END HORIZONTAL COMPLETION ZONE			
	DIST.	DIR.	DIST.	DIR.	DIST.	DIR.	DIST.	DIR.	DIST.	DIR.	DIST.	DIR.
GP-HILLSIDE 1-18-18	526'	FNL	1305'	FEL	330'	FSL	460'	FEL	330'	FSL	460'	FWL
GP-HILLSIDE 2-19-19	538'	FNL	1305'	FEL	0'	FSL	460'	FEL	0'	FSL	460'	FWL
GP-HILLSIDE C1-19-19	544'	FNL	1305'	FEL	169'	FNL	460'	FEL	180'	FNL	460'	FWL
GP-HILLSIDE 3-19-19	550'	FNL	1305'	FEL	338'	FNL	460'	FEL	349'	FNL	460'	FWL



4715 Innovation Drive 970.226.0342 | P  
 Fort Collins, CO 80525 970.226.0879 | F  
[www.LRA-Inc.com](http://www.LRA-Inc.com)

Proposed Spacing Unit Exhibit  
 Greeley Directional Project  
 Hillside

#### LEGEND

- ⊙ ALIQUOT CORNER
- ⊕ BOTTOM HOLE
- △ COMPUTED ALIQUOT CORNER
- COMPUTED FROM GLO RECORDS

drawn by KJW	date 7/24/14	cogcc id 332837	project - task number 0211012.04	book and page
path/filename P:\_Engineering\0211012.04\DRAWINGS\EXHIBITS\0211012-04PSUE-6.dwg				

surface - location  
 NE/4, NE/4 SEC 20 T5N R65W

SECTION LINE  
 QUARTER SECTION LINE  
 SIXTEENTH LINE