



DDC

**RM-141014**

1":100' - TVD

10/8/2014 2:21:19 AM

**Oper. Company:** Noble Energy**Country:** United States**State / Province:** Colorado**County / Parish:** Weld**Started:** 10/04/2014 07:00 AM**API/UWI:** 05-123-37631**Field:** Wildcat**Well:** Rohn State LD10-66HN**Rig:** H&P 326**Ended:** 10/08/2014 12:46 AM**Personnel****Day Hand:** Chris Abbott**Night Hand:** Worth Barham**Comp. Emp:** DDC**Location****Latitude:** 40° 45' 25.850 N**Longitude:** 103° 51' 42.040 W**Elev. GL:** 4,279'**Elev. DF:****Elev. KB:** 4,309'**Hole Data**

Size	From	To
13.75	0	1220
8.75	1220	6112
6.125	6112	9544

**Casing Data**

Size	From	To
9.625	0	1220
7.0	1220	6112
4.5	6112	9544

**Bit Sizes**

Size	From	To
13.75	0	1220
8.75	1220	6122
6.125	6122	9544

**Mud Data**

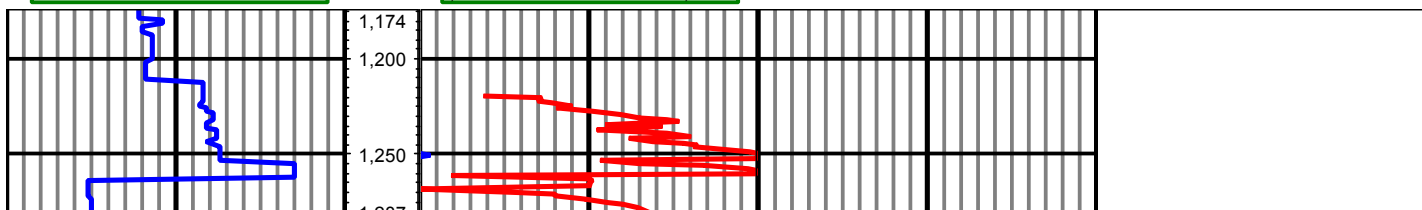
Type	Weight	Density	Viscosity	Rm	Rmf	Rmc	From	To
LSND	10.1		37				1220	6122
LSND	10.45		42				6122	0
LSND	10.1		38				6122	9544

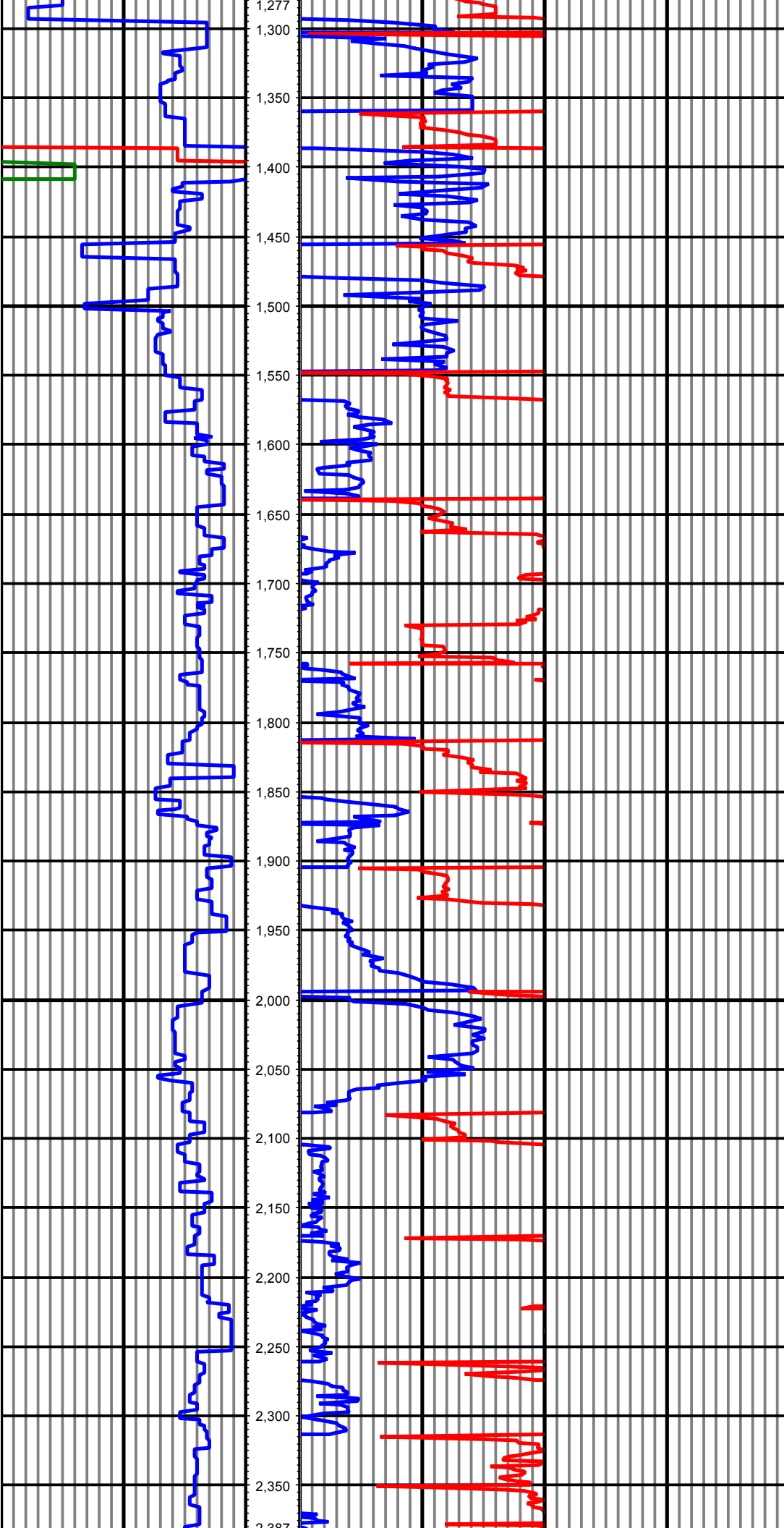
**Tool Run Data**

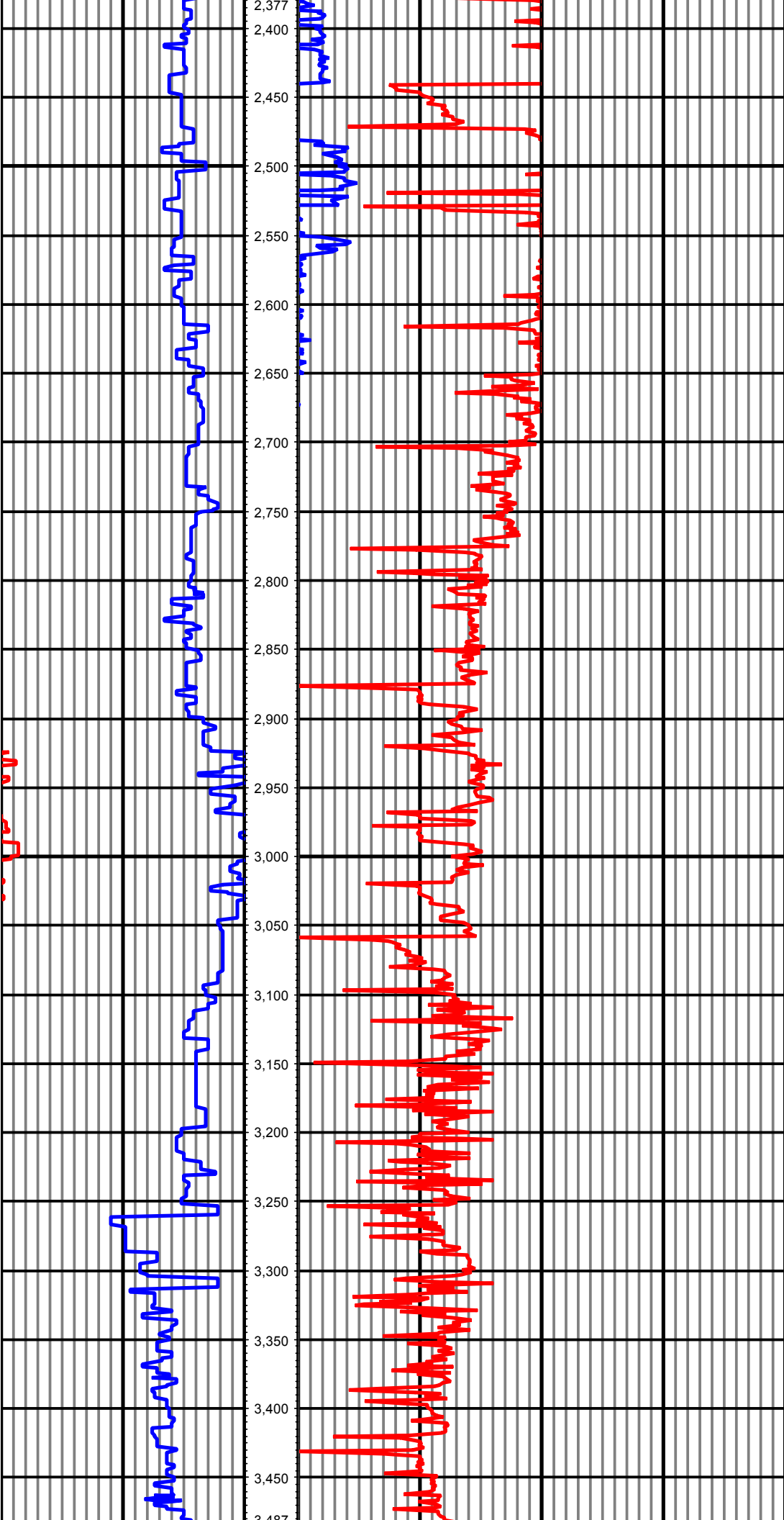
Serial Number	Gamma Offset	Resist. Offset	Start Time	Start Depth	End Time	End Depth
0042Q	45	0	10/4/2014 7:00:00 AM	1220	10/7/2014 10:51:00 PM	6122
0042Q	51	0	10/4/2014 7:00:16 PM	6122	10/8/2014 12:46:16 AM	9544

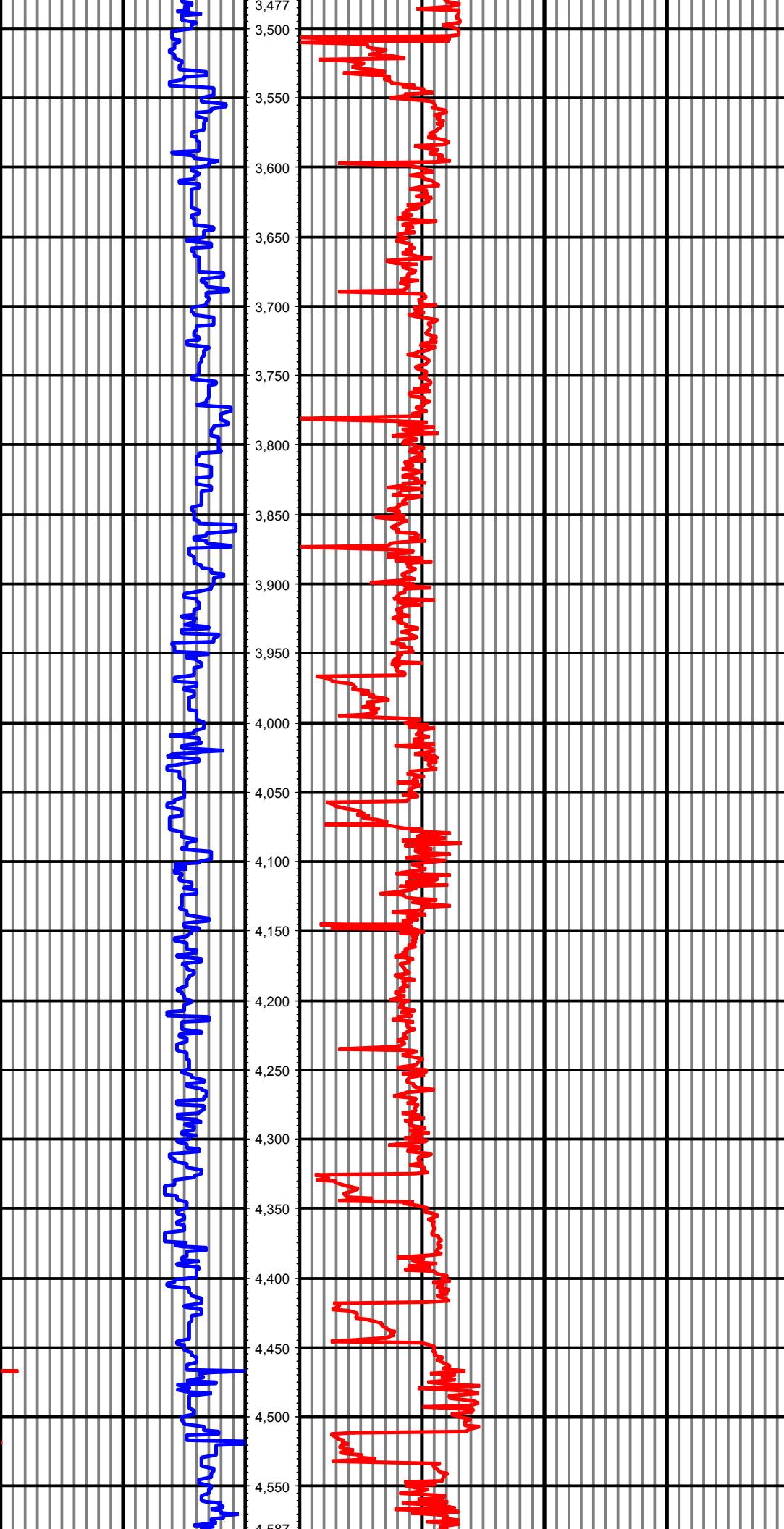
All interpretations are opinions based on inferences from electrical or other measurements and we cannot and do not guarantee the accuracy or correctness of any interpretation, and we shall not except in the case of gross or willful negligence on our part, be liable or responsible for any loss, cost damages or expenses incurred or sustained by anyone resulting from an interpretation made by any of our officers, agents, or employees.

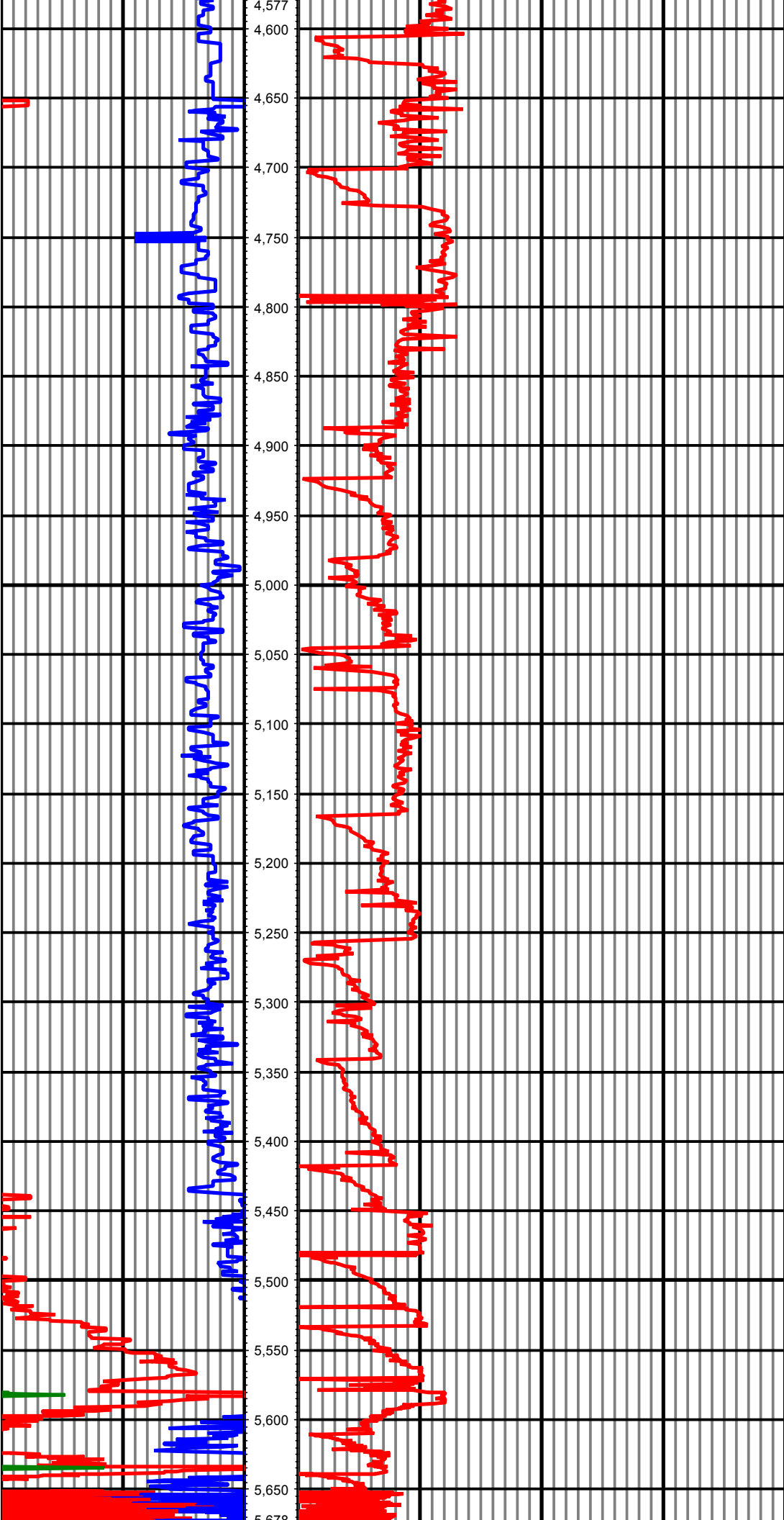
0.00	GR(API)	100.00	TVD	0.00	ROP(FT/HR)	1,000.00
100.00	2	200.00	FT	1,000.00	2	2,000.00
200.00	3	300.00		2,000.00	3	3,000.00











0.00	GR(API)	100.00	TVD	0.00	ROP(FT/HR)	1,000.00
100.00	2	200.00	FT	1,000.00	2	2,000.00
200.00	3	300.00		2,000.00	3	3,000.00