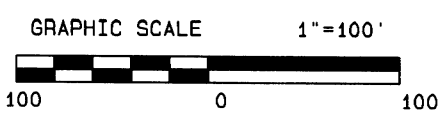
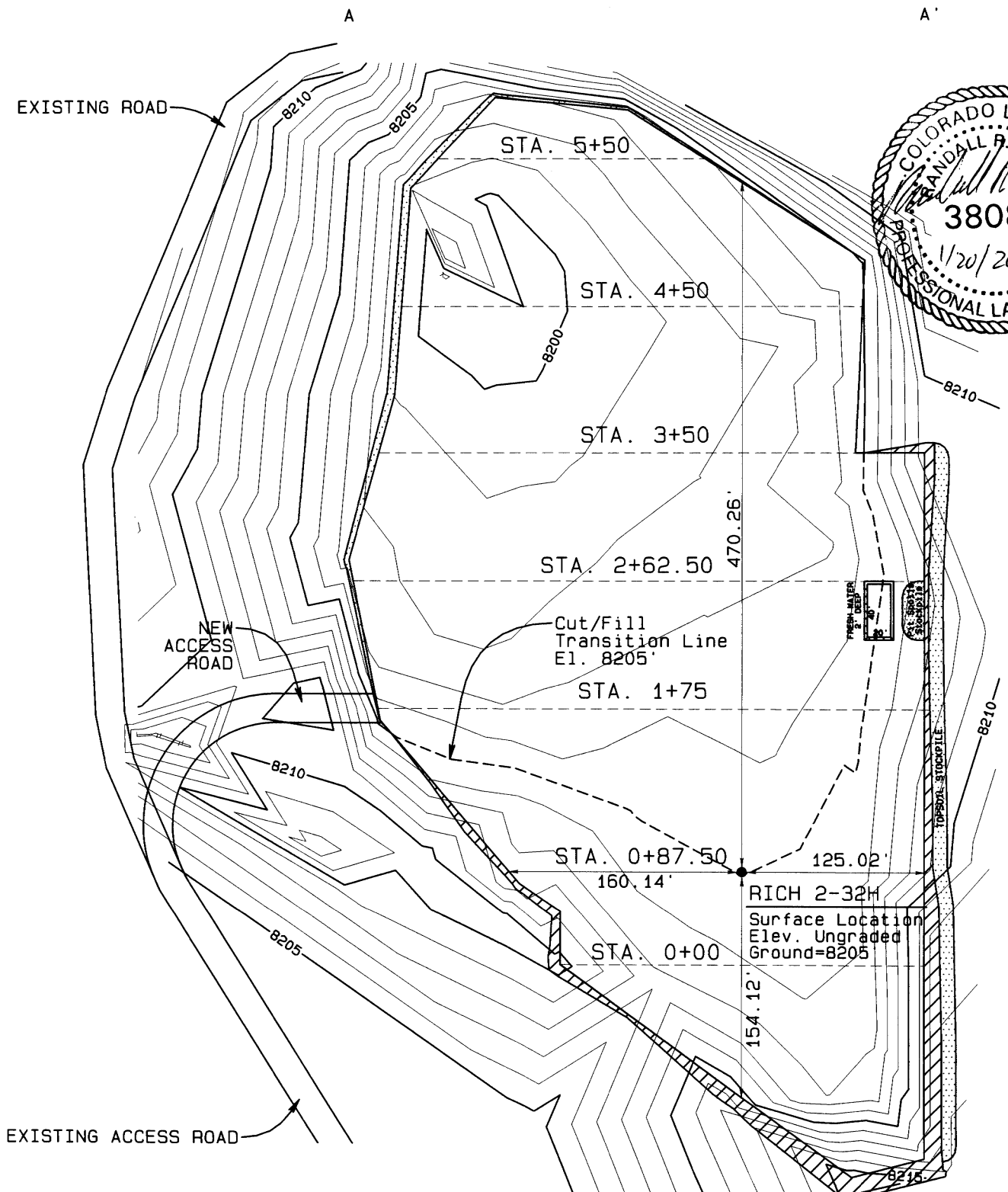
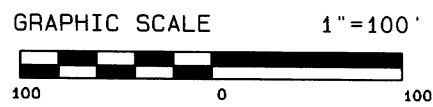
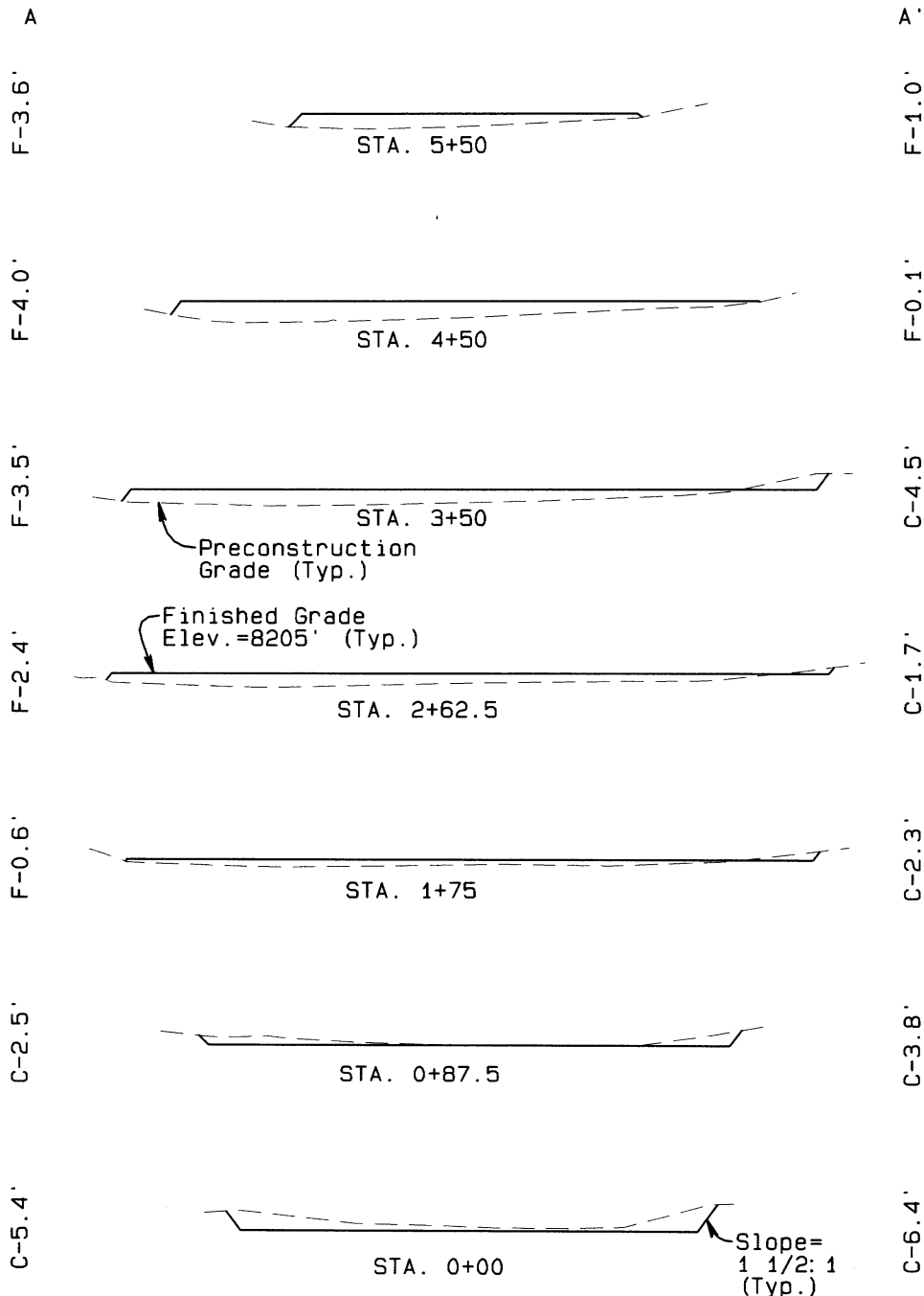


EE3 LLC
 CONSTRUCTION LAYOUT
 RICH 2-32H
 SECTION 32, T7N, R80W, 6th P.M.
 750' FSL, 2340' FEL



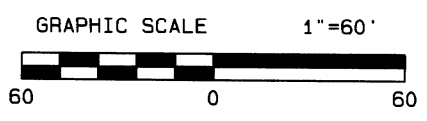
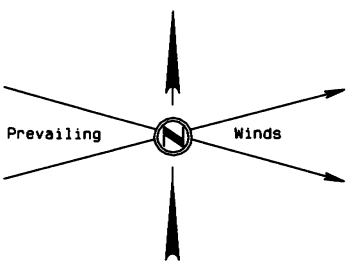
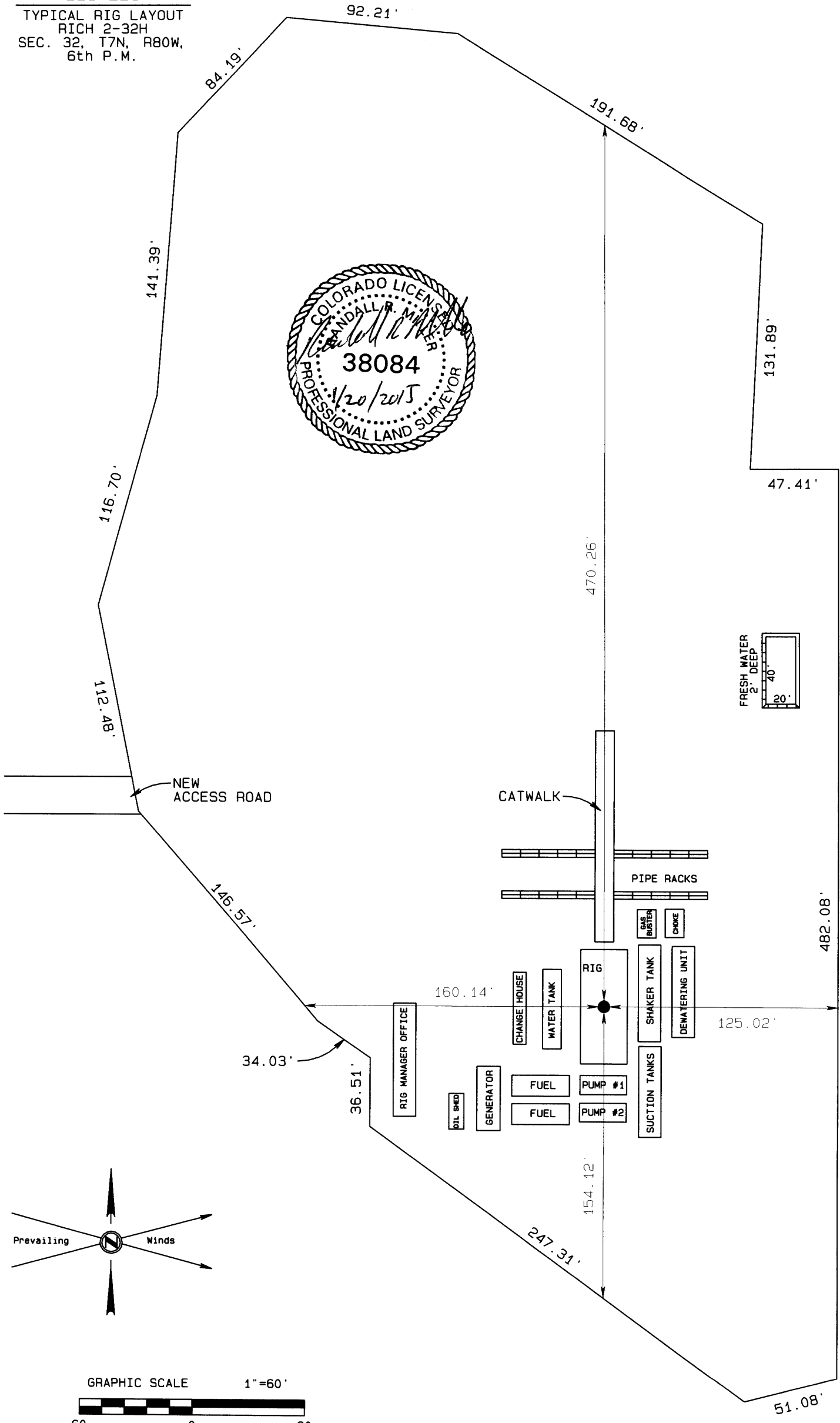
Final Pad Elevation=8205'
 Elev. Ungraded Ground at
 RICH 2-32H Location Stake=8205'

EE3 LLC
 CONSTRUCTION LAYOUT CROSS SECTION
 RICH 2-32H
 SECTION 32, T7N, R80W, 6th P.M.

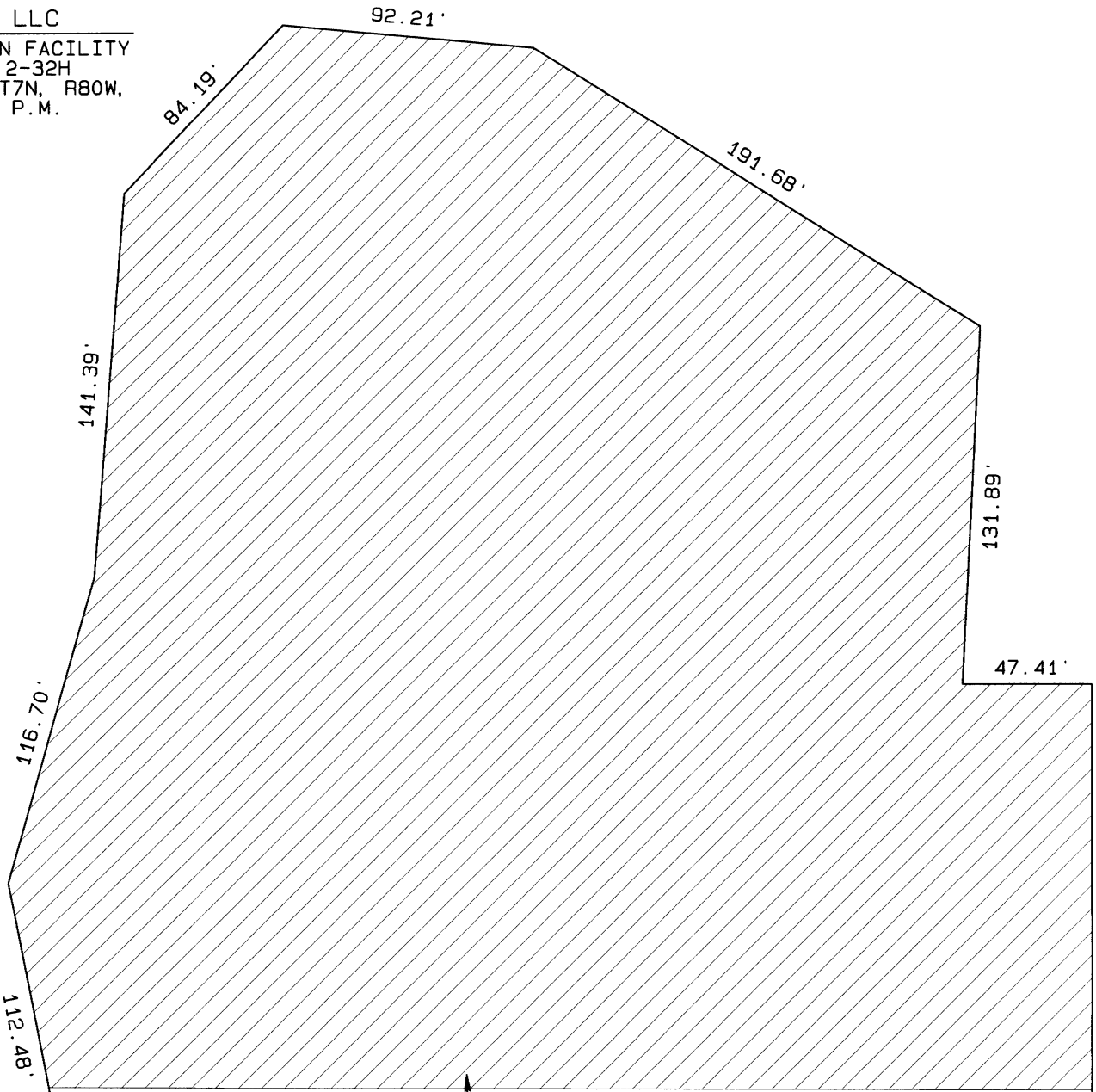


Vertical Exaggeration = 2 Times
 Elev. Ungraded Ground at RICH 2-32H Location Stake=8205'

EE3 LLC
 TYPICAL RIG LAYOUT
 RICH 2-32H
 SEC. 32, T7N, R80W,
 6th P.M.



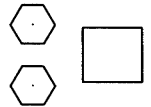
EE3 LLC
PRODUCTION FACILITY
RICH 2-32H
SEC. 32, T7N, R80W,
6th P.M.



RECLAMATION AREA
2.80 Ac.

NEW
ACCESS ROAD

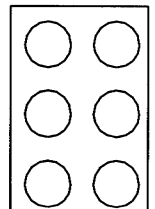
Meter/Flare Stack



Treaters



RICH 2-32H
Well Head



Single Product
Tanks:
4 Oil
2 Water

146.57'

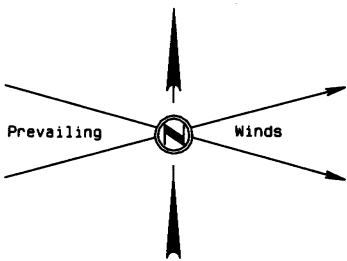
34.03'

36.51'

247.31'

51.08'

482.08'



GRAPHIC SCALE 1"=60'

