

CEMENT BOND LOG (CBL-M)

<<< Fold Here >>>	8
HALLIBURTON DOES NOT GUARANTEE THE ACCURACY OF ANY INTERPRETATION OF THE LOG DATA, CONVERSION OF LOG DATA TO PHYSICAL ROCK PARAMETERS OR RECOMMENDATIONS WHICH MAY BE GIVEN BY HALLIBURTON PERSONNEL, OR WHICH APPEAR ON THE LOG OR IN ANY OTHER FORM. ANY USER OF SUCH DATA, INTERPRETATIONS, CONVERSIONS, OR RECOMMENDATIONS AGREES THAT HALLIBURTON IS NOT RESPONSIBLE EXCEPT WHERE DUE TO GROSS NEGLIGENCE OR WILLFUL MISCONDUCT, FOR ANY LOSS, DAMAGES, OR EXPENSES RESULTING FROM THE USE THEREOF.	
Comments	
TOOLS WERE RAN IN 7.0" 26# CASING	
CAST-M RAN IN CIM 72 SHOTS 4 SPF	
LOG CORRELATED TO LINER TOP DEPTH AT CUSTOMER REQUEST	
YOUR CREW: E. FRIEDLAND, R. MEROLA, M. MEYER	
THANK YOU FOR CHOOSING HALLIBURTON ENERGY SERVICES	

Service Ticket No.	901937550	API No.	051233913000	PGM Ver	8.0
The Well Name, Location, Borehole Description, and / or Cementing Data Furnished by Client					
EQUIPMENT DATA					
GAMMA		CBL		CAST	
Run No.	ONE	Run No.	ONE	Run No.	ONE
Serial No.	14878	Serial No.	12253831	Serial No.	11488892
Model No.	TTTCU-002	Model No.	CBL-M	Model No.	CAST-M
Diameter	1.69"	Diameter	2.75"	Diameter	3.125"
LOGGING DATA					
General Data					
Pass	Depths		Well Head	Speed	Logging Run Comments
No	From	To	Pressure	Ft/Min	

No.	From	To	Pressure	Temp				
MAIN	5529	SURFACE	0	40 FPM				
Pass	Scale		Scale		Scale		Scale	
No.	L	R	L	R	L	R	L	L
MAIN	0	150	60	0				
DIRECTIONAL INFORMATION								
Maximum Deviation			deg. @		KOP			

Log Variables

DatabaseC:\ProgramData\Warrior\Data\anschutz_4-62-16-0560bh.db
Dataset field/well/run1/CAST_CBL_MAIN1/_vars_

Top - Bottom

BHSAL2	BHSAL1	POROS2	POROS1	LTH	UHSGC	RHOCF	SO
0	1	0	1	Limestone	NONE	0.25	in 0
BORSAL kppm	CASED?	BHTEMP_Src	MSGGN	USERFTT usec/ft	ZREF MRayl	CASEWGHT lb/ft	SRFTEMP degF
150	Yes	TEMP	1	0	1.7	26	35
MudWgt lb/gal	CASETHCK in	CASEOD in	PERFS	TDEPTH ft	BOTTEMP degF	BITSIZE in	
8.3	0.362	7	0	5529	200	8.75	

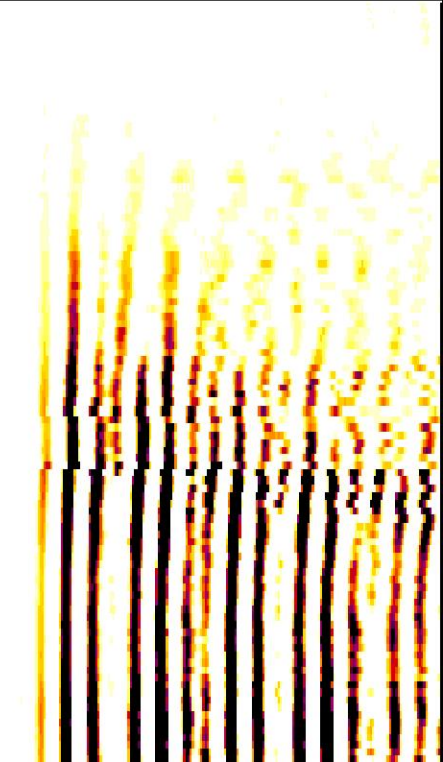
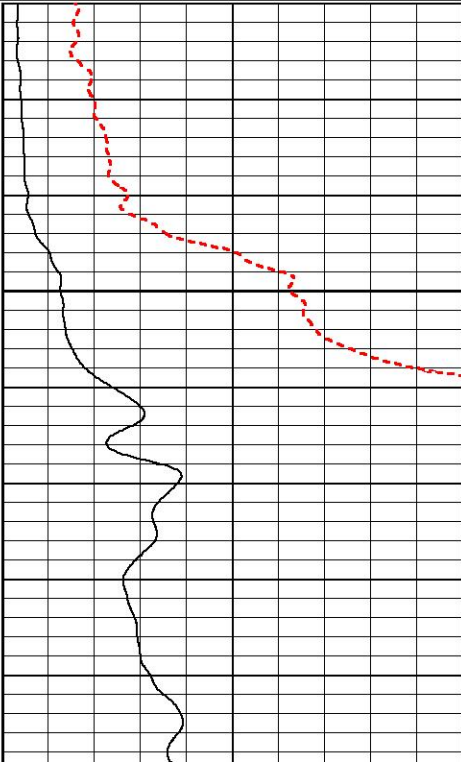
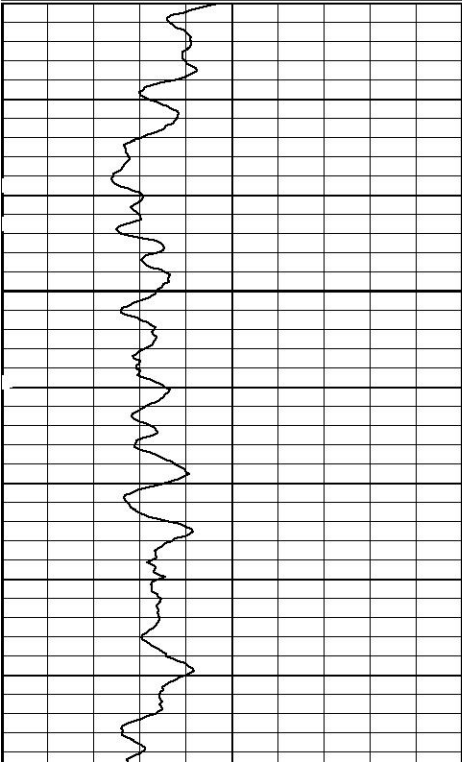
MAIN PASS

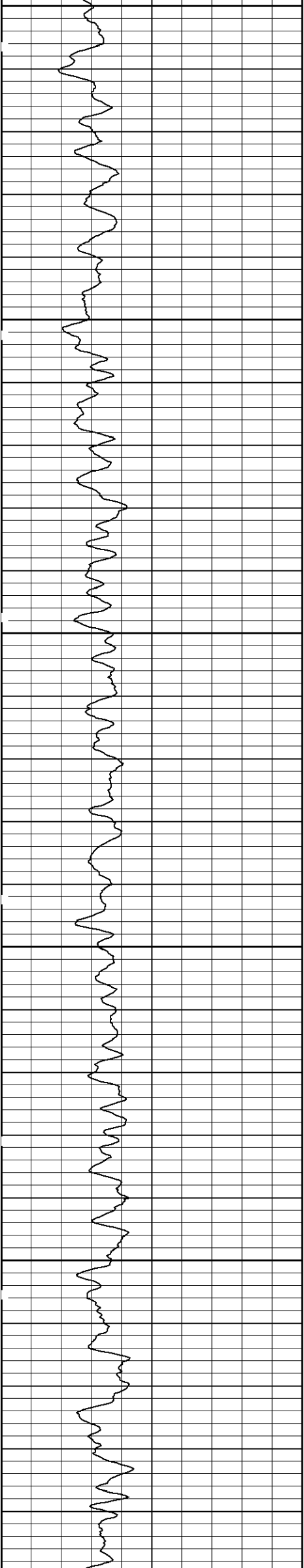
HALLIBURTON

5" = 100'

Database Fileanschutz_4-62-16-0560bh.db
Dataset PathnameCAST_CBL_SPLICE_MAIN1
Presentation Formathcbl
Dataset CreationSat Dec 20 06:14:49 2014
Charted byDepth in Feet scaled 1:240

3' Travel Time		LTEN	0	3' Amplitude (mV)	100	200	MSG	1060
200	CCL	39500	0	(lb2000	0	3' Amplitude X5 (mV)	20	500
0	Gamma Ray (GAPI)	100						

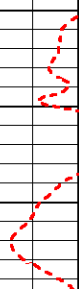
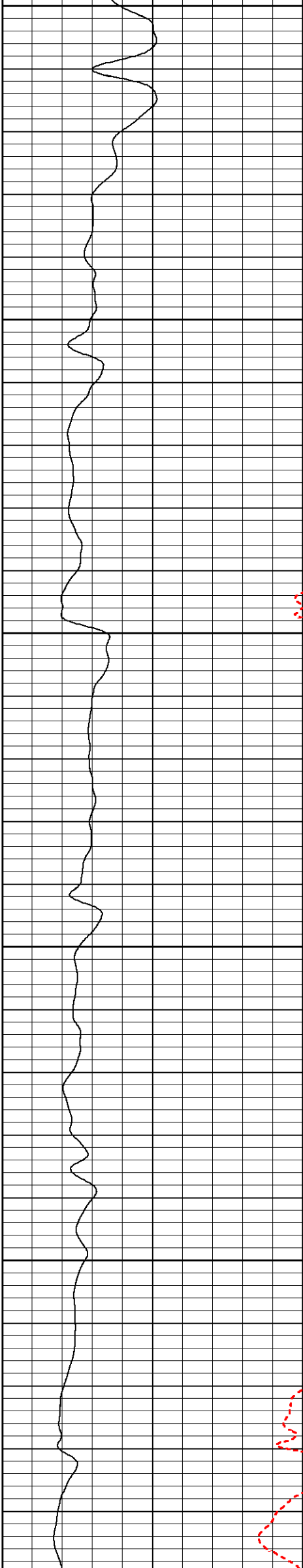


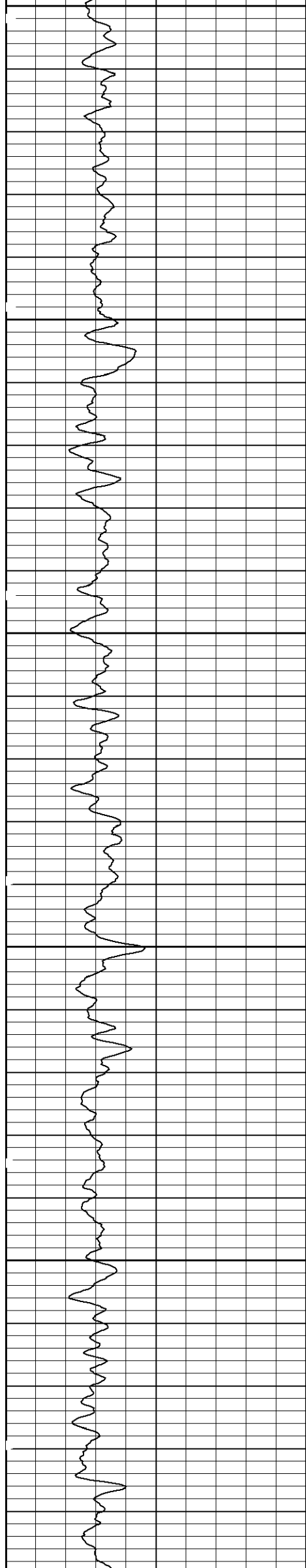


100

200

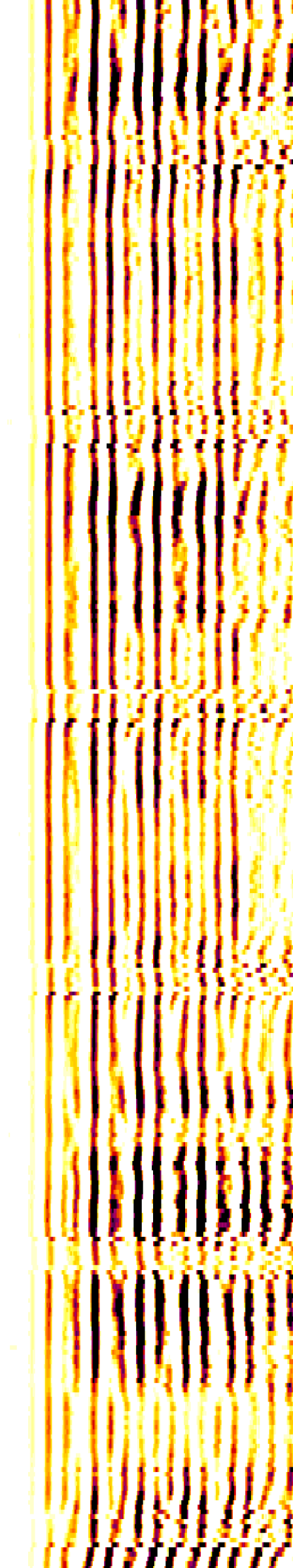
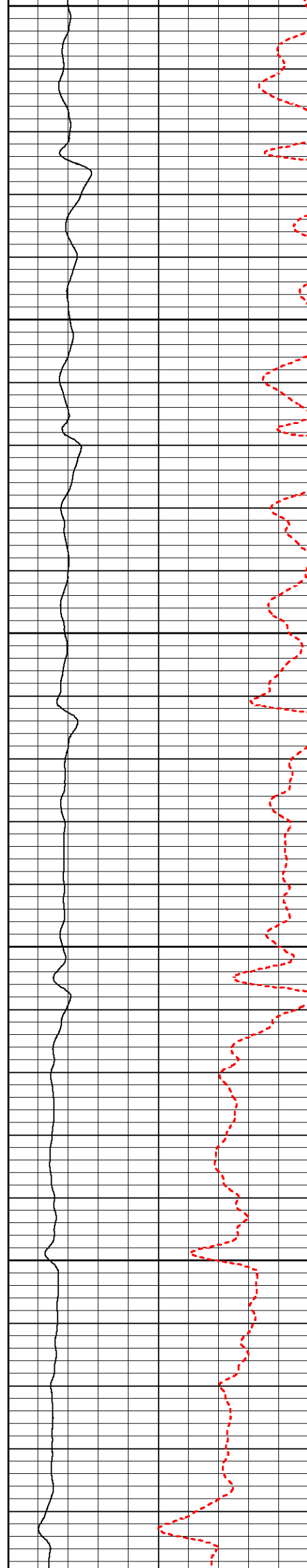
300

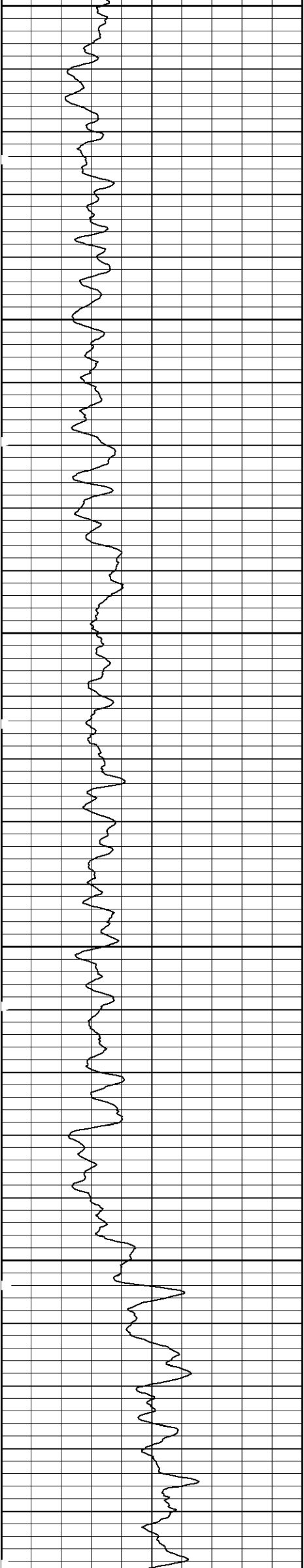




400

500

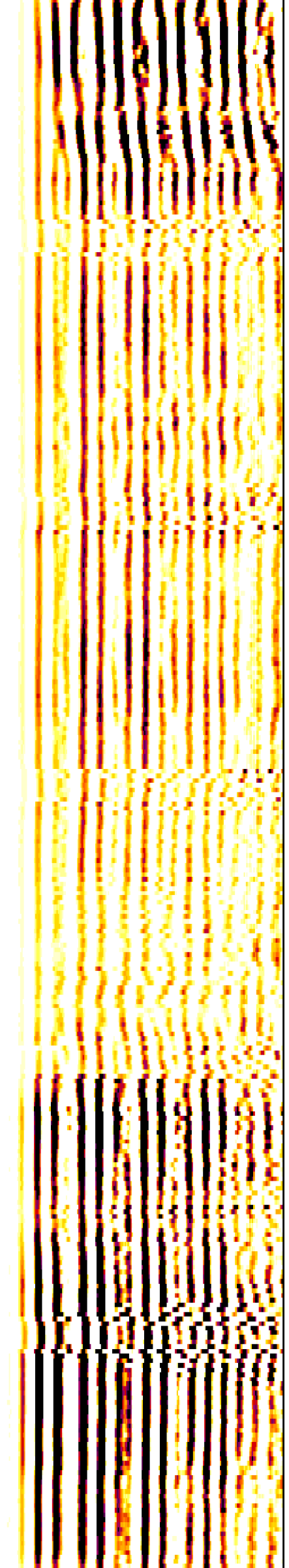
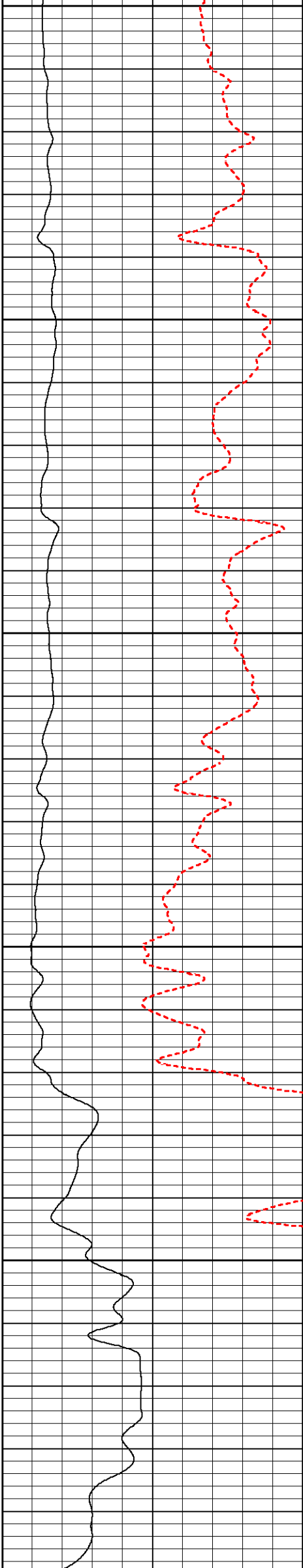


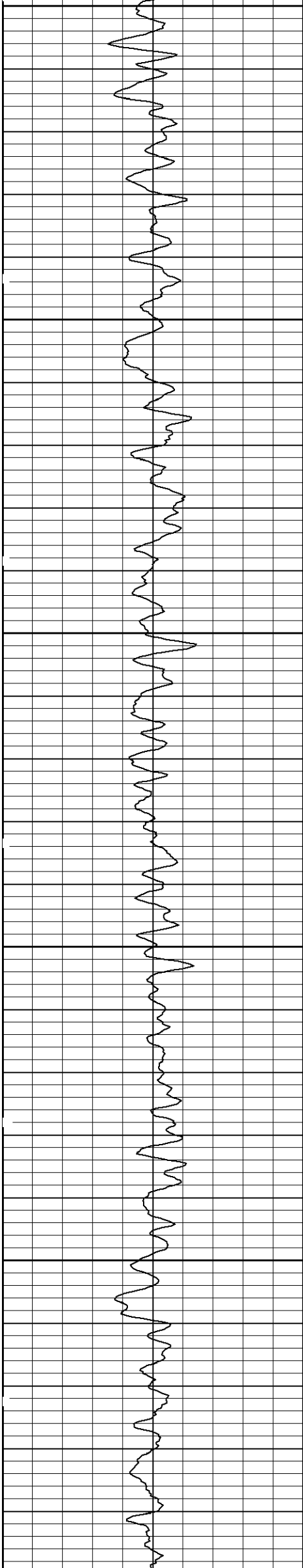


600

700

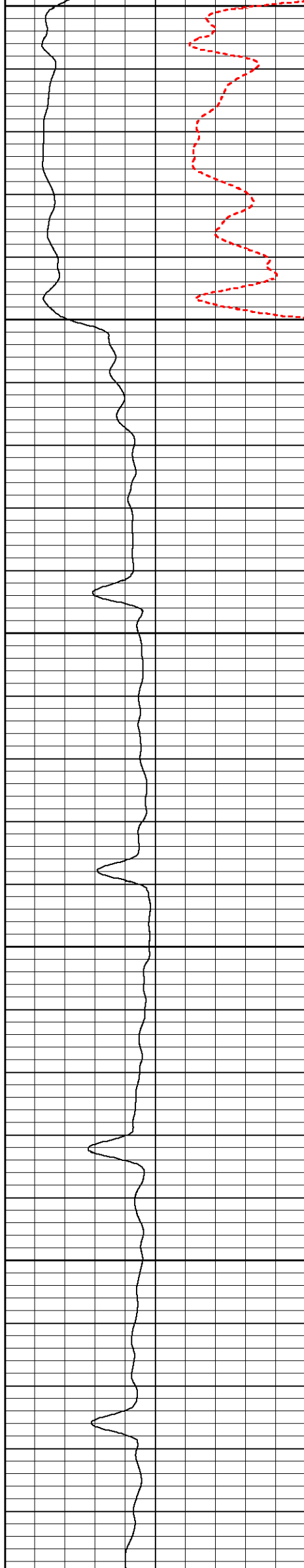
800

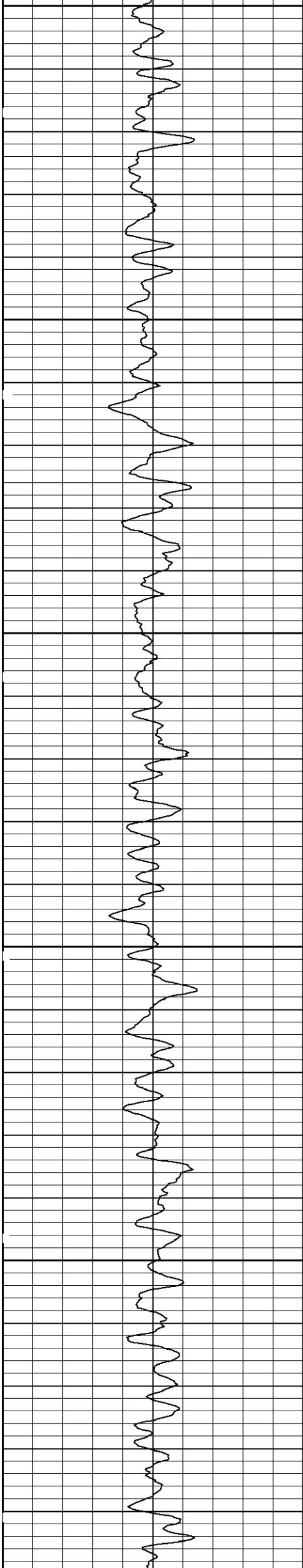




900

1000

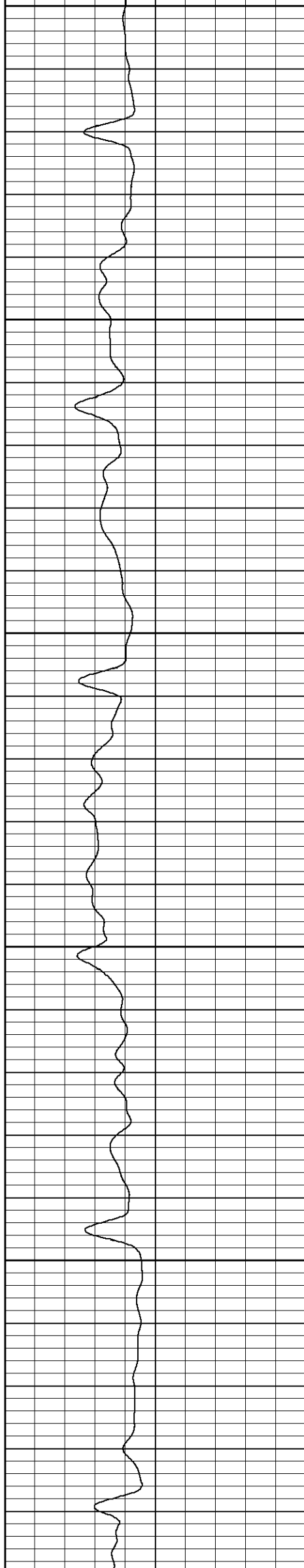


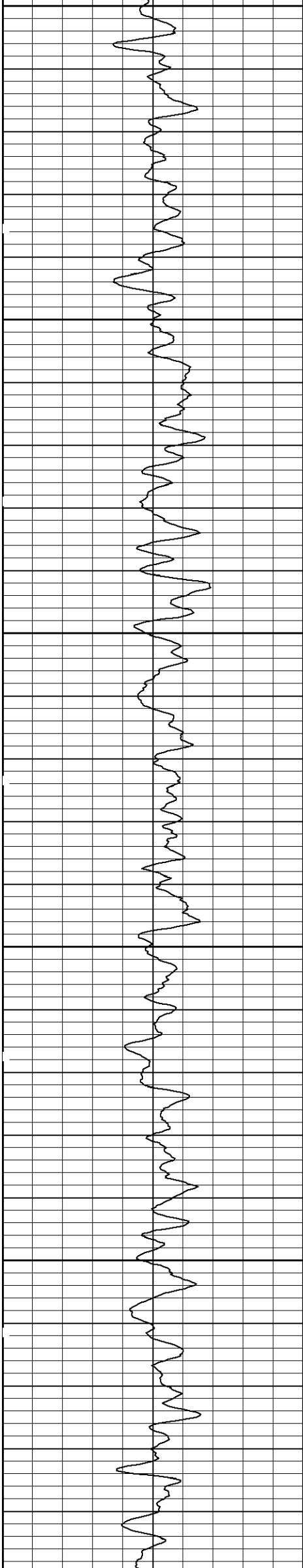


1100

1200

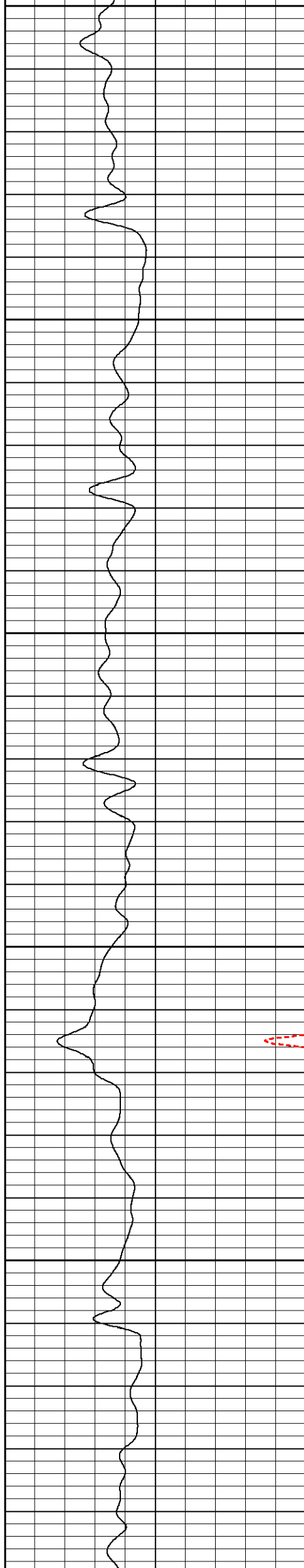
1300

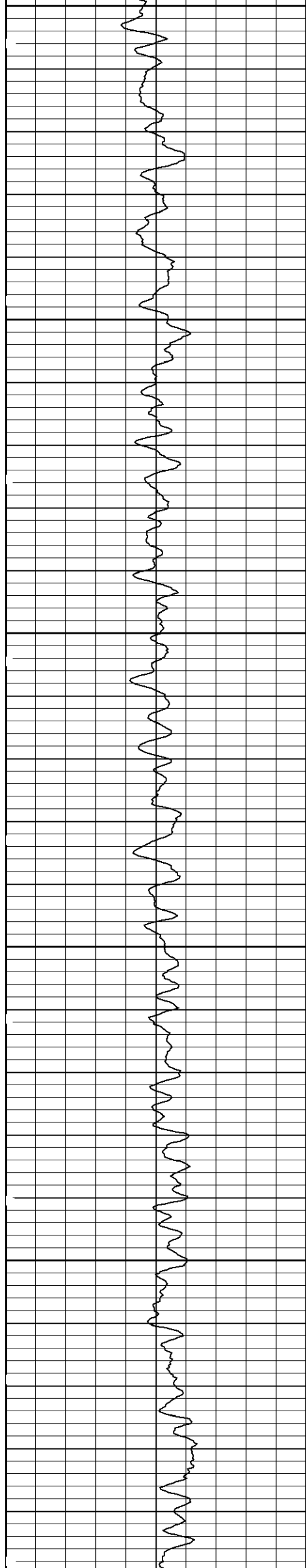




1400

1500

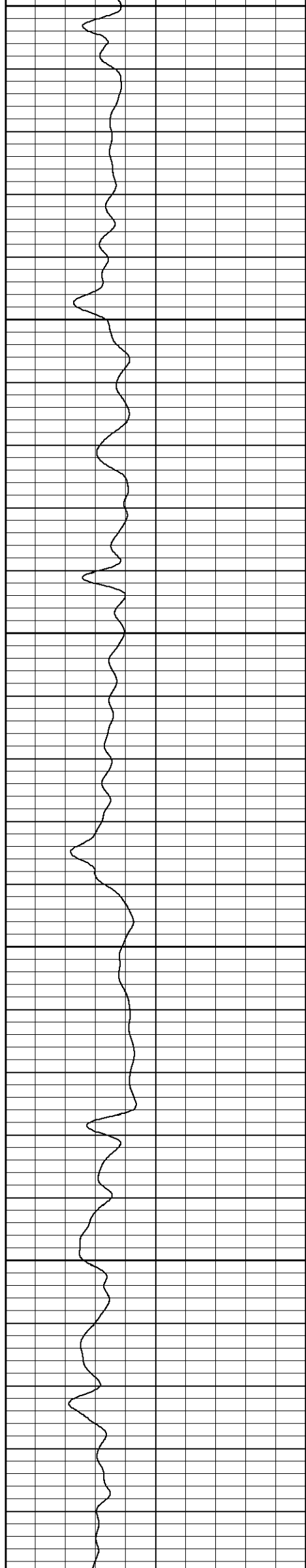


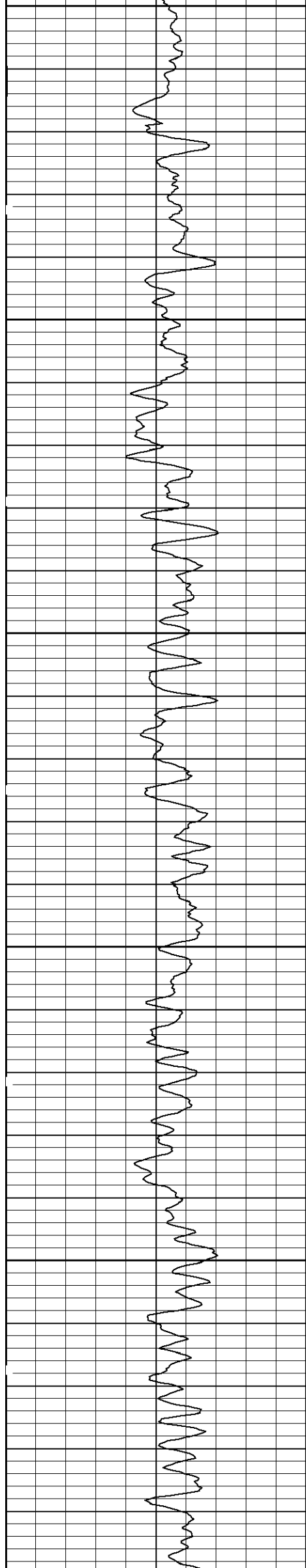


1600

1700

1800

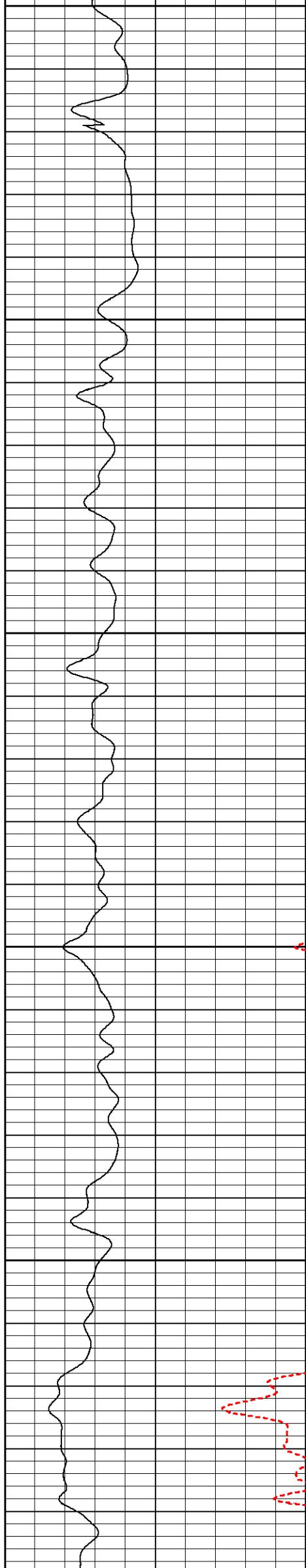




1900

2000

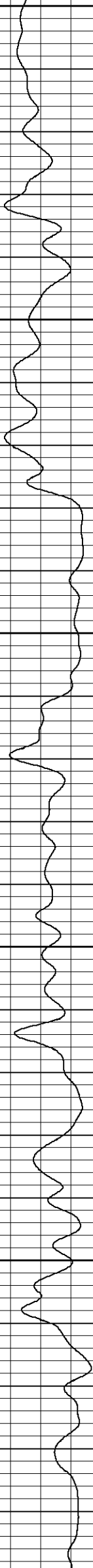
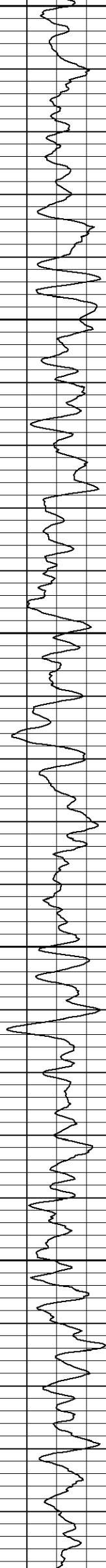
2100



2100

2200

2300

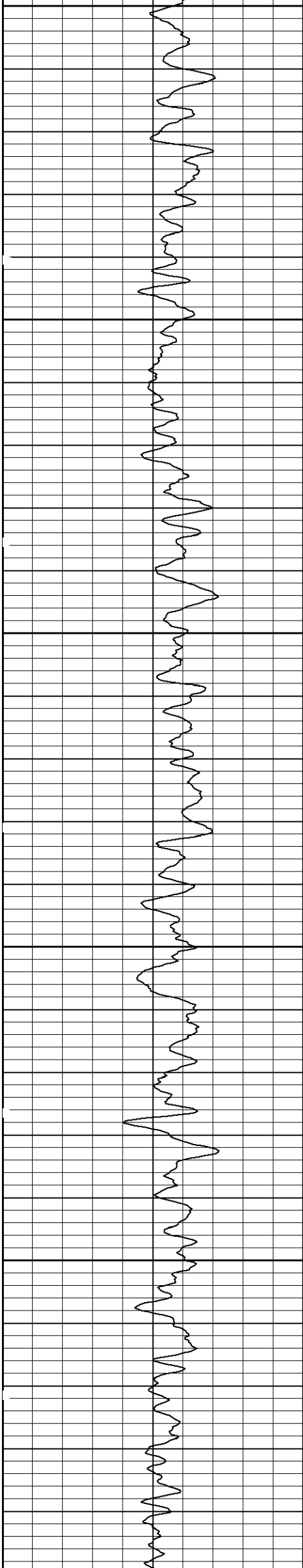


1

2

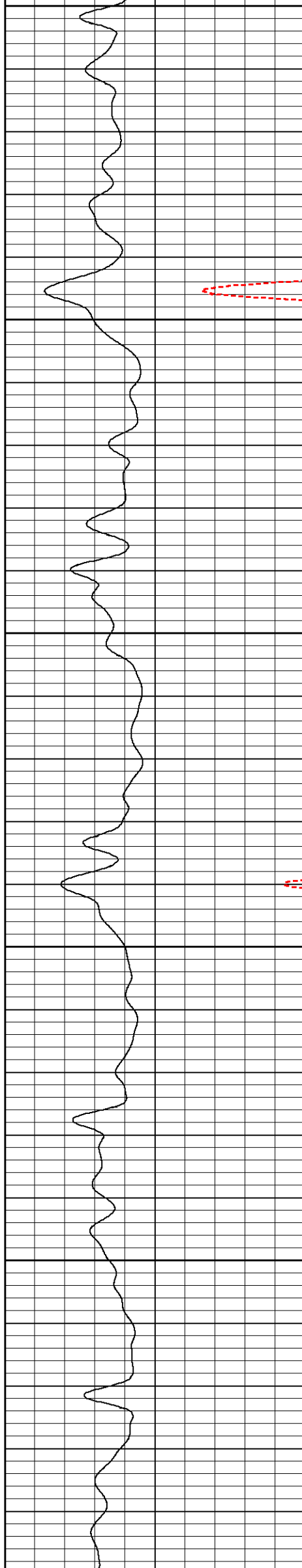
3

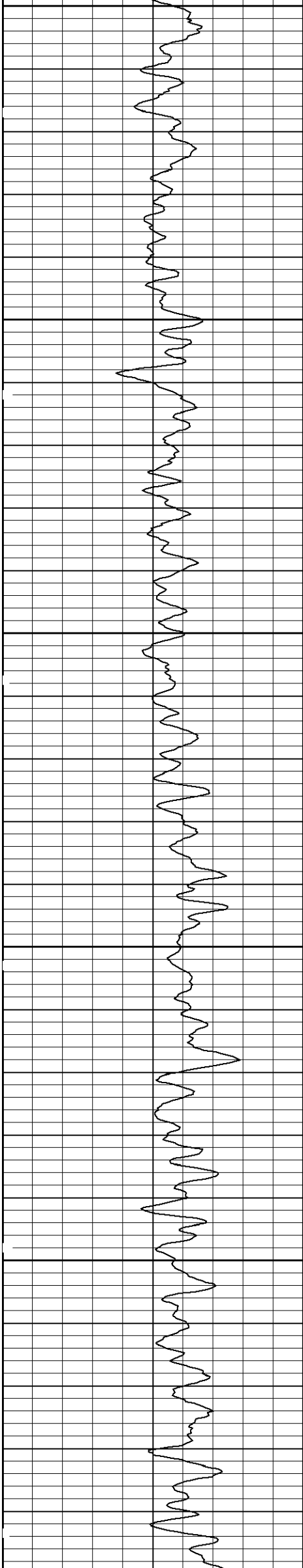




2400

2500

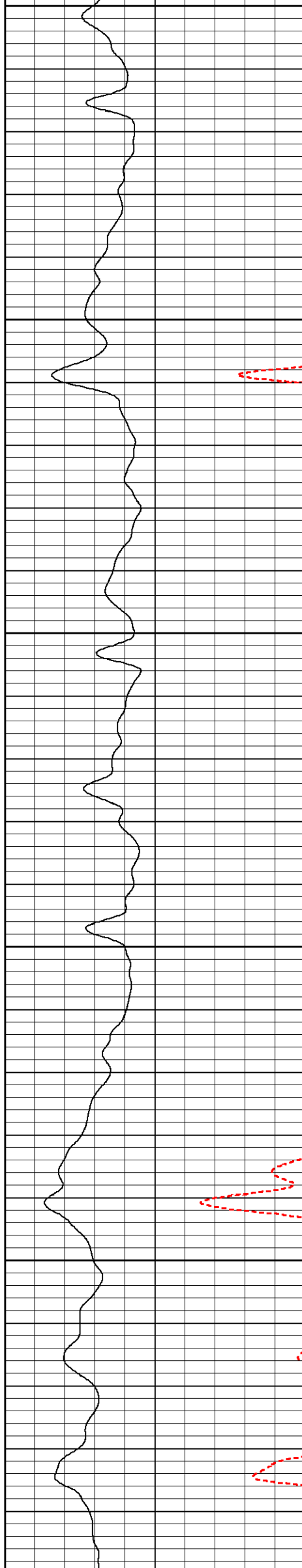


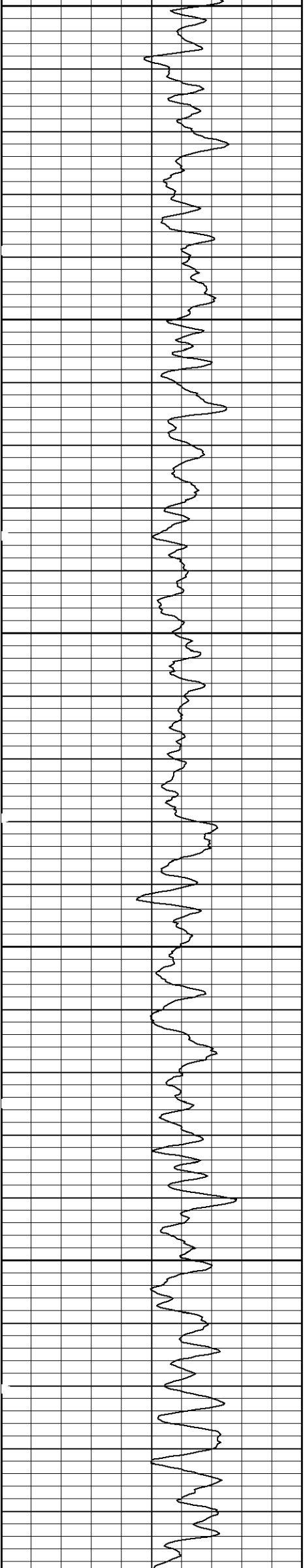


2600

2700

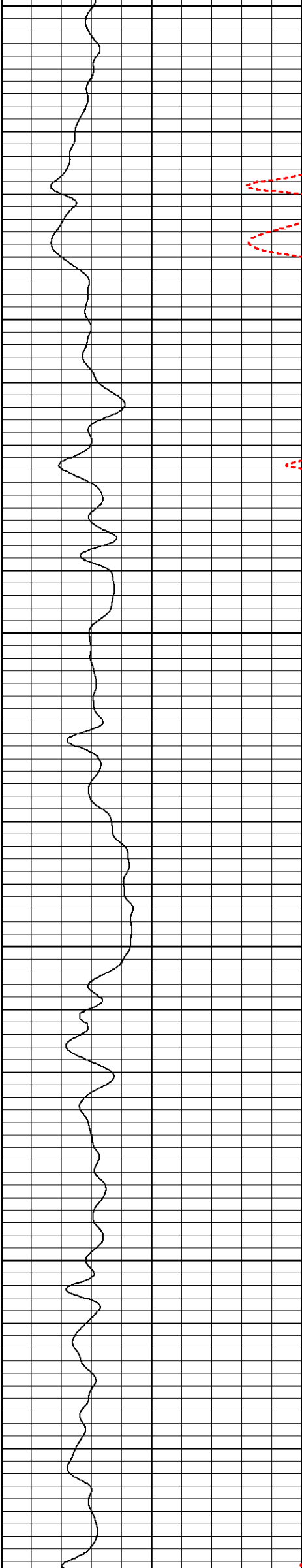
2800





2900

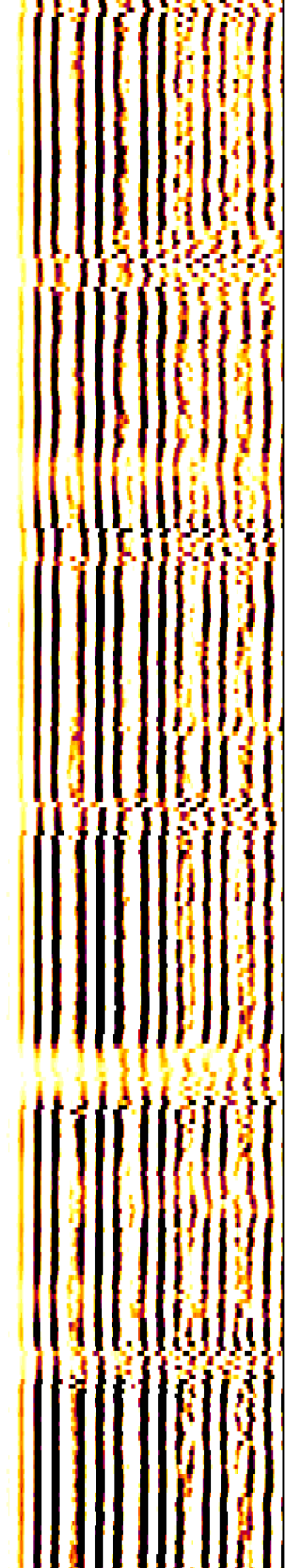
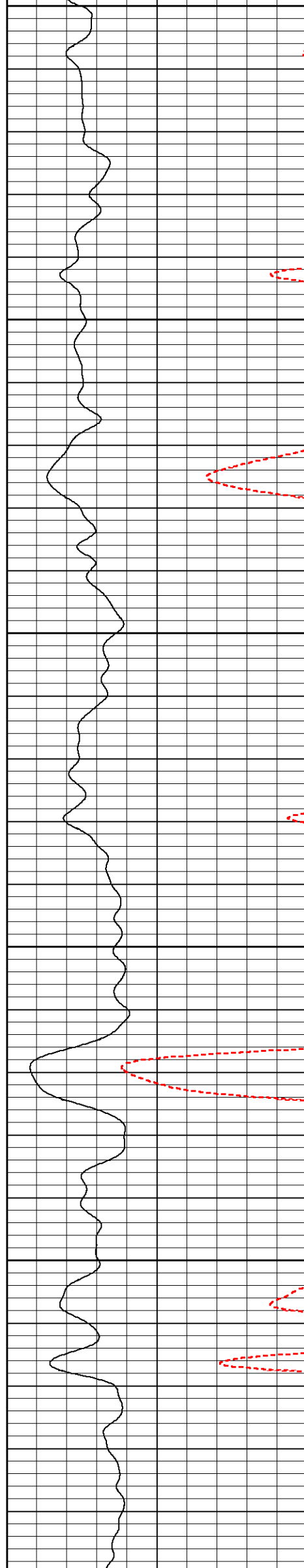
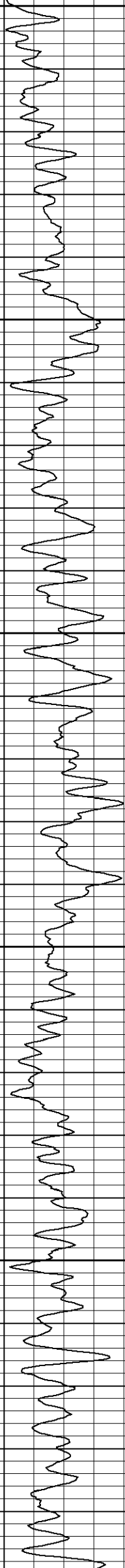
3000

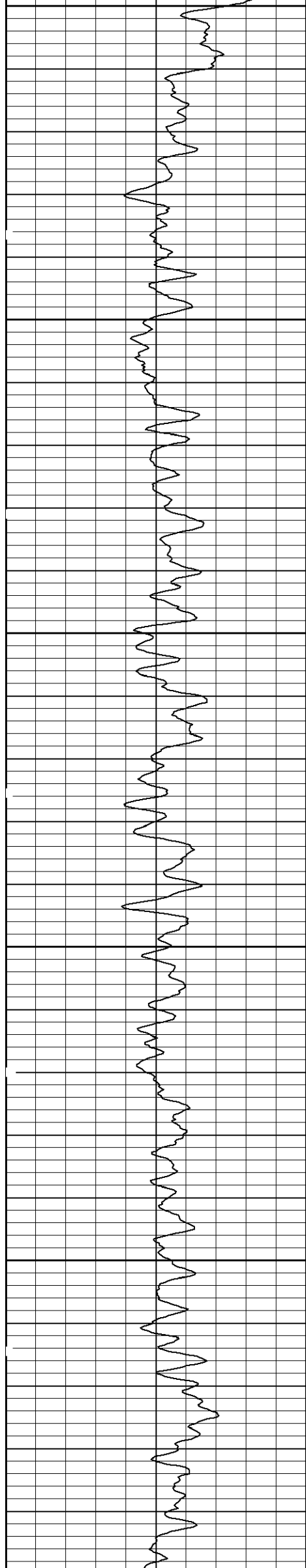


3100

3200

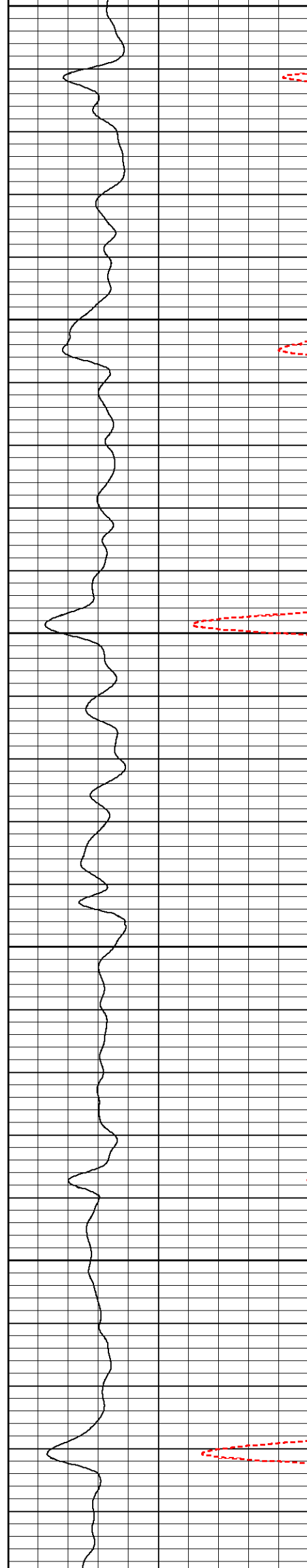
3300





3400

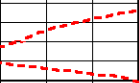
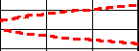
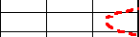
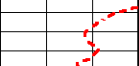
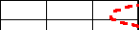
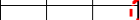
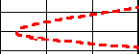
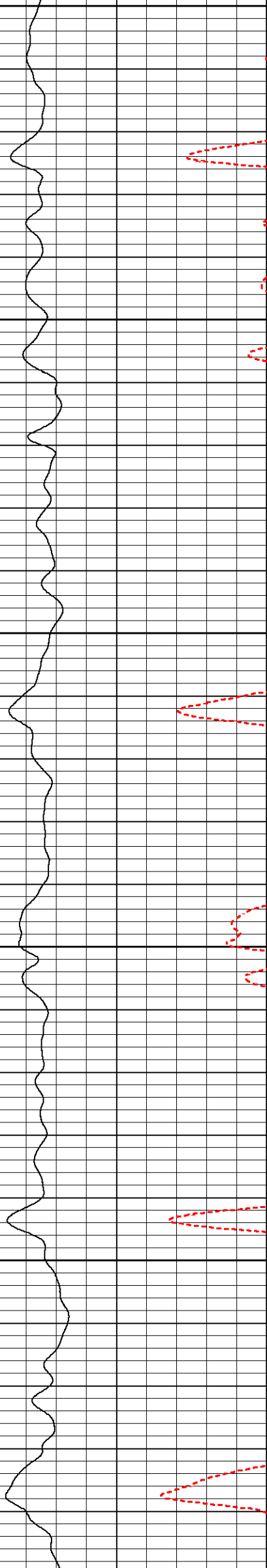
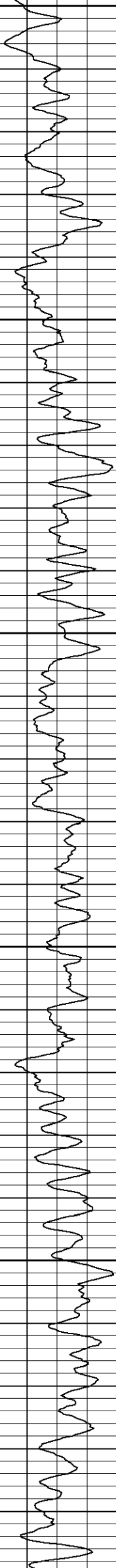
3500

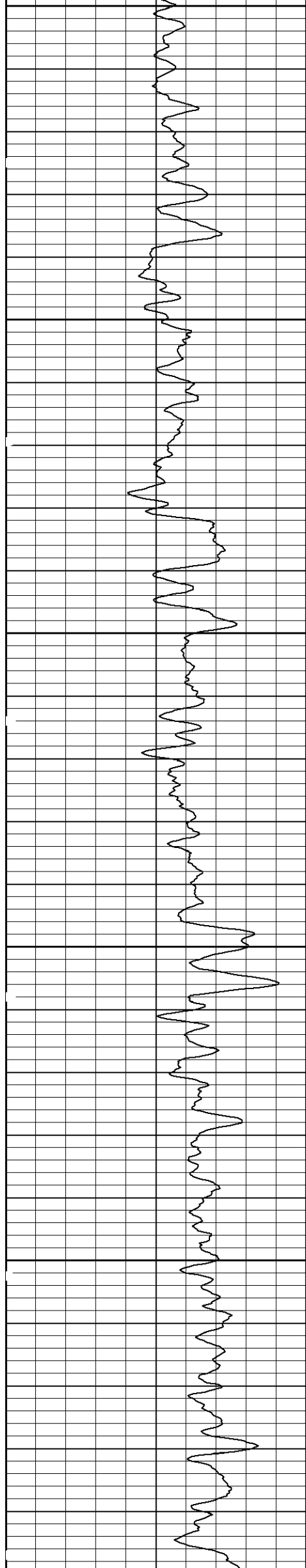


3600

3700

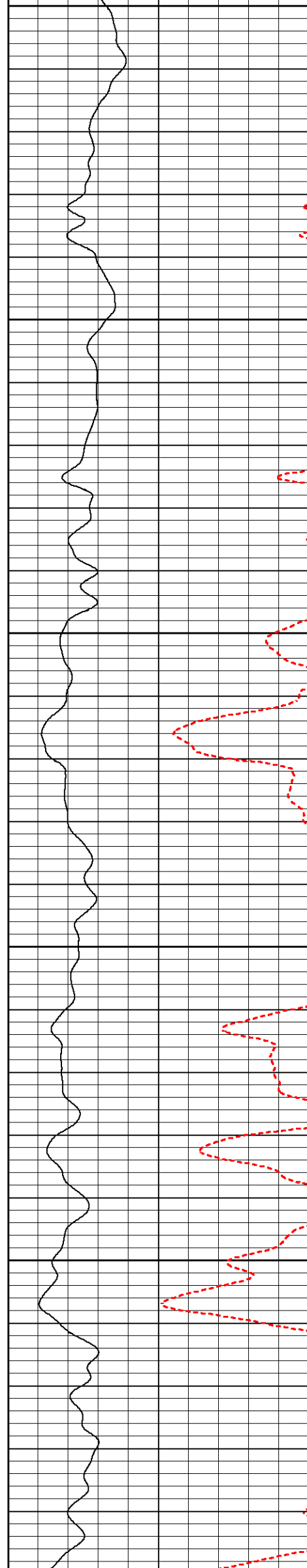
3800

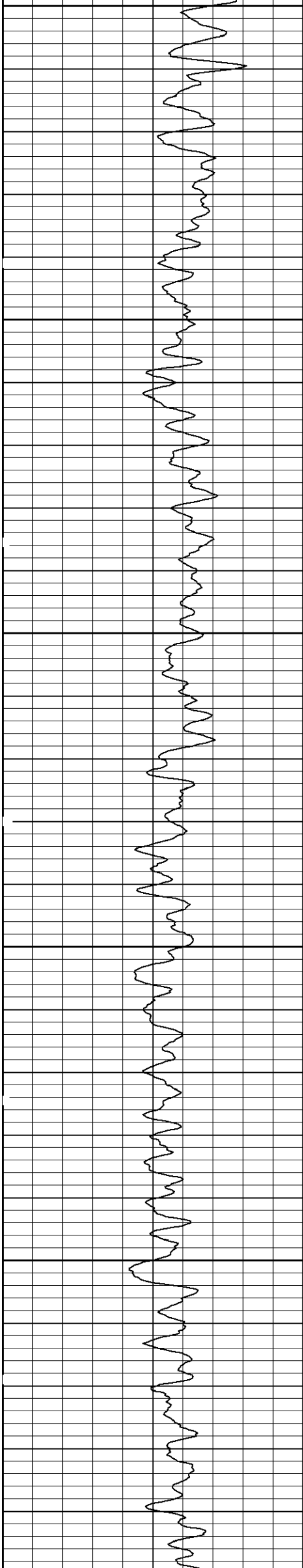




3900

4000

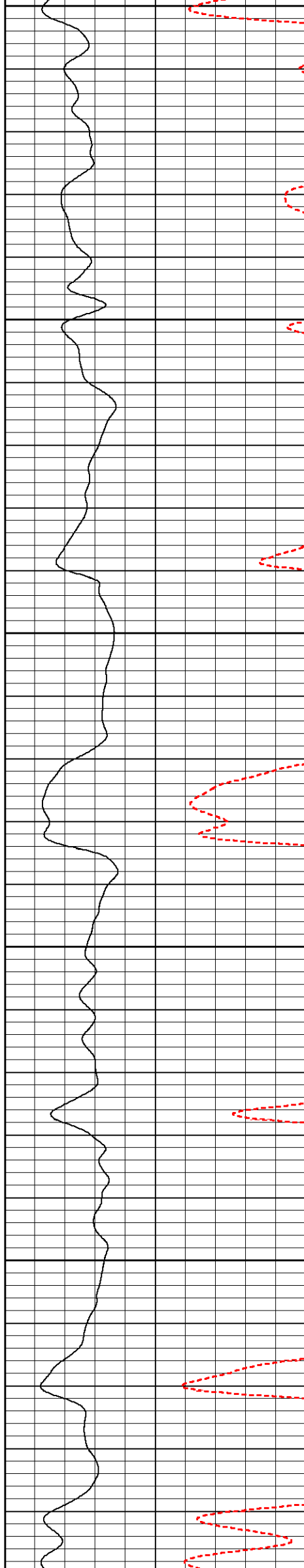


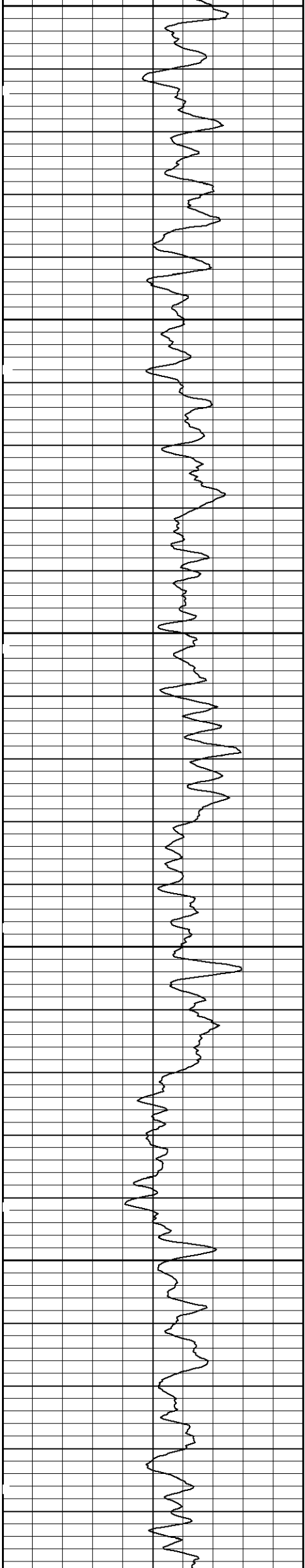


4100

4200

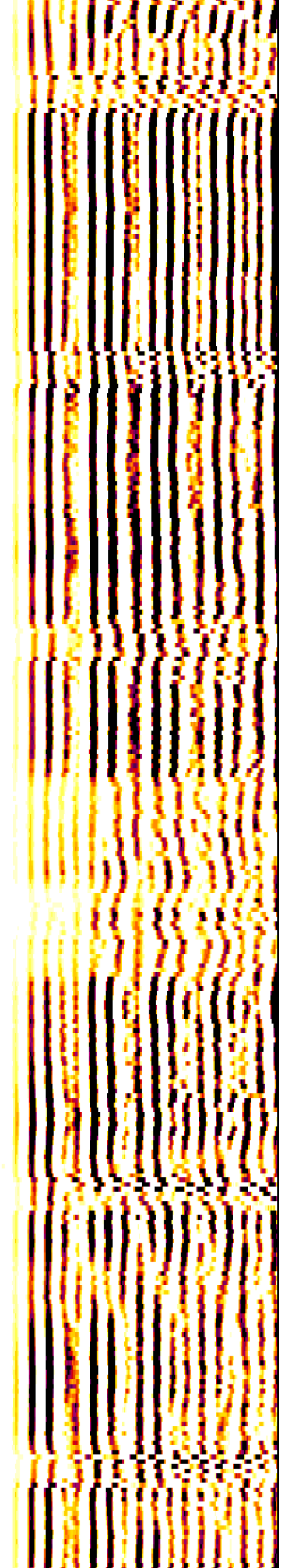
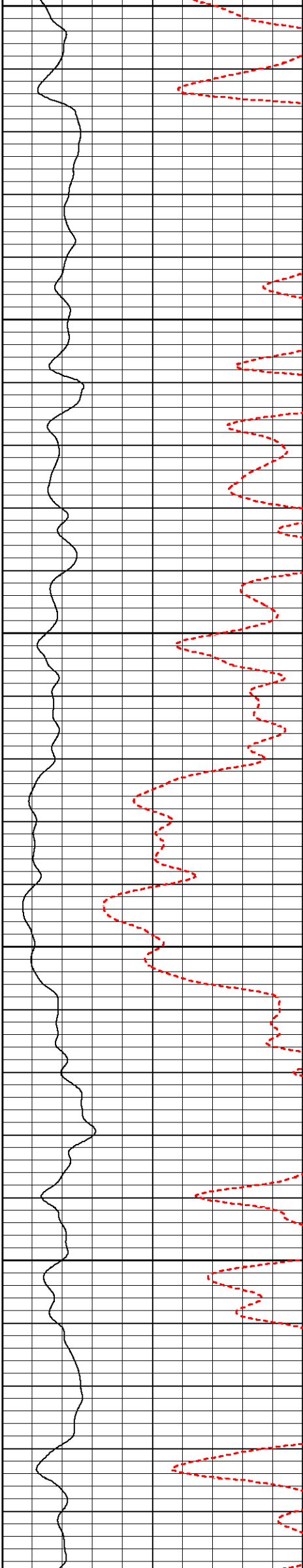
4300

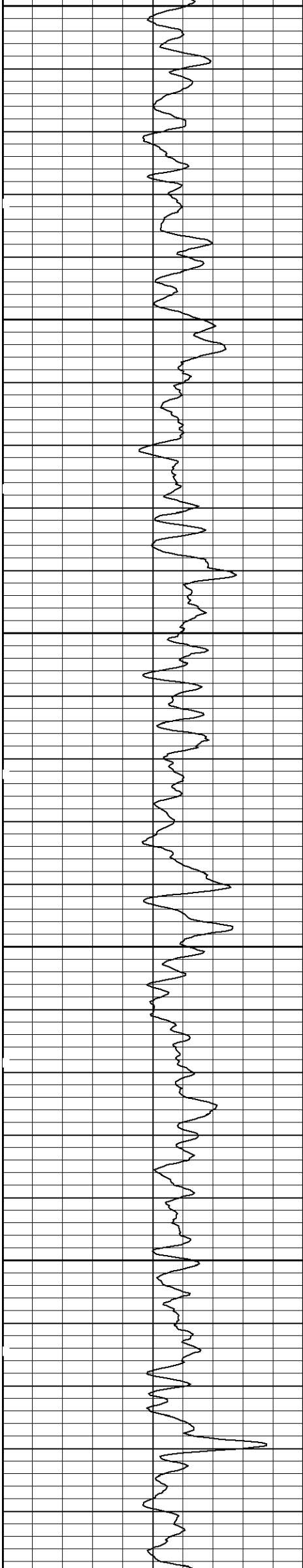




4400

4500

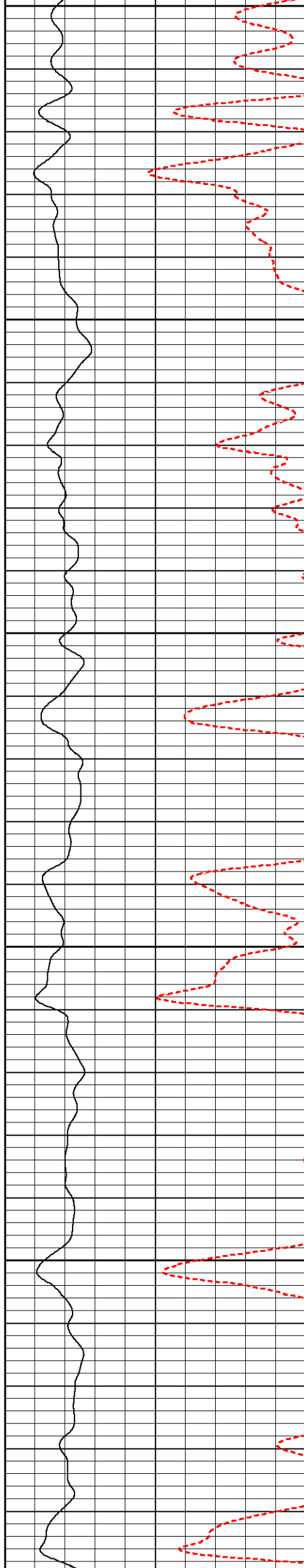


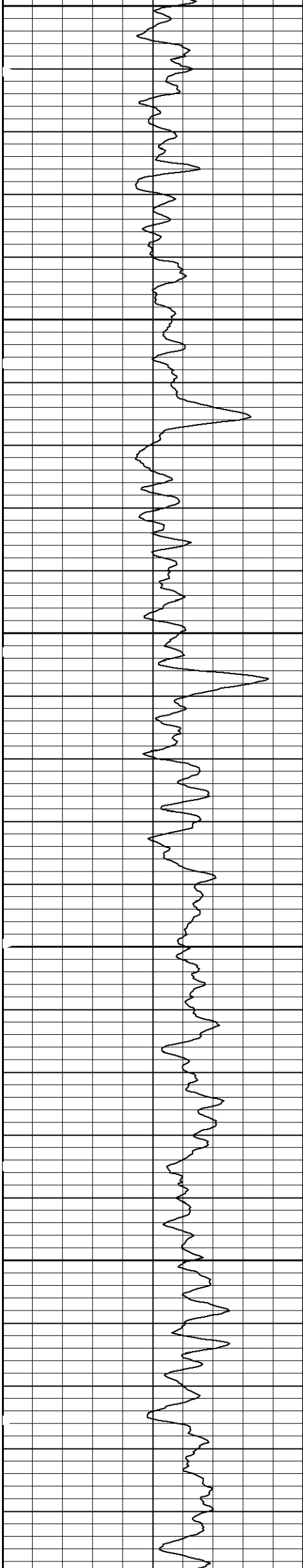


4600

4700

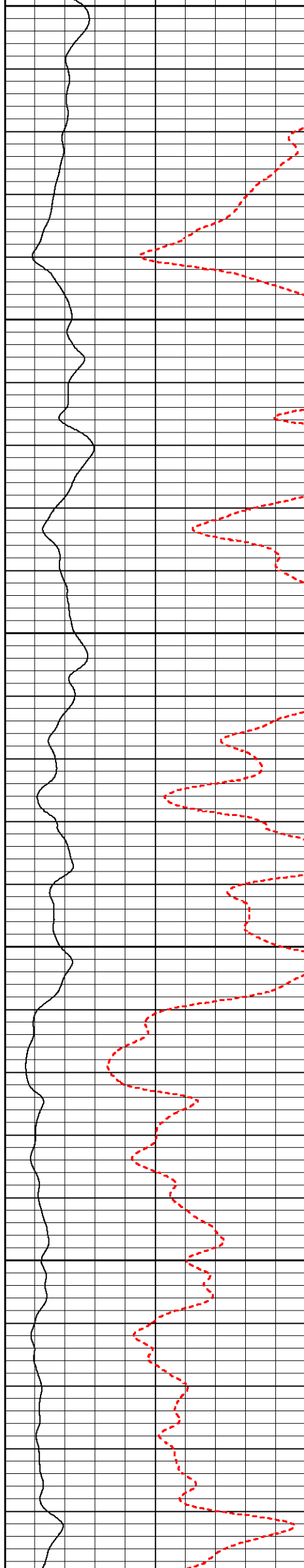
4800

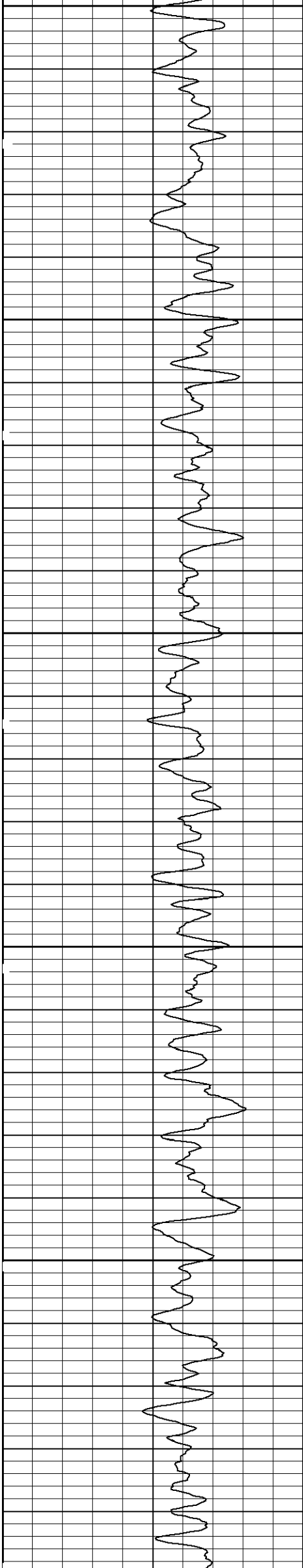




4900

5000

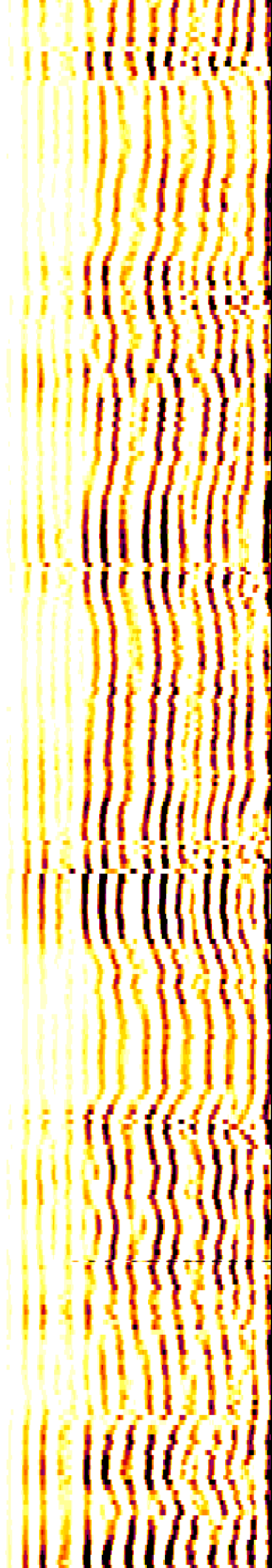
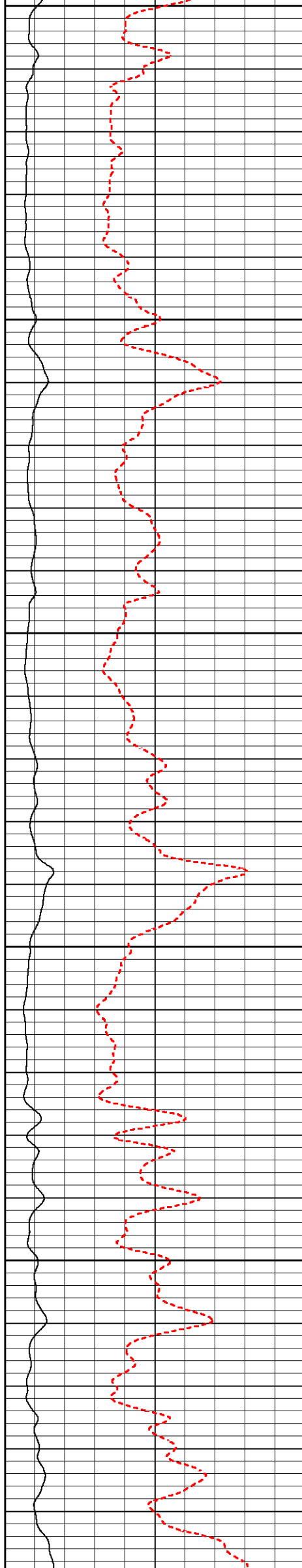


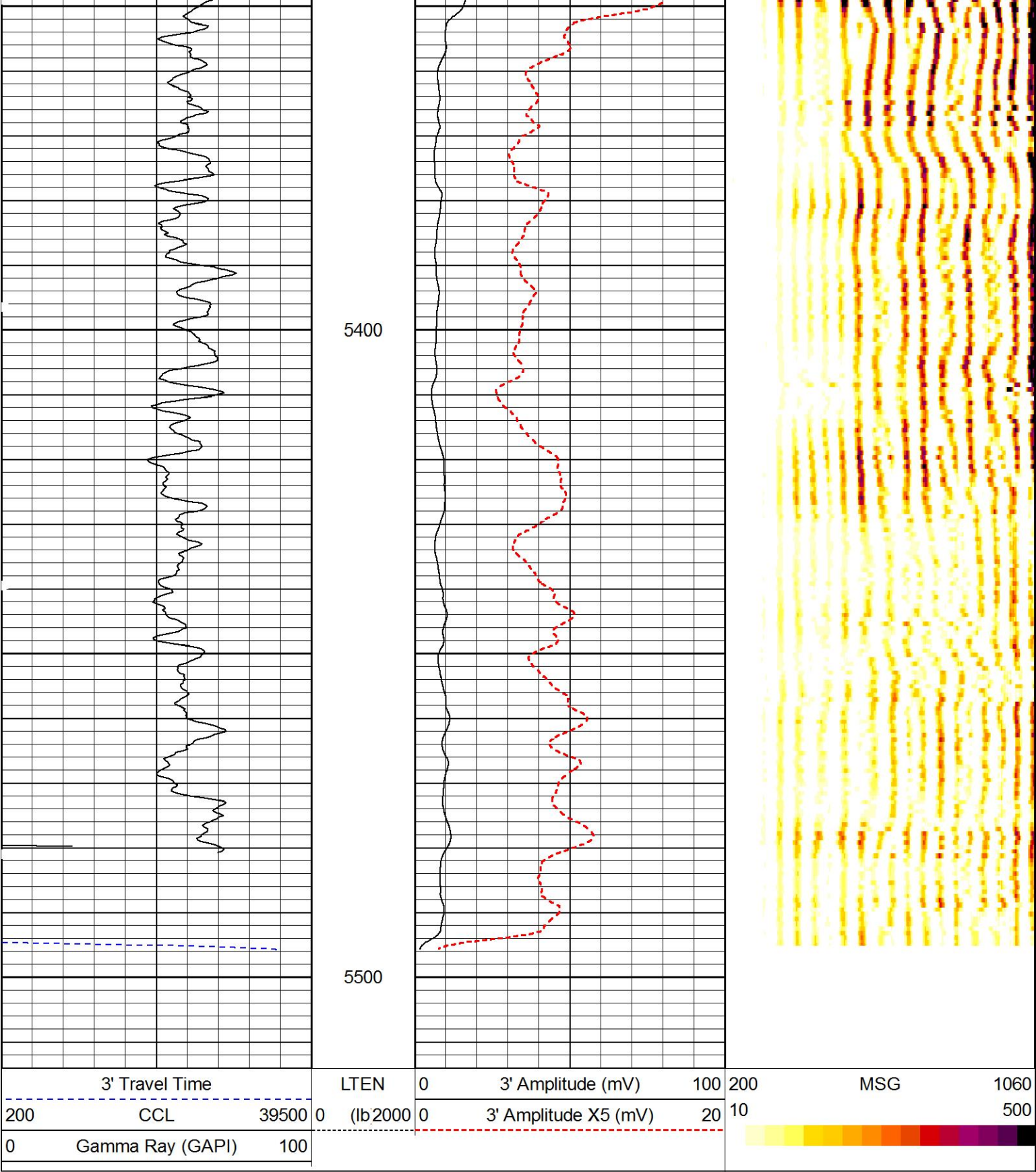


5100

5200

5300





MAIN PASS

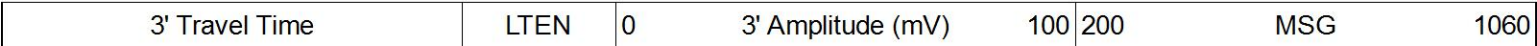
5" = 100'

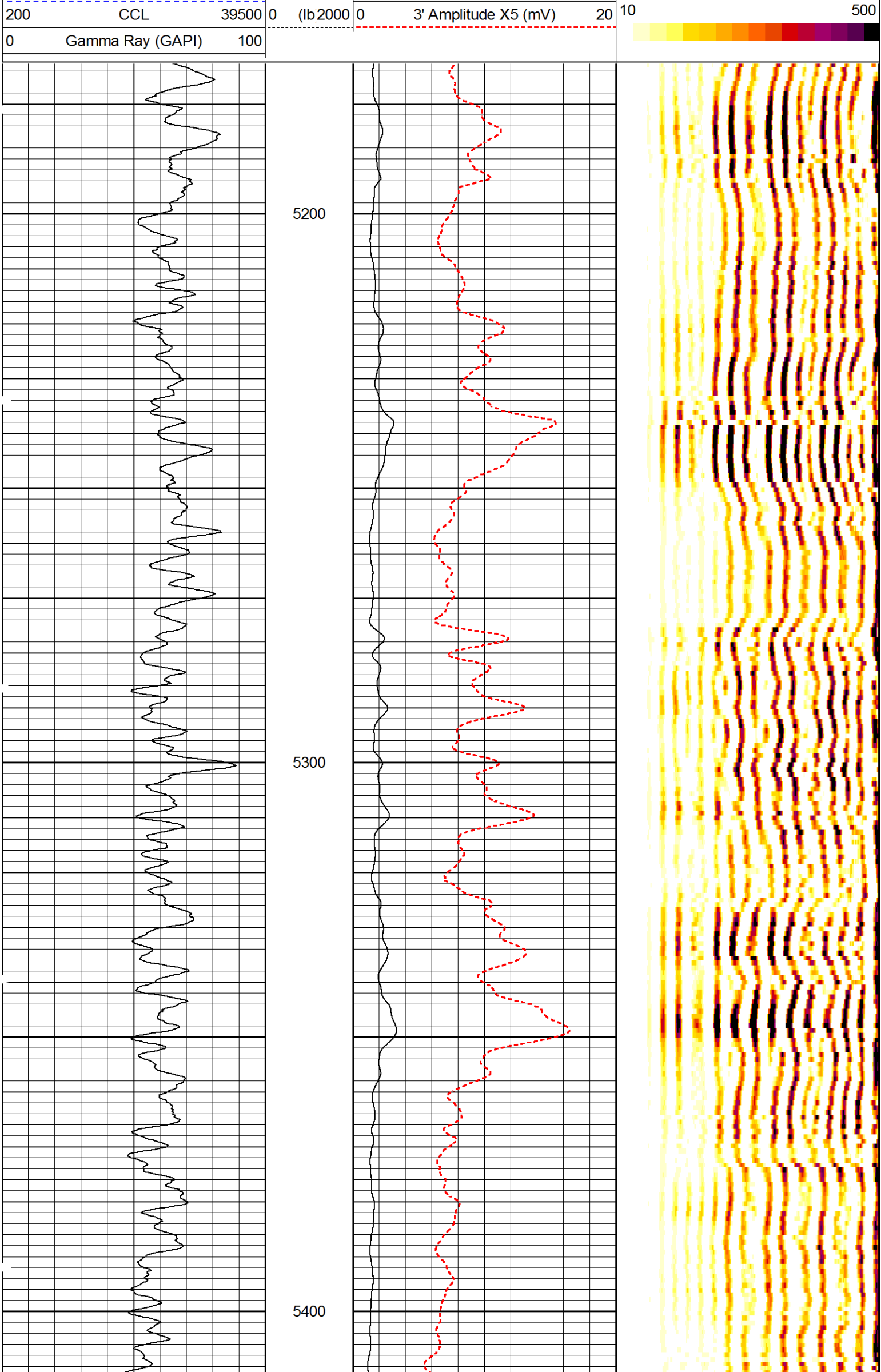
HALLIBURTON

REPEAT PASS


5" = 100'

Database File: anschutz_4-62-16-0560bh.db
Dataset Pathname: CAST_CBL_RPT1
Presentation Format: hcbl
Dataset Creation: Fri Dec 19 21:36:45 2014
Charted by: Depth in Feet scaled 1:240





Y Accelerometer	0.000	1.000	gee	0.000	1.000	gee
Cement Bond Log Shop Calibration Report						
Serial-Model:		11794522-A				
Calibration Performed:		Thu Dec 18 19:37:21 2014				
Free Pipe Calibration						
TT	Measured	Units				
Amplitude	295.0	usec				
Log Base Line	489.5	mV				
	-12.1	mV				
Calibration References and Gain						
Name	Value	Units				
Pipe O.D.	7.000	in				
Pipe Weight	26.0	lb/ft				
Pipe Ref. Amp.	62.2	mV				
Amp. Gain	0.124					
Gamma Ray Calibration Report						
Type / Serial:		002 / 14878				
SHOP CALIBRATION		Wed Dec 17 19:10:14 2014				
Background	Counts/Sec.	Gain	Offset	Jig	Units	
Calibrator	54.0				cps	
	212.1				cps	
		1.3913			GAPI/cps	
PRIMARY VERIFICATION						
Background	0.0				cps	
Calibrator	0.0				cps	
Difference				0.0	GAPI	
BEFORE SURVEY VERIFICATION						
Background	0.0				cps	
Calibrator	0.0				cps	
Difference				0.0	GAPI	
AFTER SURVEY VERIFICATION						
Background	0.0				cps	
Calibrator	0.0				cps	
Difference				0.0	GAPI	

Sensor	Offset (ft)	Schematic	Description	Length (ft)	O.D. (in)	Weight (lb)
CCL	36.23		STNDCH-1_11_16_CH 1.6875 IN CABLE HEAD	1.50	1.44	1.00
			TTTCU-002 (14878) Through Tubing Telemetry Cartridge - Ultrawire	7.65	1.69	100.00
GR	33.97		YHLL003 (12146425)	1.58	1.69	7.00

			XHU-003 (12140423) Crossover Halliburton 1553 to Ultrawire	1.38	1.09	7.00
			CENT-CASTM-CENT CAST M INLINE CENTRALIZER	2.16	3.13	25.00
Temp	24.25					
TT3FT	22.00		HCBLM-A (11794522) Halliburton HCBLM Tool	9.38	2.75	116.00
AMP3FT	22.00					
			CENT-CASTM-CENT CAST M INLINE CENTRALIZER	2.16	3.13	25.00
			HAL-CAST-M-ELECT-CAST-M-Elect (11487.571) CAST M ELECTRONIC		2.75	30.00
AccY2	0.00		HAL-CAST-M-4 3/8 SCAN (11488892) 4 3/8 SCAN CASTM	7.78	4.38	276.00
AccX2	0.00					
AccY1	0.00					
AccX1	0.00					
SCAN	0.00					
LOCTIM	0.00					
UTCTIM	0.00					
Dataset: anschutz_4-62-16-0560bh.db: field/well/run1/CAST_CBL_MAIN1						
Total length: 39.79 ft						
Total weight: 580.00 lb						
O.D.: 4.38 in						

Company	BILL BARRETT				
Well	ANSCHUTZ EQUUS FARM 4-62-16-0560BH				
Field	WILDCAT				
County	WELD	State	CO		
HALLIBURTON	CEMENT BOND LOG (CBL-M)				