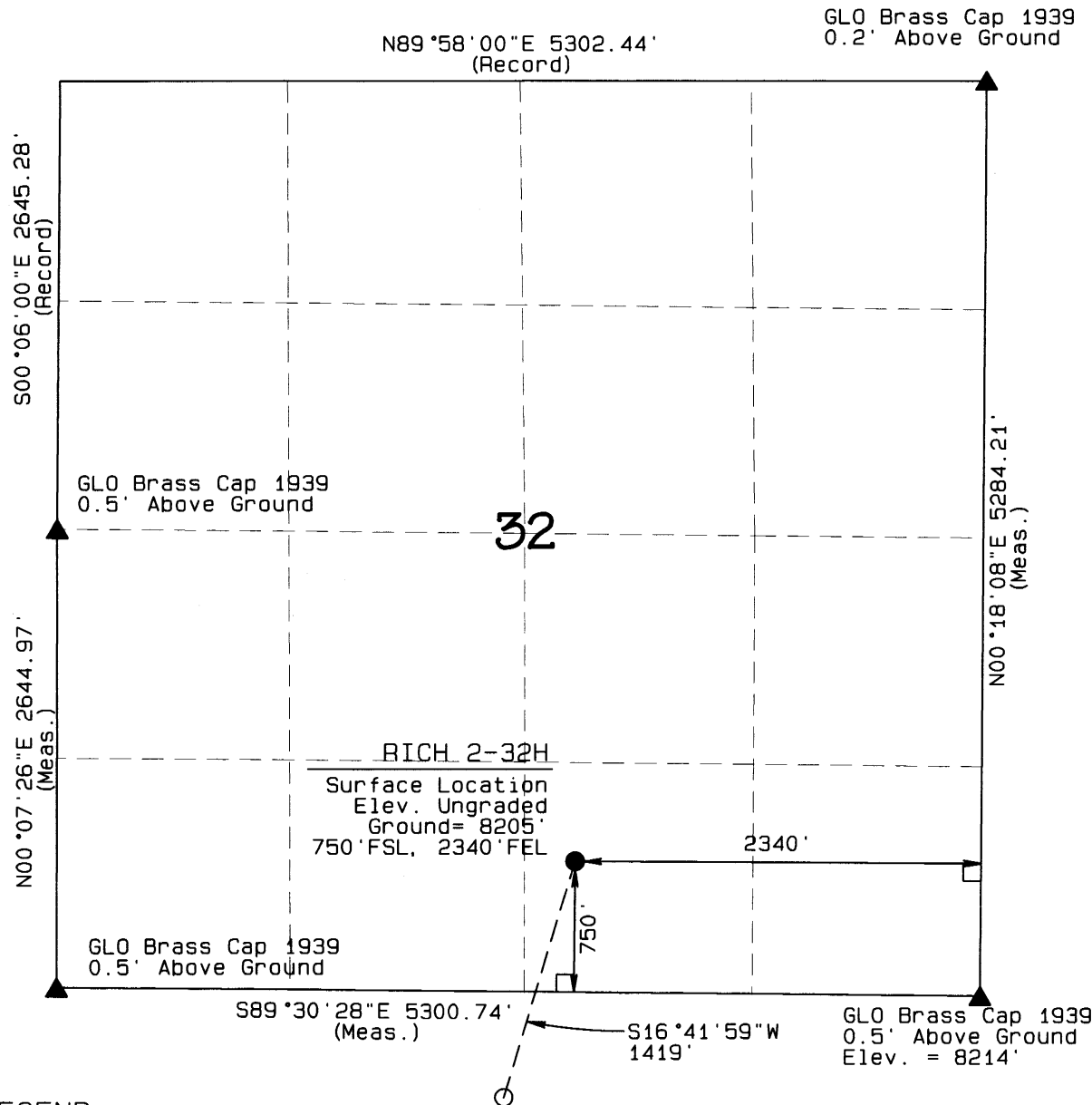


T7N, R80W, 6th P.M.

EE3 LLC



RICH 2-32H Surface Location location as shown in the SW1/4SE1/4 of Section 32, T7N, R80W, 6th P.M., Jackson County, Colorado.

BASIS OF BEARINGS

BASIS OF BEARINGS IS TRUE NORTH USING GPS

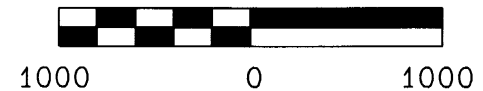
BASIS OF ELEVATION

SPOT ELEVATION AT THE SE CORNER OF SECTION 32, T7N, R80W, 6TH PM, TAKEN FROM THE COALMONT QUADRANGLE, USGS 7.5 MIN QUAD (TOPOGRAPHIC MAP) WITH SAID ELEVATION MARKED AS BEING 8214 FEET.

SURFACE USE: GRAVEL PIT

DISTURBED EARTH SPARSE VEGETATION

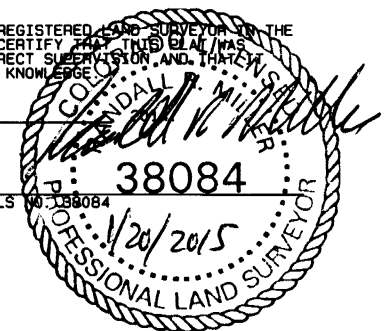
GRAPHIC SCALE 1"=1000'



I RANDALL R. MILLER, BEING A REGISTERED LAND SURVEYOR IN THE STATE OF COLORADO, DO HEREBY CERTIFY THAT THIS PLAN WAS MADE BY ME AND/OR UNDER MY DIRECT SUPERVISION AND THAT IT IS ACCURATE TO THE BEST OF MY KNOWLEDGE.

DATED THIS _____ DAY OF _____

RANDALL R. MILLER, COLORADO PLS NO. 38084



LEGEND

90° SYMBOL
FOUND CORNER
PROPOSED WELL
PROPOSED BHL/LPL



RICH 2-32H
Landing Point Location

NAD 83 (TARGET BOTTOM HOLE)

LATITUDE=40.513250037°N
LONGITUDE=106.402316404°W

NAD 83 (SURFACE LOCATION)

LATITUDE=40.528664°N
LONGITUDE=106.396479°W PDOP = 1.182

NAD 83 (LANDING POINT LOCATION)

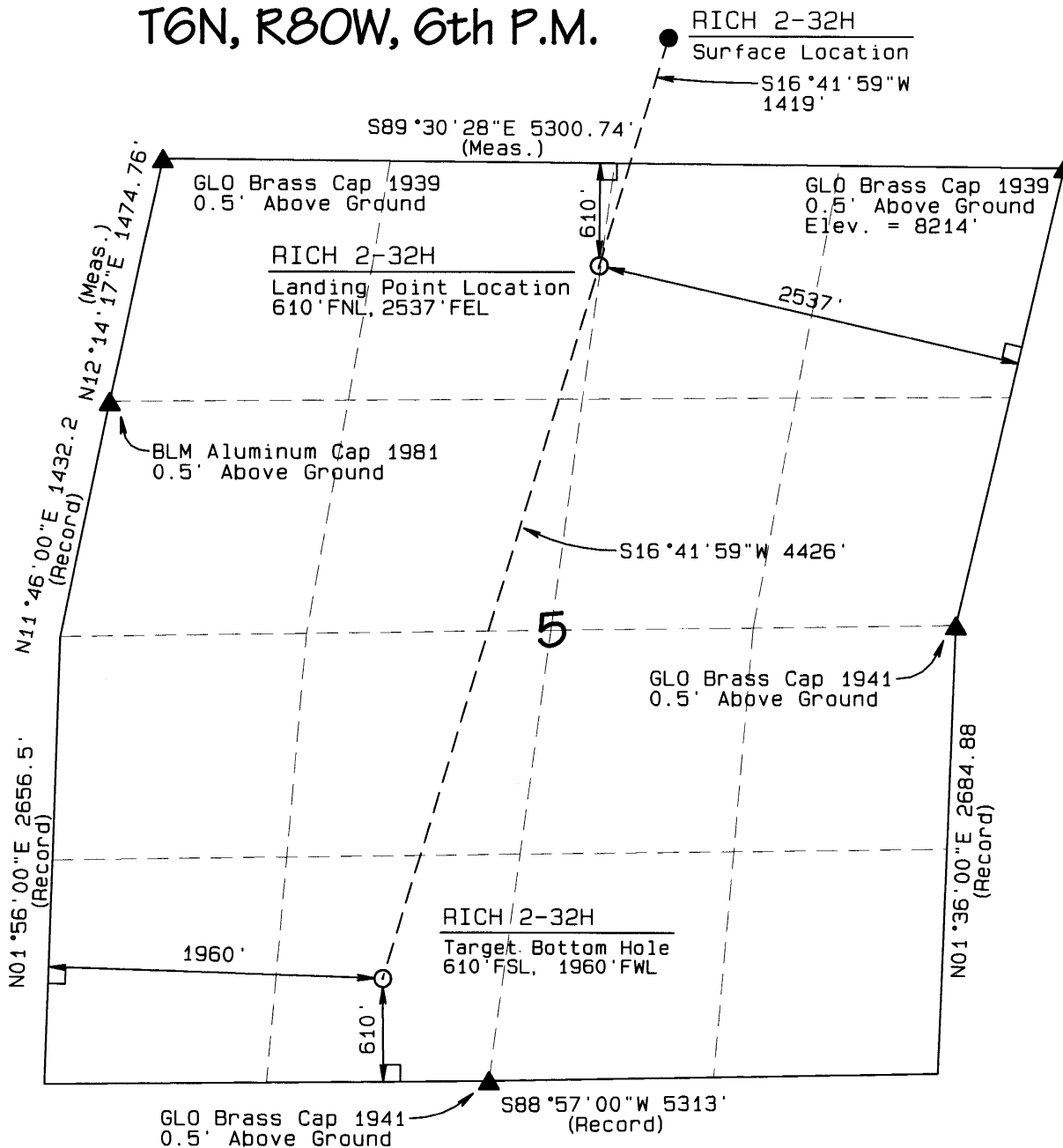
LATITUDE=40.524923091°N
LONGITUDE=106.397896198°W

NORTH PARK ENGINEERING & CONSULTING, INC.

P.O. BOX 395
WALDEN, CO 80480
(970) 723-3725

DATE OF FIELD WORK: JUNE 3, 2014 DRAWING COMPLETION: JUNE **, 2014
SURVEYED BY: RAS DRAWN BY: TAT CHECKED BY: RRM
SHEET 1 OF 1

T6N, R80W, 6th P.M.



EE3 LLC

RICH 2-32H Target Bottom Hole and Landing Point location as shown in Section 5, T6N, R80W, 6th P.M., Jackson County, Colorado.

BASIS OF BEARINGS

BASIS OF BEARINGS IS TRUE NORTH USING GPS

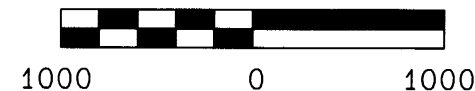
BASIS OF ELEVATION

SPOT ELEVATION AT THE NE CORNER OF SECTION 5, T6N, R80W, 6TH PM, TAKEN FROM THE COALMONT QUADRANGLE, USGS 7.5 MIN QUAD (TOPOGRAPHIC MAP) WITH SAID ELEVATION MARKED AS BEING 8214 FEET.

SURFACE USE: GRAVEL PIT

DISTURBED EARTH SPARSE VEGETATION

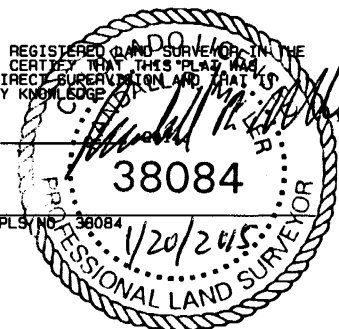
GRAPHIC SCALE 1"=1000'



I RANDALL R. MILLER, BEING A REGISTERED LAND SURVEYOR IN THE STATE OF COLORADO, DO HEREBY CERTIFY THAT THIS PLAT WAS MADE BY ME AND/OR UNDER MY DIRECT SUPERVISION AND THAT IT IS ACCURATE TO THE BEST OF MY KNOWLEDGE.

DATED THIS _____ DAY OF _____

RANDALL R. MILLER, COLORADO PLS/NO. 38084



LEGEND

90° SYMBOL
FOUND CORNER
PROPOSED WELL
PROPOSED BHL/LPL



| | |
|---|--|
| NAD 83 (SURFACE LOCATION) | |
| LATITUDE=40.528664°N LONGITUDE=106.396479°W PDOP = 1.182 | |
| NAD 83 (TARGET BOTTOM HOLE) | NAD 83 (LANDING POINT LOCATION) |
| LATITUDE=40.513250037°N LONGITUDE=106.402316404°W | LATITUDE=40.524923091°N LONGITUDE=106.397896198°W |

NORTH PARK ENGINEERING & CONSULTING, INC.

P.O. BOX 395
WALDEN, CO 80480
(970) 723-3725

DATE OF FIELD WORK: JUNE 3, 2014 DRAWING COMPLETION: JUNE **, 2014
SURVEYED BY: RAS DRAWN BY: TAT CHECKED BY: RRM
SHEET 1 OF 1

EE3 LLC

MultiSection Plan
 RICH 2-32H Surface Location as shown
 in the SW1/4 SE1/4 of Section 32,
 T7N, R80W, 6th P.M., and THE RICH
 2-32H Target Bottom Hole as shown in the
 SE1/4 SW1/4 OF Section 5,
 T6N, R80W, 6th P.M., Jackson County, Colorado.

BASIS OF BEARINGS

BASIS OF BEARINGS IS TRUE NORTH USING GPS

BASIS OF ELEVATION

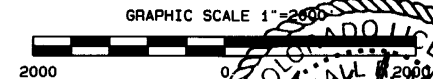
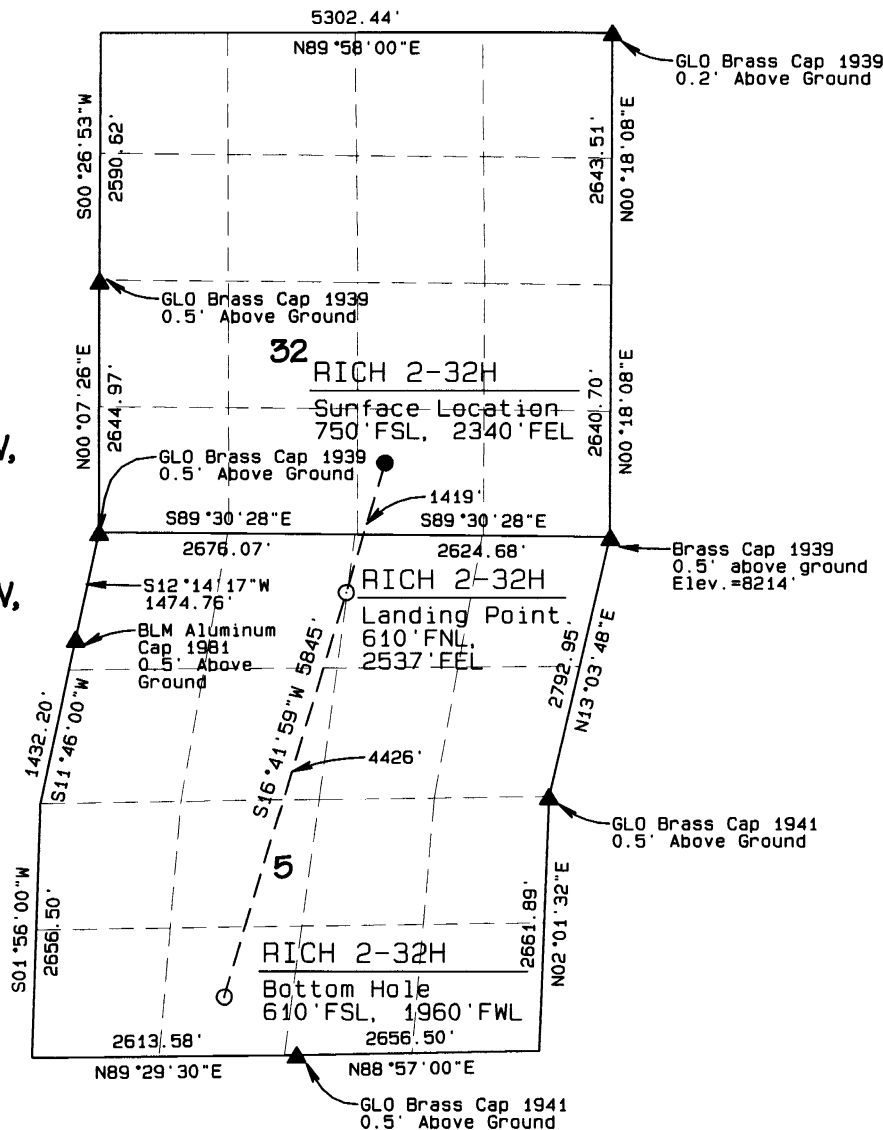
SPOT ELEVATION AT THE SE CORNER OF SECTION 32,
 T7N, R80W, 6TH PM, TAKEN FROM THE COALMONT
 QUADRANGLE, USGS 7.5 MIN QUAD (TOPOGRAPHIC MAP)
 WITH SAID ELEVATION MARKED AS BEING 8214 FEET.

SURFACE USE: GRAVEL PIT

DISTURBED EARTH SPARSE VEGETATION

T7N, R80W,
 6th P.M.

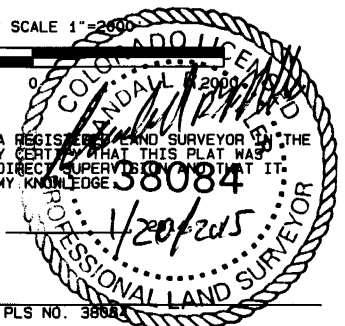
T6N, R80W,
 6th P.M.



I RANDALL R. MILLER, BEING A REGISTERED LAND SURVEYOR IN THE
 STATE OF COLORADO, DO HEREBY CERTIFY THAT THIS PLAT WAS
 MADE BY ME AND/OR UNDER MY DIRECT SUPERVISION AND THAT IT
 IS ACCURATE TO THE BEST OF MY KNOWLEDGE.

DATED THIS _____ DAY OF _____

RANDALL R. MILLER, COLORADO PLS NO. 38882



LEGEND

FOUND CORNER ▲
 PROPOSED SHL ●
 PROPOSED BHL/LPL ○

NAD 83 (TARGET BOTTOM HOLE)

LATITUDE=40.513250037°N
 LONGITUDE=106.402316404°W

NAD 83 (SURFACE LOCATION)

LATITUDE=40.528664°N
 LONGITUDE=106.396479°W PDOP = 1.182

NAD 83 (LANDING POINT LOCATION)

LATITUDE=40.524923091°N
 LONGITUDE=106.397896198°W

NORTH PARK ENGINEERING &
 CONSULTING, INC.

P.O. BOX 395
 WALDEN, CO 80480
 (970) 723-3725

DATE OF FIELD WORK: JUNE 3, 2014 DRAWING COMPLETION: JUNE XX, 2014

SURVEYED BY: RAS DRAWN BY: TAT CHECKED BY: RRM