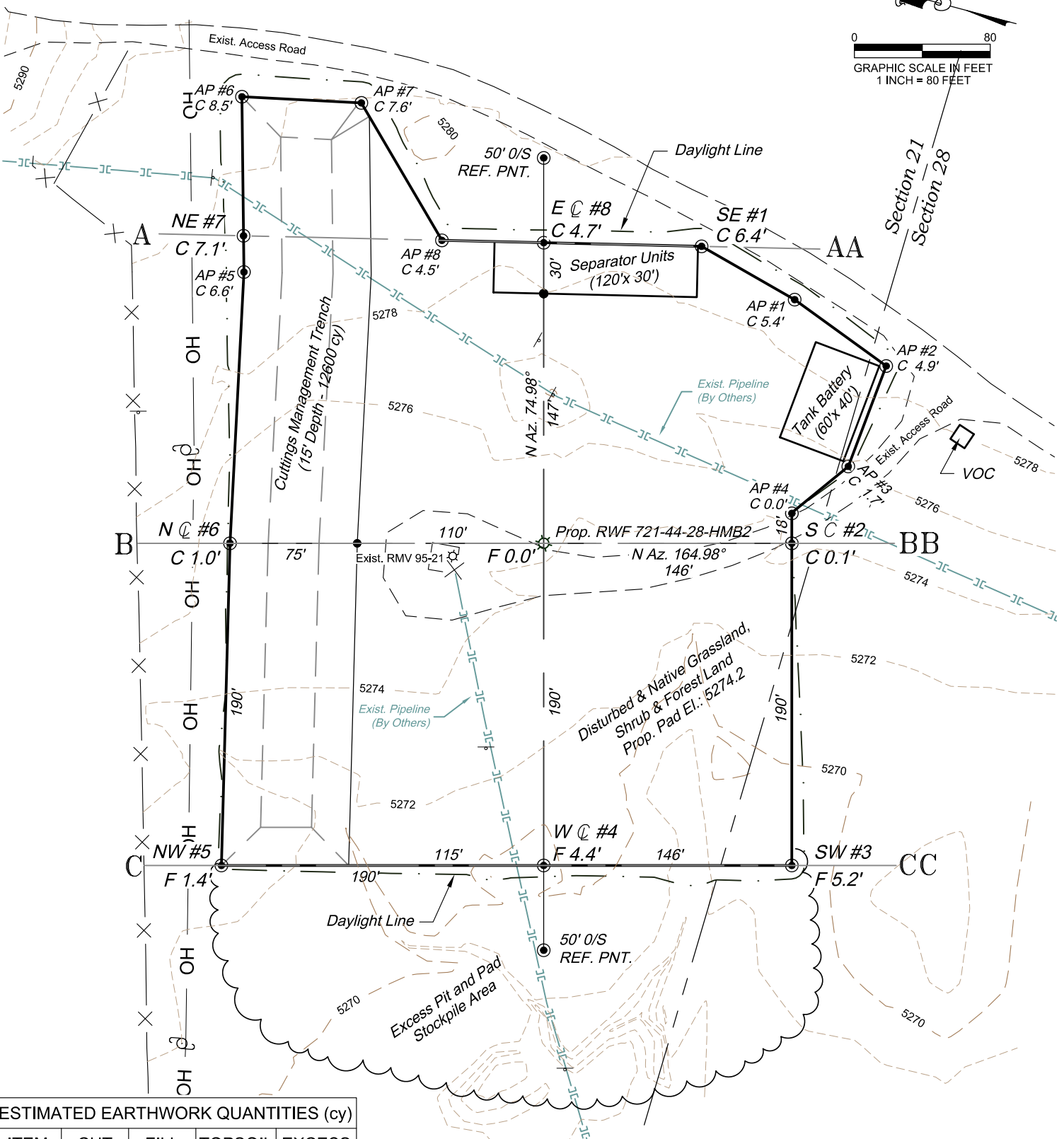


Section 21  
T. 6 S., R. 94 W.



#### ESTIMATED EARTHWORK QUANTITIES (cy)

ITEM	CUT	FILL	TOPSOIL	EXCESS
PAD	9530	4800	4740	-10
PIT	12600			12600
TOTALS	22130	4800	4740	12590

#### \*NOTE:

- 1.) 10% Swell Factor Applied to Earthwork Cut Volume.
- 2.) Topsoil Volume Based on 12" Soil Depth.
- 3.) Total Disturbed Area = ±5.21 ac.
- 4.) Use Excess Pit Material to Complete Pad Surface.

REVISED: 12/19/14

136 East Third Street  
Rifle, Colorado 81650  
Ph. (970) 625-2720  
Fax (970) 625-2773

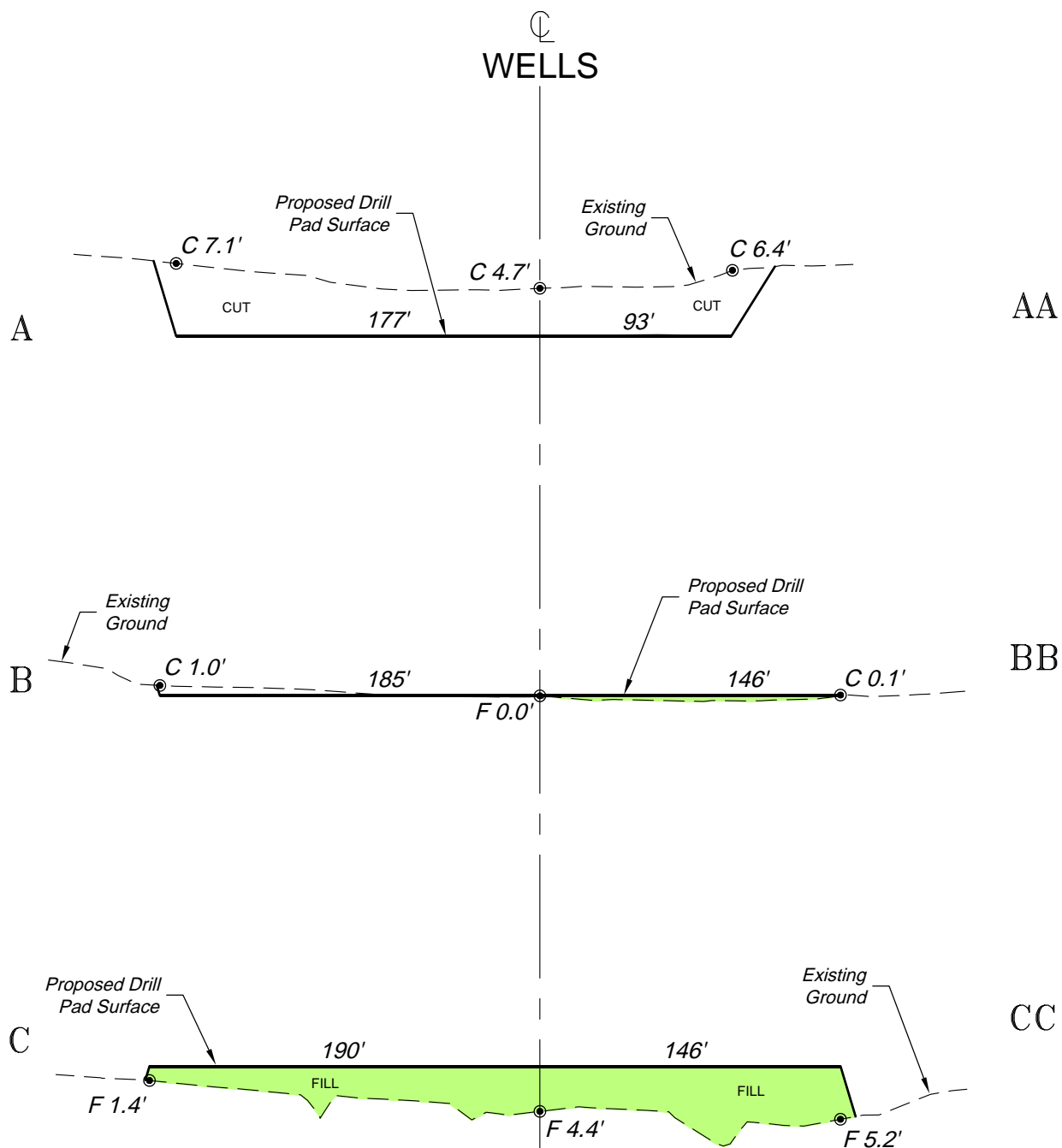


**BOOKCLIFF**  
Survey Services, Inc.

SCALE: 1" = 80'  
DATE: 12/16/14  
PLAT: 2 of 7  
PROJECT: Valley  
DFT: cs

**Construction Plan Prepared for:**  
**WPXENERGY** WPX Energy Rocky Mountain, LLC

RMV 95-21 Drill Pad - Plat 2  
CONSTRUCTION LAYOUT



SCALE: Horiz.: 1" = 80'  
Vert. : 1" = 20'

\*NOTE:  
CUT SLOPES: 1.5:1  
FILL SLOPES: 1.5:1,  
UNLESS OTHERWISE NOTED.

136 East Third Street  
Rifle, Colorado 81650  
Ph. (970) 625-2720  
Fax (970) 625-2773



**BOOKCLIFF**  
Survey Services, Inc.

SCALE: As Noted  
DATE: 12/16/14  
PLAT: 3 of 7  
PROJECT: Valley  
DFT: cs

Construction Plan Prepared for:



WPX Energy Rocky Mountain, LLC

RMV 95-21 Drill Pad - Plat 3  
CONSTRUCTION LAYOUT  
CROSS SECTIONS