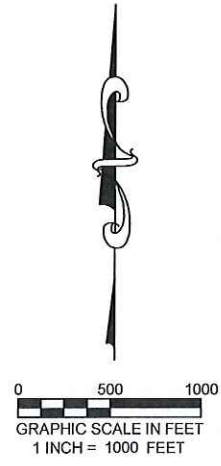
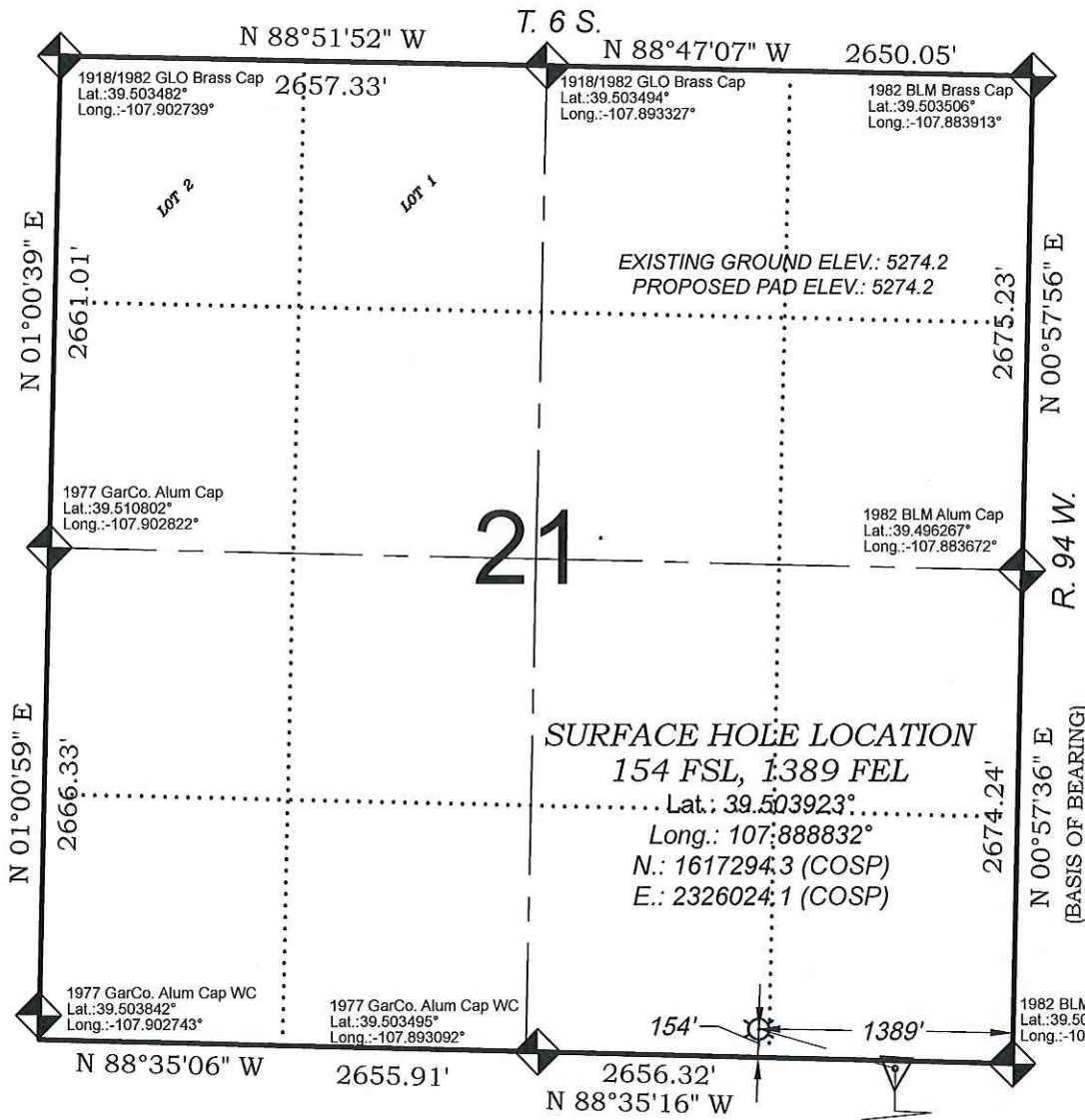


# SURFACE LOCATION - Clough RWF 721-44-28-HMB2



## 21

**SURFACE HOLE LOCATION**  
 154 FSL, 1389 FEL  
 Lat.: 39.503923°  
 Long.: 107.888832°  
 N.: 1617294.3 (COSP)  
 E.: 2326024.1 (COSP)

SEE CONSTRUCTION LAYOUT PLAT  
 FOR VISIBLE IMPROVEMENTS  
 WITHIN 500' OF THIS LOCATION

**SURVEYORS STATEMENT**

I, MICHAEL J. LANGHORNE, A REGISTERED LAND SURVEYOR IN THE STATE OF COLORADO DO HEREBY CERTIFY THAT THE SURVEY SHOWN HEREON WAS PREPARED UNDER MY DIRECT SUPERVISION AND HAS BEEN STAKED ON THE GROUND AS SHOWN ON THE PLAT AND CHECKING THAT THIS MAP IS A TRUE REPRESENTATION THEREOF.

Michael Langhorne

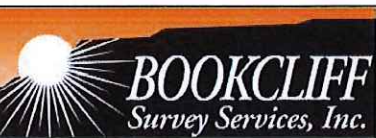
MICHAEL J. LANGHORNE, COLORADO REGISTRATION NO. 36572  
 FOR AND ON BEHALF OF  
 BOOKCLIFF SURVEY SERVICES, INC.

**REFERENCES**

- 1) Dependent Resurvey & Survey of Tract 38, T. 6 S., R. 94 W., 6th P.M (BLM PLAT)
- 2) U.S.G.S. QUAD: ANVIL POINTS & RULISON, CO

REVISED: 12/16/14

136 East Third Street  
 Rifle, Colorado  
 81650 Ph. (970)  
 625-2720 Fax (970)  
 625-2773



SURVEY DATE:	7/14/11
MAP DATE:	12/15/14
SCALE:	1" = 1000'
PLAT:	1 of 1
PROJECT:	Valley

- LEGEND -**
- FIELD LOCATED SECTION MONUMENTS AS DESCRIBED
  - FIELD SURVEYED WELL LOCATION
  - CALCULATED BOTTOM HOLE LANDING POINT
  - CALCULATED SECTION CORNER LOCATION

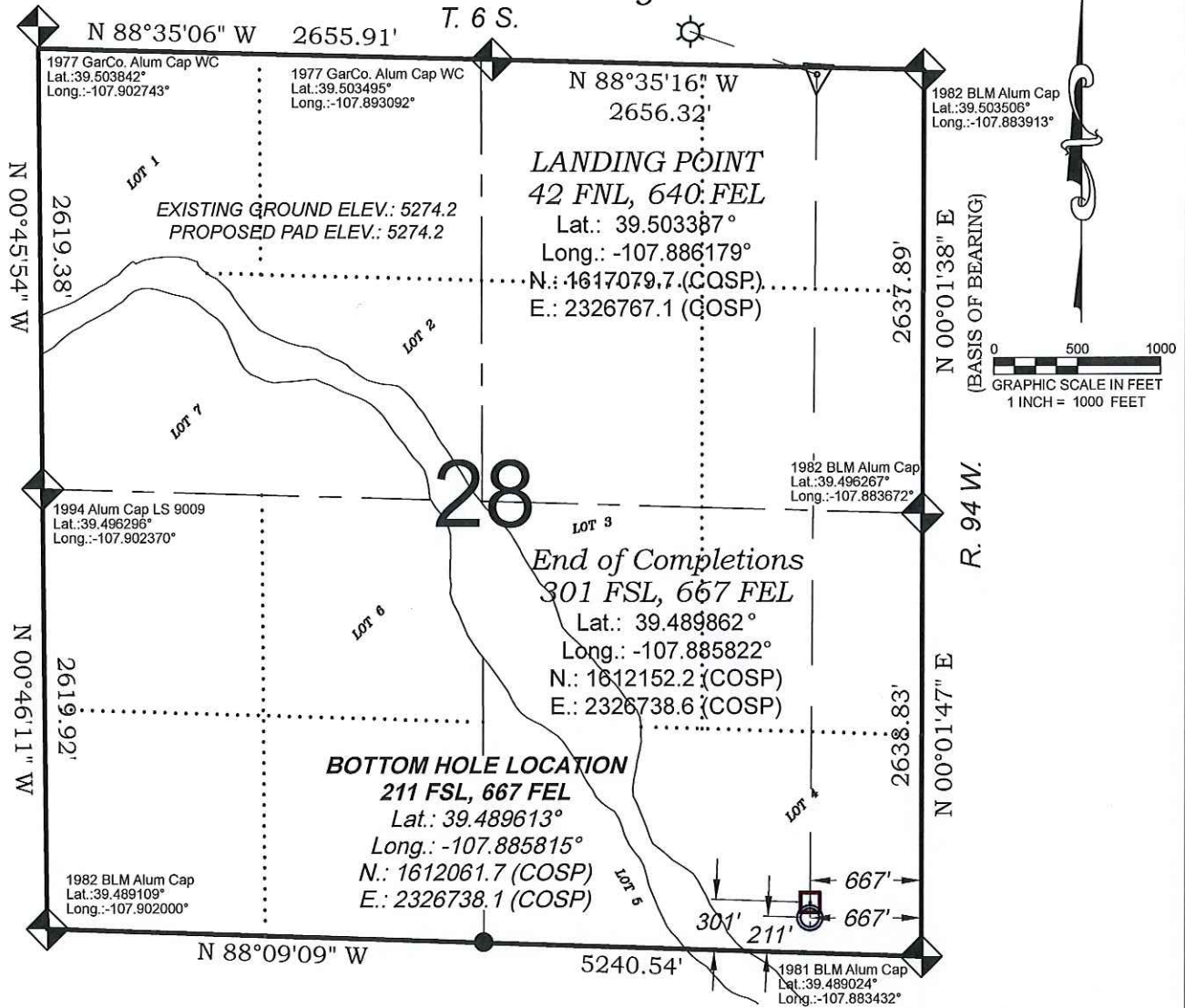
**NOTES**

- 1) ELEVATIONS BASED ON N.A. V.D. 1988 PUBLISHED COORDINATES.
- 2) LATITUDES AND LONGITUDES ARE BASE ON NAD 83, PUBLISHED COORDINATES
- 3) STATE PLANE COORDINATES ARE BASED ON COLORADO CENTRAL ZONE, U.S. SURVEY FEET.
- 4) ELEVATION MASK SET TO 15°
- 5) GPS OPERATOR J. KIRKPATRICK, OBSERVED A PDOP 2.6 ON SURVEY POINT NUMBER 162.
- 6) SURFACE AND BOTTOM HOLE LOCATIONS ARE MEASURED 90° FROM SECTION LINES.

**WELL LOCATION PLAT Prepared for:**

**WPX ENERGY** WPX Energy Rocky Mountain, LLC  
 SW1/4 SE1/4, SECTION 21  
 T. 6 S., R. 94 W. of the 6th P.M.  
 GARFIELD COUNTY, COLORADO

# TARGET BOTTOM LOCATIONS - Clough RWF 721-44-28-HMB2



SEE CONSTRUCTION LAYOUT PLAT  
FOR VISIBLE IMPROVEMENTS  
WITHIN 500' OF THIS LOCATION

## SURVEYORS STATEMENT

I, MICHAEL J. LANGHORNE, A REGISTERED LAND SURVEYOR IN THE STATE OF COLORADO DO HEREBY CERTIFY THAT THE SURVEY SHOWN HEREON WAS PREPARED UNDER MY DIRECT SUPERVISION AND HAS BEEN STAKED ON THE GROUND AS SHOWN ON THE PLAT AND CHECKING THAT THIS MAP IS A TRUE REPRESENTATION THEREOF.

*Michael J. Langhorne*

MICHAEL J. LANGHORNE, COLORADO REGISTRATION NO. 36572  
FOR AND ON BEHALF OF  
BOOKCLIFF SURVEY SERVICES, INC.

## REFERENCES

- 1) Dependent Resurvey & Survey of Tract 38, T. 6 S., R. 94 W., 6th P.M (BLM PLAT)
- 2) U.S.G.S. QUAD: ANVIL POINTS & RULISON, CO

REVISED: 12/16/14

136 East Third Street  
Rifle, Colorado  
81650 Ph. (970)  
625-2720 Fax (970)  
625-2773



SURVEY DATE: 7/14/11  
MAP DATE: 12/15/14  
SCALE: 1" = 1000'  
PLAT: 1 of 1  
PROJECT: Valley

## - LEGEND -

- FIELD LOCATED SECTION MONUMENTS AS DESCRIBED
- FIELD SURVEYED WELL LOCATION
- CALCULATED BOTTOM HOLE LANDING POINT
- CALCULATED SECTION CORNER LOCATION

## NOTES

- 1) ELEVATIONS BASED ON N.A. V.D. 1988 PUBLISHED COORDINATES.
- 2) LATITUDES AND LONGITUDES ARE BASE ON NAD 83, PUBLISHED COORDINATES
- 3) STATE PLANE COORDINATES ARE BASED ON COLORADO CENTRAL ZONE, U.S. SURVEY FEET.
- 4) ELEVATION MASK SET TO 15°
- 5) GPS OPERATOR J. KIRKPATRICK, OBSERVED A PDOP 2.6 ON SURVEY POINT NUMBER 162.
- 6) SURFACE AND BOTTOM HOLE LOCATIONS ARE MEASURED 90° FROM SECTION LINES.

WELL LOCATION PLAT Prepared for:  
WPX ENERGY

WPX Energy Rocky Mountain, LLC

SW1/4 SE1/4, SECTION 21  
T. 6 S., R. 94 W. of the 6th P.M.  
GARFIELD COUNTY, COLORADO