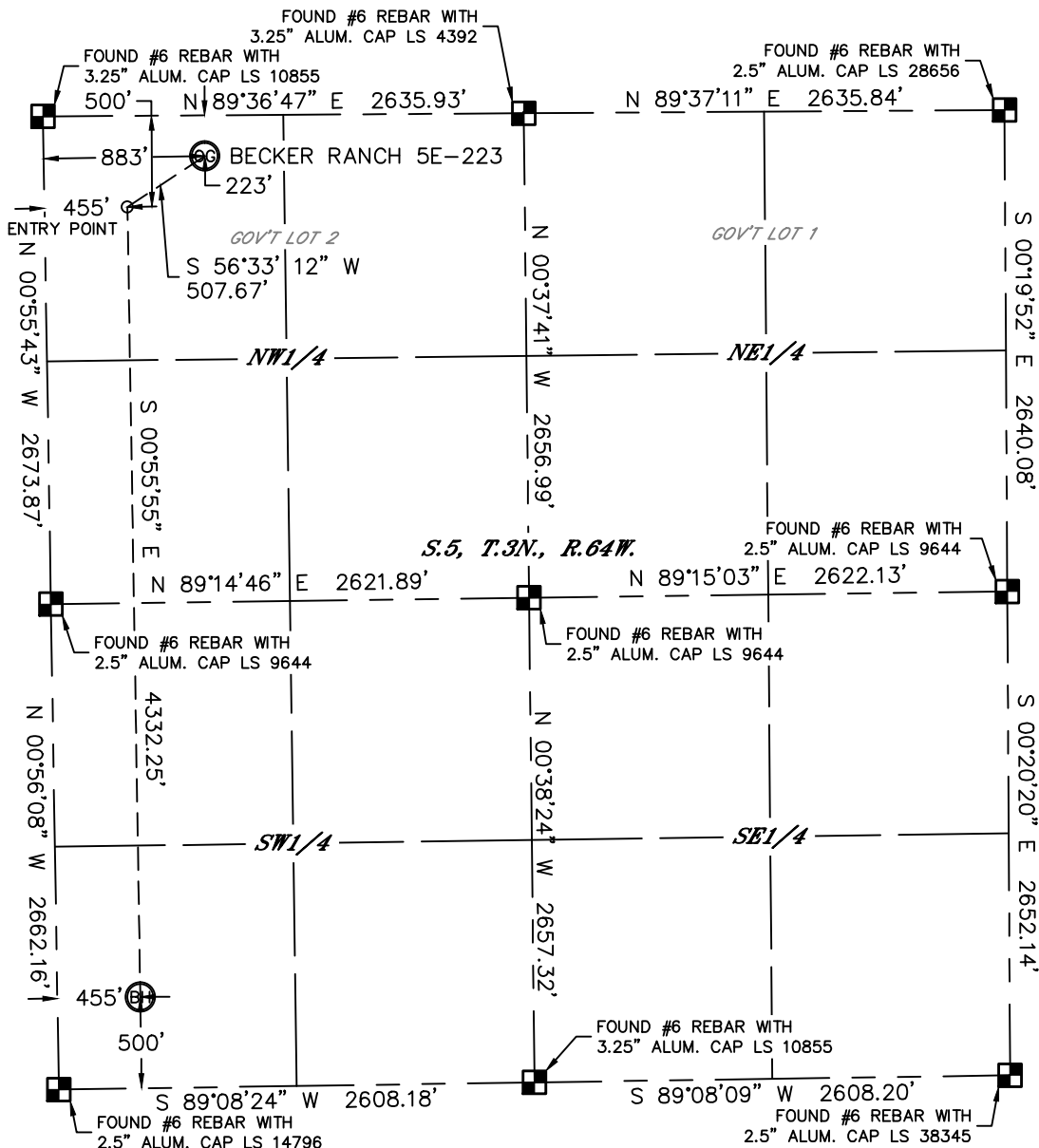




# WELL LOCATION CERTIFICATE

SECTION: 5  
TOWNSHIP: 3N  
RANGE: 64W

THIS MAP DOES NOT REPRESENT A BOUNDARY SURVEY



In accordance with a request from Mac Neumann with PDC ENERGY Lat40°, Inc. has determined the surface location of the BECKER RANCH 5E-223 to be 223' from the NORTH line and 883' from the WEST line and the bottom hole to be 500' from the SOUTH line and 455' from the WEST line as measured at right angles from the section lines of Section 5, Township 3 North, Range 64 West of the Sixth Principal Meridian, County of Weld, State of Colorado.

I hereby state that this Well Location Certificate was prepared by me, or under my direct supervision, that the fieldwork was completed on 7/17/2013, for and on behalf of PDC ENERGY. That this is not a Land Survey Plat or an Improvement Survey Plat, and that it is not to be relied upon for establishment of fence, building, or other future improvement lines.

NOTE:

- 1) Bearings shown are Grid Bearings of the Colorado State Plane Coordinate System, North Zone, North American Datum 1983/2007. The lineal dimensions as contained herein are based upon the "U.S. Survey Foot."
- 2) Ground elevations are based on an observed GPS elevation (NAVD 1988 DATUM).
- 3) IMPROVEMENTS: See LOCATION DRAWING for all visible improvements within 400' of disturbed area.
- 4) SURFACE USE: RANGELAND
- 5) INSTRUMENT OPERATOR: ADAM KELLY
- 6) NEAREST CULTURAL ITEMS:  
BUILDING: 738' NE  
BUILDING UNIT: BU1 738' NE  
HIGH OCCUPANCY BUILDING UNIT: 5280'+  
DESIGNATED OUTSIDE ACTIVITY AREA: 5280'+  
PUBLIC ROAD: 208' N  
ABOVE GROUND UTILITY: 262' N  
RAILROAD: 5280'+  
PROPERTY LINE: 223' N

SURFACE LOCATION

LAT: 40.26117°N  
LONG: 104.58108°W  
PDOP: 1.3  
ELEV: 4820'  
1/4,1/4: NW1/4NW1/4

BOTTOM HOLE

LAT: 40.24853°N  
LONG: 104.58251°W

ENTRY POINT

LAT: 40.26042°N  
LONG: 104.58261°W

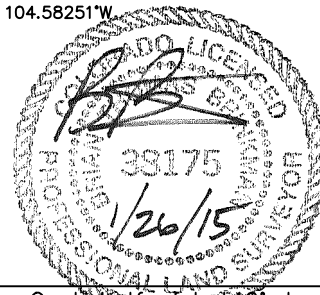
LEGEND

- = ALIQUOT MONUMENT AS DESCRIBED
- = CALCULATED POSITION

Brian T. Brinkman—On behalf of Lat40°, Inc.

Colorado Licensed Professional  
Land Surveyor No. 38175

DATE: 01/26/2015  
PROJECT#: 2013107

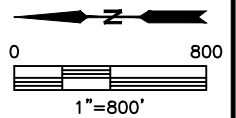
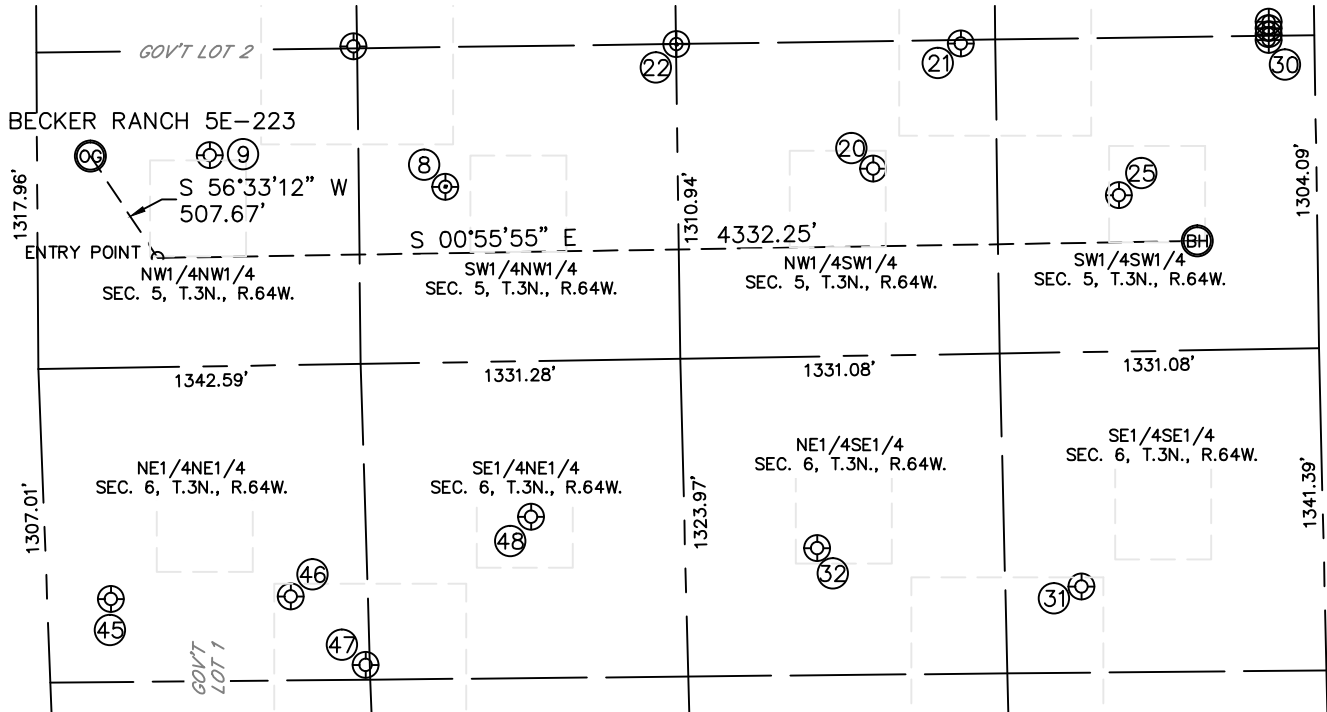




# SITE SKETCH

## BECKER RANCH 5E-223

SECTION: 5  
TOWNSHIP: 3N  
RANGE: 64W



WELL NO.	WELL NAME	SHL FOOTAGE				SHL LAT°	SHL LONG°	PDOP	ELEV (FT.)	1/4/1/4
8	BECKER 5-9	1701	FNL	731	FWL	40.25712	-104.58159	1.5	4803	SWNW
9	BECKER 5-7	721	FNL	878	FWL	40.25980	-104.58108	1.8	4824	NWNW
20	BECKER 5-8	1845	FSL	779	FWL	40.25222	-104.58138	1.7	4767	NWSW
21	BECKER 7	1472	FSL	1293	FWL	40.25121	-104.57953	1.7	4758	NWSW
22	BECKER 8-12 I	2658	FSL	1310	FWL	40.25446	-104.57950	2.4	4777	NWSW
25	BECKER 5-14	823	FSL	651	FWL	40.24942	-104.58182	1.5	4759	SWSW
30	LDS D08-30D	191	FSL	1287	FWL	40.24769	-104.57953	2.4	4751	SWSW
31	MCKENNEY 6-1	1011	FSL	976	FEL	40.24989	-104.58765	2.3	4784	SESE
32	MCKENNEY 6-3	2110	FSL	799	FEL	40.25291	-104.58704	2.0	4780	NESE
45	HOFF PC D 06-27	265	FNL	963	FEL	40.26099	-104.58769	2.8	4829	NENE
46	MCKENNEY 6-2	1016	FNL	964	FEL	40.25893	-104.58768	3.4	4817	NENE
47	HOFF 6-15	1316	FNL	1254	FEL	40.25808	-104.58871	2.8	4803	NENE
48	MCKENNEY 6-14	2029	FNL	648	FEL	40.25617	-104.58652	2.8	4796	SENE