

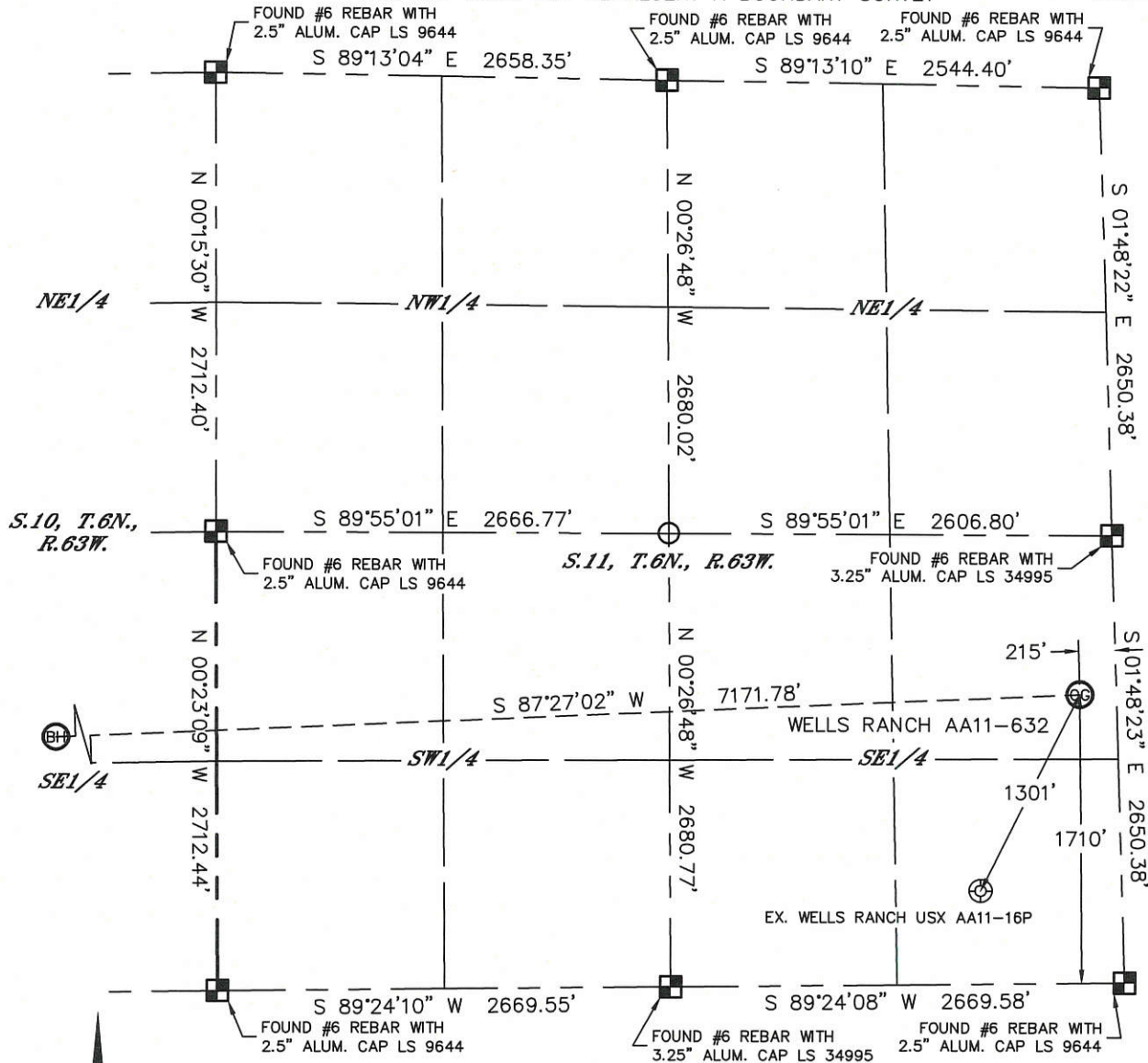


Lat40°, Inc. 6250 W. 10th Street, Unit 2, Greeley, CO 970-515-5294

WELL LOCATION CERTIFICATE

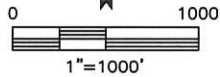
SECTION: 11
TOWNSHIP: 6N
RANGE: 63W

THIS MAP DOES NOT REPRESENT A BOUNDARY SURVEY



In accordance with a request from Greg Wilson with Noble Energy Inc., Lat40°, Inc. has determined the surface location of the WELLS RANCH AA11-632 to be 1710' from the SOUTH line and 215' from the EAST line of Section 11, Township 6 North, Range 63 West and the bottom hole to be 1467' from the SOUTH line and 2085' from the EAST line as measured at right angles from the section lines of Section 10, Township 6 North, Range 63 West of the Sixth Principal Meridian, County of Weld, State of Colorado.

I hereby state that this Well Location Certificate was prepared by me, or under my direct supervision, that the fieldwork was completed on 9-8-2014, for and on behalf of Noble Energy Inc.. That this is not a Land Survey Plat or an Improvement Survey Plat, and that it is not to be relied upon for establishment of fence, building, or other future improvement lines.



NOTE:

- Bearings shown are Grid Bearings of the Colorado State Plane Coordinate System, North Zone, North American Datum 1983. The lineal dimensions as contained herein are based upon the "U.S. Survey Foot."
- Ground elevations are based on an observed GPS elevation (NAVD 1988 DATUM).
- IMPROVEMENTS: See LOCATION DRAWING for all visible improvements within 500' of disturbed area.
- SURFACE USE: RANGELAND
- INSTRUMENT OPERATOR: WYATT HALL
- NEAREST EXISTING WELL: ±1301' SW (WELLS RANCH USX AA11-16P)
- NEAREST CULTURAL ITEMS:
BUILDING: 5280'+
BUILDING UNIT: 5280'+
HIGH OCCUPANCY BUILDING UNIT: 5280'+
DESIGNATED OUTSIDE ACTIVITY AREA: 5280'+
PUBLIC ROAD: ±5067' W (CR 69)
ABOVEGROUND UTILITY: 5280'+
RAILROAD: 5280'+
PROPERTY LINE: ±215' E

SURFACE LOCATION
LAT: 40.49854°N
LONG: 104.39509°W
PDOP: 1.8
ELEV: 4854'
1/4,1/4: NESE

BOTTOM HOLE
LAT: 40.49791°N
LONG: 104.42086°W

LEGEND

- = ALIQUOT MONUMENT AS DESCRIBED
- = CALCULATED POSITION

SHEET 1 OF 2

Kyle E. Rutz-On behalf of
Colorado Licensed Professional
Land Surveyor No. 38307



DATE: 10/6/2014
PROJECT#: 2014168

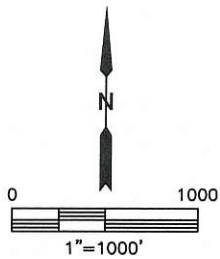
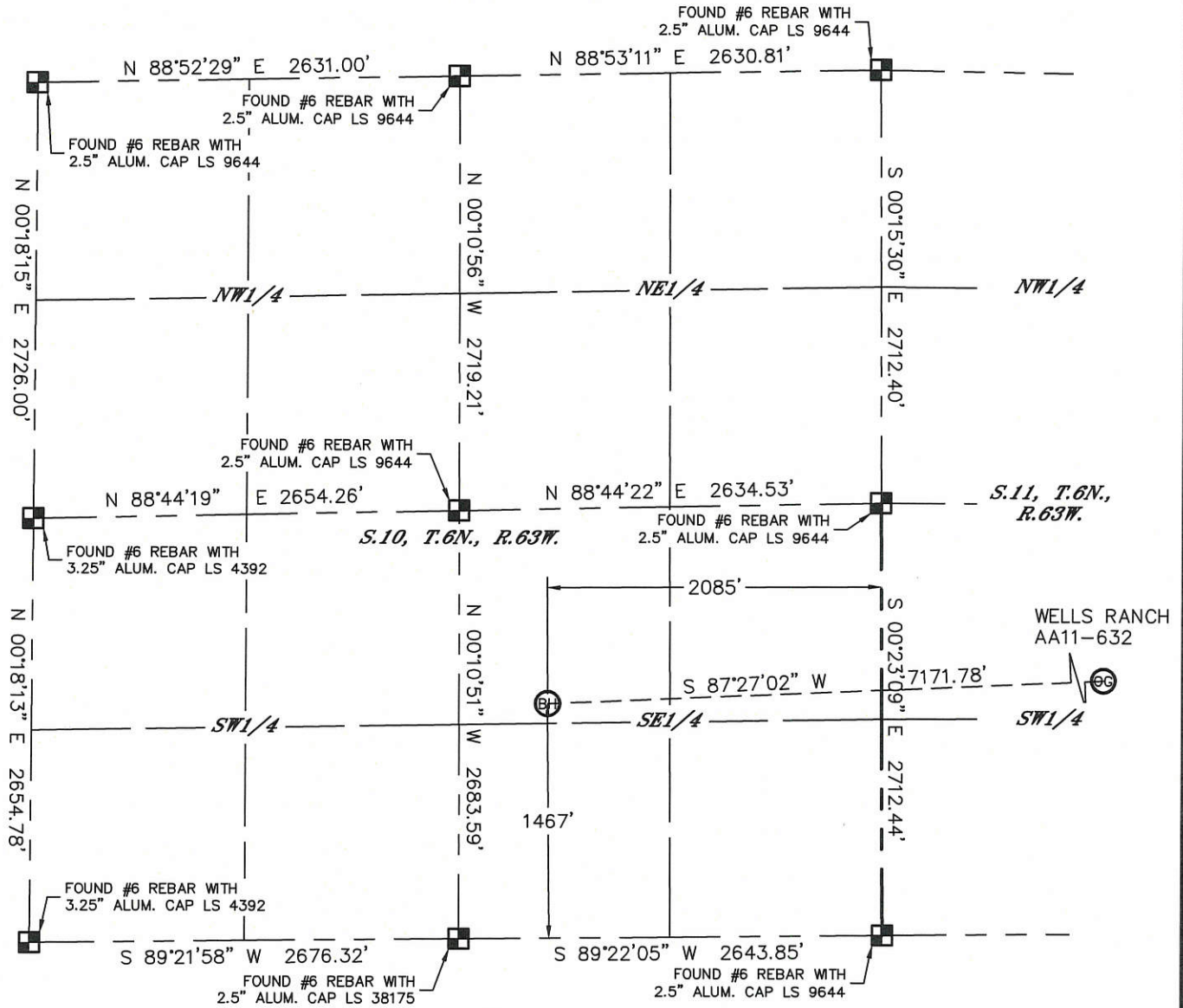


Lat40°, Inc. 6250 W. 10th Street, Unit 2, Greeley, CO 970-515-5294

WELL LOCATION CERTIFICATE

SECTION: 11
TOWNSHIP: 6N
RANGE: 63W

THIS MAP DOES NOT REPRESENT A BOUNDARY SURVEY



- LEGEND
- = ALIQUOT MONUMENT AS DESCRIBED
 - = CALCULATED POSITION

SHEET 2 OF 2

Kyle E. Rutz-On
Colorado Licensed Professional Land Surveyor No. 38307

DATE: 10/6/2014
PROJECT#: 2014168

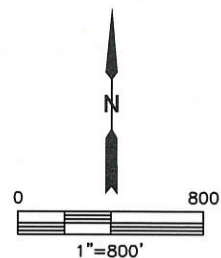
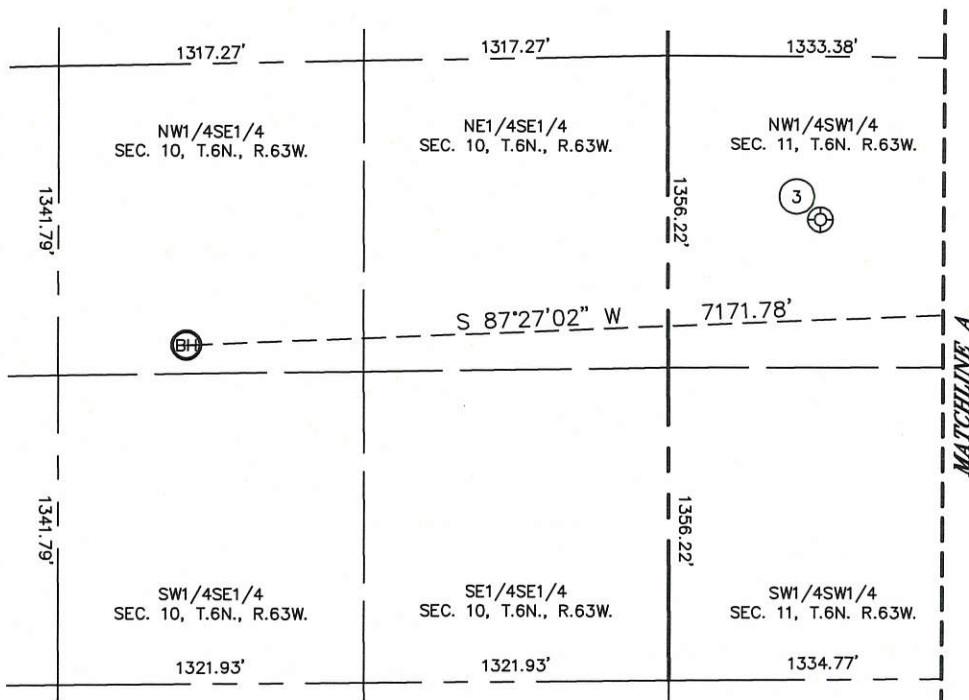
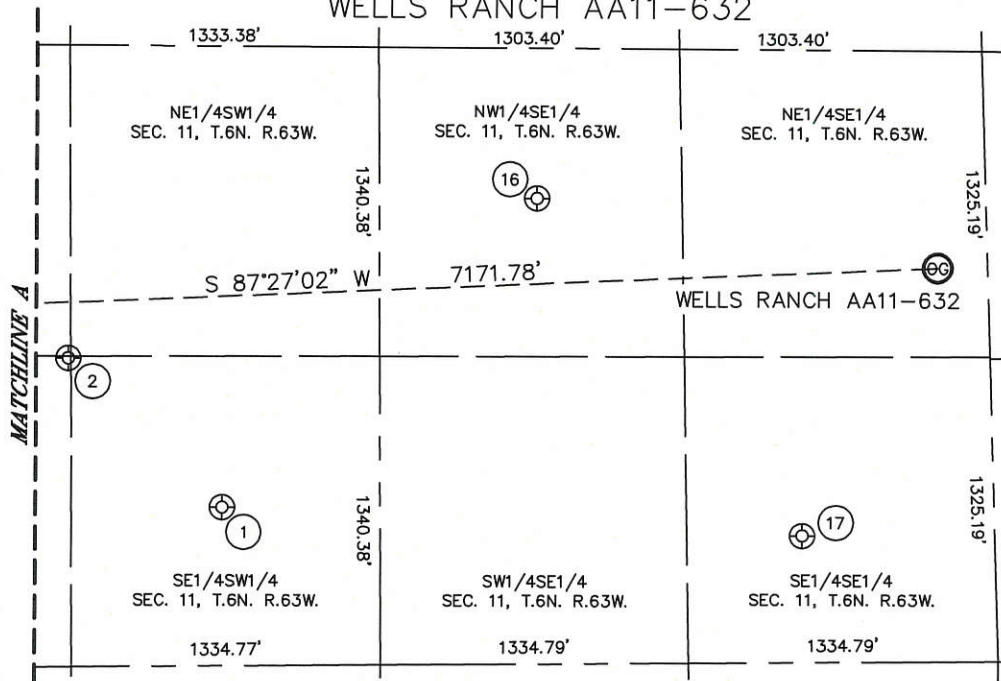


Lat40 , Inc. 6250 W. 10th Street, Unit 2, Greeley, CO 970-515-5294

SITE SKETCH

SECTION: 11
TOWNSHIP: 6N
RANGE: 63W

WELLS RANCH AA11-632



WELL NO.	WELL NAME	SHL FOOTAGE			SHL LAT°	SHL LONG°	PDOP	ELEV (FT.)	1/4/1/4	
		FSL	1984	FWL						
1	WELLS RANCH USX AA 11-14	689	FSL	1984	FWL	40.49575	-104.40624	1.8	4803	SESW
2	WELLS RANCH USX AA 11-25	1339	FSL	1323	FWL	40.49754	-104.40861	1.9	4801	SWSW
3	WELLS RANCH USX AA 11-12	1997	FSL	659	FWL	40.49935	-104.41098	1.9	4784	NWSW
16	WELLS RANCH USX AA 11-10P	2020	FSL	1937	FEL	40.49940	-104.40131	1.8	4834	NWSE
17	WELLS RANCH USX AA 11-16P	550	FSL	847	FEL	40.49536	-104.39722	2.0	4829	SESE

DATE: 10/6/2014
PROJECT#: 2014168