

Radial Bond Log  
Gamma-Ray  
CCL

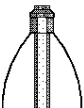
Company		KERR-McGEE OIL & GAS ONSHORE LP					
Well		SARCHET 10-28					
Field		WATTENBERG					
County		WELD					
State		COLORADO					
Location:		APL # : 05-123-23813					
SHL: 2142' FSL 2012' FEL NW/SE LAT: 40.19460 & LONG: -104.78010 SEC 28 TWP 3N RGE 66W		Other Services					
Permanent Datum		GL	Elevation				
Log Measured From		KB 12'	4982'				
Drilling Measured From		KB	Elevation				
Date		1-12-2015					
Run Number		ONE					
Depth Driller		7605'					
Depth Logger		3907'					
Bottom Logged Interval		3904'					
Top Log Interval		Surface					
Open Hole Size		7 7/8"					
Type Fluid		WATER					
Density / Viscosity		1.0					
Max. Recorded Temp.		125					
Estimated Cement Top		538'					
Time Well Ready		N/A					
Time Logger on Bottom		N/A					
Equipment Number		3812					
Location		GREELEY					
Recorded By		A.STEERMAN					
Witnessed By		F.RIVERA					
Borehole Record		Tubing Record					
Run Number	Bit	From	To	Size	Weight	From	To
ONE	12.25	0	736'				
TWO	7.88	736'	7309'				
Casing Record	Size	Wgt/Ft	Top	Bottom			
Surface String	8 5/8"	24#	0	726'			
Prot. String							
Production String	4 1/2"	11.6#	0	7597'			
Liner							

<<< Fold Here >>>

All interpretations are opinions based on inferences from electrical or other measurements and we cannot and do not guarantee the accuracy or correctness of any interpretation, and we shall not, except in the case of gross or willful negligence on our part, be liable or responsible for any loss, costs, damages, or expenses incurred or sustained by anyone resulting from any interpretation made by any of our officers, agents or employees. These interpretations are also subject to our general terms and conditions set out in our current Price Schedule.

Comments

NOT CORRELATED  
LOGGED TO VERIFY CEMENT  
  
THANK YOU FOR USING WARRIOR.

Sensor	Offset (ft)	Schematic	Description	Len (ft)	OD (in)	Wt (lb)
						

Tool Name	Length (ft)	Weight (lb)	OD (in)	Notes
CENT #2 -Probe (PTS_MONO)	2.75	2.75	35.00	
HEADVOLT	16.00			
IntTemp	14.58			
WVFS3FT	11.33			
WVFCAL	11.33			
WVFS1	11.33			
WVFS2	11.33			
WVFS3	11.33			
WVFS4	11.33			
WVFS5	11.33			
WVFS6	11.33			
WVFS7	11.33			
WVFS8	11.33			
WVF5FT	10.33			
RBT-Probe (Base)	8.92	2.75	90.00	Probe Radli Bond Tool with Digital Telemetry
CENT-Probe (PT_MONO2)	2.75	2.75	35.00	
CCL	3.64			
GR-Probe (275)	4.33	2.75	30.00	Probe 2.75"
GR	0.90			

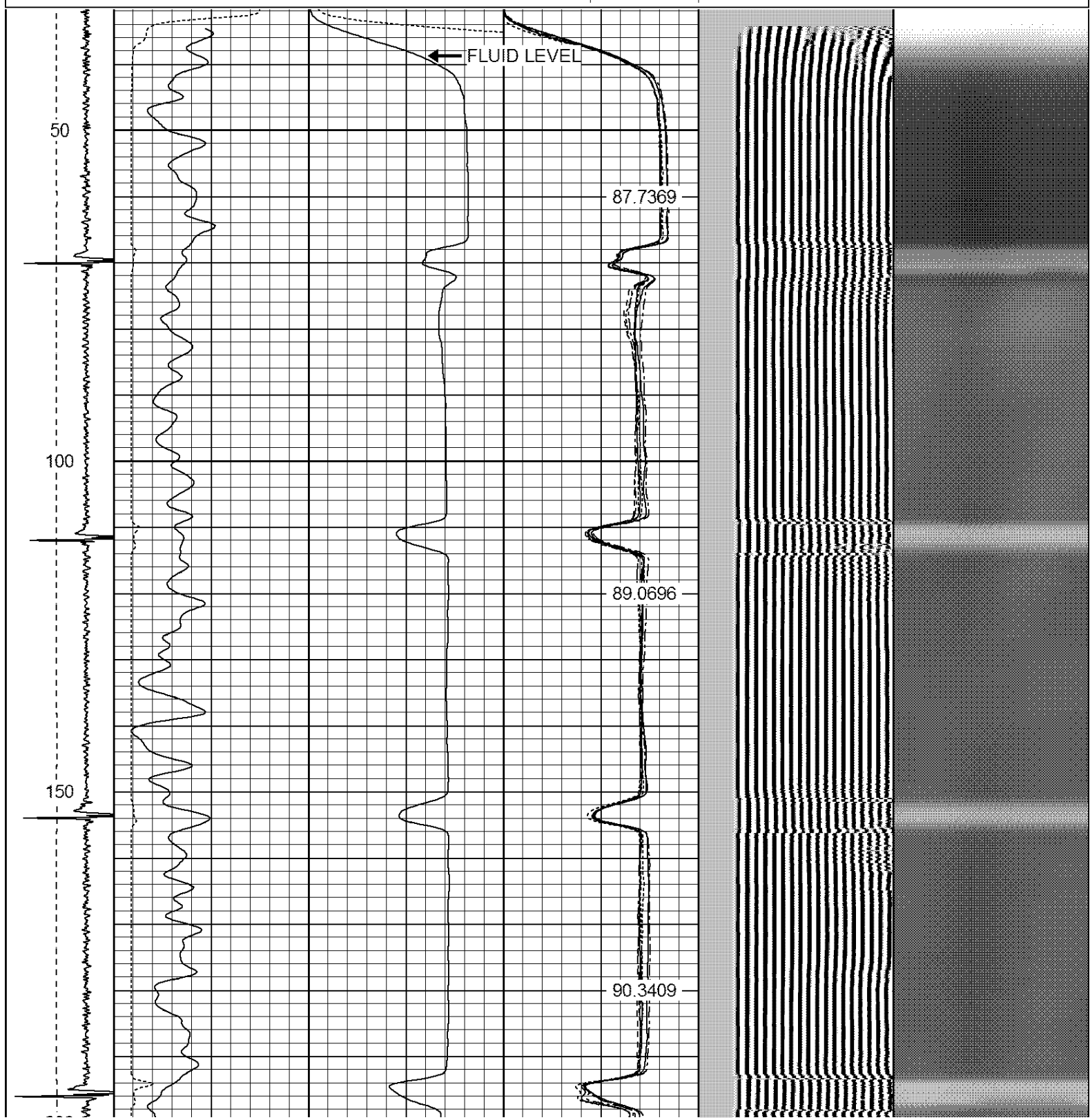
Dataset: penton 23-11.db: field/well/run1/pass3

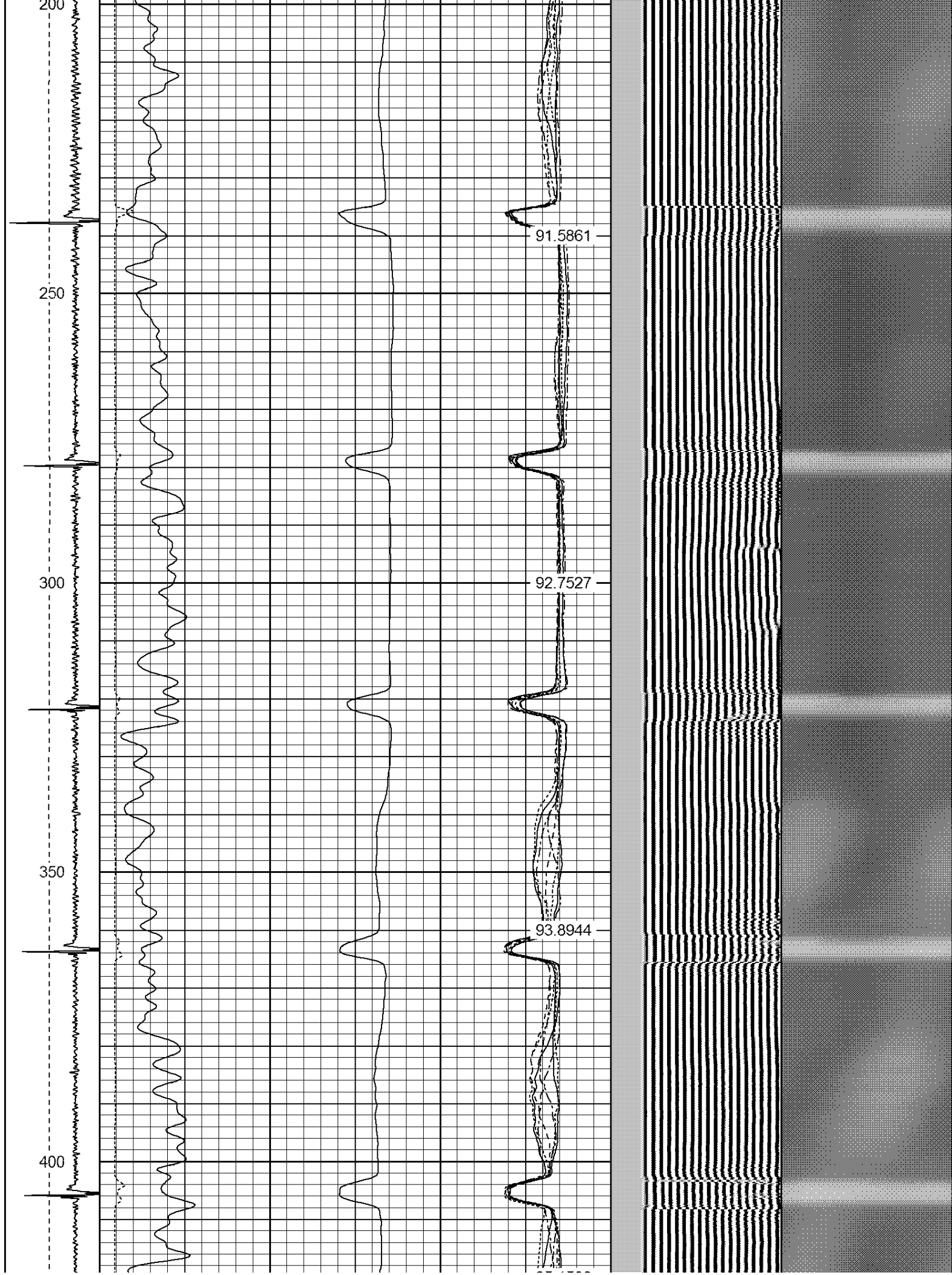
Total Length: 18.75 ft

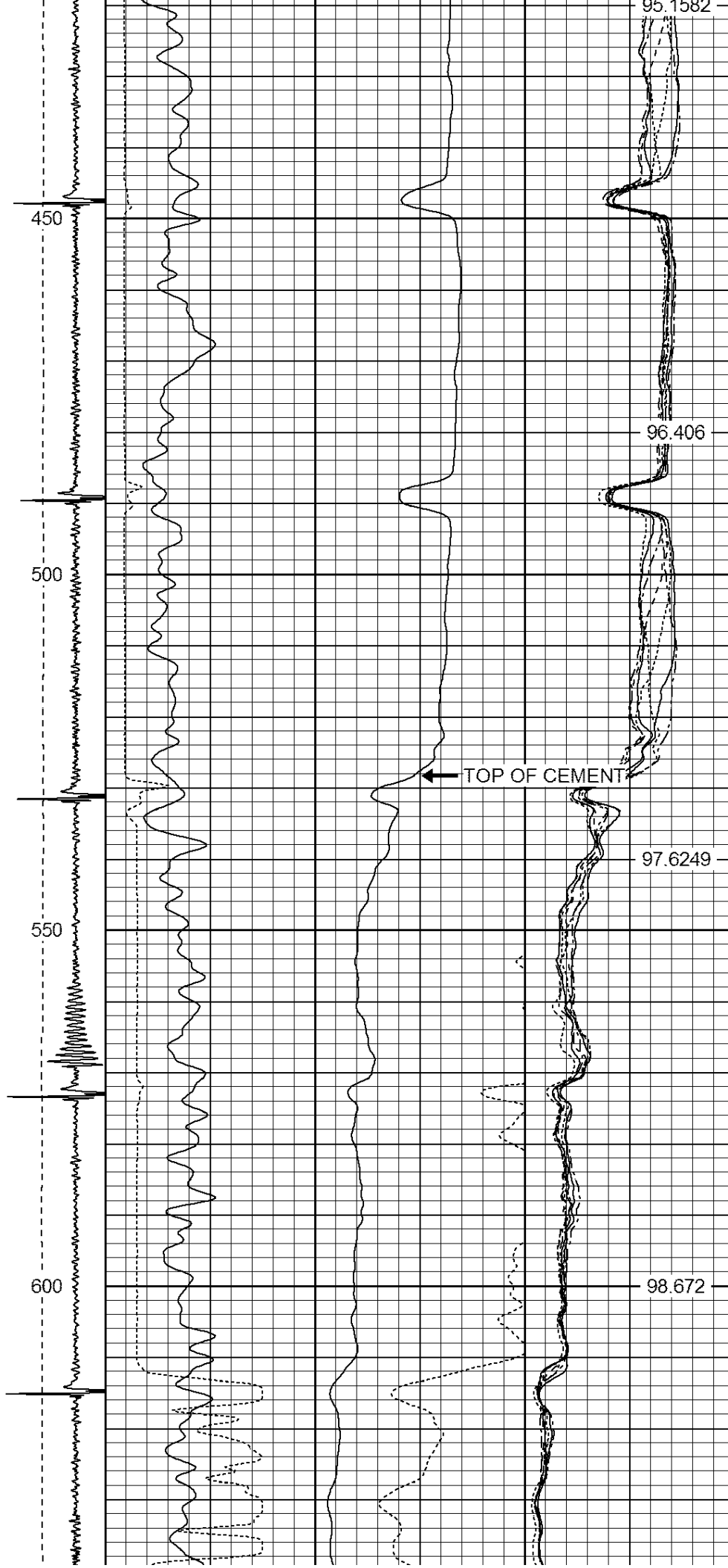
Total Weight: 190.00 lb

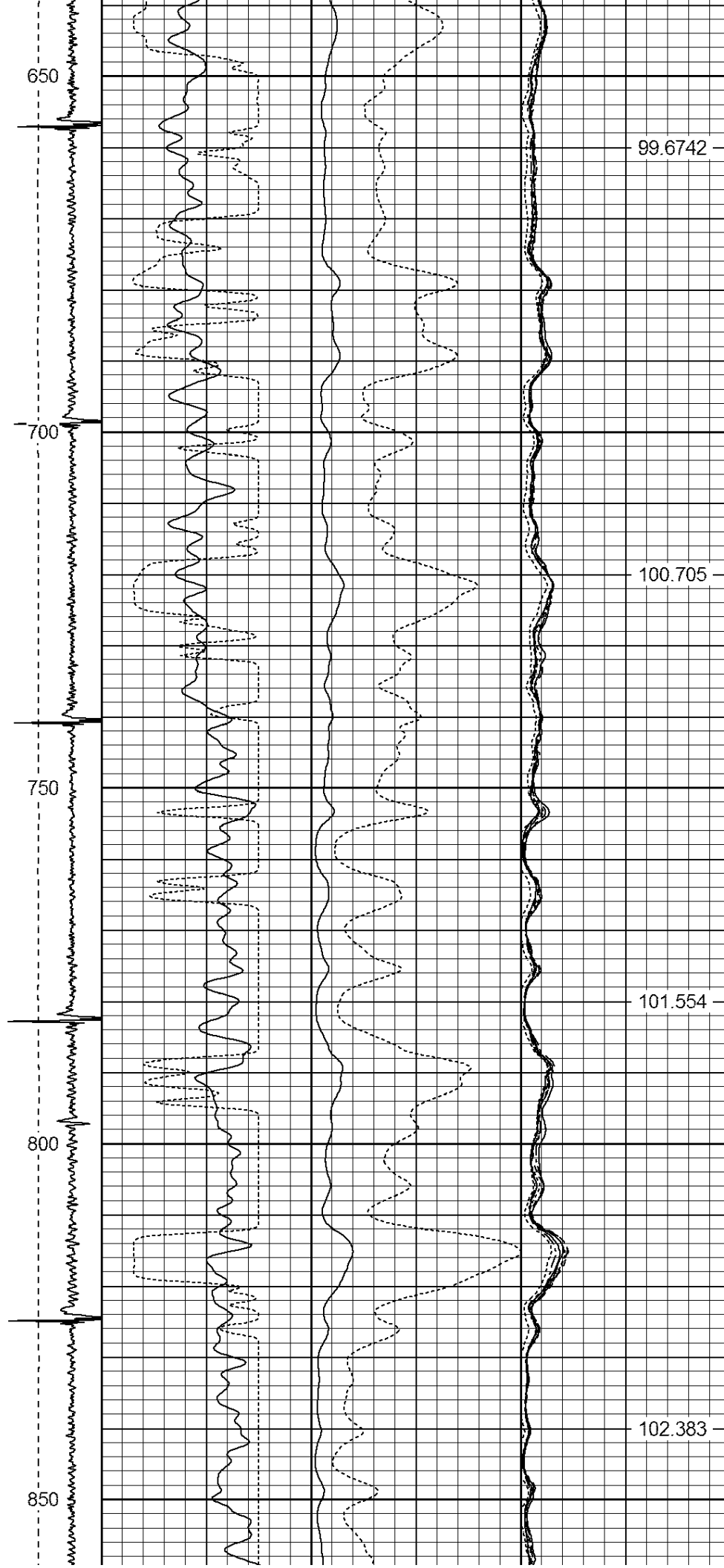
O.D. 2.75 in

-9	CCL	3	200	TT (usec)	1000	0	AMP (mV)	100	0	AMPS1	100	200	VDL	1200	1	Cement Map	8
LSPD			0	GR (GAPI)	200	0	AMPx5 (mV)	20	0	AMPS2	100				1		100
(ft/min)			200	GR (GAPI)	400				0	AMPS4	100						
0	-250								0	AMPS5	100						
									0	AMPS6	100						
									0	AMPS7	100						
									0	AMPS8	100						
										IntTemp							
										(degF)							









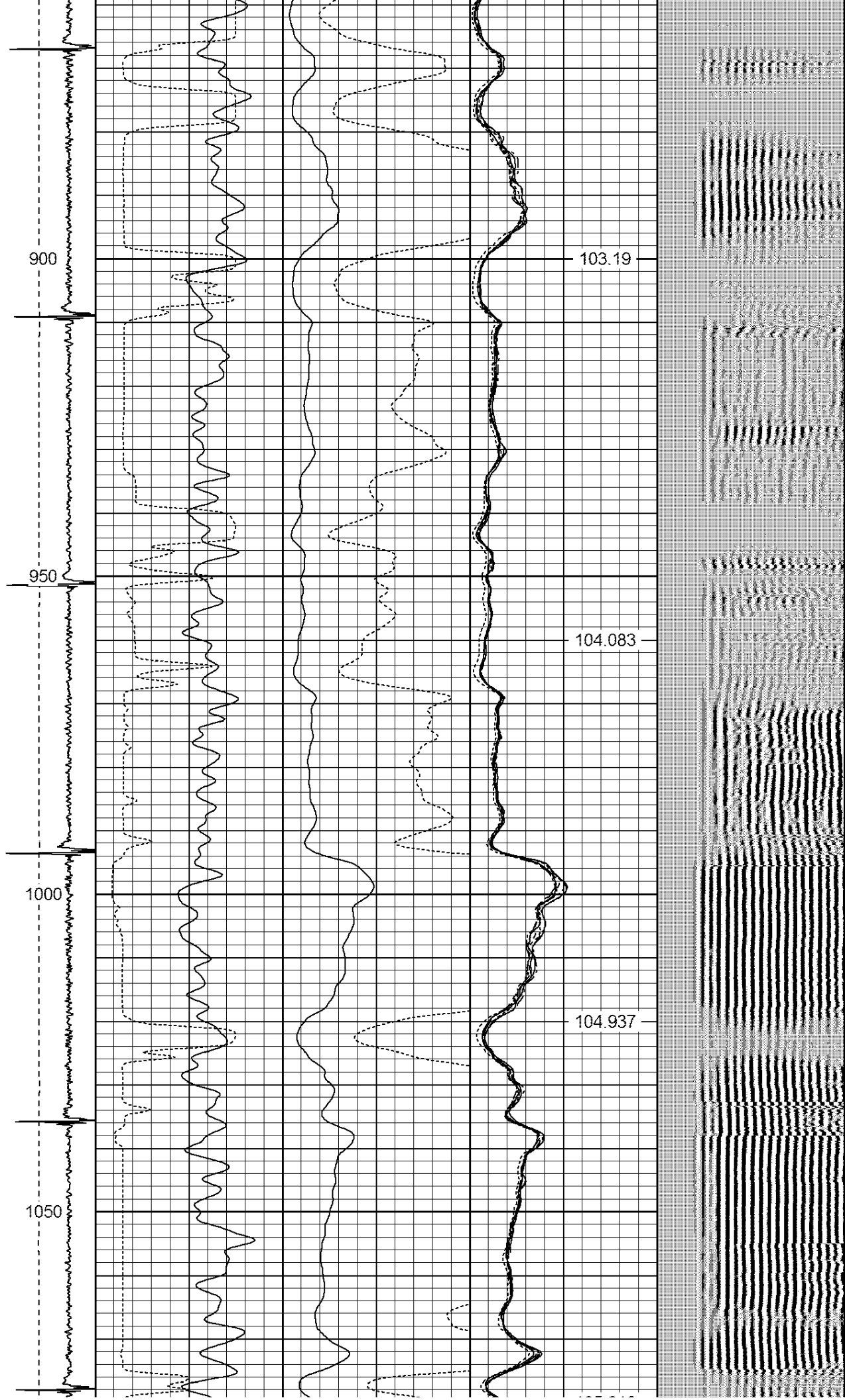
99.6742

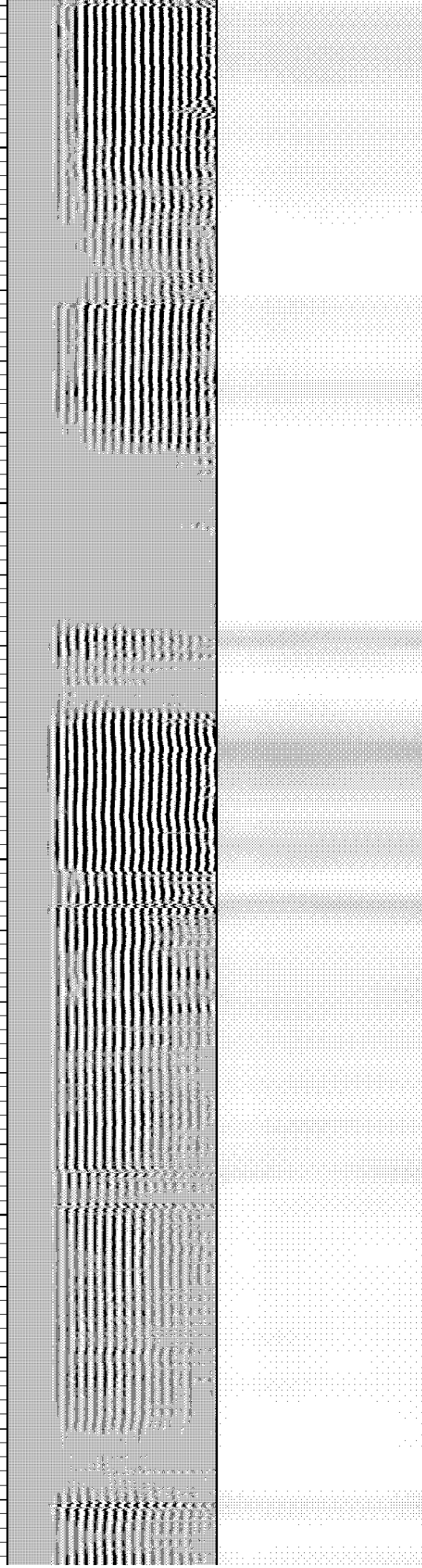
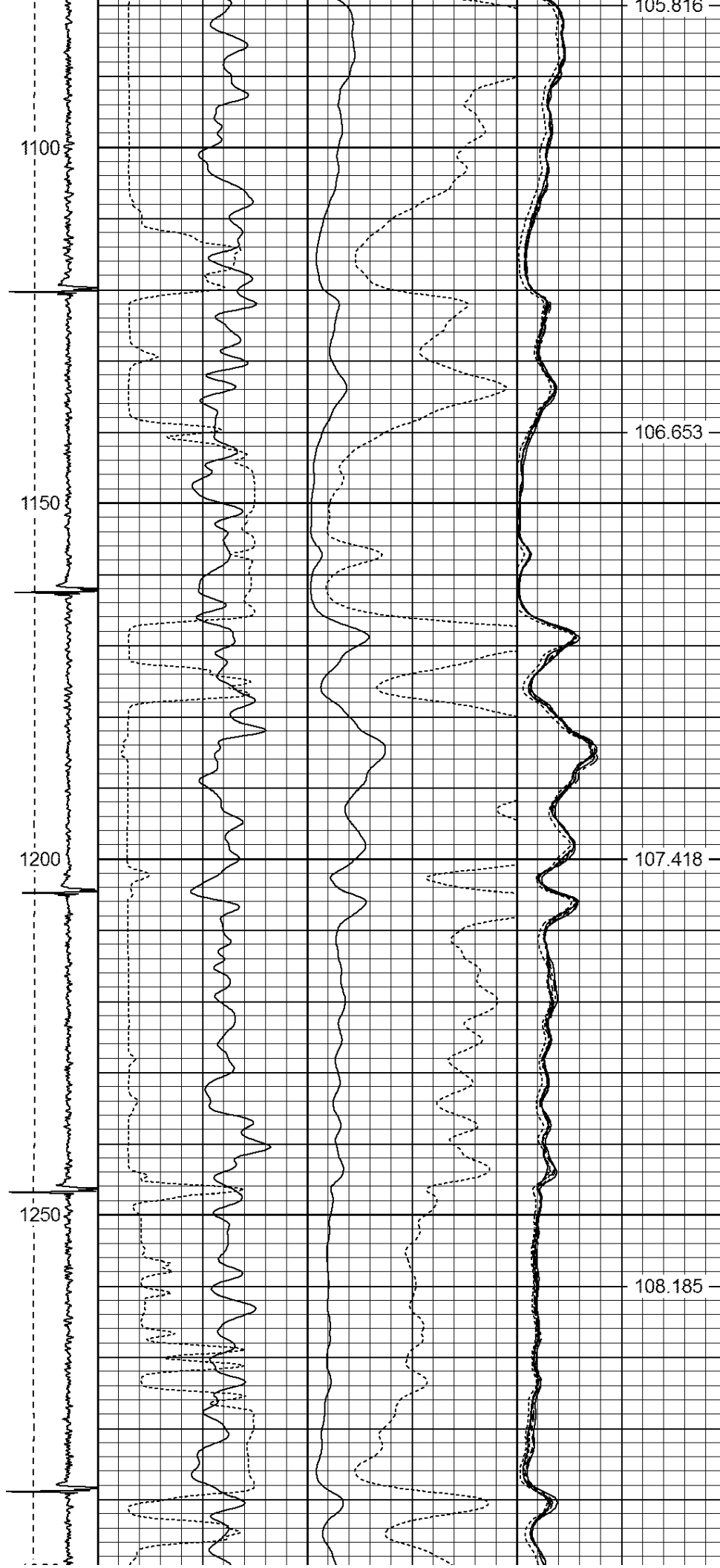
100.705

101.554

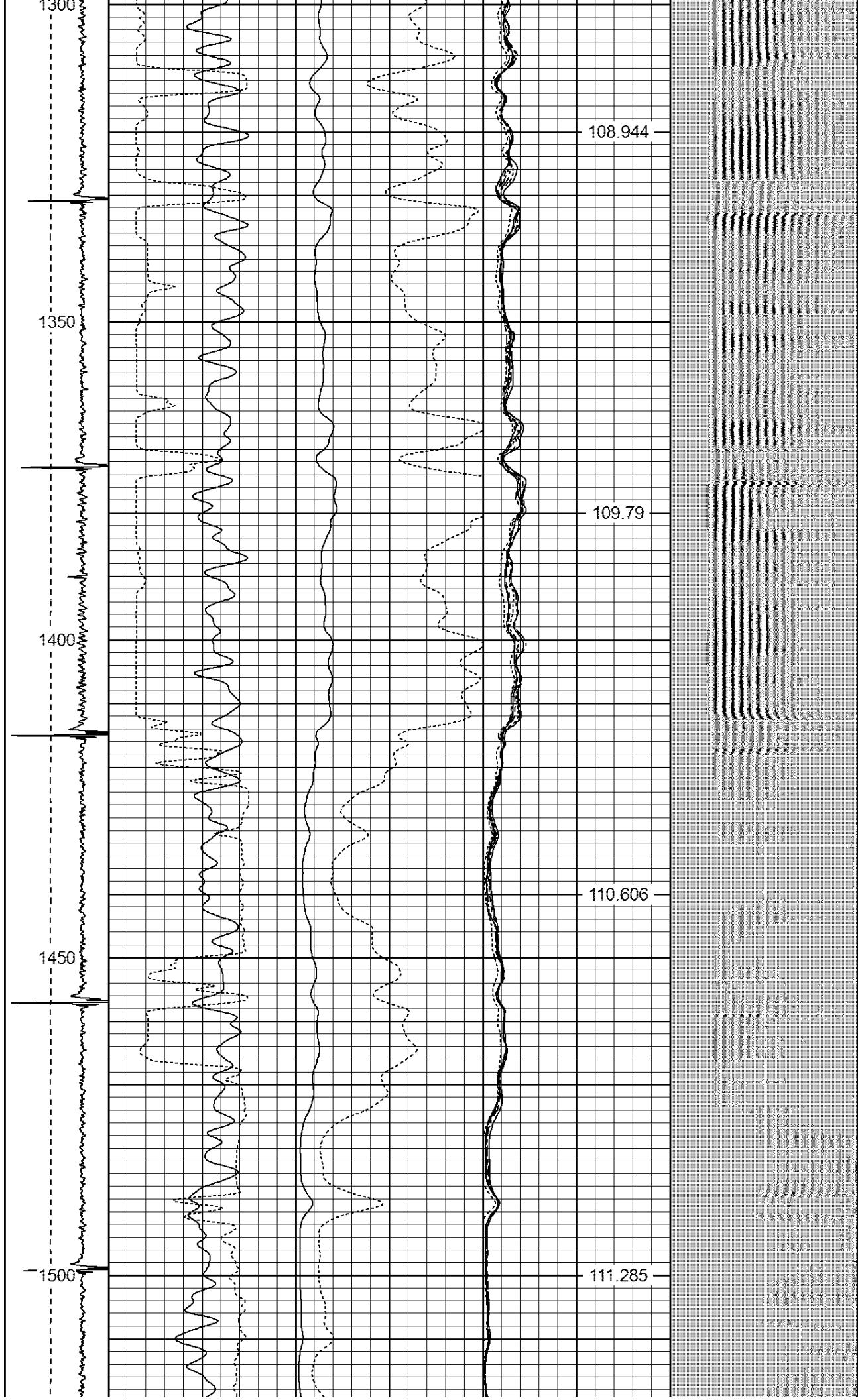
102.383

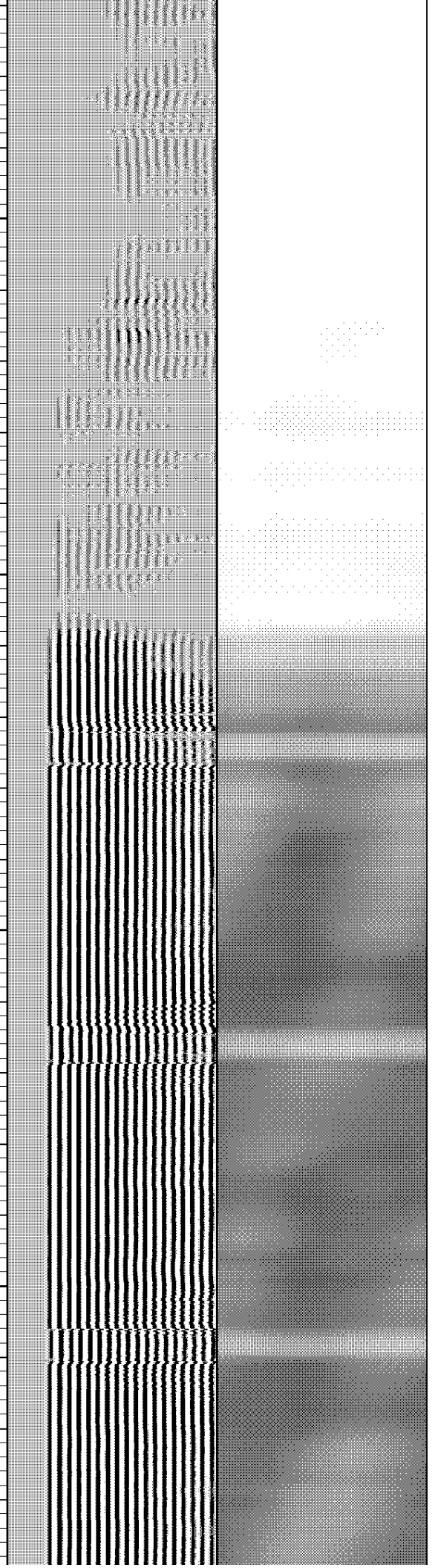
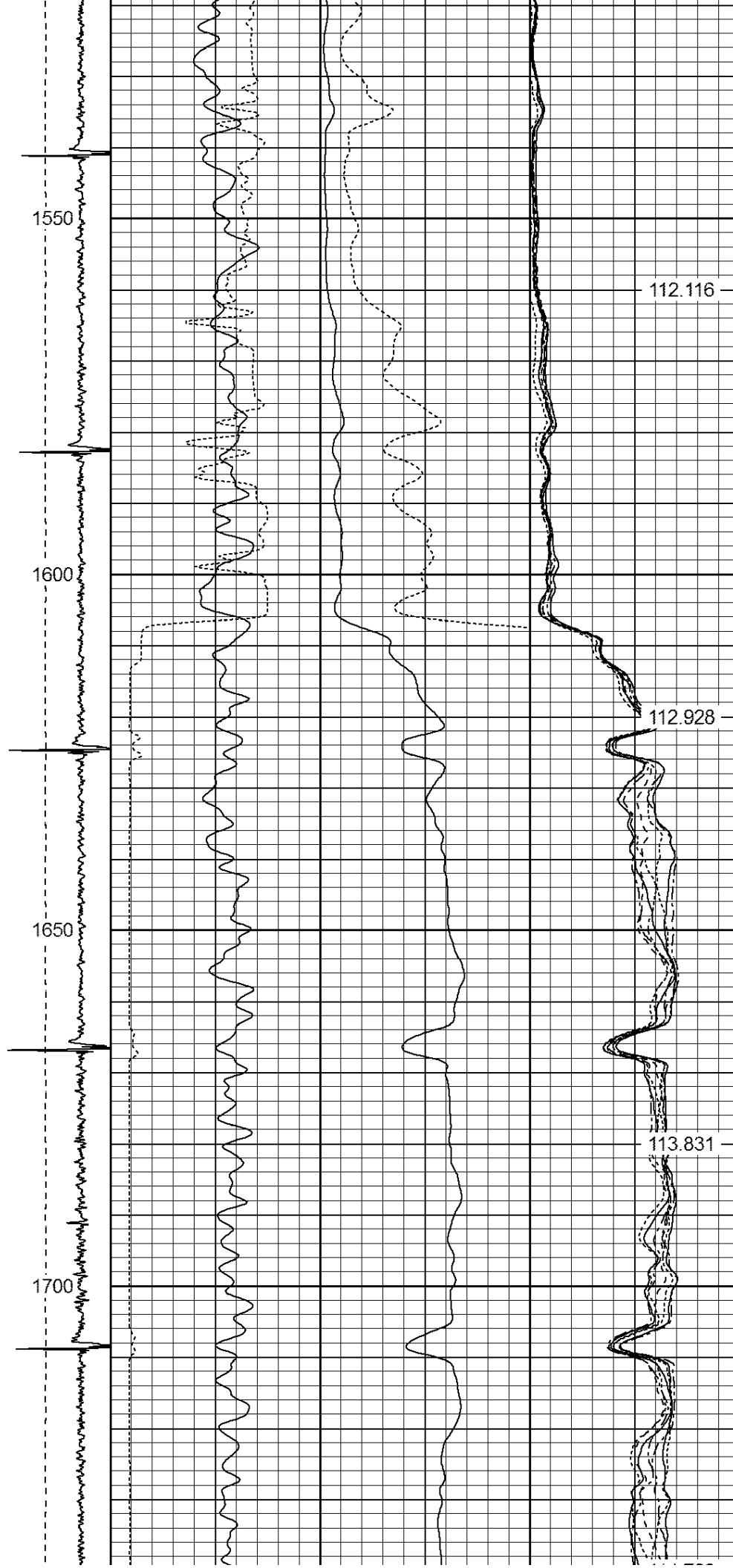




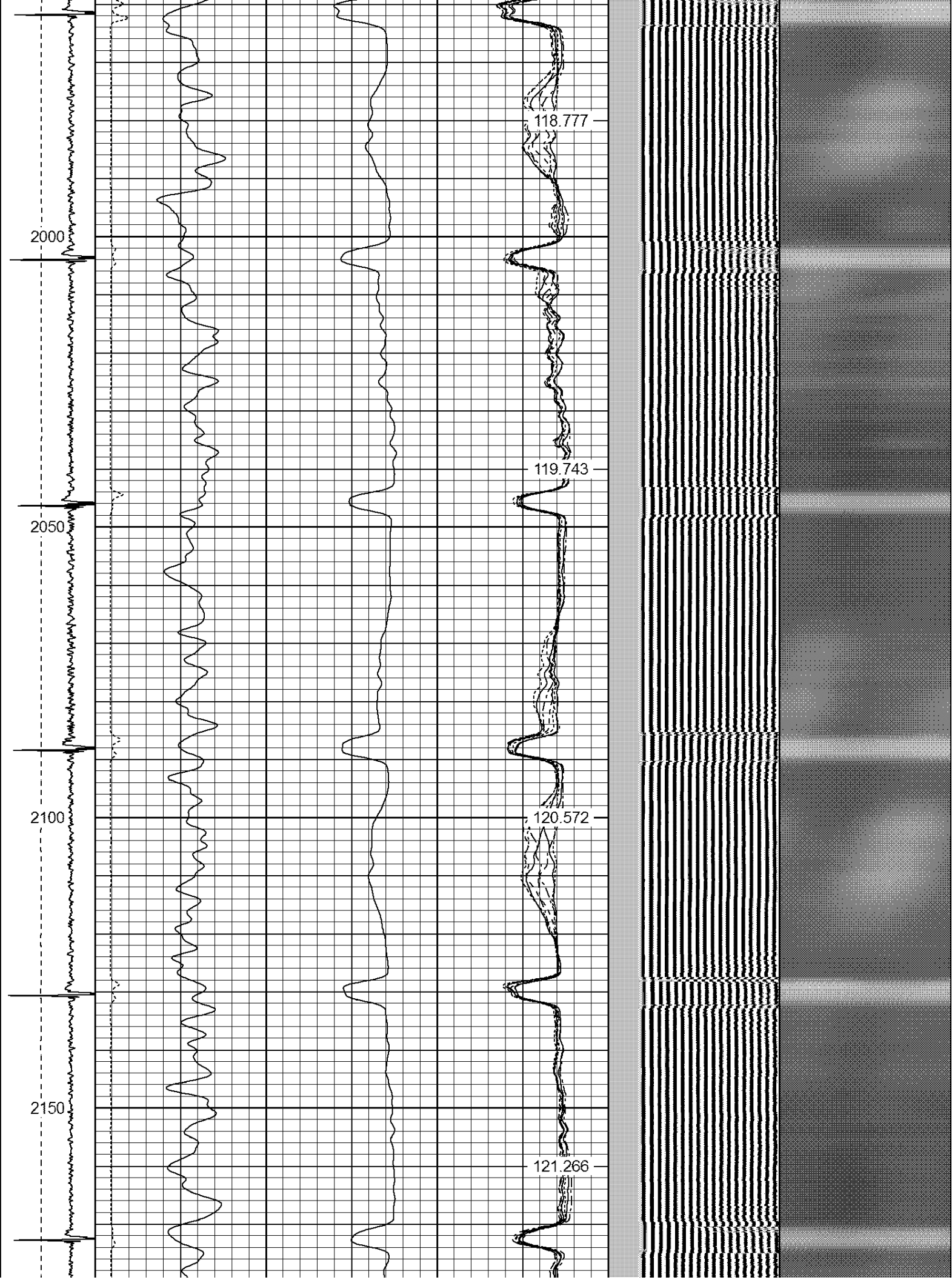




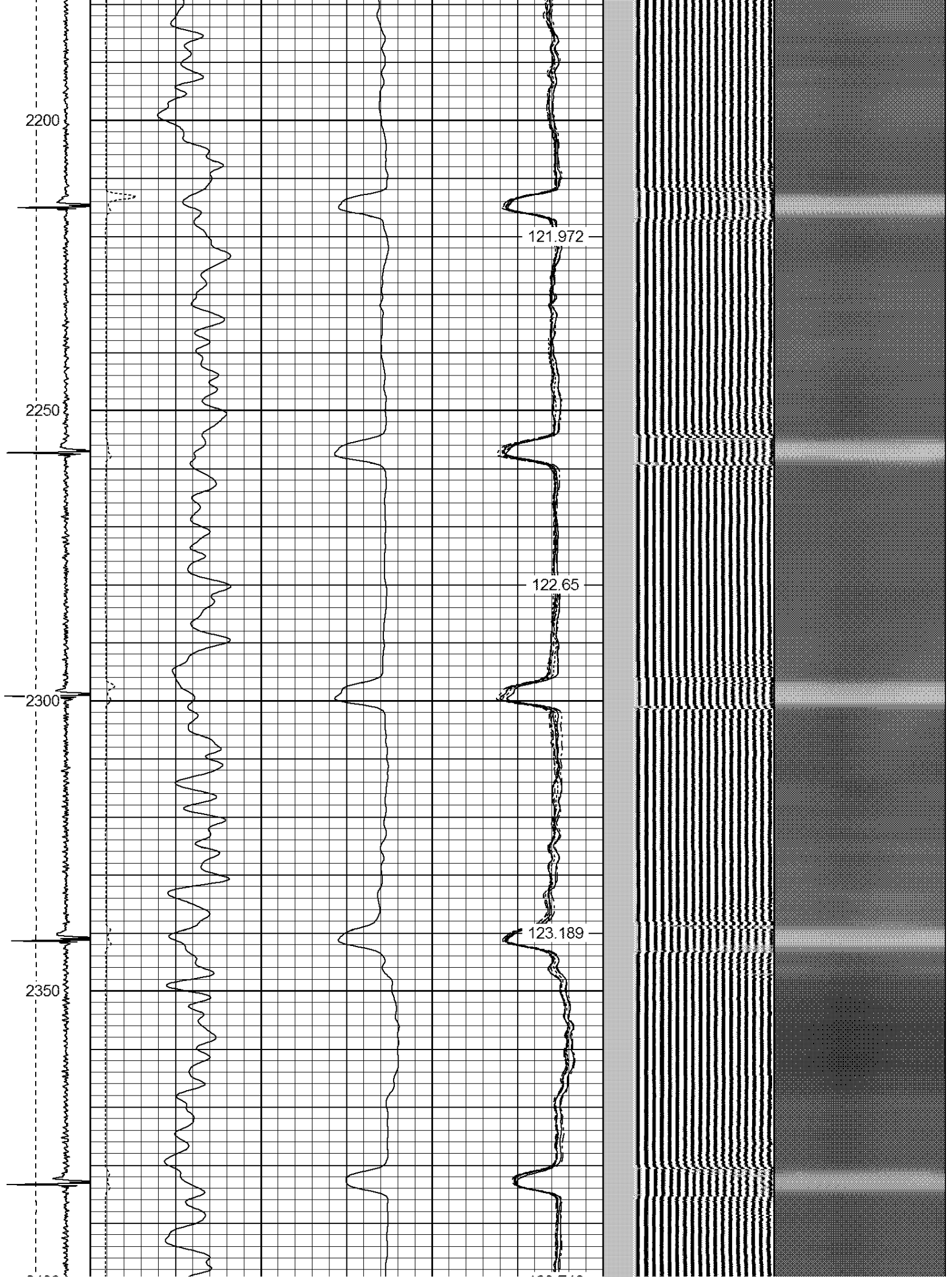


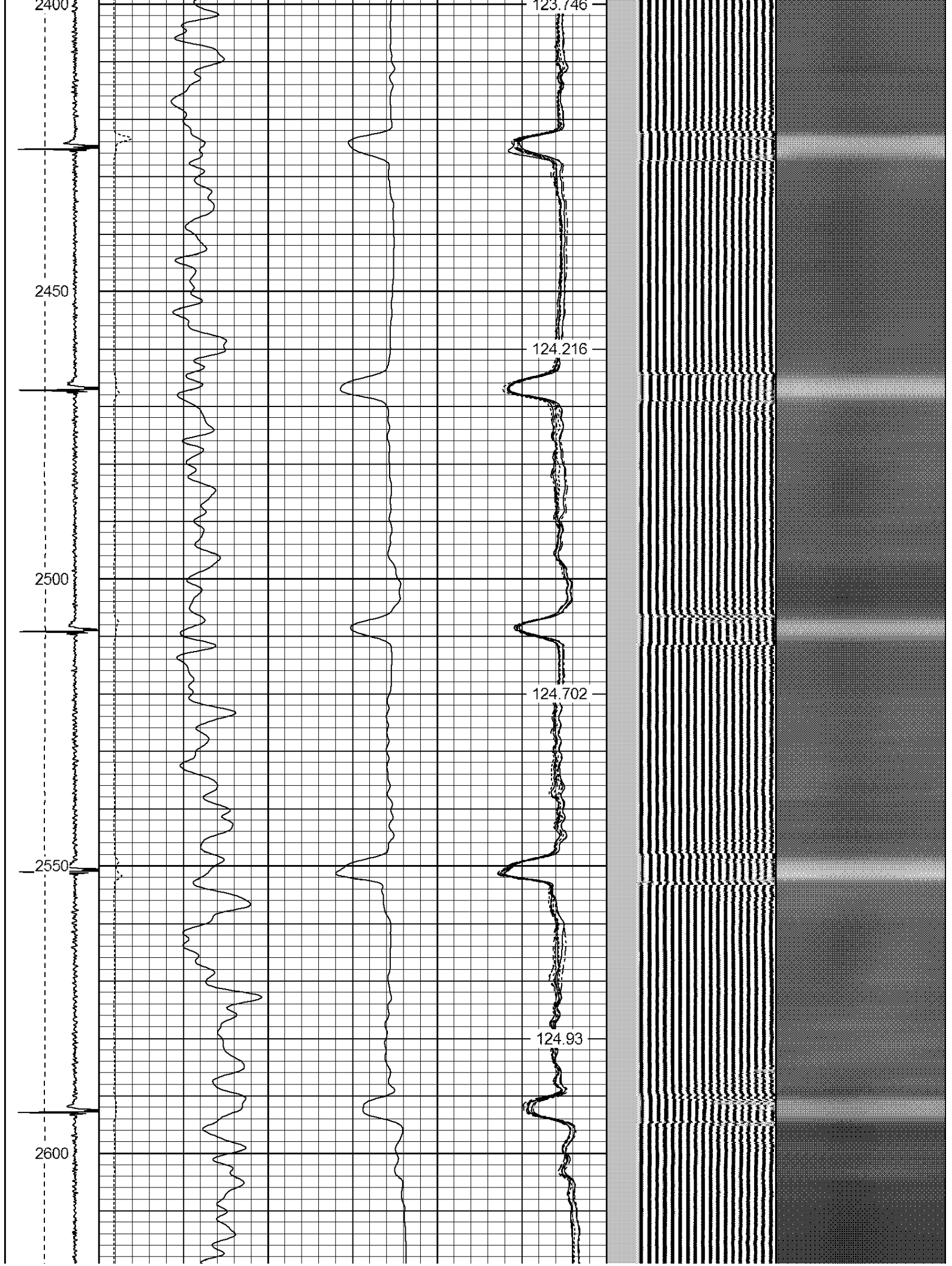




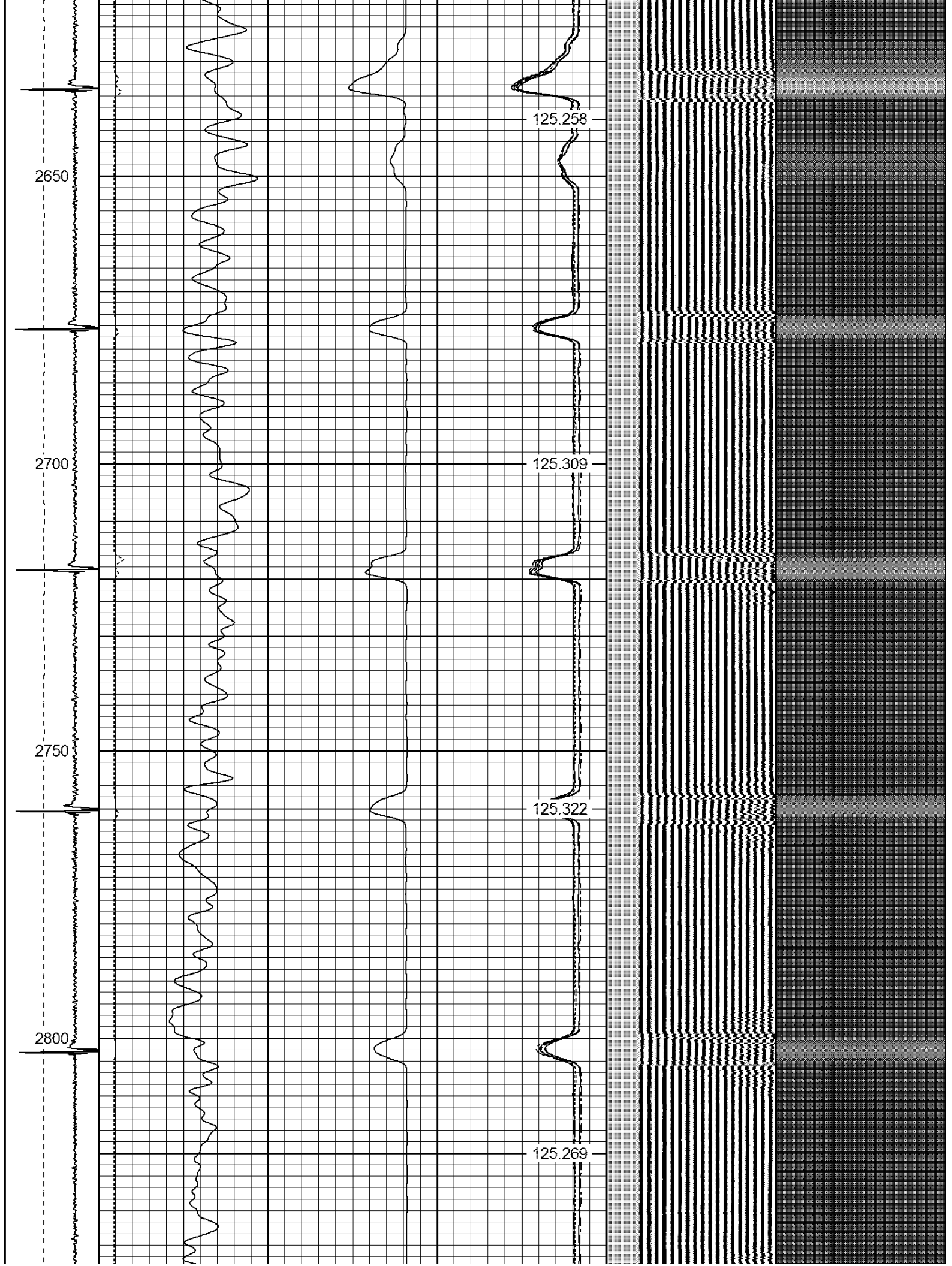


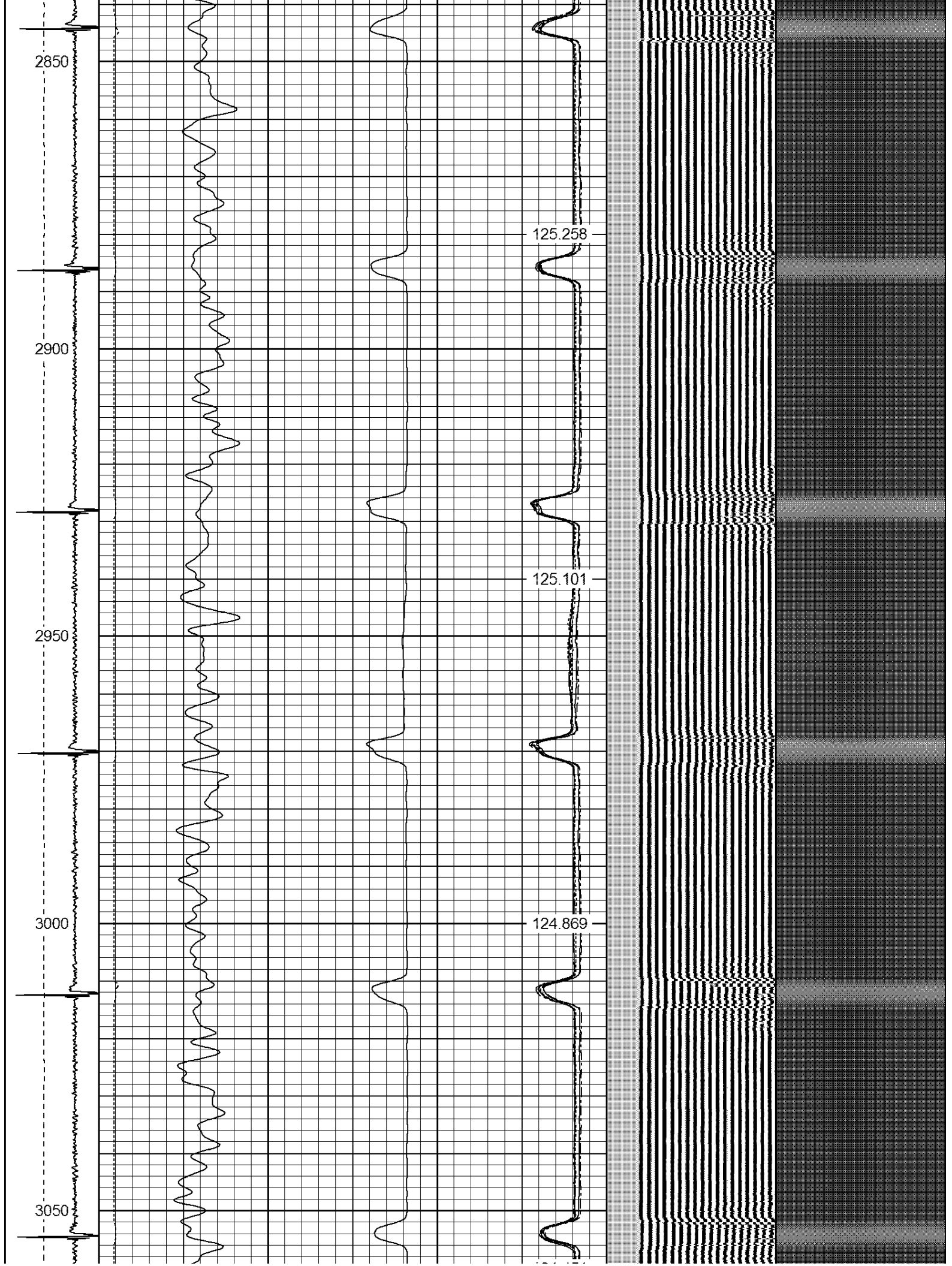


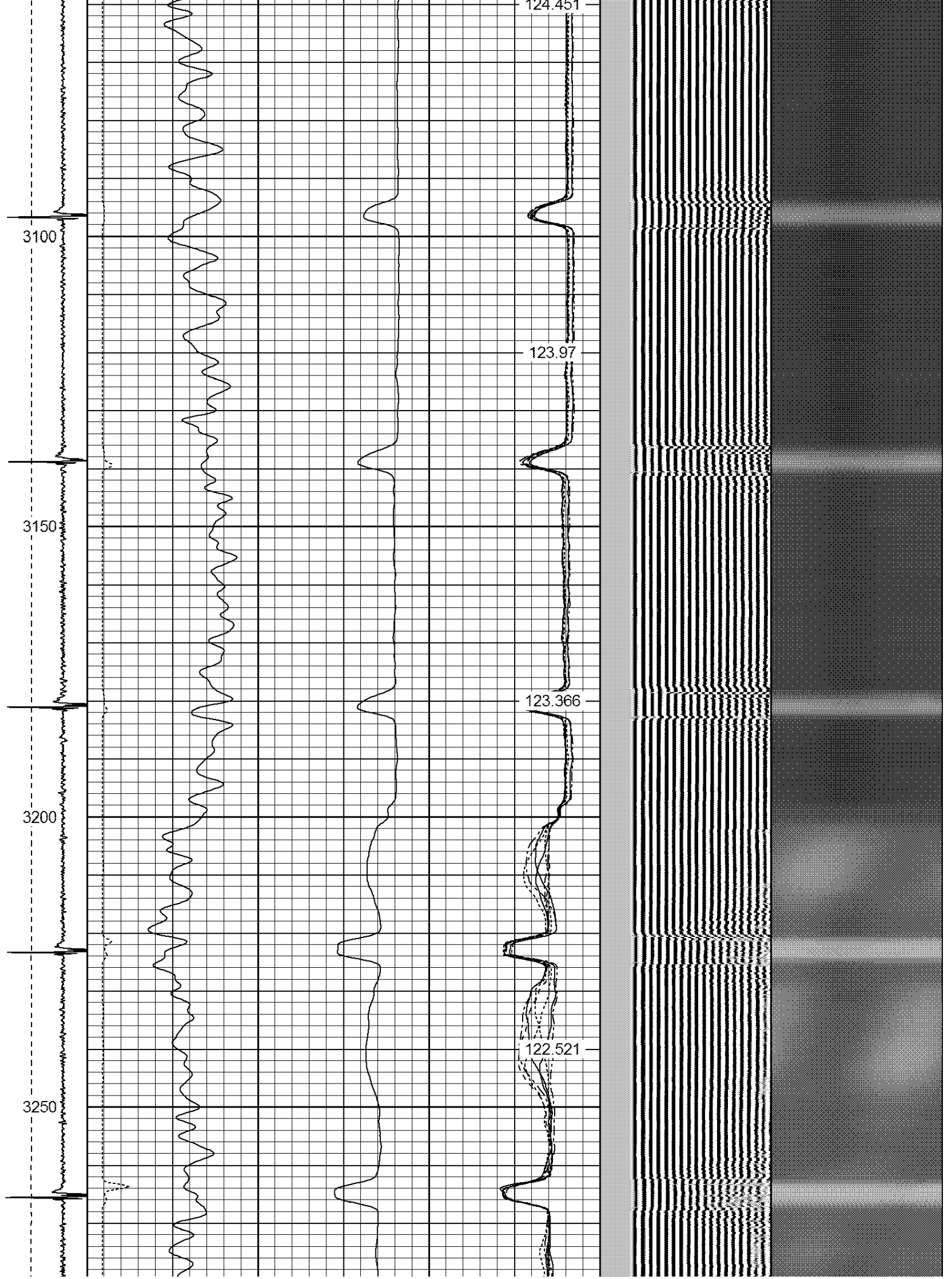


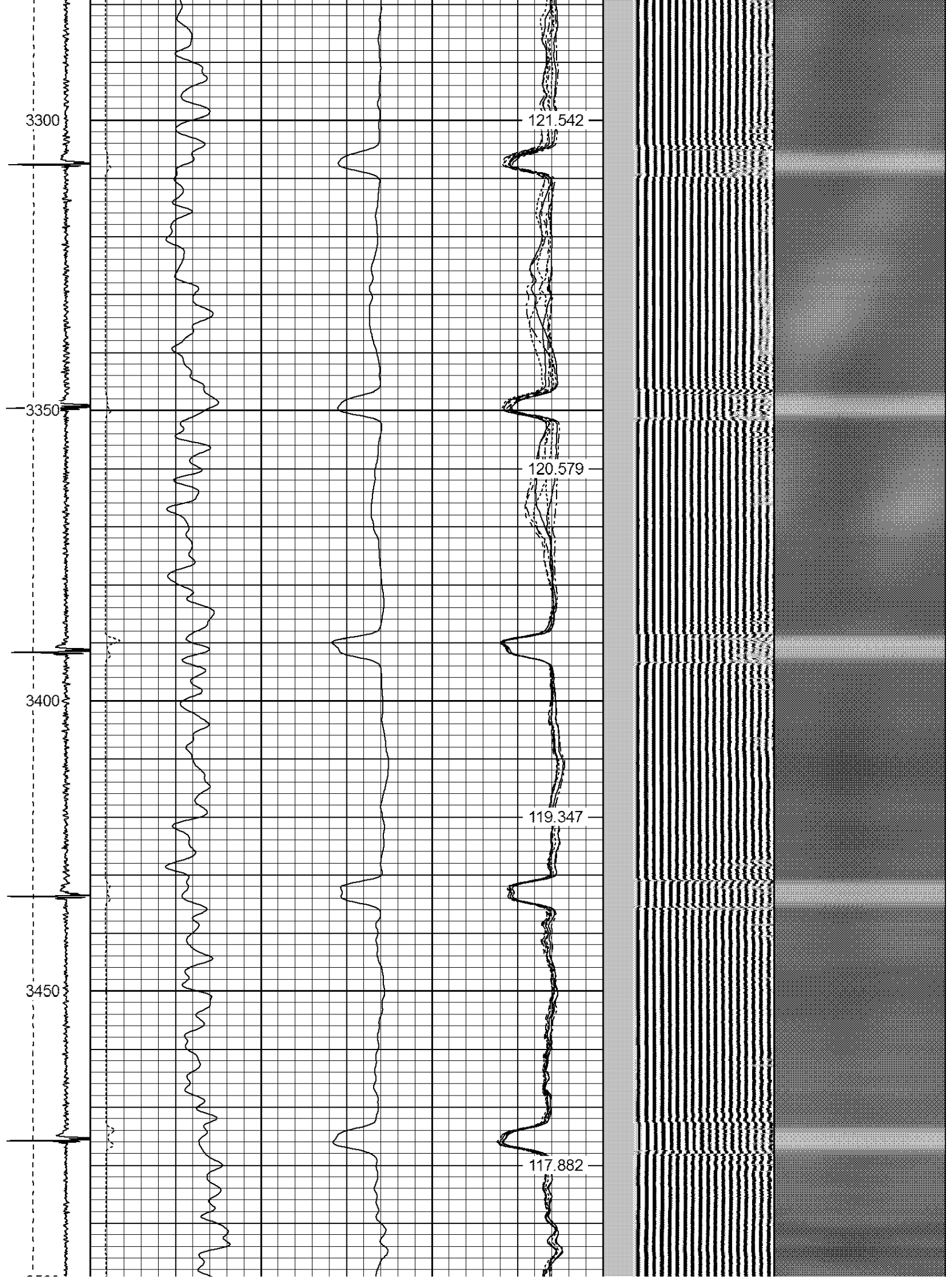




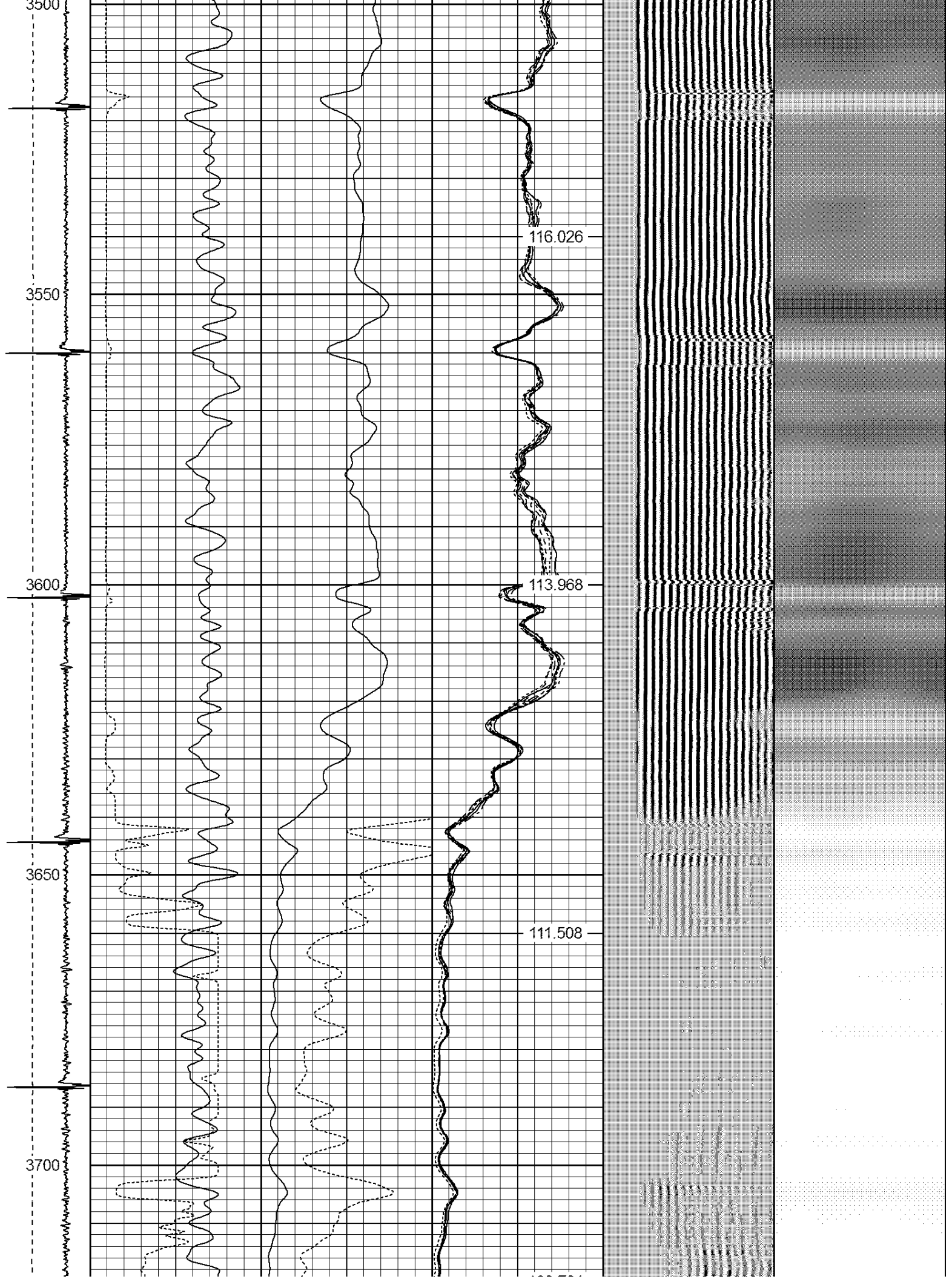


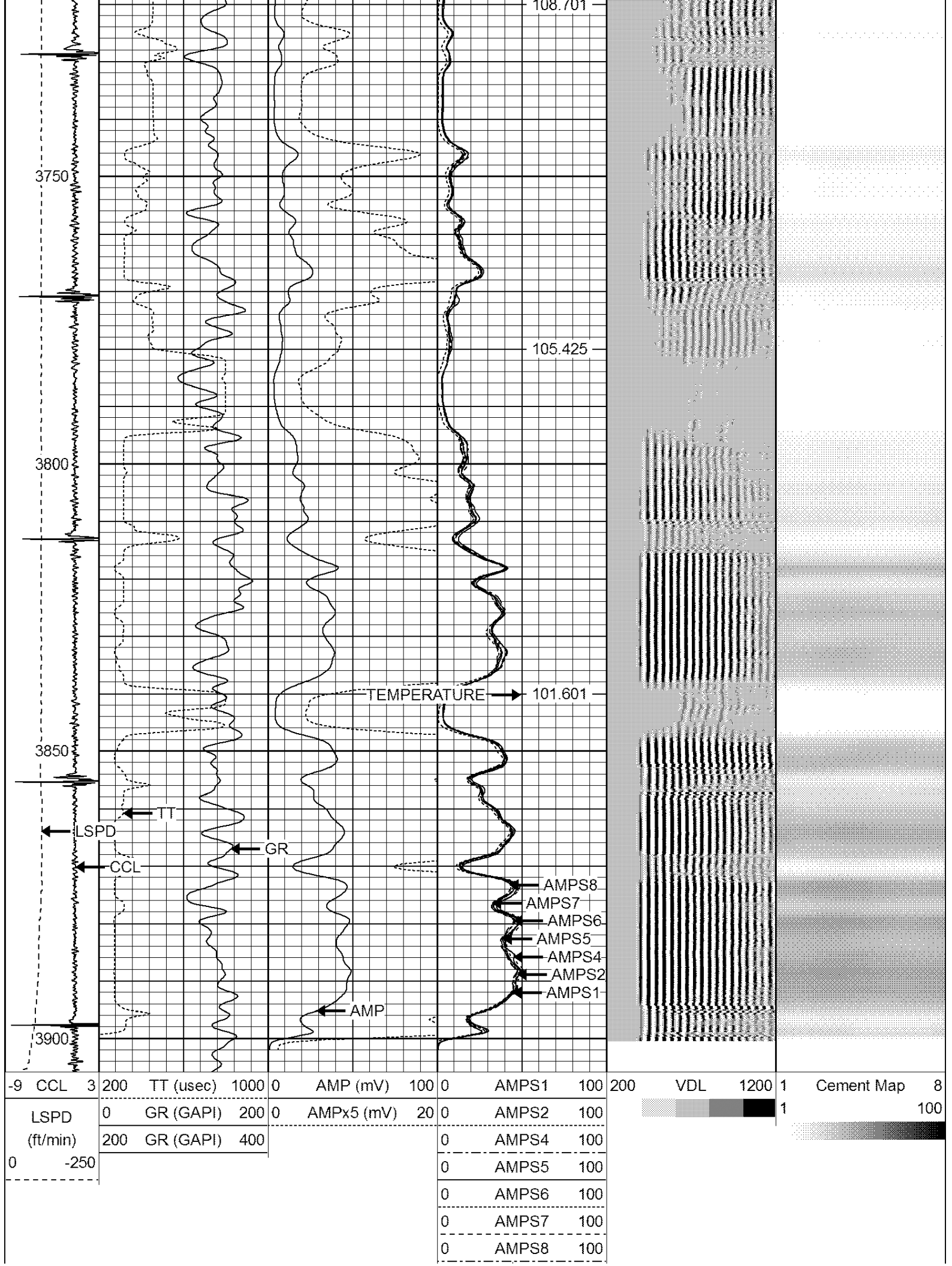








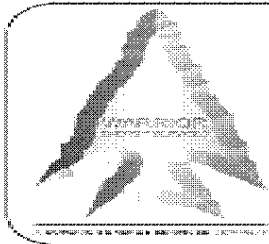




-9	CCL	3	200	TT (usec)	1000	0	AMP (mV)	100	0	AMPS1	100	200	VDL	1200	1	Cement Map	8
LSPD	0	GR (GAPI)	200	0	AMPx5 (mV)	20	0	AMPS2	100						1		100
(ft/min)	200	GR (GAPI)	400					0	AMPS4	100							
0	-250							0	AMPS5	100							
								0	AMPS6	100							
								0	AMPS7	100							
								0	AMPS8	100							



IntTemp  
(degF)



**WARRIOR**  
ENERGY SERVICES

Company KERR-McGEE OIL & GAS ONSHORE LP

Well SARCHET 10-28

Field WATTENBERG

County WELD

State COLORADO