



\\ANADARKO\2014\2014 52 RESOLUTION PROSPECT_WELLS COMPLATS\RESOLUTION 12-65-25-24\RESOLUTION FED 12-65-24-25.dwg, 1/6/2015 4:12:14 PM, ksa

\\ANADARKO\2014\2014_52_RESOLUTION_PROSPECT_WELLS_CO\PLATS\RESOLUTION 12-65-25-24\RESOLUTION FED 12-65-24-25.dwg, 1/7/2015 8:16:44 AM, njan



Benjamin J. Reenders
BENJAMIN J. REENDERS
PROFESSIONAL LAND SURVEYOR
COLORADO REGISTRATION NUMBER 48305
12/30/14

A horizontal scale bar with three vertical tick marks labeled '0', '1000'', and '2000'' from left to right. The bar is divided into two main sections: the first section from 0 to 1000' is filled with a black and white checkerboard pattern, and the second section from 1000' to 2000' is solid black.

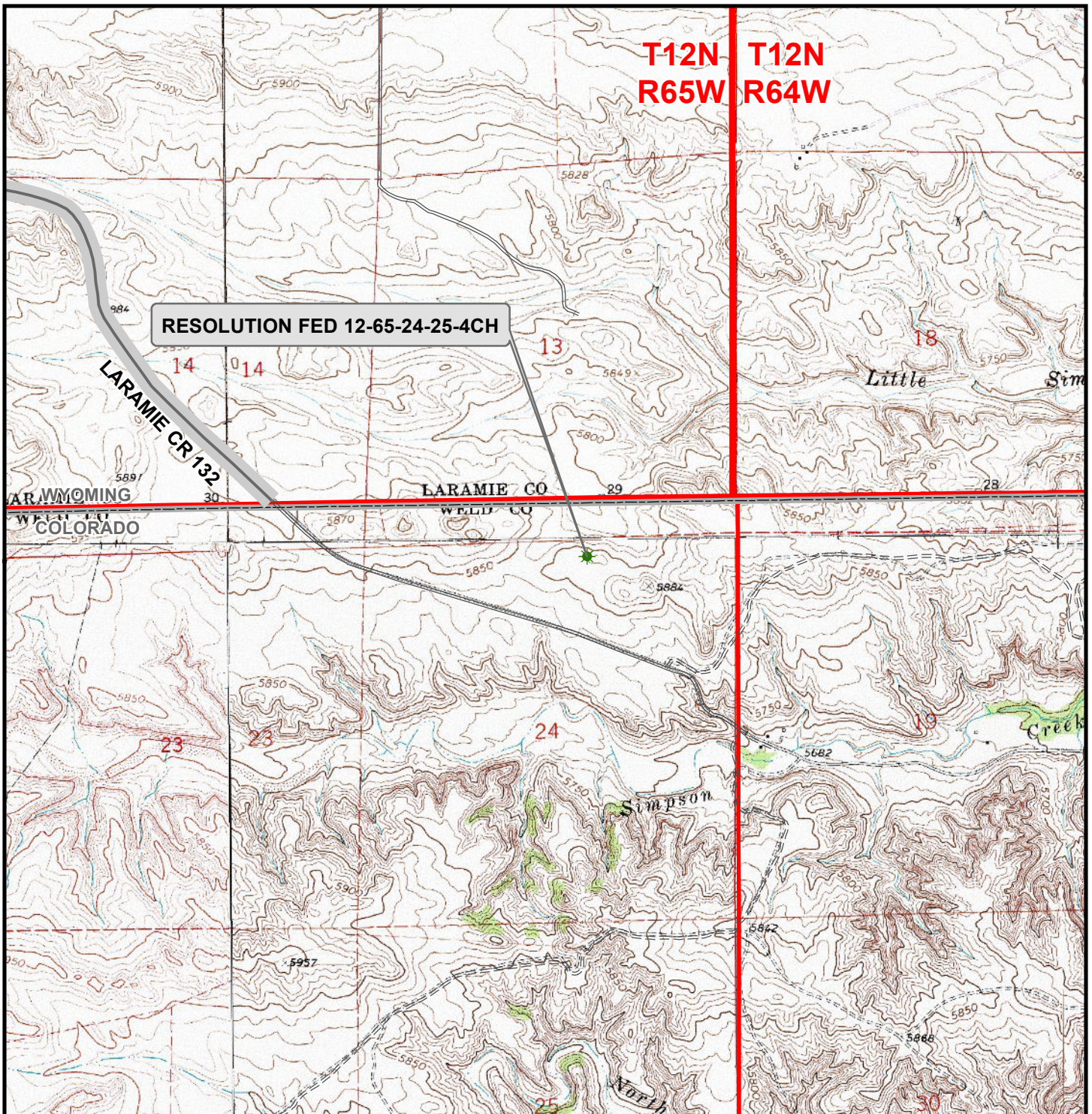
1.  INDICATES FOUND SECTION CORNER
2.  INDICATES CALCULATED CORNER
3. ELEVATION BASED ON NAVD88 (GEOID09)
4. BASIS OF BEARING DERIVED FROM COLORADO COORDINATE SYSTEM 1983 NORTH ZONE UNLESS OTHERWISE NOTED.
5. ALL MEASURED DISTANCES ARE GRID.
COMBINED SCALE FACTOR: .99975950
6. OPERATOR: NICK ROADIFER / PDOP = 1.5
7. SEE ADDENDUM TO WELL LOCATION CERTIFICATE FOR EXISTING IMPROVEMENTS WITHIN 500' OF THE WELL PAD.
8. WELL FOOTAGES ARE MEASURED AT RIGHT ANGLES TO THE SECTION LINES.
9. THE BOTTOM OF HOLE BEARS S01°01'29"W 9659' FROM THE SURFACE LOCATION.

RESOLUTION FED 12-65-24-25-4CH
WELL LOCATION CERTIFICATE
269' FNL & 2085' FEL NWNE (SURFACE)
LOCATED IN SECTION 24
600' FSL & 2300' FEL SWSE (BOTTOM)
LOCATED IN SECTION 25
T12N, R65W, 6TH P.M.
WELD COUNTY, COLORADO



LOVELAND OFFICE
1635 Foxtrail Drive, Suite 204
Loveland, Colorado 80538
Phone 970-776-4331

DRAFTED BY: MDZ	CHECKED BY: BJR	SHEET NO: 2 2 OF 2
DATE DRAFTED: 12/30/14	DATE SURVEYED: 12/16/14	
REVISED:	FILE NAME: 14-52	



Legend

- ★ Well - Fed - Proposed
 Road - Primitive - Existing
 Road - County - Existing
 Road - Improved - Existing
 Road - Highway - Existing

WELL PAD - RESOLUTION FED 12-65-24-25-5CH

GENERAL LOCATION MAP
RESOLUTION FED 12-65-24-25-4CH
LOCATED IN SECTION 24
T12N, R65W, 6th P.M.
WELD COUNTY, COLORADO

Anadarko E&P
Onshore LLC

1099 18th Street
 Denver, CO 80202



CONSULTING, LLC

SHERIDAN OFFICE
 2155 North Main Street
 Sheridan, Wyoming 82801
 Phone 307-674-0609

LOVELAND OFFICE
 1635 Foxtail Drive, Suite 204
 Loveland, Colorado 80538
 Phone 970-776-4331



SCALE: 1" = 2,000ft

NAD83 CO-Nft

DRAWN: TL

DATE: 30 Dec 2014

REVISED:

DATE: