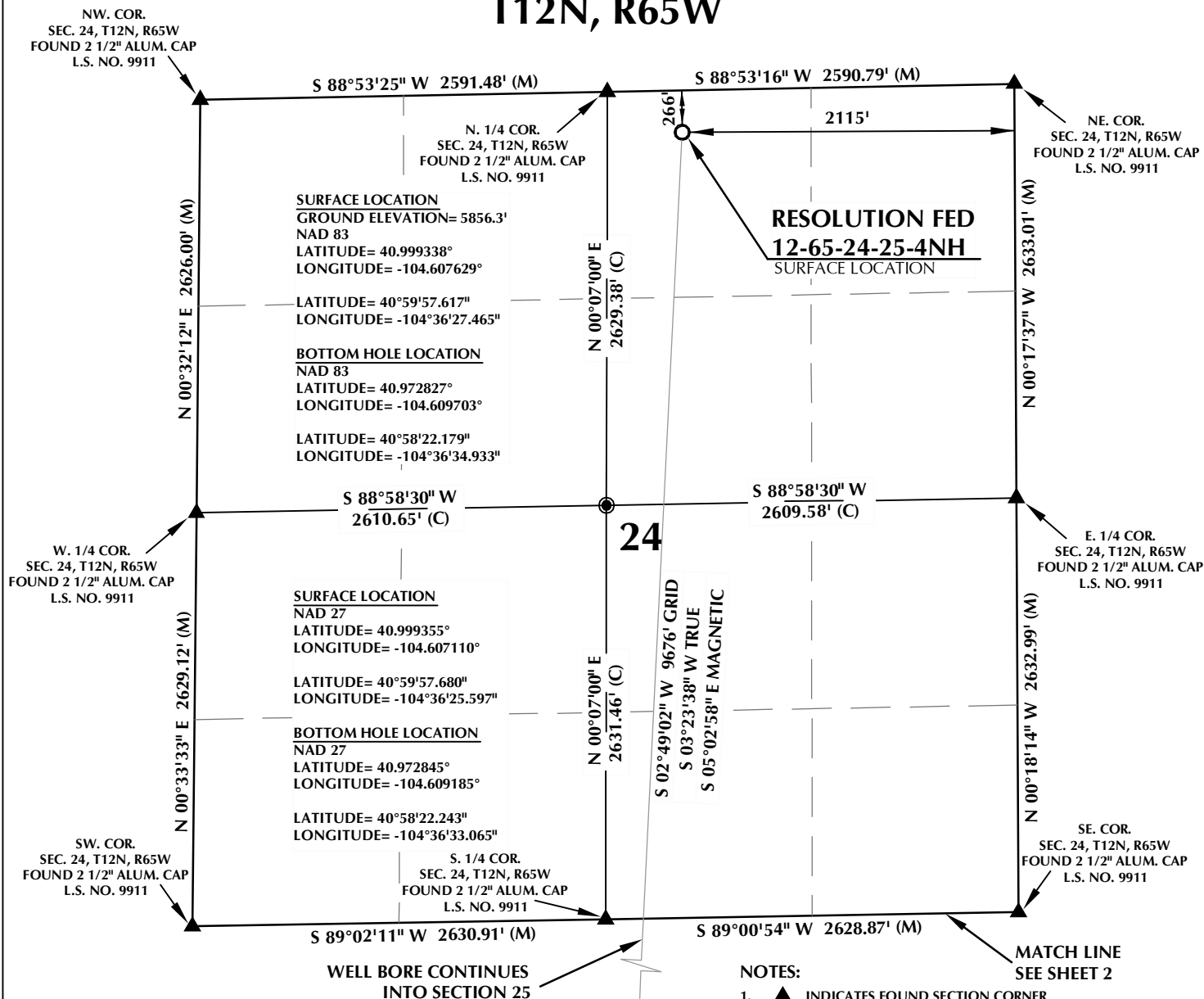


# T12N, R65W



## CERTIFICATE OF SURVEYOR:

THIS IS TO CERTIFY THAT THE ABOVE PLAT WAS PREPARED FROM FIELD NOTES OF ACTUAL SURVEY MADE BY ME OR UNDER MY SUPERVISION AND THAT THE SAME ARE TRUE AND CORRECT TO THE BEST OF MY KNOWLEDGE AND BELIEF. THIS CERTIFICATE DOES NOT REPRESENT A LAND SURVEY PLAT OR IMPROVEMENT SURVEY PLAT AS DEFINED BY C.S. 38-51-102 AND CANNOT BE RELIED UPON TO DETERMINE OWNERSHIP.

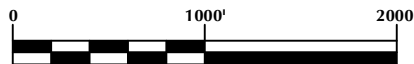
*Benjamin J. Reenders*  
BENJAMIN J. REENDERS  
PROFESSIONAL LAND SURVEYOR  
COLORADO REGISTRATION NUMBER 4836

NOTICE:  
ACCORDING TO COLORADO STATE LAW YOU MUST COMMENCE ANY LEGAL ACTION BASED UPON ANY DEFECT IN THIS SURVEY WITHIN THREE YEARS AFTER YOU FIRST DISCOVER SUCH DEFECT. IN NO EVENT MAY ANY ACTION BASED UPON ANY DEFECT IN THIS SURVEY BE COMMENCED MORE THAN TEN YEARS FROM THE DATE ON THE CERTIFICATION SHOWN HEREON.

NOTE:  
MAGNETIC NORTH IS CURRENT AS OF 1/5/2015.  
MAGNETIC NORTH CHANGES WEST 0°06' PER YEAR.

## NOTES:

- ▲ INDICATES FOUND SECTION CORNER
- INDICATES CALCULATED CORNER
- ELEVATION BASED ON NAVD88 (GEOID09)
- BASIS OF BEARING DERIVED FROM COLORADO COORDINATE SYSTEM 1983 NORTH ZONE UNLESS OTHERWISE NOTED.
- ALL MEASURED DISTANCES ARE GRID.  
COMBINED SCALE FACTOR: .99975950
- OPERATOR: NICK ROADIFER / PDOP = 1.5
- SEE ADDENDUM TO WELL LOCATION CERTIFICATE FOR EXISTING IMPROVEMENTS WITHIN 500' OF THE WELL PAD.
- WELL FOOTAGES ARE MEASURED AT RIGHT ANGLES TO THE SECTION LINES.
- THE BOTTOM OF HOLE BEARS S02°49'02"W 9676' FROM THE SURFACE LOCATION.



## WELL PAD - RESOLUTION FED 12-65-24-25-5CH

**RESOLUTION FED 12-65-24-25-4NH**  
**WELL LOCATION CERTIFICATE**  
266' FNL & 2115' FEL NWNE (SURFACE)  
LOCATED IN SECTION 24  
600' FSL & 2633' FEL SWSE (BOTTOM)  
LOCATED IN SECTION 25  
T12N, R65W, 6TH P.M.  
WELD COUNTY, COLORADO

**Anadarko E&P**  
**Onshore LLC**  
1099 18th Street  
Denver, Colorado 80202



## CONSULTING, LLC

**SHERIDAN OFFICE**  
2155 North Main Street  
Sheridan, Wyoming 82801  
Phone 307-674-0609

**LOVELAND OFFICE**  
1635 Foxtrail Drive, Suite 204  
Loveland, Colorado 80538  
Phone 970-776-4331

DRAFTED BY: MDZ	CHECKED BY: BJR	SHEET NO:
DATE DRAFTED: 12/30/14	DATE SURVEYED: 12/16/14	1
REVISED:	FILE NAME: 14-52	1 OF 2





\\ANADARKO\2014\2014\_52\_RESOLUTION\_PROSPECT\_WELLS\_CO\PLATS\RESOLUTION 12-65-25-24\RESOLUTION FED 12-65-24-25.dwg, 1/6/2015 4:12:09 PM, lisa



*Benjamin J. Reenders*  
 BENJAMIN J. REENDERS  
 PROFESSIONAL LAND SURVEYOR  
 COLORADO REGISTRATION NUMBER 48305  
 12/30/14

A horizontal scale bar with three vertical tick marks labeled '0', '1000'', and '2000'' from left to right. The segment between 0 and 1000' is divided into four equal parts by three vertical lines. The segment between 1000' and 2000' is a single solid block.

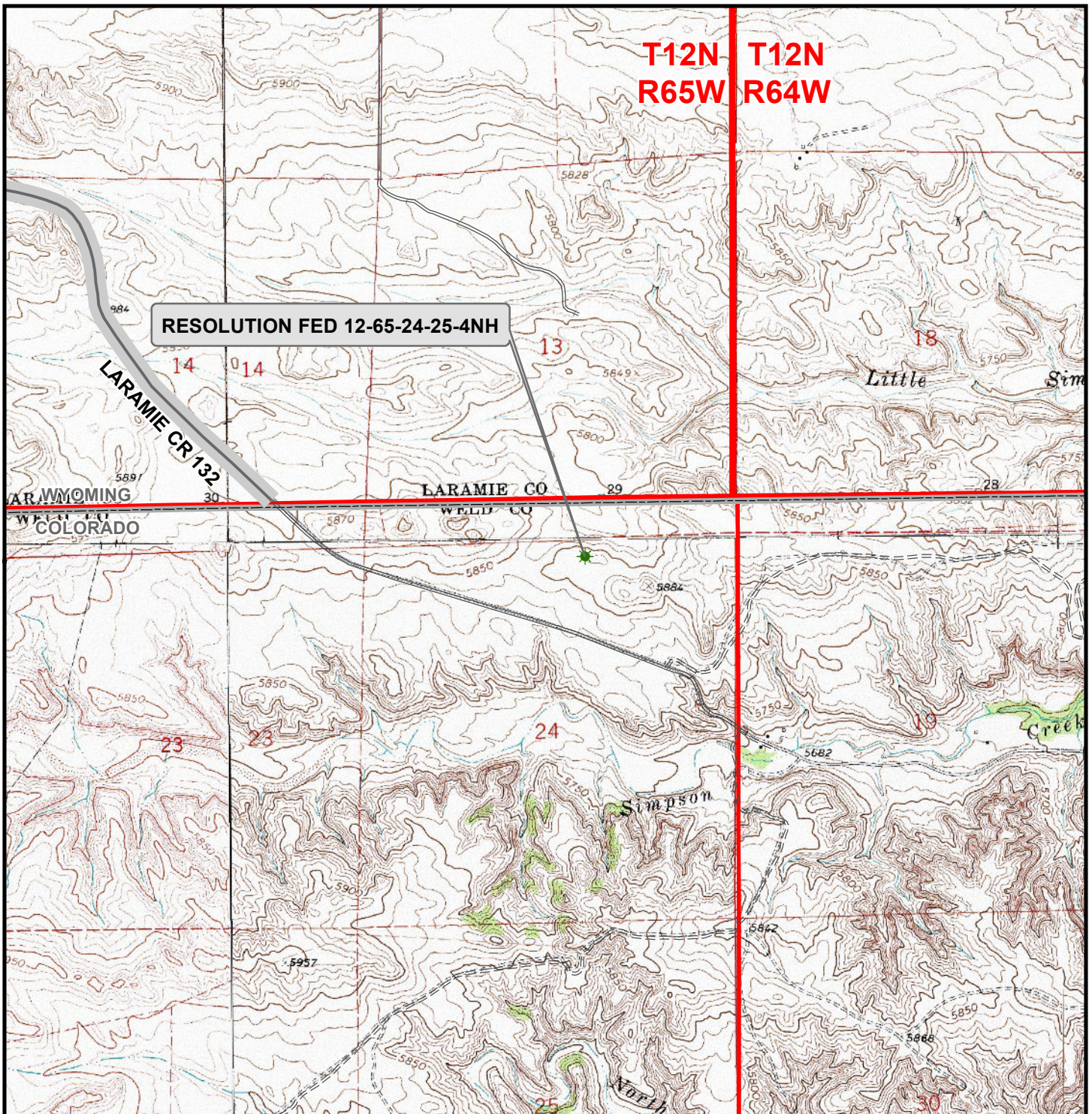
1.  INDICATES FOUND SECTION CORNER
2.  INDICATES CALCULATED CORNER
3. ELEVATION BASED ON NAVD88 (GEOID09)
4. BASIS OF BEARING DERIVED FROM COLORADO COORDINATE SYSTEM 1983 NORTH ZONE UNLESS OTHERWISE NOTED.
5. ALL MEASURED DISTANCES ARE GRID.  
COMBINED SCALE FACTOR: .99975950
6. OPERATOR: NICK ROADIFER / PDOP = 1.5
7. SEE ADDENDUM TO WELL LOCATION CERTIFICATE FOR EXISTING IMPROVEMENTS WITHIN 500' OF THE WELL PAD.
8. WELL FOOTAGES ARE MEASURED AT RIGHT ANGLES TO THE SECTION LINES.
9. THE BOTTOM OF HOLE BEARS S02°49'02"W 9676' FROM THE SURFACE LOCATION.

**RESOLUTION FED 12-65-24-25-4NH**  
**WELL LOCATION CERTIFICATE**  
**266' FNL & 2115' FEL NWNE (SURFACE)**  
**LOCATED IN SECTION 24**  
**600' FSL & 2633' FEL SWSE (BOTTOM)**  
**LOCATED IN SECTION 25**  
**T12N, R65W, 6TH P.M.**  
**WELD COUNTY, COLORADO**

**SHERIDAN OFFICE**  
2155 North Main Street  
Sheridan, Wyoming 82801  
Phone 307-674-0609

DRAFTED BY: MDZ	CHECKED BY: BJR	SHEET NO: <b>2</b> 2 OF 2
DATE DRAFTED: 12/30/14	DATE SURVEYED: 12/16/14	
REVISED:	FILE NAME: 14-52	





### Legend

- ★ Well - Fed - Proposed   
  Road - Primitive - Existing   
  Road - County - Existing  
 Road - Improved - Existing   
 Road - Highway - Existing

WELL PAD - RESOLUTION FED 12-65-24-25-5CH

**GENERAL LOCATION MAP**  
**RESOLUTION FED 12-65-24-25-4NH**  
**LOCATED IN SECTION 24**  
**T12N, R65W, 6th P.M.**  
**WELD COUNTY, COLORADO**

**Anadarko E&P**  
**Onshore LLC**

1099 18th Street  
 Denver, CO 80202



**CONSULTING, LLC**

SHERIDAN OFFICE  
 2155 North Main Street  
 Sheridan, Wyoming 82801  
 Phone 307-674-0609

LOVELAND OFFICE  
 1635 Foxtail Drive, Suite 204  
 Loveland, Colorado 80538  
 Phone 970-776-4331



SCALE: 1" = 2,000ft

NAD83 CO-Nft

DRAWN: TL

DATE: 30 Dec 2014

REVISED:

DATE: