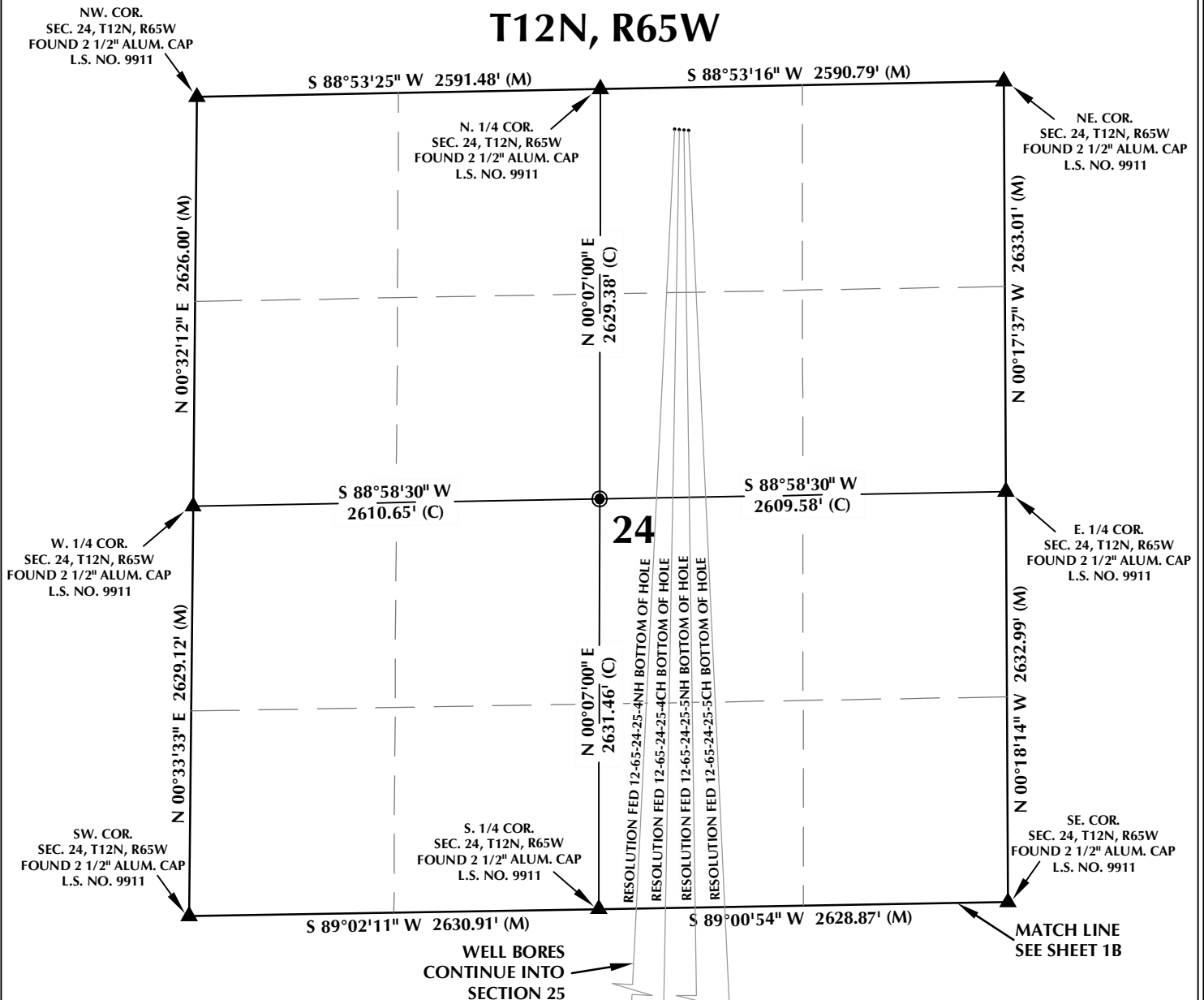


# RESOLUTION FED 12-65-24-25-5CH T12N, R65W

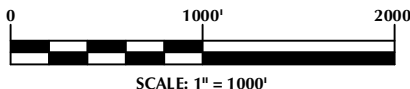


## WELL NOTES:

RESOLUTION FED 12-65-24-25-4NH  
SURFACE: 266' FNL, 2115' FEL  
BOTTOM HOLE: 600' FSL, 2633' FEL  
RESOLUTION FED 12-65-24-25-4CH  
SURFACE: 269' FNL, 2085' FEL  
BOTTOM HOLE: 600' FSL, 2300' FEL  
RESOLUTION FED 12-65-24-25-5NH  
SURFACE: 273' FNL, 2055' FEL  
BOTTOM HOLE: 600' FSL, 1960' FEL  
RESOLUTION FED 12-65-24-25-5CH  
SURFACE: 276' FNL, 2025' FEL  
BOTTOM HOLE: 600' FSL, 1620' FEL

## NOTES:

- ▲ INDICATES FOUND SECTION CORNER
- INDICATES CALCULATED CORNER
- BASIS OF BEARING DERIVED FROM COLORADO COORDINATE SYSTEM 1983 NORTH ZONE UNLESS OTHERWISE NOTED.
- ALL MEASURED DISTANCES ARE GRID.
- COMBINED SCALE FACTOR: .99975950
- WELL FOOTAGES ARE MEASURED AT RIGHT ANGLES TO THE SECTION LINES.



## WELL PAD - RESOLUTION FED 12-65-24-25-5CH

MULTI-WELL PLAN  
RESOLUTION FED 12-65-24-25-4NH,  
RESOLUTION FED 12-65-24-25-4CH,  
RESOLUTION 12-65-24-25-5NH &  
RESOLUTION 12-65-24-25-5CH  
LOCATED IN SECTIONS 24 & 25  
T12N, R65W, 6TH P.M.  
WELD COUNTY, COLORADO

**Anadarko E&P  
Onshore LLC**  
1099 18th Street  
Denver, Colorado 80202



## CONSULTING, LLC

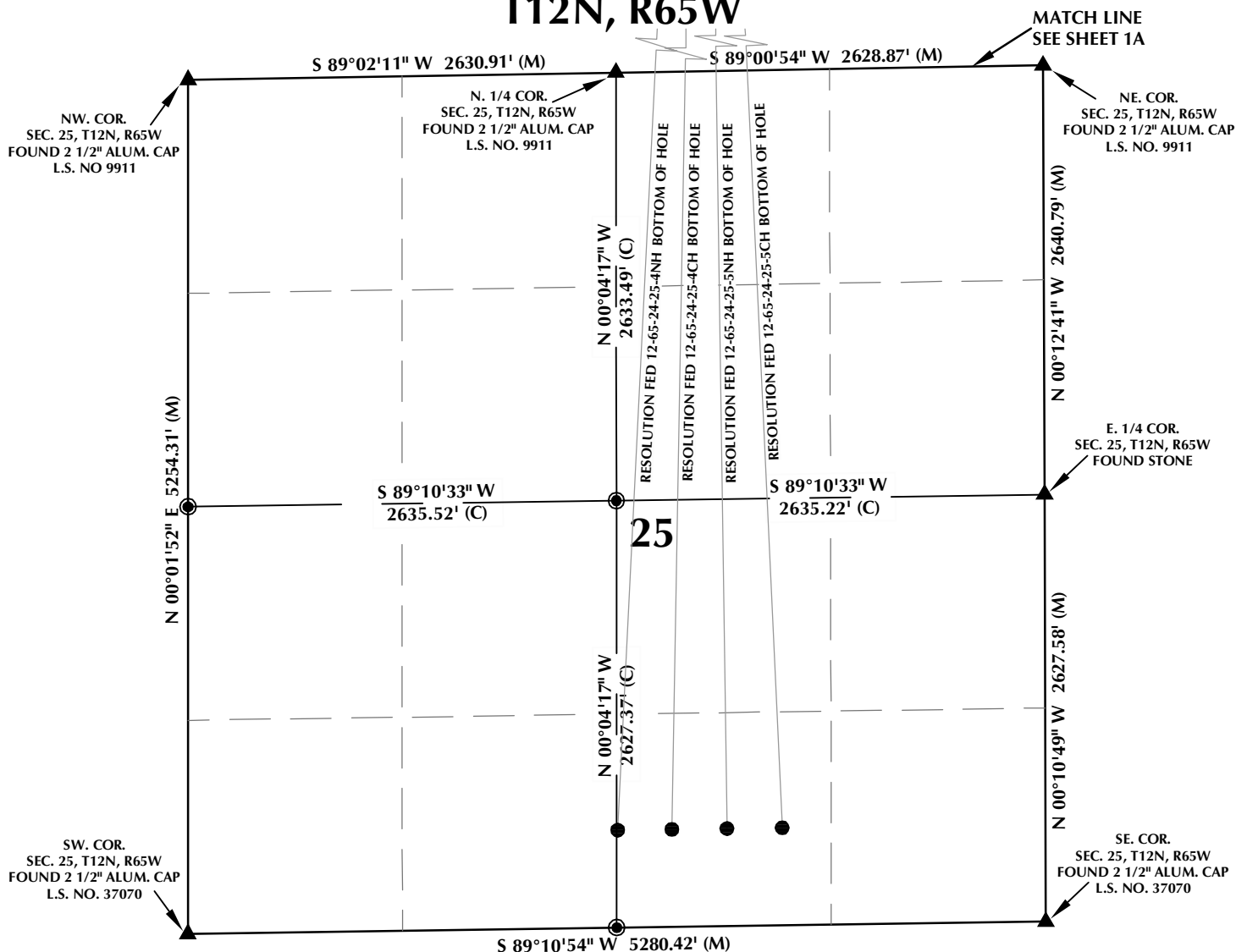
SHERIDAN OFFICE  
2155 North Main Street  
Sheridan, Wyoming 82801  
Phone 307-674-0609

LOVELAND OFFICE  
1635 Foxtrail Drive, Suite 204  
Loveland, Colorado 80538  
Phone 970-776-4331

DRAFTED BY:	LMO	CHECKED BY:	BJR	SHEET NO:
DATE DRAFTED:	12/30/14	DATE SURVEYED:	12/16/14	<b>1A</b>
REVISED:		FILE NAME:	14-52	1A OF 1

# RESOLUTION FED 12-65-24-25-5CH

## T12N, R65W



### WELL NOTES:

RESOLUTION FED 12-65-24-25-4NH  
SURFACE: 266' FNL, 2115' FEL  
BOTTOM HOLE: 600' FSL, 2633' FEL

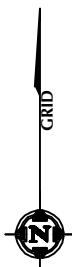
RESOLUTION FED 12-65-24-25-4CH  
SURFACE: 269' FNL, 2085' FEL  
BOTTOM HOLE: 600' FSL, 2300' FEL

RESOLUTION FED 12-65-24-25-5NH  
SURFACE: 273' FNL, 2055' FEL  
BOTTOM HOLE: 600' FSL, 1960' FEL

RESOLUTION FED 12-65-24-25-5CH  
SURFACE: 276' FNL, 2025' FEL  
BOTTOM HOLE: 600' FSL, 1620' FEL

### NOTES:

- ▲ INDICATES FOUND SECTION CORNER
- INDICATES CALCULATED CORNER
- BASIS OF BEARING DERIVED FROM COLORADO COORDINATE SYSTEM 1983 NORTH ZONE UNLESS OTHERWISE NOTED.
- ALL MEASURED DISTANCES ARE GRID.
- COMBINED SCALE FACTOR: .99975950
- WELL FOOTAGES ARE MEASURED AT RIGHT ANGLES TO THE SECTION LINES.



SCALE: 1" = 1000'

### WELL PAD - RESOLUTION FED 12-65-24-25-5CH

**MULTI-WELL PLAN**  
RESOLUTION FED 12-65-24-25-4NH,  
RESOLUTION FED 12-65-24-25-4CH,  
RESOLUTION 12-65-24-25-5NH &  
RESOLUTION 12-65-24-25-5CH  
LOCATED IN SECTIONS 24 & 25  
T12N, R65W, 6TH P.M.  
WELD COUNTY, COLORADO

**Anadarko E&P  
Onshore LLC**  
1099 18th Street  
Denver, Colorado 80202



### CONSULTING, LLC

**SHERIDAN OFFICE**  
2155 North Main Street  
Sheridan, Wyoming 82801  
Phone 307-674-0609

**LOVELAND OFFICE**  
1635 Foxtrail Drive, Suite 204  
Loveland, Colorado 80538  
Phone 970-776-4331

DRAFTED BY:	LMO	CHECKED BY:	BJR	SHEET NO:
DATE DRAFTED:	12/30/14	DATE SURVEYED:	12/16/14	<b>1B</b>
REVISED:		FILE NAME:	14-52	1B OF 1