

COLUMBINE LOGGING

Scale: 5" / 100'
Measured Depth Log

Well Name Rico LC29-72-1HNA

Location SESE SEC 29, T9N, R59W 6 PM

State COLORADO

County WELD

Country USA

Rig Number H&P 326

API Number 05-123-38619

AFE # 140725

Region DJ BASIN

Field WILDCAT

Spud Date 6/22/2014

Drilling Completed 6/28/2014

Surface Coordinates 440' FSL 955' FEL
40.71523 / -103.99584
SESE SEC 29, T9N, R59W 6 PM

Ground Elevation 4865'

K.B. Elevation 4895'

Logged Interval 630' **To** 5386'

Total Depth 10200'

Formation NIOBRARA, A MARL

Type of Drilling Fl... LSND

Operator

Company NOBLE ENERGY INC.

Address 1625 Broadway Suite 2200
Denver, CO 80202

Geologist

Name EMERSON PALMER

Company NOBLE ENERGY INC.

Address 1625 Broadway Suite 2200
Denver, CO 80202

Other

Rock Types

UNKNOWN	COAL	METAMORPHIC	SHALY SILTSTONE
ANHYDRITE	CONGLOMERATE	NO SAMPLE	SILTSTONE
BENTONITE	DOLOMITE	SALT	SILTY SHALE
BRECCIA	GRANITE	SALT- PEPPER SAND	TILL
CEMENT	GYPSUM	SANDSTONE	TUFF
CHALK	IGNEOUS	SHALE	WELDED TUFF
CHERT	LIMESTONE	SHALE COLORED	
CLAY CHOKE SAND	SIDERITE or LIMONITE	SHALE GRAY	
CLAYSTONE	MARLSTONE	SHALY SANDSTONE	

Accessories

Fossils

ALGAE
AMPHIPORA
BELEMNITE
BIOCLASTIC
BRACHIOIPOD
BRYOZOA
CEPHALOPOD
CORAL
CRINOID
ECHINOID
FISH
FORAMINIFERA

F FOSSIL

GASTROPOD
INOCERAMUS
OOLITE
OSTRACOD
PELECYPOD
PELLET
PISOLITE
PLANT REMAINS
PLANT SPORES
SCAPHOPOD
STROMATOPOROID

Minerals

// ANHYDRITIC

- ARGILLACEOUS

/ ARGILLITE GRAIN

BENTONITE
BITUMENOUS SUBSTANCE
BRECCIA FRAGMENTS
CALCAREOUS
CARBONACEOUS FLAKES
CHTDK
CHTLT
COAL - THIN BEDS
DOLOMITIC
FELDSPAR

● FERRUGINOUS PELLET

X FERRUGINOUS

X GLAUCONITE

X GYPSIFEROUS

HEAVY MINERAL
KAOLIN
MARLSTONE
MINERAL CRYSTALS
NODULES
PHOSPHATE PELLETS
PYRITE
SALT CAST
SANDY
SILICEOUS

X SILTY

X TUFFACEOUS

Stringer

ANHYDRITE STRINGER
BENTONITE STRINGER
COAL STRINGER
DOLOMITE STRINGER
GYPSUM STRINGER
LIMESTONE STRINGER
MARLSTONE (CALC) STRG
MARLSTONE (DOL) STRG
SANDSTONE STRINGER
SHALE STRINGER
SILTSTONE STRINGER

Other Symbols

Oil Show

DEAD
EVEN
QUESTIONABLE
SPOTTED STAINING

Porosity

E EARTHY
F FENESTRAL
F FRACTURE
X INTERCRYSTALLINE
O INTEROOLITIC

MOLDIC

ORGANIC
P PINPOINT
V VUGGY

Engineering

BIT
CONNECTION (LEFT)
CONNECTION (RIGHT)
CONNECTION GAS
CORE - LOST
CORE - RECOVERED
DST INTERVAL

FAULT

FORMATION TOP
GAS SHOW
MN DEPTH

NORMAL FAULT

OIL SHOW
OVERTURNED STRATA
REVERSE FAULT
SIDEWALL CORE (LEFT)
SIDEWALL CORE (RIGHT)

SLIDE

SURVEY
TRIP GAS

WIRELINE TESTED - LEFT

WIRELINE TESTED - RT

Rounding

A ANGULAR
R ROUNDED
S SUBANG
SUBRND

Textures

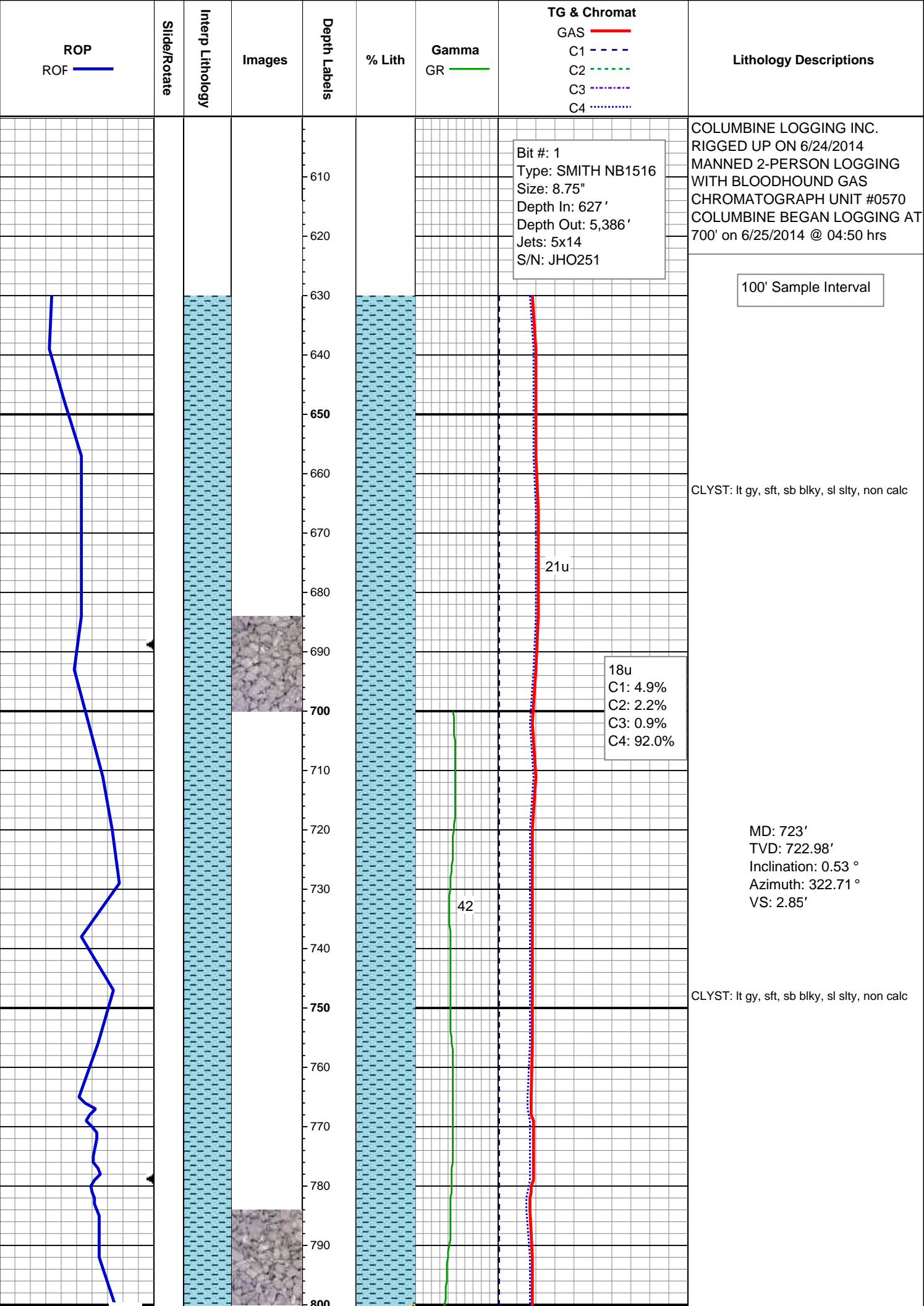
BS BOUNDSTONE
C CHALKY
CX CRYPTOXLN

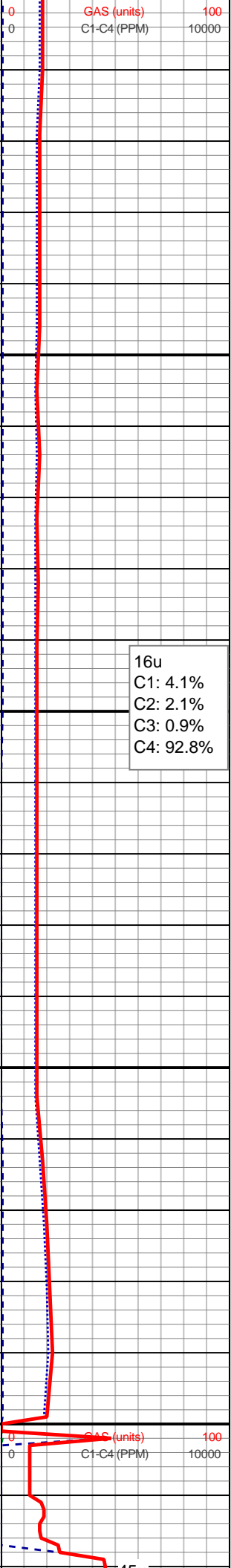
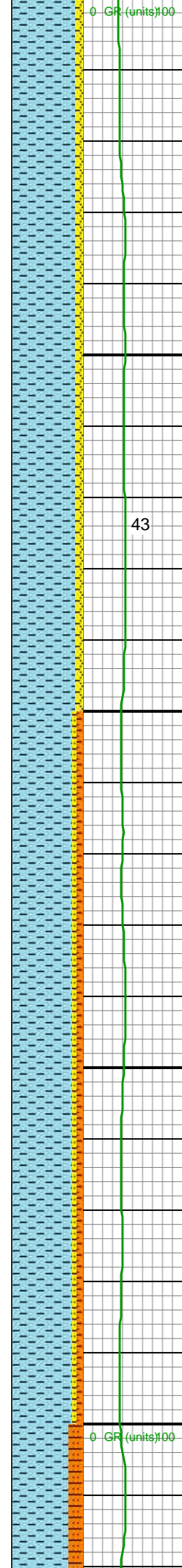
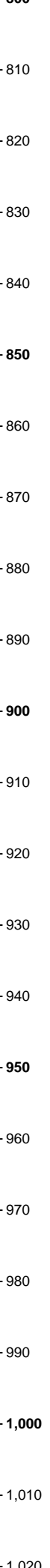
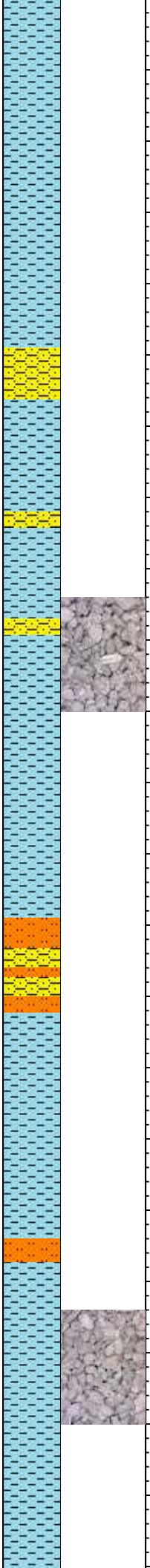
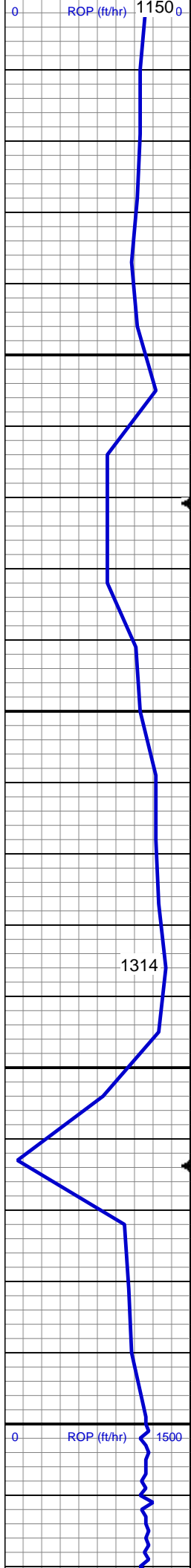
E EARTHY

FX FINELYXLN
GS GRAINSTONE
L LITHOGRAPHIC
MX MICROXLN
MS MUDSTONE
PS PACKSTONE
WS WACKESTONE

Sorting

M MODERATE
P POOR
W WELL





MD: 814'
TVD: 813.98'
Inclination: 0.44 °
Azimuth: 353.64 °
VS: 3.49'

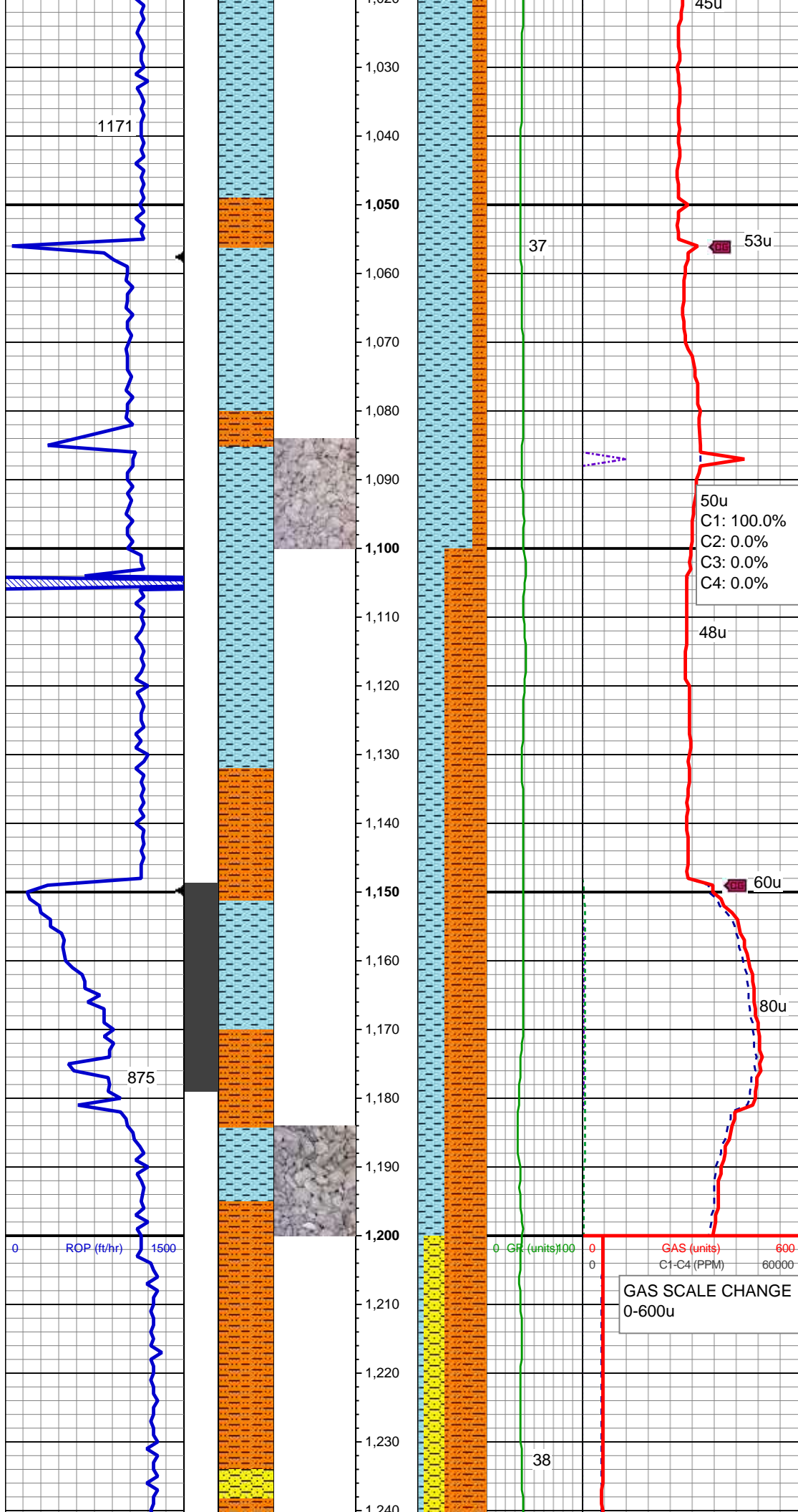
CLYST: lt gy, sft, sb blkly, sl slty, non calc
SHY SS: lt gy-gy, pty s&p, mod frm - sft,
vf gr-f gr, sb ang - sb rnd, mod w srt, arg
cmt, sl calc

16u
C1: 4.1%
C2: 2.1%
C3: 0.9%
C4: 92.8%

MD: 907'
TVD: 906.98'
Inclination: 0.62 °
Azimuth: 340.81 °
VS: 4.29'

CLYST: lt gy, sft, sb blkly, sl slty, non calc
SHY SLTST: lt gy-gy, frm, sb blkly-blky,
gritty, sdy, sl calc cmt SHY SS: lt gy-gy,
pty s&p, mod frm - sft, vf gr-f gr, sb ang -
sb rnd, mod w srt, arg cmt, sl calc

MD: 1,000'
TVD: 999.97'
Inclination: 0.44 °
Azimuth: 1.55 °
VS: 5.09'

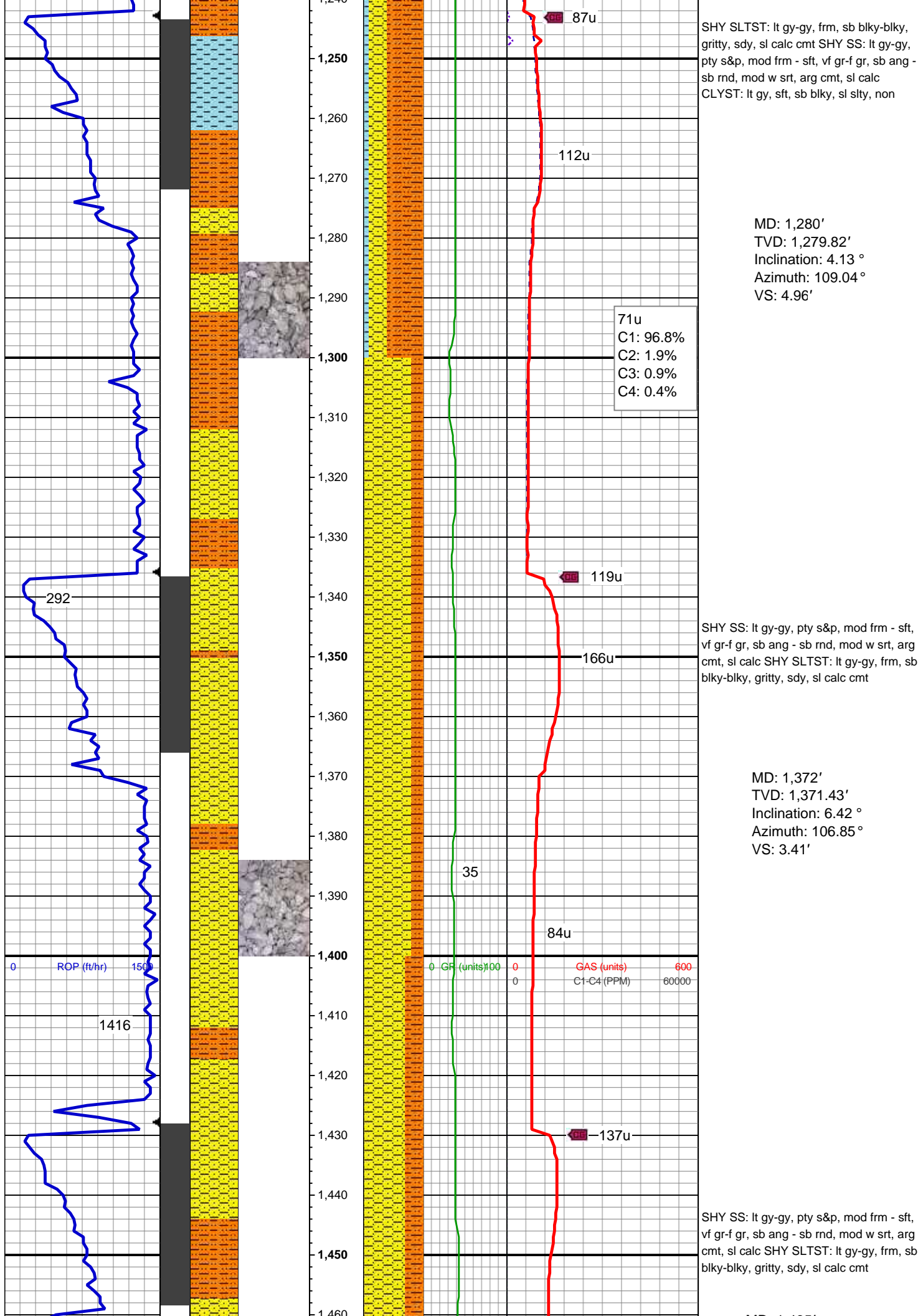


CLYST: lt gy, sft, sb blk, sl slty, non calc
SHY SLTST: lt gy-gy, frm, sb blk-blky, gritty, sdy, sl calc cmt

MD: 1,093'
TVD: 1,092.97'
Inclination: 0.35 °
Azimuth: 348.72 °
VS: 5.72'

SHY SLTST: lt gy-gy, frm, sb blk-blky, gritty, sdy, sl calc cmt
CLYST: lt gy, sft, sb blk, sl slty, non calc

MD: 1,186'
TVD: 1,185.96'
Inclination: 1.76 °
Azimuth: 103.77 °
VS: 5.82'



SHY SLTST: lt gy-gy, frm, sb blkly-blky, gritty, sdy, sl calc cmt
SHY SS: lt gy-gy, pty s&p, mod frm - sft, vf gr-f gr, sb ang - sb rnd, mod w srt, arg cmt, sl calc
CLYST: lt gy, sft, sb blkly, sl slty, non

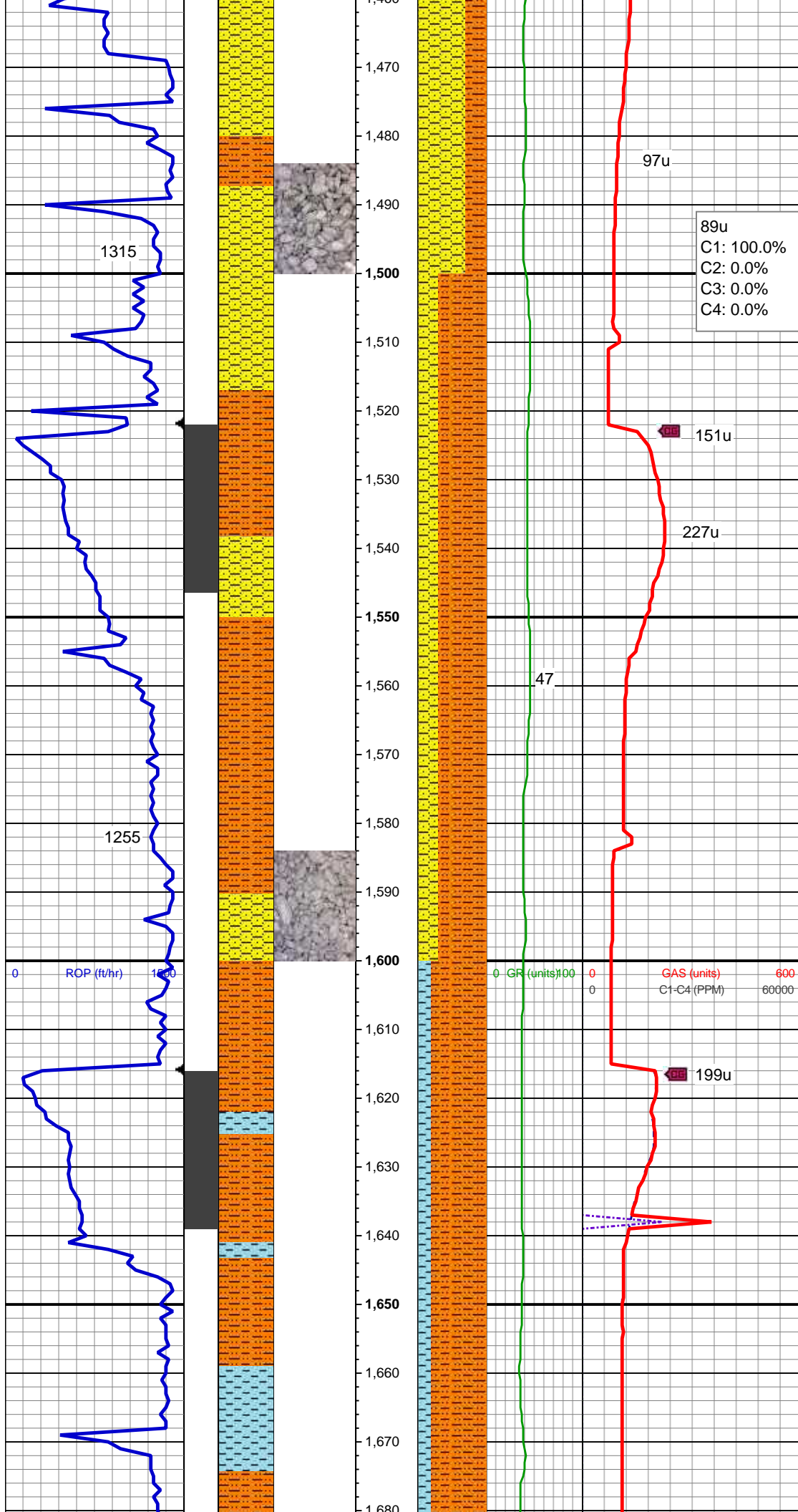
MD: 1,280'
TVD: 1,279.82'
Inclination: 4.13 °
Azimuth: 109.04 °
VS: 4.96'

71u
C1: 96.8%
C2: 1.9%
C3: 0.9%
C4: 0.4%

SHY SS: lt gy-gy, pty s&p, mod frm - sft, vf gr-f gr, sb ang - sb rnd, mod w srt, arg cmt, sl calc
SHY SLTST: lt gy-gy, frm, sb blkly-blky, gritty, sdy, sl calc cmt

MD: 1,372'
TVD: 1,371.43'
Inclination: 6.42 °
Azimuth: 106.85 °
VS: 3.41'

SHY SS: lt gy-gy, pty s&p, mod frm - sft, vf gr-f gr, sb ang - sb rnd, mod w srt, arg cmt, sl calc
SHY SLTST: lt gy-gy, frm, sb blkly-blky, gritty, sdy, sl calc cmt



MD: 1,465'
TVD: 1,463.58'
Inclination: 8.97 °
Azimuth: 109.48 °
VS: 0.99'

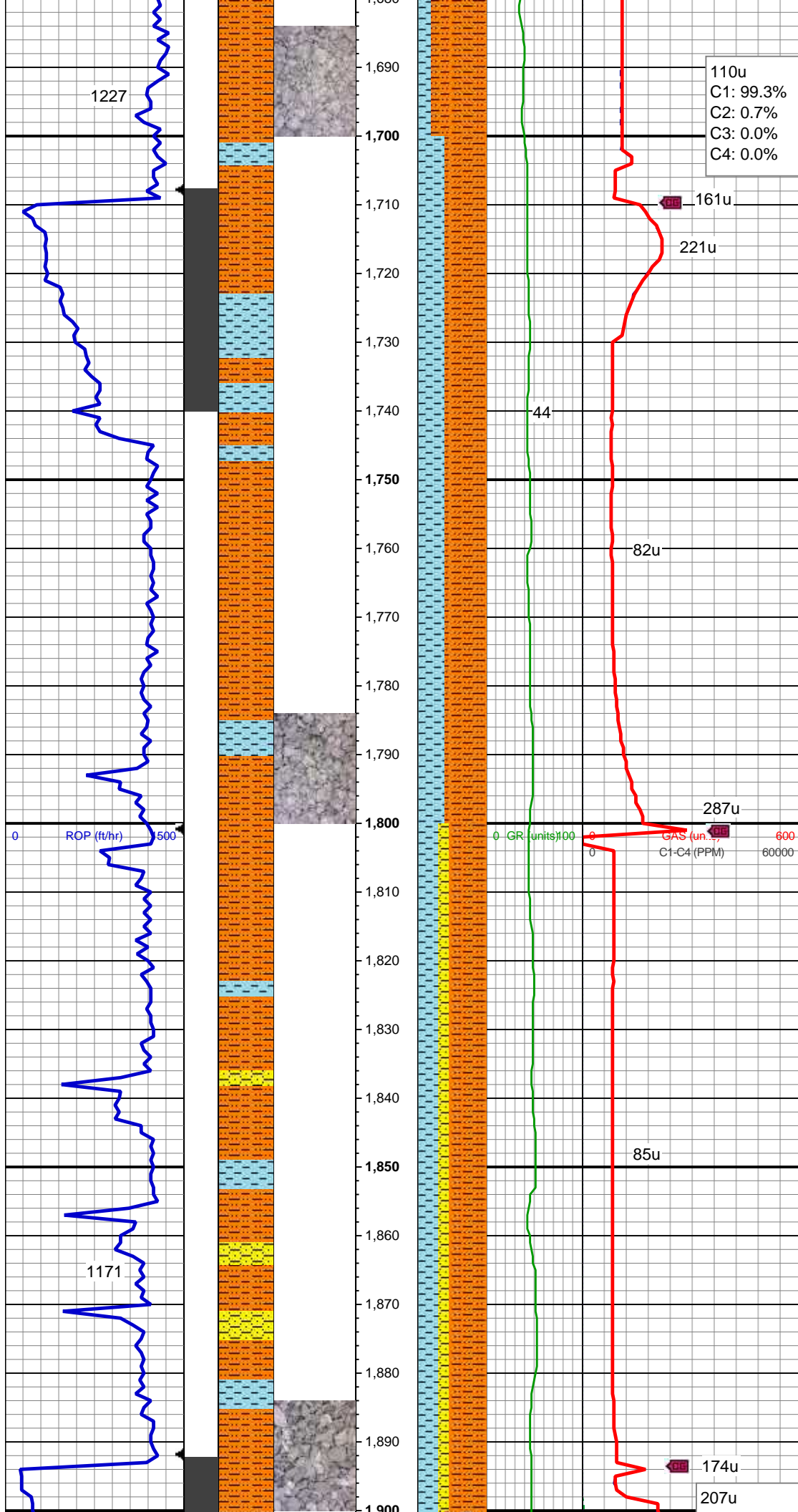
SHY SLTST: lt gy-gy, frm, sb blkly-blky, gritty, sdy, sl calc cmt SHY SS: lt gy-gy, pty s&p, mod frm - sft, vf gr-f gr, sb ang - sb rnd, mod w srt, arg cmt, sl calc

MD: 1,558'
TVD: 1,555.12'
Inclination: 11.34 °
Azimuth: 112.73 °
VS: -3.01'

MD: 1,650'
TVD: 1,645.03'
Inclination: 13.1 °
Azimuth: 110.98 °
VS: -7.92'

SHY SLTST: lt gy-gy, frm, sb blkly-blky, gritty, sdy, sl calc cmt CLYST: lt gy, sft, sb blkly, sl slty, non calc

Mud Wt: 8.85 / 29 Vis

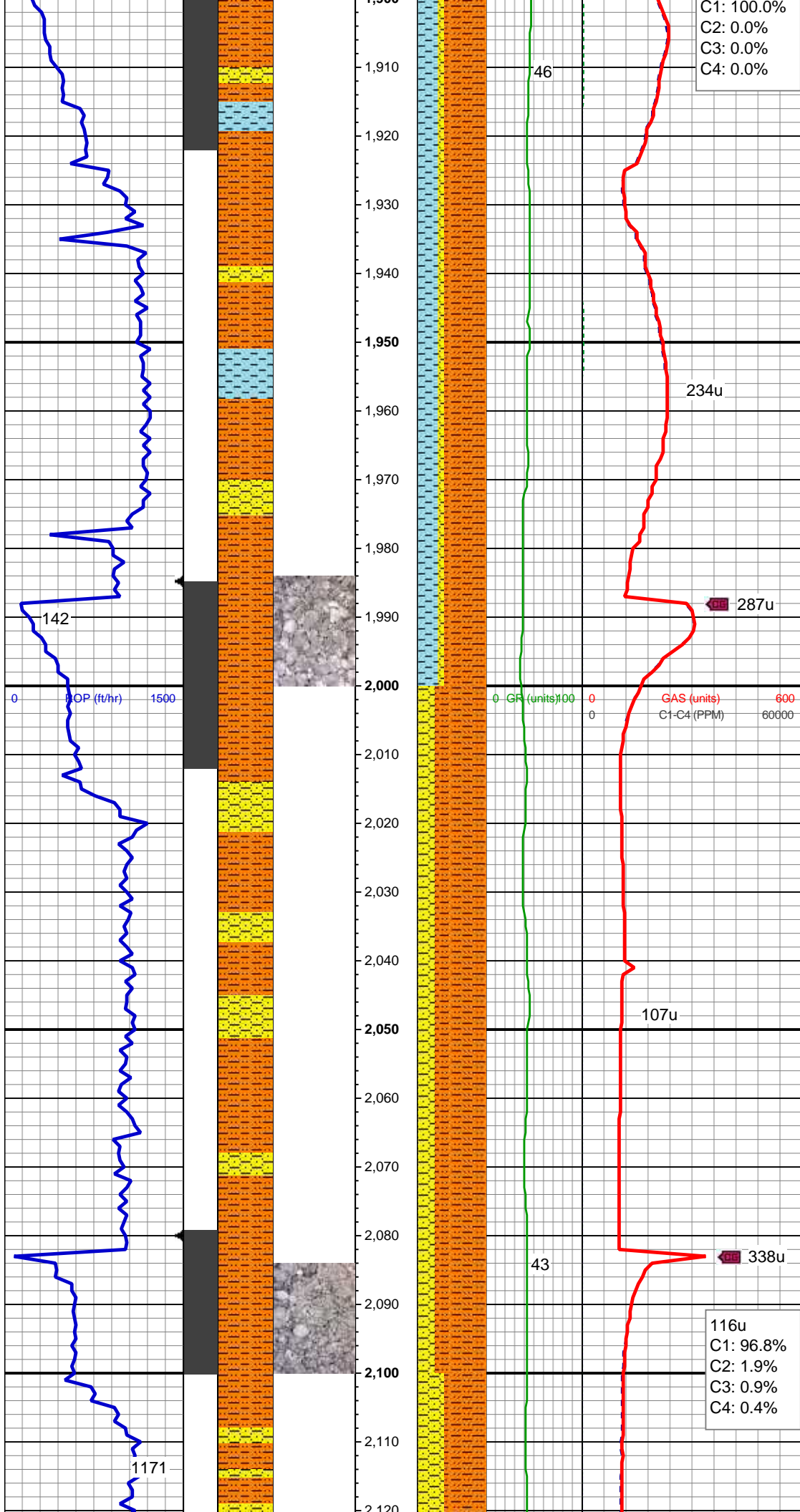


MD: 1,744'
TVD: 1,736.32'
Inclination: 14.51 °
Azimuth: 107.29 °
VS: -12.53'

SHY SLTST: lt gy-gy, frm, sb blkly-blky, gritty, sdy, sl calc cmt CLYST: lt gy, sft, sb blkly, sl slty, non calc

MD: 1,836'
TVD: 1,825.62'
Inclination: 13.28 °
Azimuth: 105.18 °
VS: -16.03'

SHY SLTST: lt gy-gy, frm, sb blkly-blky, gritty, sdy, sl calc cmt SHY SS: lt gy-gy, pty s&p, mod frm - sft, vf gr-f gr, sb ang - sb rnd, mod w srt, arg cmt, sl calc CLYST: lt gy, sft, sb blkly, sl slty, non



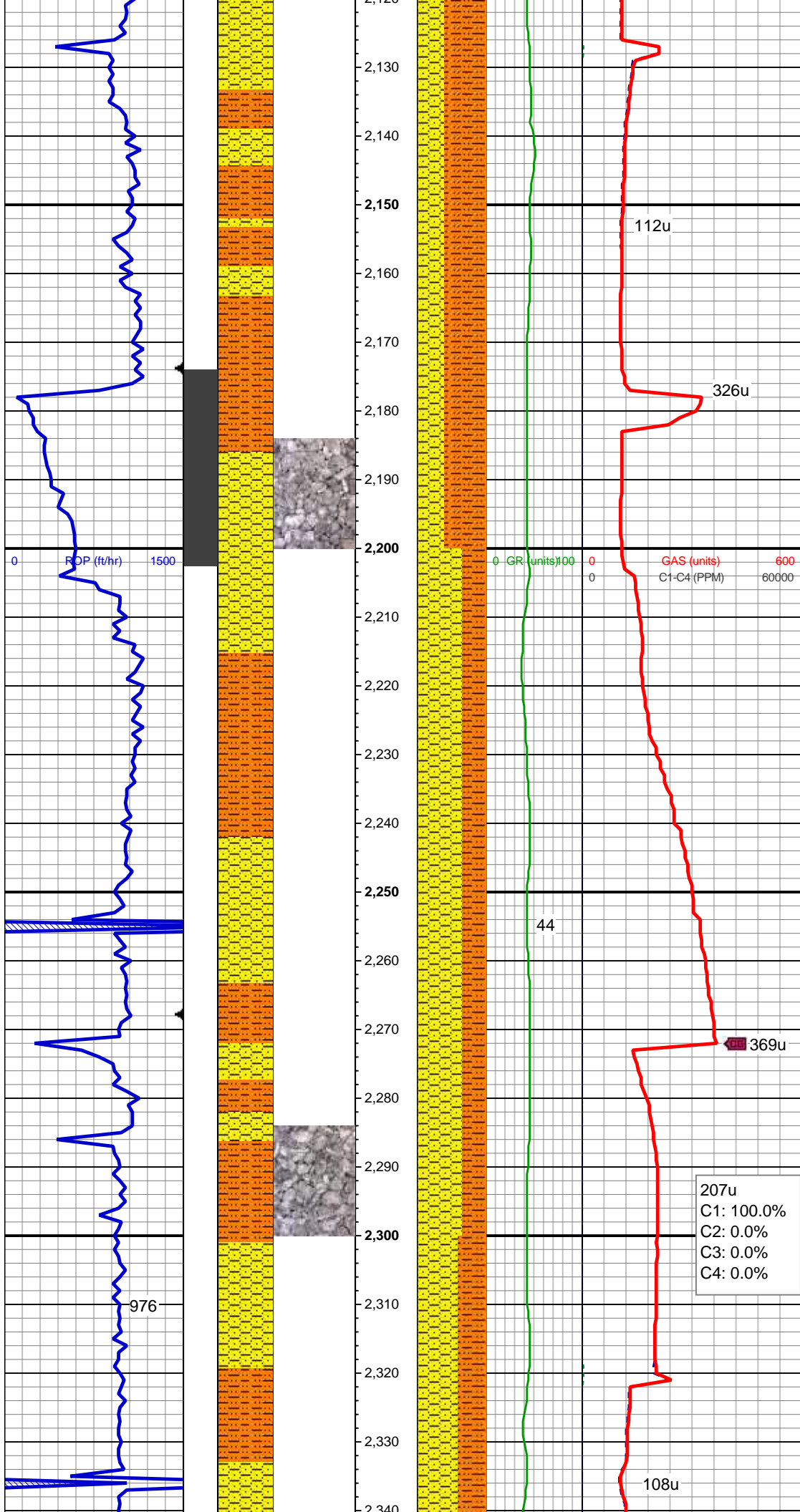
Azimuth: 111.77°
VS: -28.65'

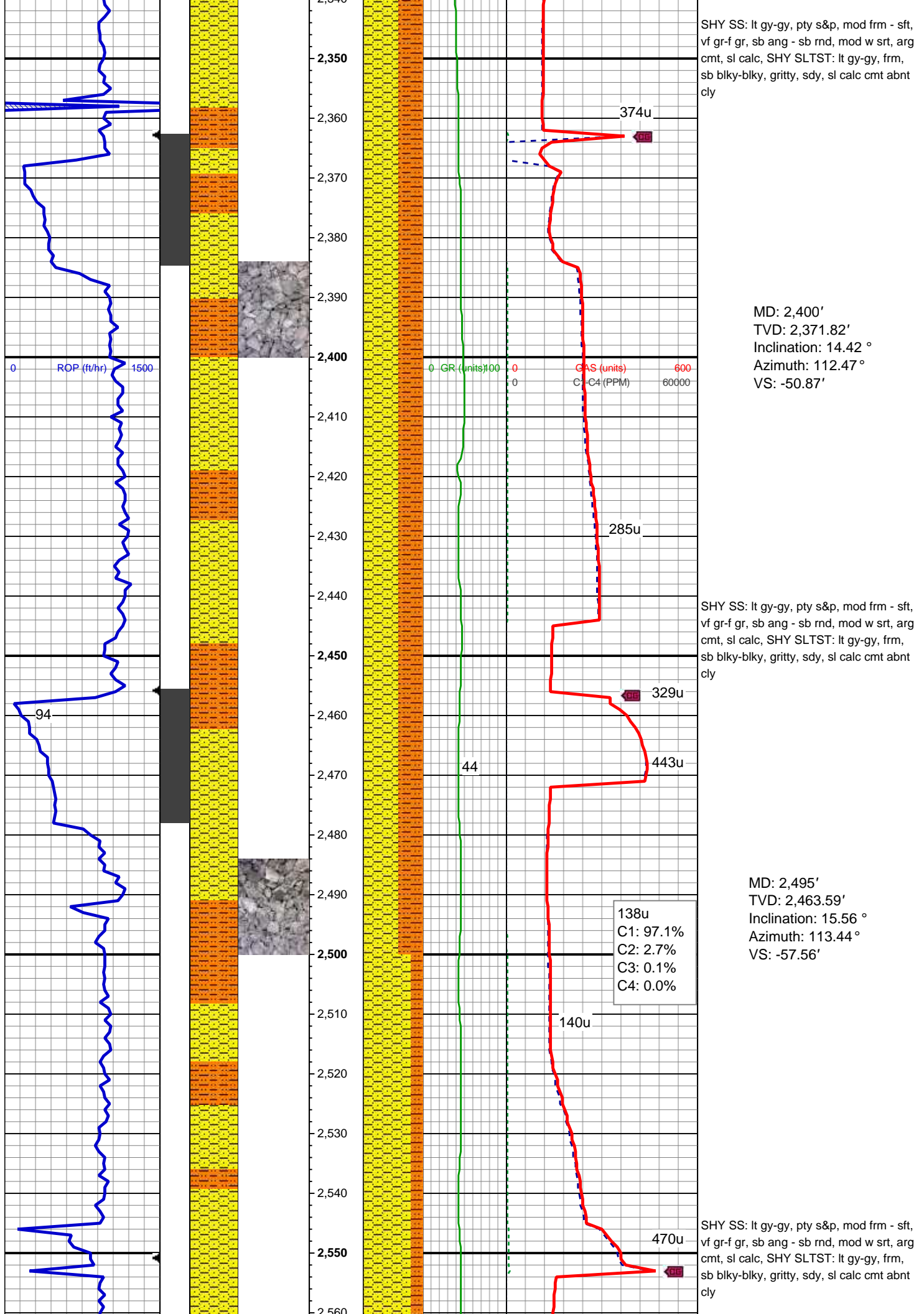
SHY SLTST: lt gy-gy, frm, sb blk-y-blky, gritty, sdy, sl calc cmt SHY SS: lt gy-gy, pty s&p, mod frm - sft, vf gr-f gr, sb ang - sb rnd, mod w srt, arg cmt, sl calc, abnt cly

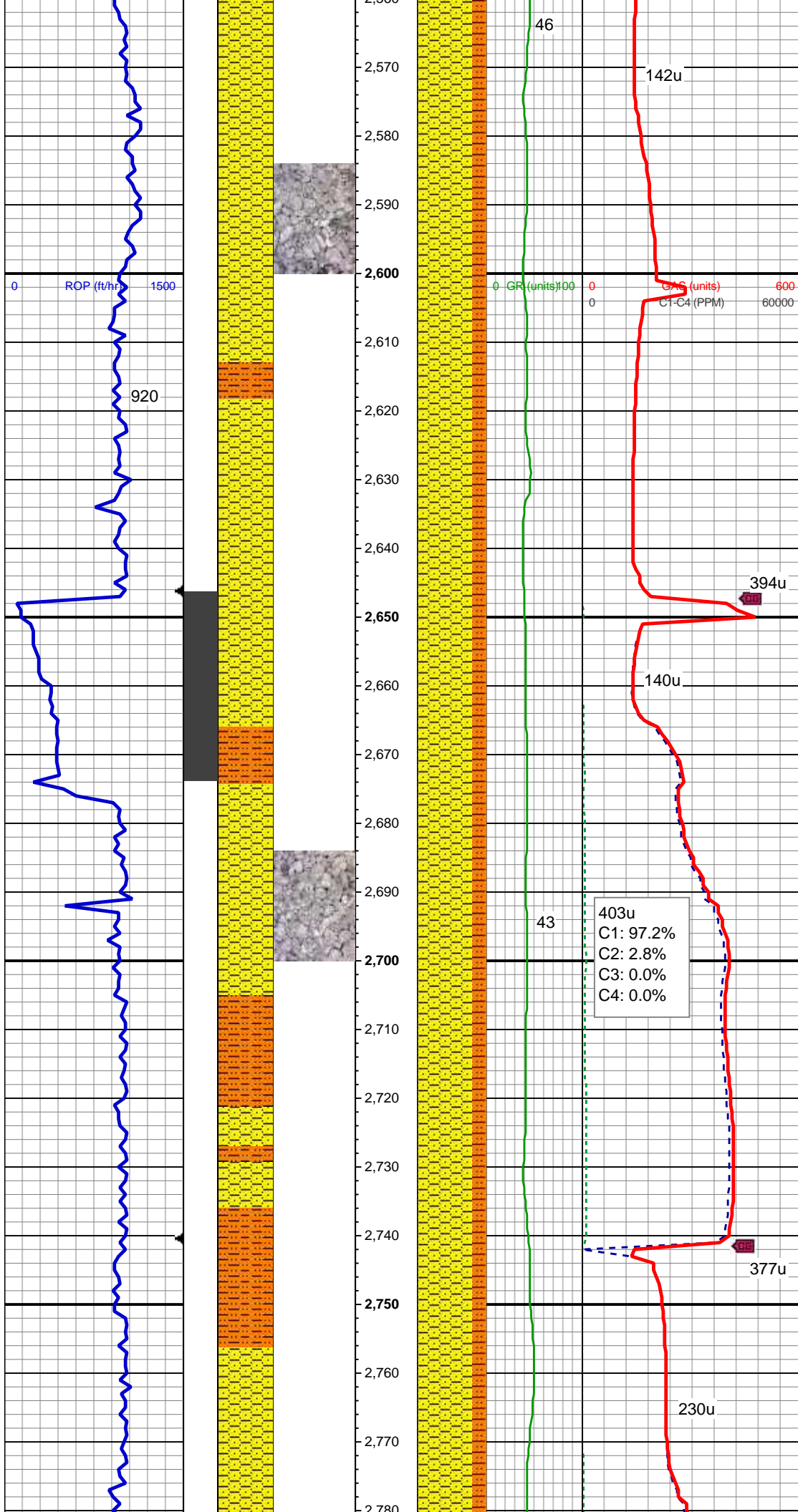
MD: 2,211'
TVD: 2,188.94'
Inclination: 15.04 °
Azimuth: 116.69 °
VS: -35.68'

SHY SS: lt gy-gy, pty s&p, mod frm - sft, vf gr-f gr, sb ang - sb rnd, mod w srt, arg cmt, sl calc, SHY SLTST: lt gy-gy, frm, sb blk-y-blky, gritty, sdy, sl calc cmt abnt cly

MD: 2,306'
TVD: 2,280.8'
Inclination: 14.51 °
Azimuth: 116.87 °
VS: -43.81'







MD: 2,589'
TVD: 2,554.41'
Inclination: 14.33 °
Azimuth: 114.32 °
VS: -64.52'

SHY SS: lt gy-gy, pty s&p, mod frm - sft, vf gr-f gr, sb ang - sb rnd, mod w srt, arg cmt, sl calc, SHY SLTST: lt gy-gy, frm, sb blk-y-blky, gritty, sdy, sl calc cmt abnt cly

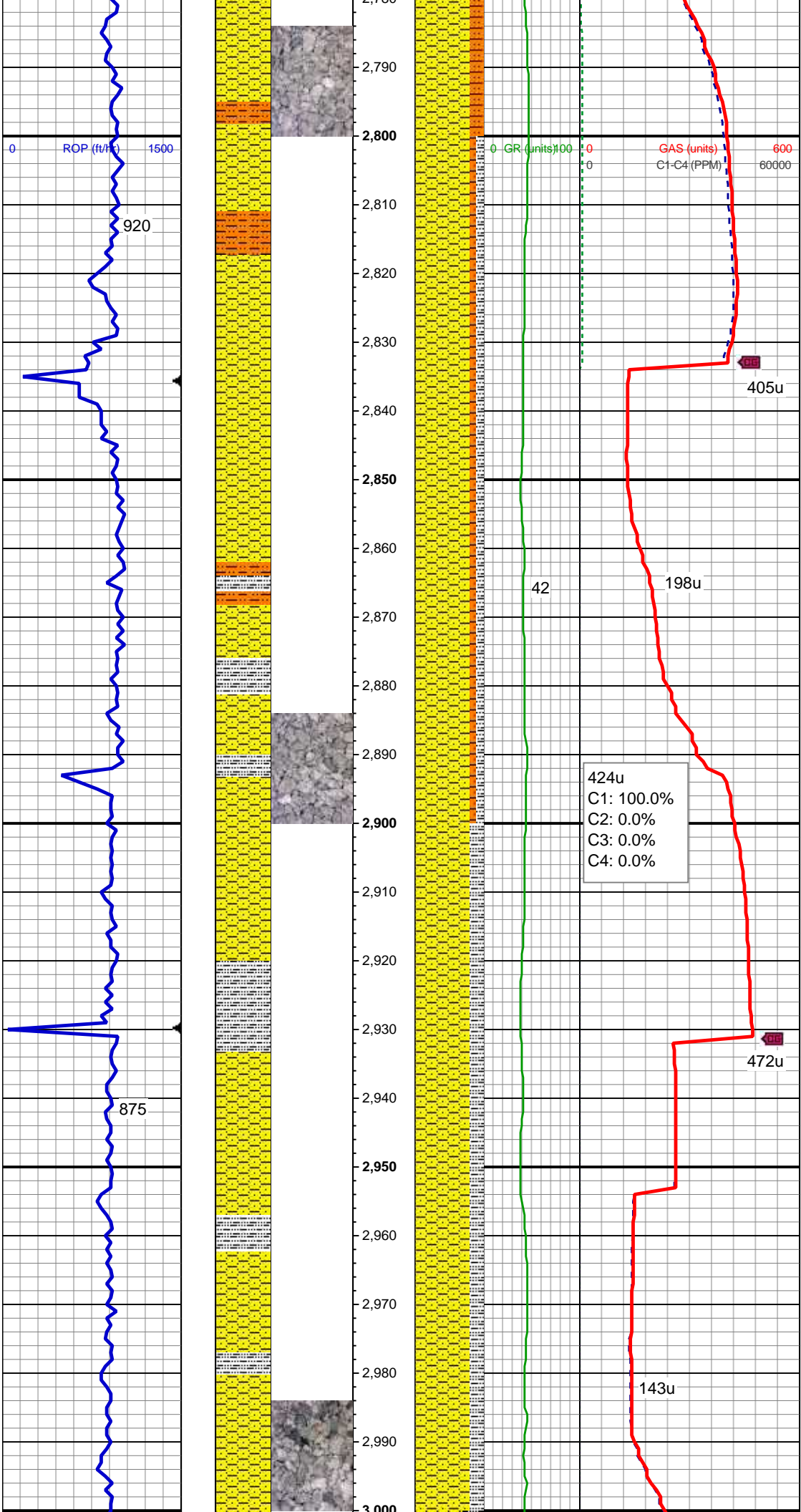
MD: 2,684'
TVD: 2,646.15'
Inclination: 15.74 °
Azimuth: 113.79 °
VS: -71.67'

Mud Wt: 9.00 / 28 Vis

SHY SS: lt gy-gy, pty s&p, mod frm - sft, vf gr-f gr, sb ang - sb rnd, mod w srt, arg cmt, sl calc, SHY SLTST: lt gy-gy, frm, sb blk-y-blky, gritty, sdy, sl calc cmt abnt cly

MD: 2,778'
TVD: 2,736.69'
Inclination: 15.48 °

Azimuth: 113.44°
VS: -78.83'



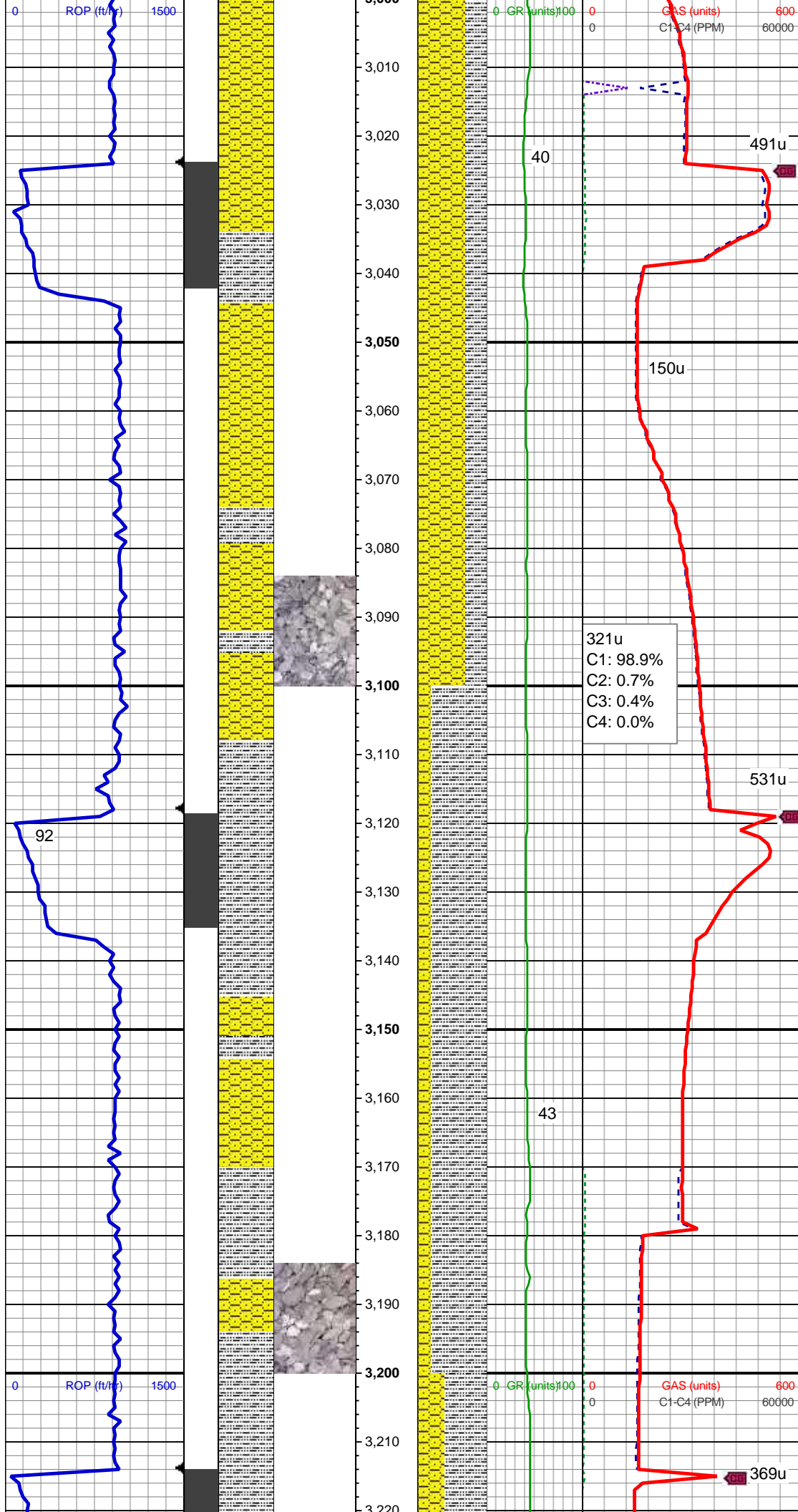
SHY SS: lt gy- med gy, sl brn, occ pty wh, pty s&p, mod frm - brit, vf gr-f gr, sb ang - sb rnd, mod srt, arg cmt, tr glau, occ mica, v sl calc, SLTY SH: lt-dk gy, occ sl tan, sft-frm, sb blk-ly-sb pty, gritty, tr sdy ip, v sl calc, SHY SLTST: lt gy-gy, frm, sb blk-ly-blky, gritty, sdy, sl calc cmt

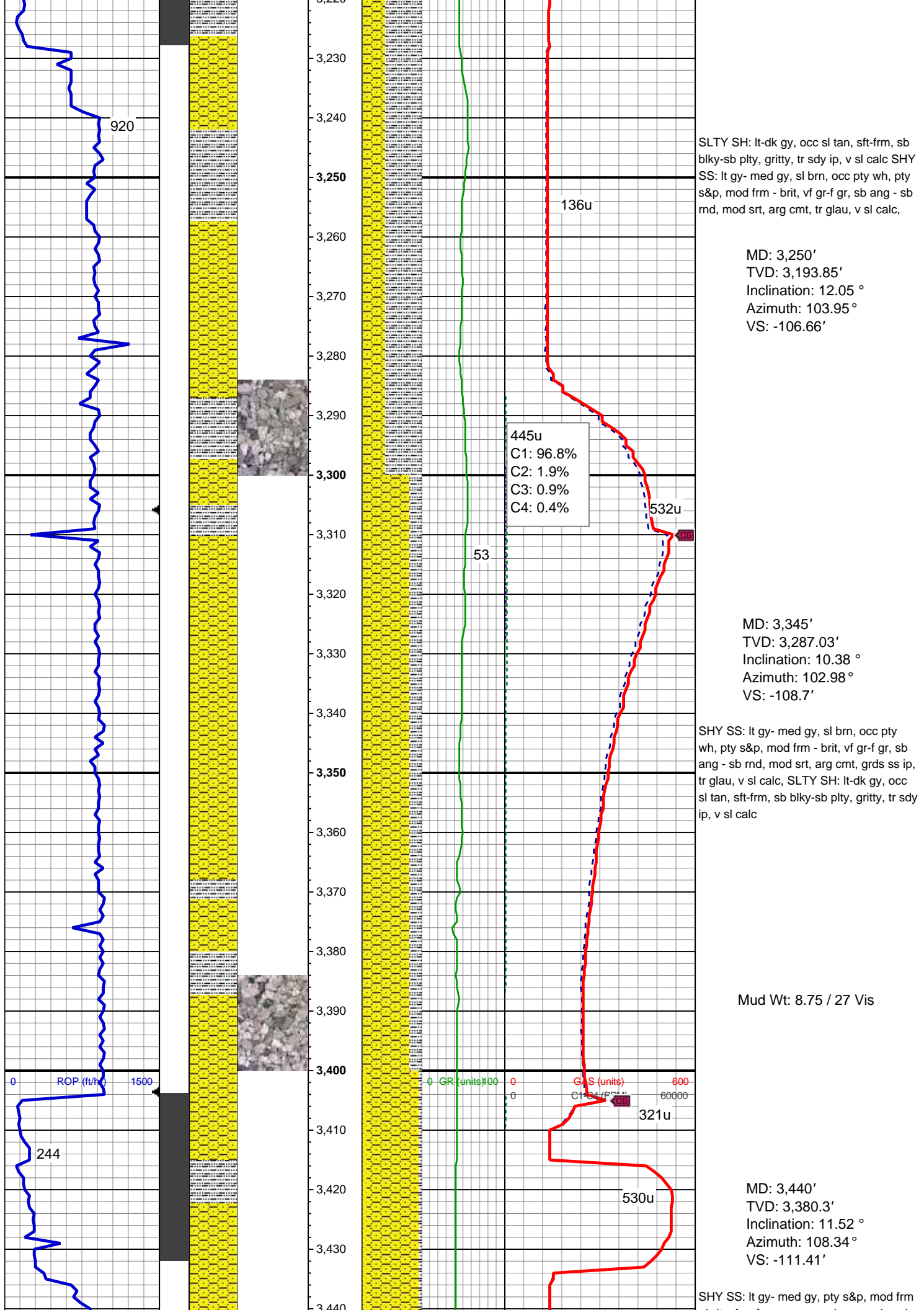
MD: 2,873'
TVD: 2,828.28'
Inclination: 15.3°
Azimuth: 113.17°
VS: -85.84'

SHY SS: lt gy- med gy, sl brn, occ pty wh, pty s&p, mod frm - brit, vf gr-f gr, sb ang - sb rnd, mod srt, arg cmt, tr glau, occ mica, v sl calc, SLTY SH: lt-dk gy, occ sl tan, sft-frm, sb blk-ly-sb pty, gritty, tr sdy ip, v sl calc, occ cly

MD: 2,967'
TVD: 2,919.08'
Inclination: 14.68°
Azimuth: 112.47°
VS: -92.4'

Mud Wt: 8.75 / 29 Vis





SLTY SH: lt-dk gy, occ sl tan, sft frm, sb
blky-sb plty, gritty, tr sdy ip, v sl calc SHY
SS: lt gy- med gy, sl brn, occ pty wh, pty
s&p, mod frm - brit, vf gr-f gr, sb ang - sb
rnd, mod srt, arg cmt, tr glau, v sl calc,

MD: 3,250'
TVD: 3,193.85'
Inclination: 12.05 °
Azimuth: 103.95 °
VS: -106.66'

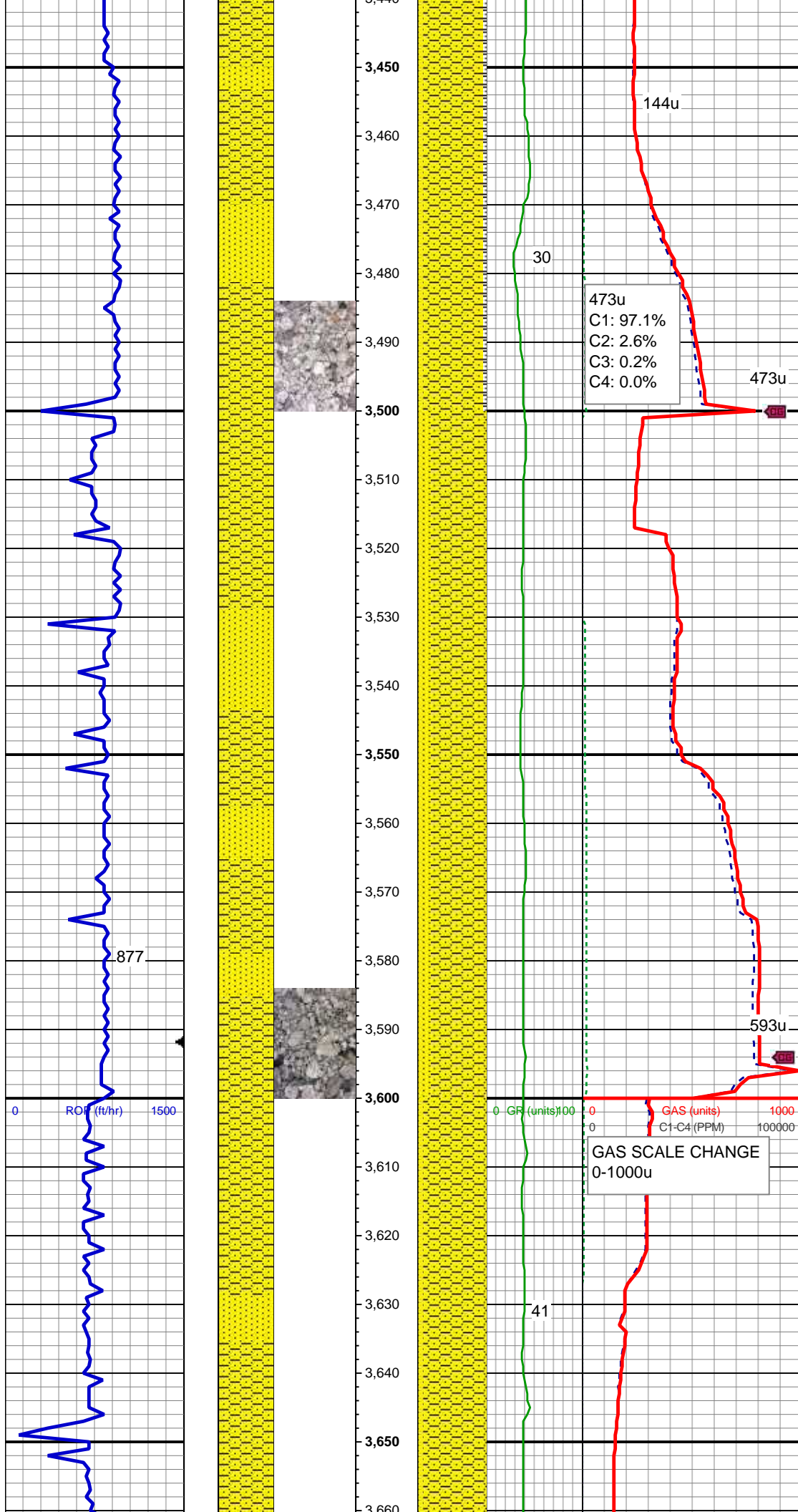
MD: 3,345'
TVD: 3,287.03'
Inclination: 10.38 °
Azimuth: 102.98 °
VS: -108.7'

SHY SS: lt gy- med gy, sl brn, occ pty
wh, pty s&p, mod frm - brit, vf gr-f gr, sb
ang - sb rnd, mod srt, arg cmt, grds ss ip,
tr glau, v sl calc, SLTY SH: lt-dk gy, occ
sl tan, sft frm, sb blky-sb plty, gritty, tr sdy
ip, v sl calc

Mud Wt: 8.75 / 27 Vis

MD: 3,440'
TVD: 3,380.3'
Inclination: 11.52 °
Azimuth: 108.34 °
VS: -111.41'

SHY SS: lt gy- med gy, pty s&p, mod frm



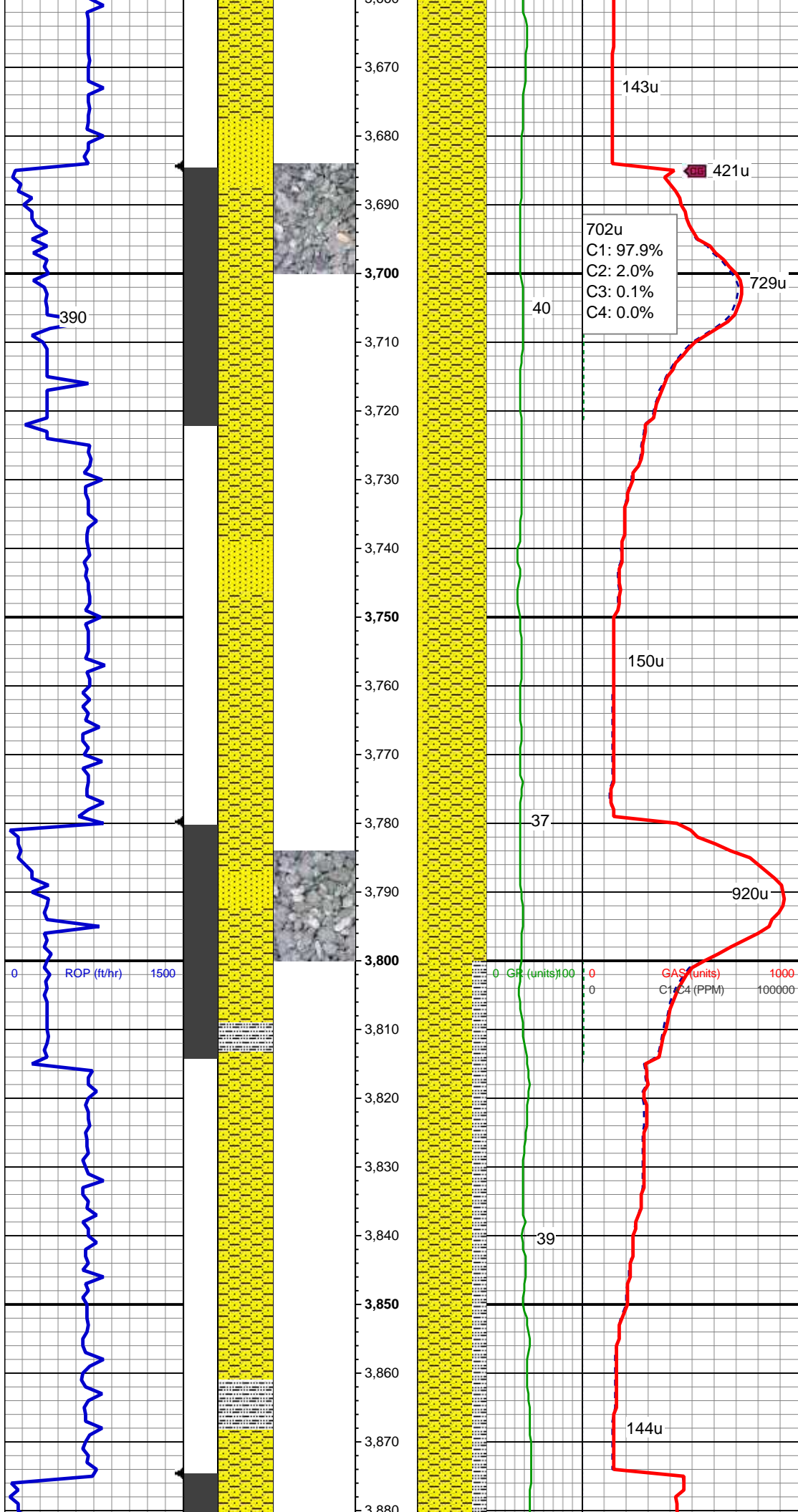
- brit, vf gr-f gr, occ c gr, sb ang - sb rnd, mod srt, tr glau, arg cmt, sl calc, occ mica, SS: lt gy - wh, s&p, vf-f grn, sb rd-sb ang, mod w srt, frm-friable, tr glau, occ sl arg, sl calc SLTY SH: lt-dk gy, occ sl tan, sft-frm, sb blk-y-sb plty, gritty, tr sdy ip, v sl calc

MD: 3,534'
TVD: 3,472.32'
Inclination: 12.05 °
Azimuth: 107.37 °
VS: -114.96'

SHY SS: lt gy- med gy, pty s&p, mod frm - brit, vf gr-f gr, occ c gr, sb ang - sb rnd, mod srt, tr glau, arg cmt, sl calc, occ mica, SS: lt gy - wh, s&p, vf-f grn, sb rd-sb ang, mod w srt, frm-friable, tr glau, occ sl arg, sl calc

MD: 3,629'
TVD: 3,565.06'
Inclination: 13.01 °
Azimuth: 107.11 °
VS: -118.56'

SHY SS: lt gy- med gy, pty s&p, mod frm - brit, vf gr-f gr, occ c gr, sb ang - sb rnd, mod srt, tr glau, arg cmt, sl calc, SS: lt gy - wh, s&p, vf-f grn, sb rd-sb ang, mod w srt, frm-friable, tr glau, occ sl arg, sl calc



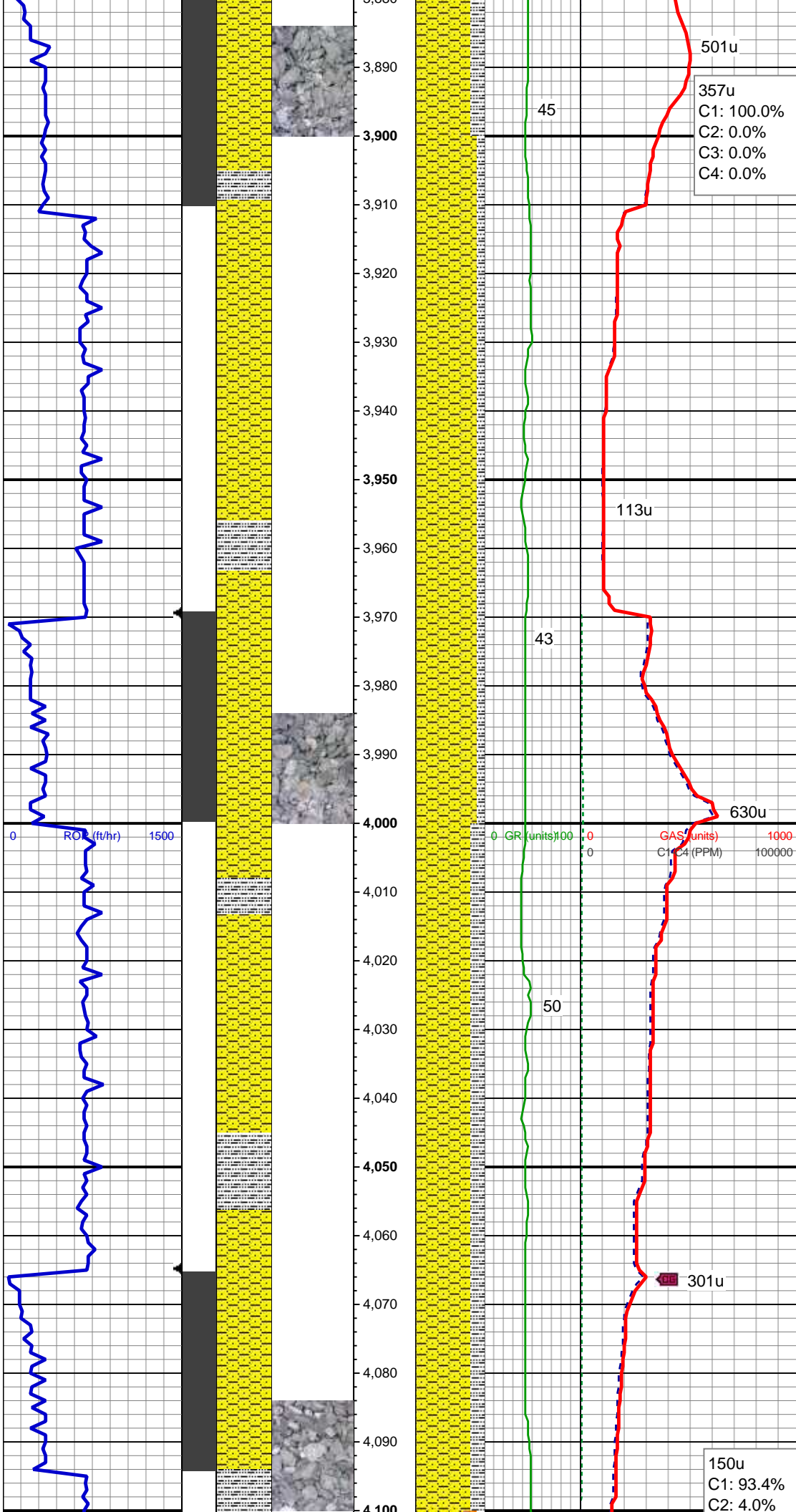
MD: 3,723'
TVD: 3,656.92'
Inclination: 11.43 °
Azimuth: 107.64 °
VS: -122.08'

SHY SS: lt gy- med gy, pty s&p, mod frm
- brit, vf gr-f gr, occ c gr, sb ang - sb rnd,
mod srt, tr glau, arg cmt, sl calc, SS: lt
gy - wh, s&p, vf-f grn, sb rd-sb ang, mod w
srt, frm-friable, tr glau, occ sl arg, sl calc

Mud Wt: 8.75 / 29 Vis

MD: 3,818'
TVD: 3,750.33'
Inclination: 9.58 °
Azimuth: 104.3 °
VS: -124.77'

SHY SS: lt gy- med gy, sl brn, occ pty
wh, pty s&p, mod frm - brit, vf gr-f gr, sb
ang - sb rnd, mod srt, arg cmt, grds ss ip,
tr glau, v sl calc, SLTY SH: lt-dk gy, occ
sl tan, sft-frm, sb blkgy-sb plty, gritty, tr sdy
ip, v sl calc



MD: 3,913'
TVD: 3,844.3'
Inclination: 7.21 °
Azimuth: 100.08 °
VS: -126.06'

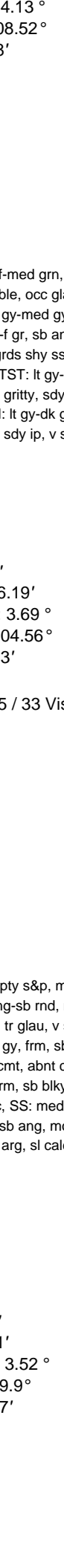
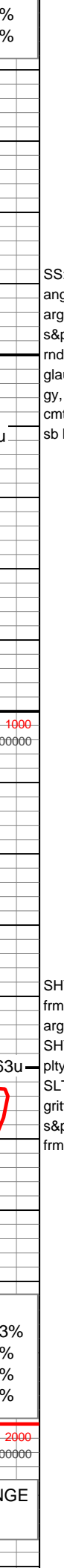
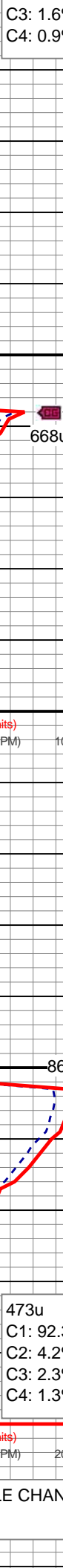
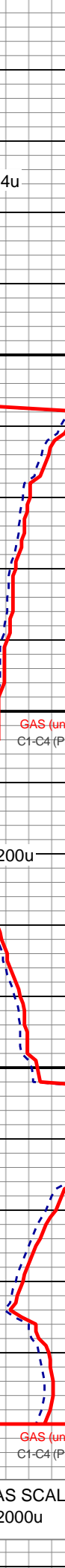
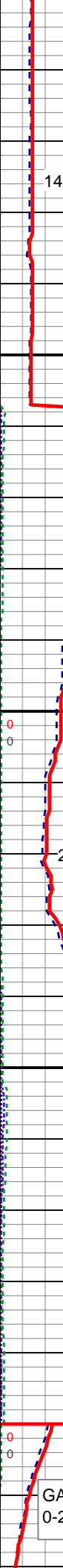
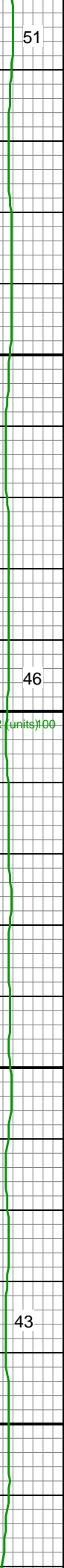
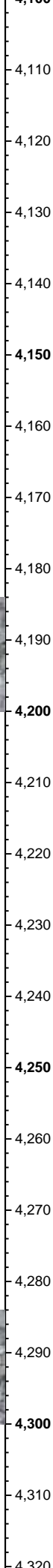
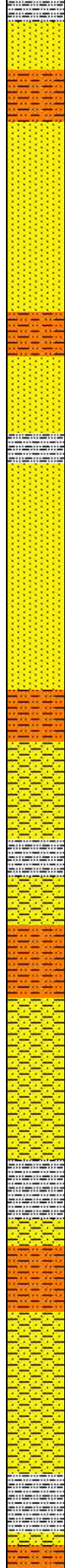
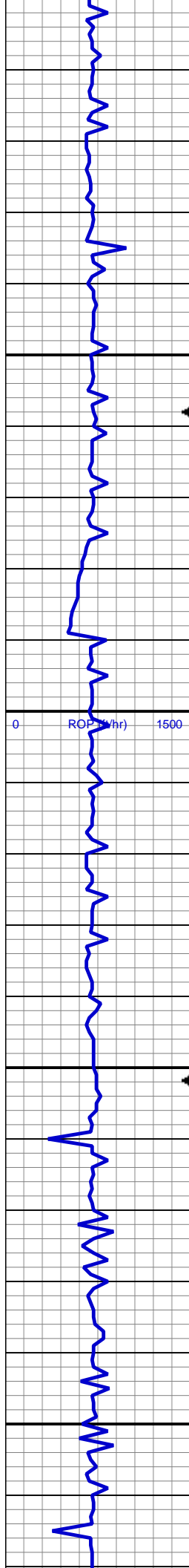
SHY SS: lt gy- med gy, sl brn, occ pty
wh, pty s&p, mod frm - brit, vf gr-f gr, sb
ang - sb rnd, mod srt, arg cmt, grds ss ip,
tr glau, v sl calc, SLTY SH: lt-dk gy, occ
sl tan, sft-frm, sb blkly-sb pty, gritty, tr sdy
ip, v sl calc

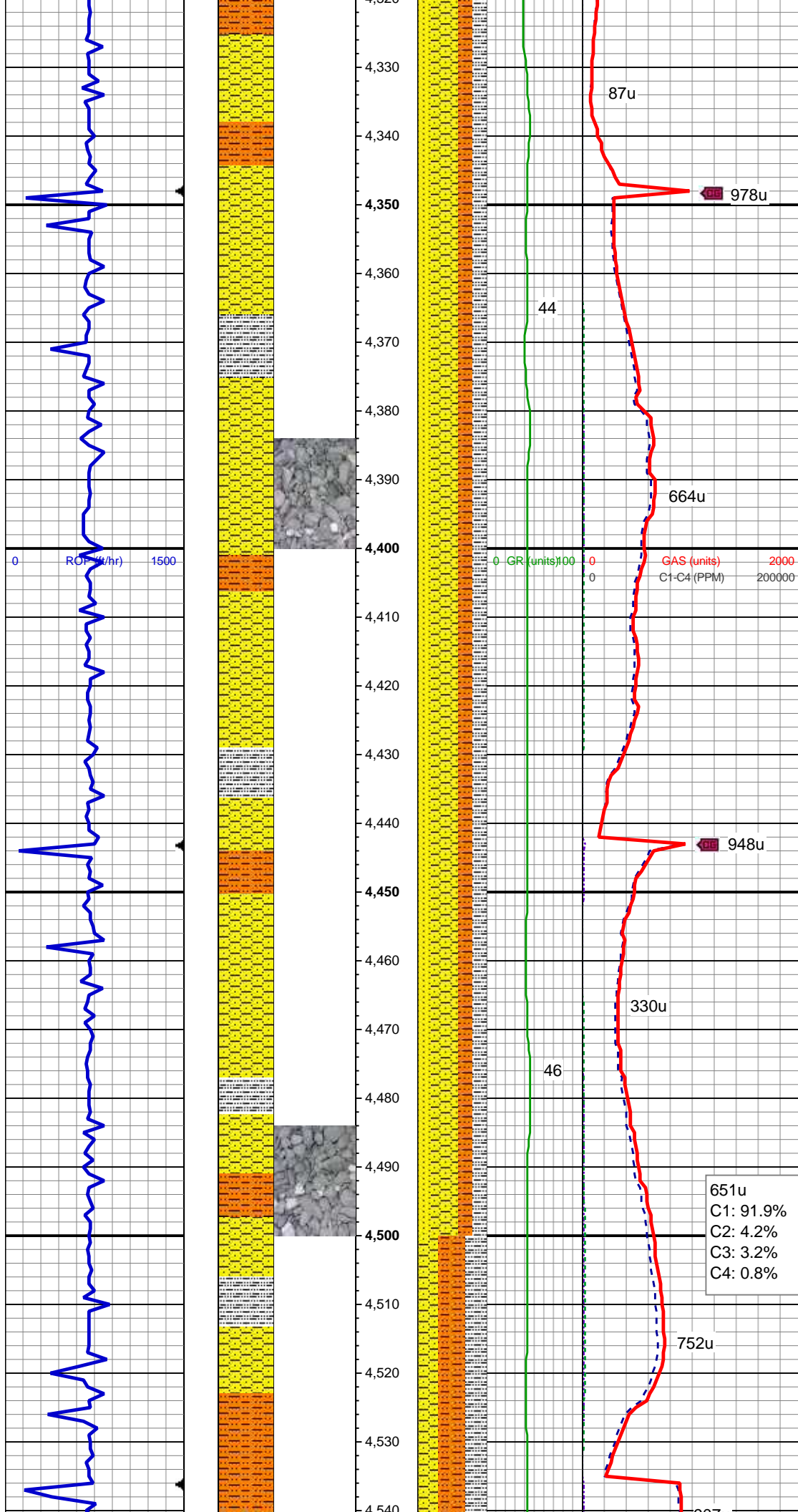
Mud Wt: 8.75 / 29 Vis

MD: 4,007'
TVD: 3,937.74'
Inclination: 5.36 °
Azimuth: 100.08 °
VS: -126.58'

SHY SS: lt gy- med gy, sl brn, occ pty
wh, pty s&p, mod frm - brit, vf gr-f gr, sb
ang - sb rnd, mod srt, arg cmt, grds ss ip,
tr glau, v sl calc, SLTY SH: lt-dk gy, occ
sl tan, sft-frm, sb blkly-sb pty, gritty, tr sdy
ip, v sl calc

MD: 4,102'
TVD: 4,032.41'





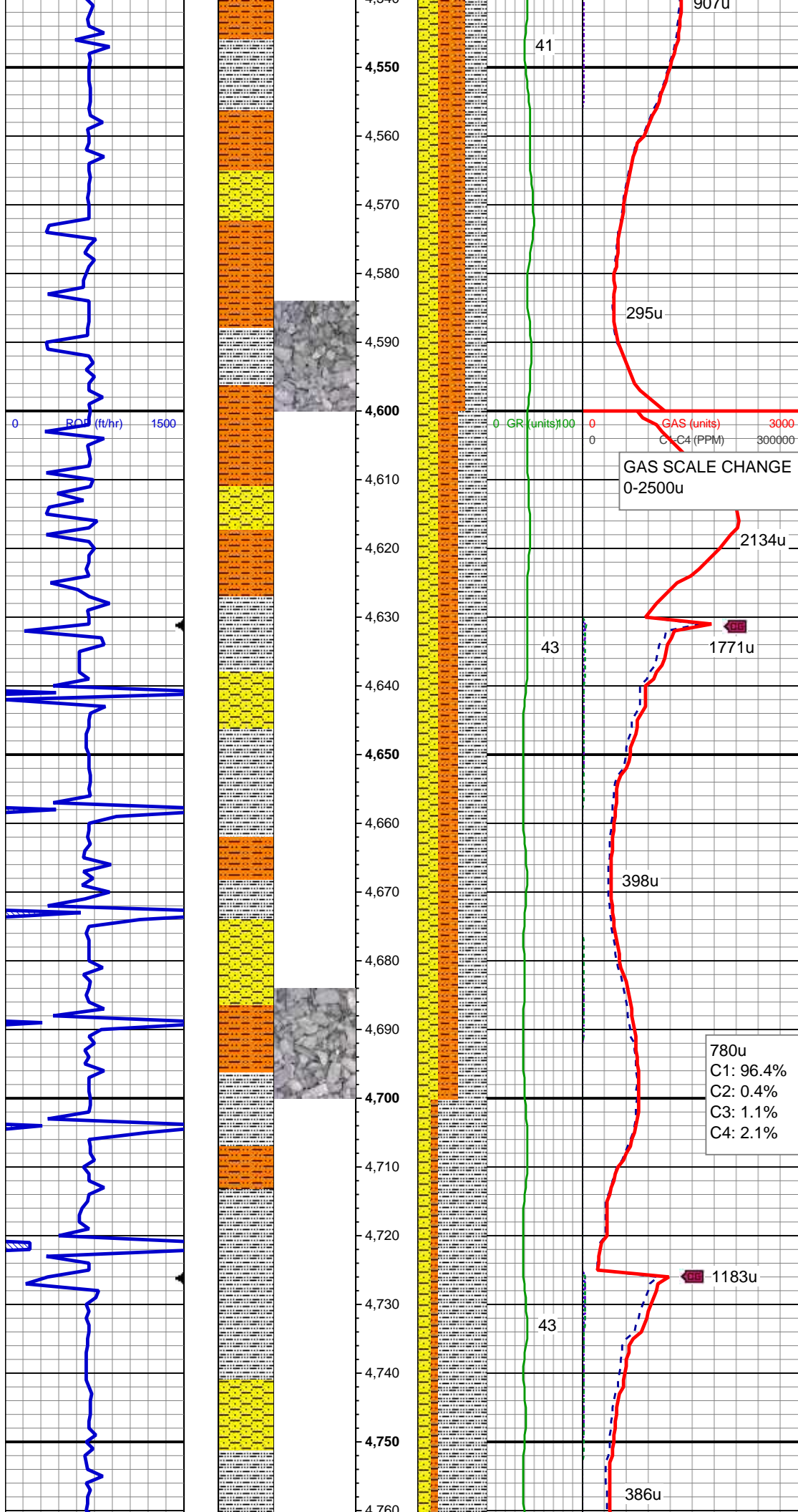
SHY SS: lt gy-med gy, pty s&p, mod
frm-brit, vf gr-f gr, sb ang-sb rnd, mod srt,
arg cmt, grds shy ss ip, tr glau, v sl calc,
SHY SLTST: lt gy-med gy, frm, sb blkly-sb
plty, gritty, sdy, sl calc cmt, abnt cly,
SLTY SH: lt gy-dk gy, frm, sb blkly-sb plty,
gritty, tr sdy ip, v sl calc, SS: med gy-wh,
s&p, vf-med grn, sb rd-sb ang, mod p srt,
frm-friable, occ glau, sl arg, sl calc

MD: 4,385'
TVD: 4,314.81'
Inclination: 3.78 °
Azimuth: 96.12 °
VS: -129.15'

SHY SS: lt gy-med gy, pty s&p, mod
frm-brit, vf gr-f gr, sb ang-sb rnd, mod srt,
arg cmt, grds shy ss ip, tr glau, v sl calc,
SHY SLTST: lt gy-med gy, frm, sb blkly-sb
plty, gritty, sdy, sl calc cmt, abnt cly,
SLTY SH: lt gy-dk gy, frm, sb blkly-sb plty,
gritty, tr sdy ip, v sl calc, SS: med gy-wh,
s&p, vf-med grn, sb rd-sb ang, mod p srt,
frm-friable, occ glau, sl arg, sl calc

MD: 4,479'
TVD: 4,408.61'
Inclination: 3.78 °
Azimuth: 89.71 °
VS: -128.69'

651u
C1: 91.9%
C2: 4.2%
C3: 3.2%
C4: 0.8%



SHY SS: lt gy-med gy, pty s&p, mod frm-brit, vf gr-f gr, sb ang-sb rnd, mod srt, arg cmt, grds shy ss ip, tr glau, v sl calc, SHY SLTST: lt gy-med gy, frm, sb blkly-sb pty, gritty, sdy, sl calc cmt, abnt cly, SLTY SH: lt gy-dk gy, frm, sb blkly-sb pty, gritty, tr sdy ip, v sl calc

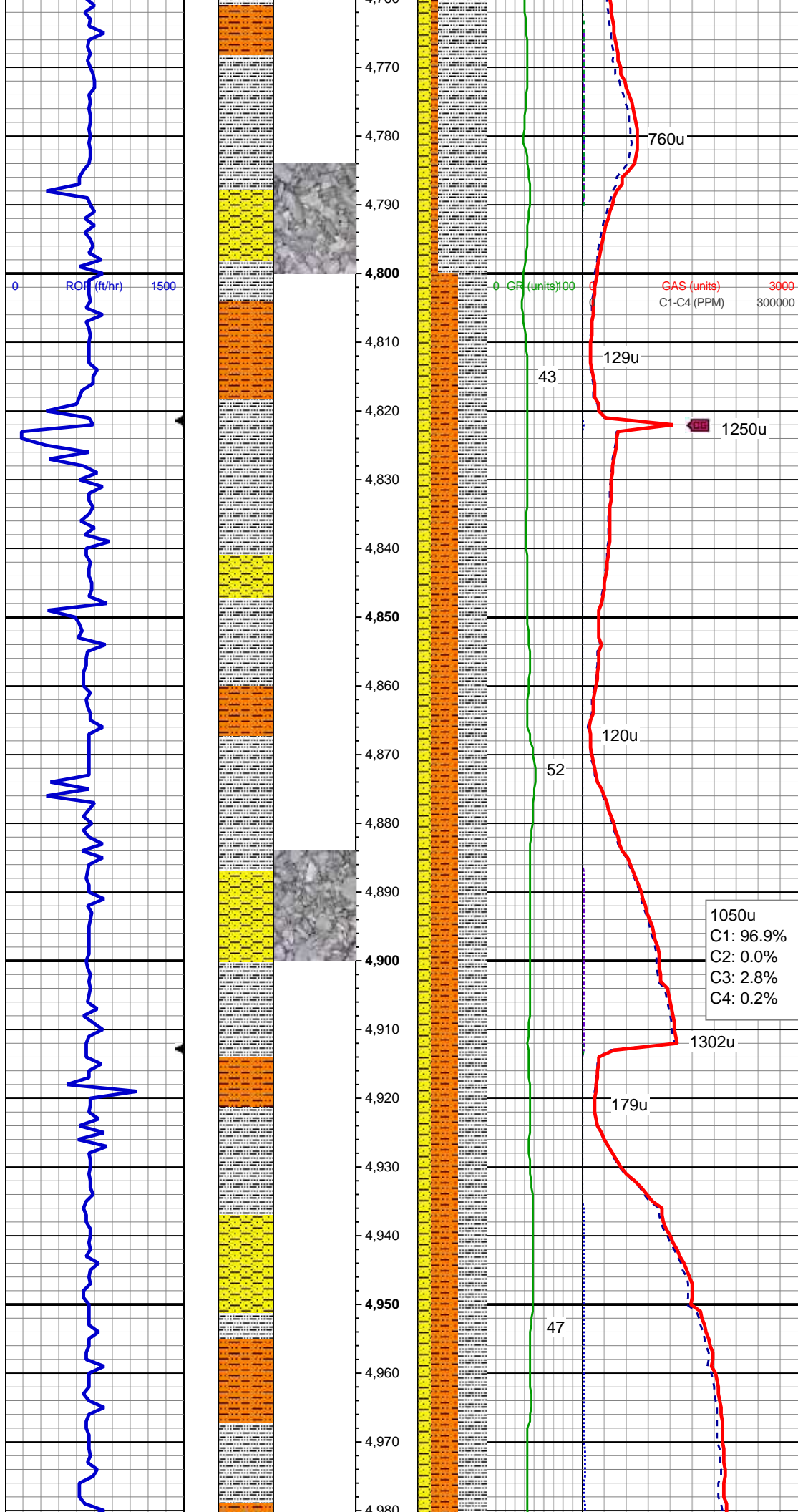
MD: 4,574'
TVD: 4,503.44'
Inclination: 2.99 °
Azimuth: 88.21 °
VS: -127.9'

Mud Wt: 8.75 / 33 Vis

SHY SS: lt gy-med gy, pty s&p, mod frm-brit, vf gr-f gr, sb ang-sb rnd, mod srt, arg cmt, grds shy ss ip, tr glau, v sl calc, SHY SLTST: lt gy-med gy, frm, sb blkly-sb pty, gritty, sdy, sl calc cmt, abnt cly, SLTY SH: lt gy-dk gy, frm, sb blkly-sb pty, gritty, tr sdy ip, v sl calc

MD: 4,669'
TVD: 4,598.32'
Inclination: 2.9 °
Azimuth: 81.62 °
VS: -126.87'

SLTY SH: lt gy-dk gy, frm, sb blkly-sb pty, gritty, tr sdy ip, v sl calc, SHY SS: lt gy-med gy, pty s&p, mod frm-brit, vf gr-f gr, sb ang-sb rnd, mod srt, arg cmt, grds shy ss ip, tr glau, v sl calc, SHY SLTST: lt gy-med gy, frm, sb blkly-sb pty, gritty, sdy, sl calc cmt, abnt cly



MD: 4,763'
TVD: 4,692.21'
Inclination: 2.46 °
Azimuth: 76.79 °
VS: -125.53'

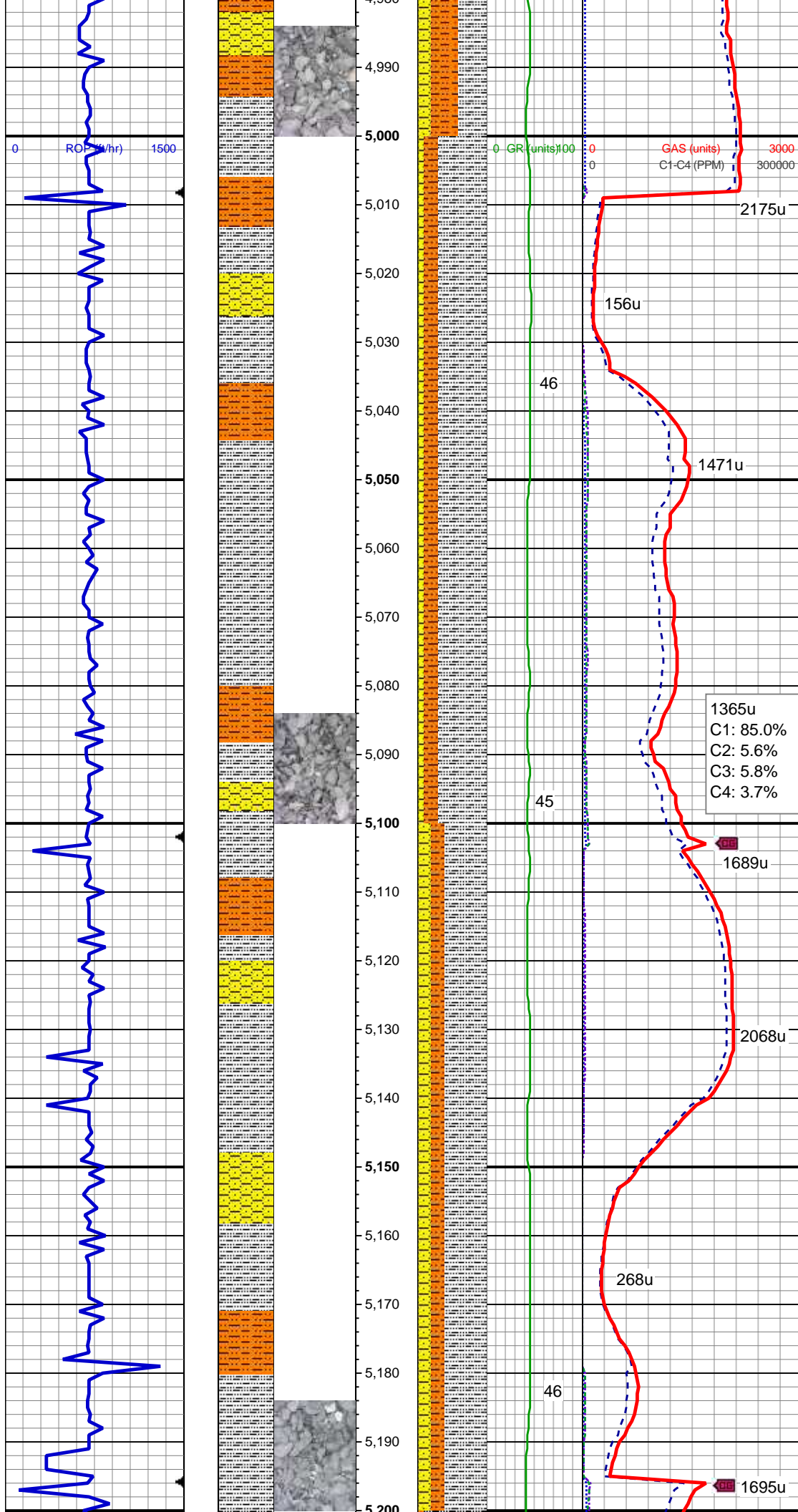
SLTY SH: lt gy-dk gy, frm, sb blk-y-sb plty, gritty, tr sdy ip, v sl calc, SHY SLTST: lt gy-med gy, frm, sb blk-y-sb plty, gritty, sdy, sl calc cmt, abnt cly, SHY SS: lt gy-med gy, pty s&p, mod frm-brit, vf gr-f gr, sb ang-sb rnd, mod srt, arg cmt, grds shy ss ip, tr glau, v sl calc

MD: 4,857'
TVD: 4,786.14'
Inclination: 2.11 °
Azimuth: 75.56 °
VS: -124.19'

Mud Wt: 9.20 / 33 Vis

SLTY SH: lt gy-dk gy, frm, sb blk-y-sb plty, gritty, tr sdy ip, v sl calc, SHY SLTST: lt gy-med gy, frm, sb blk-y-sb plty, gritty, sdy, sl calc cmt, abnt cly, SHY SS: lt gy-med gy, pty s&p, mod frm-brit, vf gr-f gr, sb ang-sb rnd, mod srt, arg cmt, grds shy ss ip, tr glau, v sl calc

MD: 4,952'
TVD: 4,881.08'
Inclination: 1.76 °
Azimuth: 70.9 °
VS: -122.9'

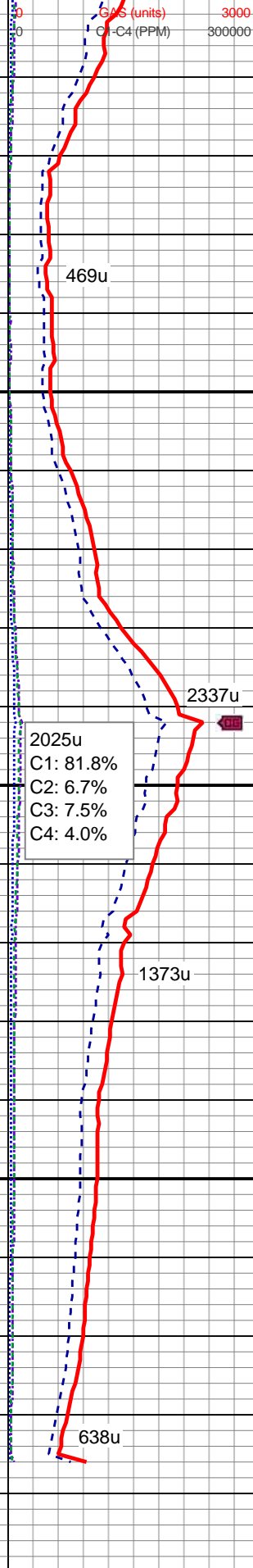
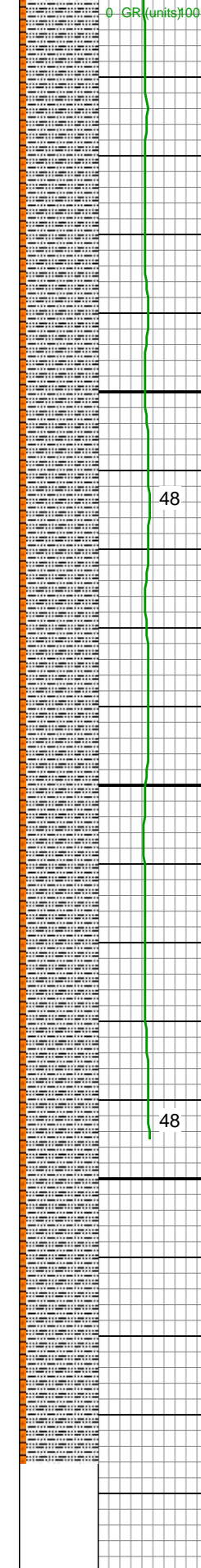
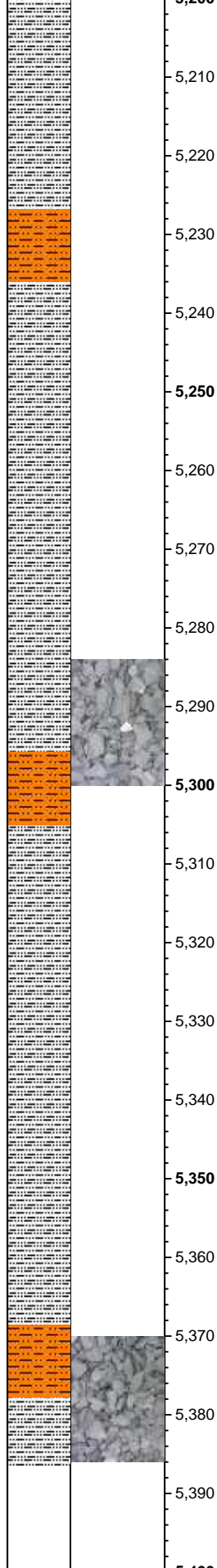
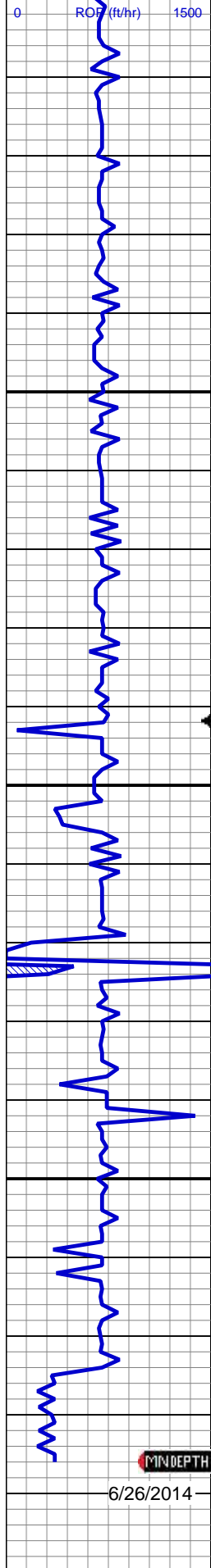


MD: 5,046'
TVD: 4,975.06'
Inclination: 1.06 °
Azimuth: 59.56 °
VS: -121.73'

SLTY SH: lt gy-dk gy, frm, sb blk-y-sb plty, gritty, tr sdy ip, v sl calc, SHY SLTST: lt gy-med gy, frm, sb blk-y-sb plty, gritty, sdy, sl calc cmt, abnt cly, SHY SS: lt gy-med gy, pty s&p, mod frm-brit, vf gr-f gr, sb ang-sb rnd, mod srt, arg cmt, grds shy ss ip, tr glau, v sl calc

MD: 5,141'
TVD: 5,070.04'
Inclination: 0.79 °
Azimuth: 68.61 °
VS: -120.88'

SLTY SH: lt gy-dk gy, frm, sb blk-y-sb plty, gritty, tr sdy ip, v sl calc, SHY SLTST: lt gy-med gy, frm, sb blk-y-sb plty, gritty, sdy, sl calc cmt, abnt cly, SHY SS: lt gy-med gy, pty s&p, mod frm-brit, vf gr-f gr, sb ang-sb rnd, mod srt, arg cmt, grds shy ss ip, tr glau, v sl calc



MD: 5,235'
TVD: 5,164.02'
Inclination: 2.02 °
Azimuth: 119.68 °
VS: -121.2'

SLTY SH: lt gy-dk gy, frm, sb blk-y-sb plty, gritty, tr sdy ip, v sl calc, SHY SLTST: lt gy-med gy, frm, sb blk-y-sb plty, gritty, sdy, sl calc cmt

Mud Wt: 9.20 / 50 Vis

MD: 5,330'
TVD: 5,258.97'
Inclination: 1.49 °
Azimuth: 113.35 °
VS: -122.19'

SLTY SH: lt gy-dk gy, frm, sb blk-y-sb plty, gritty, tr sdy ip, v sl calc, SHY SLTST: lt gy-med gy, frm, sb blk-y-sb plty, gritty, sdy, sl calc cmt

TOOH FOR BHA #2 @ 5386' MD
6/25/14 21:16 MST
LOG CONTINUES ON MPlot
"RICO LC29-72-1HNA(Horz)"

THANK YOU FOR USING
COLUMBINE LOGGING INC