

Synergy Resources

Well Name: **SRC Cannon 14-16CHZ**

Surface Location: SRC Cannon Pad Sec.16-T4N-R68W

North American Datum 1983 , US State Plane 1983 , Colorado Northern Zone

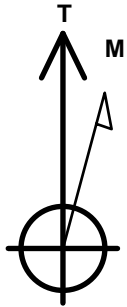
Ground Elevation: 4929.0

+N/-S +E/-W Northing Easting Latitude Longitude Slot
0.0 0.0 1355778.98 3139483.89 40.308934 -104.999848

Ensign Rig #131 -RKB - 13.5' WELL @ 4942.5ft (Ensign Rig #131 -RKB - 13.5')

WELLBORE TARGET DETAILS

Name	TVD	+N/-S	+E/-W	Shape
SHL 1016'FSL & 280'FEL	1.0	0.0	0.0	Point
BHL 188'FSL & 475'FWL	6170.5	-871.3	-4537.0	Point
WP1 (14-16CHZ)	6429.5	-845.3	-1801.8	Point



Azimuths to True North
Magnetic North: 8.50°

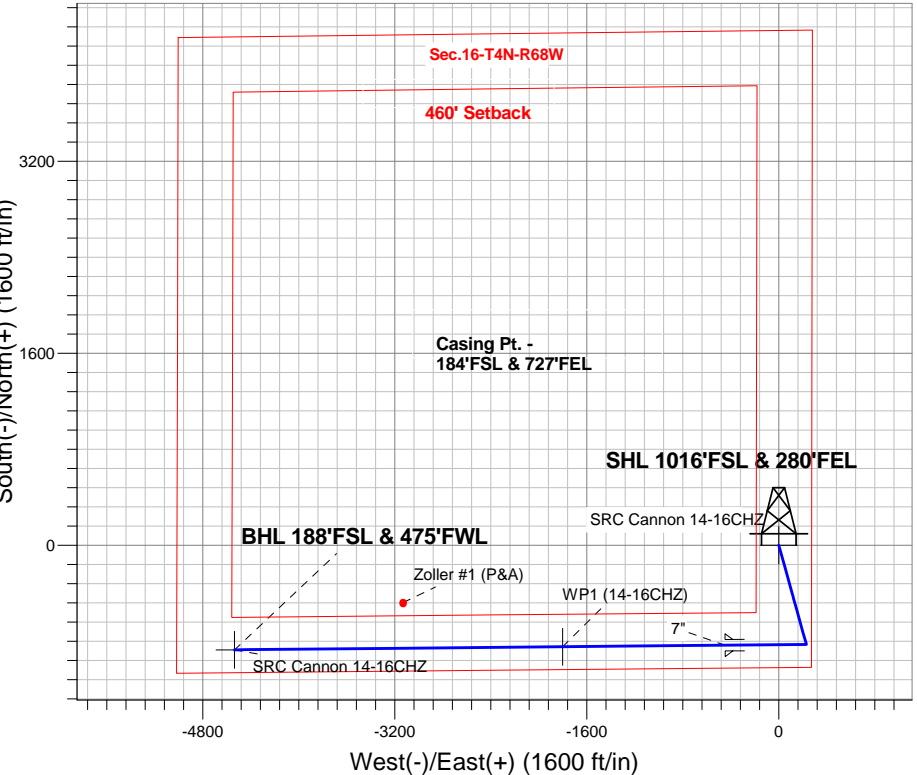
Magnetic Field
Strength: 52678.9snT
Dip Angle: 66.81°
Date: 1/20/2015
Model: IGRF2010

SRC Cannon Pad Sec.16-T4N-R68W
SRC Cannon 14-16CHZ
Plan #4 (1-23-15)
15:05, January 23 2015

ANNOTATIONS

TVD	MD	Annotation
400.0	400.0	KOP - Start Build 1.50
4397.5	4476.5	Start Drop -1.50
5878.1	5963.1	KOP #2 - Start Build 9.00
6429.5	8359.9	Start DLS 2.00 TFO 0.06
6170.5	11107.5	TD at 11107.5

South(-)/North(+) (1600 ft/in)

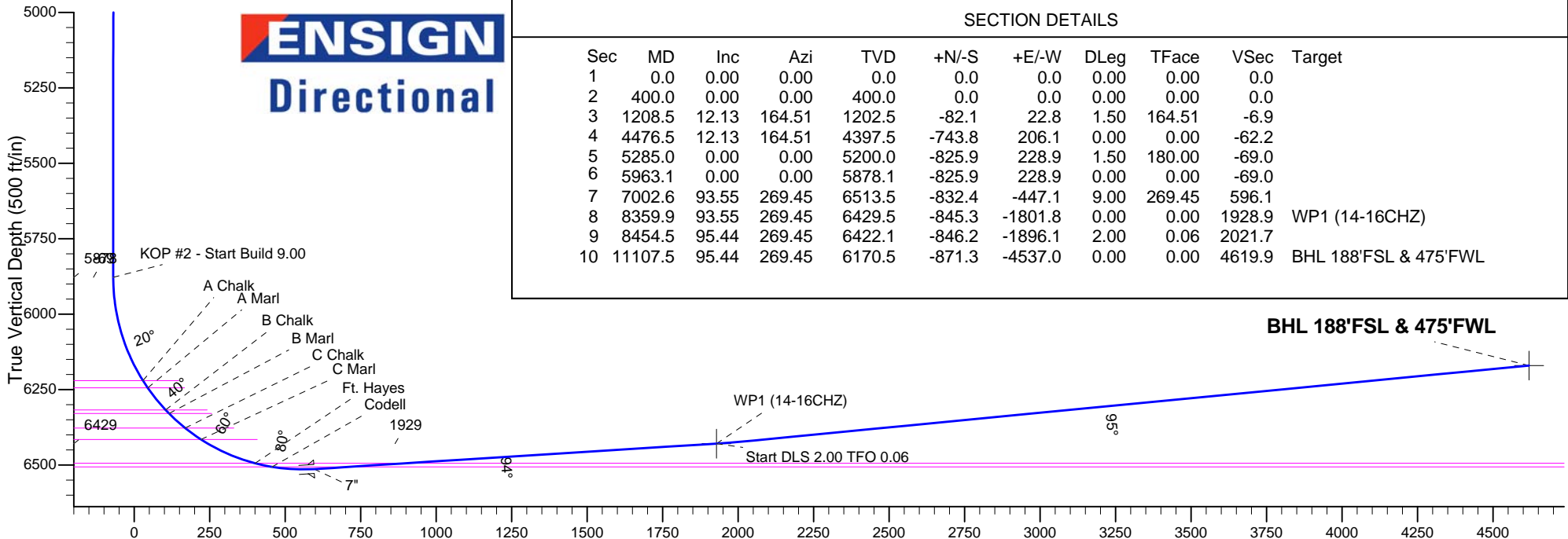


West(-)/East(+) (1600 ft/in)

ENSIGN
Directional

SECTION DETAILS

Sec	MD	Inc	Azi	TVD	+N/-S	+E/-W	DLeg	TFace	VSec	Target
1	0.0	0.00	0.00	0.0	0.0	0.0	0.00	0.00	0.0	
2	400.0	0.00	0.00	400.0	0.0	0.0	0.00	0.00	0.0	
3	1208.5	12.13	164.51	1202.5	-82.1	22.8	1.50	164.51	-6.9	
4	4476.5	12.13	164.51	4397.5	-743.8	206.1	0.00	0.00	-62.2	
5	5285.0	0.00	0.00	5200.0	-825.9	228.9	1.50	180.00	-69.0	
6	5963.1	0.00	0.00	5878.1	-825.9	228.9	0.00	0.00	-69.0	
7	7002.6	93.55	269.45	6513.5	-832.4	-447.1	9.00	269.45	596.1	
8	8359.9	93.55	269.45	6429.5	-845.3	-1801.8	0.00	0.00	1928.9	WP1 (14-16CHZ)
9	8454.5	95.44	269.45	6422.1	-846.2	-1896.1	2.00	0.06	2021.7	
10	11107.5	95.44	269.45	6170.5	-871.3	-4537.0	0.00	0.00	4619.9	BHL 188'FSL & 475'FWL



Vertical Section at 259.13° (500 ft/in)



Synergy Resources

SEC.16-T4N-R68W

SRC Cannon Pad Sec.16-T4N-R68W

SRC Cannon 14-16CHZ

Wellbore #1

Plan: Plan #4 (1-23-15)

Standard Planning Report

23 January, 2015

Database:	Landmark	Local Co-ordinate Reference:	Well SRC Cannon 14-16CHZ
Company:	Synergy Resources	TVD Reference:	WELL @ 4942.5ft (Ensign Rig #131 -RKB - 13.5')
Project:	SEC.16-T4N-R68W	MD Reference:	WELL @ 4942.5ft (Ensign Rig #131 -RKB - 13.5')
Site:	SRC Cannon Pad Sec.16-T4N-R68W	North Reference:	True
Well:	SRC Cannon 14-16CHZ	Survey Calculation Method:	Minimum Curvature
Wellbore:	Wellbore #1		
Design:	Plan #4 (1-23-15)		

Project	SEC.16-T4N-R68W, Weld County, CO		
Map System:	US State Plane 1983	System Datum:	Mean Sea Level
Geo Datum:	North American Datum 1983		Using Well Reference Point
Map Zone:	Colorado Northern Zone		Using geodetic scale factor

Site	SRC Cannon Pad Sec.16-T4N-R68W				
Site Position:		Northing:	1,355,779.01 ft	Latitude:	40.308934
From:	Lat/Long	Easting:	3,139,483.89 ft	Longitude:	-104.999848
Position Uncertainty:	0.0 ft	Slot Radius:	"	Grid Convergence:	0.32 °

Well	SRC Cannon 14-16CHZ					
Well Position	+N-S	0.0 ft	Northing:	1,355,778.98 ft	Latitude:	40.308934
	+E-W	0.0 ft	Easting:	3,139,483.89 ft	Longitude:	-104.999848
Position Uncertainty		0.0 ft	Wellhead Elevation:	ft	Ground Level:	4,929.0 ft

Wellbore	Wellbore #1				
Magnetics	Model Name	Sample Date	Declination (°)	Dip Angle (°)	Field Strength (nT)
	IGRF2010	1/20/2015	8.50	66.81	52,679

Design	Plan #4 (1-23-15)			
Audit Notes:				
Version:	Phase:	PROTOTYPE	Tie On Depth:	0.0
Vertical Section:	Depth From (TVD) (ft)	+N/-S (ft)	+E/-W (ft)	Direction (°)
	0.0	0.0	0.0	259.13

Plan Sections										
Measured Depth (ft)	Inclination (°)	Azimuth (°)	Vertical Depth (ft)	+N/-S (ft)	+E/-W (ft)	Dogleg Rate (°/100ft)	Build Rate (°/100ft)	Turn Rate (°/100ft)	TFO (°)	Target
0.0	0.00	0.00	0.0	0.0	0.0	0.00	0.00	0.00	0.00	
400.0	0.00	0.00	400.0	0.0	0.0	0.00	0.00	0.00	0.00	
1,208.5	12.13	164.51	1,202.5	-82.1	22.8	1.50	1.50	0.00	164.51	
4,476.5	12.13	164.51	4,397.5	-743.8	206.1	0.00	0.00	0.00	0.00	
5,285.0	0.00	0.00	5,200.0	-825.9	228.9	1.50	-1.50	0.00	180.00	
5,963.1	0.00	0.00	5,878.1	-825.9	228.9	0.00	0.00	0.00	0.00	
7,002.6	93.55	269.45	6,513.5	-832.4	-447.1	9.00	9.00	0.00	269.45	
8,359.9	93.55	269.45	6,429.5	-845.3	-1,801.8	0.00	0.00	0.00	0.00	WP1 (14-16CHZ)
8,454.5	95.44	269.45	6,422.1	-846.2	-1,896.1	2.00	2.00	0.00	0.06	
11,107.5	95.44	269.45	6,170.5	-871.3	-4,537.0	0.00	0.00	0.00	0.00	BHL 188'FSL & 475'

Database:	Landmark	Local Co-ordinate Reference:	Well SRC Cannon 14-16CHZ
Company:	Synergy Resources	TVD Reference:	WELL @ 4942.5ft (Ensign Rig #131 -RKB - 13.5')
Project:	SEC.16-T4N-R68W	MD Reference:	WELL @ 4942.5ft (Ensign Rig #131 -RKB - 13.5')
Site:	SRC Cannon Pad Sec.16-T4N-R68W	North Reference:	True
Well:	SRC Cannon 14-16CHZ	Survey Calculation Method:	Minimum Curvature
Wellbore:	Wellbore #1		
Design:	Plan #4 (1-23-15)		

Planned Survey

Measured Depth (ft)	Inclination (°)	Azimuth (°)	Vertical Depth (ft)	+N/-S (ft)	+E/-W (ft)	Vertical Section (ft)	Dogleg Rate (°/100ft)	Build Rate (°/100ft)	Turn Rate (°/100ft)
0.0	0.00	0.00	0.0	0.0	0.0	0.0	0.00	0.00	0.00
1.0	0.00	0.00	1.0	0.0	0.0	0.0	0.00	0.00	0.00
SHL 1016'FSL & 280'FEL									
100.0	0.00	0.00	100.0	0.0	0.0	0.0	0.00	0.00	0.00
200.0	0.00	0.00	200.0	0.0	0.0	0.0	0.00	0.00	0.00
300.0	0.00	0.00	300.0	0.0	0.0	0.0	0.00	0.00	0.00
400.0	0.00	0.00	400.0	0.0	0.0	0.0	0.00	0.00	0.00
KOP - Start Build 1.50									
500.0	1.50	164.51	500.0	-1.3	0.3	-0.1	1.50	1.50	0.00
600.0	3.00	164.51	599.9	-5.0	1.4	-0.4	1.50	1.50	0.00
700.0	4.50	164.51	699.7	-11.3	3.1	-0.9	1.50	1.50	0.00
800.0	6.00	164.51	799.3	-20.2	5.6	-1.7	1.50	1.50	0.00
900.0	7.50	164.51	898.6	-31.5	8.7	-2.6	1.50	1.50	0.00
1,000.0	9.00	164.51	997.5	-45.3	12.6	-3.8	1.50	1.50	0.00
1,100.0	10.50	164.51	1,096.1	-61.6	17.1	-5.2	1.50	1.50	0.00
1,200.0	12.00	164.51	1,194.2	-80.4	22.3	-6.7	1.50	1.50	0.00
1,208.5	12.13	164.51	1,202.5	-82.1	22.8	-6.9	1.50	1.50	0.00
1,300.0	12.13	164.51	1,291.9	-100.7	27.9	-8.4	0.00	0.00	0.00
1,400.0	12.13	164.51	1,389.7	-120.9	33.5	-10.1	0.00	0.00	0.00
1,500.0	12.13	164.51	1,487.5	-141.2	39.1	-11.8	0.00	0.00	0.00
1,600.0	12.13	164.51	1,585.2	-161.4	44.7	-13.5	0.00	0.00	0.00
1,700.0	12.13	164.51	1,683.0	-181.7	50.3	-15.2	0.00	0.00	0.00
1,800.0	12.13	164.51	1,780.8	-201.9	56.0	-16.9	0.00	0.00	0.00
1,900.0	12.13	164.51	1,878.5	-222.1	61.6	-18.6	0.00	0.00	0.00
2,000.0	12.13	164.51	1,976.3	-242.4	67.2	-20.3	0.00	0.00	0.00
2,100.0	12.13	164.51	2,074.1	-262.6	72.8	-21.9	0.00	0.00	0.00
2,200.0	12.13	164.51	2,171.9	-282.9	78.4	-23.6	0.00	0.00	0.00
2,300.0	12.13	164.51	2,269.6	-303.1	84.0	-25.3	0.00	0.00	0.00
2,400.0	12.13	164.51	2,367.4	-323.4	89.6	-27.0	0.00	0.00	0.00
2,500.0	12.13	164.51	2,465.2	-343.6	95.2	-28.7	0.00	0.00	0.00
2,600.0	12.13	164.51	2,562.9	-363.9	100.8	-30.4	0.00	0.00	0.00
2,700.0	12.13	164.51	2,660.7	-384.1	106.5	-32.1	0.00	0.00	0.00
2,800.0	12.13	164.51	2,758.5	-404.3	112.1	-33.8	0.00	0.00	0.00
2,900.0	12.13	164.51	2,856.2	-424.6	117.7	-35.5	0.00	0.00	0.00
3,000.0	12.13	164.51	2,954.0	-444.8	123.3	-37.2	0.00	0.00	0.00
3,100.0	12.13	164.51	3,051.8	-465.1	128.9	-38.9	0.00	0.00	0.00
3,200.0	12.13	164.51	3,149.5	-485.3	134.5	-40.6	0.00	0.00	0.00
3,300.0	12.13	164.51	3,247.3	-505.6	140.1	-42.3	0.00	0.00	0.00
3,400.0	12.13	164.51	3,345.1	-525.8	145.7	-43.9	0.00	0.00	0.00
3,500.0	12.13	164.51	3,442.8	-546.1	151.3	-45.6	0.00	0.00	0.00
3,600.0	12.13	164.51	3,540.6	-566.3	157.0	-47.3	0.00	0.00	0.00
3,700.0	12.13	164.51	3,638.4	-586.6	162.6	-49.0	0.00	0.00	0.00
3,800.0	12.13	164.51	3,736.1	-606.8	168.2	-50.7	0.00	0.00	0.00
3,900.0	12.13	164.51	3,833.9	-627.0	173.8	-52.4	0.00	0.00	0.00
4,000.0	12.13	164.51	3,931.7	-647.3	179.4	-54.1	0.00	0.00	0.00
4,100.0	12.13	164.51	4,029.4	-667.5	185.0	-55.8	0.00	0.00	0.00
4,200.0	12.13	164.51	4,127.2	-687.8	190.6	-57.5	0.00	0.00	0.00
4,300.0	12.13	164.51	4,225.0	-708.0	196.2	-59.2	0.00	0.00	0.00
4,400.0	12.13	164.51	4,322.8	-728.3	201.8	-60.9	0.00	0.00	0.00
4,476.5	12.13	164.51	4,397.5	-743.8	206.1	-62.2	0.00	0.00	0.00
Start Drop -1.50									
4,500.0	11.77	164.51	4,420.5	-748.4	207.4	-62.5	1.50	-1.50	0.00

Database:	Landmark	Local Co-ordinate Reference:	Well SRC Cannon 14-16CHZ
Company:	Synergy Resources	TVD Reference:	WELL @ 4942.5ft (Ensign Rig #131 -RKB -13.5')
Project:	SEC.16-T4N-R68W	MD Reference:	WELL @ 4942.5ft (Ensign Rig #131 -RKB -13.5')
Site:	SRC Cannon Pad Sec.16-T4N-R68W	North Reference:	True
Well:	SRC Cannon 14-16CHZ	Survey Calculation Method:	Minimum Curvature
Wellbore:	Wellbore #1		
Design:	Plan #4 (1-23-15)		

Planned Survey									
Measured Depth (ft)	Inclination (°)	Azimuth (°)	Vertical Depth (ft)	+N/-S (ft)	+E/-W (ft)	Vertical Section (ft)	Dogleg Rate (°/100ft)	Build Rate (°/100ft)	Turn Rate (°/100ft)
4,600.0	10.27	164.51	4,518.7	-766.9	212.5	-64.1	1.50	-1.50	0.00
4,700.0	8.77	164.51	4,617.3	-782.8	217.0	-65.4	1.50	-1.50	0.00
4,800.0	7.27	164.51	4,716.3	-796.3	220.7	-66.5	1.50	-1.50	0.00
4,900.0	5.77	164.51	4,815.7	-807.2	223.7	-67.5	1.50	-1.50	0.00
5,000.0	4.27	164.51	4,915.3	-815.7	226.1	-68.2	1.50	-1.50	0.00
5,100.0	2.77	164.51	5,015.1	-821.6	227.7	-68.7	1.50	-1.50	0.00
5,200.0	1.27	164.51	5,115.0	-825.0	228.6	-68.9	1.50	-1.50	0.00
5,285.0	0.00	0.00	5,200.0	-825.9	228.9	-69.0	1.50	-1.50	0.00
5,300.0	0.00	0.00	5,215.0	-825.9	228.9	-69.0	0.00	0.00	0.00
5,400.0	0.00	0.00	5,315.0	-825.9	228.9	-69.0	0.00	0.00	0.00
5,500.0	0.00	0.00	5,415.0	-825.9	228.9	-69.0	0.00	0.00	0.00
5,600.0	0.00	0.00	5,515.0	-825.9	228.9	-69.0	0.00	0.00	0.00
5,700.0	0.00	0.00	5,615.0	-825.9	228.9	-69.0	0.00	0.00	0.00
5,800.0	0.00	0.00	5,715.0	-825.9	228.9	-69.0	0.00	0.00	0.00
5,900.0	0.00	0.00	5,815.0	-825.9	228.9	-69.0	0.00	0.00	0.00
5,963.1	0.00	0.00	5,878.1	-825.9	228.9	-69.0	0.00	0.00	0.00
KOP #2 - Start Build 9.00									
6,000.0	3.32	269.45	5,915.0	-825.9	227.8	-68.0	8.99	8.99	0.00
6,100.0	12.32	269.45	6,014.0	-826.0	214.2	-54.6	9.00	9.00	0.00
6,200.0	21.32	269.45	6,109.6	-826.3	185.3	-26.2	9.00	9.00	0.00
6,300.0	30.32	269.45	6,199.5	-826.7	141.8	16.6	9.00	9.00	0.00
6,324.6	32.53	269.45	6,220.5	-826.9	129.0	29.2	9.00	9.00	0.00
A Chalk									
6,353.5	35.13	269.45	6,244.5	-827.0	112.9	45.1	9.00	9.00	0.00
A Marl									
6,400.0	39.32	269.45	6,281.5	-827.3	84.8	72.8	9.00	9.00	0.00
6,448.0	43.64	269.45	6,317.5	-827.6	53.0	104.0	9.00	9.00	0.00
B Chalk									
6,464.8	45.15	269.45	6,329.5	-827.7	41.2	115.6	9.00	9.00	0.00
B Marl									
6,500.0	48.32	269.45	6,353.6	-827.9	15.6	140.8	9.00	9.00	0.00
6,537.2	51.66	269.45	6,377.5	-828.2	-12.8	168.8	9.00	9.00	0.00
C Chalk									
6,600.0	57.32	269.45	6,414.0	-828.7	-64.0	219.1	9.00	9.00	0.00
6,602.8	57.57	269.45	6,415.5	-828.7	-66.3	221.4	9.00	9.00	0.00
C Marl									
6,700.0	66.32	269.45	6,461.2	-829.5	-152.0	305.7	9.00	9.00	0.00
6,800.0	75.32	269.45	6,494.0	-830.4	-246.4	398.6	9.00	9.00	0.00
6,802.1	75.50	269.45	6,494.5	-830.5	-248.3	400.5	9.00	9.00	0.00
Ft. Hayes									
6,860.4	80.76	269.45	6,506.5	-831.0	-305.4	456.7	9.00	9.00	0.00
Codell									
6,900.0	84.32	269.45	6,511.6	-831.4	-344.7	495.3	9.00	9.00	0.00
7,000.0	93.32	269.45	6,513.7	-832.3	-444.5	593.5	9.00	9.00	0.00
7,002.6	93.55	269.45	6,513.5	-832.4	-447.1	596.1	8.89	8.89	0.00
7"									
7,100.0	93.55	269.45	6,507.5	-833.3	-544.3	691.7	0.00	0.00	0.00
7,200.0	93.55	269.45	6,501.3	-834.2	-644.2	789.9	0.00	0.00	0.00
7,300.0	93.55	269.45	6,495.1	-835.2	-744.0	888.1	0.00	0.00	0.00
7,400.0	93.55	269.45	6,488.9	-836.1	-843.8	986.3	0.00	0.00	0.00
7,500.0	93.55	269.45	6,482.7	-837.1	-943.6	1,084.5	0.00	0.00	0.00

Database:	Landmark	Local Co-ordinate Reference:	Well SRC Cannon 14-16CHZ
Company:	Synergy Resources	TVD Reference:	WELL @ 4942.5ft (Ensign Rig #131 -RKB - 13.5')
Project:	SEC.16-T4N-R68W	MD Reference:	WELL @ 4942.5ft (Ensign Rig #131 -RKB - 13.5')
Site:	SRC Cannon Pad Sec.16-T4N-R68W	North Reference:	True
Well:	SRC Cannon 14-16CHZ	Survey Calculation Method:	Minimum Curvature
Wellbore:	Wellbore #1		
Design:	Plan #4 (1-23-15)		

Planned Survey									
Measured Depth (ft)	Inclination (°)	Azimuth (°)	Vertical Depth (ft)	+N/-S (ft)	+E/-W (ft)	Vertical Section (ft)	Dogleg Rate (°/100ft)	Build Rate (°/100ft)	Turn Rate (°/100ft)
7,600.0	93.55	269.45	6,476.6	-838.1	-1,043.4	1,182.7	0.00	0.00	0.00
7,700.0	93.55	269.45	6,470.4	-839.0	-1,143.2	1,280.9	0.00	0.00	0.00
7,800.0	93.55	269.45	6,464.2	-840.0	-1,243.0	1,379.1	0.00	0.00	0.00
7,900.0	93.55	269.45	6,458.0	-840.9	-1,342.8	1,477.3	0.00	0.00	0.00
8,000.0	93.55	269.45	6,451.8	-841.9	-1,442.6	1,575.5	0.00	0.00	0.00
8,100.0	93.55	269.45	6,445.6	-842.8	-1,542.4	1,673.7	0.00	0.00	0.00
8,200.0	93.55	269.45	6,439.4	-843.8	-1,642.2	1,771.9	0.00	0.00	0.00
8,300.0	93.55	269.45	6,433.2	-844.7	-1,742.0	1,870.0	0.00	0.00	0.00
8,359.9	93.55	269.45	6,429.5	-845.3	-1,801.8	1,928.9	0.00	0.00	0.00
Start DLS 2.00 TFO 0.06 - WP1 (14-16CHZ)									
8,400.0	94.35	269.45	6,426.7	-845.7	-1,841.8	1,968.2	2.00	2.00	0.00
8,454.5	95.44	269.45	6,422.1	-846.2	-1,896.1	2,021.7	2.00	2.00	0.00
8,500.0	95.44	269.45	6,417.8	-846.6	-1,941.4	2,066.2	0.00	0.00	0.00
8,600.0	95.44	269.45	6,408.3	-847.6	-2,040.9	2,164.1	0.00	0.00	0.00
8,700.0	95.44	269.45	6,398.8	-848.5	-2,140.5	2,262.1	0.00	0.00	0.00
8,800.0	95.44	269.45	6,389.3	-849.5	-2,240.0	2,360.0	0.00	0.00	0.00
8,900.0	95.44	269.45	6,379.8	-850.4	-2,339.5	2,458.0	0.00	0.00	0.00
9,000.0	95.44	269.45	6,370.4	-851.4	-2,439.1	2,555.9	0.00	0.00	0.00
9,100.0	95.44	269.45	6,360.9	-852.3	-2,538.6	2,653.8	0.00	0.00	0.00
9,200.0	95.44	269.45	6,351.4	-853.3	-2,638.2	2,751.8	0.00	0.00	0.00
9,300.0	95.44	269.45	6,341.9	-854.2	-2,737.7	2,849.7	0.00	0.00	0.00
9,400.0	95.44	269.45	6,332.4	-855.2	-2,837.3	2,947.6	0.00	0.00	0.00
9,500.0	95.44	269.45	6,322.9	-856.1	-2,936.8	3,045.6	0.00	0.00	0.00
9,600.0	95.44	269.45	6,313.5	-857.1	-3,036.4	3,143.5	0.00	0.00	0.00
9,700.0	95.44	269.45	6,304.0	-858.0	-3,135.9	3,241.4	0.00	0.00	0.00
9,800.0	95.44	269.45	6,294.5	-858.9	-3,235.4	3,339.4	0.00	0.00	0.00
9,900.0	95.44	269.45	6,285.0	-859.9	-3,335.0	3,437.3	0.00	0.00	0.00
10,000.0	95.44	269.45	6,275.5	-860.8	-3,434.5	3,535.3	0.00	0.00	0.00
10,100.0	95.44	269.45	6,266.0	-861.8	-3,534.1	3,633.2	0.00	0.00	0.00
10,200.0	95.44	269.45	6,256.6	-862.7	-3,633.6	3,731.1	0.00	0.00	0.00
10,300.0	95.44	269.45	6,247.1	-863.7	-3,733.2	3,829.1	0.00	0.00	0.00
10,400.0	95.44	269.45	6,237.6	-864.6	-3,832.7	3,927.0	0.00	0.00	0.00
10,500.0	95.44	269.45	6,228.1	-865.6	-3,932.3	4,024.9	0.00	0.00	0.00
10,600.0	95.44	269.45	6,218.6	-866.5	-4,031.8	4,122.9	0.00	0.00	0.00
10,700.0	95.44	269.45	6,209.1	-867.5	-4,131.4	4,220.8	0.00	0.00	0.00
10,800.0	95.44	269.45	6,199.7	-868.4	-4,230.9	4,318.8	0.00	0.00	0.00
10,900.0	95.44	269.45	6,190.2	-869.4	-4,330.4	4,416.7	0.00	0.00	0.00
11,000.0	95.44	269.45	6,180.7	-870.3	-4,430.0	4,514.6	0.00	0.00	0.00
11,100.0	95.44	269.45	6,171.2	-871.3	-4,529.5	4,612.6	0.00	0.00	0.00
11,107.5	95.44	269.45	6,170.5	-871.3	-4,537.0	4,619.9	0.00	0.00	0.00
BHL 188'FSL & 475'FWL									

Database:	Landmark	Local Co-ordinate Reference:	Well SRC Cannon 14-16CHZ
Company:	Synergy Resources	TVD Reference:	WELL @ 4942.5ft (Ensign Rig #131 -RKB - 13.5')
Project:	SEC.16-T4N-R68W	MD Reference:	WELL @ 4942.5ft (Ensign Rig #131 -RKB - 13.5')
Site:	SRC Cannon Pad Sec.16-T4N-R68W	North Reference:	True
Well:	SRC Cannon 14-16CHZ	Survey Calculation Method:	Minimum Curvature
Wellbore:	Wellbore #1		
Design:	Plan #4 (1-23-15)		

Targets									
Target Name - hit/miss target - Shape	Dip Angle (°)	Dip Dir. (°)	TVD (ft)	+N/-S (ft)	+E/-W (ft)	Northing (ft)	Easting (ft)	Latitude	Longitude
SHL 1016'FSL & 280'I - plan hits target center - Point	0.00	0.00	1.0	0.0	0.0	1,355,779.01	3,139,483.89	40.308934	-104.999848
BHL 188'FSL & 475'F - plan hits target center - Point	0.00	0.00	6,170.5	-871.3	-4,537.0	1,354,882.11	3,134,952.10	40.306541	-105.016115
WP1 (14-16CHZ) - plan hits target center - Point	0.00	0.00	6,429.5	-845.3	-1,801.8	1,354,923.57	3,137,686.96	40.306613	-105.006308

Casing Points					
Measured Depth (ft)	Vertical Depth (ft)	Name	Casing Diameter (")	Hole Diameter (")	
7,002.6	6,513.5	7"	7	7-1/2	

Formations					
Measured Depth (ft)	Vertical Depth (ft)	Name	Lithology	Dip (°)	Dip Direction (°)
6,324.6	6,220.5	A Chalk		0.00	
6,353.5	6,244.5	A Marl		0.00	
6,448.0	6,317.5	B Chalk		0.00	
6,464.8	6,329.5	B Marl		0.00	
6,537.2	6,377.5	C Chalk		0.00	
6,602.8	6,415.5	C Marl		0.00	
6,802.1	6,494.5	Ft. Hayes		0.00	
6,860.4	6,506.5	Codell		0.00	

Plan Annotations				
Measured Depth (ft)	Vertical Depth (ft)	Local Coordinates		Comment
		+N/-S (ft)	+E/-W (ft)	
400.0	400.0	0.0	0.0	KOP - Start Build 1.50
4,476.5	4,397.5	-82.1	22.8	Start Drop -1.50
5,963.1	5,878.1	-743.8	206.1	KOP #2 - Start Build 9.00
8,359.9	6,429.5	-825.9	228.9	Start DLS 2.00 TFO 0.06
11,107.5	6,170.5	-825.9	228.9	TD at 11107.5



Synergy Resources

SEC.16-T4N-R68W

SRC Cannon Pad Sec.16-T4N-R68W

SRC Cannon 14-16CHZ

Wellbore #1

Plan #4 (1-23-15)

Anticollision Report

23 January, 2015

Company:	Synergy Resources	Local Co-ordinate Reference:	Well SRC Cannon 14-16CHZ
Project:	SEC.16-T4N-R68W	TVD Reference:	WELL @ 4942.5ft (Ensign Rig #131 -RKB - 13.5')
Reference Site:	SRC Cannon Pad Sec.16-T4N-R68W	MD Reference:	WELL @ 4942.5ft (Ensign Rig #131 -RKB - 13.5')
Site Error:	0.0ft	North Reference:	True
Reference Well:	SRC Cannon 14-16CHZ	Survey Calculation Method:	Minimum Curvature
Well Error:	0.0ft	Output errors are at	2.00 sigma
Reference Wellbore	Wellbore #1	Database:	Landmark
Reference Design:	Plan #4 (1-23-15)	Offset TVD Reference:	Offset Datum

Offset Design		Existing Wells Pad Sec.16-T4N-R68W - Zoller #1 (P&A) - Wellbore #1 - Wellbore #1											Offset Site Error:	0.0 ft
Survey Program: 6416-UNKNOWN													Offset Well Error:	0.0 ft
Reference		Offset		Semi Major Axis			Distance							Warning
Measured Depth (ft)	Vertical Depth (ft)	Measured Depth (ft)	Vertical Depth (ft)	Reference (ft)	Offset (ft)	Highside Toolface (°)	Offset Wellbore Centre +N/-S (ft)	Offset Wellbore Centre +E/-W (ft)	Between Centres (ft)	Between Ellipses (ft)	Minimum Separation (ft)	Separation Factor		
9,300.0	6,341.9	6,335.4	6,335.4	80.4	126.7	95.56	-477.0	-3,132.1	545.7	339.7	206.03	2.649		
9,400.0	6,332.4	6,325.9	6,325.9	83.1	126.5	94.15	-477.0	-3,132.1	479.5	270.6	208.92	2.295		
9,500.0	6,322.9	6,316.4	6,316.4	85.9	126.3	92.73	-477.0	-3,132.1	426.4	214.7	211.71	2.014		
9,600.0	6,313.5	6,307.0	6,307.0	88.6	126.1	91.31	-477.0	-3,132.1	391.9	177.5	214.38	1.828		
9,692.5	6,304.7	6,298.2	6,298.2	91.1	126.0	90.00	-477.0	-3,132.1	380.9	164.2	216.75	1.757 CC		
9,700.0	6,304.0	6,297.5	6,297.5	91.3	125.9	89.89	-477.0	-3,132.1	381.0	164.1	216.93	1.756 ES, SF		
9,800.0	6,294.5	6,288.0	6,288.0	94.1	125.8	88.47	-477.0	-3,132.1	395.7	176.3	219.36	1.804		
9,900.0	6,285.0	6,278.5	6,278.5	96.8	125.6	87.06	-477.0	-3,132.1	433.3	211.7	221.66	1.955		
10,000.0	6,275.5	6,269.0	6,269.0	99.6	125.4	85.64	-477.0	-3,132.1	488.7	264.9	223.82	2.183		
10,100.0	6,266.0	6,259.5	6,259.5	102.3	125.2	84.23	-477.0	-3,132.1	556.5	330.6	225.85	2.464		

Company:	Synergy Resources	Local Co-ordinate Reference:	Well SRC Cannon 14-16CHZ
Project:	SEC.16-T4N-R68W	TVD Reference:	WELL @ 4942.5ft (Ensign Rig #131 -RKB - 13.5')
Reference Site:	SRC Cannon Pad Sec.16-T4N-R68W	MD Reference:	WELL @ 4942.5ft (Ensign Rig #131 -RKB - 13.5')
Site Error:	0.0ft	North Reference:	True
Reference Well:	SRC Cannon 14-16CHZ	Survey Calculation Method:	Minimum Curvature
Well Error:	0.0ft	Output errors are at	2.00 sigma
Reference Wellbore	Wellbore #1	Database:	Landmark
Reference Design:	Plan #4 (1-23-15)	Offset TVD Reference:	Offset Datum

Offset Design													Offset Site Error:	0.0 ft
SRC Cannon Pad Sec.16-T4N-R68W - SRC Cannon 13-16CHZ - Wellbore #1 - Plan #2 (1-12-15)													Offset Well Error:	0.0 ft
Survey Program: 0-MWD														
Reference		Offset		Semi Major Axis			Distance							
Measured Depth (ft)	Vertical Depth (ft)	Measured Depth (ft)	Vertical Depth (ft)	Reference (ft)	Offset (ft)	Highside Toolface (°)	Offset Wellbore Centre +N/-S (ft)	+E/-W (ft)	Between Centres (ft)	Between Ellipses (ft)	Minimum Separation (ft)	Separation Factor	Warning	
0.0	0.0	3.0	3.0	0.0	0.0	0.00	120.0	0.0	120.0	120.0	0.00	N/A		
100.0	100.0	103.0	103.0	0.1	0.1	0.00	120.0	0.0	120.0	119.8	0.23	518.463		
200.0	200.0	203.0	203.0	0.3	0.3	0.00	120.0	0.0	120.0	119.3	0.68	176.243		
300.0	300.0	303.0	303.0	0.6	0.6	0.00	120.0	0.0	120.0	118.9	1.13	106.166		
400.0	400.0	403.0	403.0	0.8	0.8	0.00	120.0	0.0	120.0	118.4	1.58	75.963 CC, ES		
500.0	500.0	503.0	503.0	1.0	1.0	-164.67	120.0	0.0	121.3	119.3	2.01	60.480		
600.0	599.9	602.9	602.9	1.2	1.2	-165.13	120.0	0.0	125.1	122.7	2.42	51.692		
700.0	699.7	702.7	702.7	1.4	1.5	-165.84	120.0	0.0	131.4	128.6	2.85	46.176		
800.0	799.3	802.2	802.2	1.6	1.7	-166.72	120.0	0.0	140.3	137.0	3.28	42.780		
900.0	898.6	897.9	897.9	1.9	1.9	-167.51	121.2	0.3	153.0	149.3	3.71	41.188		
1,000.0	997.5	992.5	992.4	2.2	2.1	-168.06	124.7	1.3	170.6	166.4	4.16	41.024 SF		
1,100.0	1,096.1	1,085.8	1,085.5	2.5	2.3	-168.39	130.3	2.9	192.9	188.3	4.60	41.903		
1,200.0	1,194.2	1,177.4	1,176.8	2.9	2.5	-168.55	138.0	5.1	220.0	215.0	5.05	43.529		
1,300.0	1,291.9	1,267.4	1,266.2	3.3	2.8	-168.62	147.5	7.8	250.6	245.1	5.51	45.474		
1,400.0	1,389.7	1,356.1	1,354.1	3.7	3.0	-168.53	158.9	11.0	283.4	277.4	5.97	47.429		
1,500.0	1,487.5	1,443.4	1,440.4	4.2	3.3	-168.32	172.0	14.7	318.1	311.7	6.44	49.389		
1,600.0	1,585.2	1,529.3	1,524.9	4.6	3.5	-168.03	186.8	18.9	354.9	348.0	6.91	51.345		
1,700.0	1,683.0	1,613.7	1,607.5	5.1	3.8	-167.70	203.1	23.5	393.6	386.2	7.39	53.267		
1,800.0	1,780.8	1,704.7	1,696.5	5.5	4.1	-167.36	221.8	28.8	433.4	425.5	7.88	55.022		
1,900.0	1,878.5	1,796.4	1,786.0	6.0	4.5	-167.06	240.6	34.2	473.2	464.9	8.37	56.542		
2,000.0	1,976.3	1,888.1	1,875.6	6.4	4.9	-166.81	259.4	39.5	513.1	504.2	8.87	57.865		
2,100.0	2,074.1	1,979.8	1,965.2	6.9	5.2	-166.60	278.2	44.8	553.0	543.6	9.37	59.028		
2,200.0	2,171.9	2,071.5	2,054.8	7.3	5.6	-166.42	297.0	50.2	592.8	583.0	9.87	60.052		

Company:	Synergy Resources	Local Co-ordinate Reference:	Well SRC Cannon 14-16CHZ
Project:	SEC.16-T4N-R68W	TVD Reference:	WELL @ 4942.5ft (Ensign Rig #131 -RKB - 13.5')
Reference Site:	SRC Cannon Pad Sec.16-T4N-R68W	MD Reference:	WELL @ 4942.5ft (Ensign Rig #131 -RKB - 13.5')
Site Error:	0.0ft	North Reference:	True
Reference Well:	SRC Cannon 14-16CHZ	Survey Calculation Method:	Minimum Curvature
Well Error:	0.0ft	Output errors are at	2.00 sigma
Reference Wellbore	Wellbore #1	Database:	Landmark
Reference Design:	Plan #4 (1-23-15)	Offset TVD Reference:	Offset Datum

Offset Design		SRC Cannon Pad Sec.16-T4N-R68W - SRC Cannon 13-16NHZ - Wellbore #1 - Plan #2 (1-12-15)											Offset Site Error:		0.0 ft
Survey Program: 0-MWD													Offset Well Error:		0.0 ft
Reference		Offset		Semi Major Axis		Distance								Warning	
Measured Depth (ft)	Vertical Depth (ft)	Measured Depth (ft)	Vertical Depth (ft)	Reference (ft)	Offset (ft)	Highside Toolface (°)	Offset Wellbore Centre		Between Centres (ft)	Between Ellipses (ft)	Minimum Separation (ft)	Separation Factor			
							+N/-S (ft)	+E/-W (ft)							
0.0	0.0	4.0	4.0	0.0	0.0	0.00	135.0	0.0	135.0	135.0	0.00	N/A			
100.0	100.0	104.0	104.0	0.1	0.1	0.00	135.0	0.0	135.0	134.8	0.23	577.612			
200.0	200.0	204.0	204.0	0.3	0.3	0.00	135.0	0.0	135.0	134.3	0.68	197.604			
300.0	300.0	304.0	304.0	0.6	0.6	0.00	135.0	0.0	135.0	133.9	1.13	119.190			
365.3	365.3	369.3	369.3	0.7	0.7	0.00	135.0	0.0	135.0	133.6	1.43	94.667 CC			
400.0	400.0	403.9	403.9	0.8	0.8	0.00	135.0	0.0	135.0	133.4	1.58	85.346 ES			
500.0	500.0	500.0	500.0	1.0	1.0	-164.52	136.3	0.3	137.6	135.6	2.00	68.778			
600.0	599.9	596.7	596.6	1.2	1.2	-164.56	140.0	1.1	145.2	142.8	2.42	60.056			
700.0	699.7	692.2	691.9	1.4	1.5	-164.62	145.9	2.5	157.7	154.9	2.85	55.378			
800.0	799.3	786.7	786.0	1.6	1.7	-164.69	154.1	4.3	175.1	171.8	3.29	53.276			
900.0	898.6	879.8	878.5	1.9	1.9	-164.75	164.4	6.7	197.3	193.6	3.73	52.875 SF			
1,000.0	997.5	971.2	969.0	2.2	2.2	-164.79	176.6	9.4	224.3	220.1	4.18	53.632			
1,100.0	1,096.1	1,060.6	1,057.3	2.5	2.5	-164.82	190.6	12.6	255.9	251.2	4.64	55.195			
1,200.0	1,194.2	1,147.8	1,143.0	2.9	2.8	-164.82	206.2	16.1	291.9	286.8	5.09	57.321			
1,300.0	1,291.9	1,232.9	1,226.3	3.3	3.1	-164.91	223.2	20.0	331.4	325.8	5.56	59.633			
1,400.0	1,389.7	1,316.5	1,307.7	3.7	3.4	-164.91	241.7	24.2	372.8	366.8	6.03	61.854			
1,500.0	1,487.5	1,400.8	1,389.3	4.2	3.8	-164.85	262.1	28.8	416.2	409.7	6.51	63.945			
1,600.0	1,585.2	1,487.8	1,473.4	4.6	4.2	-164.76	284.1	33.8	460.5	453.5	7.00	65.825			
1,700.0	1,683.0	1,577.4	1,560.0	5.1	4.7	-164.69	306.8	39.0	504.8	497.3	7.49	67.351			
1,800.0	1,780.8	1,667.0	1,646.5	5.5	5.1	-164.63	329.4	44.1	549.1	541.1	7.99	68.723			
1,900.0	1,878.5	1,756.7	1,733.1	6.0	5.6	-164.58	352.0	49.2	593.4	584.9	8.49	69.871			

Company:	Synergy Resources	Local Co-ordinate Reference:	Well SRC Cannon 14-16CHZ
Project:	SEC.16-T4N-R68W	TVD Reference:	WELL @ 4942.5ft (Ensign Rig #131 -RKB -13.5')
Reference Site:	SRC Cannon Pad Sec.16-T4N-R68W	MD Reference:	WELL @ 4942.5ft (Ensign Rig #131 -RKB -13.5')
Site Error:	0.0ft	North Reference:	True
Reference Well:	SRC Cannon 14-16CHZ	Survey Calculation Method:	Minimum Curvature
Well Error:	0.0ft	Output errors are at	2.00 sigma
Reference Wellbore	Wellbore #1	Database:	Landmark
Reference Design:	Plan #4 (1-23-15)	Offset TVD Reference:	Offset Datum

Offset Design													Offset Site Error:	0.0ft
Survey Program: 0-MWD													Offset Well Error:	0.0ft
Reference	Offset	Semi Major Axis			Distance									Warning
Measured Depth (ft)	Vertical Depth (ft)	Measured Depth (ft)	Vertical Depth (ft)	Reference (ft)	Offset (ft)	Highside Toolface (°)	Offset Wellbore Centre +N/-S (ft)	+E/-W (ft)	Between Centres (ft)	Between Ellipses (ft)	Minimum Separation (ft)	Separation Factor		
0.0	0.0	0.0	0.0	0.0	0.0	0.00	15.0	0.0	15.0	15.0	0.00	N/A		
100.0	100.0	100.0	100.0	0.1	0.1	0.00	15.0	0.0	15.0	14.8	0.22	66.883		
200.0	200.0	200.0	200.0	0.3	0.3	0.00	15.0	0.0	15.0	14.4	0.67	22.294		
300.0	300.0	300.0	300.0	0.6	0.6	0.00	15.0	0.0	15.0	13.9	1.12	13.377		
400.0	400.0	400.0	400.0	0.8	0.8	0.00	15.0	0.0	15.0	13.5	1.57	9.555 CC, ES		
500.0	500.0	500.0	500.0	1.0	1.0	-165.73	15.0	0.0	16.3	14.3	2.00	8.154		
600.0	599.9	599.9	599.9	1.2	1.2	-168.48	15.0	0.0	20.1	17.7	2.41	8.341		
700.0	699.7	699.7	699.7	1.4	1.5	-171.28	15.0	0.0	26.6	23.7	2.84	9.358		
800.0	799.3	799.3	799.3	1.6	1.7	-173.50	15.0	0.0	35.6	32.4	3.27	10.894		
900.0	898.6	898.8	899.8	1.9	1.9	-174.84	13.8	0.5	46.1	42.4	3.68	12.514		
1,000.0	997.5	1,000.6	1,000.5	2.2	2.1	-175.46	10.1	1.8	56.5	52.4	4.07	13.875		
1,100.0	1,096.1	1,101.6	1,101.3	2.5	2.3	-175.69	3.9	4.1	67.0	62.5	4.48	14.947		
1,200.0	1,194.2	1,203.0	1,202.2	2.9	2.5	-175.70	-4.9	7.3	77.4	72.5	4.90	15.792		
1,300.0	1,291.9	1,304.7	1,303.2	3.3	2.7	-175.51	-16.2	11.5	86.8	81.4	5.35	16.218		
1,400.0	1,389.7	1,406.8	1,404.3	3.7	3.0	-175.08	-30.1	16.6	93.5	87.7	5.82	16.076		
1,500.0	1,487.5	1,508.9	1,504.8	4.2	3.3	-174.44	-46.5	22.7	97.7	91.4	6.30	15.505		
1,600.0	1,585.2	1,608.8	1,603.1	4.6	3.6	-173.77	-63.4	28.9	100.9	94.1	6.79	14.857		
1,700.0	1,683.0	1,708.8	1,701.4	5.1	4.0	-173.13	-80.3	35.2	104.1	96.8	7.29	14.278		
1,800.0	1,780.8	1,808.7	1,799.7	5.5	4.3	-172.53	-97.3	41.4	107.3	99.5	7.80	13.766		
1,900.0	1,878.5	1,908.6	1,898.0	6.0	4.7	-171.97	-114.2	47.7	110.6	102.3	8.31	13.302		
2,000.0	1,976.3	2,008.6	1,996.3	6.4	5.1	-171.44	-131.1	53.9	113.8	105.0	8.83	12.885		
2,100.0	2,074.1	2,108.5	2,094.6	6.9	5.5	-170.94	-148.1	60.2	117.1	107.7	9.36	12.508		
2,200.0	2,171.9	2,208.5	2,192.9	7.3	5.9	-170.47	-165.0	66.4	120.4	110.5	9.89	12.166		
2,300.0	2,269.6	2,308.4	2,291.2	7.8	6.2	-170.02	-181.9	72.6	123.6	113.2	10.43	11.854		
2,400.0	2,367.4	2,408.4	2,389.5	8.2	6.6	-169.59	-198.8	78.9	126.9	116.0	10.97	11.568		
2,500.0	2,465.2	2,508.3	2,487.8	8.7	7.0	-169.19	-215.8	85.1	130.2	118.7	11.52	11.306		
2,600.0	2,562.9	2,608.2	2,586.1	9.2	7.4	-168.80	-232.7	91.4	133.5	121.5	12.07	11.065		
2,700.0	2,660.7	2,708.2	2,684.4	9.6	7.8	-168.44	-249.6	97.6	136.8	124.2	12.62	10.843		
2,800.0	2,758.5	2,808.1	2,782.7	10.1	8.2	-168.09	-266.6	103.9	140.1	127.0	13.18	10.637		
2,900.0	2,856.2	2,908.1	2,881.0	10.5	8.6	-167.76	-283.5	110.1	143.5	129.7	13.73	10.445		
3,000.0	2,954.0	3,008.0	2,979.3	11.0	9.0	-167.44	-300.4	116.4	146.8	132.5	14.30	10.268		
3,100.0	3,051.8	3,107.9	3,077.6	11.5	9.5	-167.14	-317.3	122.6	150.1	135.3	14.86	10.102		
3,200.0	3,149.5	3,207.9	3,175.9	11.9	9.9	-166.85	-334.3	128.9	153.4	138.0	15.43	9.947		
3,300.0	3,247.3	3,307.8	3,274.2	12.4	10.3	-166.57	-351.2	135.1	156.8	140.8	16.00	9.801		
3,400.0	3,345.1	3,407.8	3,372.5	12.8	10.7	-166.31	-368.1	141.3	160.1	143.5	16.57	9.665		
3,500.0	3,442.8	3,507.7	3,470.8	13.3	11.1	-166.05	-385.1	147.6	163.5	146.3	17.14	9.537		
3,600.0	3,540.6	3,607.7	3,569.1	13.8	11.5	-165.81	-402.0	153.8	166.8	149.1	17.71	9.416		
3,700.0	3,638.4	3,707.6	3,667.4	14.2	11.9	-165.57	-418.9	160.1	170.1	151.9	18.29	9.302		
3,800.0	3,736.1	3,807.5	3,765.7	14.7	12.3	-165.34	-435.8	166.3	173.5	154.6	18.87	9.195		
3,900.0	3,833.9	3,907.5	3,864.0	15.1	12.7	-165.13	-452.8	172.6	176.8	157.4	19.45	9.093		
4,000.0	3,931.7	4,007.4	3,962.3	15.6	13.1	-164.92	-469.7	178.8	180.2	160.2	20.03	8.997		
4,100.0	4,029.4	4,107.4	4,060.6	16.1	13.5	-164.72	-486.6	185.1	183.6	162.9	20.61	8.905		
4,200.0	4,127.2	4,207.3	4,158.9	16.5	14.0	-164.52	-503.6	191.3	186.9	165.7	21.20	8.818		
4,300.0	4,225.0	4,307.2	4,257.2	17.0	14.4	-164.33	-520.5	197.5	190.3	168.5	21.78	8.736		
4,400.0	4,322.8	4,407.2	4,355.5	17.5	14.8	-164.15	-537.4	203.8	193.6	171.3	22.37	8.657		
4,500.0	4,420.5	4,505.1	4,451.8	17.9	15.2	-164.00	-553.8	209.8	197.2	174.2	22.93	8.597		
4,600.0	4,518.7	4,600.0	4,545.6	18.2	15.4	-163.94	-567.8	215.0	200.9	177.5	23.40	8.584		
4,700.0	4,617.3	4,695.6	4,640.3	18.5	15.7	-163.92	-579.7	219.4	204.4	180.6	23.84	8.576		
4,800.0	4,716.3	4,790.7	4,734.9	18.7	15.9	-163.94	-589.4	222.9	207.8	183.5	24.23	8.574		
4,900.0	4,815.7	4,885.8	4,829.6	19.0	16.1	-164.00	-596.8	225.7	210.9	186.3	24.59	8.577		
5,000.0	4,915.3	4,980.8	4,924.5	19.2	16.2	-164.10	-602.0	227.6	213.9	189.0	24.91	8.586		

CC - Min centre to center distance or convergent point, SF - min separation factor, ES - min ellipse separation

Company:	Synergy Resources	Local Co-ordinate Reference:	Well SRC Cannon 14-16CHZ
Project:	SEC.16-T4N-R68W	TVD Reference:	WELL @ 4942.5ft (Ensign Rig #131 -RKB -13.5')
Reference Site:	SRC Cannon Pad Sec.16-T4N-R68W	MD Reference:	WELL @ 4942.5ft (Ensign Rig #131 -RKB -13.5')
Site Error:	0.0ft	North Reference:	True
Reference Well:	SRC Cannon 14-16CHZ	Survey Calculation Method:	Minimum Curvature
Well Error:	0.0ft	Output errors are at	2.00 sigma
Reference Wellbore	Wellbore #1	Database:	Landmark
Reference Design:	Plan #4 (1-23-15)	Offset TVD Reference:	Offset Datum

Offset Design SRC Cannon Pad Sec.16-T4N-R68W - SRC Cannon 14-16NHZ - Wellbore #1 - Plan #4 (1-23-15)													Offset Site Error:	0.0ft
Survey Program: 0-MWD													Offset Well Error:	0.0ft
Reference		Offset		Semi Major Axis			Distance							Warning
Measured Depth (ft)	Vertical Depth (ft)	Measured Depth (ft)	Vertical Depth (ft)	Reference (ft)	Offset (ft)	Highside Toolface (°)	Offset Wellbore Centre +N/-S (ft)	+E/-W (ft)	Between Centres (ft)	Between Ellipses (ft)	Minimum Separation (ft)	Separation Factor		
5,100.0	5,015.1	5,075.8	5,019.4	19.3	16.4	-164.24	-605.0	228.7	216.7	191.5	25.20	8.599		
5,200.0	5,115.0	5,171.4	5,115.0	19.5	16.5	-164.41	-605.8	229.0	219.2	193.8	25.45	8.613		
5,300.0	5,215.0	5,271.4	5,215.0	19.6	16.7	0.03	-605.8	229.0	220.1	184.8	35.33	6.231		
5,400.0	5,315.0	5,371.4	5,315.0	19.7	16.8	0.03	-605.8	229.0	220.1	184.6	35.56	6.190		
5,500.0	5,415.0	5,471.4	5,415.0	19.8	16.9	0.03	-605.8	229.0	220.1	184.3	35.80	6.149		
5,600.0	5,515.0	5,571.4	5,515.0	19.9	17.0	0.03	-605.8	229.0	220.1	184.1	36.04	6.108		
5,700.0	5,615.0	5,671.4	5,615.0	20.0	17.2	0.03	-605.8	229.0	220.1	183.8	36.29	6.066		
5,800.0	5,715.0	5,771.4	5,715.0	20.1	17.3	0.03	-605.8	229.0	220.1	183.6	36.54	6.025		
5,900.0	5,815.0	5,871.5	5,815.0	20.3	17.4	-0.53	-605.8	226.9	220.1	183.3	36.84	5.975		
5,900.8	5,815.8	5,872.3	5,815.8	20.3	17.4	90.00	-605.8	226.8	220.1	192.5	27.67	7.956		
6,000.0	5,915.0	5,969.4	5,911.6	20.4	17.5	86.23	-605.9	211.4	220.6	193.1	27.52	8.016		
6,100.0	6,014.0	6,064.3	6,001.9	20.5	17.6	81.83	-606.2	182.4	222.4	195.1	27.33	8.139		
6,200.0	6,109.6	6,157.1	6,085.1	20.5	17.6	77.74	-606.6	141.5	225.4	198.1	27.25	8.270		
6,300.0	6,199.5	6,250.0	6,161.5	20.5	17.6	73.98	-607.1	88.8	229.1	201.8	27.30	8.394		
6,400.0	6,281.5	6,337.2	6,225.5	20.5	17.6	70.84	-607.7	29.7	233.2	205.8	27.47	8.491		
6,500.0	6,353.6	6,425.0	6,281.3	20.5	17.6	68.13	-608.3	-38.1	237.4	209.6	27.81	8.536		
6,600.0	6,414.0	6,511.7	6,326.7	20.6	17.7	65.95	-609.0	-111.9	241.2	212.8	28.38	8.498		
6,700.0	6,461.2	6,600.0	6,362.1	20.7	17.9	64.25	-609.8	-192.6	244.4	215.0	29.38	8.321		
6,800.0	6,494.0	6,682.9	6,384.9	20.9	18.4	63.14	-610.6	-272.2	246.8	216.0	30.82	8.008		
6,900.0	6,511.6	6,767.7	6,397.4	21.5	19.5	62.50	-611.4	-356.1	248.2	215.3	32.81	7.564		
7,000.0	6,513.7	6,852.4	6,398.6	22.7	21.0	62.37	-612.2	-440.7	248.4	213.1	35.31	7.036		
7,100.0	6,507.5	6,951.6	6,392.9	24.3	23.0	62.45	-613.1	-539.7	248.3	209.4	38.90	6.382		
7,200.0	6,501.3	7,051.6	6,387.0	26.3	25.1	62.52	-614.1	-639.6	248.1	205.3	42.79	5.798		
7,300.0	6,495.1	7,151.6	6,381.2	28.4	27.4	62.59	-615.0	-739.4	247.9	201.0	46.90	5.286		
7,400.0	6,488.9	7,251.6	6,375.3	30.7	29.8	62.66	-616.0	-839.2	247.8	196.6	51.19	4.840		
7,500.0	6,482.7	7,351.6	6,369.5	33.0	32.2	62.73	-617.0	-939.0	247.6	192.0	55.61	4.453		
7,600.0	6,476.6	7,451.6	6,363.6	35.5	34.7	62.80	-617.9	-1,038.9	247.5	187.3	60.13	4.115		
7,700.0	6,470.4	7,551.6	6,357.8	37.9	37.2	62.87	-618.9	-1,138.7	247.3	182.5	64.74	3.819		
7,800.0	6,464.2	7,651.6	6,352.0	40.5	39.8	62.95	-619.8	-1,238.5	247.1	177.7	69.42	3.560		
7,900.0	6,458.0	7,751.6	6,346.1	43.0	42.3	63.02	-620.8	-1,338.3	247.0	172.8	74.16	3.330		
8,000.0	6,451.8	7,851.6	6,340.3	45.6	45.0	63.09	-621.7	-1,438.2	246.8	167.9	78.95	3.126		
8,100.0	6,445.6	7,951.6	6,334.4	48.2	47.6	63.16	-622.7	-1,538.0	246.6	162.9	83.77	2.944		
8,200.0	6,439.4	8,051.6	6,328.6	50.8	50.2	63.23	-623.6	-1,637.8	246.5	157.9	88.63	2.781		
8,300.0	6,433.2	8,151.6	6,322.7	53.5	52.9	63.31	-624.6	-1,737.6	246.3	152.8	93.52	2.634		
8,352.5	6,429.8	8,203.6	6,319.7	54.9	54.3	63.38	-625.1	-1,789.5	246.2	150.1	96.08	2.562		
8,400.0	6,426.7	8,249.3	6,316.4	56.1	55.5	63.30	-625.5	-1,835.1	246.3	148.1	98.24	2.507		
8,500.0	6,417.8	8,347.5	6,307.4	58.8	58.2	63.27	-626.5	-1,932.9	246.4	143.5	102.92	2.394		
8,600.0	6,408.3	8,447.5	6,297.9	61.5	60.9	63.26	-627.4	-2,032.5	246.4	138.6	107.78	2.286		
8,700.0	6,398.8	8,547.5	6,288.4	64.2	63.6	63.25	-628.4	-2,132.0	246.4	133.8	112.65	2.188		
8,800.0	6,389.3	8,647.5	6,278.9	66.9	66.3	63.25	-629.3	-2,231.5	246.4	128.9	117.54	2.097		
8,900.0	6,379.8	8,747.5	6,269.4	69.6	69.0	63.24	-630.3	-2,331.1	246.5	124.0	122.43	2.013		
9,000.0	6,370.4	8,847.5	6,259.9	72.3	71.7	63.23	-631.2	-2,430.6	246.5	119.1	127.34	1.936		
9,100.0	6,360.9	8,947.5	6,250.3	75.0	74.4	63.22	-632.2	-2,530.2	246.5	114.2	132.25	1.864		
9,200.0	6,351.4	9,047.5	6,240.8	77.7	77.1	63.22	-633.1	-2,629.7	246.5	109.3	137.17	1.797		
9,300.0	6,341.9	9,147.5	6,231.3	80.4	79.9	63.21	-634.1	-2,729.2	246.5	104.4	142.10	1.735		
9,400.0	6,332.4	9,247.5	6,221.8	83.1	82.6	63.20	-635.0	-2,828.8	246.5	99.5	147.03	1.677		
9,500.0	6,322.9	9,347.5	6,212.3	85.9	85.3	63.19	-636.0	-2,928.3	246.5	94.6	151.97	1.622		
9,600.0	6,313.5	9,447.5	6,202.7	88.6	88.1	63.19	-636.9	-3,027.9	246.6	89.7	156.91	1.571		
9,700.0	6,304.0	9,547.5	6,193.2	91.3	90.8	63.18	-637.9	-3,127.4	246.6	84.7	161.86	1.523		
9,800.0	6,294.5	9,647.5	6,183.7	94.1	93.6	63.17	-638.8	-3,227.0	246.6	79.8	166.81	1.478 Level 3		

CC - Min centre to center distance or convergent point, SF - min separation factor, ES - min ellipse separation

Company:	Synergy Resources	Local Co-ordinate Reference:	Well SRC Cannon 14-16CHZ
Project:	SEC.16-T4N-R68W	TVD Reference:	WELL @ 4942.5ft (Ensign Rig #131 -RKB - 13.5')
Reference Site:	SRC Cannon Pad Sec.16-T4N-R68W	MD Reference:	WELL @ 4942.5ft (Ensign Rig #131 -RKB - 13.5')
Site Error:	0.0ft	North Reference:	True
Reference Well:	SRC Cannon 14-16CHZ	Survey Calculation Method:	Minimum Curvature
Well Error:	0.0ft	Output errors are at	2.00 sigma
Reference Wellbore	Wellbore #1	Database:	Landmark
Reference Design:	Plan #4 (1-23-15)	Offset TVD Reference:	Offset Datum

Offset Design		SRC Cannon Pad Sec.16-T4N-R68W - SRC Cannon 14-16NHZ - Wellbore #1 - Plan #4 (1-23-15)										Offset Site Error:		0.0 ft
Survey Program:		0-MWD										Offset Well Error:		0.0 ft
Reference		Offset		Semi Major Axis			Distance							Warning
Measured Depth	Vertical Depth	Measured Depth	Vertical Depth	Reference	Offset	Highside Toolface	Offset Wellbore Centre		Between Centres	Between Ellipses	Minimum Separation	Separation Factor		
(ft)	(ft)	(ft)	(ft)	(ft)	(ft)	(°)	+N/-S (ft)	+E/-W (ft)	(ft)	(ft)	(ft)			
9,900.0	6,285.0	9,747.5	6,174.2	96.8	96.3	63.16	-639.8	-3,326.5	246.6	74.8	171.76	1.436	Level 3	
10,000.0	6,275.5	9,847.5	6,164.7	99.6	99.1	63.16	-640.7	-3,426.0	246.6	69.9	176.71	1.396	Level 3	
10,100.0	6,266.0	9,947.5	6,155.2	102.3	101.8	63.15	-641.7	-3,525.6	246.6	65.0	181.67	1.358	Level 3	
10,200.0	6,256.6	10,047.5	6,145.6	105.1	104.6	63.14	-642.6	-3,625.1	246.6	60.0	186.63	1.322	Level 3	
10,300.0	6,247.1	10,147.5	6,136.1	107.8	107.3	63.13	-643.6	-3,724.7	246.7	55.1	191.60	1.287	Level 3	
10,400.0	6,237.6	10,247.5	6,126.6	110.6	110.1	63.13	-644.5	-3,824.2	246.7	50.1	196.56	1.255	Level 3	
10,500.0	6,228.1	10,347.5	6,117.1	113.3	112.9	63.12	-645.5	-3,923.7	246.7	45.2	201.53	1.224	Level 2	
10,600.0	6,218.6	10,447.5	6,107.6	116.1	115.6	63.11	-646.4	-4,023.3	246.7	40.2	206.49	1.195	Level 2	
10,700.0	6,209.1	10,547.5	6,098.0	118.8	118.4	63.10	-647.4	-4,122.8	246.7	35.3	211.46	1.167	Level 2	
10,800.0	6,199.7	10,647.5	6,088.5	121.6	121.2	63.10	-648.3	-4,222.4	246.7	30.3	216.43	1.140	Level 2	
10,900.0	6,190.2	10,747.5	6,079.0	124.4	123.9	63.09	-649.2	-4,321.9	246.7	25.3	221.40	1.114	Level 2	
11,000.0	6,180.7	10,847.5	6,069.5	127.1	126.7	63.08	-650.2	-4,421.5	246.8	20.4	226.38	1.090	Level 2	
11,100.0	6,171.2	10,947.5	6,060.0	128.9	129.5	63.08	-651.1	-4,521.0	246.8	16.3	230.46	1.071	Level 2	
11,107.5	6,170.5	10,955.0	6,059.3	129.1	129.7	63.07	-651.2	-4,528.4	246.8	16.0	230.77	1.069	Level 2, SF	

Company:	Synergy Resources	Local Co-ordinate Reference:	Well SRC Cannon 14-16CHZ
Project:	SEC.16-T4N-R68W	TVD Reference:	WELL @ 4942.5ft (Ensign Rig #131 -RKB -13.5')
Reference Site:	SRC Cannon Pad Sec.16-T4N-R68W	MD Reference:	WELL @ 4942.5ft (Ensign Rig #131 -RKB -13.5')
Site Error:	0.0ft	North Reference:	True
Reference Well:	SRC Cannon 14-16CHZ	Survey Calculation Method:	Minimum Curvature
Well Error:	0.0ft	Output errors are at	2.00 sigma
Reference Wellbore	Wellbore #1	Database:	Landmark
Reference Design:	Plan #4 (1-23-15)	Offset TVD Reference:	Offset Datum

Offset Design													Offset Site Error:	0.0ft
Survey Program: 0-MWD													Offset Well Error:	0.0ft
Reference		Offset		Semi Major Axis			Distance							Warning
Measured Depth (ft)	Vertical Depth (ft)	Measured Depth (ft)	Vertical Depth (ft)	Reference (ft)	Offset (ft)	Highside Toolface (°)	Offset Wellbore Centre +N/-S (ft)	+E/-W (ft)	Between Centres (ft)	Between Ellipses (ft)	Minimum Separation (ft)	Separation Factor		
0.0	0.0	1.0	1.0	0.0	0.0	0.00	30.3	0.0	30.3	30.3	0.00	N/A		
100.0	100.0	101.0	101.0	0.1	0.1	0.00	30.3	0.0	30.3	30.0	0.23	133.305		
200.0	200.0	201.0	201.0	0.3	0.3	0.00	30.3	0.0	30.3	29.6	0.68	44.730		
300.0	300.0	301.0	301.0	0.6	0.6	0.00	30.3	0.0	30.3	29.1	1.13	26.874		
400.0	400.0	401.0	401.0	0.8	0.8	0.00	30.3	0.0	30.3	28.7	1.58	19.207 CC, ES		
500.0	500.0	501.0	501.0	1.0	1.0	-165.14	30.3	0.0	31.5	29.5	2.00	15.755		
600.0	599.9	600.9	600.9	1.2	1.2	-166.76	30.3	0.0	35.3	32.9	2.42	14.630		
700.0	699.7	700.7	700.7	1.4	1.5	-168.80	30.3	0.0	41.7	38.9	2.84	14.687		
800.0	799.3	800.3	800.3	1.6	1.7	-170.78	30.3	0.0	50.7	47.5	3.27	15.495		
900.0	898.6	899.6	899.6	1.9	1.9	-172.49	30.3	0.0	62.4	58.7	3.71	16.802		
1,000.0	997.5	998.5	998.5	2.2	2.1	-173.87	30.3	0.0	76.6	72.5	4.15	18.450		
1,100.0	1,096.1	1,099.4	1,099.4	2.5	2.3	-174.72	29.1	0.6	92.3	87.7	4.57	20.184		
1,200.0	1,194.2	1,200.6	1,200.6	2.9	2.5	-175.00	25.6	2.5	108.0	103.1	4.97	21.725		
1,300.0	1,291.9	1,302.5	1,302.2	3.3	2.7	-174.89	19.8	5.8	122.8	117.4	5.40	22.745		
1,400.0	1,389.7	1,405.0	1,404.2	3.7	2.9	-174.43	11.5	10.3	135.1	129.2	5.85	23.110		
1,500.0	1,487.5	1,508.1	1,506.6	4.2	3.2	-173.69	0.7	16.3	144.8	138.5	6.31	22.960		
1,600.0	1,585.2	1,608.7	1,606.3	4.6	3.4	-172.80	-11.5	23.0	152.7	146.0	6.78	22.518		
1,700.0	1,683.0	1,708.4	1,705.0	5.1	3.7	-171.99	-23.8	29.7	160.6	153.3	7.27	22.092		
1,800.0	1,780.8	1,808.1	1,803.6	5.5	4.0	-171.26	-36.0	36.4	168.5	160.7	7.77	21.696		
1,900.0	1,878.5	1,907.7	1,902.3	6.0	4.3	-170.60	-48.2	43.2	176.4	168.1	8.27	21.330		
2,000.0	1,976.3	2,007.4	2,001.0	6.4	4.6	-169.99	-60.4	49.9	184.3	175.6	8.78	20.991		
2,100.0	2,074.1	2,107.1	2,099.7	6.9	4.9	-169.43	-72.6	56.6	192.3	183.0	9.30	20.677		
2,200.0	2,171.9	2,206.7	2,198.4	7.3	5.2	-168.92	-84.8	63.3	200.3	190.4	9.82	20.385		
2,300.0	2,269.6	2,306.4	2,297.1	7.8	5.5	-168.45	-97.0	70.0	208.2	197.9	10.35	20.114		
2,400.0	2,367.4	2,406.1	2,395.8	8.2	5.8	-168.01	-109.2	76.8	216.2	205.4	10.89	19.863		
2,500.0	2,465.2	2,505.7	2,494.4	8.7	6.2	-167.60	-121.5	83.5	224.3	212.8	11.42	19.628		
2,600.0	2,562.9	2,605.4	2,593.1	9.2	6.5	-167.22	-133.7	90.2	232.3	220.3	11.97	19.410		
2,700.0	2,660.7	2,705.1	2,691.8	9.6	6.8	-166.86	-145.9	96.9	240.3	227.8	12.51	19.207		
2,800.0	2,758.5	2,804.7	2,790.5	10.1	7.2	-166.53	-158.1	103.6	248.3	235.3	13.06	19.016		
2,900.0	2,856.2	2,904.4	2,889.2	10.5	7.5	-166.22	-170.3	110.4	256.4	242.8	13.61	18.838		
3,000.0	2,954.0	3,004.1	2,987.9	11.0	7.8	-165.93	-182.5	117.1	264.4	250.3	14.16	18.670		
3,100.0	3,051.8	3,103.7	3,086.6	11.5	8.2	-165.66	-194.7	123.8	272.5	257.8	14.72	18.513		
3,200.0	3,149.5	3,203.4	3,185.3	11.9	8.5	-165.40	-207.0	130.5	280.6	265.3	15.28	18.365		
3,300.0	3,247.3	3,303.1	3,283.9	12.4	8.9	-165.15	-219.2	137.2	288.6	272.8	15.84	18.226		
3,400.0	3,345.1	3,402.7	3,382.6	12.8	9.2	-164.92	-231.4	144.0	296.7	280.3	16.40	18.095		
3,500.0	3,442.8	3,502.4	3,481.3	13.3	9.5	-164.70	-243.6	150.7	304.8	287.8	16.96	17.970		
3,600.0	3,540.6	3,602.1	3,580.0	13.8	9.9	-164.50	-255.8	157.4	312.9	295.3	17.52	17.853		
3,700.0	3,638.4	3,701.7	3,678.7	14.2	10.2	-164.30	-268.0	164.1	321.0	302.9	18.09	17.742		
3,800.0	3,736.1	3,801.4	3,777.4	14.7	10.6	-164.11	-280.2	170.8	329.0	310.4	18.66	17.636		
3,900.0	3,833.9	3,901.1	3,876.1	15.1	10.9	-163.93	-292.4	177.6	337.1	317.9	19.23	17.536		
4,000.0	3,931.7	4,000.7	3,974.8	15.6	11.3	-163.76	-304.7	184.3	345.2	325.4	19.80	17.440		
4,100.0	4,029.4	4,100.4	4,073.4	16.1	11.6	-163.60	-316.9	191.0	353.3	333.0	20.37	17.350		
4,200.0	4,127.2	4,200.1	4,172.1	16.5	11.9	-163.45	-329.1	197.7	361.4	340.5	20.94	17.263		
4,300.0	4,225.0	4,299.7	4,270.8	17.0	12.3	-163.30	-341.3	204.4	369.6	348.0	21.51	17.181		
4,400.0	4,322.8	4,399.1	4,369.2	17.5	12.6	-163.16	-353.5	211.1	377.7	355.6	22.08	17.103		
4,500.0	4,420.5	4,490.7	4,460.1	17.9	12.9	-163.13	-363.7	216.7	386.8	364.2	22.58	17.134		
4,600.0	4,518.7	4,582.2	4,551.0	18.2	13.1	-163.22	-371.9	221.3	396.3	373.3	23.01	17.218		
4,700.0	4,617.3	4,673.5	4,642.0	18.5	13.3	-163.36	-378.3	224.8	405.3	381.9	23.42	17.308		
4,800.0	4,716.3	4,764.6	4,733.0	18.7	13.4	-163.55	-382.7	227.2	413.9	390.1	23.78	17.404		
4,900.0	4,815.7	4,855.6	4,824.0	19.0	13.6	-163.79	-385.3	228.6	422.0	397.9	24.11	17.505		
5,000.0	4,915.3	4,947.9	4,916.3	19.2	13.7	-164.08	-385.9	229.0	429.7	405.3	24.41	17.604		

CC - Min centre to center distance or convergent point, SF - min separation factor, ES - min ellipse separation

Company:	Synergy Resources	Local Co-ordinate Reference:	Well SRC Cannon 14-16CHZ
Project:	SEC.16-T4N-R68W	TVD Reference:	WELL @ 4942.5ft (Ensign Rig #131 -RKB -13.5')
Reference Site:	SRC Cannon Pad Sec.16-T4N-R68W	MD Reference:	WELL @ 4942.5ft (Ensign Rig #131 -RKB -13.5')
Site Error:	0.0ft	North Reference:	True
Reference Well:	SRC Cannon 14-16CHZ	Survey Calculation Method:	Minimum Curvature
Well Error:	0.0ft	Output errors are at	2.00 sigma
Reference Wellbore	Wellbore #1	Database:	Landmark
Reference Design:	Plan #4 (1-23-15)	Offset TVD Reference:	Offset Datum

Offset Design		SRC Cannon Pad Sec.16-T4N-R68W - SRC Cannon 24-16CHZ - Wellbore #1 - Plan #2 (1-12-15)											Offset Site Error:		0.0 ft
Survey Program: 0-MWD													Offset Well Error:		0.0 ft
Reference		Offset		Semi Major Axis			Distance							Warning	
Measured Depth	Vertical Depth	Measured Depth	Vertical Depth	Reference	Offset	Highside Toolface	Offset Wellbore Centre		Between Centres	Between Ellipses	Minimum Separation	Separation Factor			
(ft)	(ft)	(ft)	(ft)	(ft)	(ft)	(°)	+N/-S (ft)	+E/-W (ft)	(ft)	(ft)	(ft)				
5,100.0	5,015.1	5,047.7	5,016.1	19.3	13.9	-164.32	-385.9	229.0	435.6	410.9	24.71	17.633			
5,200.0	5,115.0	5,147.7	5,116.0	19.5	14.0	-164.46	-385.9	229.0	439.1	414.1	24.99	17.569			
5,300.0	5,215.0	5,247.6	5,216.0	19.6	14.2	0.01	-385.9	229.0	440.0	407.2	32.77	13.425			
5,400.0	5,315.0	5,347.6	5,316.0	19.7	14.3	0.01	-385.9	229.0	440.0	406.9	33.03	13.318			
5,500.0	5,415.0	5,447.6	5,416.0	19.8	14.5	0.01	-385.9	229.0	440.0	406.7	33.30	13.212			
5,600.0	5,515.0	5,547.6	5,516.0	19.9	14.7	0.01	-385.9	229.0	440.0	406.4	33.57	13.105			
5,700.0	5,615.0	5,647.6	5,616.0	20.0	14.8	0.01	-385.9	229.0	440.0	406.1	33.85	12.999			
5,800.0	5,715.0	5,747.6	5,716.0	20.1	15.0	0.01	-385.9	229.0	440.0	405.8	34.12	12.893			
5,900.0	5,815.0	5,847.6	5,816.0	20.3	15.1	0.01	-385.9	229.0	440.0	405.6	34.41	12.788			
6,000.0	5,915.0	5,947.9	5,916.3	20.4	15.3	90.53	-386.0	227.7	440.0	412.2	27.72	15.874			
6,100.0	6,014.0	6,048.5	6,015.7	20.5	15.4	90.43	-386.1	213.3	440.0	412.0	27.93	15.751			
6,200.0	6,109.6	6,149.0	6,111.5	20.5	15.5	90.33	-386.4	183.5	439.9	411.9	28.04	15.688			
6,300.0	6,199.5	6,249.3	6,201.4	20.5	15.5	90.22	-386.8	139.1	439.9	411.8	28.14	15.634			
6,400.0	6,281.5	6,349.5	6,283.0	20.5	15.5	90.10	-387.4	81.2	439.9	411.6	28.38	15.503			
6,500.0	6,353.6	6,449.5	6,354.5	20.5	15.5	89.98	-388.0	11.3	439.9	411.0	28.96	15.193			
6,600.0	6,414.0	6,549.4	6,414.1	20.6	15.5	89.86	-388.8	-68.7	439.9	409.8	30.09	14.623			
6,650.4	6,439.5	6,599.7	6,439.2	20.6	15.6	89.80	-389.2	-112.3	439.9	409.0	30.96	14.212			
6,700.0	6,461.2	6,649.2	6,460.4	20.7	15.8	89.75	-389.6	-157.0	439.9	408.0	31.91	13.785			
6,800.0	6,494.0	6,748.8	6,492.3	20.9	17.1	89.64	-390.5	-251.3	439.9	405.5	34.48	12.761			
6,900.0	6,511.6	6,848.3	6,509.1	21.5	18.8	89.54	-391.5	-349.2	439.9	402.3	37.68	11.676			
7,000.0	6,513.7	6,947.7	6,510.5	22.7	20.7	89.45	-392.4	-448.5	439.9	398.6	41.35	10.640			
7,100.0	6,507.5	7,047.7	6,503.4	24.3	22.7	89.34	-393.4	-548.2	439.9	394.5	45.41	9.689			
7,200.0	6,501.3	7,147.7	6,496.4	26.3	24.9	89.23	-394.3	-648.0	440.0	390.2	49.74	8.844			
7,300.0	6,495.1	7,247.7	6,489.4	28.4	27.2	89.12	-395.3	-747.7	440.0	385.6	54.31	8.101			
7,400.0	6,488.9	7,347.7	6,482.4	30.7	29.6	89.01	-396.3	-847.4	440.0	380.9	59.05	7.450			
7,500.0	6,482.7	7,447.7	6,475.3	33.0	32.1	88.90	-397.2	-947.2	440.0	376.0	63.93	6.882			
7,600.0	6,476.6	7,547.7	6,468.3	35.5	34.6	88.79	-398.2	-1,046.9	440.0	371.1	68.92	6.384			
7,700.0	6,470.4	7,647.7	6,461.3	37.9	37.1	88.68	-399.1	-1,146.7	440.0	366.0	73.99	5.947			
7,800.0	6,464.2	7,747.7	6,454.3	40.5	39.7	88.58	-400.1	-1,246.4	440.0	360.9	79.13	5.561			
7,900.0	6,458.0	7,847.7	6,447.2	43.0	42.3	88.47	-401.0	-1,346.2	440.0	355.7	84.33	5.218			
8,000.0	6,451.8	7,947.6	6,440.2	45.6	44.9	88.36	-402.0	-1,445.9	440.1	350.5	89.57	4.913			
8,100.0	6,445.6	8,047.6	6,433.2	48.2	47.6	88.25	-403.0	-1,545.7	440.1	345.2	94.85	4.640			
8,200.0	6,439.4	8,147.6	6,426.1	50.8	50.2	88.14	-403.9	-1,645.4	440.1	339.9	100.16	4.394			
8,300.0	6,433.2	8,247.6	6,419.1	53.5	52.9	88.03	-404.9	-1,745.1	440.1	334.6	105.50	4.172			
8,400.0	6,426.7	8,347.6	6,412.1	56.1	55.6	87.96	-405.8	-1,844.9	440.1	329.3	110.86	3.970			
8,500.0	6,417.8	8,447.6	6,405.1	58.8	58.3	88.21	-406.8	-1,944.6	440.1	323.8	116.27	3.785			
8,600.0	6,408.3	8,547.6	6,398.0	61.5	61.0	88.53	-407.7	-2,044.3	440.0	318.3	121.71	3.615			
8,700.0	6,398.8	8,647.6	6,391.0	64.2	63.7	88.85	-408.7	-2,144.1	439.9	312.8	127.16	3.460			
8,800.0	6,389.3	8,747.5	6,384.0	66.9	66.4	89.17	-409.6	-2,243.8	439.9	307.3	132.63	3.317			
8,900.0	6,379.8	8,847.5	6,377.0	69.6	69.1	89.49	-410.6	-2,343.5	439.9	301.7	138.10	3.185			
9,000.0	6,370.4	8,947.5	6,369.9	72.3	71.9	89.81	-411.6	-2,443.2	439.8	296.2	143.58	3.063			
9,100.0	6,360.9	9,047.4	6,362.9	75.0	74.6	90.14	-412.5	-2,542.9	439.8	290.8	149.07	2.950			
9,108.1	6,360.1	9,055.6	6,362.3	75.2	74.8	90.16	-412.6	-2,551.0	439.8	290.3	149.52	2.942			
9,200.0	6,351.4	9,147.4	6,355.9	77.7	77.4	90.46	-413.5	-2,642.6	439.8	285.3	154.56	2.846			
9,300.0	6,341.9	9,247.4	6,348.9	80.4	80.1	90.78	-414.4	-2,742.4	439.8	279.8	160.05	2.748			
9,400.0	6,332.4	9,347.3	6,341.8	83.1	82.8	91.10	-415.4	-2,842.1	439.9	274.3	165.54	2.657			
9,500.0	6,322.9	9,447.3	6,334.8	85.9	85.6	91.42	-416.3	-2,941.8	439.9	268.9	171.04	2.572			
9,600.0	6,313.5	9,547.3	6,327.8	88.6	88.3	91.74	-417.3	-3,041.5	440.0	263.5	176.53	2.492			
9,700.0	6,304.0	9,647.3	6,320.8	91.3	91.1	92.06	-418.3	-3,141.2	440.1	258.0	182.02	2.418			
9,800.0	6,294.5	9,747.2	6,313.7	94.1	93.9	92.38	-419.2	-3,241.0	440.2	252.6	187.51	2.347			

CC - Min centre to center distance or convergent point, SF - min separation factor, ES - min ellipse separation

Company:	Synergy Resources	Local Co-ordinate Reference:	Well SRC Cannon 14-16CHZ
Project:	SEC.16-T4N-R68W	TVD Reference:	WELL @ 4942.5ft (Ensign Rig #131 -RKB - 13.5')
Reference Site:	SRC Cannon Pad Sec.16-T4N-R68W	MD Reference:	WELL @ 4942.5ft (Ensign Rig #131 -RKB - 13.5')
Site Error:	0.0ft	North Reference:	True
Reference Well:	SRC Cannon 14-16CHZ	Survey Calculation Method:	Minimum Curvature
Well Error:	0.0ft	Output errors are at	2.00 sigma
Reference Wellbore	Wellbore #1	Database:	Landmark
Reference Design:	Plan #4 (1-23-15)	Offset TVD Reference:	Offset Datum

Offset Design SRC Cannon Pad Sec.16-T4N-R68W - SRC Cannon 24-16CHZ - Wellbore #1 - Plan #2 (1-12-15)													Offset Site Error:	0.0 ft
Survey Program: 0-MWD													Offset Well Error:	0.0 ft
Reference	Offset	Semi Major Axis		Distance										Warning
Measured Depth (ft)	Vertical Depth (ft)	Measured Depth (ft)	Vertical Depth (ft)	Reference (ft)	Offset (ft)	Highside Toolface (°)	Offset Wellbore Centre +N/-S (ft)	Offset Wellbore Centre +E/-W (ft)	Between Centres (ft)	Between Ellipses (ft)	Minimum Separation (ft)	Separation Factor		
9,900.0	6,285.0	9,847.2	6,306.7	96.8	96.6	92.70	-420.2	-3,340.7	440.3	247.3	192.99	2.281		
10,000.0	6,275.5	9,947.2	6,299.7	99.6	99.4	93.02	-421.1	-3,440.4	440.4	241.9	198.47	2.219		
10,100.0	6,266.0	10,047.1	6,292.7	102.3	102.1	93.34	-422.1	-3,540.1	440.5	236.6	203.95	2.160		
10,200.0	6,256.6	10,147.1	6,285.6	105.1	104.9	93.66	-423.0	-3,639.8	440.6	231.2	209.41	2.104		
10,300.0	6,247.1	10,247.1	6,278.6	107.8	107.7	93.98	-424.0	-3,739.5	440.8	225.9	214.88	2.051		
10,400.0	6,237.6	10,347.0	6,271.6	110.6	110.4	94.30	-424.9	-3,839.3	441.0	220.6	220.33	2.001		
10,500.0	6,228.1	10,447.0	6,264.5	113.3	113.2	94.62	-425.9	-3,939.0	441.2	215.4	225.78	1.954		
10,600.0	6,218.6	10,547.0	6,257.5	116.1	116.0	94.94	-426.9	-4,038.7	441.4	210.1	231.21	1.909		
10,700.0	6,209.1	10,646.9	6,250.5	118.8	118.8	95.26	-427.8	-4,138.4	441.6	204.9	236.64	1.866		
10,800.0	6,199.7	10,746.9	6,243.5	121.6	121.5	95.57	-428.8	-4,238.1	441.8	199.7	242.06	1.825		
10,900.0	6,190.2	10,846.9	6,236.4	124.4	124.3	95.89	-429.7	-4,337.8	442.0	194.6	247.46	1.786		
11,000.0	6,180.7	10,946.9	6,229.4	127.1	127.1	96.21	-430.7	-4,437.6	442.3	189.4	252.86	1.749		
11,100.0	6,171.2	11,045.3	6,222.5	128.9	129.8	96.52	-431.6	-4,535.8	442.6	185.3	257.23	1.720		
11,107.5	6,170.5	11,045.3	6,222.5	129.1	129.8	96.52	-431.6	-4,535.8	442.7	185.3	257.36	1.720 SF		

Company:	Synergy Resources	Local Co-ordinate Reference:	Well SRC Cannon 14-16CHZ
Project:	SEC.16-T4N-R68W	TVD Reference:	WELL @ 4942.5ft (Ensign Rig #131 -RKB - 13.5')
Reference Site:	SRC Cannon Pad Sec.16-T4N-R68W	MD Reference:	WELL @ 4942.5ft (Ensign Rig #131 -RKB - 13.5')
Site Error:	0.0ft	North Reference:	True
Reference Well:	SRC Cannon 14-16CHZ	Survey Calculation Method:	Minimum Curvature
Well Error:	0.0ft	Output errors are at	2.00 sigma
Reference Wellbore	Wellbore #1	Database:	Landmark
Reference Design:	Plan #4 (1-23-15)	Offset TVD Reference:	Offset Datum

Offset Design SRC Cannon Pad Sec.16-T4N-R68W - SRC Cannon H-16CHZ - Wellbore #1 - Plan #2 (1-15-15)														Offset Site Error: 0.0ft
Survey Program: 0-MWD														Offset Well Error: 0.0ft
Reference	Offset	Semi Major Axis		Distance		Warning								
Measured Depth (ft)	Vertical Depth (ft)	Measured Depth (ft)	Vertical Depth (ft)	Reference (ft)	Offset (ft)	Highside Toolface (°)	Offset Wellbore Centre +N/-S (ft)	+E/-W (ft)	Between Centres (ft)	Between Ellipses (ft)	Minimum Separation (ft)	Separation Factor		
0.0	0.0	2.0	2.0	0.0	0.0	0.00	90.0	0.0	90.0	90.0	0.00	N/A		
100.0	100.0	102.0	102.0	0.1	0.1	0.00	90.0	0.0	90.0	89.8	0.23	392.691		
200.0	200.0	202.0	202.0	0.3	0.3	0.00	90.0	0.0	90.0	89.4	0.68	132.631		
300.0	300.0	302.0	302.0	0.6	0.6	0.00	90.0	0.0	90.0	88.9	1.13	79.790		
400.0	400.0	402.0	402.0	0.8	0.8	0.00	90.0	0.0	90.0	88.5	1.58	57.058 CC, ES		
500.0	500.0	502.0	502.0	1.0	1.0	-164.72	90.0	0.0	91.3	89.3	2.00	45.572		
600.0	599.9	601.9	601.9	1.2	1.2	-165.33	90.0	0.0	95.1	92.7	2.42	39.332		
700.0	699.7	701.7	701.7	1.4	1.5	-166.25	90.0	0.0	101.4	98.6	2.84	35.667		
800.0	799.3	801.3	801.3	1.6	1.7	-167.35	90.0	0.0	110.3	107.1	3.28	33.665		
900.0	898.6	900.6	900.6	1.9	1.9	-168.52	90.0	0.0	121.8	118.1	3.72	32.784		
1,000.0	997.5	999.5	999.5	2.2	2.1	-169.69	90.0	0.0	135.9	131.8	4.16	32.685 SF		
1,100.0	1,096.1	1,098.1	1,098.1	2.5	2.4	-170.78	90.0	0.0	152.6	148.0	4.60	33.152		
1,200.0	1,194.2	1,196.2	1,196.2	2.9	2.6	-171.78	90.0	0.0	171.9	166.9	5.05	34.032		
1,300.0	1,291.9	1,293.9	1,293.9	3.3	2.8	-172.67	90.0	0.0	192.7	187.2	5.51	34.978		
1,400.0	1,389.7	1,391.7	1,391.7	3.7	3.0	-173.39	90.0	0.0	213.6	207.6	5.97	35.754		
1,500.0	1,487.5	1,485.4	1,485.4	4.2	3.2	-173.81	90.9	0.5	235.3	228.8	6.43	36.567		
1,600.0	1,585.2	1,578.0	1,577.9	4.6	3.4	-173.83	93.6	2.1	258.8	251.9	6.90	37.520		
1,700.0	1,683.0	1,669.6	1,669.4	5.1	3.6	-173.55	98.3	4.7	284.1	276.7	7.36	38.586		
1,800.0	1,780.8	1,760.3	1,759.8	5.5	3.8	-173.06	104.8	8.4	311.2	303.4	7.83	39.742		
1,900.0	1,878.5	1,850.0	1,848.9	6.0	4.1	-172.42	113.0	13.1	340.1	331.8	8.30	40.964		
2,000.0	1,976.3	1,938.5	1,936.7	6.4	4.3	-171.67	122.9	18.8	370.9	362.1	8.78	42.237		
2,100.0	2,074.1	2,025.8	2,023.0	6.9	4.5	-170.87	134.4	25.4	403.4	394.1	9.27	43.541		
2,200.0	2,171.9	2,118.8	2,114.7	7.3	4.8	-170.02	147.8	33.0	437.1	427.4	9.77	44.757		
2,300.0	2,269.6	2,212.7	2,207.3	7.8	5.0	-169.29	161.4	40.7	470.9	460.6	10.27	45.832		
2,400.0	2,367.4	2,306.7	2,300.0	8.2	5.3	-168.66	174.9	48.5	504.8	494.0	10.79	46.798		
2,500.0	2,465.2	2,400.6	2,392.7	8.7	5.6	-168.10	188.5	56.2	538.7	527.4	11.30	47.662		
2,600.0	2,562.9	2,494.6	2,485.3	9.2	5.9	-167.61	202.0	63.9	572.6	560.8	11.82	48.438		

Company:	Synergy Resources	Local Co-ordinate Reference:	Well SRC Cannon 14-16CHZ
Project:	SEC.16-T4N-R68W	TVD Reference:	WELL @ 4942.5ft (Ensign Rig #131 -RKB - 13.5')
Reference Site:	SRC Cannon Pad Sec.16-T4N-R68W	MD Reference:	WELL @ 4942.5ft (Ensign Rig #131 -RKB - 13.5')
Site Error:	0.0ft	North Reference:	True
Reference Well:	SRC Cannon 14-16CHZ	Survey Calculation Method:	Minimum Curvature
Well Error:	0.0ft	Output errors are at	2.00 sigma
Reference Wellbore	Wellbore #1	Database:	Landmark
Reference Design:	Plan #4 (1-23-15)	Offset TVD Reference:	Offset Datum

Offset Design SRC Cannon Pad Sec.16-T4N-R68W - SRC Cannon H-16NHZ - Wellbore #1 - Plan #2 (1-12-15)														Offset Site Error:	0.0 ft
Survey Program: 0-MWD														Offset Well Error:	0.0 ft
Reference	Offset	Semi Major Axis		Distance		Warning									
Measured Depth (ft)	Vertical Depth (ft)	Measured Depth (ft)	Vertical Depth (ft)	Reference (ft)	Offset (ft)	Highside Toolface (°)	Offset Wellbore Centre +N/-S (ft)	+E/-W (ft)	Between Centres (ft)	Between Ellipses (ft)	Minimum Separation (ft)	Separation Factor			
0.0	0.0	3.0	3.0	0.0	0.0	0.00	105.0	0.0	105.0	105.0	0.00	N/A			
100.0	100.0	103.0	103.0	0.1	0.1	0.00	105.0	0.0	105.0	104.8	0.23	453.688			
200.0	200.0	203.0	203.0	0.3	0.3	0.00	105.0	0.0	105.0	104.4	0.68	154.224			
300.0	300.0	303.0	303.0	0.6	0.6	0.00	105.0	0.0	105.0	103.9	1.13	92.902			
400.0	400.0	403.0	403.0	0.8	0.8	0.00	105.0	0.0	105.0	103.5	1.58	66.472 CC, ES			
500.0	500.0	503.0	503.0	1.0	1.0	-164.69	105.0	0.0	106.3	104.3	2.01	53.002			
600.0	599.9	602.9	602.9	1.2	1.2	-165.22	105.0	0.0	110.1	107.7	2.42	45.496			
700.0	699.7	702.7	702.7	1.4	1.5	-166.02	105.0	0.0	116.4	113.6	2.85	40.909			
800.0	799.3	802.3	802.3	1.6	1.7	-167.00	105.0	0.0	125.3	122.0	3.28	38.211			
900.0	898.6	901.6	901.6	1.9	1.9	-168.07	105.0	0.0	136.8	133.1	3.72	36.787			
1,000.0	997.5	1,000.0	1,000.0	2.2	2.1	-169.15	105.0	0.0	150.9	146.7	4.16	36.265 SF			
1,100.0	1,096.1	1,095.3	1,095.3	2.5	2.3	-169.98	106.1	0.4	168.7	164.0	4.60	36.643			
1,200.0	1,194.2	1,188.8	1,188.7	2.9	2.6	-170.42	109.4	1.7	191.1	186.1	5.05	37.848			
1,300.0	1,291.9	1,281.0	1,280.7	3.3	2.8	-170.60	114.7	3.7	217.2	211.7	5.51	39.439			
1,400.0	1,389.7	1,372.0	1,371.5	3.7	3.0	-170.49	122.0	6.4	245.3	239.3	5.97	41.100			
1,500.0	1,487.5	1,461.9	1,460.8	4.2	3.2	-170.20	131.1	9.9	275.5	269.0	6.43	42.810			
1,600.0	1,585.2	1,550.5	1,548.6	4.6	3.4	-169.78	142.1	14.0	307.6	300.7	6.90	44.553			
1,700.0	1,683.0	1,637.8	1,634.9	5.1	3.7	-169.29	154.7	18.8	341.7	334.3	7.38	46.314			
1,800.0	1,780.8	1,725.6	1,721.2	5.5	3.9	-168.74	169.2	24.3	377.7	369.8	7.86	48.060			
1,900.0	1,878.5	1,818.6	1,812.7	6.0	4.2	-168.22	185.1	30.4	414.3	405.9	8.35	49.591			
2,000.0	1,976.3	1,911.6	1,904.1	6.4	4.5	-167.78	201.1	36.4	450.8	442.0	8.85	50.930			
2,100.0	2,074.1	2,004.6	1,995.5	6.9	4.9	-167.41	217.0	42.4	487.5	478.1	9.35	52.123			
2,200.0	2,171.9	2,097.6	2,087.0	7.3	5.2	-167.09	232.9	48.5	524.1	514.2	9.86	53.171			
2,300.0	2,269.6	2,190.6	2,178.4	7.8	5.5	-166.82	248.9	54.5	560.7	550.4	10.36	54.100			
2,400.0	2,367.4	2,283.6	2,269.9	8.2	5.8	-166.57	264.8	60.5	597.4	586.5	10.88	54.931			

Company:	Synergy Resources	Local Co-ordinate Reference:	Well SRC Cannon 14-16CHZ
Project:	SEC.16-T4N-R68W	TVD Reference:	WELL @ 4942.5ft (Ensign Rig #131 -RKB - 13.5')
Reference Site:	SRC Cannon Pad Sec.16-T4N-R68W	MD Reference:	WELL @ 4942.5ft (Ensign Rig #131 -RKB - 13.5')
Site Error:	0.0ft	North Reference:	True
Reference Well:	SRC Cannon 14-16CHZ	Survey Calculation Method:	Minimum Curvature
Well Error:	0.0ft	Output errors are at	2.00 sigma
Reference Wellbore	Wellbore #1	Database:	Landmark
Reference Design:	Plan #4 (1-23-15)	Offset TVD Reference:	Offset Datum

Offset Design														Offset Site Error:	0.0 ft
SRC Cannon Pad Sec.16-T4N-R68W - SRC Cannon K-16CHZ - Wellbore #1 - Plan #2 (1-12-15)														Offset Well Error:	0.0 ft
Survey Program: 0-MWD															
Reference		Offset		Semi Major Axis			Distance								
Measured Depth (ft)	Vertical Depth (ft)	Measured Depth (ft)	Vertical Depth (ft)	Reference (ft)	Offset (ft)	Highside Toolface (°)	Offset Wellbore Centre +N/-S (ft)	+E/-W (ft)	Between Centres (ft)	Between Ellipses (ft)	Minimum Separation (ft)	Separation Factor	Warning		
0.0	0.0	4.0	4.0	0.0	0.0	0.00	150.0	0.0	150.0	150.0	0.00	N/A			
100.0	100.0	104.0	104.0	0.1	0.1	0.00	150.0	0.0	150.0	149.8	0.23	641.799			
165.3	165.3	169.3	169.3	0.3	0.3	0.00	150.0	0.0	150.0	149.5	0.53	284.568 CC			
200.0	200.0	203.9	203.9	0.3	0.3	0.00	150.0	0.0	150.0	149.3	0.68	219.658 ES			
300.0	300.0	300.0	300.0	0.6	0.6	0.09	151.3	0.2	151.4	150.2	1.13	134.521			
400.0	400.0	396.2	396.2	0.8	0.8	0.35	155.0	0.9	155.2	153.6	1.57	98.673			
500.0	500.0	492.0	491.8	1.0	1.0	-163.87	161.0	2.1	162.7	160.7	2.00	81.175			
600.0	599.9	587.1	586.4	1.2	1.2	-163.67	169.3	3.6	175.2	172.8	2.43	72.171			
700.0	699.7	681.1	679.9	1.4	1.5	-163.56	179.8	5.6	192.6	189.7	2.86	67.253			
800.0	799.3	773.8	771.6	1.6	1.8	-163.53	192.3	8.0	214.8	211.5	3.31	64.935			
900.0	898.6	864.7	861.4	1.9	2.1	-163.53	206.7	10.7	241.8	238.0	3.76	64.332 SF			
1,000.0	997.5	953.7	948.8	2.2	2.4	-163.56	222.9	13.7	273.3	269.1	4.21	64.895			
1,100.0	1,096.1	1,040.4	1,033.7	2.5	2.8	-163.60	240.5	17.1	309.4	304.7	4.67	66.270			
1,200.0	1,194.2	1,124.8	1,115.8	2.9	3.1	-163.63	259.5	20.7	349.8	344.6	5.13	68.214			
1,300.0	1,291.9	1,206.9	1,195.2	3.3	3.5	-163.79	279.7	24.5	393.5	387.9	5.59	70.334			
1,400.0	1,389.7	1,287.3	1,272.6	3.7	3.9	-163.89	301.1	28.5	439.0	433.0	6.07	72.365			
1,500.0	1,487.5	1,369.4	1,351.2	4.2	4.4	-163.93	324.4	32.9	486.3	479.7	6.55	74.236			
1,600.0	1,585.2	1,457.3	1,435.3	4.6	4.9	-163.95	349.8	37.7	533.9	526.9	7.05	75.738			
1,700.0	1,683.0	1,545.2	1,519.3	5.1	5.4	-163.97	375.2	42.5	581.6	574.1	7.55	77.078			

Company:	Synergy Resources	Local Co-ordinate Reference:	Well SRC Cannon 14-16CHZ
Project:	SEC.16-T4N-R68W	TVD Reference:	WELL @ 4942.5ft (Ensign Rig #131 -RKB -13.5')
Reference Site:	SRC Cannon Pad Sec.16-T4N-R68W	MD Reference:	WELL @ 4942.5ft (Ensign Rig #131 -RKB -13.5')
Site Error:	0.0ft	North Reference:	True
Reference Well:	SRC Cannon 14-16CHZ	Survey Calculation Method:	Minimum Curvature
Well Error:	0.0ft	Output errors are at	2.00 sigma
Reference Wellbore	Wellbore #1	Database:	Landmark
Reference Design:	Plan #4 (1-23-15)	Offset TVD Reference:	Offset Datum

Offset Design													Offset Site Error:	0.0ft
Survey Program: 0-MWD													Offset Well Error:	0.0ft
Reference		Offset		Semi Major Axis			Distance							Warning
Measured Depth (ft)	Vertical Depth (ft)	Measured Depth (ft)	Vertical Depth (ft)	Reference (ft)	Offset (ft)	Highside Toolface (°)	Offset Wellbore Centre +N/-S (ft)	+E/-W (ft)	Between Centres (ft)	Between Ellipses (ft)	Minimum Separation (ft)	Separation Factor		
0.0	0.0	2.0	2.0	0.0	0.0	0.00	60.0	0.0	60.0	60.0	0.00	N/A		
100.0	100.0	102.0	102.0	0.1	0.1	0.00	60.0	0.0	60.0	59.8	0.23	261.836		
200.0	200.0	202.0	202.0	0.3	0.3	0.00	60.0	0.0	60.0	59.4	0.68	88.435		
300.0	300.0	302.0	302.0	0.6	0.6	0.00	60.0	0.0	60.0	58.9	1.13	53.202		
400.0	400.0	402.0	402.0	0.8	0.8	0.00	60.0	0.0	60.0	58.5	1.58	38.045 CC, ES		
500.0	500.0	502.0	502.0	1.0	1.0	-164.83	60.0	0.0	61.3	59.3	2.00	30.596		
600.0	599.9	601.9	601.9	1.2	1.2	-165.72	60.0	0.0	65.1	62.7	2.42	26.924		
700.0	699.7	701.7	701.7	1.4	1.5	-166.99	60.0	0.0	71.4	68.6	2.84	25.125		
800.0	799.3	801.3	801.3	1.6	1.7	-168.43	60.0	0.0	80.4	77.1	3.28	24.530 SF		
900.0	898.6	900.6	900.6	1.9	1.9	-169.87	60.0	0.0	91.9	88.2	3.72	24.744		
1,000.0	997.5	999.5	999.5	2.2	2.1	-171.20	60.0	0.0	106.1	101.9	4.16	25.521		
1,100.0	1,096.1	1,098.1	1,098.1	2.5	2.4	-172.38	60.0	0.0	122.9	118.3	4.60	26.701		
1,200.0	1,194.2	1,196.2	1,196.2	2.9	2.6	-173.38	60.0	0.0	142.2	137.2	5.05	28.173		
1,300.0	1,291.9	1,293.9	1,293.9	3.3	2.8	-174.23	60.0	0.0	163.1	157.6	5.51	29.623		
1,400.0	1,389.7	1,391.7	1,391.7	3.7	3.0	-174.89	60.0	0.0	184.0	178.1	5.97	30.828		
1,500.0	1,487.5	1,489.5	1,489.5	4.2	3.2	-175.41	60.0	0.0	205.0	198.5	6.44	31.846		
1,600.0	1,585.2	1,587.2	1,587.2	4.6	3.5	-175.84	60.0	0.0	225.9	219.0	6.91	32.716		
1,700.0	1,683.0	1,685.0	1,685.0	5.1	3.7	-176.19	60.0	0.0	246.9	239.5	7.38	33.467		
1,800.0	1,780.8	1,782.8	1,782.8	5.5	3.9	-176.49	60.0	0.0	267.8	260.0	7.85	34.121		
1,900.0	1,878.5	1,880.5	1,880.5	6.0	4.1	-176.75	60.0	0.0	288.8	280.5	8.32	34.695		
2,000.0	1,976.3	1,978.3	1,978.3	6.4	4.3	-176.97	60.0	0.0	309.8	301.0	8.80	35.203		
2,100.0	2,074.1	2,076.1	2,076.1	6.9	4.6	-177.16	60.0	0.0	330.8	321.5	9.28	35.656		
2,200.0	2,171.9	2,173.9	2,173.9	7.3	4.8	-177.33	60.0	0.0	351.8	342.0	9.75	36.061		
2,300.0	2,269.6	2,271.6	2,271.6	7.8	5.0	-177.48	60.0	0.0	372.7	362.5	10.23	36.426		
2,400.0	2,367.4	2,369.4	2,369.4	8.2	5.2	-177.61	60.0	0.0	393.7	383.0	10.71	36.756		
2,500.0	2,465.2	2,467.2	2,467.2	8.7	5.4	-177.73	60.0	0.0	414.7	403.5	11.19	37.057		
2,600.0	2,562.9	2,566.9	2,566.9	9.2	5.6	-177.77	60.0	0.6	435.6	423.9	11.67	37.334		
2,700.0	2,660.7	2,667.8	2,667.7	9.6	5.9	-177.49	59.9	3.7	455.8	443.7	12.13	37.564		
2,800.0	2,758.5	2,768.8	2,768.6	10.1	6.1	-176.92	59.8	9.4	475.4	462.8	12.60	37.720		
2,900.0	2,856.2	2,869.7	2,869.2	10.5	6.3	-176.09	59.6	17.9	494.4	481.4	13.08	37.789		
3,000.0	2,954.0	2,969.1	2,968.0	11.0	6.5	-175.08	59.3	28.5	513.1	499.5	13.58	37.795		
3,100.0	3,051.8	3,067.0	3,065.2	11.5	6.7	-174.12	59.0	39.2	531.8	517.7	14.08	37.782		
3,200.0	3,149.5	3,164.8	3,162.5	11.9	6.9	-173.22	58.7	50.0	550.7	536.1	14.58	37.757		
3,300.0	3,247.3	3,262.7	3,259.7	12.4	7.2	-172.38	58.4	60.7	569.6	554.5	15.10	37.720		
3,400.0	3,345.1	3,360.5	3,357.0	12.8	7.4	-171.60	58.1	71.5	588.7	573.1	15.63	37.675		

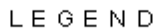
SRC Cannon Pad Sec.16-T4N-R68W - SRC Cannon S-16NHZ - Wellbore #1 - Plan #2 (1-12-15)													Offset Site Error:	0.0 ft
Survey Program: 0-MWD													Offset Well Error:	0.0 ft
Reference		Offset		Semi Major Axis			Distance							Warning
Measured Depth (ft)	Vertical Depth (ft)	Measured Depth (ft)	Vertical Depth (ft)	Reference (ft)	Offset (ft)	Highside Toolface (°)	Offset Wellbore Centre		Between Centres (ft)	Between Ellipses (ft)	Minimum Separation (ft)	Separation Factor		
							+N/-S (ft)	+E/-W (ft)						
0.0	0.0	2.0	2.0	0.0	0.0	0.00	75.0	0.0	75.0	75.0	0.00	N/A		
100.0	100.0	102.0	102.0	0.1	0.1	0.00	75.0	0.0	75.0	74.8	0.23	327.263		
200.0	200.0	202.0	202.0	0.3	0.3	0.00	75.0	0.0	75.0	74.4	0.68	110.533		
300.0	300.0	302.0	302.0	0.6	0.6	0.00	75.0	0.0	75.0	73.9	1.13	66.496		
400.0	400.0	402.0	402.0	0.8	0.8	0.00	75.0	0.0	75.0	73.5	1.58	47.551 CC, ES		
500.0	500.0	502.0	502.0	1.0	1.0	-164.77	75.0	0.0	76.3	74.3	2.00	38.084		
600.0	599.9	601.9	601.9	1.2	1.2	-165.49	75.0	0.0	80.1	77.7	2.42	33.128		
700.0	699.7	701.7	701.7	1.4	1.5	-166.55	75.0	0.0	86.4	83.6	2.84	30.395		
800.0	799.3	801.3	801.3	1.6	1.7	-167.80	75.0	0.0	95.4	92.1	3.28	29.096		
900.0	898.6	900.6	900.6	1.9	1.9	-169.10	75.0	0.0	106.9	103.2	3.72	28.762 SF		
1,000.0	997.5	999.5	999.5	2.2	2.1	-170.35	75.0	0.0	121.0	116.8	4.16	29.101		
1,100.0	1,096.1	1,098.1	1,098.1	2.5	2.4	-171.49	75.0	0.0	137.7	133.1	4.60	29.924		
1,200.0	1,194.2	1,196.2	1,196.2	2.9	2.6	-172.51	75.0	0.0	157.1	152.0	5.05	31.100		
1,300.0	1,291.9	1,293.9	1,293.9	3.3	2.8	-173.39	75.0	0.0	177.9	172.4	5.51	32.298		
1,400.0	1,389.7	1,391.7	1,391.7	3.7	3.0	-174.08	75.0	0.0	198.8	192.8	5.97	33.289		
1,500.0	1,487.5	1,489.5	1,489.5	4.2	3.2	-174.65	75.0	0.0	219.7	213.3	6.44	34.124		
1,600.0	1,585.2	1,587.2	1,587.2	4.6	3.5	-175.11	75.0	0.0	240.6	233.7	6.91	34.835		
1,700.0	1,683.0	1,682.2	1,682.2	5.1	3.7	-175.32	75.6	0.7	262.0	254.7	7.37	35.547		
1,800.0	1,780.8	1,776.2	1,776.2	5.5	3.9	-175.09	77.7	3.1	284.6	276.8	7.84	36.326		
1,900.0	1,878.5	1,869.6	1,869.4	6.0	4.1	-174.51	81.3	7.2	308.4	300.1	8.30	37.144		
2,000.0	1,976.3	1,962.3	1,961.8	6.4	4.3	-173.67	86.3	13.0	333.5	324.7	8.78	37.990		
2,100.0	2,074.1	2,054.1	2,053.0	6.9	4.5	-172.64	92.7	20.4	359.9	350.6	9.26	38.850		
2,200.0	2,171.9	2,145.7	2,143.8	7.3	4.7	-171.47	100.5	29.4	387.6	377.9	9.76	39.711		
2,300.0	2,269.6	2,241.3	2,238.5	7.8	5.0	-170.30	109.2	39.5	416.0	405.7	10.28	40.477		
2,400.0	2,367.4	2,336.8	2,333.1	8.2	5.2	-169.29	117.9	49.5	444.5	433.7	10.80	41.148		
2,500.0	2,465.2	2,432.4	2,427.8	8.7	5.5	-168.39	126.6	59.6	473.2	461.8	11.33	41.750		
2,600.0	2,562.9	2,528.0	2,522.4	9.2	5.8	-167.60	135.2	69.6	501.9	490.0	11.87	42.284		
2,700.0	2,660.7	2,623.5	2,617.0	9.6	6.0	-166.90	143.9	79.6	530.7	518.3	12.41	42.761		
2,800.0	2,758.5	2,719.1	2,711.7	10.1	6.3	-166.26	152.6	89.7	559.6	546.6	12.96	43.189		
2,900.0	2,856.2	2,814.7	2,806.3	10.5	6.6	-165.69	161.3	99.7	588.5	575.0	13.50	43.576		

Company:	Synergy Resources	Local Co-ordinate Reference:	Well SRC Cannon 14-16CHZ
Project:	SEC.16-T4N-R68W	TVD Reference:	WELL @ 4942.5ft (Ensign Rig #131 -RKB - 13.5')
Reference Site:	SRC Cannon Pad Sec.16-T4N-R68W	MD Reference:	WELL @ 4942.5ft (Ensign Rig #131 -RKB - 13.5')
Site Error:	0.0ft	North Reference:	True
Reference Well:	SRC Cannon 14-16CHZ	Survey Calculation Method:	Minimum Curvature
Well Error:	0.0ft	Output errors are at	2.00 sigma
Reference Wellbore	Wellbore #1	Database:	Landmark
Reference Design:	Plan #4 (1-23-15)	Offset TVD Reference:	Offset Datum

Reference Depths are relative to WELL @ 4942.5ft (Ensign Rig #131 -FCoordinates are relative to: SRC Cannon 14-16CHZ
 Offset Depths are relative to Offset Datum
 Central Meridian is -105.500000 °
 Coordinate System is US State Plane 1983, Colorado Northern Zone
 Grid Convergence at Surface is: 0.32°



Reference Depths are relative to WELL @ 4942.5ft (Ensign Rig #131 -FCoordinates are relative to: SRC Cannon 14-16CHZ
Offset Depths are relative to Offset Datum Coordinate System is US State Plane 1983, Colorado Northern Zone
Central Meridian is -105.500000 ° Grid Convergence at Surface is: 0.32°



H-16CHZ, Wellbore #1, Plan #2 (1-15-15) V0		SRC Cannon K-16CHZ, Wellbore #1, Plan #2 (1-12-15) V0		SRC Cannon 14-16NHZ, Wellbore #1, Plan #2 (1-12-15) V0	
S-16CHZ, Wellbore #1, Plan #2 (1-12-15) V0		SRC Cannon 24-16CHZ, Wellbore #1, Plan #2 (1-12-15) V0		SRC Cannon 13-16NHZ, Wellbore #1, Plan #2 (1-12-15) V0	
H-16NHZ, Wellbore #1, Plan #2 (1-12-15) V0		SRC Cannon 13-16CHZ, Wellbore #1, Plan #2 (1-12-15) V0		Zoller #1 (P&A), Wellbore #1, Wellbore #1, Plan #2 (1-12-15) V0	
24-16NHZ, Wellbore #1, Plan #2 (1-12-15) V0		SRC Cannon S-16NHZ, Wellbore #1, Plan #2 (1-12-15) V0			