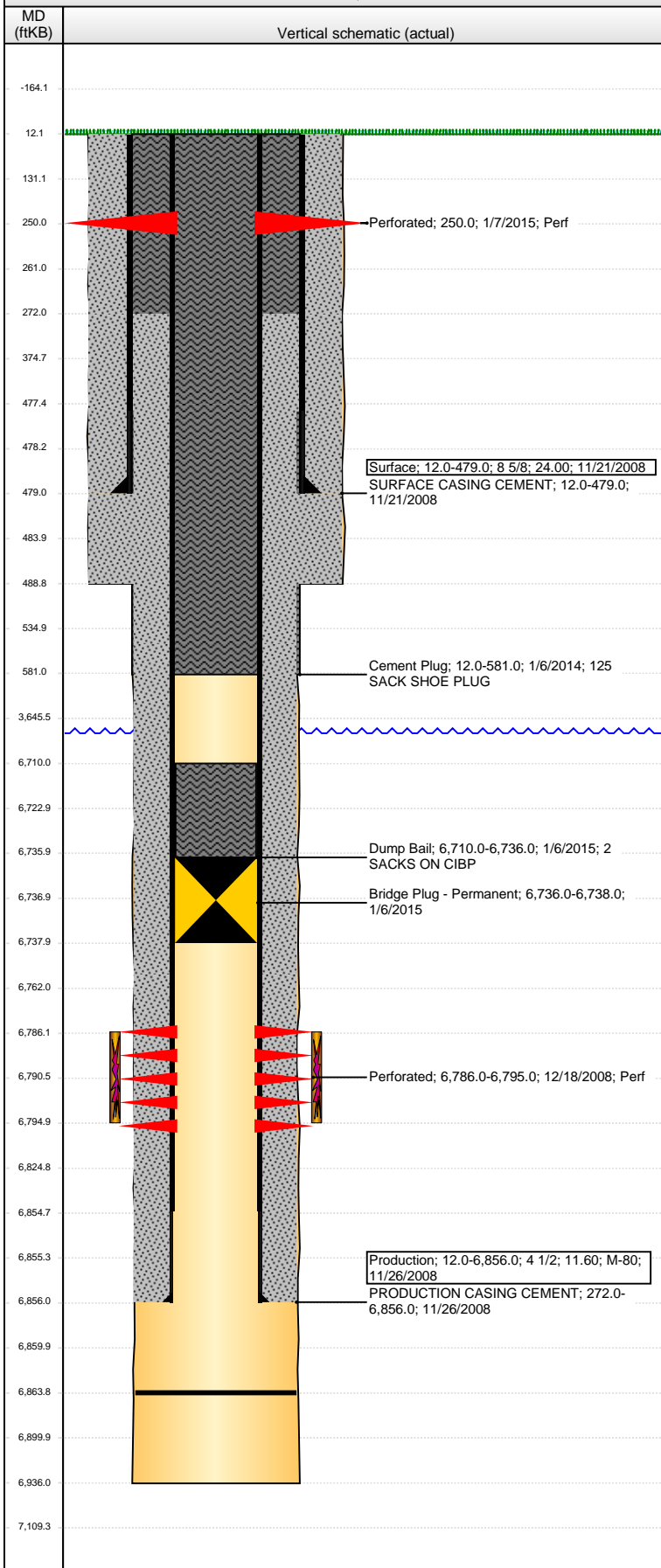


Well Name: PEPPLER 17-33

VERTICAL - ORIGINAL HOLE, 1/23/2015 11:56:37 AM



Well Header			
API	Business Unit	District	Well Config
05-123-24309	DJ BASIN	15	VERTICAL
Original KB Elevation (ft)	KB - GL / MSL (ftKB)	Spud Date	P & A Date
4,677.00	12.00	11/18/2008	1/7/2015
Comment			
WELL STARTS DEVIATING AROUND 6500', GYRO INDICATES AT MOST 9 DEGREES AT 6700'.			
PRODUCTION CSG SET DEPTH/TD PROBABLY DEEPER BASED ON PBSD			
Directions To Well			
Congressional Location			
Quarter 1	Quarter 2	Quarter 3	Quarter 4
		SW	SW
Section	Township	Twnshp N..	Range
17	6 N		63 W
Rng E/W Dir			
W			
Bottom Hole Location			
North-South Distance (ft)	From N or S Line	East-West Distance (ft)	From E or W Line
Plug Back Total Depths			
Date	Depth (ftKB)	Method	Com
12/15/2008	6,860.0	CASED HOLE LOG	DEPTH LOGGER ON CBL
4/28/2009	6,864.0	TAG	CLEAN OUT TO LAND TUBING
Wellbore Sections			
Section Des	Size (in)	Act Top, MD (ftKB)	Act Btm, MD (ftKB)
SURFACE	12 1/4	12.0	489.0
PRODUCTION	7 7/8	489.0	6,936.0
Zone Statuses			
Zone Name	Status Date	Status	Job
CODELL	1/15/2009	PR	DRILLING/COMPLETION - ORIGINAL, 11/18/2008 00:00
CODELL	1/6/2015	P&A	ABANDON WELL, 1/6/2015 06:00
Casing Strings			
Surface, 479.0ftKB			
Casing Description	Run Date	OD (in)	Wt/Len (l...)
Surface	11/21/2008	8 5/8	24.00
Grade	Top, MD (ft...)	MD (ftKB)	
	12.0	479.0	
Production, 6,856.0ftKB			
Casing Description	Run Date	OD (in)	Wt/Len (l...)
Production	11/26/2008	4 1/2	11.60
Grade	Top, MD (ft...)	MD (ftKB)	
M-80	12.0	6,856.0	
Cement			
Description	Top Depth (ftKB)	Bottom Depth (ftKB)	
SURFACE CASING CEMENT	12.0	479.0	
PRODUCTION CASING CEMENT	272.0	6,856.0	
Cement Plug	12.0	581.0	
Dump Bail	6,710.0	6,736.0	
Tubing Strings			
Tubing Description	Run Date	String...	ID (in)
Tubing	4/28/2009	2	3/8
Wt (lb/ft)	Grade	Len (ft)	Set De...
		6,751.00	
Perforation Data			
Zone	Bnch/St g	Entered Shot Total	Date
		2	1/7/2015
CODELL, ORIGINAL HOLE		36	12/18/2008
Top (ftKB)	Btm (ftKB)		
250.00	250.00		
6,786.00	6,795.00		
Stimulations & Treatments			
Date	Zone	Primary Job Type	
12/19/2008	CODELL, ORIGINAL HOLE	DRILLING/COMPLETION - ORIGINAL	
Technical Result	Tech Result Details	Tech Result Note	
Comment			
Other In Hole			
Run Date	Des	OD (in)	Top (ftKB)
1/6/2015	Bridge Plug - Permanent	3.99	6,736.0
			Btm (ftKB)
			6,738.0
Logs			
Date	Type	Top, MD (ftKB)	Btm, MD (ftKB)
11/26/2008	COMPENSATED DENSITY	479.0	6,876.0
11/26/2008	INDUCTION	479.0	6,896.0
12/15/2008	CBL/CCL/GR	12.0	6,859.0

Well Name: PEPPLER 17-33

VERTICAL - ORIGINAL HOLE, 1/23/2015 11:56:38 AM

Logs

