

COLUMBINE LOGGING

Scale: 5" / 100'
Measured Depth Log

Well Name Cutthroat LC28-77HNB

Location SESW SEC 28, T9N, R59W

State COLORADO

County WELD

Country USA

Rig Number H&P 326

API Number 05-123-38851

Field WILDCAT

Region DJ BASIN

Drilling Completed 9/1/2014

Spud Date 8/28/2014

Surface Coordinates 340 FSL, 1468 FWL
40.71499/-103.9871

Bottom Hole Coordinates 675 FFNLL, 1320FFWLL

Ground Elevation 4853'

K.B. Elevation 4883

Logged Interval 640' To 5550'

Total Depth 10368'

Formation NIOBRARA B MARL

Type of Drilling Fluid LSND

Other Symbols

Oil Show

DEAD

EVEN

QUESTIONABLE

SPOTTED STAINING

Porosity

E EARTHY

F FENESTRAL

F FRACTURE

X INTERCRYSTALLINE

Q INTEROOLITIC

MOLDIC

O ORGANIC

P PINPOINT

V VUGGY

Engineering

BIT

CONNECTION (LEFT)

CONNECTION (RIGHT)

CONNECTION GAS

CORE - LOST

CORE - RECOVERED

DST INTERVAL

FAULT

FORMATION TOP

GAS SHOW

MINDEPTH MN DEPTH

NORMAL FAULT

OIL SHOW

OVERTURNED STRATA

REVERSE FAULT

SIDEWALL CORE (LEFT)

SIDEWALL CORE (RIGHT)

SLIDE

SURVEY

TRIP GAS

WIRELINE TESTED - LEFT

WIRELINE TESTED - RT

Rounding

ANGULAR

ROUNDED

SUBANG

SUBRND

Textures

BOUNDSTONE

CHALKY

CRYPTOXLN

E EARTHY

FINELYXLN

GRAINSTONE

L LITHOGRAPHIC

MX MICROXLN

MS MUDSTONE

PS PACKSTONE

WS WACKESTONE

Sorting

M MODERATE

P POOR

W WELL

Zone Color Coding

Oil Condensate Gas
Note Core Pressure
Error Water Seal

Accessories

Fossils

ALGAE
AMPHIPORA
BELEMNITE

F FOSSIL

GASTROPOD

INOCERAMUS

OOLITE

OSTRACOD

ANHYDRITIC

ARGILLACEOUS

ARGILLITE GRAIN

BENTONITE

BITUMENOUS SUBSTANCE

FERRUGINOUS

GLAUCONITE

GYPSEFEROUS

HEAVY MINERAL

KAOLIN

TUFFACEOUS

Stringer

ANHYDRITE STRINGER
BENTONITE STRINGER

^ BIOCLASTIC
^ BRACHIOPOD
^ BRYOZOA
^ CEPHALOPOD
^ CORAL
^ CRINOID
^ ECHINOID
^ FISH
^ FORAMINIFERA

^ PELECYPOD
^ PELLET
^ PISOLITE
^ PLANT REMAINS
^ PLANT SPORES
^ SCAPHOPOD
^ STROMATOPOROID

Minerals

^ BRECCIA FRAGMENTS
^ CALCAREOUS
^ CARBONACEOUS FLAKES
^ CHTDK
^ CHTLT
^ COAL - THIN BEDS
^ DOLOMITIC
+ FELDSPAR
● FERRUGINOUS PELLET

^ MARLSTONE
^ MINERAL CRYSTALS
^ NODULES
^ PHOSPHATE PELLETS
^ PYRITE
^ SALT CAST
^ SANDY
^ SILICEOUS
^ SILTY

^ COAL STRINGER
^ DOLOMITE STRINGER
^ GYPSUM STRINGER
^ LIMESTONE STRINGER
^ MARLSTONE (CALC) STRG
^ MARLSTONE (DOL) STRG
^ SANDSTONE STRINGER
^ SHALE STRINGER
^ SILTSTONE STRINGER

Rock Types

? UNKNOWN
^ ANHYDRITE
^ BENTONITE
^ BRECCIA
^ CEMENT
^ CHALK
^ CHERT
^ CLAY CHOKE SAND
^ CLAYSTONE

^ COAL
^ CONGLOMERATE
^ DOLOMITE
^ GRANITE
^ GYPSUM
^ IGNEOUS
^ LIMESTONE
^ SIDERITE or LIMONITE
^ MARLSTONE

^ METAMORPHIC
^ NO SAMPLE
^ SALT
^ SALT- PEPPER SAND
^ SANDSTONE
^ SHALE
^ SHALE COLORED
^ SHALE GRAY
^ SHALY SANDSTONE

^ SHALY SILTSTONE
^ SILTSTONE
^ SILTY SHALE
^ TILL
^ TUFF
^ WELDED TUFF

Operator

Company NOBLE ENERGY INC.

Address 1625 Broadway Suite 2200
Denver, CO 80202

Geologist

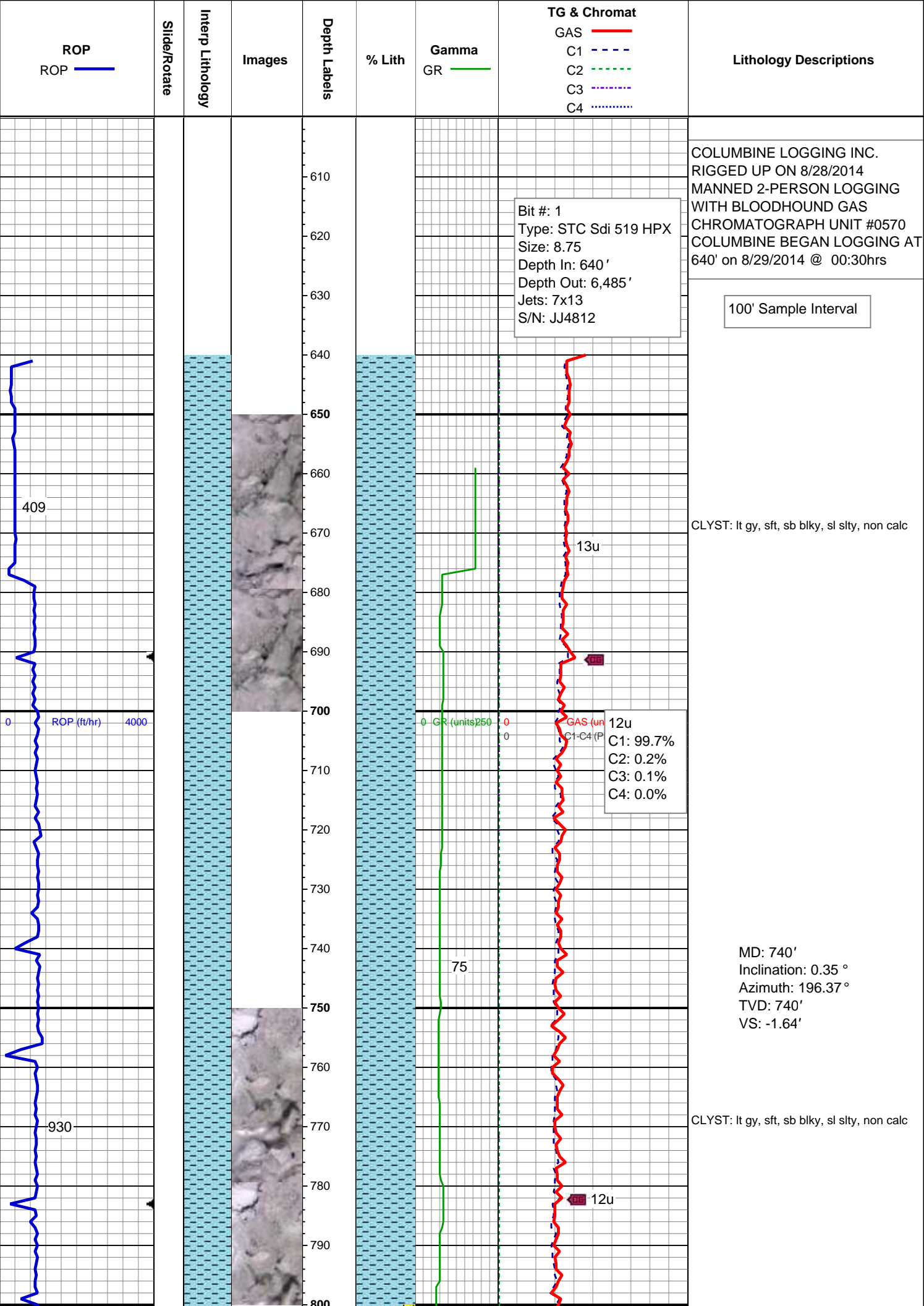
Name EVAN HOWELL

Company NOBLE ENERGY INC.

Address 1625 Broadway Suite 2200
Denver, CO 80202

Other

COLUMBINE LOGGING INC. MATT HOPKINS
COLLIN METZ



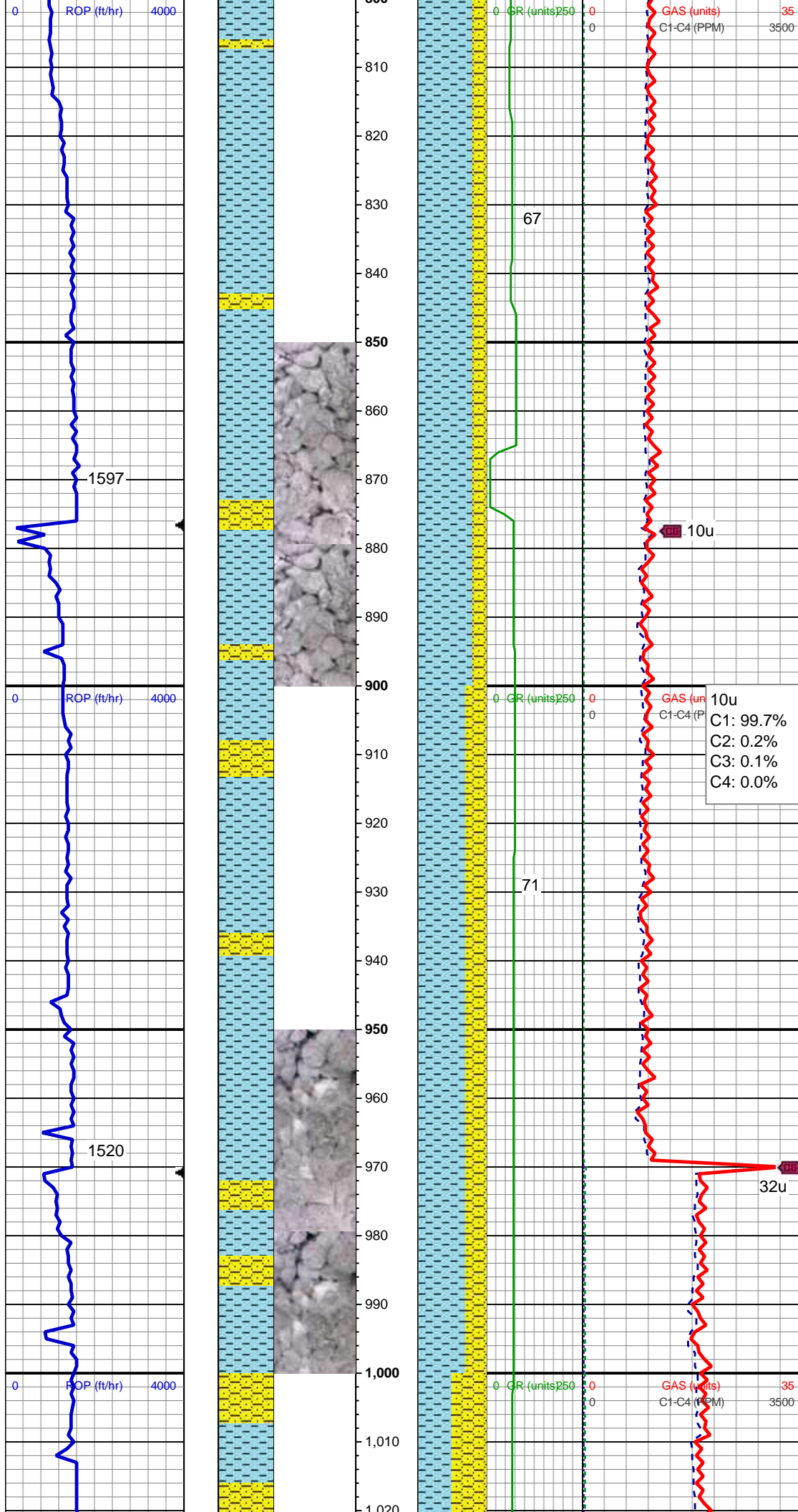
Bit #: 1
Type: STC Sdi 519 HPX
Size: 8.75
Depth In: 640'
Depth Out: 6,485'
Jets: 7x13
S/N: JJ4812

100' Sample Interval

12u
C1: 99.7%
C2: 0.2%
C3: 0.1%
C4: 0.0%

75

12u



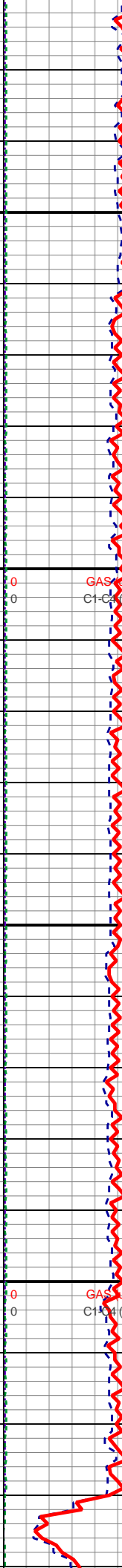
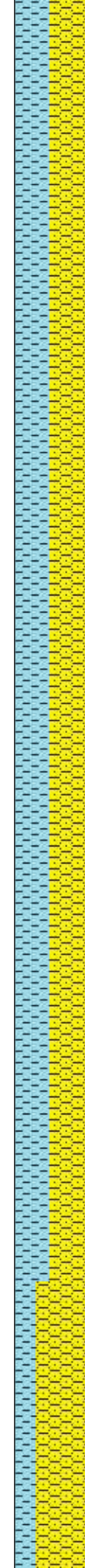
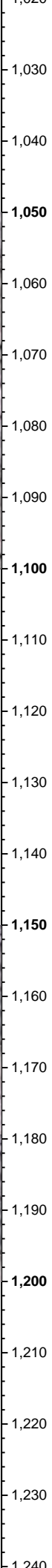
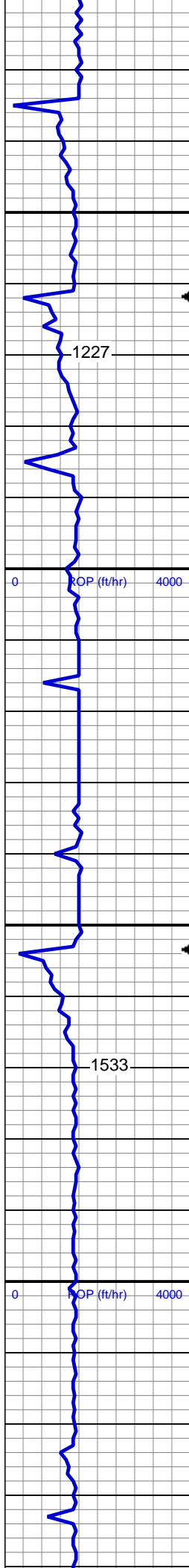
MD: 833'
Inclination: 0.26 °
Azimuth: 181.95 °
TVD: 832.99'
VS: -2.12'

CLYST: lt gy, sft, sb blk, sl slty, non calc;
SHY SS: lt gy-gy, pty s&p, sft-mod frm, vf gr-f gr, sb ang - sb rnd, mod w srt, arg cmt, sl calc

MD: 926'
Inclination: 0.44 °
Azimuth: 187.23 °
TVD: 925.99'
VS: -2.68'

CLYST: lt gy, sft, sb blk, sl slty, non calc;
SHY SS: lt gy-gy, pty s&p, sft-mod frm, vf gr-f gr, sb ang - sb rnd, mod w srt, arg cmt, sl calc

MD: 1,018'
Inclination: 0.35 °
Azimuth: 200.06 °



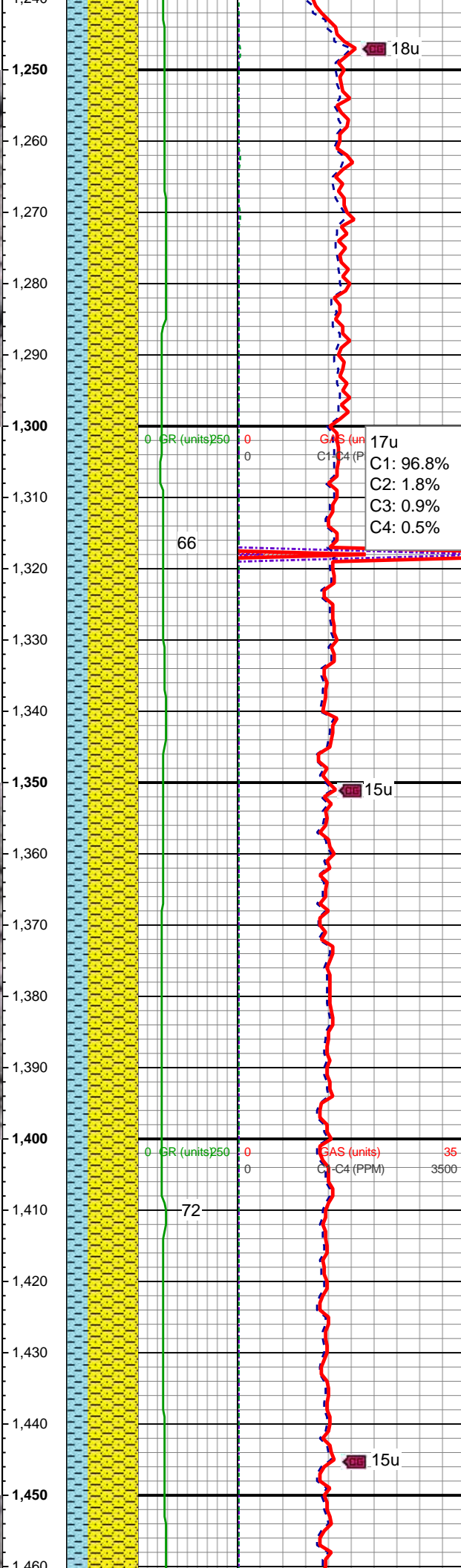
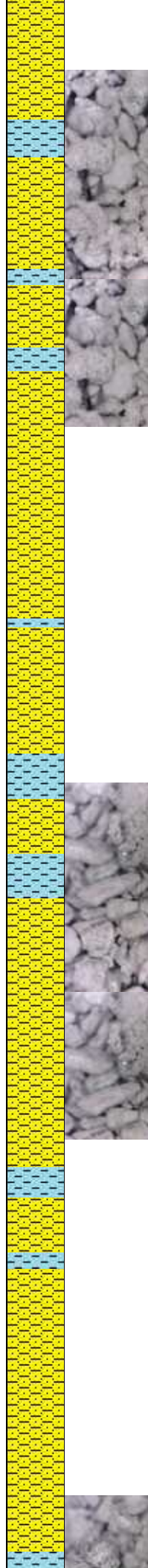
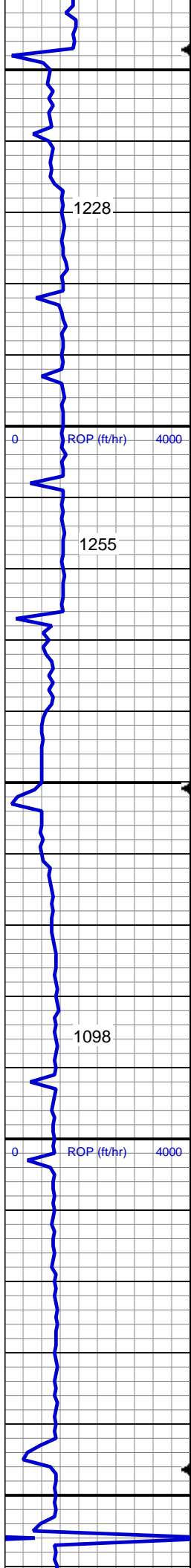
C1: 96.8%
C2: 2.0%
C3: 0.8%
C4: 0.4%

CLYST: lt gy, sft, sb blkly, sl slty, non calc; SHY SS: lt gy-gy, pty s&p, sft-mod frm, vf gr-f gr, sb ang - sb rnd, mod w srt, arg cmt, sl calc

MD: 1,110'
Inclination: 0.53 °
Azimuth: 202.52 °
TVD: 1,109.99'
VS: -3.93'

CLYST: lt gy, sft, sb blkly, sl slty, non calc; SHY SS: lt gy-gy, pty s&p, sft-mod frm, vf gr-f gr, sb ang - sb rnd, mod w srt, arg cmt, sl calc

MD: 1,202'
Inclination: 0.7 °
Azimuth: 217.28 °
TVD: 1,201.98'
VS: -4.74'



CLYST: lt gy, sft, sb blk, sl slty, non calc; SHY SS: lt gy-gy, pty s&p, sft-mod frm, vf gr-f gr, sb ang - sb rnd, mod w srt, arg cmt, sl calc

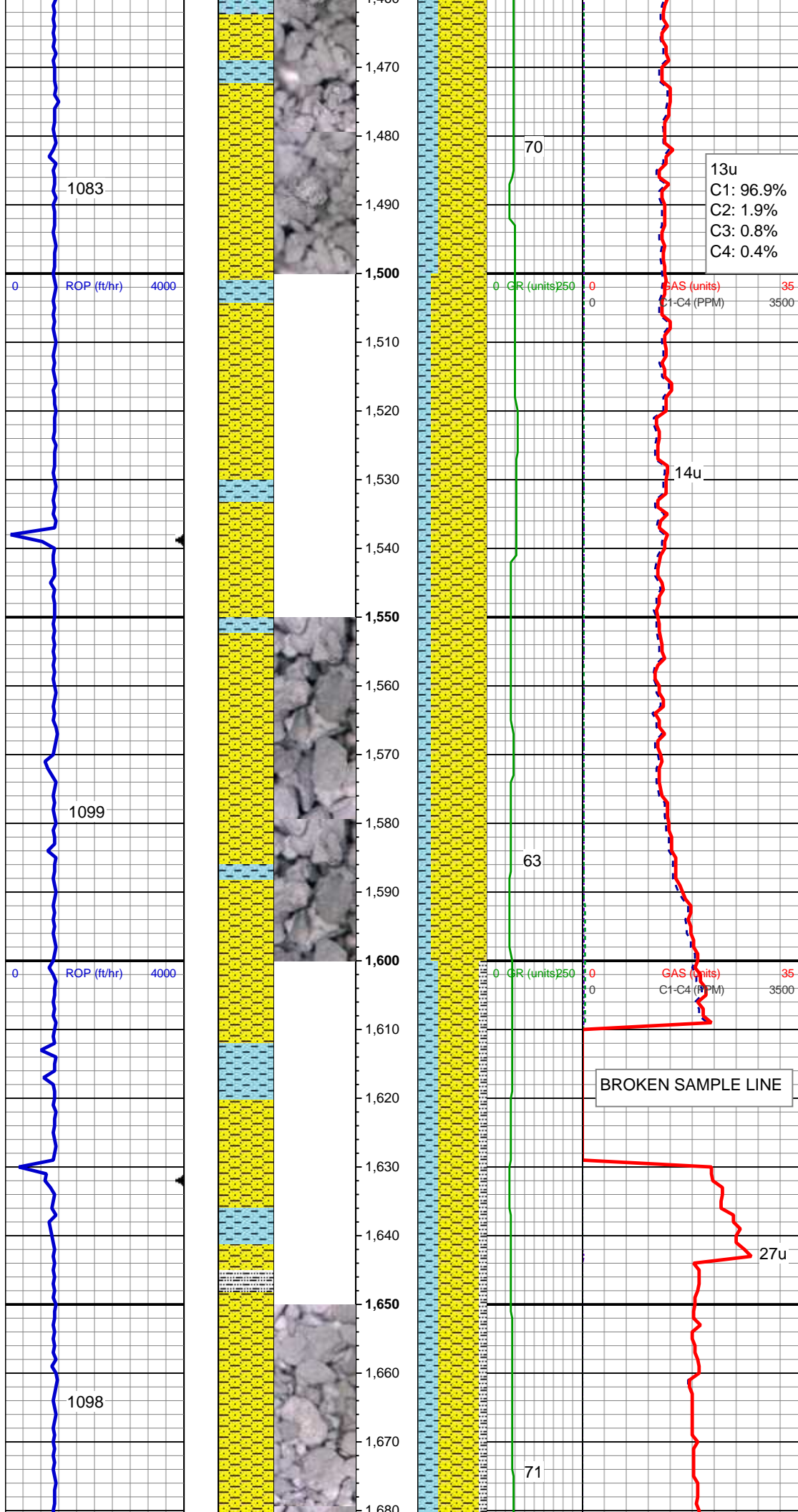
MD: 1,310'
Inclination: 0.7 °
Azimuth: 229.06 °
TVD: 1,309.97'
VS: -5.64'

CLYST: lt gy, sft, sb blk, sl slty, non calc; SHY SS: lt gy-gy, pty s&p, sft-mod frm, vf gr-f gr, sb ang - sb rnd, mod w srt, arg cmt, sl calc

MD: 1,403'
Inclination: 0.7 °
Azimuth: 239.96 °
TVD: 1,402.97'
VS: -6.25'

Mud Wt: 8.65 /28 Vis

CLYST: lt gy, sft, sb blk, sl slty, non calc; SHY SS: lt gy-gy, pty s&p, sft-mod frm, vf gr-f gr, sb ang - sb rnd, mod w srt, arg cmt, sl calc



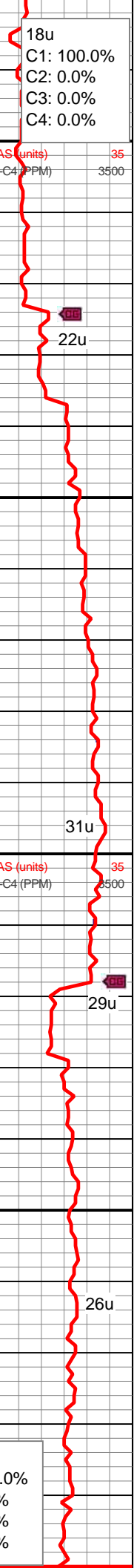
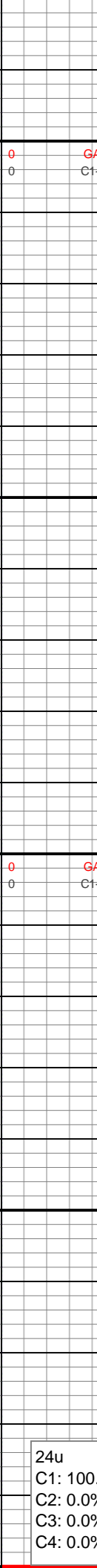
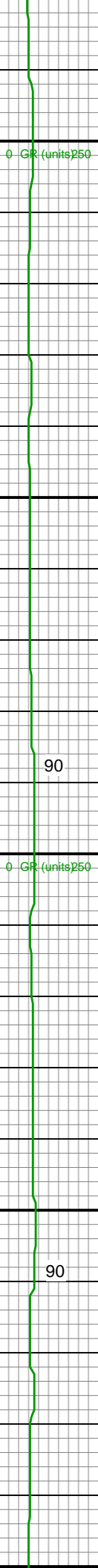
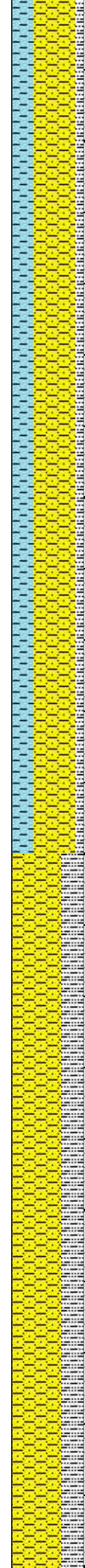
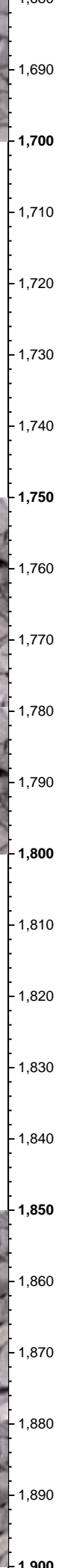
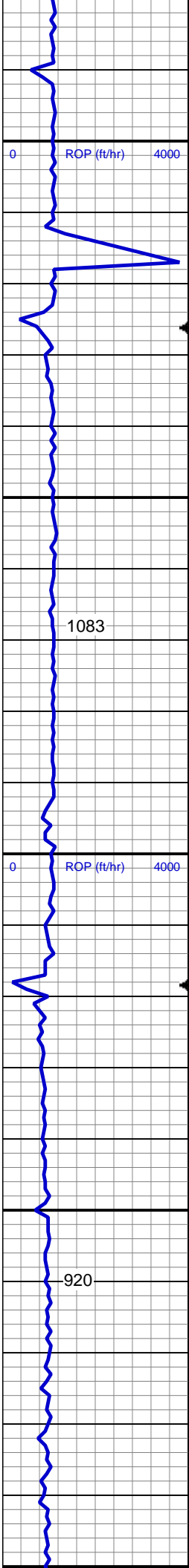
MD: 1,496'
Inclination: 0.7 °
Azimuth: 236.27 °
TVD: 1,495.96'
VS: -6.79'

CLYST: lt gy, sft, sb blkly, sl slty, non calc;
SHY SS: lt gy-gy, pty s&p, sft-mod frm, vf gr-f gr, sb ang - sb rnd, mod w srt, arg cmt, sl calc

MD: 1,589'
Inclination: 0.53 °
Azimuth: 255.25 °
TVD: 1,588.96'
VS: -7.16'

SHY SS: lt-med gy, sft-mod frm, vf gr-f gr, sb ang - sb rnd, mod w srt, arg cmt, sl calc
CLYST: lt gry, sft, sub-blky, non calc
SLTY SH: lt-dk gy, mod frm, sb blkly-sb pty, gritty

MD: 1,682'



Inclination: 0.7 °
Azimuth: 267.56 °
TVD: 1,681.95'
VS: -7.24'

18u
C1: 100.0%
C2: 0.0%
C3: 0.0%
C4: 0.0%

22u

SHY SS: lt-med gy, sft-mod frm, vf gr-f gr, sb ang - sb rnd, mod w srt, arg cmt, sl calc CLYST: lt gry, sft, sub-blky, non calc SLTY SH: lt-dk gy, mod frm, sb blky-sb plty, gritty

MD: 1,774'
Inclination: 0.62 °
Azimuth: 267.73 °
TVD: 1,773.94'
VS: -7.23'

31u

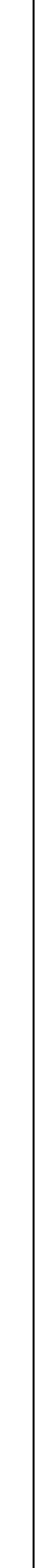
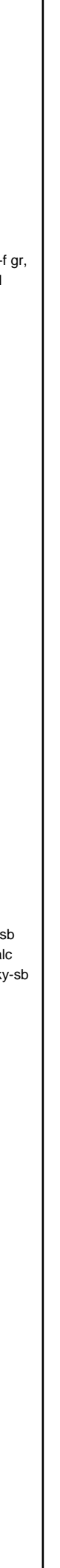
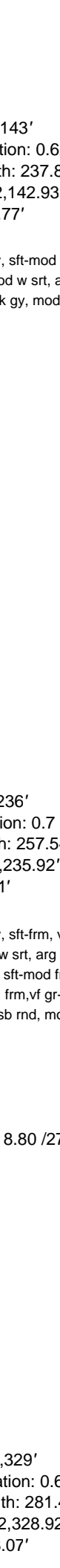
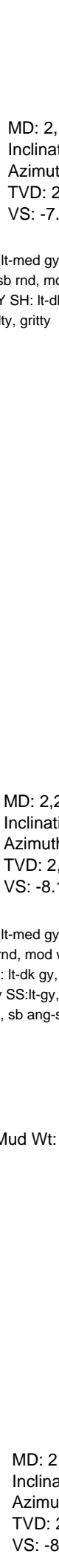
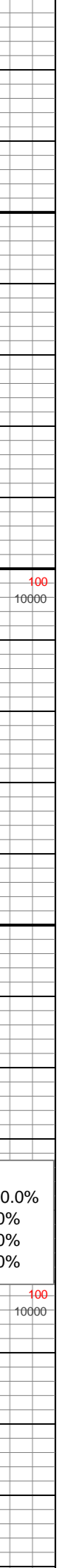
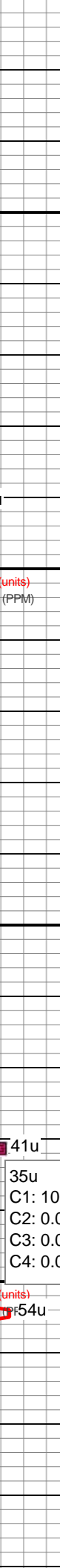
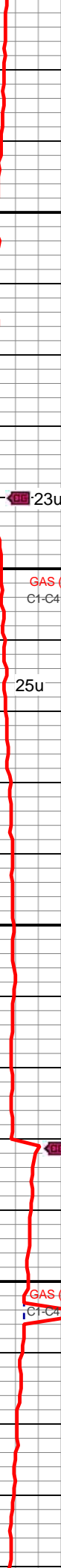
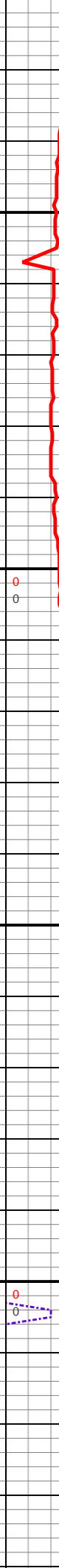
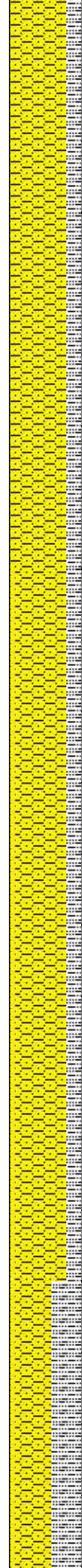
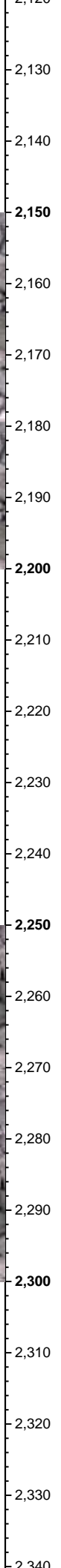
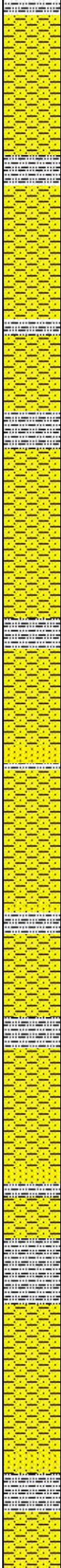
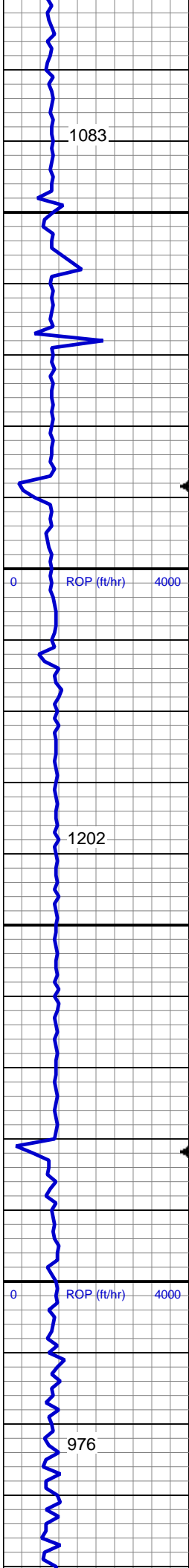
29u

SHY SS: lt-med gy, sft-mod frm, vf gr-f gr, sb ang - sb rnd, mod w srt, arg cmt, sl calc SLTY SH: lt-dk gy, mod frm, sb blky-sb plty, gritty

MD: 1,866'
Inclination: 0.44 °
Azimuth: 273.53 °
TVD: 1,865.94'
VS: -7.18'

26u

24u
C1: 100.0%
C2: 0.0%
C3: 0.0%
C4: 0.0%



MD: 2,143'
Inclination: 0.62 °
Azimuth: 237.85 °
TVD: 2,142.93'
VS: -7.77'

SHY SS: lt-med gy, sft-mod frm, vf gr-f gr,
sb ang - sb rnd, mod w srt, arg cmt, sl
calc SLTY SH: lt-dk gy, mod frm, sb
blky-sb plty, gritty

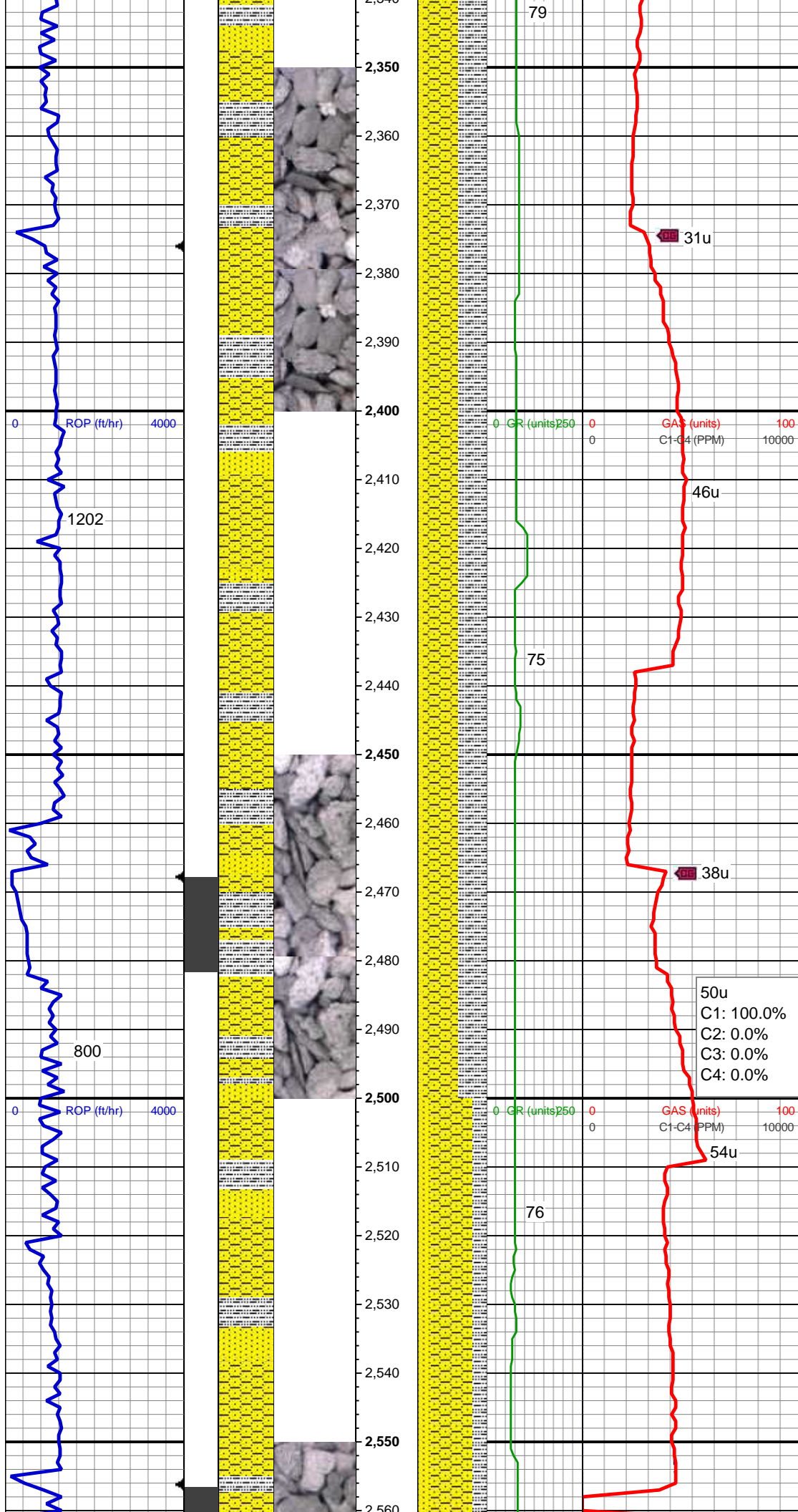
MD: 2,236'
Inclination: 0.7 °
Azimuth: 257.54 °
TVD: 2,235.92'
VS: -8.1'

SHY SS: lt-med gy, sft-frm, vf gr-f gr, sb
ang - sb rnd, mod w srt, arg cmt, sl calc
SLTY SH: lt-dk gy, sft-mod frm, sb blky-sb
plty, gritty SS:lt-gy, frm,vf gr-f gr, rare
med grns, sb ang-sb rnd, mod w srt

Mud Wt: 8.80 /27 Vis

35u
C1: 100.0%
C2: 0.0%
C3: 0.0%
C4: 0.0%

MD: 2,329'
Inclination: 0.62 °
Azimuth: 281.44 °
TVD: 2,328.92'
VS: -8.07'



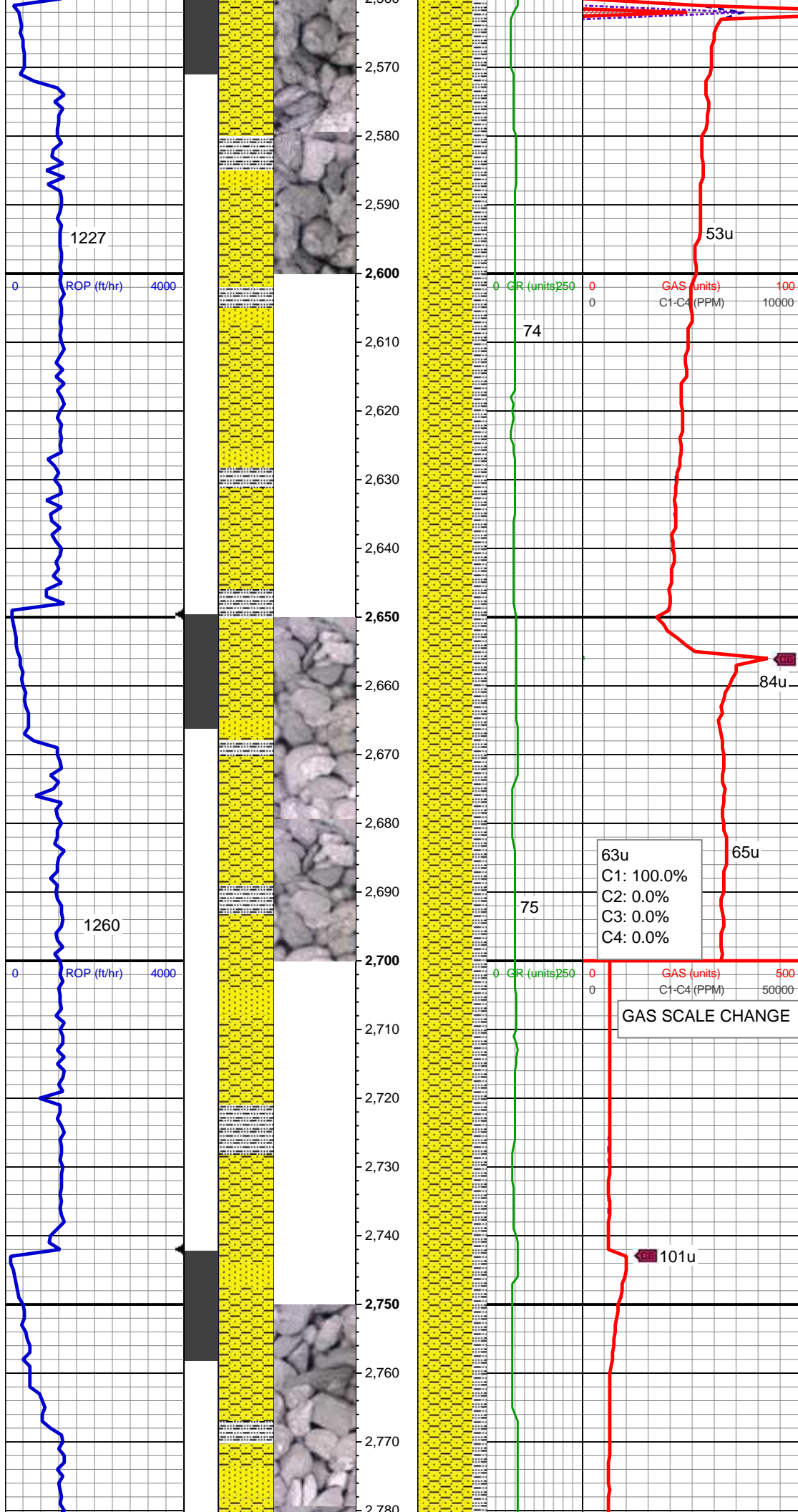
SHY SS: lt-med gy, sft-frm, vf gr-f gr, sb
ang - sb rnd, mod w srt, arg cmt, sl calc
SLTY SH: lt-dk gy, sft-mod frm, sb blkly-sb
plty, gritty SS:lt-gy, frm,vf gr-f gr, rare
med grns, sb ang-sb rnd, mod w srt

MD: 2,421'
Inclination: 0.44 °
Azimuth: 274.41 °
TVD: 2,420.91'
VS: -7.89'

SHY SS: lt-med gy, sft-frm, vf gr-f gr, sb
ang - sb rnd, mod w srt, arg cmt, sl calc
SLTY SH: lt-dk gy, sft-mod frm, sb blkly-sb
plty, gritty SS:lt-gy, frm,vf gr-f gr, rare
med grns, sb ang-sb rnd, mod w srt

MD: 2,512'
Inclination: 2.81 °
Azimuth: 251.03 °
TVD: 2,511.87'
VS: -8.45'

SHY SS: lt-med gy, sft-frm, vf gr-f gr, sb
ang - sb rnd, mod w srt, arg cmt, sl calc
SLTY SH: lt-dk gy, sft-mod frm, sb blkly-sb
plty, gritty SS:lt-gy, frm,vf gr-f gr, rare
med grns, sb ang-sb rnd, mod w srt

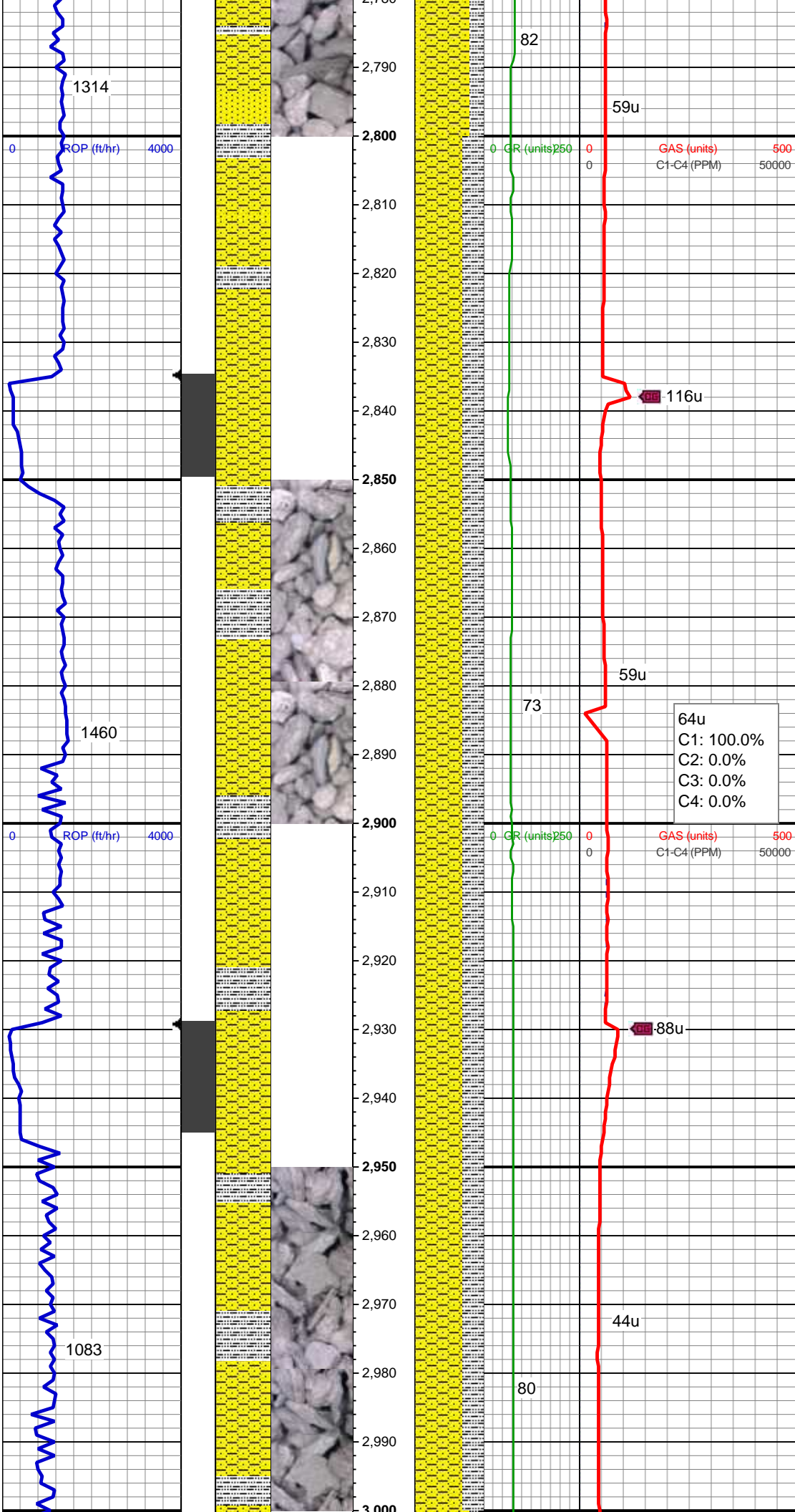


MD: 2,606'
Inclination: 4.92 °
Azimuth: 236.8 °
TVD: 2,605.65'
VS: -11.09'

SHY SS: lt-med gy, sft-frm, vf gr-f gr, sb ang - sb rnd, mod w srt, arg cmt, sl calc
SLTY SH: lt-dk gy, sft-mod frm, sb blk-y-sb plty, gritty SS:lt-gy, frm,vf gr-f gr, rare med grns, sb ang-sb rnd, mod w srt

MD: 2,699'
Inclination: 7.39 °
Azimuth: 225.55 °
TVD: 2,698.11'
VS: -17.03'

SHY SS: lt-med gy, sft-frm, vf gr-f gr, sb ang - sb rnd, mod w srt, arg cmt, sl calc
SLTY SH: lt-dk gy, sft-mod frm, sb blk-y-sb plty, gritty SS:lt-gy, frm,vf gr-f gr, rare med grns, sb ang-sb rnd, mod w srt



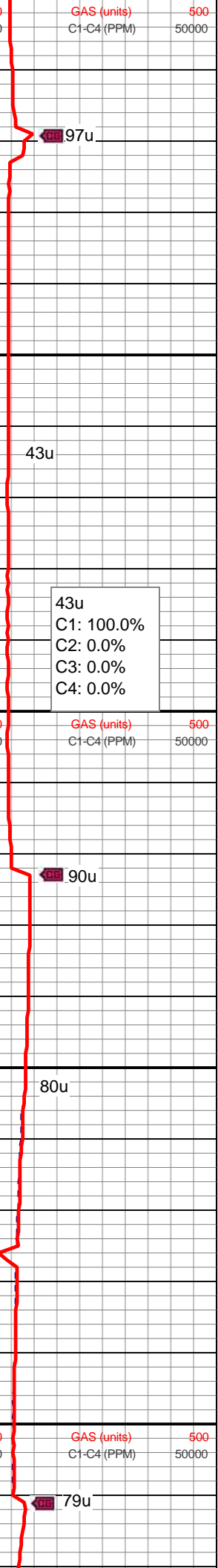
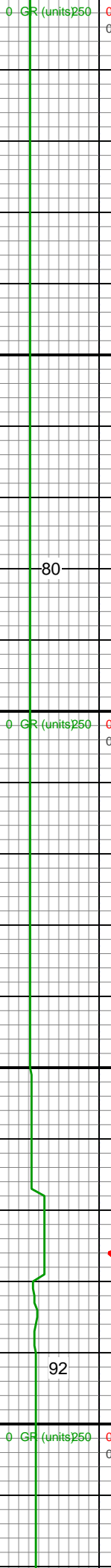
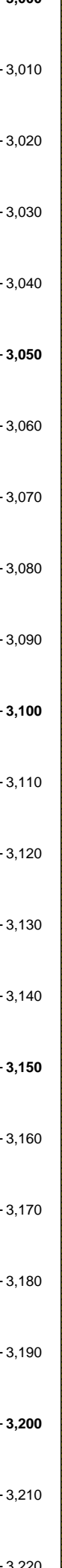
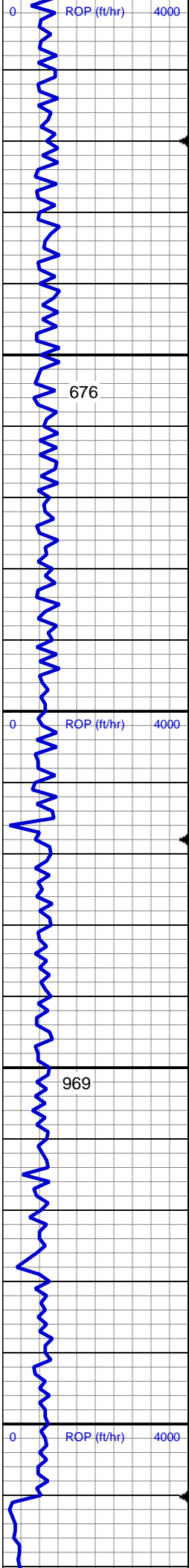
MD: 2,791'
Inclination: 9.32 °
Azimuth: 219.75 °
TVD: 2,789.13'
VS: -26.38'

SHY SS: lt-med gy, sft frm, vf gr-f gr, sb
ang - sb rnd, mod w srt, arg cmt, sl calc
SLTY SH: lt-dk gy, sft-mod frm, sb blk-y-sb
pity, gritty

MD: 2,884'
Inclination: 11.26 °
Azimuth: 213.42 °
TVD: 2,880.64'
VS: -39.18'

SHY SS: lt-med gy, sft frm, vf gr-f gr, sb
ang - sb rnd, mod w srt, arg cmt, sl calc
SLTY SH: lt-dk gy, sft-mod frm, sb blk-y-sb
pity, gritty

MD: 2,978'
Inclination: 13.1 °
Azimuth: 208.14 °
TVD: 2,972.52'
VS: -55.64'



SHY SS: lt-med gy, sft-frm, vf gr-f gr, sb
ang - sb rnd, mod w srt, arg cmt, sl calc
SLTY SH: lt-dk gy, sft-mod frm, sb blk-y-sb
ppty, gritty

Mud Wt: 8.85 /28 Vis

MD: 3,072'
Inclination: 12.75 °
Azimuth: 206.56 °
TVD: 3,064.14'
VS: -73.74'

43u
C1: 100.0%
C2: 0.0%
C3: 0.0%
C4: 0.0%

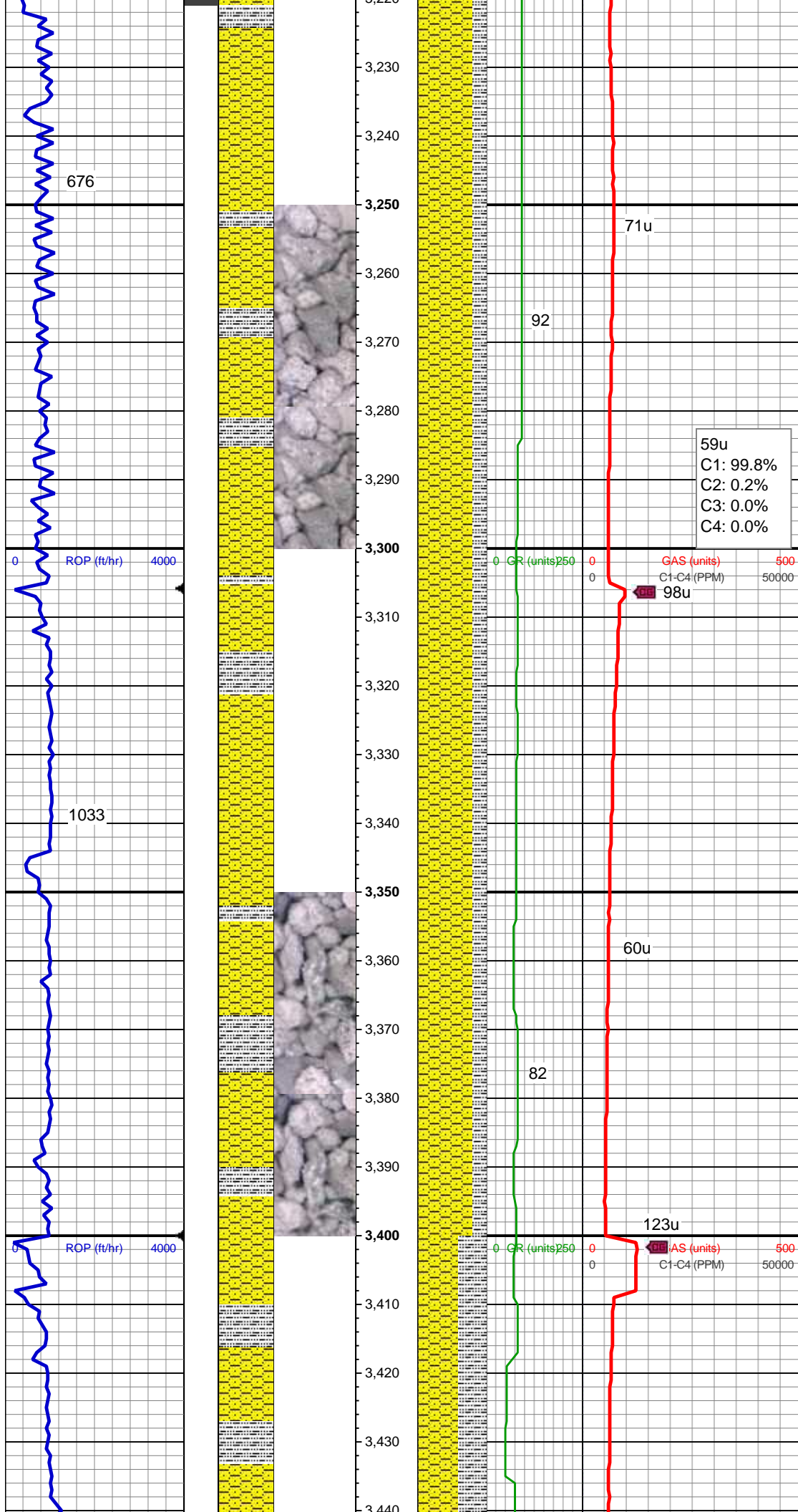
SHY SS: lt-med gy, sft-frm, vf gr-f gr, sb
ang - sb rnd, mod w srt, arg cmt, sl calc
SLTY SH: lt-dk gy, sft-mod frm, sb blk-y-sb
ppty, gritty

MD: 3,166'
Inclination: 11.08 °
Azimuth: 200.59 °
TVD: 3,156.11'
VS: -91.01'

80u

92

79u



SHY SS: lt-med gy, sft frm, vf gr-f gr, sb
ang - sb rnd, mod w srt, arg cmt, sl calc
SLTY SH: lt-dk gy, sft-mod frm, sb blk-y-sb
plty, gritty

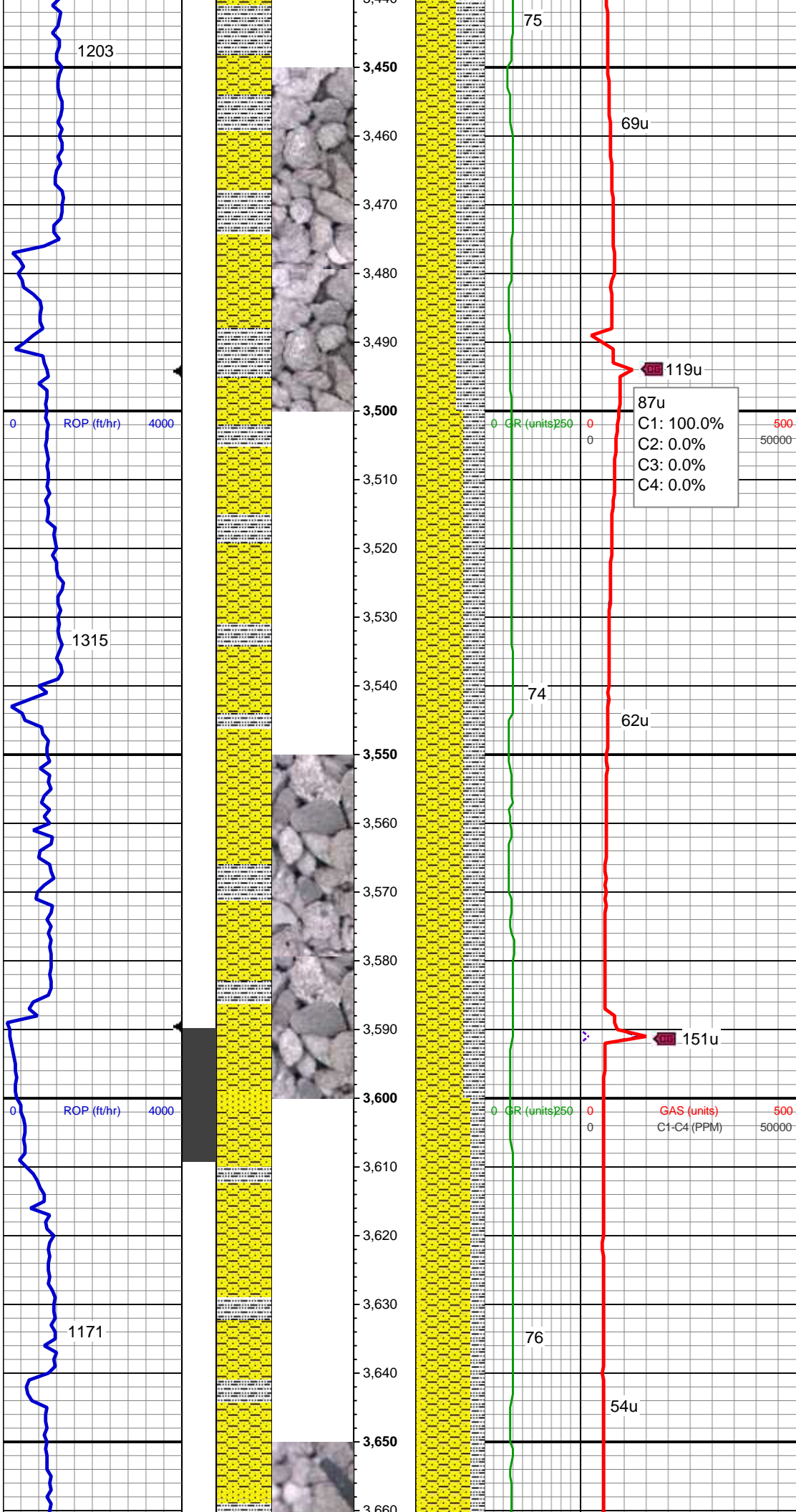
MD: 3,261'
Inclination: 11.17 °
Azimuth: 204.1 °
TVD: 3,249.33'
VS: -107.54'

SHY SS: lt-med gy, sft frm, vf gr-f gr, sb
ang - sb rnd, mod w srt, arg cmt, sl calc
SLTY SH: lt-dk gy, sft-mod frm, sb blk-y-sb
plty, gritty

MD: 3,355'
Inclination: 11.17 °
Azimuth: 204.98 °
TVD: 3,341.55'
VS: -123.65'

Mud Wt: 8.90 /28 Vis

SHY SS: lt-med gy, sft frm, vf gr-f gr, sb
ang - sb rnd, mod w srt, arg cmt, sl calc
SLTY SH: lt-dk gy, mod frm, sb blk-y-sb
plty, gritty



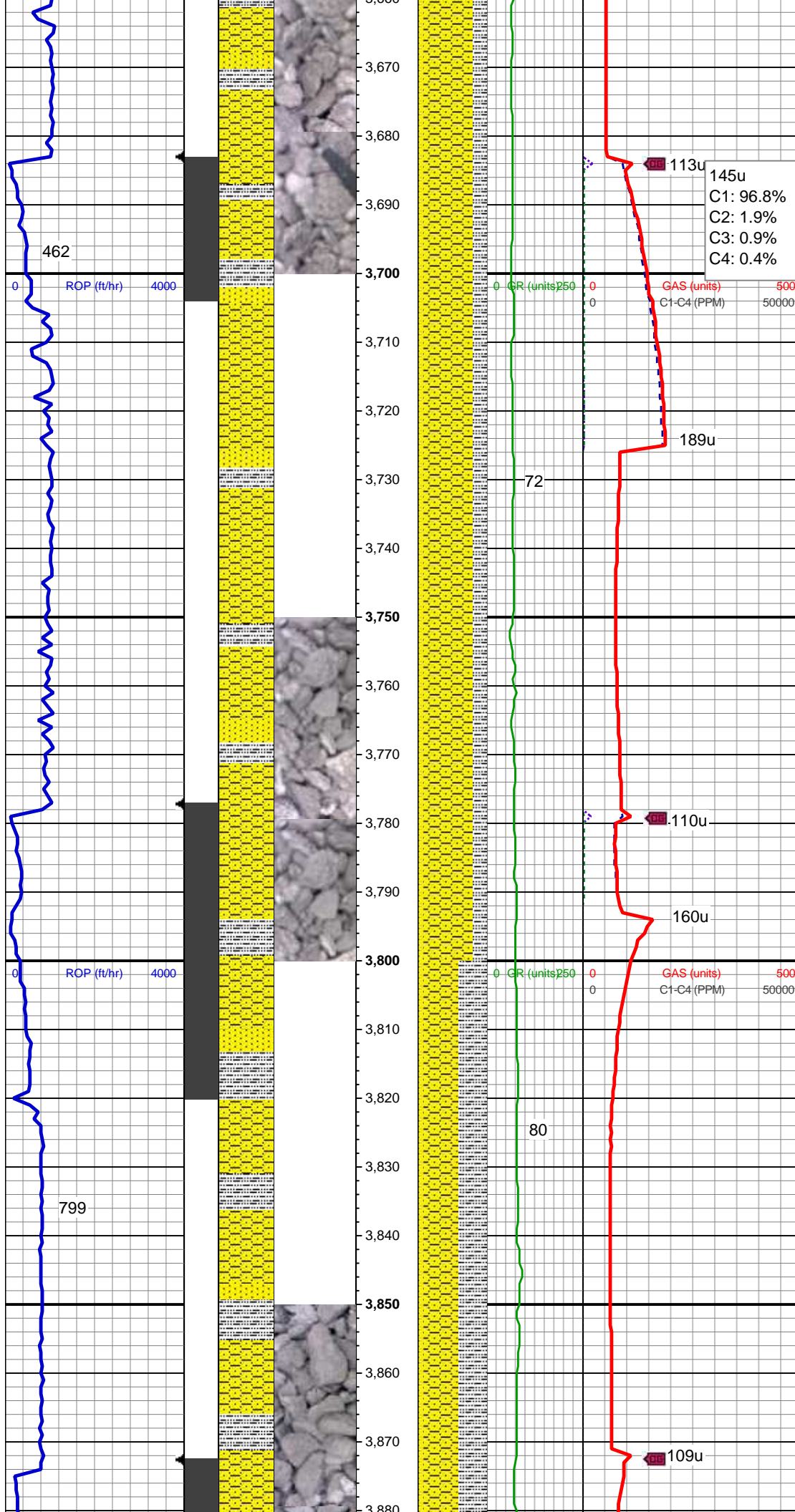
MD: 3,450'
Inclination: 11.87 °
Azimuth: 204.63 °
TVD: 3,434.63'
VS: -140.4'

MD: 3,545'
Inclination: 12.49 °
Azimuth: 204.28 °
TVD: 3,527.5'
VS: -158.15'

SHY SS: lt-med gy, sft-frm, vf gr-f gr, sb
ang - sb rnd, mod w srt, arg cmt, sl calc
SLTY SH: lt-dk gy, mod frm, sb blkly-sb
plty, gritty

MD: 3,639'
Inclination: 10.55 °
Azimuth: 196.54 °
TVD: 3,619.6'
VS: -175.27'

SHY SS: lt-med gy, sft-frm, vf gr-f gr, sb
ang - sb rnd, mod w srt, arg cmt, sl calc
SLTY SH: lt-dk gy, sft-mod frm, sb blkly-sb



ply, gritty SS:lt-gy, s&p in pt, frm,vf gr-f
gr, rare med grns, sb ang-sb rnd, mod w
srt

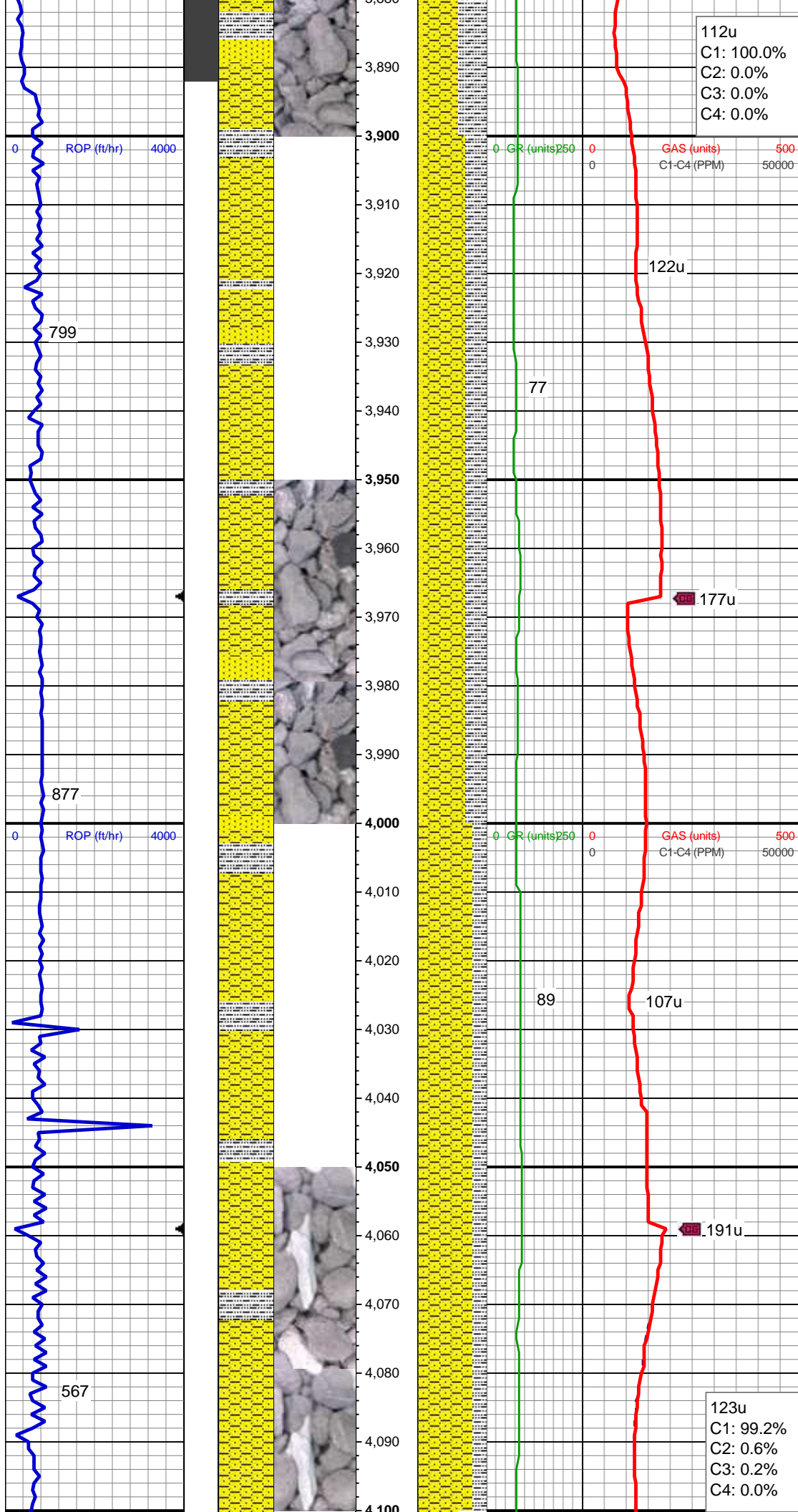
Mud Wt: 8.85 /29 Vis

MD: 3,734'
Inclination: 7.91 °
Azimuth: 191.44 °
TVD: 3,713.37'
VS: -189.78'

SHY SS: lt-med gy, sft-frm, vf gr-f gr, sb
ang - sb rnd, mod w srt, arg cmt, sl calc
SLTY SH: lt-dk gy, sft-mod frm, sb blk-y-sb
ply, gritty SS:lt-gy, s&p in pt, frm,vf gr-f
gr, rare med grns, sb ang-sb rnd, mod w
srt

MD: 3,828'
Inclination: 6.33 °
Azimuth: 220.98 °
TVD: 3,806.67'
VS: -199.75'

SHY SS: lt-med gy, sft-frm, vf gr-f gr, sb
ang - sb rnd, mod w srt, arg cmt, sl calc
SLTY SH: lt-dk gy, sft-mod frm, sb blk-y-sb
ply, gritty SS:lt-gy, s&p in pt, frm,vf gr-f
gr, rare med grns, sb ang-sb rnd, mod w
srt



112u
C1: 100.0%
C2: 0.0%
C3: 0.0%
C4: 0.0%

MD: 3,922'
Inclination: 5.54 °
Azimuth: 199.35 °
TVD: 3,900.18'
VS: -207.66'

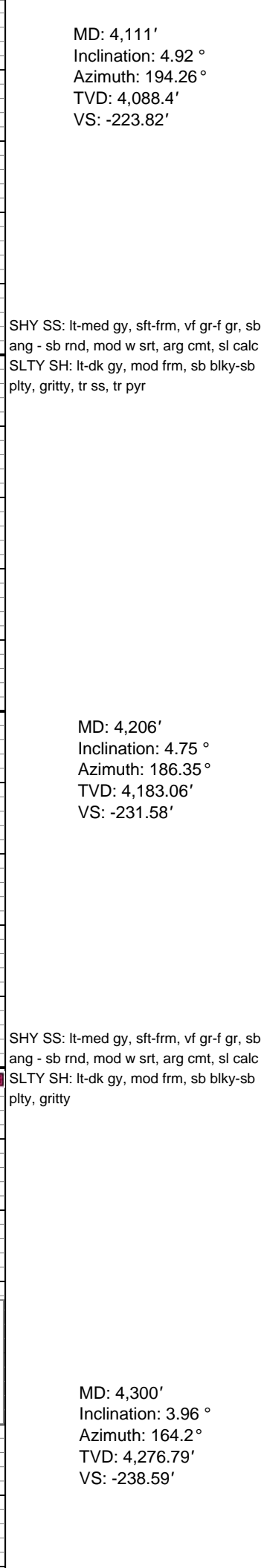
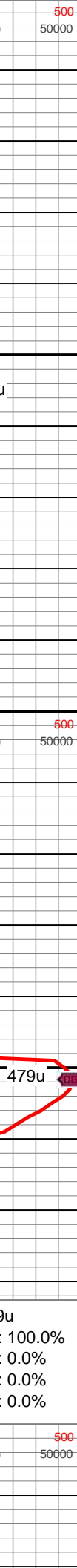
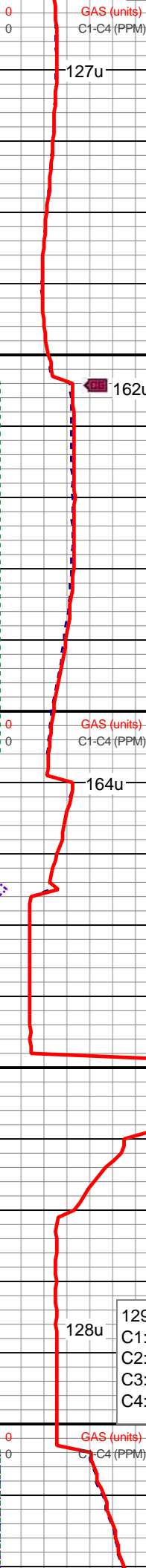
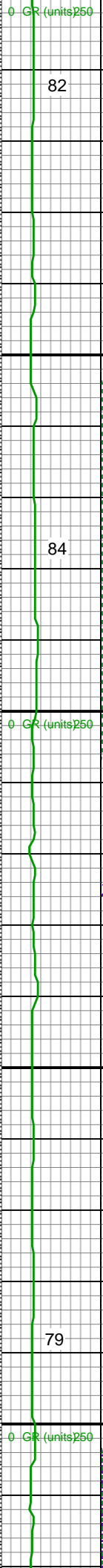
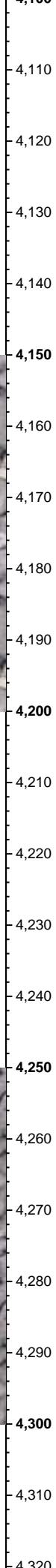
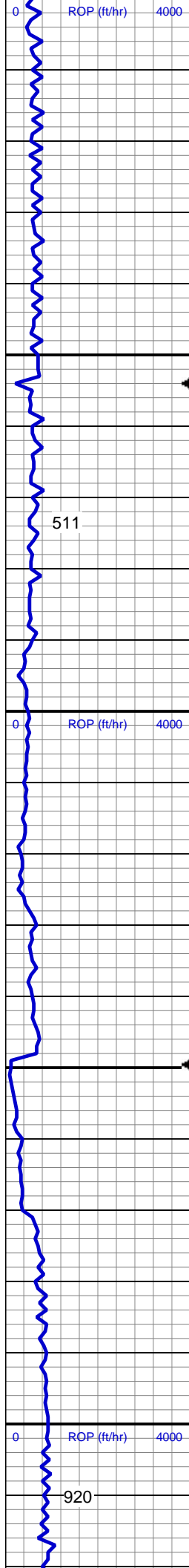
SHY SS: lt-med gy, sft-frm, vf gr-f gr, sb ang - sb rnd, mod w srt, arg cmt, sl calc
SLTY SH: lt-dk gy, sft-mod frm, sb blk-y-sb pty, gritty SS:lt-gy, s&p in pt, frm,vf gr-f gr, rare med grns, sb ang-sb rnd, mod w srt

Mud Wt: 8.85 /29 Vis

MD: 4,016'
Inclination: 5.19 °
Azimuth: 195.84 °
TVD: 3,993.76'
VS: -215.87'

SHY SS: lt-med gy, sft-frm, vf gr-f gr, sb ang - sb rnd, mod w srt, arg cmt, sl calc
SLTY SH: lt-dk gy, mod frm, sb blk-y-sb pty, gritty, tr ss, tr pyr

123u
C1: 99.2%
C2: 0.6%
C3: 0.2%
C4: 0.0%



MD: 4,111'
Inclination: 4.92 °
Azimuth: 194.26 °
TVD: 4,088.4'
VS: -223.82'

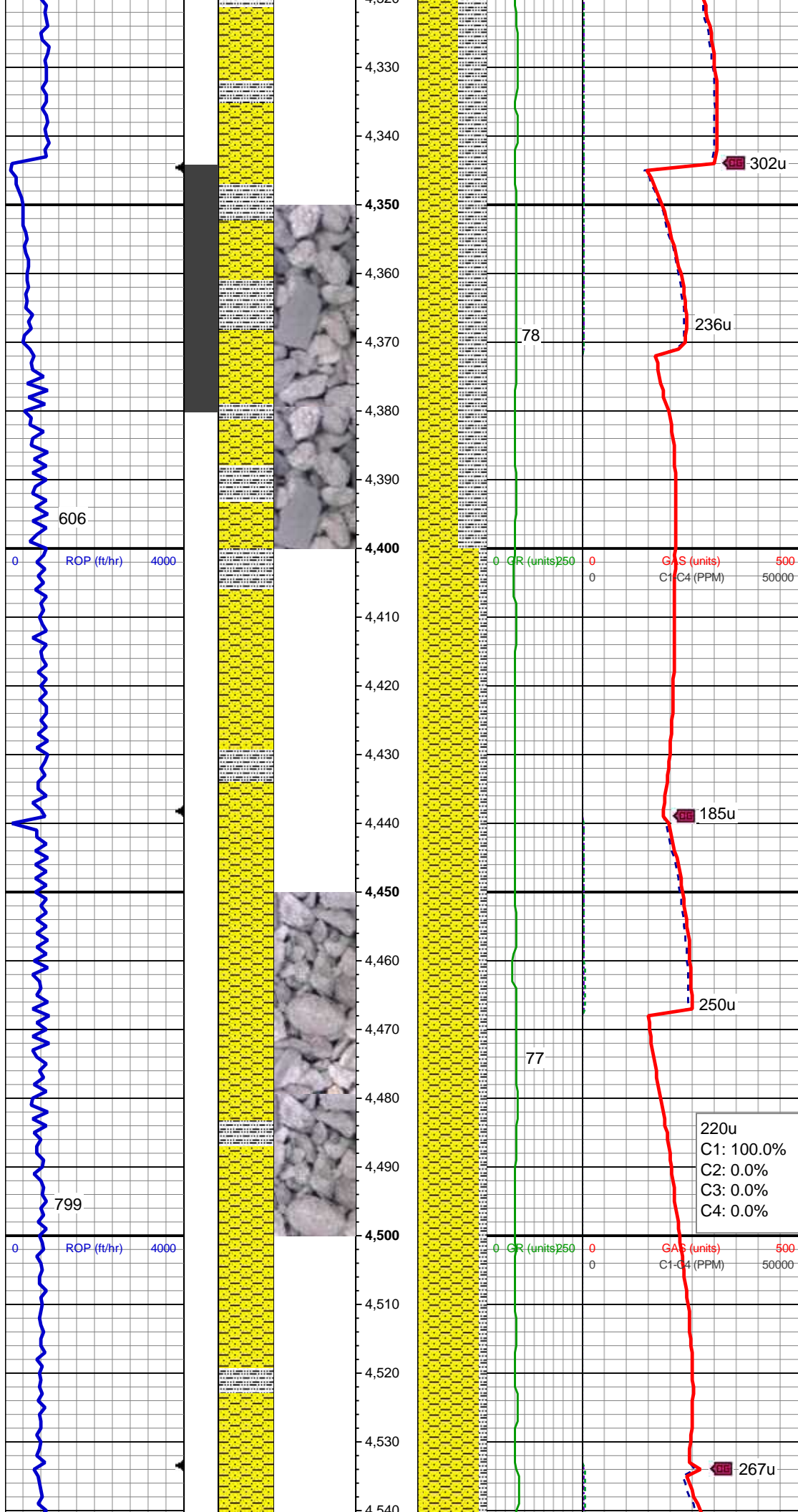
SHY SS: lt-med gy, sft frm, vf gr-f gr, sb ang - sb rnd, mod w srt, arg cmt, sl calc
SLTY SH: lt-dk gy, mod frm, sb blk-y-sb pty, gritty, tr ss, tr pyr

MD: 4,206'
Inclination: 4.75 °
Azimuth: 186.35 °
TVD: 4,183.06'
VS: -231.58'

SHY SS: lt-med gy, sft frm, vf gr-f gr, sb ang - sb rnd, mod w srt, arg cmt, sl calc
SLTY SH: lt-dk gy, mod frm, sb blk-y-sb pty, gritty

MD: 4,300'
Inclination: 3.96 °
Azimuth: 164.2 °
TVD: 4,276.79'
VS: -238.59'

129u
C1: 100.0%
C2: 0.0%
C3: 0.0%
C4: 0.0%



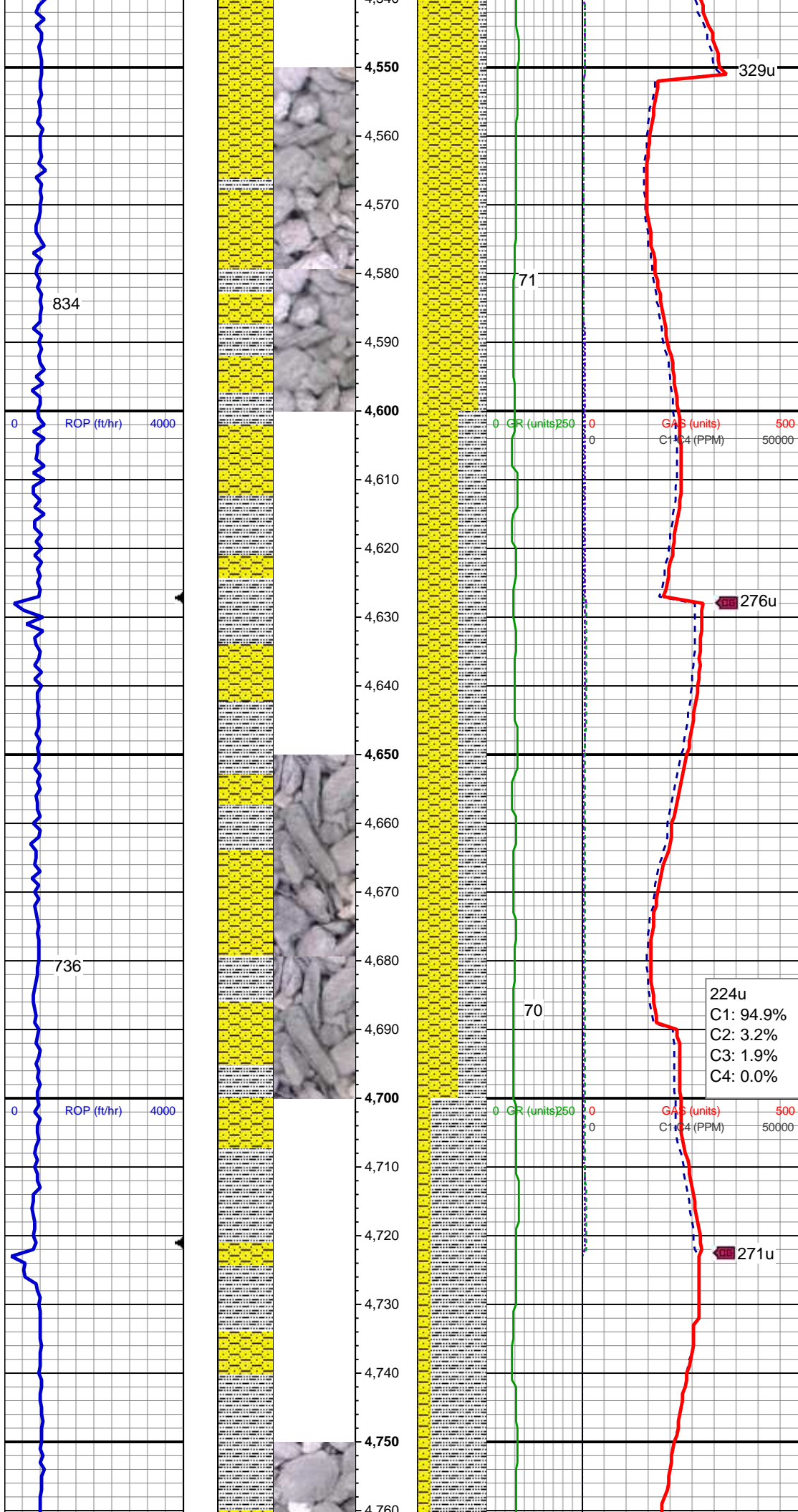
SHY SS: lt-med gy, sft frm, vf gr-f gr, sb ang - sb rnd, mod w srt, arg cmt, sl calc
SLTY SH: lt-dk gy, mod frm, sb blk-y-sb plty, gritty

MD: 4,395'
Inclination: 0.26 °
Azimuth: 214.82 °
TVD: 4,371.71'
VS: -241.96'

SHY SS: lt-med gy, sft frm, vf gr-f gr, sb ang - sb rnd, mod w srt, arg cmt, sl calc
SLTY SH: lt-dk gy, sft-mod frm, sb blk-y-sb plty, gritty
SS: lt-gy, s&p in pt, frm, vf gr-f gr, rare med grns, sb ang-sb rnd, mod w srt

MD: 4,489'
Inclination: 0.7 °
Azimuth: 338.57 °
TVD: 4,465.71'
VS: -241.58'

220u
C1: 100.0%
C2: 0.0%
C3: 0.0%
C4: 0.0%



SHY SS: lt-med gy, sft-frm, vf gr-f gr, sb ang - sb rnd, mod w srt, arg cmt, sl calc
SLTY SH: lt-dk gy, sft-mod frm, sb blk-y-sb pty, gritty SS:lt-gy, s&p in pt, frm,vf gr-f gr, rare med grns, sb ang-sb rnd, mod w srt

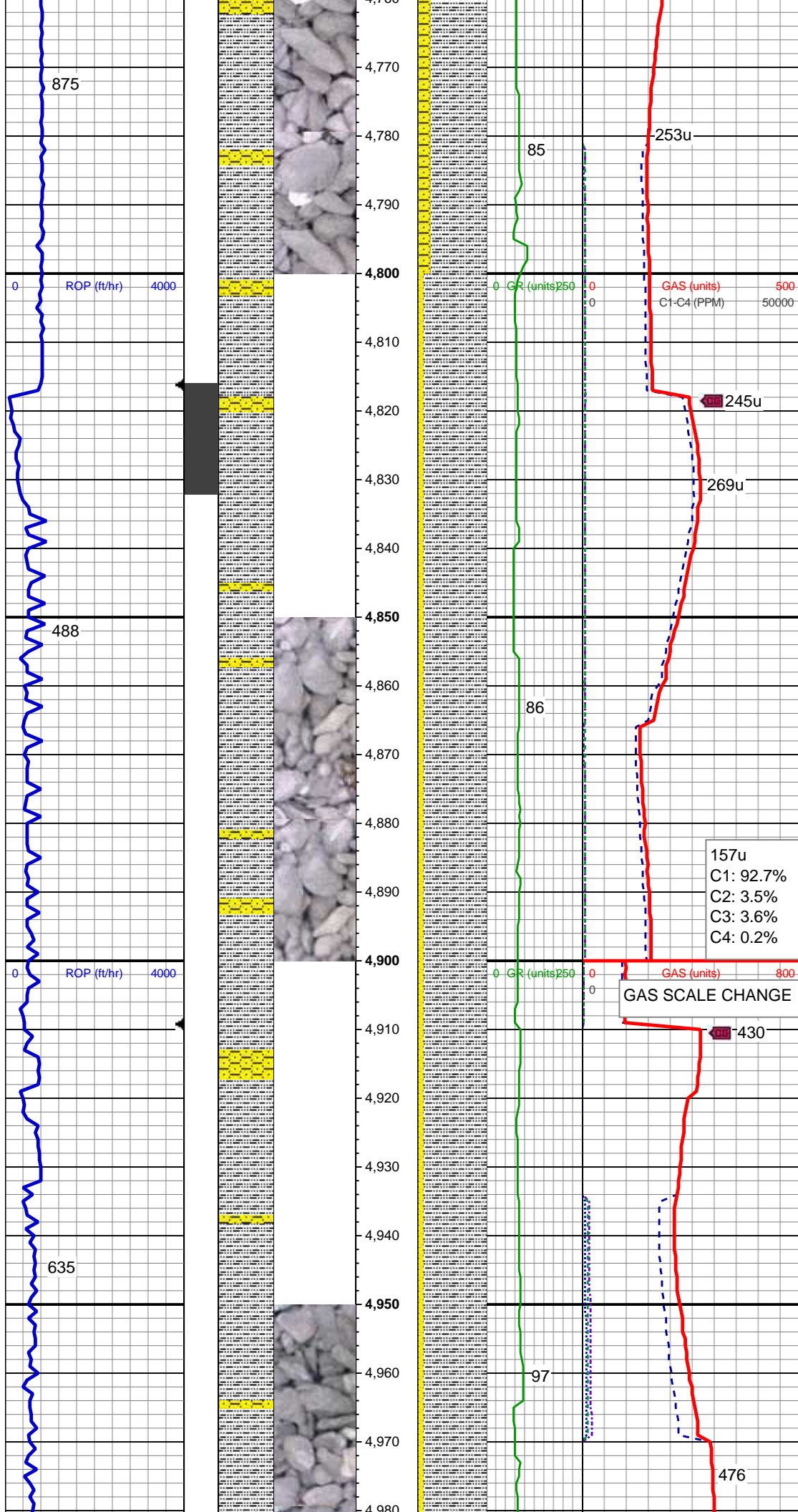
MD: 4,583'
Inclination: 1.14 °
Azimuth: 359.49 °
TVD: 4,559.7'
VS: -240.1'

SHY SS: lt-med gy, sft-frm, vf gr-f gr, sb ang - sb rnd, mod w srt, arg cmt, sl calc
SLTY SH: lt-dk gy, mod frm, sb blk-y-sb pty, gritty

Mud Wt: 8.95 /30 Vis

MD: 4,678'
Inclination: 1.58 °
Azimuth: 15.84 °
TVD: 4,654.67'
VS: -237.92'

SLTY SH: lt-dk gy, mod frm, sb blk-y-sb pty, gritty SHY SS: lt-med gy, sft-frm, vf gr-f gr, sb ang - sb rnd, mod w srt, arg cmt, sl calc



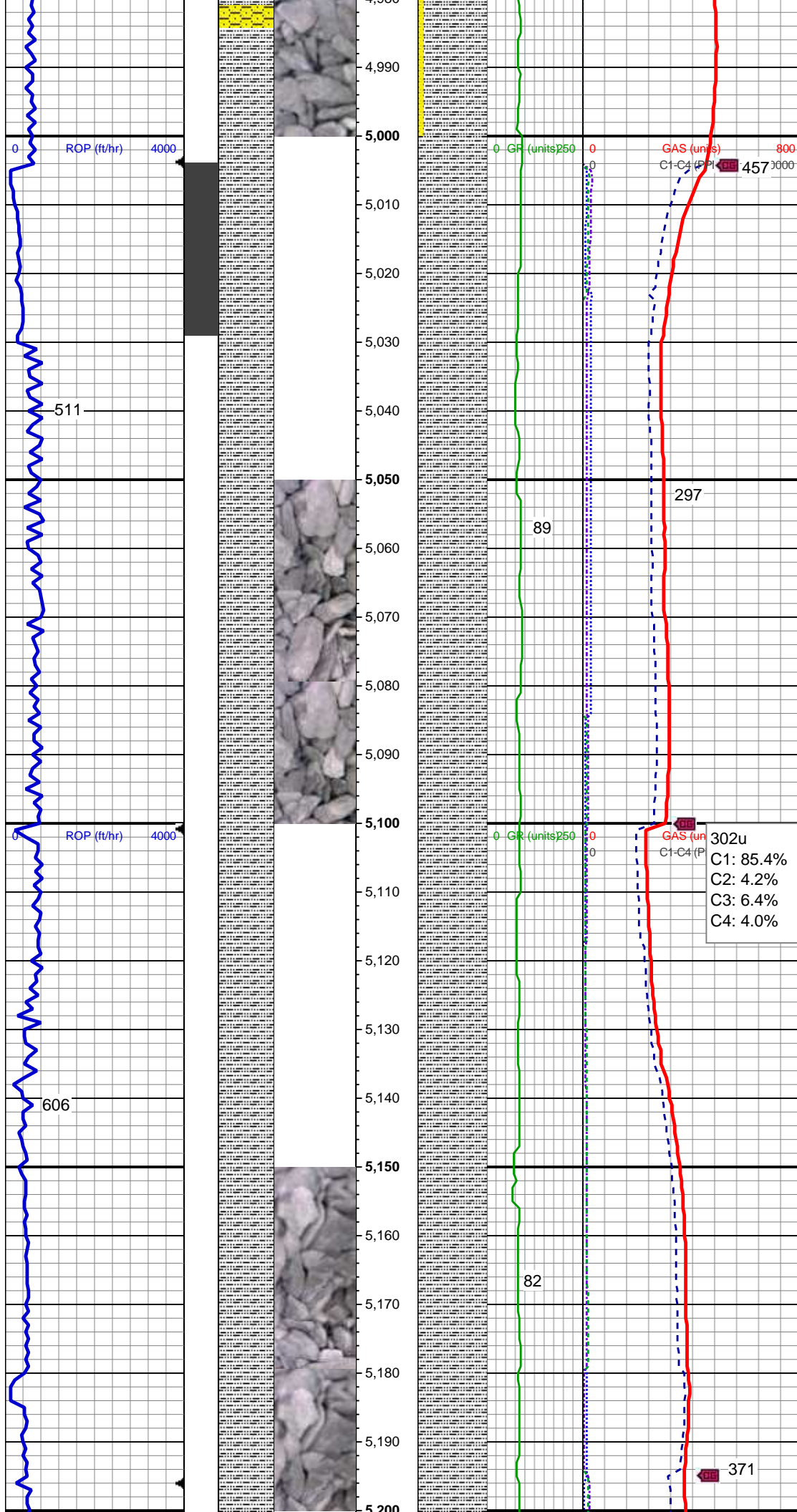
MD: 4,772'
Inclination: 2.02 °
Azimuth: 37.64 °
TVD: 4,748.63'
VS: -235.44'

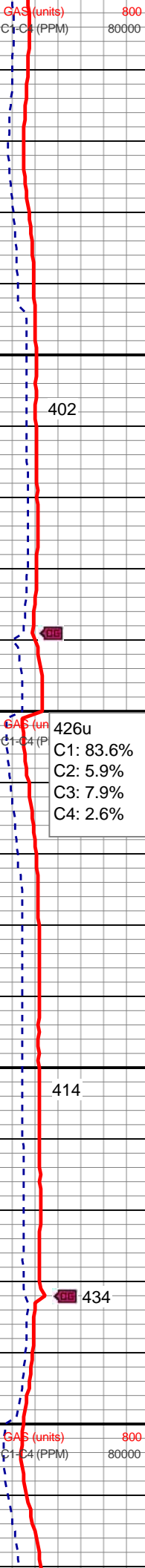
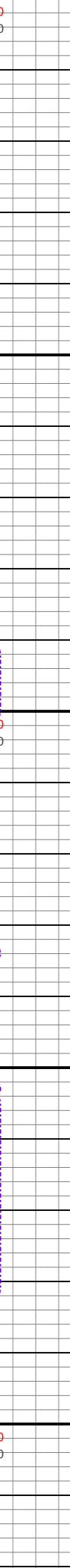
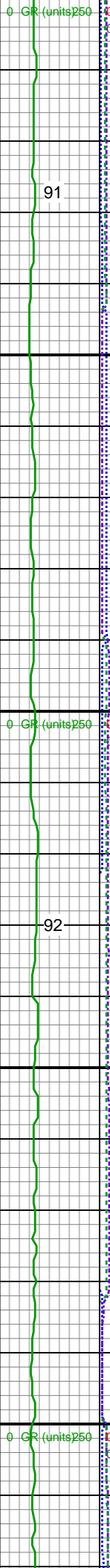
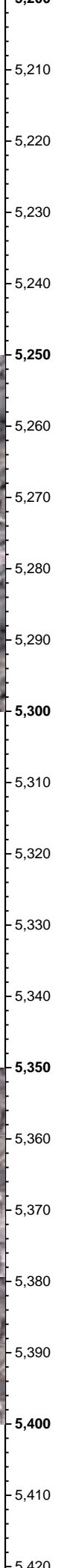
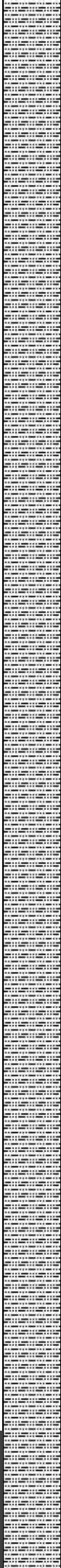
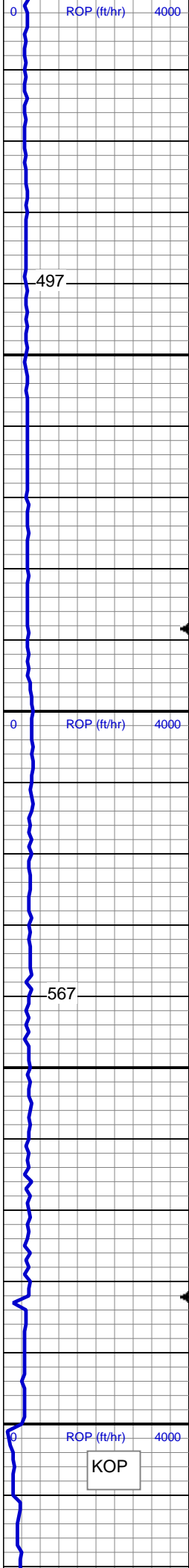
SLTY SH: lt-dk gy, mod frm, sb blk-y-sb
plty, gritty SHY SS: lt-med gy, sft-frm, vf
gr-f gr, sb ang - sb rnd, mod w srt, arg
cmt, sl calc

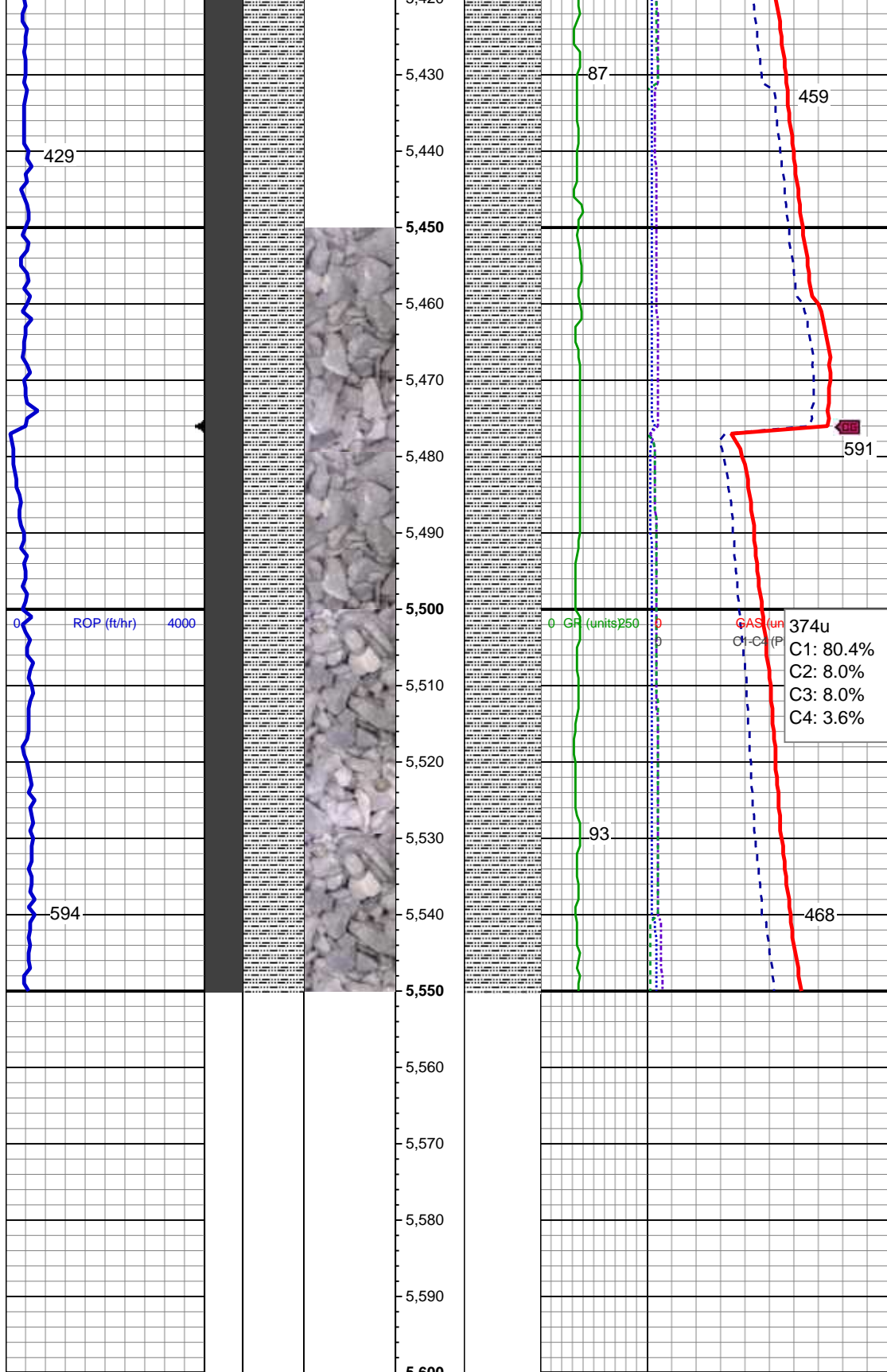
MD: 4,866'
Inclination: 0.7 °
Azimuth: 16.37 °
TVD: 4,842.6'
VS: -233.65'

SLTY SH: lt-dk gy, mod frm, sb blk-y-sb
plty, gritty SHY SS: lt-med gy, sft-frm, vf
gr-f gr, sb ang - sb rnd, mod w srt, arg
cmt, sl calc

MD: 4,961'
Inclination: 0.62 °
Azimuth: 33.94 °
TVD: 4,937.59'
VS: -232.69'







MD: 5,434'
Inclination: 2.2 °
Azimuth: 284.96 °
TVD: 5,410.26'
VS: -241'

SLTY SH: lt-dk gy, mod frm, sb blkly-sb
ply, gritty, rthy, silky, tr pyr

MD: 5,528'
Inclination: 8.44 °
Azimuth: 359.84 °
TVD: 5,503.88'
VS: -233.54'

LOG CONTINUES ON MPlot
Cutthroat LC28-77HNB(Horz)
THANK YOU FOR USING
COLUMBINE LOGGING