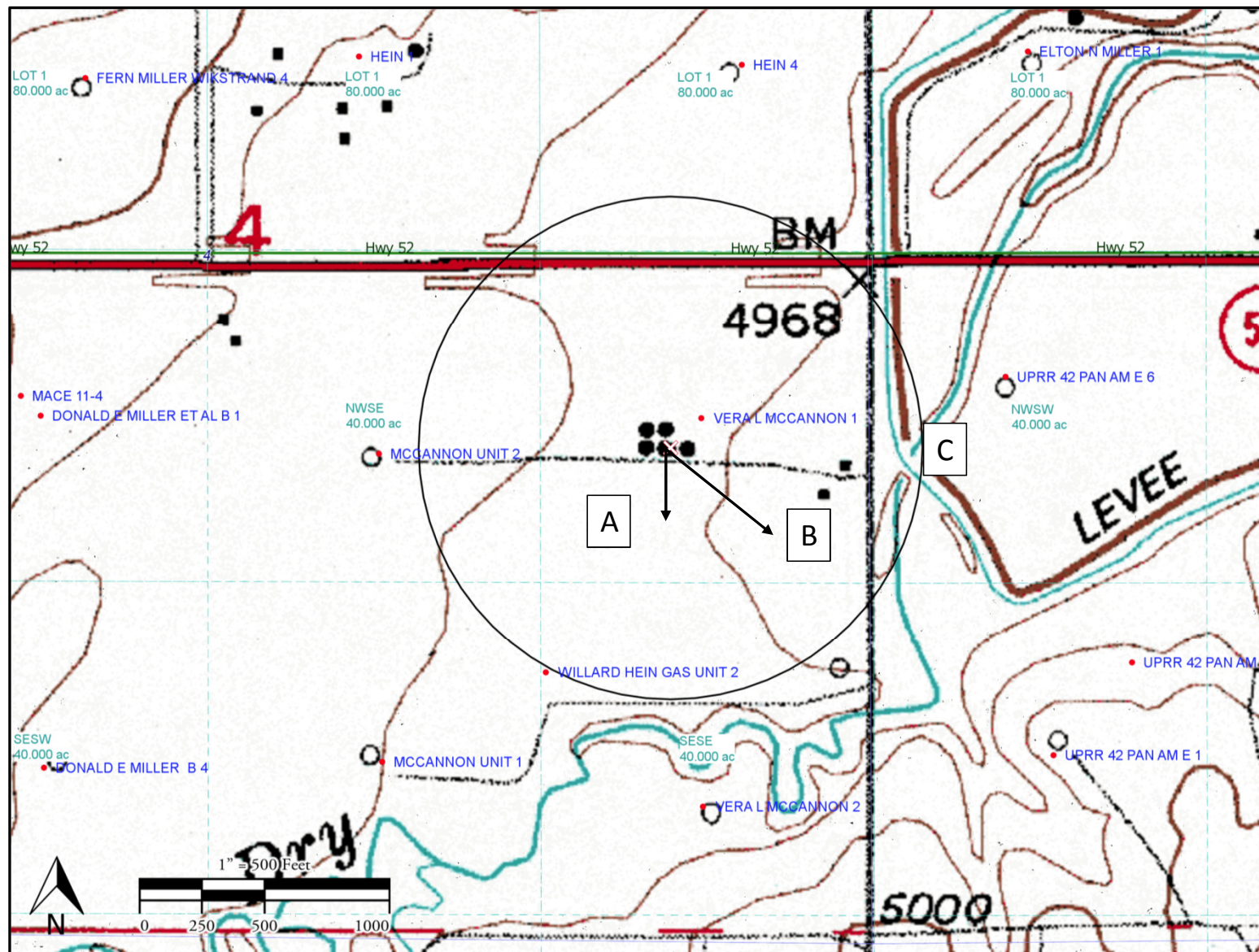


Measurements taken from
Facility #5:
(40.07789, -104.88913)



FACILITY #5

K. P. Kauffman Company, Inc.
Hydrology Map
NESE Sec 4-T1N-R67W
Weld County, CO

Water Features within 1,000 ft.

- A: Farmers Irrigation Ditch 162' (Not Shown in Topo)
- B: Irrigation Pond 321' (Not Shown in Topo)
- C: Farmers Irrigation Ditch 862'

