



Kerr-McGee Oil & Gas Onshore LP

A subsidiary of Anadarko Petroleum Corporation

1099 18th Street
Denver, CO 80202
720-929-6000

January 19, 2015

Matt Lepore
Director, Colorado Oil and Gas Conservation Commission
Department of Natural Resources
The Chancery Building
1120 Lincoln Street, Suite 801
Denver, CO 80203

Re: **30 Day Certification Letter - 318A.e**
JOKER 1N2-9HZ (COGCC DOC# 400769382)
Township 1 North, Range 65 West
Section 9: SESE
Unit Acreage: 160
Unit Spacing: 01N-65W-Sec 09 E2E2
Weld County, Colorado

Dear Director Lepore:

Kerr McGee Oil and Gas Onshore LP ("KMG") hereby certifies that KMG owns one hundred percent (100%) of the leasehold interest in the mineral rights in the proposed spacing unit. KMG hereby respectfully requests approval of this boundary well.

If you have any questions or issues regarding this permit, please contact Cheryl Light at (720) 929-6461.

Sincerely,

Kerr-McGee Oil and Gas Onshore LP

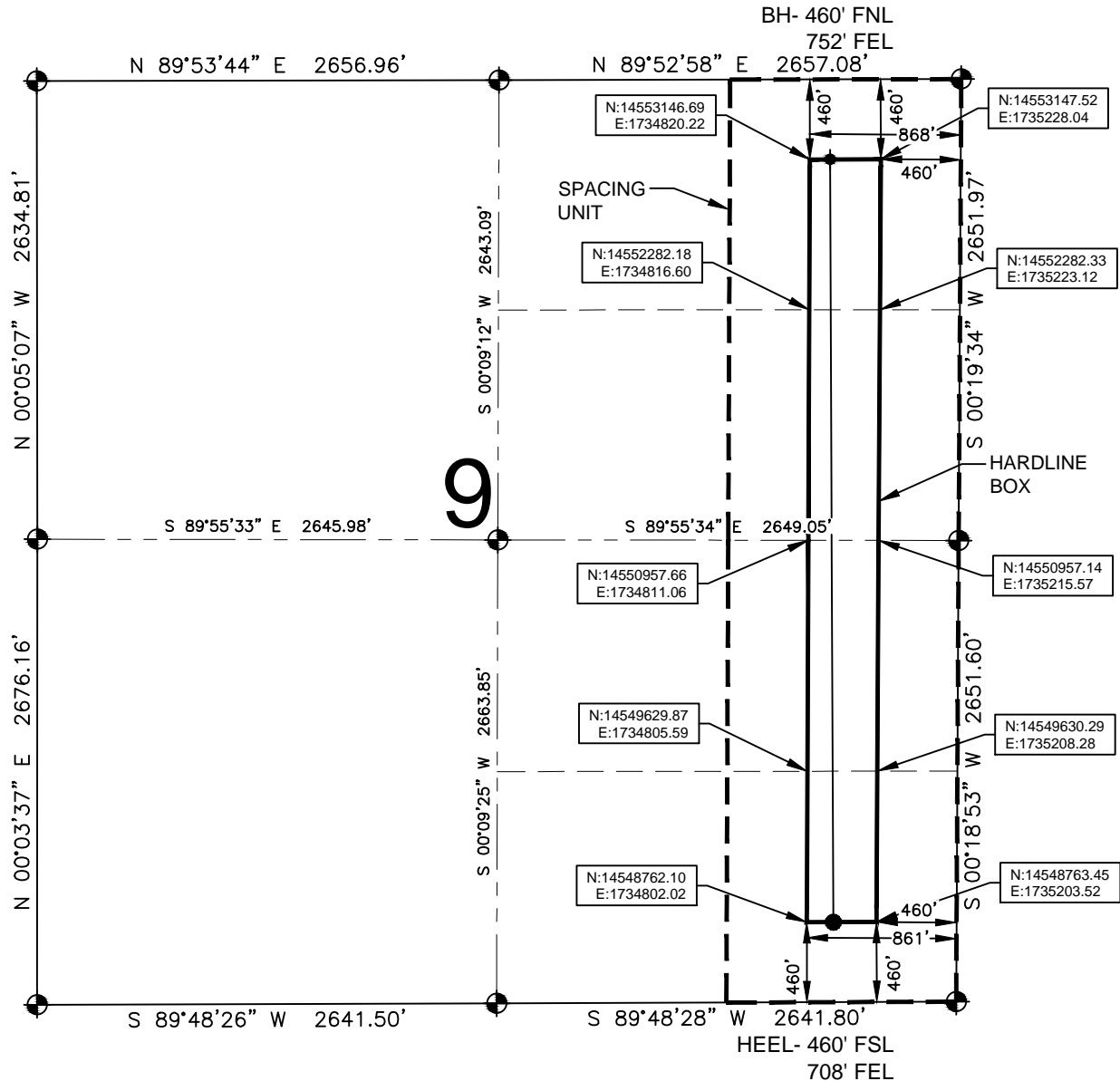
A blue ink signature of Craig Richardson, consisting of a stylized 'C' followed by a horizontal line.

Craig Richardson
Regulatory Analyst II

Enclosure

HARDLINE EXHIBIT: JOKER 1N2-9HZ

SECTION 9 TOWNSHIP 1 NORTH, RANGE 65 WEST, 6TH P.M.



LEGEND

- = EXISTING MONUMENT
- = PROPOSED HEEL
- ◆ = BOTTOM HOLE
- BH = BOTTOM HOLE

HEEL LOCATION

NAD83
 LATITUDE= 40.060003°
 LONGITUDE= 104.662127°
 LATITUDE= 40°03'36.012"
 LONGITUDE= 104°39'43.658"

QRT/QRT SECTIONS WITHIN PATH OF THE HARDLINE

NENE, SEC. 9
 SENE, SEC. 9
 NESE, SEC. 9
 SESE, SEC. 9

BOTTOM HOLE LOCATION

NAD83
 LATITUDE= 40.072044°
 LONGITUDE= 104.662136°
 LATITUDE= 40°04'19.358"
 LONGITUDE= 104°39'43.691"

AVAILABLE FOOTAGE

4384'

NOTES:

- THIS DOCUMENT IS NOT A LAND SURVEY PLAT OR IMPROVEMENT SURVEY PLAT. THIS DOCUMENT DOES NOT REFLECT A FIELD SURVEY. SECTION BREAKDOWN, MONUMENTATION AND HORIZONTAL POSITIONS SHOWN ARE BASED ON THE HEEL AND BOTTOM HOLE LOCATION PROVIDED BY ANADARKO PETROLEUM CORPORATION

PREPARED BY:



DRAWING DATE:
11-13-14
BY: SMF
CHECKED: TJN

HEEL LOCATION:
SE 1/4 SE 1/4,
SEC. 9, T1N, R65W, 6TH P.M.
WELD COUNTY, COLORADO

