



06/05/2014

VIA ELECTRONIC TRANSMITTAL

Colorado Oil and Gas Conservation Commission
Attn: Matt Lepore, Director
1120 Lincoln Street, Suite 801
Denver, CO 80203

RE: 30-Day Affidavit and Certification Letter

GP-Jackson #1-18-18: 465' FNL, 1305' FEL, Sec. 20-T5N-R65W, Weld County, Colorado
GP-Jackson #2-18-18: 477' FNL, 1305' FEL, Sec. 20-T5N-R65W, Weld County, Colorado
GP-Jackson #3-18-18: 489' FNL, 1305' FEL, Sec. 20-T5N-R65W, Weld County, Colorado
GP-Jackson #4-18-18: 501' FNL, 1305' FEL, Sec. 20-T5N-R65W, Weld County, Colorado
GP-Jackson #5-18-18: 513' FNL, 1305' FEL, Sec. 20-T5N-R65W, Weld County, Colorado

Dear Mr. Lepore,

Mineral Resources, Inc. (MRI) hereby certifies that thirty (30) day notice has been given to all owners in the proposed wellbore spacing unit in accordance with Rule 318A.e(6). The notices were sent on 03/01/14. MRI has received no objections to the subject well locations, proposed spacing units, or additional producing information from any owner as described in C.R.S. §34-60-103(7). The thirty (30) day objection period has expired. MRI respectfully requests that the Director approve the wells. Should you have any questions or concerns please contact the undersigned at 720-420-5719.

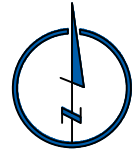
Sincerely,

Clayton L. Doke
Senior Engineer
Integrated Petroleum Technologies, Inc
Consultants to Mineral Resources, Inc

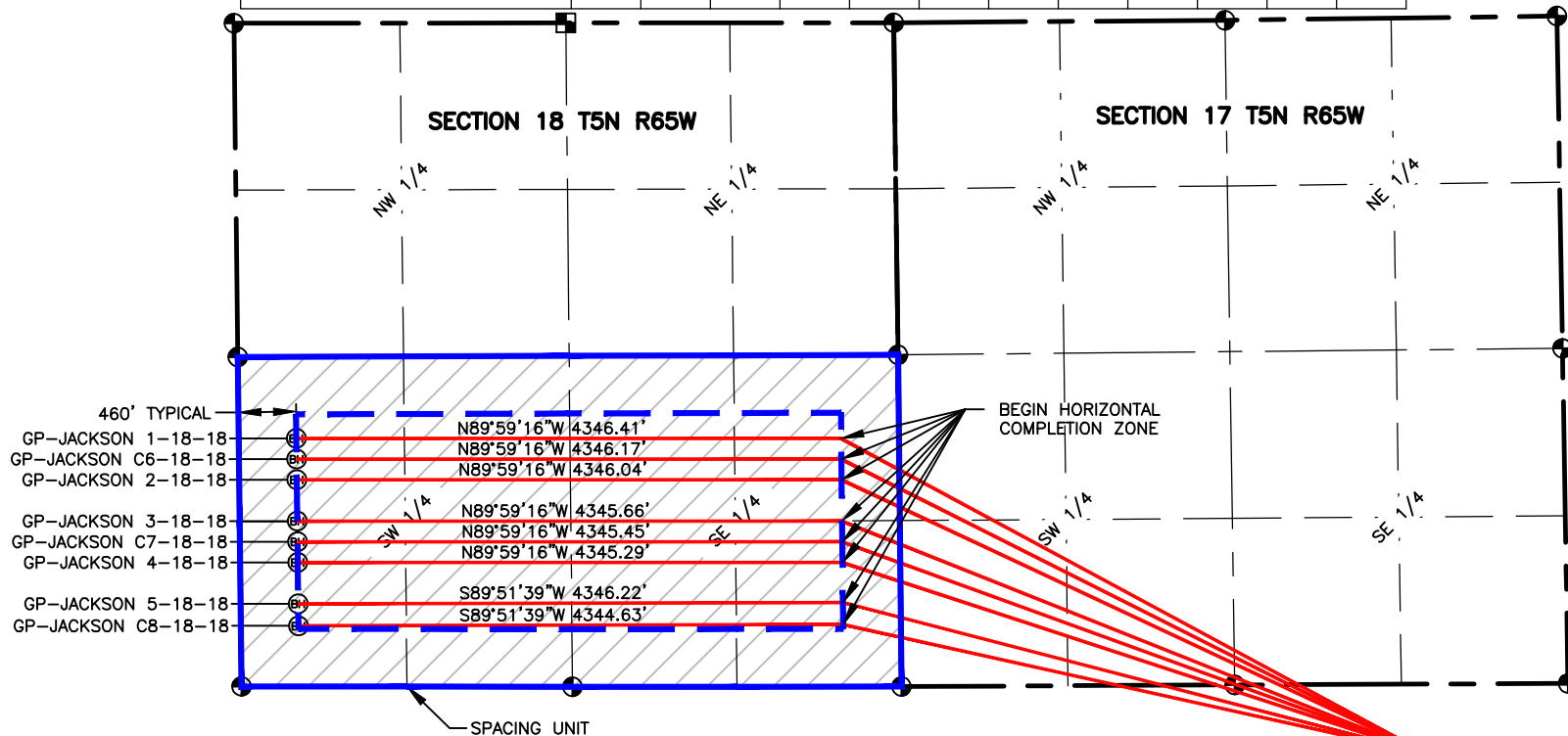
P:\Engineering\0211012.04\DRAWINGS\EXHIBITS\0211012-04PSUE-7.dwg, 7/24/2014 7:25:15 PM, KELVIN WIESE, LAMP RYNEARSON & ASSOCIATES

NAME: JACKSON
SPACING UNIT: S/2 SEC 18, T5N, R65W; UNIT ACREAGE: 320

WELL NAME	SURFACE LOCATION				BEGIN HORIZONTAL COMPLETION ZONE				END HORIZONTAL COMPLETION ZONE			
	DIST.	DIR.	DIST.	DIR.	DIST.	DIR.	DIST.	DIR.	DIST.	DIR.	DIST.	DIR.
GP-JACKSON 1-18-18	465'	FNL	1305'	FEL	1980'	FSL	460'	FEL	1980'	FSL	460'	FWL
GP-JACKSON C6-18-18	471'	FNL	1305'	FEL	1815'	FSL	460'	FEL	1815'	FSL	460'	FWL
GP-JACKSON 2-18-18	477'	FNL	1305'	FEL	1650'	FSL	460'	FEL	1650'	FSL	460'	FWL
GP-JACKSON 3-18-18	489'	FNL	1305'	FEL	1320'	FSL	460'	FEL	1320'	FSL	460'	FWL
GP-JACKSON C7-18-18	495'	FNL	1305'	FEL	1155'	FSL	460'	FEL	1155'	FSL	460'	FWL
GP-JACKSON 4-18-18	501'	FNL	1305'	FEL	990'	FSL	460'	FEL	990'	FSL	460'	FWL
GP-JACKSON 5-18-18	513'	FNL	1305'	FEL	671'	FSL	460'	FEL	660'	FSL	460'	FWL
GP-JACKSON C8-18-18	519'	FNL	1305'	FEL	495'	FSL	460'	FEL	484'	FSL	460'	FWL



0 1500
SCALE: 1"= 1500'
U.S. SURVEY FEET



LAMP RYNEARSON
& ASSOCIATES

4715 Innovation Drive 970.226.0342 | P
Fort Collins, CO 80525 970.226.0879 | F
www.LRA-Inc.com

Proposed Spacing Unit Exhibit
Greeley Directional Project
Jackson

LEGEND

- ALIQUOT CORNER
- BOTTOM HOLE
- COMPUTED ALIQUOT CORNER
- COMPUTED FROM GLO RECORDS

SECTION LINE
QUARTER SECTION LINE
SIXTEENTH LINE

drawn by
KJW

date
7/24/14

cogcc id
332837

project - task number
0211012.04

book and page

surface - location
NE/4, NE/4 SEC 20 T5N R65W

path\filename P:\Engineering\0211012.04\DRAWINGS\EXHIBITS\0211012-04PSUE-7.dwg