

## WELLBORE DIAGRAM

**Bayswater E&P LLC**  
**Walton 17-25**  
SENE Sec 25-T7N-R67W  
SHL: 1474' FNL, 1163' FEL  
BHL: 1474' FNL, 1163' FEL  
Weld County CO  
05-123-34767

Directions: WCR 78 AND WCR 23, East 1.0 miles, south into.

NW well on pad

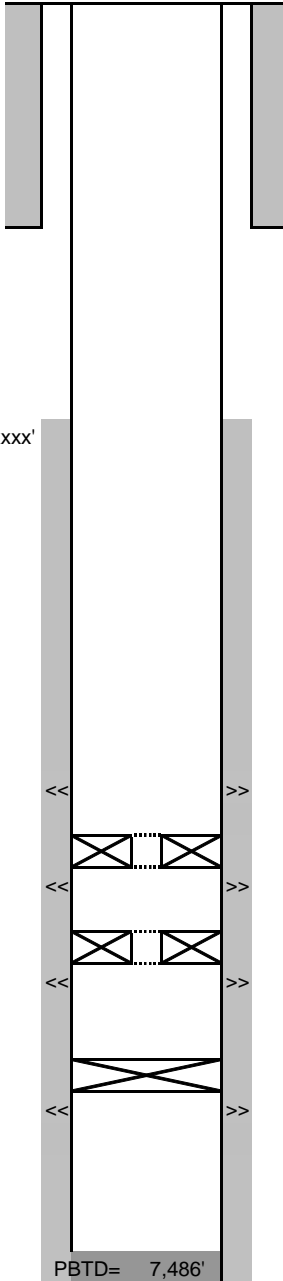
Updated  
12/15/2014  
SMS



G.L.= 4985  
K.B.= 5001  
16

8-5/8" 24# set at 557'  
Cmt'd w/ 230 sx to Surf.

CBL TOC: xxxx'



PBT D= 7,486'  
TD MD= 7,552'  
TD VD= 7,552'

### **NIO A: 7097'-7105' 7112-7120', 4spf, 64 holes, 11-26-14**

Frac'd 11/26/14, 4,181 bbls, 107,000 lbs 40/70, FR water  
CIFP @ 7170

### **NIO B: 7222'-7242' & 7232-7241', 4spf, 112 shots, 11-25-14**

Frac'd 11/25/14, 6,375 bbls, 178,080 lbs 40/70, FR water  
CIFP @ 7300

### **NIO C: 7320'-7331', 4spf, 44 shots, 11-24-14**

Frac'd 11/25/14, 4,473 bbls, 98,900 lbs 40/70, FR water

### **10K CIBP @ 7390 on 11/23/14**

Codell:7406'- 7425', 4spf, 76 shots

Frac on 2/14/2013 with 256,977 gals of slickwater and 180,320 lbs of 30/50.

4 1/2", 11.6# LTC 7540' (7-7/8" O.H.)

Cmt'd w/ 860 sx