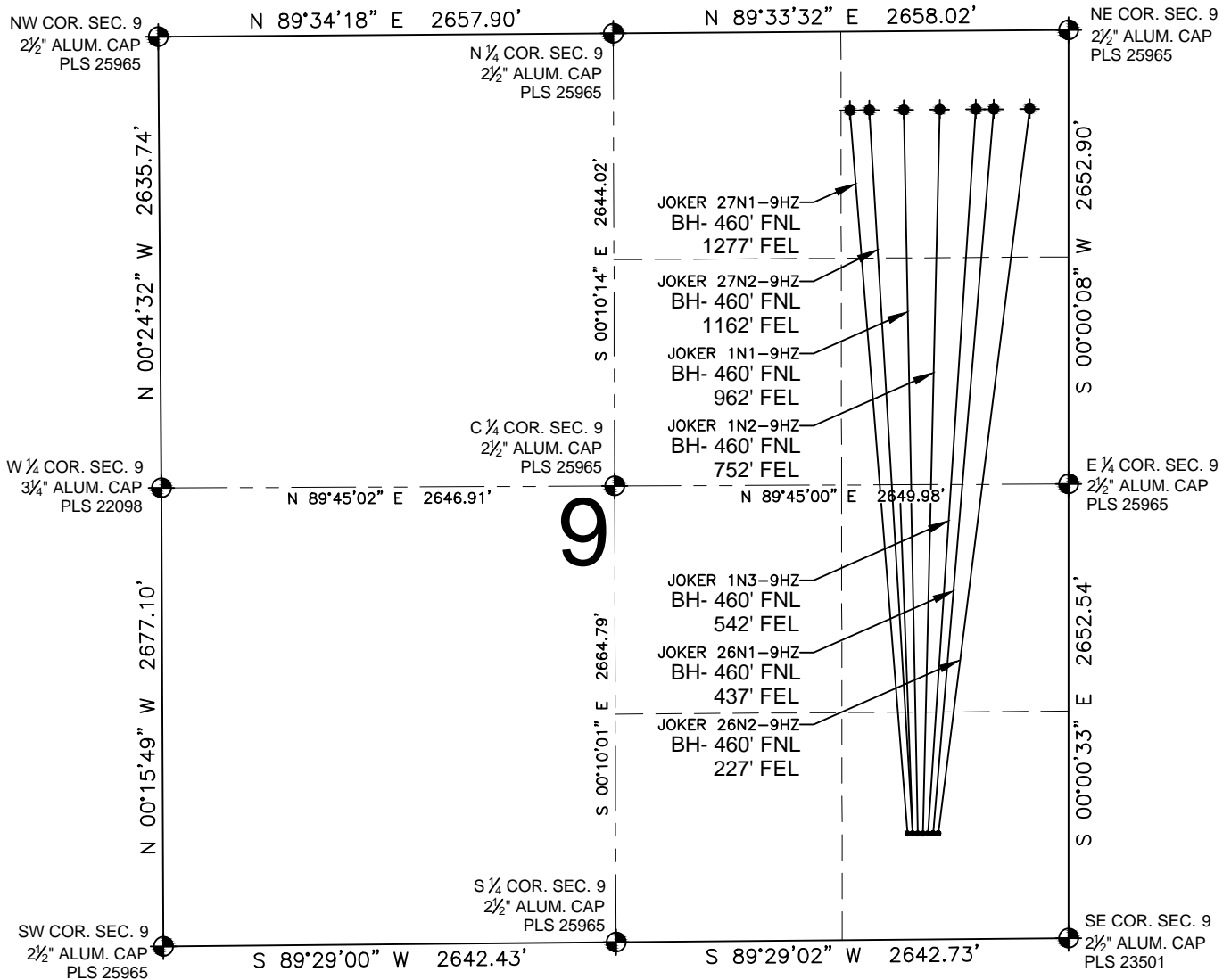


# JOKER 1N2-9HZ MULTI-WELL PLAN

SECTION 9, TOWNSHIP 1 NORTH, RANGE 65 WEST, 6TH P.M.



## NOTES:

JOKER 27N1-9HZ TO BE AT 620' FSL, 940' FEL.  
 BOTTOM HOLE AT 460' FNL & 1277' FEL,  
 JOKER 27N2-9HZ TO BE AT 620' FSL, 910' FEL.  
 BOTTOM HOLE AT 460' FNL & 1162' FEL,  
 JOKER 1N1-9HZ TO BE AT 620' FSL, 880' FEL.  
 BOTTOM HOLE AT 460' FNL & 962' FEL,  
 JOKER 1N2-9HZ TO BE AT 620' FSL, 850' FEL.  
 BOTTOM HOLE AT 460' FNL & 752' FEL,  
 JOKER 1N3-9HZ TO BE AT 620' FSL, 820' FEL.  
 BOTTOM HOLE AT 460' FNL & 542' FEL,  
 JOKER 26N1-9HZ TO BE AT 620' FSL, 790' FEL.  
 BOTTOM HOLE AT 460' FNL & 437' FEL,  
 JOKER 26N2-9HZ TO BE AT 620' FSL, 760' FEL.  
 BOTTOM HOLE AT 460' FNL & 227' FEL

## LEGEND

- = EXISTING MONUMENT
- = PROPOSED WELL
- ◆ = BOTTOM HOLE
- ◆ = EXISTING WELL
- BH = BOTTOM HOLE

PREPARED BY:



KERR-MCGEE OIL & GAS ONSHORE LP

FIELD DATE:

09-19-14

DRAWING DATE:

12-19-14

SURFACE LOCATION:

SE 1/4, SE 1/4, SEC. 9, T1N, R65W, 6TH P.M.  
 WELD COUNTY, COLORADO

